

Dare to be first.



GSS Senator Retreat

Presented by the
GSS Executive Committee
August 30, 2010

Overview

- ▣ Mission of the Senate
- ▣ Rights of the Senator
- ▣ Official Policies
- ▣ Responsibilities of the Senator
- ▣ Responsibilities of Committee Chairs
- ▣ Communication
- ▣ Monthly Meetings
- ▣ Committee Functioning
- ▣ Internal Committees

GSS Mission Statement

The Graduate Student Senate seeks to create a forum for graduate student advocacy while acting as a conduit between students, faculty and administration at the University of Delaware. The Senate supports campus-wide activities facilitating graduate student professionalism and collegiality.

How do members benefit from the GSS?

- ▣ Interact with other UD grad students
- ▣ Service and professional development opportunities
- ▣ Forum for active discussion
- ▣ Connect with relevant UD staff/personnel for info
- ▣ Support structure to advocate for change

You Have the Right To...

- ▣ Use the GSS a forum for advocacy
- ▣ Be made aware of different avenues for advocacy
- ▣ Be shown respect and consideration while participating in GSS activities
- ▣ Have privacy and confidentiality maintained when speaking and serving on behalf of the GSS

The Different “Hats” of a Senator

- ▣ A Senator may speak on behalf of:
 - Her or his Academic Plan
 - Herself or himself
 - Anonymously

- ▣ A Senator may vote on behalf of:
 - Her or his Academic Plan when the vote is about a statement or position of the GSS
 - Herself or himself when the vote is about the function or organization of the GSS

Official Policies

- ▣ GSS Constitution
- ▣ Official Committee Report Policy
- ▣ Process for Amending Constitution and By-Laws
- ▣ Active Standing Requirements

A Senator has the Responsibility Of...

Attendance

- Monthly meetings
- Committee meetings
- Provost Luncheon (Fall) /President's Reception (Spring)
- By proxy

Representation

- Represent, vote and advocate on behalf of your Academic Plan

Service

- On one internal or select external committee

Information Dissemination

- Pass information from the GSS to you Academic Plan, and from your Academic Plan to the GSS
- Similarly, pass info between the GSS and External Committees

Information Dissemination Policy

- ▣ Copy ud.graduatestudentsenate@gmail.com on emails to Academic Plan
- ▣ Mailman lists for each Academic Plan
- ▣ Inform Exec if you choose not to disseminate information electronically

A Committee Chairperson has the Responsibility Of...

Organizing Committee Meetings

- ▣ Meet once a month during the Fall and Spring
- ▣ Doodle.com or MeetingWizard.com
- ▣ No more than two meetings per semester may be virtual meetings (carried out by email)

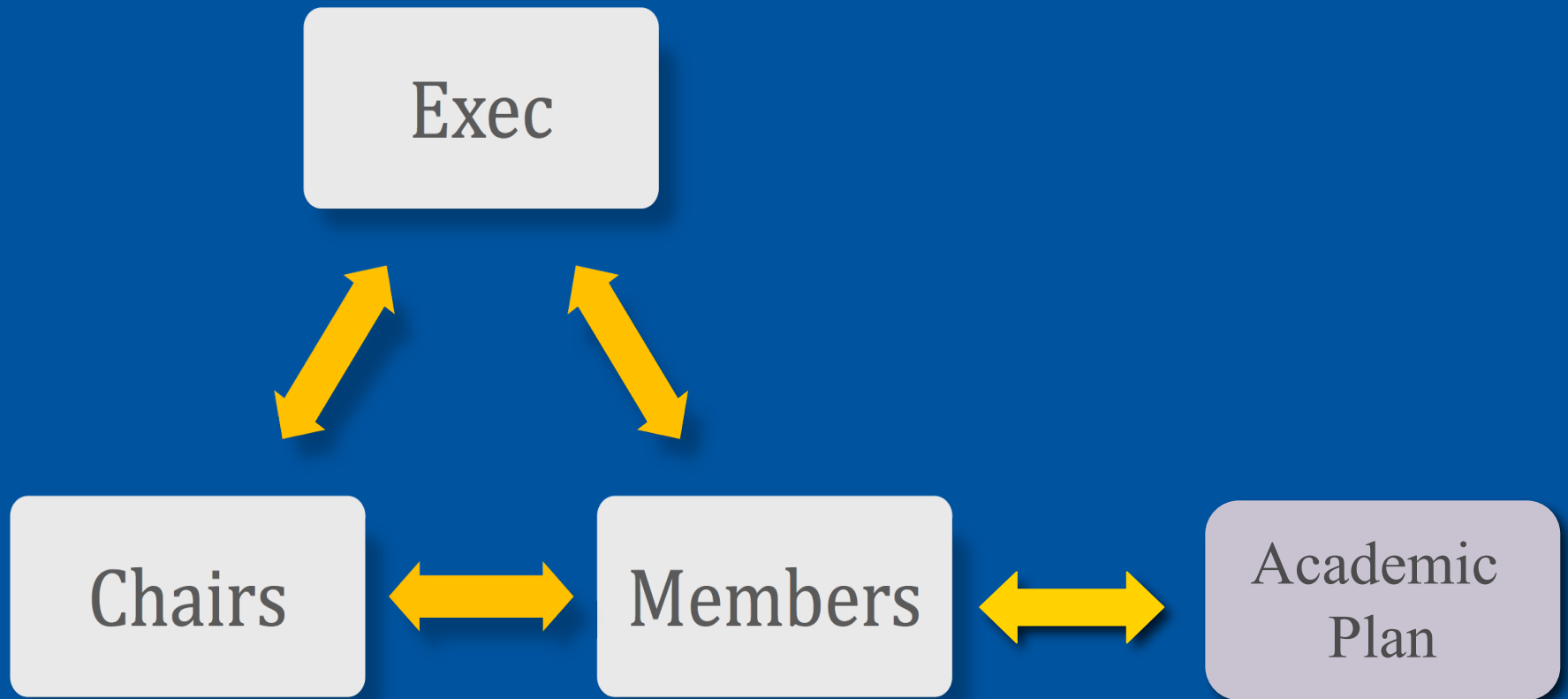
Maintain Records and Communicate with Exec

- ▣ Within two weeks after each meeting, email attendance and minutes to Membership Officer and Secretary
- ▣ Regularly communicate with the President and Senate
- ▣ End of session evaluation of committee members

Internal Committee Chairperson

- ▣ Chosen at the first committee meeting (today) by election
- ▣ Must be a Senator in Active Standing
- ▣ Two Senators may be Co-Chairpersons

Communications



Communications from the GSS

▣ Action Items

- Distributed after GSS meetings to Senators/Members to disseminate info from the meeting in a timely manner
- Tailor to your Academic Plan

▣ GSS Update

- Distributed on Mondays, every other week
- Contains announcements/reminders
- Deadline to submit an announcement is Sunday at noon

▣ What's Happening

- Voluntary
- By the Communications Committee on Mondays
- Variety of local, fun, and usually free activities in and around Newark and the UD Community
- Deadline to submit is Sunday at noon

Electronic Media

- ▣ [GSS Website](#)
 - Facebook, GSS Blog and Calendar links on the website
- ▣ [Facebook Group](#)
- ▣ [GSS Blog](#)
- ▣ [GSS Google Calendar](#)
 - Integrated into website and public
 - Subscribe!

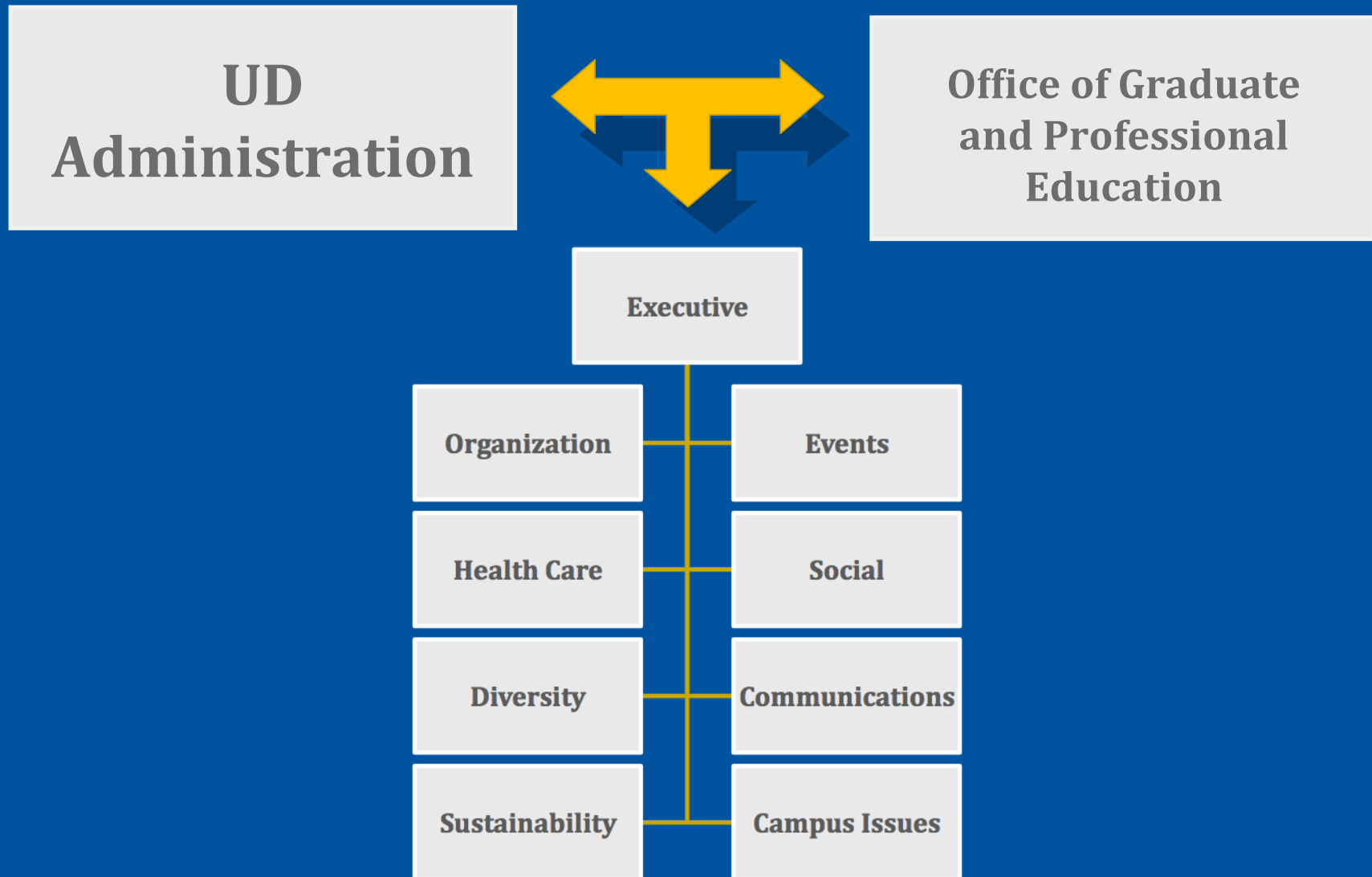
GSS Monthly Meetings

- ▣ Attendance
- ▣ Special Guests
- ▣ Committee Reports
 - Please keep to five minutes maximum
- ▣ General Discussion
 - Approach Exec with issues and questions beforehand so we may help you with the presentation of the issue before the Senate

External Committee Involvement

- ▣ Coordinate with Membership Officer, Kirsten Hirneisen (khirneis@udel.edu) or Mary Martin (marym@udel.edu)
- ▣ Attend meetings
- ▣ Give updates at monthly GSS meetings
- ▣ Act as a bridge between External Committees and the GSS

Internal Committee Functioning



Internal Committees of the GSS

- ▣ Executive
- ▣ Organization
- ▣ Communications
- ▣ Campus Issues
- ▣ Sustainability
- ▣ Social
- ▣ Diversity
- ▣ Health Care
- ▣ Events