

UNIVERSITY OF
DELAWARE

ENGLISH LANGUAGE INSTITUTE

ONLINE PROGRAMS

2020-2021







IN THIS BROCHURE

About the University of Delaware	4
ELI Online introduction	6
Personal and professional development programs	6
Courses for Graduate Students	8
Intensive English Program	9
Academic Transitions	11
Graduate Conditional Admissions Program	14
Pre-MBA	16
About the English Language Institute	17

Most online programs include live, online classes via Zoom. You will need access to a laptop capable of running Zoom and a stable internet connection.

If you have any questions, please contact us at ud-eli@udel.edu.

ABOUT THE UNIVERSITY OF DELAWARE

Established in 1743, the University of Delaware (UD) is a nationally and internationally recognized institution of higher learning on the East Coast of the U.S.

UD has a long tradition of excellence in teaching, research and innovation. Throughout our history, UD graduates have made important contributions in the U.S. and around the world. Some of our alumni include U.S. President Joe Biden, signers of the U.S. Declaration of Independence, state governors and leaders of major companies.

Almost 24,000 undergraduate and graduate students enjoy UD's small class sizes – approximately 60% of classes have fewer than 30 students – expert faculty, dedicated advisors, world-class facilities and excellent support services.

As a Blue Hen, we'll help you make your big ideas come to life. Apply today to be a part of our community of talented, driven and passionate Blue Hens.



#9

Colleges with the Best 4-Year
Graduation Rate
Chronicle of Higher Education
(4-year public institutions)

#40

U.S. News and World Report's
Top Public Schools, 2021

#97

U.S. News and World Report's
National Universities, 2021

LOCATION

One important reason that students choose UD is its location in Newark, Delaware. Students appreciate how easily they can access some of the most important historical, economic and cultural centers in the U.S.:

- New York City (2 hours)
- Washington, D.C. (2 hours)
- Baltimore (1 hour)
- Philadelphia (45 minutes)

Our city, Newark, Delaware, has a population of approximately 33,000 people and is known for its charming and friendly atmosphere. Students spend a great deal of time on our award-winning Main Street, enjoying the many cafes and international restaurants, and - of course - tax-free shopping!





Success After Graduation

BACHELOR'S DEGREE GRADUATES (2019)

\$53,532

Average Salary

95%

Employed or pursuing further education

MASTER'S DEGREE GRADUATES (2019)

\$75,455

Average Salary

93%

Employed or pursuing further education

DOCTORAL DEGREE GRADUATES (2019)

\$90,825

Average Salary

98%

Employed or pursuing further education

International student support services

- Conditional admission to undergraduate and graduate programs, enabling students to benefit from academic, linguistic and cultural preparation at UD's English Language Institute
- An enhanced first-semester curriculum that provides additional academic, linguistic and cultural support to international students with a TOEFL score of 79-89.
- Cultural programming to help students adjust to life in Delaware
- Student organizations focused on activities and topics like dance, religion, culture, martial arts, music, etc.
- Career services and immigration advising to help students access internships and find jobs after graduating
- Academic advising to promote student success in the classroom
- Merit scholarships for qualified students who meet academic requirements each year

ELI ONLINE

What sets us apart?



Expert instruction

Courses are designed and taught by experienced faculty with master's and, in some cases, doctoral degrees. They have enriched the field of ESL through their research, publications and instructional innovation and have authored textbooks that break new ground in the field.



Access to faculty

All programs include meetings by Zoom with ELI faculty or advisors, and participants are supported throughout their courses by other methods, including email, chat, video calls, and discussion boards.



Engaging technology

ELI faculty are trained to use the latest educational technology, and our primary platforms are supported by UD and ELI technology specialists. Asynchronous learning is highly engaging, including interactive videos, collaborative brainstorming, annotated readings, and discussion boards.

PERSONAL AND PROFESSIONAL DEVELOPMENT PROGRAMS

Choose one of our personal and professional development programs to improve your English for specific purposes - business, public service, or the pursuit of graduate education in the U.S. These courses provide a way to practice your English in a supportive, fun setting!

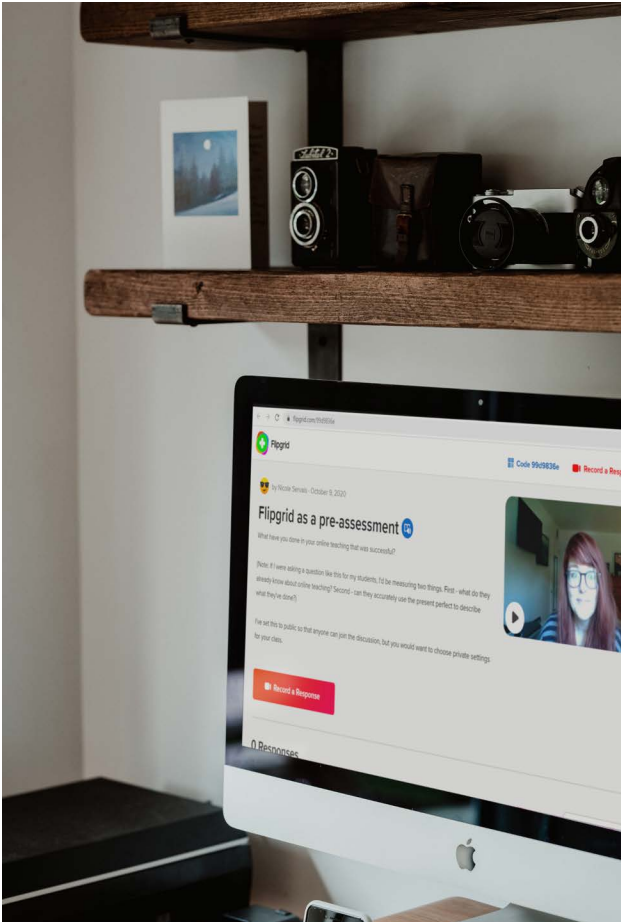
Conversation and Grammar

Improve your English grammar online in small groups.

This online course offers students the chance to improve their English by working with an instructor in a small group to learn and practice English grammar. Grammar topics will be selected by the instructor based on the needs and requests of the students. Lessons will typically consist of an explanation of a grammar topic with opportunity for questions. Students will then practice using the grammar to discuss a topic of interest.



www.udel.edu/eli/online



Delaware EFL Teacher Training

The English Language Institute's Delaware EFL Teacher Training (DEFT) program draws from a rich, 40-plus-year history of training teachers from around the world to use the latest techniques and methodologies in teaching English as a second or foreign language.

DEFT Online expands the reach of our program: until you can come to Delaware, we're ready to bring the University of Delaware to you!

Teaching is all about relationships, and when you take a DEFT course at the ELI, you will build professional relationships with faculty and colleagues that will last your entire career.

Groups: Groups of 12 or more teachers can customize courses from the menu of core courses, tutoring, IEP language courses, and other options. Contact Baerbel Schumacher at baerbel@udel.edu for details.

Individuals: Individuals can register for DEFT Online courses; see www.udel.edu/eli/apply/deftonline for upcoming course dates and costs. Tutoring is available for an additional fee.

Business Communication

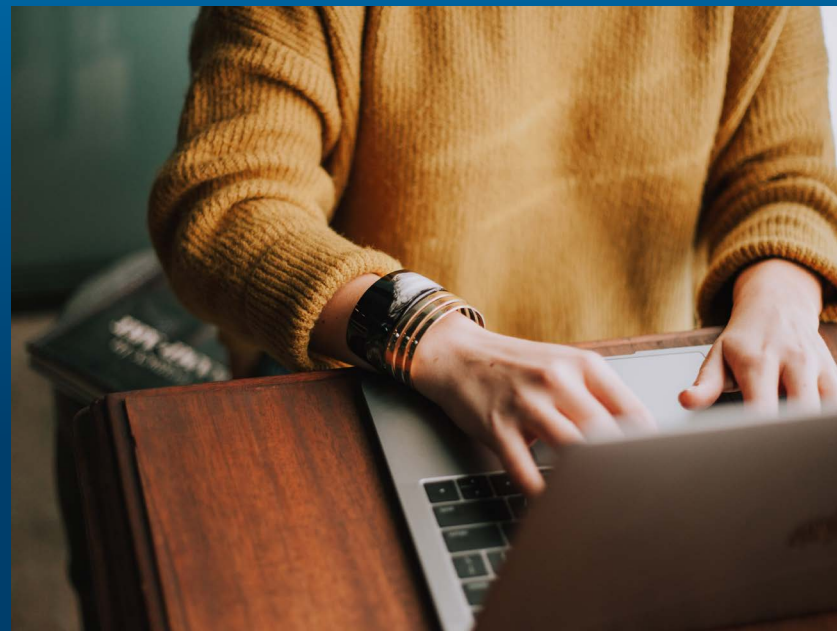
Analyze real business scenarios, build your language skills, and engage in real life communication activities.

Business Communication is an instructor-led online course delivered in real time.

The course helps business professionals practice the English for networking, negotiating, running meetings, and improve their discussion and presentation skills, listening proficiency, oral intelligibility, vocabulary, and grammar.

The instructor will work with you to identify specific areas for improvement and offer tools, activities, and individualized feedback.

Practice pronunciation through targeted oral exercises that develop the stress, intonation and rhythm of American English and as a result, improve your intelligibility.





COURSES FOR GRADUATE STUDENTS

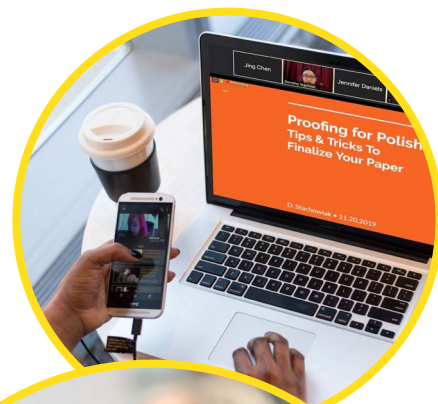
These courses, designed specifically for international graduate school applicants, help you through the application process for professional and academic programs at the master's and doctoral level.

- Blended courses with synchronous and asynchronous components combine the benefits of live instruction with self-paced learning to fit a busy schedule.
- Interaction with UD instructors as well as students from around the world, creates an intercultural, multilingual community of learners.

GRE/GMAT Preparation for International Students

Prepare to take the GRE or GMAT as an international student.

Take the fear out of the GRE and the GMAT! Our GRE/GMAT Prep course provides strategies for tackling the verbal and essay sections of the tests, with special emphasis on the challenges that international students face. You will participate in interactive sessions with your instructor; collaborate with classmates from around the world; and strengthen your English reading, vocabulary, and writing skills through assignments which will be customized based on your unique strengths and weaknesses. Weekly activities outside of face-to-face sessions can be completed at your own pace to accommodate your schedule.



Applying to Graduate School

Get the help you need to apply to graduate schools in the U.S.

This fully self-paced asynchronous course allows you to start any time. In addition to step-by-step modules that walk you through the graduate school selection and application process with a special focus on international students, participants will have three one-on-one conferences with ELI advisors. You can choose how to use your one-on-one time: ask for help with choosing schools, preparing materials, or writing your personal statement.



INTENSIVE ENGLISH PROGRAM

Thousands of students and professionals from around the world have studied in the Intensive English Program (IEP). Known for its innovative course offerings, IEP helps participants to develop their English for professional settings and improve their knowledge of U.S. culture.

Levels of instruction

With seven (7) levels of instruction, you will receive instruction that works best for your proficiency.

On your first day, you will take an online placement exam to help us determine your English level. You should complete one level per session.

Note: the Basic level may not be offered each session.

Areas of study

Beginner and Intermediate Levels

At the beginner and intermediate levels (Basic, 1, 2, 3), students study General English in their Listening/Speaking and Reading/Writing courses.

High Intermediate and Advanced Levels

At the high intermediate and advanced levels (4, 5, 6), students choose courses in one of the following four areas of study:

- General English
- English for Academic Purposes
- Business English
- English through American Culture

IEP Calendar

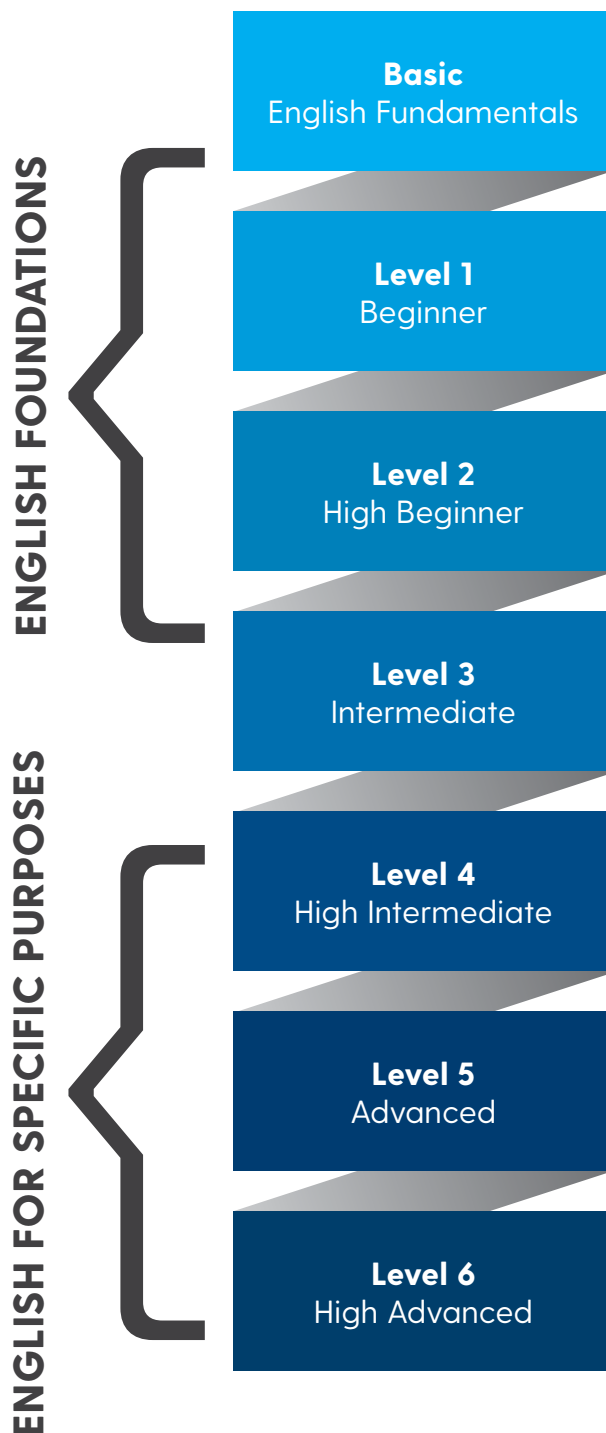
We offer six (6) sessions per year. Each session lasts approximately two (2) months.

The Academic Year 2020-2021 IEP schedule is:

March 1 - April 23, 2021
May 3 - June 25, 2021
July 6 - August 20, 2021

The Academic Year 2021-2022 IEP schedule is:

August 20 - October 22, 2021
October 25 - December 17, 2021



Estimated Cost of Attendance

(per session, 2 months)

Tuition	US \$3,302
Books*	250
Online Total*	US \$3,552

A \$300 tuition deposit is required. The deposit will be subtracted from your first tuition bill. There is an express mail fee of US \$35 for mailed I-20s.

*Prices are in U.S. dollars and are valid until August 20, 2021 and are subject to change without notice. Prices listed for books are estimated.

Coursework

ELI students attend two (2) courses each session:

- **Listening/Speaking:** Develop oral grammar, pronunciation, intonation, accent and listening comprehension skills.
- **Reading/Writing:** Develop reading, writing, vocabulary and research skills.

Each class meets live on Zoom each day, Monday- Friday, for a total of 20 hours per week. In some courses, interactive asynchronous individual and group activities replace one or two days of synchronous (Zoom) classes. Students also benefit from private tutoring, computer-assisted instruction and our online listening laboratory.



SAMPLE DAILY SCHEDULE FOR THE INTENSIVE ENGLISH PROGRAM

	MONDAY	TUESDAY	WEDNESDAY	THURSDAY	FRIDAY
8:15-9:55 a.m.	Listening/ Speaking	Listening/ Speaking	Listening/ Speaking	Listening/ Speaking	Listening/ Speaking
10:25 a.m.-12:10 p.m.	Reading/Writing	Reading/Writing	Reading/Writing	Reading/Writing	Reading/Writing

This is just an example of a common schedule. Afternoon classes are an option for some students and there are many options for tutoring hours.



ACADEMIC TRANSITIONS

Conditional admissions for undergraduate students

Academic Transitions (AT) is the University of Delaware's pathway program for conditionally-admitted undergraduate students. If you have an excellent academic background, you can be conditionally accepted to a UD undergraduate program even if you need to improve your English before starting full-time university studies! Students can study all majors via AT.

Features of AT

Courses related to the student's major

AT students follow a special track of study with courses and credits that count toward their bachelor's degree. You can **earn up to 28 credits** while studying at the ELI—almost the equivalent of the first year of university—which helps you **finish in 4 years!**

Classes for non-native English speakers

University courses in AT have been designed for students who do not speak English as a first language. This helps students to better understand the course content.

Small online classes

Students can begin their AT experience taking **small, online classes**. Classes are mostly live, with students and instructors interacting “face-to-face,” virtually. Breakout rooms provide space for small group work.

Academic skill development

AT students develop study skills, build academic vocabulary, and learn about the expectations of American professors. Most AT students (90%) matriculate after AT2, and **earn a higher GPA** than international students who did not complete AT.

Resources for student success

Whether studying online or on campus, AT students have many resources to help them be successful: University student and faculty mentors, academic advisors, private tutoring and more.

Excellent value

AT students pay a price that is similar to what other international students pay for one year of full-time university study; however, AT students receive added value in the support that was specially designed for non-native English speakers.

Convenient start dates

The AT calendar uses 4-month semesters. There are 3 start dates for AT each year.



www.udel.edu/eli/at



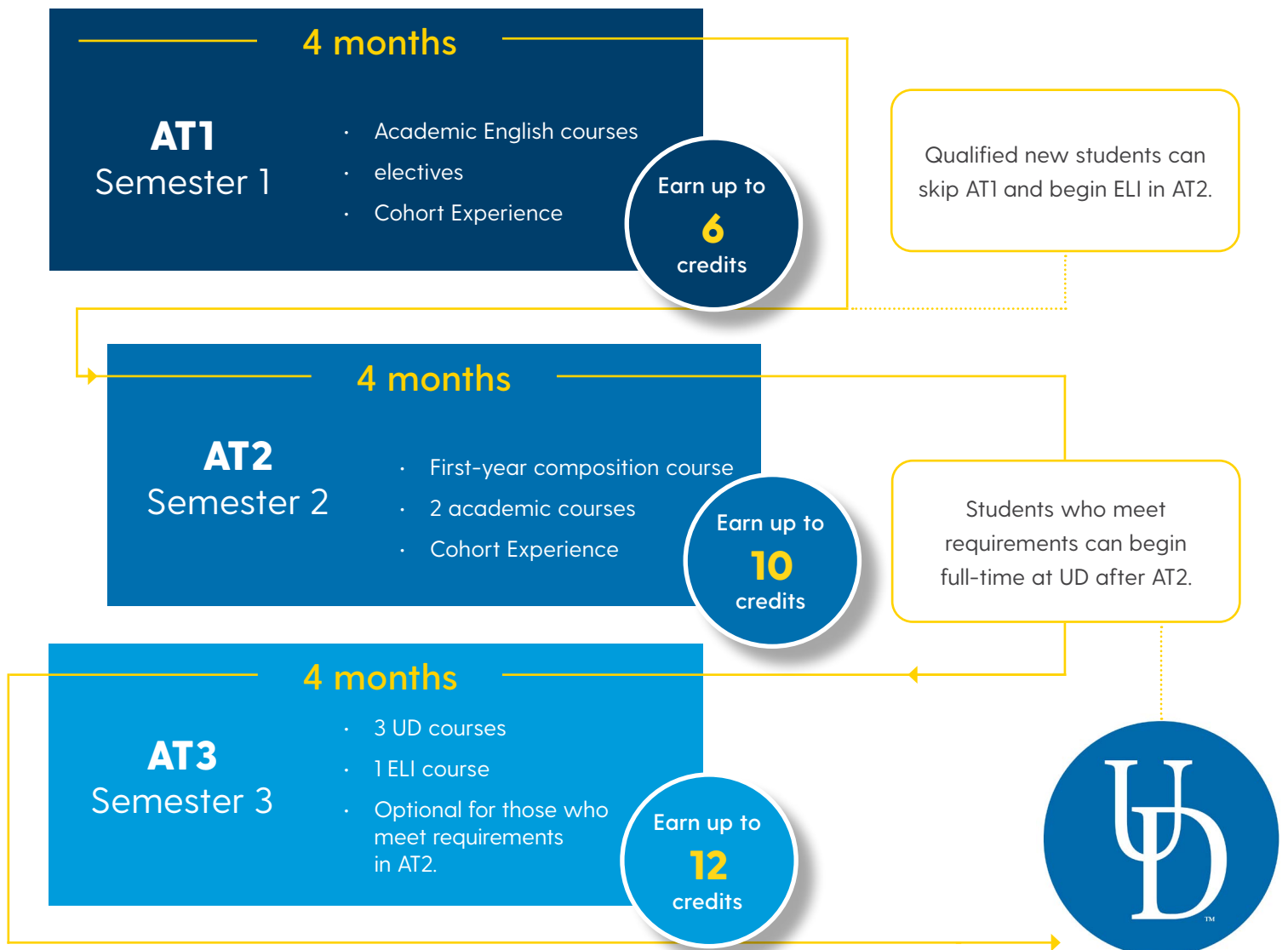
How does AT work?

There are two plans that determine how many university credits you can earn in AT, and how much time you will spend in the program:

- Two-semester AT plan: earn up to 16 credits in 8 months.
- International First Year option: earn up to 28 credits in 12 months.

All students are automatically enrolled in the Two-semester AT plan, with the expectation that they will complete the program in 8 months.

If you do not meet the program requirements at the end of AT2, you will continue studying in AT3 for an additional 4 months in the International First Year option.



AT Calendar

There are 3 semesters of AT offered each year, and you can start your studies at the ELI at the beginning of any of these terms.

Each semester lasts approximately 4 months.

Academic Year 2020-2021

May 4 - August 20, 2021

Academic Year 2021-2022

August 31 - December 17, 2021

AT Prices

AT1 + AT2

(per semester, 4 months)

Tuition	US \$17,080
Books	400
Online Total*	US \$17,480

AT3

(per semester, 4 months)

Tuition	US \$8,540
Books	400
Online Total*	US \$8,940

A \$300 tuition deposit is required. The deposit will be subtracted from your first tuition bill. There is an express mail fee of US \$35 for mailed I-20s.

Prices are in U.S. dollars and are valid until August 20, 2021 and are subject to change without notice. Prices for academic year 2021-2022 will be available this summer.

*Prices listed for books are estimated.

More Information

For more information about the AT program, please refer to our AT brochure, which includes more details and information about:

- Admissions requirements and instructions
- The level placement process
- Pre-AT for lower level students
- and more!

See the AT brochure at:

www.udel.edu/eli/brochures/at.pdf



CAPadmissions@udel.edu

GRADUATE CONDITIONAL ADMISSIONS

Through the Graduate Conditional Admissions Program (Grad CAP), excellent students can be accepted to University of Delaware graduate programs and our partner colleges and universities. **No TOEFL score is required!**

Grad CAP students enroll full-time in Academic English courses at the ELI. Once you complete Grad CAP requirements, you begin your regular master's or Ph.D. university coursework—without ever taking a TOEFL or IELTS exam!

Program Features

- 31 hours of online instruction per week
- Academic English, Listening/Speaking and Reading/Writing courses
- 7 levels of instruction
- Academic advisors
- University student mentors
- Private tutoring
- Special courses for students who plan to pursue a graduate degree (master's, doctorate)
- Listening laboratory
- Cultural program



Benefits of Grad CAP

Through Grad CAP, students will:

- Prepare for success in an American university
- Develop academic teamwork and leadership skills
- Improve their academic English skills
- Adjust to U.S. academic culture before beginning full-time graduate university courses

Partner Schools

For more information about our partner colleges and universities, visit www.udel.edu/eli/gradcap.

Grad CAP Price

Estimated costs per 2-month session

Tuition	US \$4,667
Books**	250
Online Total*	US \$4,917

A \$300 tuition deposit is required. The deposit will be subtracted from your first tuition bill. There is an express mail fee of US \$35 for mailed I-20s.

**Prices are in U.S. dollars and are valid until August 20, 2021 and are subject to change without notice. Prices for academic year 2021-2022 will be available this summer. Prices listed for books are estimated.

Grad CAP Calendar

We offer six (6) sessions per year. Each session lasts approximately two (2) months. Grad CAP follows the same calendar as the Intensive English Program. See page 9.



Program Duration

The length of time needed to complete Grad CAP requirements is different for each student. It depends on a few factors, including:

- Your English skills when you begin the program (see table); and
- Your willingness to work hard to improve your English skills – practicing all day, every day.

Starting Level	Program Duration*
6 (High advanced)	2-4 months
5 (Advanced)	6-8 months
4 (High intermediate)	8-10 months
3 (Intermediate)	10-12 months
2 (High beginner)	12-14 months
1 (Beginner)	14-16 months
Basic (English fundamentals)	18-20 months

*Students are not guaranteed to meet the program requirements in the time periods listed above; some require more time to develop their English skills.

Coursework

ALL STUDENTS

Level 4
 High Intermediate
 Listening/Speaking
 Reading/Writing



Level 5
 Advanced
 Listening/Speaking for Graduate Programs
 Reading/Writing for Graduate Programs



ALL OTHER GRADUATE PROGRAMS

Level 6
 High Advanced
 Listening/Speaking for Graduate Programs
 Reading/Writing for Graduate Programs

BUSINESS MAJORS

Level 6
 Advanced Business Case Studies
 (Listening/Speaking)
 Reading/Writing for Graduate Programs



PRE-MBA

Since 1988, the Pre-MBA program has prepared international students for admission and successful study in competitive American MBA programs.

During this 4-month program, students meet the following learning objectives:

- Training in case study analysis
- Development of effective oral presentation and intercultural communication skills
- Exposure to economics, management and finance vocabulary and concepts
- Workshops and lectures by entrepreneurs and MBA faculty

By developing these skills, Pre-MBA students are more prepared to succeed in an MBA program!

Courses

- Advanced Business Case Studies
- Entrepreneurship and the Business Plan
- Reading and Writing for Graduate Programs
- GMAT/GRE Preparation

Price

Estimated costs per 4 months

Tuition	US \$6,364
Books*	500
Online Total*	US \$6,864

A \$300 tuition deposit is required. The deposit will be subtracted from your first tuition bill. There is an express mail fee of US \$35 for mailed I-20s.

*Prices are in U.S. dollars and are valid until August 20, 2021 and are subject to change without notice. Prices listed for books are estimated.

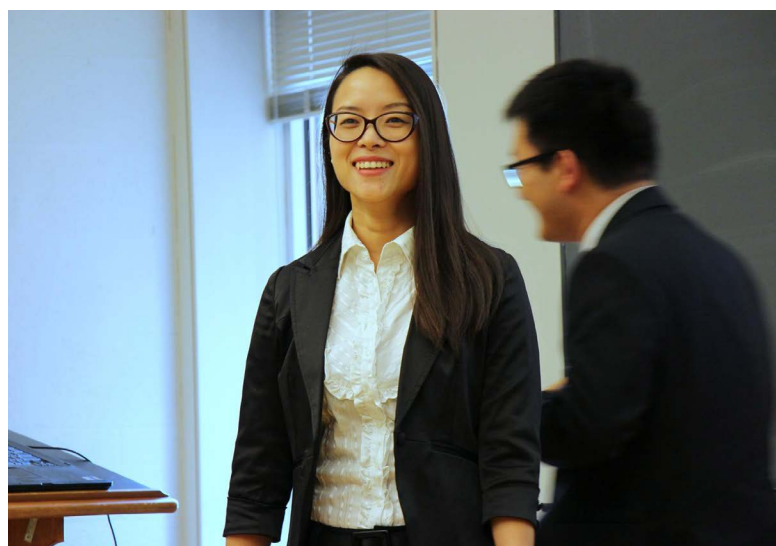
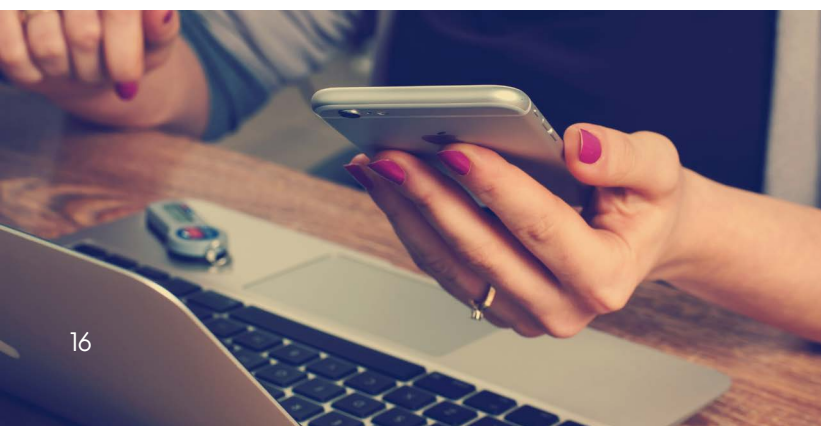
Calendar

The Pre-MBA program follows the same calendar as the Intensive English Program. See page 13.

Admissions Requirements

The Pre-MBA is a “high-advanced level” (Level 6) program in the Intensive English Program (IEP) of the English Language Institute. You must take our placement test when you arrive in Delaware. You must place in at least Level 6 to show that you are prepared for the Pre-MBA program.

www.udel.edu/eli/premba



ABOUT THE ENGLISH LANGUAGE INSTITUTE

Founded in 1979, the University of Delaware English Language Institute (ELI) is a leader in the field of English as a Second Language (ESL) and is considered one of the top ESL programs in the United States. As an academic unit of the University of Delaware College of Arts and Sciences, we specialize in providing high-quality Academic English training and academic preparation for students who wish to attend a U.S. university.

The ELI is accredited by the Commission on English Language Program Accreditation (CEA) and is a member of these professional associations:

The Consortium of University and College Intensive English Programs (UCIEP)

EnglishUSA

NAFSA: The Association of International Educators

Teachers of English to Speakers of Other Languages (TESOL)

ELI Student Life and Services

Virtual Tutoring Center

ELI tutors can help with anything you would like to improve: assistance with class assignments, work on individual problems, questions about American culture, or conversation skills practice.

Virtual Academic Success Center

AT advisors in the Virtual Academic Success Center (VASC) can help with: class changes and grades; ELI policy and procedure; Academic Transitions and UD classes; graduation preparation.

Peer Mentors

Peer Mentors help students with learning beyond the classroom environment, leading students through a series of challenging academic, social, and service activities that increasingly immerse the students into all dimensions of university life.

Cohort

Through the Cohort program, students develop important personal, social, and academic skills that are necessary for success at the university level.

Book Club

Join Book Club each session, select a book and read together to improve your vocabulary and fluency!

Writing Table

Drop in to the online Tutoring Center for help with your writing.





JOIN THE FUN!

Learn more about our student life at
www.udel.edu/eli/studentlife



UNIVERSITY OF DELAWARE
**ENGLISH LANGUAGE
INSTITUTE**

189 West Main Street | Newark, Delaware 19716 USA

Telephone: +1-302-831-2674 | Fax: +1-302-831-6765

Email: ud-eli@udel.edu

 @UDelELI  @udel_eli  @UDelawareELI  @ud-eli  @UniofDelaware

www.udel.edu/eli