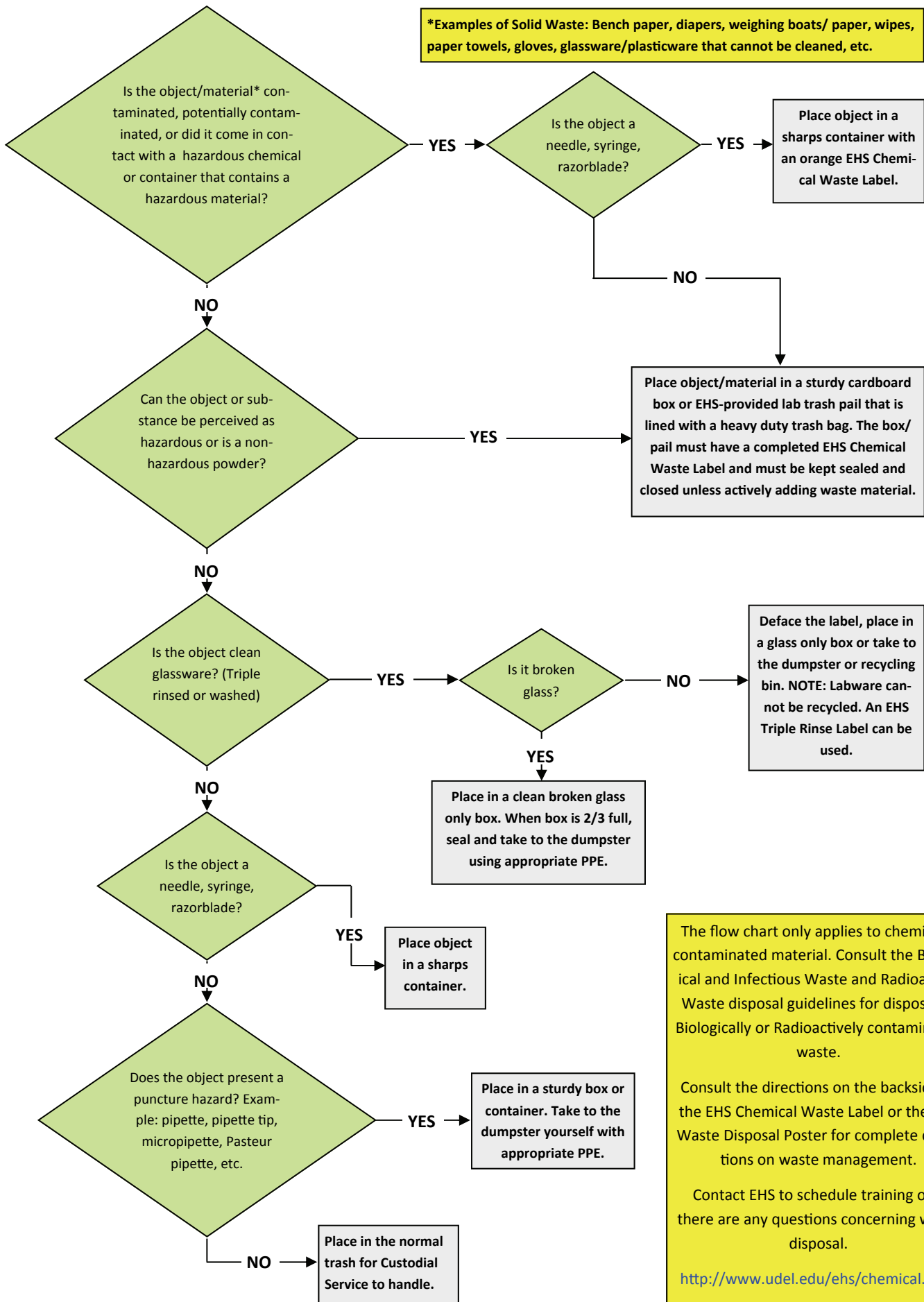


***Examples of Solid Waste: Bench paper, diapers, weighing boats/ paper, wipes, paper towels, gloves, glassware/plasticware that cannot be cleaned, etc.**



The flow chart only applies to chemically contaminated material. Consult the Biological and Infectious Waste and Radioactive Waste disposal guidelines for disposal of Biologically or Radioactively contaminated waste.

Consult the directions on the backside of the EHS Chemical Waste Label or the EHS Waste Disposal Poster for complete directions on waste management.

Contact EHS to schedule training or if there are any questions concerning waste disposal.

<http://www.udel.edu/ehs/chemical.html>