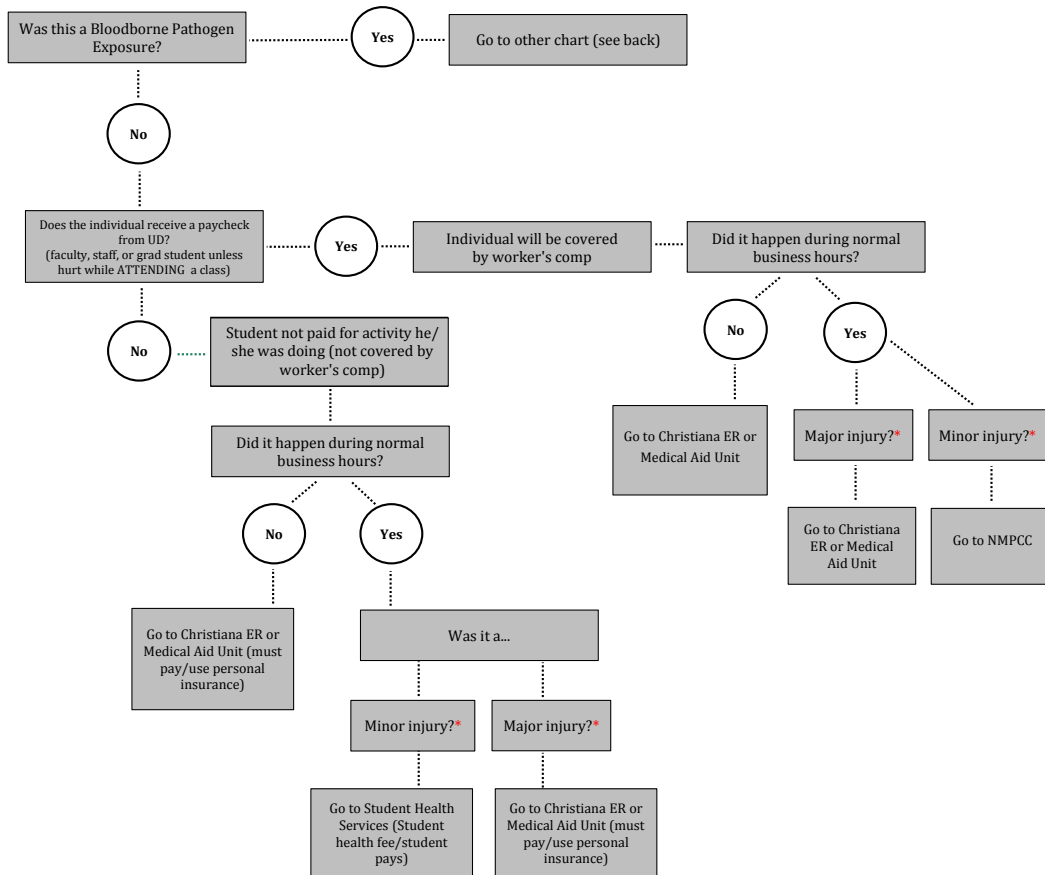


WHERE TO GO FOR TREATMENT



Notes:

* Major injury: hazardous chemical exposure, significant burn, cut requiring stitches

* Minor injury: minor cuts or burns, sprains

During the day call EHS for lab accidents/injuries 302-831-8475.

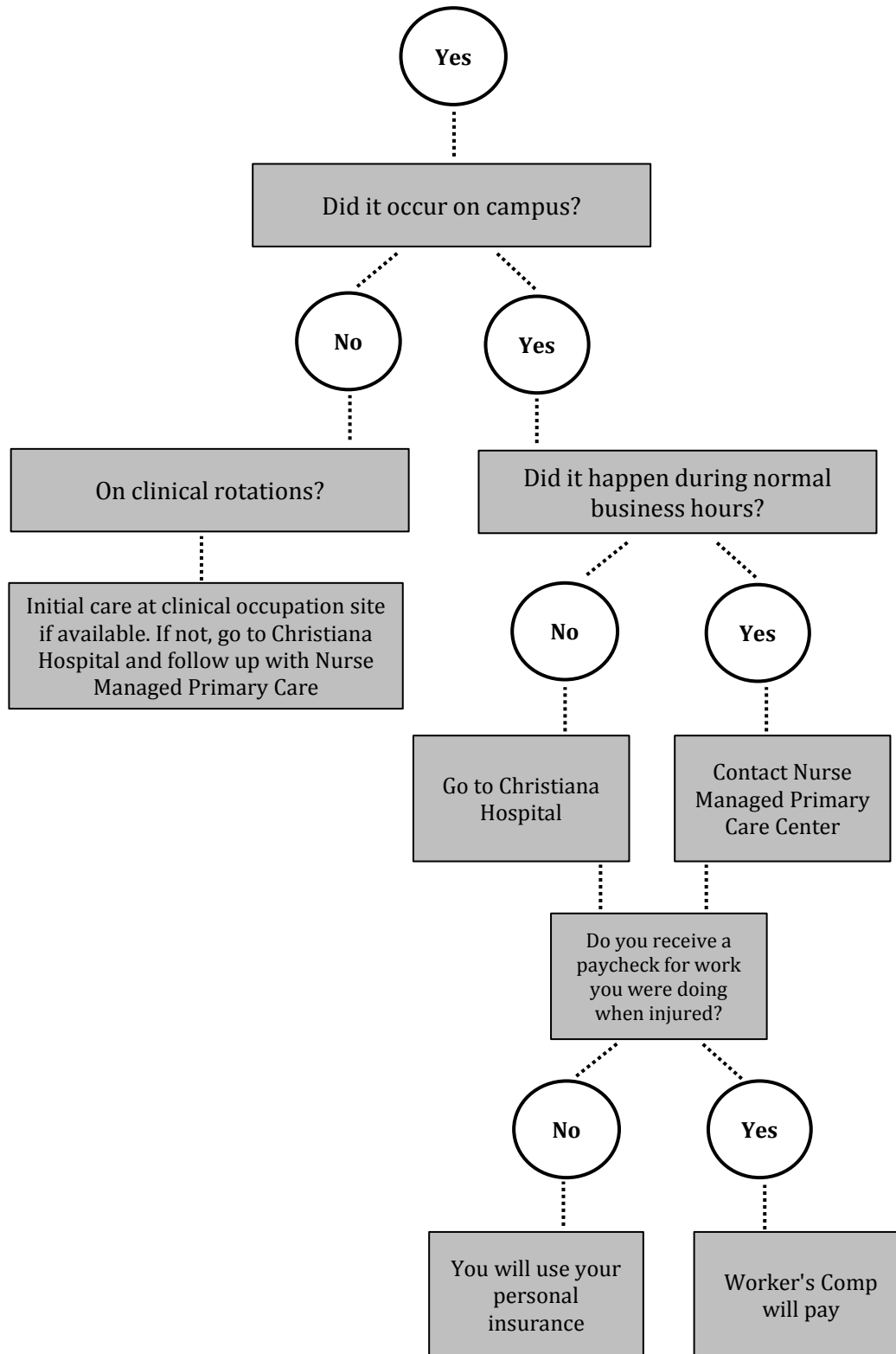
Call Nurse Managed Primary Care Center 302-831-3195 before sending patient there to let them know what is coming or schedule an appointment for non-emergency care.

After hours, contact EHS by calling UDDP at 302-831-2222, they can contact the Nurse Managed Primary Care Center on call staff at 302-831-3195, who can then notify Christiana Hospital that a patient from UD is coming and handle the follow up care after the initial emergency room visit.

Make sure appropriate First Report of Injury or Student/Visitor Report of Injury is completed and submitted within 24 hours, as well as Injury/Illness Loss Investigation Report is completed and submitted within one week.

Any necessary follow up care for worker's comp injuries can be performed through the Nurse Managed Primary Care Center.

WAS THIS A BLOODBORNE PATHOGEN EXPOSURE?



All BBP exposure should contact the Nurse Managed Primary Care Center for follow up care.