

Photoshop 5.5 & 6.0 Tips & Tricks

About This Collage

In this exercise you will create an image map in Photoshop and then open the file in ImageReady to set the mapping areas. Image maps are web images with designated areas called hot spots. These hot spots are actually links to other web pages. Image maps can be designed as a whole page or smaller like a navigation bar for a site.

1. Open or Create A Map File

1. In Photoshop, create an image made up of multiple images.

These images will become mapped areas, known as hot spots, in the final image map.

2. Use the "Jump To" Icon to open the file in ImageReady.

ImageReady Opens.



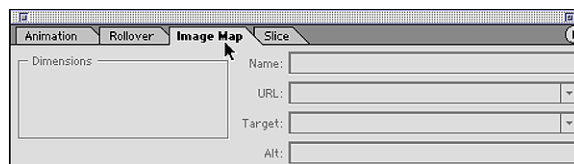
2. Show The Image Map Control Window

1. Open the Image map Control Window If it is not visible.

In the Window Menu, choose "Show Image Map."

The control window will appear.

2. Select the Image Map Tab .

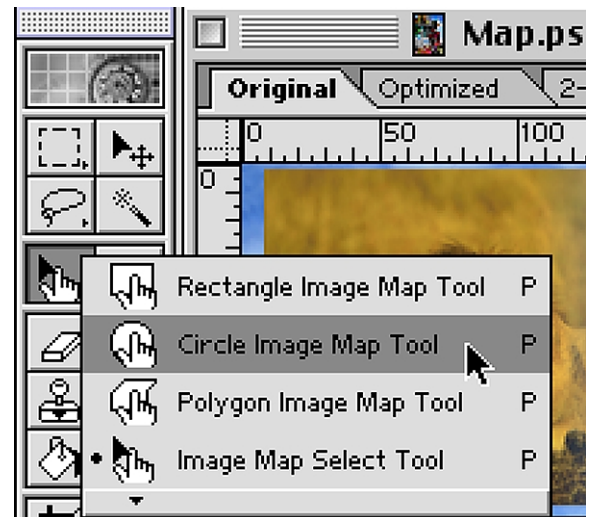


Photoshop 5.5 & 6.0 Tips & Tricks

3. Image Map Mapping Tools

In the Tool Bar choose one of the Area Mapping Tools:

- Rectangle for square or rectangular shapes
- Circle for round or oval shapes
- Polygon for irregular shapes



4. Select Area To Be Mapped

Working on the canvas:

1. Select an area to mapped with the appropriate tool.

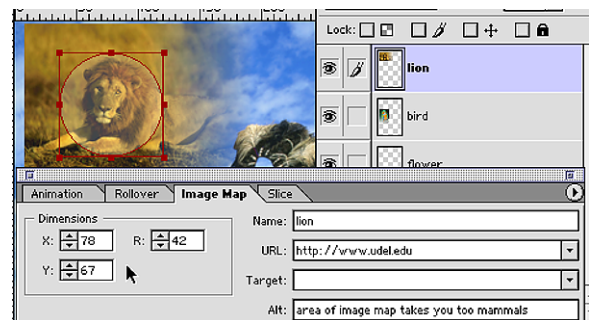
Working in the Image Map control window:

1. In the URL box
type the complete URL associated with that area of the map.
2. In the "Alt" text box
type what you would want a text reader to say or what should appear as the page and image are downloading

Note: Target is used for opening the linked page in another browser window or frame.

Note: You can precisely size and position your mapped area by using the height and width and X & Y coordinate boxes in the Image Map control window.

Continue mapping the image in this way, using the appropriate tools for each area; then save the file.



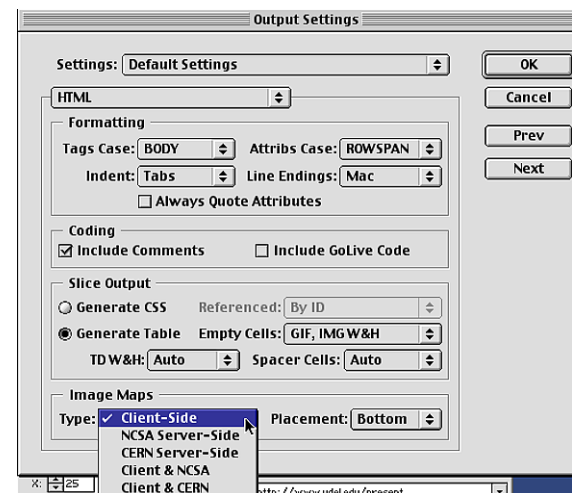
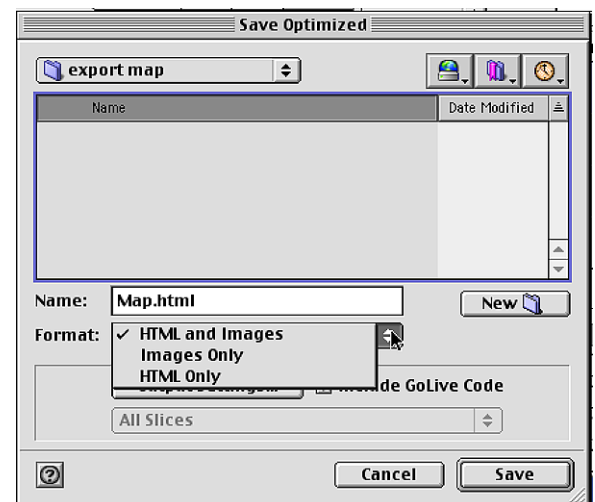
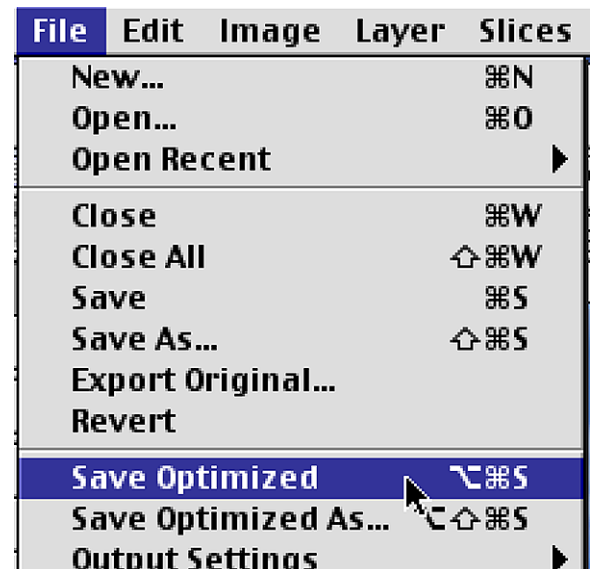
Photoshop 5.5 & 6.0 Tips & Tricks

5. Save and Create The Map With HTML File

1. In the File Menu
Choose "Save Optimized"
The Save Dialog Box Appears
2. Name the File and click on the "Output Setting" button.
Check "Include GoLive code"
if you are using GoLive as your HTML Editor.
3. In the Image Maps area.
Click on the type drop down box for options.
4. Choose Client Side Map to open automatically
in the browser without the aid of a CGI script on a server.

All files associated with the map are created. You can use the HTML page the program created as a starting point or you can copy and paste the code into your existing page.

Also remember to add "alt" tag text. This will help those with text readers and will help identify areas of the map as the page is loading.



End
Image
Maps