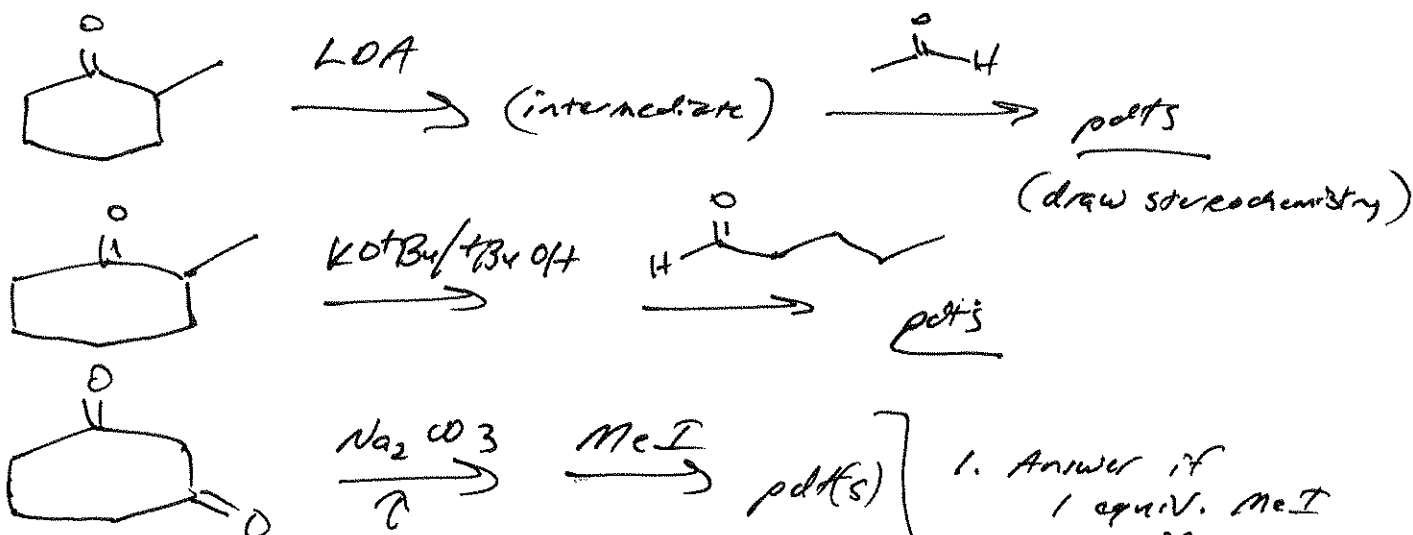


Problem Set 8

Five points. Due Friday, April 26, by the start of class.

Provide answers on a separate sheet(s) of paper, stapling together multiple pages.

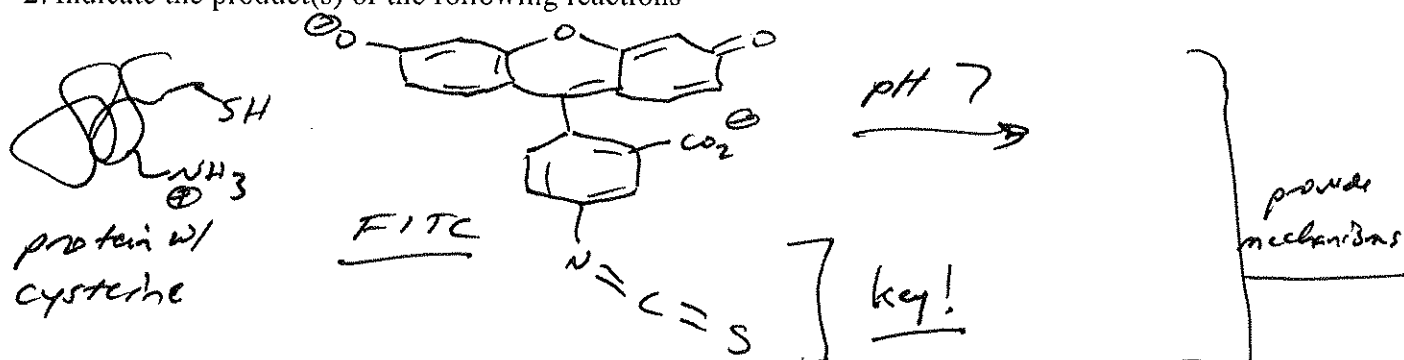
1. Indicate the mechanisms to show product formation in the following reactions.



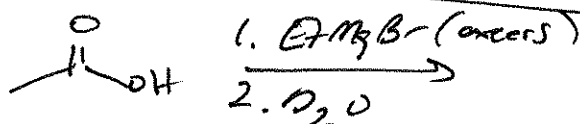
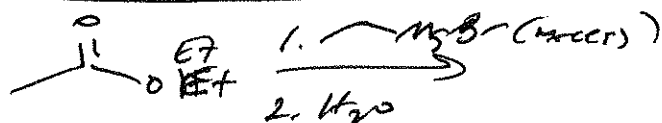
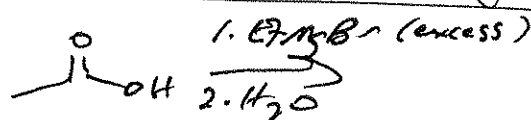
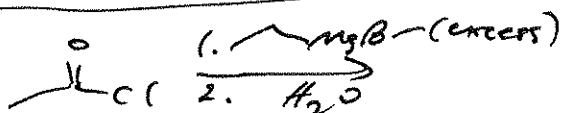
1. Answer if 1 equiv. MeI
2. Answer if excess MeI

↑ think carefully about the most stable enolate!

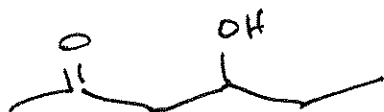
2. Indicate the product(s) of the following reactions



Note: additional product at pH 10. Why?



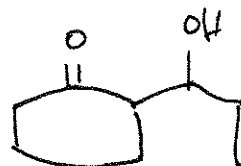
3. Propose a synthesis of the following compounds (from the given compounds).



from compounds with ≤ 3 carbons



from crystals with ≤ 3 carbons



≤ 6 carbons in C source