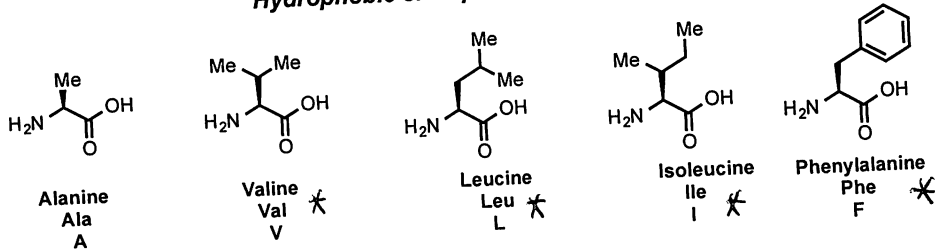
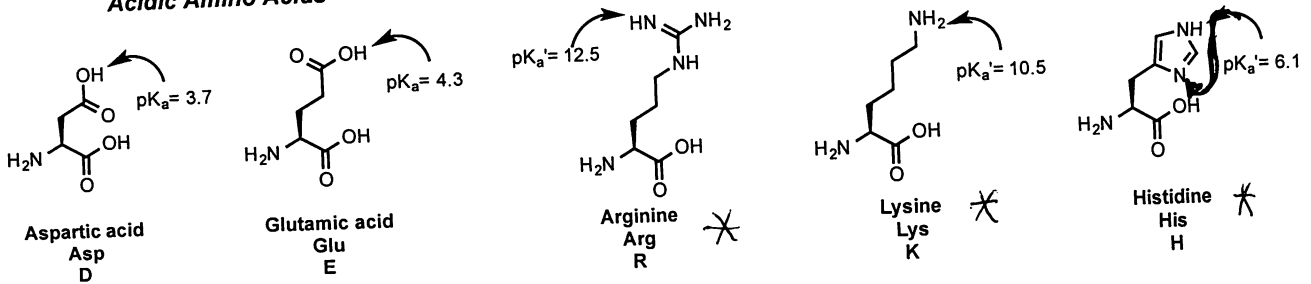


Natural Amino Acid

Hydrophobic or Aliphatic Amino Acids

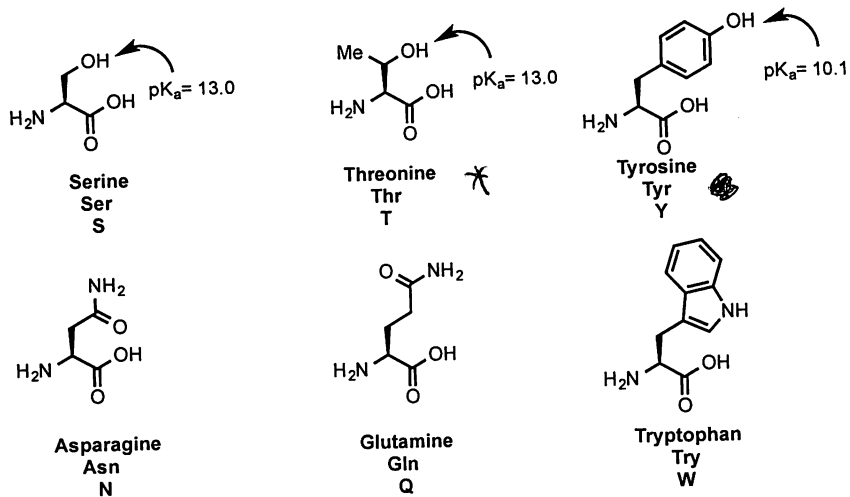


Acidic Amino Acids

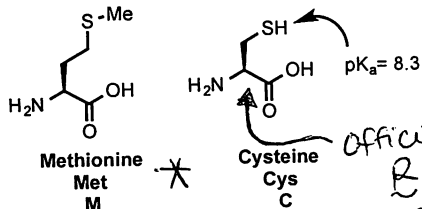


Basic Amino Acids

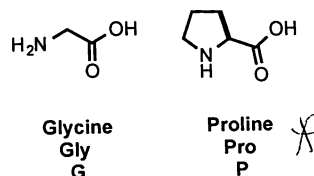
Polar/ Hydrogen bonding Amino Acids



Sulfur containing Amino Acids



Flexible/inflexible Amino Acids



official
 B
 b/c of
 priority
 assignments.

* = Essential amino acid.