

Research

Associate in Arts Program
 Undergraduate Trends
 Employees Compensation
 Master's Rank Vision Mission
 Newark Campus
 Staff Tuition Retention Rates
 Library
 Majors UDEW
 Delaware Enrollment
 Doctoral Health Sciences
 Degrees Baccalaureates
 Education & Human Development
 Revenue Expenses
 Dare to be first.
 UNIVERSITY OF DELAWARE
 Athletics Tenure Change Scores
 Institutional
 Finances Room & Board Salary
 Accreditors Competitors
 Status Educational Funding
 Sponsored
 Earth Ocean & Environment
 College Regional
 Students Development Operating
 Full-Time
 Faculty Graduation Rates Arts & Sciences
 Effectiveness Engineering Average
 Distribution
 Tenure-Track
 Business & Economics Ethnicity Agriculture & Natural Resources
 Employment Graduate Gender Admissions
 Applications



2012-13

Facts &

Institutional

Figures

Students

Faculty Graduation Rates

Effectiveness

Business & Economics

Ethnicity

Agriculture & Natural Resources

Employment Graduate

Gender

Admissions

Applications



FACTS & FIGURES

2012 – 2013

**Office of Institutional Research
University of Delaware Enterprise Warehouse (UDEW)**

John E. Sawyer

Interim Associate Provost for Institutional Research and Effectiveness
sawyerj@udel.edu

Heather A. Kelly

Director

hkelly@udel.edu

Allison M. Walters

Assistant Director

awalters@udel.edu

Kathleen F. Collison

Data Warehouse Manager

katc@udel.edu

Denise Lindsey

Institutional Research Analyst

dlindsey@udel.edu

Di Chen

Institutional Research Analyst

dchen@udel.edu

Patricia E. Kelly

Administrative Assistant II

pek@udel.edu

Telephone: (302) 831-2021 Fax: (302) 831-8530

E-mail: irp@udel.edu

Institutional Research Homepage on the Internet: <http://www.udel.edu/IR/>

UDEW Homepage on the Internet: <http://www.udel.edu/IR/UDEW/>

UD Homepage on the Internet: <http://www.udel.edu/>

MEMBERS OF THE BOARD OF TRUSTEES

As of September 2012

Ex-Officio Members

Jack Markell, *Governor of the State of Delaware*
Teri Quinn Gray, *President of the State Board of Education*
William H. Narvel, Jr., *Master of the State Grange*
Patrick T. Harker, *President of the University*

Officers of the Board

A. Gilchrist Sparks III, *Chairman*
John R. Cochran, *Vice Chair*
Mary Jane Willis, *Vice Chair*
Carey M. Koppenhaver, *Secretary-Treasurer*

Elected and Appointed Members

Tony Allen	T. Henley Graves
Grace Bennett	Scott A. Green
James C. Borel	Terri Kelly
Thomas J. Burns	Dennis E. Klima
Irwin G. Burton III	Cynthia Primo Martin
R.R.M. Carpenter III	Christopher H. Schell
Allison B. Castellanos	Everett C. Toomey
William B. Chandler III	H. Wesley Towers, Jr.
Howard E. Cosgrove	P. Coleman Townsend, Jr.
Robert A. Fischer, Jr.	Sherman L. Townsend
Michael S. Geltzeiler	John E. Wallace, Jr.
Stuart M. Grant	Kenneth C. Whitney

Honorary Counselor

Andrew B. Kirkpatrick, Jr.

Trustees *Emeriti*

Werner C. Brown	Sally H. Higgins
Robert W. Gore	

ADMINISTRATIVE LEADERS

PATRICK T. HARKER, President of the University

NANCY BRICKHOUSE, Interim Provost

ANN ARDIS, Interim Deputy Provost

SCOTT R. DOUGLASS, Executive Vice President and University Treasurer

JEFFREY W. GARLAND, Vice President and University Secretary

MICHAEL A. GILBERT, Vice President for Student Life

DEBORAH L. HAYES, Vice President for Communications and Marketing

CARL JACOBSON, Vice President for Information Technologies

CHARLES RIORDAN, Vice Provost for Research

DAVID SINGLETON, Vice President for Facilities and Auxiliary Services

MONICA M. TAYLOR, Vice President for Development and Alumni Relations

LAWRENCE WHITE, Vice President and General Counsel

PATRICIA PLUMMER WILSON, Vice President and Chief of Staff

ERIC ZIADY, Director of Athletics and Recreation Services

COLLEGE ADMINISTRATION

MARK RIEGER, Dean, College of Agriculture and Natural Resources

GEORGE WATSON, Dean, College of Arts and Sciences

BRUCE WEBER, Dean, Alfred Lerner College of Business and Economics

NANCY TARGETT, Dean, College of Earth, Ocean, and Environment

LYNN OKAGAKI, Dean, College of Education and Human Development

BABATUNDE A. OGUNNAIKE, Interim Dean, College of Engineering

KATHLEEN MATT, Dean, College of Health Sciences

As of February 2013

2012-13 FACTS & FIGURES

Table of Contents

	<u>Page No.</u>
Mission and Vision	1
At A Glance	3
Synopsis of Undergraduate Degree Programs and Majors	5
Synopsis of Graduate Degree Programs	7
Twenty-Five Most Popular Undergraduate Majors	9
Students	
Average SAT Scores By Residence for First-Time Freshmen	10
First-Time Freshman Admissions Activity.....	11
Distribution of Completed Admissions Applications and Accepted Offers	12
- Completed Applications and Offers Accepted (figure)	12
Enrollment By College or Division and Time Status	13
- Trends in Total Enrollment (figure).....	16
Ethnicity of Students By Time Status.....	17
Undergraduate Enrollment By Gender	19
Graduate Enrollment By Gender	20
Enrollment By Residence Status.....	21
Newark Campus Retention Rates	23
Newark Campus Graduation Rates.....	24
Associate in Arts Program Retention Rates.....	25
Associate in Arts Program Graduation Rates	26
Degrees Granted By College and Level.....	27
Employment and Educational Status of Baccalaureates.....	28
Personnel	
Employees By Ethnicity and IPEDS Occupational Category.....	29
Full-Time Employees By Gender	33
Number of Faculty By Rank and Tenure Status	34
Tenure Status Among Full-Time Tenure Track Faculty.....	35
Average Total Compensation of Full-Time Faculty.....	36
Full-Time Employees' Salary Principal Source of Funding	37

Table of Contents, continued

	<u>Page No.</u>
Finances	
Statement of Operating Activities.....	39
Operating Revenue, Expenses and Transfers (figure)	40
Change in Net Assets	41
Externally Sponsored Activities	42
Undergraduate Tuition, Fees, Room and Board Charges	43
Undergraduate Student Charges at Delaware and Admissions Competitors.....	44
Facilities	
Building Inventory	45
Land Inventory.....	46
University Library.....	47
University of Delaware Administrative Organizational Chart	
University of Delaware Regional, National and Specialized Accreditors	



MISSION AND VISION

MISSION STATEMENT

The University of Delaware exists to cultivate learning, develop knowledge, and foster the free exchange of ideas. State-assisted yet privately governed, the University has a strong tradition of distinguished scholarship, research, teaching, and service that is grounded in a commitment to increasing and disseminating scientific, humanistic, and social knowledge for the benefit of the larger society. Founded in 1743 and chartered by the state in 1833, the University of Delaware today is a land-grant, sea-grant, and space-grant university.

The University of Delaware is a major research university with extensive graduate programs that is also dedicated to outstanding undergraduate and professional education. University faculty are committed to the intellectual, cultural, and ethical development of students as citizens, scholars, and professionals. University graduates are prepared to contribute to a global society that requires leaders with creativity, integrity, and a dedication to service.

The University of Delaware promotes an environment in which all people are inspired to learn, and encourages intellectual curiosity, critical thinking, free inquiry, and respect for the views and values of an increasingly diverse population.

An institution engaged in addressing the critical needs of the state, nation, and global community, the University of Delaware carries out its mission with the support of alumni who span the globe and in partnership with public, private, and nonprofit institutions in Delaware and beyond.

GUIDING PRINCIPLES

The University of Delaware's strategic plan was adopted in May 2008 and defines the aspirations and initiatives that will advance the University on a Path to Prominence™. The following five guiding principles identify UD's core values:

- Delaware First
- Diversity
- Partnership
- Engagement
- Impact

STRATEGIC MILESTONES

The following strategic milestones build upon key strengths and critical capabilities of the University. The realization of each college, school, department and unit's strategic goals, aligned to these shared milestones, will assist in fulfilling the mission and vision of the University. In October 2010 a summary report assessing the University's progress on its Path to Prominence was developed and details the academic and administrative accomplishments, implementation efforts, current initiatives and future directions and challenges for UD. This report can be found at <http://www.udel.edu/prominence>.

- A Diverse and Stimulating Undergraduate Academic Environment
- A Premier Research and Graduate University
- Excellence in Professional Education
- The Initiative for the Planet
- The Global Initiative
- The Engaged University



2012-13

AT A GLANCE

History/Location: The University of Delaware, a state assisted institution, is a Land Grant, Sea Grant, Space Grant, Carnegie Research University (very high research activity). The University, with origins in 1743, was chartered by the State of Delaware in 1833. A Women's College was opened in 1914, and in 1945 UD became permanently coeducational. The main campus is located in Newark, Delaware, a suburban community of nearly 30,000, situated midway between Philadelphia and Baltimore. Courses are also offered at the Wilmington campus and at other locations throughout the State, including Dover, Georgetown, Milford, and Lewes.

Academic Schools, Programs, and Degrees: Agriculture and Natural Resources; Arts and Sciences; Business and Economics; Earth, Ocean, and Environment; Education and Human Development; Engineering; and Health Sciences. UD offers 3 associate's programs, 146 bachelor's programs, 119 master's programs (with 15 joint degrees offered within), and 58 doctoral programs. In 2011-12, UD awarded 303 associate's degrees, 3,535 bachelor's degrees, 785 master's degrees, and 262 doctoral degrees. Doctoral and professional degrees are awarded in Agriculture, Business and Economics, Computer Science, Education, Engineering, Human Development and Family Studies, Marine Studies, Nursing, Physical Therapy, and a range of Arts & Sciences disciplines (including Art History, Biological Sciences, Chemistry and Biochemistry, English, History, Linguistics and Cognitive Science, Applied Mathematics, Physics, Political Science and International Relations, Psychology, Sociology, and Urban Affairs and Public Policy).

Institutional Accreditation: The University of Delaware has been continuously accredited by the Middle States Commission on Higher Education since that association's inception in 1921. The University's accreditation was reaffirmed in 2011 and its next self-study evaluation is scheduled for 2016. The regional, national and specialized accrediting organizations that accredit UD's programs and degrees appear at the end of this book.

Faculty: In 2012-13, there are 1,128 full-time faculty positions. Almost 80% of full-time tenure-eligible faculty are tenured and almost 90% of full-time faculty hold the doctorate or terminal professional degree in their field. Average total compensation in 2012-13 is \$186,212 for Full Professors, \$129,548 for Associate Professors, and \$109,659 for Assistant Professors.

Enrollment: Fall 2012 enrollment totals 21,856 which include 17,484 undergraduates, 3,654 graduate students, and 718 professional and continuing studies students. 16,639 (95%) of undergraduate and 2,816 (77%) of graduate students are enrolled on a full-time basis. 43% of undergraduate students are male. 62% of undergraduate and 77% of graduate students are from out-of-state. 4.9% of undergraduate and 4.6% of graduate students are African-American. Approximately 44% of undergraduate students live in residence halls.

Admissions/Retention: Over 26,200 students applied to the University of Delaware for Fall 2012 enrollment. 4,229 (27.1%) first-time freshmen accepted their admission offers. Average SAT score (critical reading plus mathematics) for first-time Newark Campus freshmen was 1209. On average, 92% of Newark Campus freshmen return for their sophomore year and approximately 80% graduate within five years.

Costs: Annual full-time undergraduate tuition and fees for 2012-13 are \$11,682 (in-state) and \$28,772 (out-of-state). Room and board is \$10,758. Total undergraduate costs for 2012-13 are \$22,440 (in-state) and \$39,530 (out-of-state).

Finances: For Fiscal Year 2012, Total Operating Revenues were \$851.0 million, including \$112.4 million for State Appropriations. Total Operating Expenses and Transfers were \$851.0 million. Externally Funded Activity totaled \$195.2 million.

Institutional Affiliations: UD is a member of the Association of Public and Land Grant Universities (APLU). In athletics, UD began NCAA Division I competition in 1973 for men and 1982 for women. UD currently competes in the Colonial Athletic Association (CAA) for all sports. Football competes at the Championship Subdivision level, and all other sports compete at the Division I level.

SYNOPSIS OF UNDERGRADUATE DEGREE PROGRAMS AND MAJORS

COLLEGE OF AGRICULTURE AND NATURAL RESOURCES	<i>Associate in Science</i>	Agriculture and Natural Resources		
	<i>Bachelor of Arts</i>	Environmental Studies		
COLLEGE OF ARTS AND SCIENCES	<i>Bachelor of Science</i>	Agriculture and Natural Resources	Food Science	
		Agricultural Education	Food Science and Technology	
		Animal and Food Sciences	Landscape Horticulture and Design	
		Ecology	Natural Resource Management	
		Entomology	Plant Protection	
		Environmental and Resource Economics	Plant Science	
		Environmental Science	Pre-Veterinary Medicine and Animal Biosciences	
		Environmental Soil Science	Statistics	
		Food and Agribusiness Marketing and Management	Wildlife Conservation	
		<i>Associate in Arts</i>	University Studies	
		<i>Bachelor of Arts</i>	Anthropology	History Education
			Anthropology Education	International Relations
			Art	Italian Education
			Art Conservation	Latin American & Iberian Studies
			Art History	Latin Education
			Asian Studies	Liberal Arts - Engineering
			Biological Sciences	Liberal Studies
			Biological Sciences Education	Linguistics
			Black American Studies	Material Culture Preservation
Chemistry	Mathematics			
Chemistry Education	Mathematics Education			
Communication	Music			
Comparative Literature	Philosophy			
Criminal Justice	Physics			
English	Physics Education			
English Education	Political Science			
Environmental Studies	Political Science Education			
European Studies	Psychology			
Foreign Languages and Literatures	Psychology Education			
French Education	Public Policy			
French/Political Science	Sociology			
German Education	Sociology Education			
German/Political Science	Spanish Education			
History	Spanish/Political Science			
History and Foreign Language	Women and Gender Studies			
<i>Bachelor of Arts in Liberal Studies</i>	Liberal Studies			
<i>Bachelor of Fine Arts</i>	Fine Arts	Visual Communications		
<i>Bachelor of Music</i>	Applied Music--Instrumental	Music Education--Instrumental		
	Applied Music--Piano	Music History and Literature		
	Applied Music--Voice	Music Theory and Composition		
	Music Composition	Music Theory		
	Music Education--General/Choral			
<i>Bachelor of Science</i>	Apparel Design	Mathematics Education		
	Biochemistry	Mathematics and Economics		
	Biological Sciences	Neuroscience		
	Chemistry	Organizational & Community Leadership		
	Cognitive Science	Physics		
	Environmental Science	Psychology		
	Fashion Merchandising	Quantitative Biology		
	Leadership			
	Mathematics			
ALFRED LERNER COLLEGE OF BUSINESS AND ECONOMICS	<i>Bachelor of Arts</i>	Economics	Economics Education	
	<i>Bachelor of Science</i>	Accounting	International Business Studies	
Economics		Management		
Finance		Management Information Systems		
Hospitality Industry Studies		Marketing		
Hotel, Restaurant and Institutional Management		Operations Management		
		Sport Management		

COLLEGE OF EARTH, OCEAN, AND ENVIRONMENT	<i>Bachelor of Arts</i>	Environmental Studies Geography	Geography Education Geological Sciences
	<i>Bachelor of Science</i>	Earth Science Education Environmental Science	Geological Sciences Marine Science
COLLEGE OF EDUCATION AND HUMAN DEVELOPMENT	<i>Associate in Arts</i>	Elementary Teacher Education	
	<i>Bachelor of Science in Education</i>	Elementary Teacher Education	
	<i>Bachelor of Science</i>	Early Childhood Education	Human Services
COLLEGE OF ENGINEERING	<i>Bachelor of Arts</i>	Computer Science	
	<i>Bachelor of Science</i>	Computer Science Energy and Environmental Policy	Environmental Science Information Systems
	<i>Bachelor of Biomedical Engineering</i>	Biomedical Engineering	
	<i>Bachelor of Chemical Engineering</i>	Chemical Engineering	
	<i>Bachelor of Civil Engineering</i>	Civil Engineering	
	<i>Bachelor of Computer Engineering</i>	Computer Engineering	
	<i>Bachelor of Electrical Engineering</i>	Electrical Engineering	
	<i>Bachelor of Environmental Engineering</i>	Environmental Engineering	
<i>Bachelor of Mechanical Engineering</i>	Mechanical Engineering		
COLLEGE OF HEALTH SCIENCES	<i>Bachelor of Science</i>	Applied Nutrition Athletic Training Dietetics Exercise Science Health Behavior Management Health Behavior Science	Health and Physical Education Health Studies Medical Diagnostics Medical Laboratory Sciences Nutritional Sciences
	<i>Bachelor of Science in Nursing</i>	Nursing	Baccalaureate for the Registered Nurse (B.R.N.)

Source: Office of Institutional Research/UDEW

SYNOPSIS OF GRADUATE DEGREE PROGRAMS

COLLEGE OF AGRICULTURE AND NATURAL RESOURCES	<i>Master of Arts</i>	Agricultural Education	
	<i>Master of Science</i>	Agriculture and Resource Economics Animal Science Entomology Food Science Plant and Soil Sciences	Public Horticulture Statistics Water Science and Policy Wildlife Ecology
	<i>Doctor of Philosophy</i>	Animal and Food Science Bioinformatics and Systems Biology Entomology and Wildlife Ecology	Plant and Soil Sciences Water Science and Policy
COLLEGE OF ARTS AND SCIENCES	<i>Master of Arts</i>	American Material Culture Art Art History Chemistry Chemistry and Biochemistry Communication Criminology English Foreign Languages and Literatures Foreign Languages and Pedagogy Historic Preservation	History Liberal Studies Linguistics and Cognitive Science Mathematics Political Science and International Relations Psychology Sociology Technical Chinese Translation Urban Affairs and Public Policy
	<i>Master of Fine Arts</i>	Fine Arts	Theatre
	<i>Master of Music</i>	Music	
	<i>Master of Science</i>	Applied Mathematics Art Conservation Biological Sciences Biomechanics and Movement Science Biotechnology - Professional Science Master's Chemistry	Chemistry and Biochemistry Disaster Science and Management Fashion and Apparel Studies Mathematics Neuroscience Physics Water Science and Policy
	<i>Master of Public Administration</i>	Public Administration	
	<i>Doctor of Philosophy</i>	Applied Mathematics Art History Bioinformatics and Systems Biology Biological Sciences Biological Sciences/Neuroscience Biomechanics and Movement Science Chemistry Chemistry and Biochemistry Criminology Disaster Science and Management English	History Linguistics Mathematics Physics Political Science and International Relations Preservation Studies Psychology Sociology Water Science and Policy
	ALFRED LERNER COLLEGE OF BUSINESS AND ECONOMICS	<i>Master of Arts</i>	Economics Economic Education
<i>Dual MBA and Master of Arts</i>		Economics	
<i>Dual MBA and Engineering Master's Programs</i>		See the College of Engineering	
<i>Master of Business Administration</i>		Business Administration	
<i>Dual MBA and Master of Science</i>		Accounting Finance Information Systems and Technology Management	Organizational Effectiveness, Development and Change
<i>Master of Science</i>		Accounting Economics and Applied Econometrics Finance Hospitality Business Management	Information Systems and Technology Management Organizational Effectiveness, Development and Change
	<i>Doctor of Philosophy</i>	Economics	Economic Education

COLLEGE OF EARTH, OCEAN, AND ENVIRONMENT	<i>Master of Arts</i>	Geography		
	<i>Master of Marine Policy</i>	Marine Policy		
	<i>Master of Science</i>	Geography Geology Marine Studies	Ocean Engineering Water Science and Policy	
	<i>Doctor of Philosophy</i>	Bioinformatics and Systems Biology Climatology Geography Geology	Marine Studies Oceanography Ocean Engineering Water Science and Policy	
COLLEGE OF EDUCATION AND HUMAN DEVELOPMENT	<i>Master of Arts</i>	Counseling in Higher Education Education Economic Education	School Psychology Teaching English as a Second Language Teaching (M.A.T.)	
	<i>Master of Education</i>	Curriculum and Instruction Education Educational Leadership Educational Technology Exceptional Children and Youth	Higher Education Administration Reading School Counseling School Leadership	
	<i>Master of Instruction</i>	Education	Instruction	
	<i>Master of Science</i>	Evaluation	Human Development and Family Studies	
	<i>Educational Specialist</i>	School Psychology		
	<i>Doctor of Education</i>	Educational Leadership		
	<i>Doctor of Philosophy</i>	Economic Education Education	Family Studies Human Development and Family Studies	
	COLLEGE OF ENGINEERING	<i>Master of Applied Sciences</i>	Civil Engineering	
<i>Master of Chemical Engineering</i>		Chemical Engineering		
<i>Master of Chemical Engineering/MBA</i>		Chemical Engineering/Business Administration		
<i>Master of Civil Engineering</i>		Civil Engineering		
<i>Master of Civil Engineering/MBA</i>		Civil Engineering/Business Administration		
<i>Master of Energy and Environmental Policy</i>		Energy and Environmental Policy		
<i>Professional Science Master</i>		Bioinformatics		
<i>Master of Science</i>		Bioinformatics and Computational Biology Biomechanics and Movement Science Computer Science	Electrical and Computer Engineering Ocean Engineering Software Engineering Water Science and Policy	
<i>Master of Science/MBA</i>		Electrical and Computer Engineering/Business Administration		
<i>Master of Science in Mechanical Engineering</i>		Mechanical Engineering		
<i>Master of Science in Mechanical Engineering/MBA</i>		Mechanical Engineering/Business Administration		
<i>Master of Engineering: Mechanical</i>		Mechanical Engineering		
<i>Master of Engineering: Mechanical/MBA</i>		Engineering: Mechanical/Business Administration		
<i>Master of Materials Science and Engineering</i>		Materials Science and Engineering		
<i>Master of Materials Science and Engineering/MBA</i>		Materials Science and Engineering/Business Administration		
<i>Doctor of Philosophy</i>		Bioinformatics and Systems Biology Biomechanics and Movement Science Biomedical Engineering Chemical Engineering Civil Engineering Computer Science Electrical Engineering	Electrical and Computer Engineering Energy and Environmental Policy Materials Science and Engineering Mechanical Engineering Ocean Engineering Water Science and Policy	
COLLEGE OF HEALTH SCIENCES		<i>Master of Science</i>	Biomechanics and Movement Science Exercise Science Health Promotion	Health Services Administration Human Nutrition
		<i>Master of Science in Nursing</i>	Nursing	
	<i>Dual Bachelor of Science and Master of Science</i>	Nursing		
	<i>Doctor of Philosophy</i>	Applied Physiology Biomechanics and Movement Science	Medical Sciences Nursing Science	
	<i>Doctor of Physical Therapy</i>	Physical Therapy		

Source: Office of Institutional Research/UDEW

**TWENTY-FIVE MOST POPULAR
UNDERGRADUATE MAJORS**
Fall 2012

Rank	Major
1	Biological Sciences
2	Nursing
3	Finance
4	Exercise Science
5	Psychology
6	Elementary Teacher Education
7	Mechanical Engineering
8	Accounting
9	Chemical Engineering
10	Criminal Justice
11	Civil Engineering
12	Marketing
13	English
14	Political Science
15	Hotel, Restaurant & Institutional Management
16	Communication Interest
17	Human Services
18	Fashion Merchandising
19	History
20	International Relations
21	Business Undeclared ¹
22	Pre-Veterinary Medicine & Animal Biosciences
23	Communication
24	Dietetics
25	Computer Science

¹ In prior years, the Business Undeclared major was listed as Business Administration.
Note: Counts are based on First Majors only.

**AVERAGE SCHOLASTIC APTITUDE TEST SCORES
BY RESIDENCE FOR FIRST-TIME FRESHMEN
*Fall 2012***

SAT Critical Reading Scores	
Associate in Arts Total¹	486
Newark Campus	
Delawareans	573
Nonresidents	612
Total	599
National Avg.	496
SAT Mathematics Scores	
Associate in Arts Total¹	485
Newark Campus	
Delawareans	581
Nonresidents	625
Total	610
National Avg.	514
SAT Writing Scores	
Associate in Arts Total¹	476
Newark Campus	
Delawareans	565
Nonresidents	611
Total	595
National Avg.	488

¹ A small number of Non-resident students are included within the Associate in Arts Program averages.

Source: Office of Institutional Research/UDEW

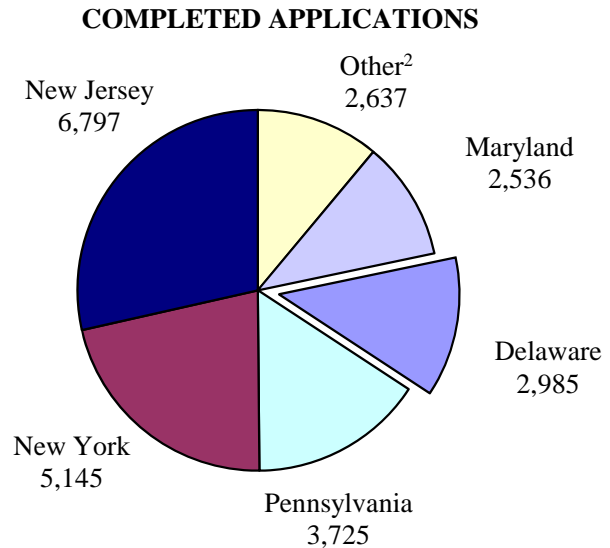
FIRST-TIME FRESHMAN ADMISSIONS ACTIVITY
Fall 2012

	Total Applications	Completed Applications	Offered Admission	Offer Rate	Offer Accepted	Yield Rate
ALL STUDENTS						
Applied to Newark Campus	26,771	26,224	14,829	56.5%	3,819	25.8%
Applied to Newark Campus, but admitted to Associate in Arts Program	--	--	749	2.9%	394	52.6%
Applied to Associate in Arts Program	26	25	20	80.0%	16	80.0%
TOTAL	26,797	26,249	15,598	59.4%	4,229	27.1%
DELAWAREANS						
Applied to Newark Campus	3,007	2,961	1,988	67.1%	1,293	65.0%
Applied to Newark Campus, but admitted to Associate in Arts Program	--	--	735	24.8%	383	52.1%
Applied to Associate in Arts Program	25	24	20	83.3%	16	80.0%
TOTAL	3,032	2,985	2,743	91.9%	1,692	61.7%
NONRESIDENTS						
Applied to Newark Campus	23,764	23,263	12,841	55.2%	2,526	19.7%
Applied to Newark Campus, but admitted to Associate in Arts Program	--	--	14	0.1%	11	78.6%
Applied to Associate in Arts Program	1	1	0	0.0%	0	--
TOTAL	23,765	23,264	12,855	55.3%	2,537	19.7%

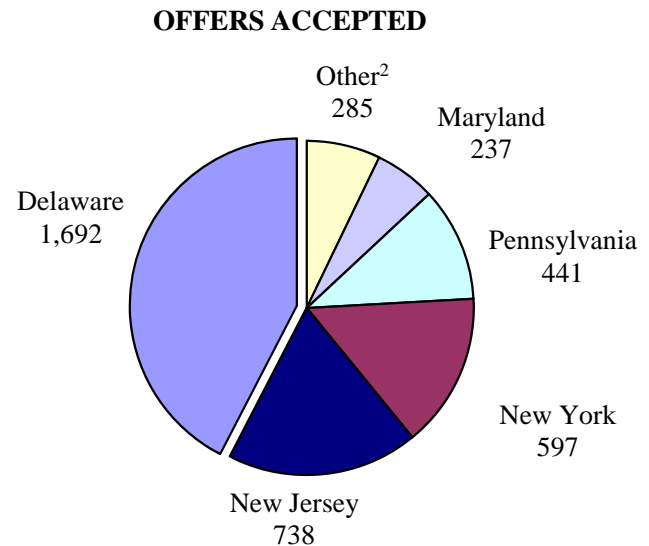
Source: Office of Institutional Research/UDEW

**DISTRIBUTION OF COMPLETED ADMISSIONS APPLICATIONS
AND ACCEPTED OFFERS
FIRST-TIME FRESHMEN FROM SELECT REGIONAL STATES
Fall 2012**

STATE	COMPLETED APPLICATIONS	% OF TOTAL ¹
New Jersey	6,797	28.5%
New York	5,145	21.6%
Pennsylvania	3,725	15.6%
DELAWARE	2,985	12.5%
Maryland	2,536	10.6%
Connecticut	1,062	4.5%
Massachusetts	977	4.1%
Virginia	520	2.2%
District of Columbia	78	0.3%
TOTAL¹	23,825	100.0%



STATE	OFFERS ACCEPTED	% OF TOTAL ¹
DELAWARE	1,692	42.4%
New Jersey	738	18.5%
New York	597	15.0%
Pennsylvania	441	11.1%
Maryland	237	5.9%
Massachusetts	111	2.8%
Connecticut	99	2.5%
Virginia	59	1.5%
District of Columbia	16	0.4%
TOTAL¹	3,990	100.0%



¹ Total refers to applications and accepted offers from these nine states only.

² Other includes Connecticut, Massachusetts, Virginia, and the District of Columbia.

**ENROLLMENT BY COLLEGE OR DIVISION
AND TIME STATUS
Fall 2008 Through Fall 2012**

	2008	2009	2010	2011	2012
UNIVERSITY TOTAL	20,500	21,138	21,177	21,489	21,856
Full-Time	17,881	18,469	18,621	19,022	19,458
Part-Time	2,619	2,669	2,556	2,467	2,398
Undergraduate¹	16,075	16,521	16,661	17,092	17,484
Full-Time	15,287	15,786	15,888	16,262	16,639
Part-Time	788	735	773	830	845
Graduate²	3,448	3,634	3,670	3,617	3,654
Full-Time	2,584	2,671	2,727	2,750	2,816
Part-Time	864	963	943	867	838
Professional & Continuing Studies³	977	983	846	780	718
Full-Time	10	12	6	10	3
Part-Time	967	971	840	770	715
College of Agriculture & Natural Resources	849	881	877	871	880
Undergraduate	669	698	713	705	702
Full-Time	623	657	670	657	668
Part-Time	46	41	43	48	34
Graduate	180	183	164	166	178
Full-Time	172	175	157	156	169
Part-Time	8	8	7	10	9
College of Arts & Sciences⁴	7,525	7,269	7,402	7,447	7,388
Undergraduate	6,288	6,162	6,262	6,321	6,241
Full-Time	5,914	5,821	5,935	5,961	5,892
Part-Time	374	341	327	360	349
Graduate	1,237	1,107	1,140	1,126	1,147
Full-Time	1,140	1,017	1,042	1,026	1,062
Part-Time	97	90	98	100	85
Office of University Studies	956	1,048	1,126	1,178	1,181
(No Graduate Program)					
Undergraduate	956	1,048	1,126	1,178	1,181
Full-Time	916	1,014	1,096	1,156	1,156
Part-Time	40	34	30	22	25

ENROLLMENT (Continued)

	2008	2009	2010	2011	2012
Alfred Lerner College of Business & Economics⁵	3,452	3,396	3,470	3,386	3,433
Undergraduate	2,906	2,786	2,826	2,797	2,845
Full-Time	2,835	2,720	2,757	2,728	2,767
Part-Time	71	66	69	69	78
Graduate	546	610	644	589	588
Full-Time	253	281	341	329	345
Part-Time	293	329	303	260	243
College of Earth, Ocean, & Environment⁶	165	310	368	429	485
Undergraduate	47	167	215	272	335
Full-Time	44	160	207	264	322
Part-Time	3	7	8	8	13
Graduate	118	143	153	157	150
Full-Time	114	139	149	152	145
Part-Time	4	4	4	5	5
College of Education & Human Development	2,071	2,107	1,448	1,410	1,348
Undergraduate	1,401	1,396	997	1,021	1,011
Full-Time	1,345	1,364	965	991	978
Part-Time	56	32	32	30	33
Graduate	670	711	451	389	337
Full-Time	380	409	201	189	162
Part-Time	290	302	250	200	175
College of Engineering⁷	1,845	2,056	2,577	2,883	3,091
Undergraduate	1,336	1,510	1,820	2,060	2,226
Full-Time	1,303	1,482	1,770	1,992	2,158
Part-Time	33	28	50	68	68
Graduate	509	546	757	823	865
Full-Time	463	484	673	731	746
Part-Time	46	62	84	92	119
College of Health Sciences⁸	1,992	2,324	2,289	2,353	2,557
Undergraduate	1,804	1,990	1,928	1,986	2,168
Full-Time	1,659	1,824	1,740	1,799	1,955
Part-Time	145	166	188	187	213
Graduate	188	334	361	367	389
Full-Time	62	166	164	167	187
Part-Time	126	168	197	200	202

ENROLLMENT (Continued)

	2008	2009	2010	2011	2012
Newark Campus	18,855	19,391	19,557	19,957	20,363
Undergraduate	15,407	15,757	15,887	16,340	16,709
Full-Time	14,639	15,042	15,140	15,548	15,896
Part-Time	768	715	747	792	813
Graduate	3,448	3,634	3,670	3,617	3,654
Full-Time	2,584	2,671	2,727	2,750	2,816
Part-Time	864	963	943	867	838
Associate in Arts: Georgetown	148	156	168	148	133
Undergraduate	148	156	168	148	133
Full-Time	144	153	162	145	132
Part-Time	4	3	6	3	1
Associate in Arts: Dover	112	146	144	121	144
Undergraduate	112	146	144	121	144
Full-Time	107	144	141	116	140
Part-Time	5	2	3	5	4
Associate in Arts: Wilmington	408	462	462	483	498
Undergraduate	408	462	462	483	498
Full-Time	397	447	445	453	471
Part-Time	11	15	17	30	27
University Associate in Arts Program	668	764	774	752	775
Undergraduate	668	764	774	752	775
Full-Time	648	744	748	714	743
Part-Time	20	20	26	38	32

¹ Official 10th Day headcounts, Newark Campus and University Associate in Arts Program combined.

² Graduate students on sustaining status are considered full-time if the student spends at least one-half time on the completion of his/her thesis or dissertation.

³ Professional & Continuing Studies Students are non-matriculated and are unclassified although enrolled in undergraduate and graduate degree credit courses.

⁴ The Fashion and Apparel Studies Department and the School of Public Policy and Administration moved to the College of Arts and Sciences in 2010.

⁵ The Hotel, Restaurant & Institutional Management Department and the Sport Management/Sport Management Interest Program moved to the Alfred Lerner College of Business and Economics in 2008 and 2010, respectively.

⁶ The Geography Department moved to the College of Earth, Ocean, & Environment in 2009.

⁷ The Computer Science Department and the Energy and Environmental Policy Program moved to the College of Engineering in 2010.

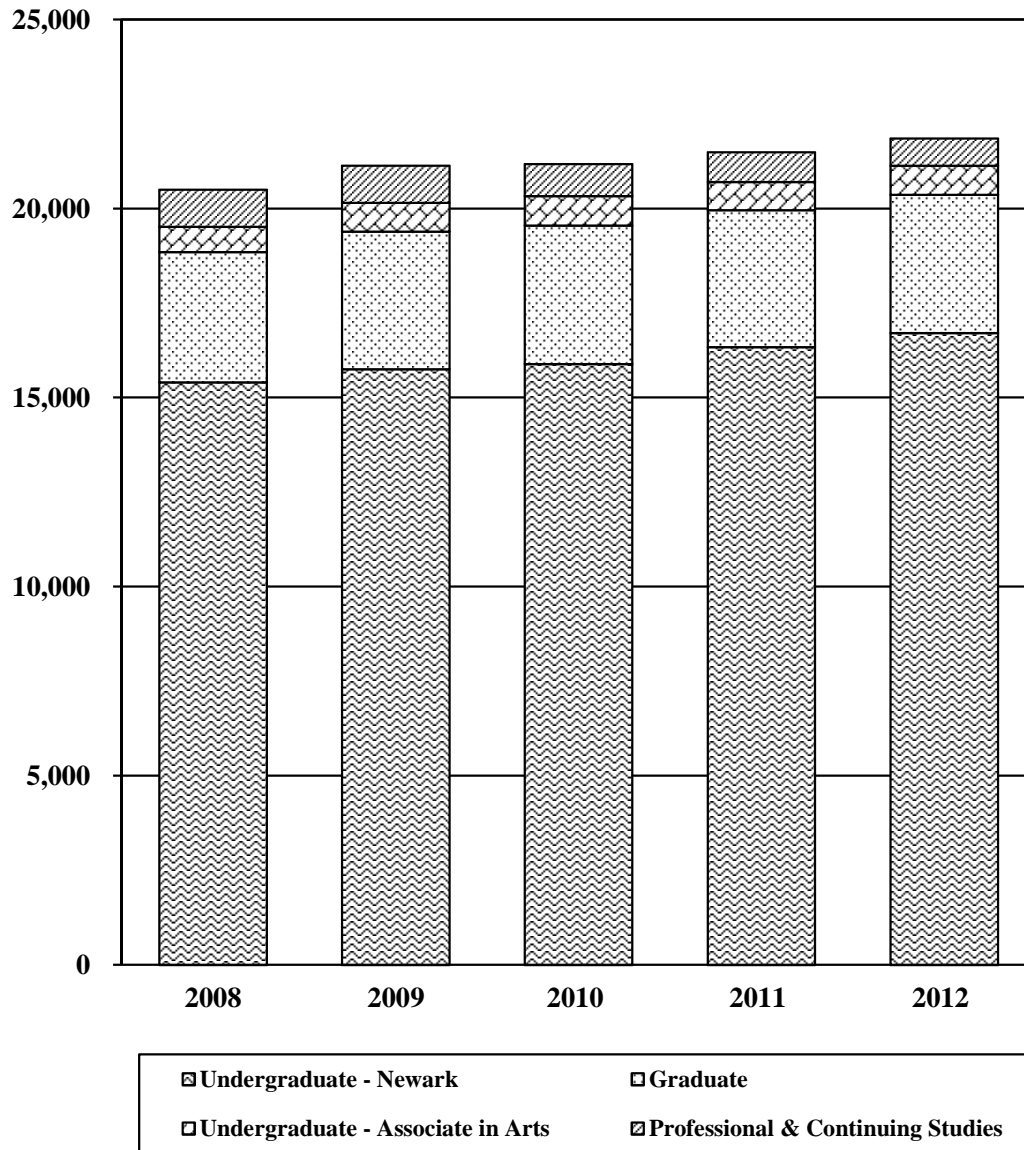
⁸ The Department of Physical Therapy moved to the College of Health Sciences in 2009.

Note: Counts are based on First Majors only.

Source: Office of Institutional Research/UDEW

TRENDS IN TOTAL ENROLLMENT

Fall 2008 Through Fall 2012



ETHNICITY OF STUDENTS BY TIME STATUS
Fall 2008 Through Fall 2012

A. FULL-TIME MATRICULATED STUDENTS

	2008		2009		2010		2011		2012	
	N	%	N	%	N	%	N	%	N	%
Undergraduate¹										
Total	15,287	100.0	15,786	100.0	15,888	100.0	16,262	100.0	16,639	100.0
White	12,256	80.2	12,398	78.5	12,291	77.4	12,587	77.4	12,823	77.1
African-American	839	5.5	865	5.5	831	5.2	716	4.4	771	4.6
Hispanic	831	5.4	885	5.6	909	5.7	966	5.9	1,041	6.3
Asian	643	4.2	680	4.3	635	4.0	620	3.8	637	3.8
Native American	42	0.3	29	0.2	20	0.1	15	0.1	10	0.1
International	160	1.0	304	1.9	522	3.3	689	4.2	707	4.2
Other ²	516	3.4	625	4.0	680	4.3	669	4.1	650	3.9
Graduate										
Total	2,584	100.0	2,671	100.0	2,727	100.0	2,750	100.0	2,816	100.0
White	1,410	54.6	1,414	52.9	1,429	52.4	1,330	48.4	1,336	47.4
African-American	108	4.2	103	3.9	94	3.4	106	3.9	99	3.5
Hispanic	50	1.9	63	2.4	58	2.1	63	2.3	71	2.5
Asian	73	2.8	72	2.7	82	3.0	97	3.5	102	3.6
Native American	9	0.3	11	0.4	7	0.3	4	0.1	4	0.1
International	874	33.8	947	35.5	988	36.2	1,052	38.3	1,123	39.9
Other ²	60	2.3	61	2.3	69	2.5	98	3.6	81	2.9

B. PART-TIME MATRICULATED STUDENTS

	2008		2009		2010		2011		2012	
	N	%	N	%	N	%	N	%	N	%
Undergraduate¹										
Total	788	100.0	735	100.0	773	100.0	830	100.0	845	100.0
White	624	79.2	573	78.0	599	77.5	633	76.3	625	74.0
African-American	57	7.2	62	8.4	57	7.4	82	9.9	78	9.2
Hispanic	26	3.3	32	4.4	32	4.1	39	4.7	51	6.0
Asian	28	3.6	28	3.8	34	4.4	30	3.6	30	3.6
Native American	8	1.0	4	0.5	2	0.3	1	0.1	4	0.5
International	14	1.8	6	0.8	8	1.0	11	1.3	17	2.0
Other ²	31	3.9	30	4.1	41	5.3	34	4.1	40	4.7

B. PART-TIME MATRICULATED STUDENTS (Continued)

	2008		2009		2010		2011		2012	
	N	%	N	%	N	%	N	%	N	%
Graduate										
Total	864	100.0	963	100.0	943	100.0	867	100.0	838	100.0
White	666	77.1	726	75.4	678	71.9	622	71.7	624	74.5
African-American	56	6.5	75	7.8	84	8.9	68	7.8	69	8.2
Hispanic	25	2.9	25	2.6	30	3.2	29	3.3	21	2.5
Asian	54	6.3	58	6.0	66	7.0	61	7.0	67	8.0
Native American	3	0.3	3	0.3	4	0.4	2	0.2	0	0.0
International	26	3.0	30	3.1	32	3.4	31	3.6	35	4.2
Other ²	34	3.9	46	4.8	49	5.2	54	6.2	22	2.6

C. PROFESSIONAL & CONTINUING STUDIES STUDENTS

	2008		2009		2010		2011		2012	
	N	%	N	%	N	%	N	%	N	%
Undergraduate										
Total	977	100.0	983	100.0	846	100.0	780	100.0	718	100.0
White	682	69.8	700	71.2	560	66.2	516	66.2	489	68.1
African-American	101	10.3	86	8.7	87	10.3	81	10.4	62	8.6
Hispanic	31	3.2	26	2.6	30	3.5	26	3.3	28	3.9
Asian	55	5.6	61	6.2	48	5.7	48	6.2	45	6.3
Native American	4	0.4	6	0.6	8	0.9	4	0.5	2	0.3
International	44	4.5	65	6.6	60	7.1	31	4.0	31	4.3
Other ²	60	6.1	39	4.0	53	6.3	74	9.5	61	8.5

¹ Official 10th Day headcounts, Newark Campus and University Associate in Arts Program combined.

² Other includes Native Hawaiian or Other Pacific Islander, Two or More Races, Non-Specified, or Unknown.

Note: Percentages may not total to 100.0 because of rounding.

Source: Office of Institutional Research/UDEW

**UNDERGRADUATE ENROLLMENT BY GENDER
NEWARK CAMPUS
Fall 2008 Through Fall 2012**

	2008		2009		2010		2011		2012	
	N	%	N	%	N	%	N	%	N	%
Total - Newark Campus										
Female	8,906	58	9,081	58	9,067	57	9,336	57	9,594	57
Male	6,501	42	6,676	42	6,820	43	7,004	43	7,115	43
College of Agriculture & Natural Resources										
Female	407	61	433	62	449	63	447	63	453	65
Male	262	39	265	38	264	37	258	37	249	35
College of Arts & Sciences¹										
Female	3,725	59	3,691	60	3,889	62	3,947	62	3,980	64
Male	2,563	41	2,471	40	2,373	38	2,374	38	2,261	36
Alfred Lerner College of Business & Economics²										
Female	1,280	44	1,232	44	1,205	43	1,201	43	1,224	43
Male	1,626	56	1,554	56	1,620	57	1,596	57	1,621	57
College of Earth, Ocean, & Environment³										
Female	22	47	79	47	111	52	143	53	180	54
Male	25	53	88	53	104	48	129	47	155	46
College of Education & Human Development										
Female	1,297	93	1,301	93	948	95	972	95	951	94
Male	104	7	95	7	49	5	49	5	60	6
College of Engineering⁴										
Female	274	21	288	19	339	19	412	20	467	21
Male	1,062	79	1,222	81	1,481	81	1,648	80	1,759	79
College of Health Sciences										
Female	1,339	74	1,452	73	1,516	79	1,559	78	1,697	78
Male	465	26	538	27	413	21	427	22	471	22
Office of University Studies										
Female	562	59	605	58	610	54	655	56	642	54
Male	394	41	443	42	516	46	523	44	539	46

¹ The Fashion and Apparel Studies Department and the School of Public Policy and Administration moved to the College of Arts and Sciences in 2010.

² The Hotel, Restaurant & Institutional Management Department and the Sport Management/Sport Management Interest Program moved to the Alfred Lerner College of Business and Economics in 2008 and 2010, respectively.

³ The Geography Department moved to the College of Earth, Ocean, & Environment in 2009.

⁴ The Computer Science Department and the Energy and Environmental Policy Program moved to the College of Engineering in 2010.

Note: Gender is reported according to Federal IPEDS standards.

GRADUATE ENROLLMENT BY GENDER
NEWARK CAMPUS
Fall 2008 Through Fall 2012

	2008		2009		2010		2011		2012	
	N	%	N	%	N	%	N	%	N	%
Total - Newark Campus										
Female	1,802	52	1,889	52	1,895	52	1,820	50	1,842	50
Male	1,646	48	1,745	48	1,775	48	1,797	50	1,812	50
College of Agriculture & Natural Resources										
Female	95	53	98	54	96	59	89	54	94	53
Male	85	47	85	46	68	41	77	46	84	47
College of Arts & Sciences¹										
Female	677	55	595	54	639	56	616	55	625	54
Male	560	45	512	46	501	44	510	45	522	46
Alfred Lerner College of Business & Economics²										
Female	223	41	253	41	285	44	266	45	284	48
Male	323	59	357	59	359	56	323	55	304	52
College of Earth, Ocean, & Environment³										
Female	54	46	74	52	79	52	77	49	73	49
Male	64	54	69	48	74	48	80	51	77	51
College of Education & Human Development										
Female	459	69	482	68	310	69	271	70	240	71
Male	211	31	229	32	141	31	118	30	97	29
College of Engineering⁴										
Female	134	26	135	25	198	26	214	26	218	25
Male	375	74	411	75	559	74	609	74	647	75
College of Health Sciences⁵										
Female	160	85	252	75	288	80	287	78	308	79
Male	28	15	82	25	73	20	80	22	81	21

¹ The Fashion and Apparel Studies Department and the School of Public Policy and Administration moved to the College of Arts and Sciences in 2010.

² The Hotel, Restaurant & Institutional Management Department moved to the Alfred Lerner College of Business and Economics in 2008.

³ The Geography Department moved to the College of Earth, Ocean, & Environment in 2009.

⁴ The Computer Science Department and the Energy and Environmental Policy Program moved to the College of Engineering in 2010.

⁵ The Department of Physical Therapy moved to the College of Health Sciences in 2009.

Note: Gender is reported according to Federal IPEDS standards.

Source: Office of Institutional Research/UDEW

ENROLLMENT BY RESIDENCE STATUS
Fall 2008 Through Fall 2012

	2008		2009		2010		2011		2012	
	N	%	N	%	N	%	N	%	N	%
TOTAL STUDENTS	20,500		21,138		21,177		21,489		21,856	
Delawareans	8,022	39	8,261	39	8,295	39	8,183	38	8,502	39
Nonresidents	12,478	61	12,877	61	12,882	61	13,306	62	13,354	61
NEWARK CAMPUS										
Undergraduate	15,407		15,757		15,887		16,340		16,709	
Delawareans	5,613	36	5,678	36	5,870	37	5,932	36	6,346	38
Nonresidents	9,794	64	10,079	64	10,017	63	10,408	64	10,363	62
Graduate	3,448		3,634		3,670		3,617		3,654	
Delawareans	1,041	30	1,113	31	1,042	28	929	26	856	23
Nonresidents	2,407	70	2,521	69	2,628	72	2,688	74	2,798	77
ASSOCIATE IN ARTS PROGRAM	668		764		774		752		775	
Delawareans	652	98	747	98	755	98	737	98	759	98
Nonresidents	16	2	17	2	19	3	15	2	16	2
PROFESSIONAL & CONTINUING STUDIES	977		983		846		780		718	
Delawareans	716	73	723	74	628	74	585	75	541	75
Nonresidents	261	27	260	26	218	26	195	25	177	25

Source: Office of Institutional Research/UDEW

**RETENTION RATES FOR
ENTERING FIRST-TIME, FULL-TIME FRESHMEN
BY GENDER, ETHNICITY & RESIDENCY
NEWARK CAMPUS**

NEWARK CAMPUS	2002	2003	2004	2005	2006	2007	2008	2009	2010	2011
Total # of Freshmen	3,401	3,433	3,442	3,506	3,252	3,571	3,497	3,806	3,365	3,905
% Retention to 2nd Fall	89.9%	88.4%	88.8%	90.3%	90.4%	91.3%	91.2%	91.9%	92.5%	91.9%
Female	90.6%	89.2%	88.4%	90.7%	90.7%	91.5%	91.4%	91.4%	92.8%	92.3%
Male	88.8%	87.4%	89.5%	89.7%	90.3%	91.1%	90.9%	92.6%	92.1%	91.3%
African-American	87.0%	89.1%	85.9%	87.0%	88.4%	89.6%	86.8%	88.2%	88.4%	85.8%
American Indian	71.4%	81.8%	87.5%	84.2%	71.4%	100.0%	100.0%	100.0%	0.0%	--
Asian	89.9%	89.0%	86.1%	87.7%	88.6%	91.0%	92.6%	91.8%	96.6%	95.4%
Hispanic	83.3%	84.9%	82.1%	85.8%	88.4%	91.0%	91.8%	90.1%	88.8%	89.4%
International	80.0%	85.7%	66.7%	77.8%	100.0%	87.9%	86.0%	90.9%	95.2%	90.9%
White	90.3%	88.7%	89.6%	91.0%	90.6%	91.7%	91.4%	92.4%	92.5%	92.2%
Resident	89.0%	87.3%	88.5%	88.9%	91.5%	91.8%	92.1%	93.5%	93.9%	93.7%
Nonresident	90.3%	89.2%	89.0%	91.0%	89.9%	91.1%	90.8%	91.1%	91.8%	91.1%

*Note: All entering new freshman cohorts adjusted to comply with IPEDS Graduation Rate Survey Definitions.
Data obtained from UD Persisters DataMart for 2007 and subsequent cohorts, and from official enrollment extracts for cohorts prior to 2007.*

Source: Office of Institutional Research/UDEW

**GRADUATION RATES FOR
ENTERING FIRST-TIME, FULL-TIME FRESHMEN
BY GENDER, ETHNICITY & RESIDENCY
NEWARK CAMPUS**

NEWARK CAMPUS	2002	2003	2004	2005	2006	2007
Total Number in Cohort	3,401	3,433	3,442	3,506	3,252	3,571
% Graduating within Four Years	67.1	61.3	61.8	65.2	66.9	68.5
Female	72.8	66.9	67.3	71.3	71.5	73.6
Male	58.2	53.9	54.1	56.3	60.0	61.0
African-American	41.1	44.4	38.7	45.2	42.5	43.4
American Indian	14.3	25.0	57.1	50.0	14.3	80.0
Asian	62.0	59.9	51.6	61.3	60.1	69.9
Hispanic	66.1	54.5	54.8	57.5	57.8	63.5
International	42.1	52.4	46.2	30.8	20.0	45.5
White	69.0	63.3	64.5	67.2	68.9	70.8
Resident	55.7	49.4	51.0	53.5	56.5	56.6
Nonresident	73.7	69.1	68.0	71.0	71.6	73.4
% Graduating within Five Years	77.9	73.7	74.9	76.0	77.8	79.5
Female	81.2	76.9	77.1	80.3	80.4	82.9
Male	72.7	69.4	71.8	69.9	73.8	74.5
African-American	56.8	59.6	52.8	60.1	61.6	59.4
American Indian	42.9	50.0	71.4	60.0	42.9	80.0
Asian	74.1	71.5	67.7	70.8	74.7	78.8
Hispanic	71.6	68.5	67.5	69.4	72.8	74.6
International	57.9	76.2	53.8	38.5	20.0	51.5
White	79.6	75.3	77.3	78.0	79.1	81.9
Resident	72.0	66.4	69.0	69.1	72.4	74.5
Nonresident	82.0	78.5	78.2	79.5	80.2	81.6
% Graduating within Six Years	79.5	75.3	77.1	78.4	79.9	
Female	82.3	78.1	78.5	82.1	81.5	
Male	75.3	71.6	75.2	73.1	77.4	
African-American	58.9	61.6	56.3	64.3	67.1	
American Indian	57.1	50.0	85.7	65.0	42.9	
Asian	79.2	72.2	73.7	73.0	77.2	
Hispanic	73.4	69.7	70.5	73.6	74.1	
International	57.9	76.2	53.8	46.2	20.0	
White	81.1	76.9	79.2	80.1	81.1	
Resident	73.7	69.5	73.0	73.4	76.8	
Nonresident	82.3	79.3	79.5	80.9	81.3	

Note: Data comply with IPEDS Graduation Rate Survey Definitions.

Data obtained from UD Persisters DataMart for 2007 cohort, and from official enrollment extracts for cohorts prior to 2007.

Source: Office of Institutional Research/UDEW

**RETENTION RATES FOR
ENTERING FIRST-TIME, FULL-TIME FRESHMEN
BY GENDER, ETHNICITY & RESIDENCY
ASSOCIATE IN ARTS PROGRAM**

ASSOCIATE IN ARTS PROGRAM	2007	2008	2009	2010	2011
GEORGETOWN					
Total # of Freshmen	63	78	83	90	69
% Retention to 2nd Fall	90.5%	73.1%	77.1%	73.3%	75.4%
Female	93.3%	75.6%	69.6%	76.0%	75.0%
Male	83.3%	69.7%	92.6%	70.0%	75.9%
African-American	100.0%	85.7%	100.0%	100.0%	100.0%
American Indian	--	--	--	--	--
Asian	50.0%	100.0%	100.0%	0.0%	66.7%
Hispanic	100.0%	0.0%	50.0%	72.7%	81.8%
International	--	--	--	--	--
White	90.9%	73.0%	75.4%	74.0%	72.9%
Resident	90.5%	74.0%	77.1%	73.0%	75.4%
Nonresident	--	0.0%	--	100.0%	--
DOVER					
Total # of Freshmen	71	52	84	69	49
% Retention to 2nd Fall	78.9%	73.1%	75.0%	85.5%	81.6%
Female	80.0%	76.9%	70.6%	84.6%	80.8%
Male	77.8%	69.2%	81.8%	86.7%	82.6%
African-American	66.7%	100.0%	83.3%	81.8%	100.0%
American Indian	--	--	--	--	--
Asian	100.0%	50.0%	100.0%	0.0%	100.0%
Hispanic	80.0%	100.0%	33.3%	100.0%	75.0%
International	--	--	100.0%	--	100.0%
White	80.0%	70.5%	73.5%	87.8%	79.5%
Resident	78.9%	74.5%	75.3%	85.5%	81.2%
Nonresident	--	0.0%	66.7%	--	100.0%
WILMINGTON					
Total # of Freshmen	208	207	238	195	220
% Retention to 2nd Fall	81.7%	72.9%	78.2%	80.5%	84.5%
Female	81.2%	69.0%	77.9%	81.6%	83.7%
Male	82.1%	77.7%	78.4%	79.4%	85.2%
African-American	83.3%	71.4%	93.5%	73.7%	94.4%
American Indian	100.0%	0.0%	--	100.0%	0.0%
Asian	100.0%	66.7%	87.5%	90.0%	87.5%
Hispanic	100.0%	54.5%	65.0%	77.8%	91.3%
International	66.7%	100.0%	100.0%	100.0%	--
White	79.5%	74.3%	74.7%	80.7%	82.5%
Resident	81.6%	72.6%	78.2%	81.0%	84.9%
Nonresident	85.7%	83.3%	77.8%	66.7%	50.0%
TOTAL ASSOCIATE IN ARTS PROGRAM					
Total # of Freshmen	342	337	405	354	338
% Retention to 2nd Fall	82.7%	73.0%	77.3%	79.7%	82.2%
Female	84.1%	71.7%	74.2%	80.7%	81.0%
Male	81.3%	74.5%	81.2%	78.4%	83.3%
African-American	80.6%	75.0%	93.0%	78.8%	95.7%
American Indian	100.0%	0.0%	--	100.0%	0.0%
Asian	94.7%	77.8%	90.9%	75.0%	85.0%
Hispanic	93.8%	57.1%	59.3%	79.2%	86.8%
International	66.7%	100.0%	100.0%	100.0%	100.0%
White	82.0%	73.4%	74.6%	80.1%	80.1%
Resident	82.7%	73.3%	77.4%	79.8%	82.4%
Nonresident	85.7%	62.5%	75.0%	71.4%	66.7%

*Note: All entering new freshman cohorts adjusted to comply with IPEDS Graduation Rate Survey Definitions.
Data obtained from UD Persisters DataMart for 2007 and subsequent cohorts, and from official enrollment extracts for cohorts prior to 2007.*

Source: Office of Institutional Research/UDEW

**GRADUATION RATES FOR
ENTERING FIRST-TIME, FULL-TIME FRESHMEN
BY GENDER, ETHNICITY & RESIDENCY
ASSOCIATE IN ARTS PROGRAM**

ASSOCIATE IN ARTS PROGRAM	2004	2005	2006	2007	2008
GEORGETOWN					
Total Number in Cohort	83	58	70	63	78
% Graduating with AA within Two Years	9.6	12.1	34.3	46.0	32.1
% Graduating with AA within Three Years	18.1	29.3	47.1	74.6	52.6
% Graduating with AA within Four Years	20.5	31.0	51.4	76.2	55.1
DOVER					
Total Number in Cohort	47	73	54	71	52
% Graduating with AA within Two Years	40.4	34.2	33.3	43.7	42.3
% Graduating with AA within Three Years	46.8	52.1	46.3	60.6	63.5
% Graduating with AA within Four Years	48.9	52.1	51.9	62.0	63.5
WILMINGTON					
Total Number in Cohort	190	181	191	208	207
% Graduating with AA within Two Years	21.5	24.5	31.4	18.3	29.5
% Graduating with AA within Three Years	49.2	46.7	54.5	58.2	54.6
% Graduating with AA within Four Years	50.8	51.6	57.1	62.0	59.9
TOTAL ASSOCIATE IN ARTS PROGRAM					
Total Number in Cohort	320	312	315	342	337
% Graduating with AA within Two Years	21.2	24.4	32.4	28.7	32.0
Female	20.1	24.2	37.9	30.7	33.7
Male	22.2	24.8	25.5	26.5	30.1
African-American	14.8	11.8	14.3	19.4	25.0
American Indian	33.3	--	--	0.0	0.0
Asian	40.0	23.1	37.5	26.3	22.2
Hispanic	45.5	30.0	22.2	43.8	42.9
International	25.0	0.0	100.0	66.7	0.0
White	19.7	25.8	32.7	29.1	32.4
Resident	21.5	25.1	32.2	28.4	32.5
Nonresident	10.0	8.3	37.5	42.9	12.5
% Graduating with AA within Three Years	40.8	44.8	51.4	61.7	55.5
Female	34.6	43.8	54.0	63.1	55.4
Male	46.9	46.0	48.2	60.2	55.6
African-American	33.3	47.1	28.6	50.0	45.5
American Indian	66.7	--	--	0.0	0.0
Asian	50.0	46.2	62.5	78.9	33.3
Hispanic	63.6	50.0	55.6	68.8	50.0
International	25.0	50.0	100.0	66.7	0.0
White	40.2	44.0	51.2	62.1	58.3
Resident	40.5	44.9	51.5	61.5	55.9
Nonresident	50.0	41.7	50.0	71.4	37.5
% Graduating with AA within Four Years	42.7	47.9	54.9	64.6	59.3
Female	35.8	46.1	56.9	67.0	59.8
Male	49.4	50.4	52.5	62.0	58.8
African-American	40.7	50.0	35.7	50.0	54.5
American Indian	66.7	--	--	0.0	0.0
Asian	50.0	69.2	75.0	78.9	33.3
Hispanic	63.6	50.0	66.7	68.8	50.0
International	50.0	50.0	100.0	66.7	0.0
White	41.3	46.0	53.2	65.5	61.8
Resident	42.1	48.2	55.0	64.5	59.9
Nonresident	60.0	41.7	50.0	71.4	37.5

Note: Data comply with IPEDS Graduation Rate Survey Definitions.

Associate in Arts Program graduation rates recalculated to reflect July 1 through June 30.

Data obtained from UD Persisters DataMart for 2007 cohort, and from official enrollment extracts for cohorts prior to 2007.

Source: Office of Institutional Research/UDEW

DEGREES GRANTED BY COLLEGE AND LEVEL
2007-08 Through 2011-12

	2008	2009	2010	2011	2012
UNIVERSITY TOTALS	4,591	4,742	4,497	4,938	4,885
Associate's Degrees	188	195	254	252	303
Bachelor's Degrees	3,500	3,569	3,361	3,621	3,535
Master's Degrees	695	727	652	813	785
Doctorates	208	251	230	252	262
College of Agriculture & Natural Resources					
Associate's Degrees	1	2	1	0	1
Bachelor's Degrees	162	153	142	160	161
Master's Degrees	57	48	46	52	56
Doctorates	9	5	1	15	7
College of Arts & Sciences¹					
Associate's Degrees	187	178	244	242	289
Bachelor's Degrees	1,586	1,564	1,443	1,533	1,510
Master's Degrees	194	175	140	208	191
Doctorates	100	127	82	96	80
Alfred Lerner College of Business & Economics²					
Bachelor's Degrees	557	766	729	820	756
Master's Degrees	164	191	172	240	236
Doctorates	2	7	2	10	4
College of Earth, Ocean, & Environment³					
Bachelor's Degrees	8	9	35	33	46
Master's Degrees	10	10	11	11	23
Doctorates	6	18	14	9	17
College of Education & Human Development					
Associate's Degrees	0	15	9	10	13
Bachelor's Degrees	547	410	345	260	247
Master's Degrees	174	183	171	141	124
Doctorates	43	39	43	30	30
College of Engineering⁴					
Bachelor's Degrees	238	231	224	334	335
Master's Degrees	60	63	66	112	101
Doctorates	48	49	52	63	81
College of Health Sciences⁵					
Bachelor's Degrees	402	436	443	481	480
Master's Degrees	36	57	46	49	54
Doctorates	0	6	36	29	43

¹ The Fashion and Apparel Studies Department and the School of Public Policy and Administration moved to the College of Arts and Sciences in 2010.

² The Hotel, Restaurant & Institutional Management Department and the Sport Management/Sport Management Interest Program moved to the Alfred Lerner College of Business and Economics in 2008 and 2010, respectively.

³ The Geography Department moved to the College of Earth, Ocean, & Environment in 2009.

⁴ The Computer Science Department and the Energy and Environmental Policy Program moved to the College of Engineering in 2010.

⁵ The Physical Therapy Department moved to the College of Health Sciences in 2009.

Note: Graduation terms defined by federal IPEDS standards (July 1 through June 30).

EMPLOYMENT AND EDUCATIONAL STATUS OF BACCALAUREATES BY CURRICULUM GROUP CLASS OF 2011

Curriculum Group	Number in Class ¹	Number Who Received Survey ²	Number of Respondents ³		Full-Time Employment %	Part-Time Employment %	Pursuing Further Education %	Still Seeking Employment %
			n	%				
Agriculture & Natural Resources	160	160	42	26.3	52.4	9.5	33.3	4.8
Arts & Sciences								
Humanities	380	380	89	23.4	59.6	15.7	16.9	3.4
Social Sciences	876	876	162	18.5	59.3	8.0	27.2	5.6
Life & Health Sciences	171	171	41	24.0	43.9	7.3	41.5	2.4
Physical Sciences	106	106	28	26.4	32.1	7.1	53.6	7.1
Business & Economics	820	820	303	37.0	83.2	5.6	8.3	2.0
Earth, Ocean, & Environment	33	33	9	27.3	33.3	11.1	55.6	--
Education & Human Development	260	260	113	43.5	59.3	15.0	23.0	0.9
Engineering	334	334	219	65.6	59.8	5.5	31.5	0.5
Health Sciences	481	481	201	41.8	53.7	10.0	29.9	0.5
2011 University Total⁴	3,621	3,621	1,207	33.3	62.9	8.5	24.0	2.2

¹ The number in class is based on expected graduates from IPEDS degree completions data.

² Beginning with the 2010 Career Plans Survey, postcards were sent for the fall follow-up mailings; non-deliverable postcards were not received.

³ The number of respondents includes only baccalaureate respondents with valid data on Career Plans Survey, question A for the reported responses on this table.

⁴ Twenty (1.7%) of the 1,207 respondents indicated they are not seeking work in 2011.

Note: Percentages may not total to 100.0 because of rounding.

Source: Data obtained through the Career Services Center and the Office of Institutional Research Career Plans Survey

**EMPLOYEES BY ETHNICITY AND
IPEDS OCCUPATIONAL CATEGORY
Fall 2012**

IPEDS Occupational Category		2012
Management Occupations	Full-Time - Total	476
	White	414
	African-American	40
	Hispanic	2
	Asian	11
	Native American	4
	Two or More Races	2
	Unknown	3
	Part-Time - Total	12
	White	10
	African-American	1
	Hispanic	0
	Asian	1
	Native American	0
Two or More Races	0	
Unknown	0	
Business and Financial Operations Occupations	Full-Time - Total	286
	White	249
	African-American	25
	Hispanic	3
	Asian	8
	Native American	0
	Two or More Races	1
	Unknown	0
	Part-Time - Total	10
	White	10
	African-American	0
	Hispanic	0
	Asian	0
	Native American	0
Two or More Races	0	
Unknown	0	
Computer, Engineering, and Science Occupations	Full-Time - Total	487
	White	374
	African-American	25
	Hispanic	6
	Asian	73
	Native American	4
	Two or More Races	5
	Unknown	0
	Part-Time - Total	38
	White	30
	African-American	3
	Hispanic	1
	Asian	4
	Native American	0
Two or More Races	0	
Unknown	0	
Community Service, Legal, Arts, and Media Occupations	Full-Time - Total	292
	White	242
	African-American	30
	Hispanic	10
	Asian	5
	Native American	0
	Two or More Races	4
	Unknown	1
	Part-Time - Total	25
	White	24
	African-American	1
	Hispanic	0
	Asian	0
	Native American	0
Two or More Races	0	
Unknown	0	

**EMPLOYEES BY ETHNICITY AND
IPEDS OCCUPATIONAL CATEGORY**
(Continued)

IPEDS Occupational Category		2012
Postsecondary Teachers	Full-Time - Total	1,128
	White	906
	African-American	45
	Hispanic	28
	Asian	135
	Native American	3
	Two or More Races	9
	Unknown	2
	Part-Time - Total	44
	White	32
	African-American	3
	Hispanic	4
	Asian	5
	Native American	0
Two or More Races	0	
Unknown	0	
Librarians, Curators, and Archivists	Full-Time - Total	110
	White	91
	African-American	15
	Hispanic	1
	Asian	2
	Native American	0
	Two or More Races	0
	Unknown	1
	Part-Time - Total	5
	White	3
	African-American	2
	Hispanic	0
	Asian	0
	Native American	0
Two or More Races	0	
Unknown	0	
Other Teaching and Instructional Support Occupations	Full-Time - Total	33
	White	24
	African-American	7
	Hispanic	1
	Asian	1
	Native American	0
	Two or More Races	0
	Unknown	0
	Part-Time - Total	4
	White	3
	African-American	0
	Hispanic	0
	Asian	1
	Native American	0
Two or More Races	0	
Unknown	0	
Healthcare Practitioners and Technical Occupations	Full-Time - Total	34
	White	28
	African-American	5
	Hispanic	0
	Asian	1
	Native American	0
	Two or More Races	0
	Unknown	0
	Part-Time - Total	31
	White	26
	African-American	3
	Hispanic	0
	Asian	1
	Native American	0
Two or More Races	0	
Unknown	1	

**EMPLOYEES BY ETHNICITY AND
IPEDS OCCUPATIONAL CATEGORY**
(Continued)

IPEDS Occupational Category		2012
Service Occupations	Full-Time - Total	323
	White	173
	African-American	105
	Hispanic	22
	Asian	21
	Native American	1
	Two or More Races	1
	Unknown	0
	Part-Time - Total	3
	White	3
	African-American	0
	Hispanic	0
	Asian	0
	Native American	0
Two or More Races	0	
Unknown	0	
Office and Administrative Support Occupations	Full-Time - Total	518
	White	445
	African-American	48
	Hispanic	5
	Asian	8
	Native American	4
	Two or More Races	5
	Unknown	3
	Part-Time - Total	50
	White	44
	African-American	2
	Hispanic	1
	Asian	1
	Native American	0
Two or More Races	1	
Unknown	1	
Natural Resources, Construction, and Maintenance Occupations	Full-Time - Total	181
	White	158
	African-American	15
	Hispanic	5
	Asian	0
	Native American	3
	Two or More Races	0
	Unknown	0
	Part-Time - Total	0
	White	0
	African-American	0
	Hispanic	0
	Asian	0
	Native American	0
Two or More Races	0	
Unknown	0	
Production, Transportation, and Material Moving Occupations	Full-Time - Total	63
	White	49
	African-American	11
	Hispanic	0
	Asian	1
	Native American	1
	Two or More Races	0
	Unknown	1
	Part-Time - Total	2
	White	2
	African-American	0
	Hispanic	0
	Asian	0
	Native American	0
Two or More Races	0	
Unknown	0	

**EMPLOYEES BY ETHNICITY AND
IPEDS OCCUPATIONAL CATEGORY**
(Continued)

IPEDS Occupational Category	2012
ALL EMPLOYEES	
Full-Time - Total	3,931
White	3,153
African-American	371
Hispanic	83
Asian	266
Native American	20
Two or More Races	27
Unknown	11
Part-Time - Total	224
White	187
African-American	15
Hispanic	6
Asian	13
Native American	0
Two or More Races	1
Unknown	2
TOTAL	4,155

Note: In Fall 2012 employee categories changed as required by Federal IPEDS reporting standards.

Source: Office of Institutional Research/UDEW

FULL-TIME EMPLOYEES BY GENDER
Fall 2008 Through Fall 2012

	2008	2009	2010	2011	2012
Faculty	1,117	1,111	1,126	1,131	1,128
Female	431	437	438	449	447
Male	686	674	688	682	681
Exempt Employees (Includes Chairpersons)	1,354	1,403	1,469	1,543	1,600
Female	717	752	803	864	890
Male	637	651	666	679	710
Non-Exempt/Hourly Employees	1,337	1,332	1,303	1,267	1,203
Female	844	834	803	772	731
Male	493	498	500	495	472
TOTAL	3,808	3,846	3,898	3,941	3,931
Female	1,992	2,023	2,044	2,085	2,068
Male	1,816	1,823	1,854	1,856	1,863

Source: Office of Institutional Research/UDEW

**NUMBER OF FACULTY BY RANK AND TENURE STATUS
Fall 2008 Through Fall 2012**

	2008			2009			2010			2011			2012		
	Tenured/ Track	Non- Tenure Track	Total	Tenured/ Track	Non- Tenure Track	Total	Tenured/ Track	Non- Tenure Track	Total	Tenured/ Track	Non- Tenure Track	Total	Tenured/ Track	Non- Tenure Track	Total
Full-Time															
Professor	370	12	382	368	11	379	367	12	379	386	9	395	378	7	385
Associate Professor	301	27	328	310	32	342	312	38	350	293	41	334	305	44	349
Assistant Professor	180	122	302	162	124	286	162	128	290	179	121	300	172	125	297
Instructor	0	105	105	0	104	104	0	107	107	0	102	102	0	97	97
Lecturer	0	0	0	0	0	0	0	0	0	0	0	0	0	0	0
Total Full-Time Faculty	851	266	1,117	840	271	1,111	841	285	1,126	858	273	1,131	855	273	1,128
Total Part-Time Faculty	6	30	36	3	41	44	4	37	41	2	39	41	3	41	44
Grand Total	857	296	1,153	843	312	1,155	845	322	1,167	860	312	1,172	858	314	1,172

Note: Data include regular faculty (active or on sabbatical leave) at the Newark Campus and the Associate in Arts Program. Visiting faculty are excluded.

Source: Office of Institutional Research/UDEW

TENURE STATUS AMONG FULL-TIME TENURE TRACK FACULTY
Fall 2008 Through Fall 2012

	2008		2009		2010		2011		2012	
	Tenured/ Eligible	% Tenured	Tenured/ Eligible	% Tenured	Tenured/ Eligible	% Tenured	Tenured/ Eligible	% Tenured	Tenured/ Eligible	% Tenured
Professor	370/370	100.0	368/368	100.0	367/367	100.0	386/386	100.0	378/378	100.0
Associate Professor	298/301	99.0	308/310	99.4	307/312	98.4	286/293	97.6	301/305	98.7
Assistant Professor	0/180	0.0	0/162	0.0	0/162	0.0	0/179	0.0	0/172	0.0
Total	668/851	78.5	676/840	80.5	674/841	80.1	672/858	78.3	679/855	79.4

*Key: % Tenured = # Tenured/# Eligible * 100. University policy is to grant tenure at time of promotion to Associate Professor.*

If promotion is not achieved, faculty member is terminated, so there are no tenured faculty at the Assistant Professor level.

Note: Counts include regular faculty (active or on sabbatical leave) on the Newark campus and the Associate in Arts Program. Visiting faculty are excluded.

Source: Office of Institutional Research/UDEW

AVERAGE TOTAL COMPENSATION OF FULL-TIME FACULTY BY RANK
Academic Year 2008-09 Through 2012-13

	2008-09	2009-10	2010-11	2011-12	2012-13
	Average Comp. \$	Average Comp. \$	Average Comp. \$	Average Comp. \$	Average Comp. \$
	Increase From Previous Year %	Increase From Previous Year %	Increase From Previous Year %	Increase From Previous Year %	Increase From Previous Year %
Professor	165,800	171,414	175,694	180,935	186,212
Associate Professor	116,423	120,879	122,973	127,339	129,548
Assistant Professor	99,072	101,362	104,904	109,501	109,659
Instructor	80,266	83,774	85,992	90,956	92,085
	3.1	3.4	2.5	3.0	2.9
	3.2	3.8	1.7	3.6	1.7
	6.2	2.3	3.5	4.4	0.1
	4.5	4.4	2.6	5.8	1.2

Note: Includes regular full-time faculty and chairpersons.

Total compensation refers to 9-month equivalent salary plus fringe benefits.

Source: Office of Institutional Research/UDEW/
AAUP Annual Survey of Faculty Compensation

**FULL-TIME EMPLOYEES' SALARY
PRINCIPAL SOURCE OF FUNDING**
Fall 2008 Through Fall 2012

	2008	2009	2010	2011	2012
Faculty	1,117	1,111	1,126	1,131	1,128
Paid Principally from Unrestricted Funds	1,062	1,061	1,075	1,114	1,116
% of Total	95.1%	95.5%	95.5%	98.5%	98.9%
Exempt Employees (Includes Chairpersons)	1,354	1,403	1,469	1,543	1,600
Paid Principally from Unrestricted Funds	1,196	1,218	1,279	1,320	1,356
% of Total	88.3%	86.8%	87.1%	85.5%	84.8%
Non-Exempt/Hourly Employees	1,337	1,332	1,303	1,267	1,203
Paid Principally from Unrestricted Funds	1,254	1,264	1,232	1,185	1,134
% of Total	93.8%	94.9%	94.5%	93.5%	94.3%
TOTAL	3,808	3,846	3,898	3,941	3,931
Paid Principally from Unrestricted Funds	3,512	3,543	3,586	3,619	3,606
% of Total	92.2%	92.1%	92.0%	91.8%	91.7%

Note: Unrestricted funds represent basic, allocated, and self supporting fund types.

Source: Office of Institutional Research/UDEW

STATEMENT OF OPERATING ACTIVITIES
FY 08 Through FY 12
(Thousands of Dollars)

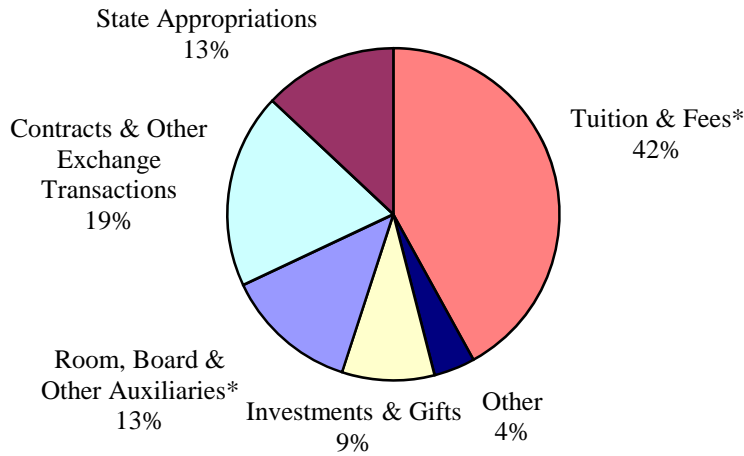
	FY 08	FY 09	FY 10	FY 11	FY 12
	\$	\$	\$	\$	\$
OPERATING REVENUE:					
Tuition and fees, net of scholarship & fellowship allowance ⁽¹⁾	235,398	260,897	296,648	322,634	354,844
State operating appropriations	127,166	126,744	117,873	116,152	112,427
Contracts & other exchange transactions	136,432	135,371	165,951	175,151	165,692
Room, board & other auxiliaries, net of scholarship & fellowship allowance ⁽¹⁾	88,072	92,929	99,519	101,902	110,657
Investments and gifts	83,526	84,333	73,020	69,052	75,945
Other	21,792	28,207	25,390	25,196	31,420
Total operating revenues and support	692,386	728,481	778,401	810,087	850,985
<i>⁽¹⁾ Scholarship and fellowship allowance</i>	67,896	71,976	88,405	98,379	107,299
OPERATING EXPENSES AND TRANSFERS:					
Instruction & academic support	350,736	364,465	373,902	400,701	404,986
Sponsored activities	150,691	154,677	166,845	173,712	181,859
Student services	24,392	26,251	27,494	28,002	28,821
Student aid	5,722	5,827	4,805	5,475	5,884
Institutional	60,451	63,946	69,465	74,205	82,114
Room, board & other auxiliaries	82,999	86,938	94,955	93,981	95,633
Transfers & other	17,395	26,377	40,935	34,011	51,688
Total operating expenses and transfers	692,386	728,481	778,401	810,087	850,985

Source: Assistant Vice President, University Finance

OPERATING REVENUE, EXPENSES AND TRANSFERS

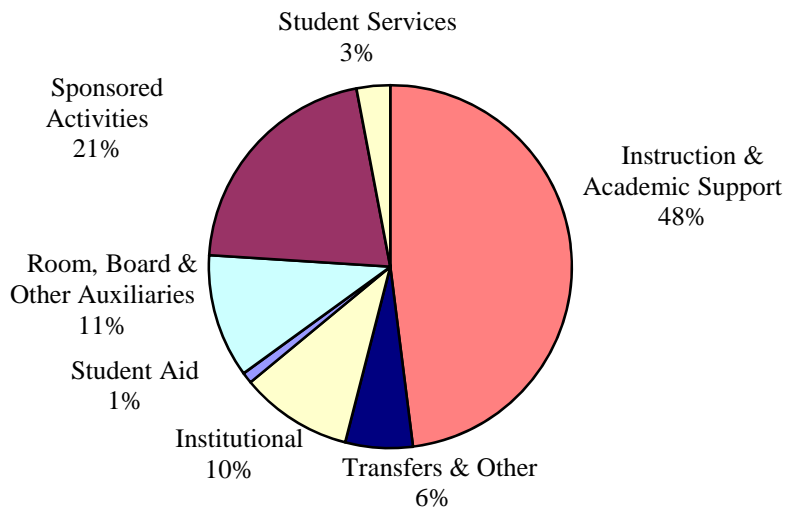
Fiscal Year 2012

REVENUE (\$851.0 millions)



* Net of Scholarship & Fellowship Allowance

EXPENSES AND TRANSFERS (\$851.0 millions)



Source: Assistant Vice President, University Finance

CHANGE IN NET ASSETS
FY 08 Through FY 12
(Thousands of Dollars)

	FY 08	FY 09	FY 10	FY 11	FY 12
	\$	\$	\$	\$	\$
Net assets at beginning of year	2,000,209	1,934,074	1,614,737	1,719,640	2,002,982
Change in net assets:					
Operating transfers	18,797	27,601	41,565	32,828	51,009
Nonoperating activities:					
Net realized and unrealized gains (losses)	(89,844)	(328,939)	73,311	234,772	(120,904)
Contributions for endowment and buildings	8,985	8,308	22,107	19,420	38,740
State capital appropriations	3,500	-	900	1,066	3,889
Net change in asset retirement obligation liability	(2,972)	(1,256)	606	6,226	38
Net endowment income and other	(4,601)	(25,051)	(33,586)	(10,970)	(23,864)
Total nonoperating activities	<u>(84,932)</u>	<u>(346,938)</u>	<u>63,338</u>	<u>250,514</u>	<u>(102,101)</u>
Net assets at end of year	<u>1,934,074</u>	<u>1,614,737</u>	<u>1,719,640</u>	<u>2,002,982</u>	<u>1,951,890</u>
Percent change from prior year	-3%	-17%	6%	16%	-3%
Net assets:					
Unrestricted	1,031,166	910,676	958,025	1,117,093	1,086,775
Temporarily restricted	593,322	410,205	454,692	566,294	533,671
Permanently restricted	<u>309,586</u>	<u>293,856</u>	<u>306,923</u>	<u>319,595</u>	<u>331,444</u>
Total net assets	<u>1,934,074</u>	<u>1,614,737</u>	<u>1,719,640</u>	<u>2,002,982</u>	<u>1,951,890</u>
Endowment and funds invested as endowment:					
Market value	1,340,100	1,008,400	1,091,700	1,138,200	1,209,906
Percent change from prior year	-4%	-25%	8%	4%	6%

Source: Assistant Vice President, University Finance

EXTERNALLY SPONSORED ACTIVITIES
(Thousands of Dollars)

College / Unit	FY 2012				FY 2011 Total \$	Percent Change %
	Instruction & Dept. Rsch. \$	Sponsored Research \$	Public Service \$	Total \$		
EXTERNALLY SPONSORED ACTIVITIES:						
Agriculture & Natural Resources	2,145	16,123	7,797	26,065	22,871	14.0
Arts & Sciences	8,396	26,923	6,016	41,335	46,480	(11.1)
Business & Economics	3,899	1,480	936	6,315	5,777	9.3
Earth, Ocean, & Environment	415	13,544	735	14,694	16,393	(10.4)
Education & Human Development	4,012	6,011	12,708	22,731	22,254	2.1
Engineering	5,178	50,128	848	56,154	55,668	0.9
Health Sciences	1,459	8,621	299	10,379	8,770	18.3
Institute for Global Studies	576	58	495	1,129	1,123	0.5
Delaware Biotechnology Institute	516	5,174	18	5,708	7,066	(19.2)
Institute of Energy Conversion	32	3,218	0	3,250	3,024	7.5
Delaware Environmental Institute	0	2,259	561	2,820	1,208	133.4
Other	2,949	1,254	453	4,656	5,737	(18.8)
TOTAL EXTERNALLY SPONSORED ACTIVITIES	29,577	134,793	30,866	195,236	196,371	(0.6)

Note: Excludes funding for building/renovation.

Source: Assistant Vice President, University Finance

**UNDERGRADUATE TUITION, FEES,
ROOM AND BOARD CHARGES PER YEAR
AND THEIR ANNUAL RATE OF INCREASE
2002-03 Through 2012-13**

Year	TUITION AND FEES ¹			BOARD ²		TRADITIONAL DOUBLE ROOM		
	Resident		Nonresident		\$	%	\$	%
	\$	Incr. %	\$	Incr. %				
02-03 ³	5,760	8.9	15,290	6.3	2,590	4.9	3,232	5.5
03-04	6,498	12.8	16,028	4.8	2,690	3.9	3,428	6.1
04-05	6,954	7.0	16,640	3.8	2,790	3.7	3,668	7.0
05-06	7,318	5.2	17,474	5.0	2,900	3.9	3,924	7.0
06-07	7,740	5.8	18,450	5.6	3,030	4.5	4,336	10.5
07-08	8,150	5.3	19,400	5.1	3,200	5.6	4,748	9.5
08-09	8,646	6.1	21,126	8.9	3,350	4.7	5,128	8.0
09-10	9,486	9.7	23,186	9.8	3,600	7.5	5,466	6.6
10-11	10,208	7.6	25,408	9.6	3,810	5.8	5,826	6.6
11-12	11,192	9.6	27,462	8.1	4,020	5.5	6,176	6.0
12-13	11,682	4.4	28,772	4.8	4,242	5.5	6,516	5.5

¹ Fall 2012 fees include: Health Service - \$504; Student Center - \$238; and Comprehensive Fee - \$790.

² The board charge reflects the largest number of meals available (19 per week).

³ 2002-03 tuition includes a \$120 mid-year increase for the Spring semester.

Source: Office of Institutional Research

**UNDERGRADUATE STUDENT CHARGES
AT THE UNIVERSITY OF DELAWARE
AND ADMISSIONS COMPETITORS**

	TUITION & FEES									
	Resident					Nonresident				
	08-09	09-10	10-11	11-12	12-13	08-09	09-10	10-11	11-12	12-13
Univ. of Delaware	8,646	9,486	10,208	11,192	11,682	21,126	23,186	25,408	27,462	28,772
James Madison Univ.	6,964	7,244	7,860	8,448	8,808	18,458	19,016	20,114	21,228	22,796
Penn State Univ.	13,706	14,416	15,250	15,984	16,444	24,940	25,946	27,114	28,066	28,746
Rutgers Univ.	11,540	11,886	12,581	12,755	13,073	21,488	22,518	24,043	25,417	26,393
Univ. of Maryland	8,005	8,053	8,416	8,655	8,908	23,076	23,989	24,831	26,026	27,287
Univ. of Virginia	9,490	9,862	10,828	11,786	12,216	29,572	31,420	33,102	36,108	38,228
Va. Polytech. Inst.	8,198	8,605	9,459	10,509	10,923	20,655	21,488	22,648	23,911	25,915

	ROOM & BOARD									
	Resident					Nonresident				
	08-09	09-10	10-11	11-12	12-13	08-09	09-10	10-11	11-12	12-13
Univ. of Delaware	8,478	9,066	9,636	10,196	10,758	8,478	9,066	9,636	10,196	10,758
James Madison Univ.	7,458	7,690	8,020	8,340	8,630	7,458	7,690	8,020	8,340	8,630
Penn State Univ.	8,270	8,790	9,030	9,420	9,690	8,270	8,790	9,030	9,420	9,690
Rutgers Univ.	10,232	10,676	11,216	11,262	11,742	10,232	10,676	11,216	11,262	11,742
Univ. of Maryland	9,109	9,377	9,599	9,742	9,893	9,109	9,377	9,599	9,742	9,893
Univ. of Virginia	7,820	8,290	8,652	8,866	9,419	7,820	8,290	8,652	8,866	9,419
Va. Polytech. Inst.	5,476	5,824	6,290	6,856	7,254	5,476	5,824	6,290	6,856	7,254

	TOTAL INSTITUTIONAL COSTS									
	Resident					Nonresident				
	08-09	09-10	10-11	11-12	12-13	08-09	09-10	10-11	11-12	12-13
Univ. of Delaware	17,124	18,552	19,844	21,388	22,440	29,604	32,252	35,044	37,658	39,530
James Madison Univ.	14,422	14,934	15,880	16,788	17,438	25,916	26,706	28,134	29,568	31,426
Penn State Univ.	21,976	23,206	24,280	25,404	26,134	33,210	34,736	36,144	37,486	38,436
Rutgers Univ.	21,772	22,562	23,797	24,017	24,815	31,720	33,194	35,259	36,679	38,135
Univ. of Maryland	17,114	17,430	18,015	18,397	18,801	32,185	33,366	34,430	35,768	37,180
Univ. of Virginia	17,310	18,152	19,480	20,652	21,635	37,392	39,710	41,754	44,974	47,647
Va. Polytech. Inst.	13,674	14,429	15,749	17,365	18,177	26,131	27,312	28,938	30,767	33,169

Source: Data obtained through the Office of Institutional Research Survey of Undergraduate Charges

BUILDING INVENTORY

	Newark	All Sites
Academic		
Major Classrooms & Laboratories	48	54
Farm/Auxiliary	85	130
Other Special Use	33	39
Physical Education	7	7
Total Academic	173	230
Student Residence and Service		
Residence Halls (Major Residence Hall complexes = 11)	40	44
Other Housing	63	92
Dining Halls	5	5
Student Activities	18	18
Total Student Residence & Service	126	159
Administrative		
General Services	18	22
Plant Operations & Services	19	22
Total Administrative	37	44
TOTAL BUILDINGS	336	433

Source: General Accounting
(Data as of September 1, 2012)

LAND INVENTORY

ACREAGE OWNED	
New Castle County	
Newark Campus Total	970
Wilmington	34
Other	138
Total New Castle County¹	1,142
Kent County	
Dover	5
Clayton	297
Total Kent County	302
Sussex County	
Georgetown Substation	347
Rehoboth	141
Lewes	69
Indian River	10
Total Sussex County	567
TOTAL ACREAGE¹	2,011

¹ Exclusive of the 272 acres owned by 1743 Holdings, LLC for the former Chrysler Site.

Source: General Accounting
(Data as of September 1, 2012)

UNIVERSITY LIBRARY

Facilities and Services

The University of Delaware Library includes the Morris Library, where the main collection is housed, three branch libraries located in Newark, the Agriculture Library, the Chemistry Library, and the Physics Library and a fourth branch library, the Marine Studies Library in Lewes, Delaware.

The collections of the Library parallel the University's academic interests and support all disciplines. Books, periodicals, E-books, E-journals, E-newspapers, databases, microforms, government publications, maps, manuscripts, media, software and Internet access provide a major academic resource for the University of Delaware, the surrounding community, the State of Delaware and the nation.

The Library is a depository library for U.S. government publications, a patent depository for U.S. patents and a repository for State of Delaware publications. Library staff members provide a wide range of services including reference assistance, circulation, interlibrary loan, instructional programs, assistance to users with disabilities and assistance to faculty, staff and students in the Student Multimedia Design Center.

The Morris Library, the main library where the main collection is housed, seats over 2,500 persons. The Library is a member of the Association of Research Libraries, the Center for Research Libraries, CIRLA (the Chesapeake Information and Research Library Alliance), the Digital Library Federation, the HathiTrust, LYRASIS, Portico, the National Network of Libraries of Medicine, the Center for Intellectual Property and the OCLC (the Online Computer Library Center), including the OCLC Research Library Partnership.

For Library hours, call 302-831-BOOK or check the Library Website at:
www.udel.edu/library

Size of Collections (2011/2012)

Books and bound periodicals.....	over 2,800,000
E-books (subset of above)	over 390,000
Microforms	over 3,400,000
Databases (titles in Databases list)	over 360
Electronic and print journals including newspapers to which the Library provides access	over 42,000
E-journals and E-newspapers (subset of above)	36,000
Other resources (DVDs, maps, etc.)	over 510,000
Linear feet of manuscripts and archives	over 6,700
Research Guides to the Internet	over 190

Use Statistics (2011/2012)

Items checked out.....	over 340,000
Items used in the building.....	over 88,000
Individuals entering the Morris Library.....	over 810,000
Virtual visits on Library Website.....	over 1,600,000
Page views on Library Website.....	over 4,000,000
User education provided to individuals.....	over 9,400

Electronic Library Resources

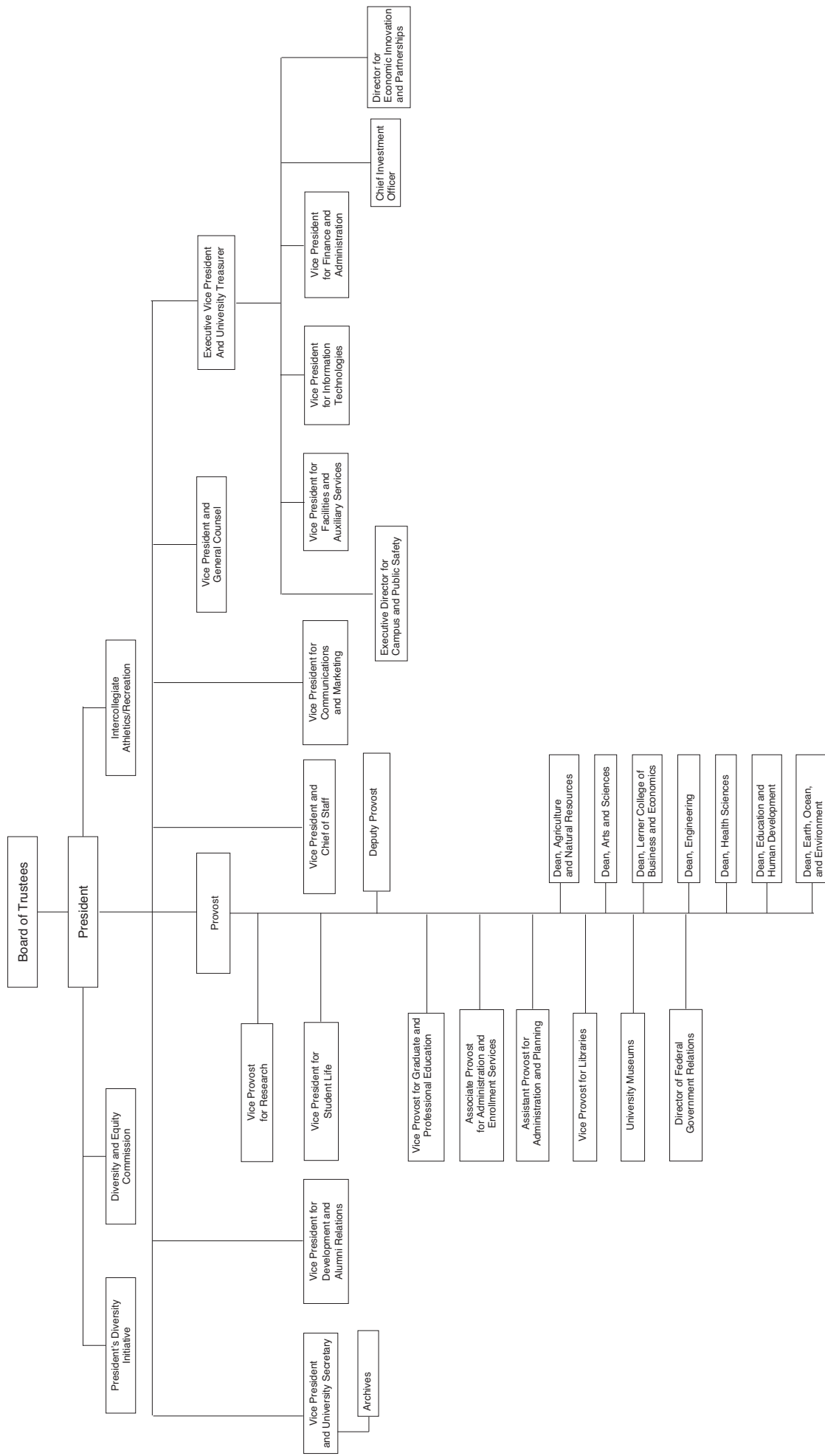
The University of Delaware Library provides online electronic access to networked and digital information including thousands of electronic journals; journal article references and abstracts; full-text electronic articles; a full-text encyclopedia; government information; maps and many other items. Databases provide access to more than 360 networked databases for University of Delaware faculty, students, and staff. The Library Website is accessible 24/7 at www.udel.edu/library.

DELICAT is the University of Delaware Library online catalog and contains information about the library collection and also provides links to electronic journals and other resources. DELICAT may be accessed from anywhere in the world via the web.

The Library Website serves as a gateway research tool and provides gateway access to electronic resources on the web including electronic access to resources that are locally licensed for University of Delaware faculty, students and staff only. The Library Website is also available from the University of Delaware Website www.udel.edu.

The University of Delaware Library was one of the first libraries in the nation to implement WorldCat Local, the world's largest network of library-based content and services. WorldCat Local encompasses the holdings of over 72,000 libraries across the world, including the University of Delaware Library. In a single search, users can easily identify a broad array of high-quality research materials. With a simple click, users can change the default interface to German, Spanish, French, Dutch or Chinese. WorldCat Local has been enthusiastically received by students.

The Morris Library provides seating for more than 2,500 persons; wireless access in most areas; special purpose space for computer-based systems; more than 275 computer workstations accessible to users; more than 200 laptop connections for University of Delaware users to connect personal laptops (including all graduate student carrels); the Student Multimedia Design Center; a current periodical reading room; self-service photocopiers; microform reader/printers including a digital microform workstation; a large reserve reading room; small research studies for which faculty may request use; a GIS workstation; special equipment and areas to assist users with disabilities; a media area and viewing room; small group study rooms for student use; a handsome Special Collections area including an exhibition gallery and a reading room with a controlled environmental system for rare materials; and many other areas and services.



UNIVERSITY OF DELAWARE REGIONAL, NATIONAL AND SPECIALIZED ACCREDITORS

Accreditation Board for Engineering and Technology
Accreditation Association for Ambulatory Health Care, Inc.
Administration on Developmental Disabilities
American Association of Health Education
American Association of School Librarians
American Chemical Society's Committee on Professional Training
American Council on the Teaching of Foreign Languages
American Library Association
American Physical Therapy Association
American Psychological Association
Association for Childhood Education International
Association for Educational Communications and Technology
Association of Small Business Development Centers
Association of University Centers on Disabilities
Association to Advance Collegiate Schools of Business International
Commission on Accreditation of Physical Therapy Education
Commission on Collegiate Nursing Education
Commission on English Language Program Accreditation
Commission on the Accreditation of Athletic Training Education Programs
Commission on the Accreditation for Dietetics Education (CADE)
Council for Exceptional Children

Council for Standards for Human Services Education
Educational Leadership Constituent Council
Engineering Accreditation Commission of Accreditation Board for Engineering and Technology
Institute of Food Technologists
International Association of Counseling Services, Inc.
International Reading Association
Middle States Commission on Higher Education
National Accrediting Agency for Clinical Laboratory Sciences
National Association for Sport and Physical Education
National Association for the Education of Young Children
National Association of School Psychologists
National Association of Schools of Music
National Association of Schools of Public Affairs and Administration
National Council for Accreditation of Teacher Education
National Council for the Social Studies
National Council of Teachers of English
National Council of Teachers of Mathematics
National Science Teachers Association
Psychological Clinical Science Accreditation System (PCSAS)
Teachers of English to Speakers of Other Languages, Inc.
Technology Accreditation Commission of Accreditation Board for Engineering and Technology

Notice of Non-Discrimination, Equal Opportunity and Affirmative Action

The University of Delaware does not discriminate on the basis of race, color, national origin, sex, disability, religion, age, veteran status, gender identity or expression, or sexual orientation in its programs and activities as required by Title IX of the Educational Amendments of 1972, the Americans with Disabilities Act of 1990, Section 504 of the Rehabilitation Act of 1973, Title VII of the Civil Rights Act of 1964, and other applicable statutes and University policies. The University of Delaware prohibits sexual harassment, including sexual violence. The following person has been designated to handle inquiries regarding the Americans with Disabilities Act, the Rehabilitation Act, and related statutes and regulations: Tom Webb, Director, Office of Disabilities Support Services, 240 Academy Street, Alison Hall Suite 119, University of Delaware, Newark, DE 19716, 302-831-4643. The following person has been designated to handle inquiries regarding the non-discrimination policies and to serve as the overall campus coordinator for purposes of Title IX compliance: Bindu Kolli, Chief Policy Advisor, Office of Equity and Inclusion, 305 Hullahen Hall, University of Delaware, Newark, DE 19716, 302-831-8063. The following individuals have been designated as deputy Title IX coordinators: for Athletics, Jennifer W. Davis, Vice President for Finance and Administration, 220 Hullahen Hall, University of Delaware, Newark, DE 19716, 302-831-2769; and for Student Life, Dawn Thompson, Dean of Students/AVP for Student Life, 101 Hullahen Hall, University of Delaware, Newark, DE 19716, 302-831-8939. Inquiries concerning the application of anti-discrimination laws may be referred to the Title IX coordinators or to the Office for Civil Rights, United States Department of Education. For further information on notice of nondiscrimination, visit <http://wdcrobcolp01.ed.gov/CFAPPS/OCR/contactus.cfm> for the address and phone number of the U.S. Department of Education office that serves your area, or call 1-800-421-3481.