



East Coast Classic



Smart Money



Idea Leadership



Discovery Learning



Talent Magnet



Citizen University

OFFICE OF INSTITUTIONAL RESEARCH

2010-2011

# FACTS & FIGURES



## ***FACTS & FIGURES***

***2010 – 2011***

### **Office of Institutional Research**

**Michael F. Middaugh**

*Associate Provost for Institutional Effectiveness*

[middaugh@udel.edu](mailto:middaugh@udel.edu)

**Heather A. Kelly**

*Director*

[hkelly@udel.edu](mailto:hkelly@udel.edu)

**Allison M. Walters**

*Assistant Director*

[awalters@udel.edu](mailto:awalters@udel.edu)

**Kathleen F. Collison**

*Data Warehouse Manager*

[katc@udel.edu](mailto:katc@udel.edu)

**Denise M. Lindsey**

*Institutional Research Analyst*

[dlindsey@udel.edu](mailto:dlindsey@udel.edu)

**Lynne R. Govatos**

*Institutional Research Analyst*

[lgovatos@udel.edu](mailto:lgovatos@udel.edu)

**Qin Zhang**

*Institutional Research Analyst*

[qzhang@udel.edu](mailto:qzhang@udel.edu)

**Patricia E. Kelly**

*Records Technician*

[pek@udel.edu](mailto:pek@udel.edu)

**Telephone: (302) 831-2021      Fax: (302) 831-8530**

**E-mail: [irp@udel.edu](mailto:irp@udel.edu)**

**Institutional Research Homepage on the Internet: <http://www.udel.edu/IR/>**

**UD Homepage on the Internet: <http://www.udel.edu/>**

# MEMBERS OF THE BOARD OF TRUSTEES

## *As of September 2010*

### **Ex-Officio Members**

Jack Markell, *Governor of the State of Delaware*  
Teri Quinn Gray, *President of the State Board of Education*  
William H. Narvel, Jr., *Master of the State Grange*  
Patrick T. Harker, *President of the University*

### **Officers of the Board**

A. Gilchrist Sparks III, *Chairman*  
John R. Cochran, *Vice Chair*  
Mary Jane Willis, *Vice Chair*  
Carey M. Koppenhaver, *Secretary-Treasurer*

### **Elected and Appointed Members**

Tony Allen	Teagan J. Gregory
James C. Borel	Terri Kelly
Thomas J. Burns	Dennis E. Klima
Irwin G. Burton III	Cynthia Primo Martin
R.R.M. Carpenter III	Christopher H. Schell
Allison B. Castellanos	Everett C. Toomey
William B. Chandler III	H. Wesley Towers, Jr.
Howard E. Cosgrove	P. Coleman Townsend, Jr.
Patricia A. DeLeon	Sherman L. Townsend
Robert A. Fischer, Jr.	John E. Wallace, Jr.
T. Henley Graves	Kenneth C. Whitney
Scott A. Green	

### **Honorary Counselor**

Andrew B. Kirkpatrick, Jr.

### **Trustees *Emeriti***

Werner C. Brown	Sally H. Higgins
Robert W. Gore	Robert F. Rider

## **ADMINISTRATIVE LEADERS**

PATRICK T. HARKER, President of the University

TOM APPLE, Provost

SCOTT R. DOUGLASS, Executive Vice President and University Treasurer

MARGARET L. ANDERSEN, Interim Deputy Provost

MARK A. BARTEAU, Senior Vice Provost for Research and Strategic Initiatives

DAVID L. BROND, Vice President for Communications and Marketing

JENNIFER W. DAVIS, Vice President for Finance and Administration

MICHAEL A. GILBERT, Vice President for Student Life

PIERRE D. HAYWARD, Vice President and University Secretary

CARL JACOBSON, Vice President for Information Technologies

BERNARD MUIR, Director of Athletics and Recreation Services

DAVID SINGLETON, Vice President for Facilities and Auxiliary Services

MONICA M. TAYLOR, Vice President for Development and Alumni Relations

LAWRENCE WHITE, Vice President and General Counsel

PATRICIA PLUMMER WILSON, Vice President and Chief of Staff

## **COLLEGE ADMINISTRATION**

ROBIN MORGAN, Dean, College of Agriculture and Natural Resources

GEORGE WATSON, Dean, College of Arts and Sciences

CONRADO M. GEMPESAW, Dean, Alfred Lerner College of Business and Economics

NANCY TARGETT, Dean, College of Earth, Ocean, and Environment

NANCY BRICKHOUSE, Interim Dean, College of Education and Human Development

MICHAEL CHAJES, Dean, College of Engineering

KATHLEEN MATT, Dean, College of Health Sciences

# 2010-11 FACTS & FIGURES

## Table of Contents

	<u>Page No.</u>
<b>Mission and Vision</b> .....	1
<b>At A Glance</b> .....	3
<b>Synopsis of Undergraduate Degree Programs and Majors</b> .....	5
<b>Synopsis of Graduate Degree Programs</b> .....	7
<b>Twenty-Five Most Popular Undergraduate Majors</b> .....	9
<b>Students</b>	
Average SAT Scores By Residence for First-Time Freshmen .....	10
First-Time Freshman Admissions Activity.....	11
Distribution of Completed Admissions Applications and Accepted Offers .....	12
- Completed Applications and Offers Accepted (figure) .....	12
Enrollment By College or Division and Time Status .....	13
- Trends in Total Enrollment (figure).....	16
Ethnicity of Students By Time Status.....	17
Undergraduate Enrollment By Gender .....	19
Graduate Enrollment By Gender .....	20
Enrollment By Residence Status.....	21
Retention Rates .....	23
Graduation Rates.....	24
Degrees Granted By College and Level.....	25
Employment and Educational Status of Baccalaureates .....	26
<b>Personnel</b>	
Employees By Ethnicity and EEO Category .....	27
Full-Time Employees By Gender .....	30
Number of Faculty By Rank and Tenure Status .....	31
Tenure Status Among Full-Time Tenure Track Faculty.....	32
Average Total Compensation of Full-Time Faculty .....	33
Full-Time Employees' Salary Principal Source of Funding .....	34

# Table of Contents, continued

	<u>Page No.</u>
<b>Finances</b>	
Statement of Operating Activities.....	35
Operating Revenue, Expenses and Transfers (figure) .....	36
Change in Net Assets .....	37
Externally Sponsored Activities .....	38
Undergraduate Tuition, Fees, Room and Board Charges .....	39
Undergraduate Student Charges at Delaware and Admissions Competitors.....	40
<b>Facilities</b>	
Building Inventory .....	41
Land Inventory.....	42
University Library.....	43
<b>University of Delaware Administrative Organizational Chart</b>	
<b>University of Delaware Regional, National and Specialized Accreditors</b>	



## **MISSION AND VISION**

### **MISSION STATEMENT**

The University of Delaware exists to cultivate learning, develop knowledge, and foster the free exchange of ideas. State-assisted yet privately governed, the University has a strong tradition of distinguished scholarship, research, teaching, and service that is grounded in a commitment to increasing and disseminating scientific, humanistic, and social knowledge for the benefit of the larger society. Founded in 1743 and chartered by the state in 1833, the University of Delaware today is a land-grant, sea-grant, and space-grant university.

The University of Delaware is a major research university with extensive graduate programs that is also dedicated to outstanding undergraduate and professional education. University faculty are committed to the intellectual, cultural, and ethical development of students as citizens, scholars, and professionals. University graduates are prepared to contribute to a global society that requires leaders with creativity, integrity, and a dedication to service.

The University of Delaware promotes an environment in which all people are inspired to learn, and encourages intellectual curiosity, critical thinking, free inquiry, and respect for the views and values of an increasingly diverse population.

An institution engaged in addressing the critical needs of the state, nation, and global community, the University of Delaware carries out its mission with the support of alumni who span the globe and in partnership with public, private, and nonprofit institutions in Delaware and beyond.

### **GUIDING PRINCIPLES**

The University of Delaware's strategic plan was adopted in May 2008 and defines the aspirations and initiatives that will advance the University on a Path to Prominence™. The following five guiding principles identify UD's core values:

- Delaware First
- Diversity
- Partnership
- Engagement
- Impact

### **STRATEGIC MILESTONES**

The following strategic milestones build upon key strengths and critical capabilities of the University. The realization of each college, school, department and unit's strategic goals, aligned to these shared milestones, will assist in fulfilling the mission and vision of the University. In October 2010 a summary report assessing the University's progress on its Path to Prominence was developed and details the academic and administrative accomplishments, implementation efforts, current initiatives and future directions and challenges for UD. This report can be found at <http://www.udel.edu/prominence>.

- A Diverse and Stimulating Undergraduate Academic Environment
- A Premier Research and Graduate University
- Excellence in Professional Education
- The Initiative for the Planet
- The Global Initiative
- The Engaged University





*2010-11*

## **AT A GLANCE**

**History/Location:** The University of Delaware, a state assisted institution, is a Land Grant, Sea Grant, Space Grant, Carnegie Research University (very high research activity). The University, with origins in 1743, was chartered by the State of Delaware in 1833. A Women's College was opened in 1914, and in 1945 UD became permanently coeducational. The main campus is located in Newark, Delaware, a suburban community of nearly 30,000, situated midway between Philadelphia and Baltimore. Courses are also offered at the Wilmington campus and at other locations throughout the State, including Dover, Georgetown, Milford, and Lewes.

**Academic Schools, Programs, and Degrees:** Agriculture and Natural Resources; Arts and Sciences; Business and Economics; Earth, Ocean, and Environment; Education and Human Development; Engineering; and Health Sciences. UD offers 4 associate's programs, 137 bachelor's programs, 117 master's programs, 50 doctoral programs, and 12 dual graduate programs. In 2009-10, UD awarded 254 associate's degrees, 3,361 bachelor's degrees, 652 master's degrees, and 230 doctoral degrees. Doctoral and professional degrees were awarded in Agriculture, Business and Economics, Education, Engineering, Human Development and Family Studies, Marine Studies, Nursing, Urban Affairs and Public Policy, and a range of Arts & Sciences disciplines (including Art History, Biological Sciences, Chemistry and Biochemistry, Computer Science, English, History, Linguistics and Cognitive Science, Applied Mathematics, Physical Therapy, Physics, Political Science and International Relations, Psychology, and Sociology).

**Institutional Accreditation:** The University of Delaware has been continuously accredited by the Middle States Commission on Higher Education since that association's inception in 1921. The University's accreditation was reaffirmed in 2006 and its next self-study evaluation is scheduled for 2011. The regional, national and specialized accrediting organizations that accredit UD's programs/degrees appear at the end of this book.

**Faculty:** In 2010-11, there are 1,126 full-time faculty positions. Approximately 80% of full-time tenure-eligible faculty are tenured and over 80% of full-time faculty hold the doctorate or terminal professional degree in their field. Average total compensation in 2010-11 is \$175,694 for Full Professors, \$122,973 for Associate Professors, and \$104,904 for Assistant Professors.

**Enrollment:** Fall 2010 enrollment totals 21,177 which include 16,661 undergraduates, 3,670 graduate students, and 846 professional and continuing studies students. 15,888 (95%) of undergraduate and 2,727 (74%) of graduate students are enrolled on a full-time basis. 43% of undergraduate students are male. 63% of undergraduate and 72% of graduate students are from out-of-state. 5.3% of undergraduate and 4.9% of graduate students are African-American. Approximately 44% of undergraduate students live in residence halls.

**Admissions/Retention:** Over 23,500 students applied to the University of Delaware for Fall 2010 enrollment. 3,749 (27.9%) first-time freshmen accepted their admission offers. Average SAT score (critical reading plus mathematics) for first-time Newark Campus freshmen was 1210. On average, 92% of Newark Campus freshmen return for their sophomore year and over 3 out of 4 students graduate within five years.

**Costs:** Annual full-time undergraduate tuition and fees for 2010-11 are \$10,208 (in-state) and \$25,408 (out-of-state). Room and board is \$9,636. Total undergraduate costs for 2010-11 are \$19,844 (in-state) and \$35,044 (out-of-state).

**Finances:** For Fiscal Year 2010, Total Operating Revenues were \$778.4 million, including \$117.9 million for State Appropriations. Total Operating Expenses and Transfers were \$778.4 million. Externally Funded Activity totaled \$181.1 million.

**Institutional Affiliations:** UD is a member of the Association of Public and Land Grant Universities (APLU). In athletics, UD began NCAA Division I competition in 1973 for men and 1982 for women. UD currently competes in the Colonial Athletic Association (CAA) for all sports. Football competes at the Championship Subdivision level, and all other sports compete at the Division I level.

**SYNOPSIS OF UNDERGRADUATE DEGREE PROGRAMS AND MAJORS**

COLLEGE OF AGRICULTURE AND NATURAL RESOURCES	<i>Associate in Science</i>		
	<i>Bachelor of Science</i>	Agriculture and Natural Resources Agricultural Education Animal and Food Sciences Engineering Technology (includes Construction Technology and Technical Management, and Natural Resources Engineering Technology) Entomology Environmental Soil Science Food and Agribusiness Marketing and Management Food Science	Landscape Horticulture and Design (includes Landscape Horticulture, Landscape Design, and Public Horticulture) Natural Resource Management Plant Protection Plant Science Pre-Veterinary Medicine and Animal Biosciences Resource Economics (includes Environmental Economics and Sustainable Development) Statistics Wildlife Conservation
COLLEGE OF ARTS AND SCIENCES	<i>Associate in Arts</i>		
	<i>Associate in Science</i>		
	<i>Bachelor of Arts</i>	Ancient Greek and Roman Studies Anthropology Anthropology Education Art Art History Biological Sciences Biological Sciences Education Black American Studies Chemistry Chemistry Education Chinese Studies Communication (includes Interpersonal, Mass Communication) Comparative Literature Criminal Justice East Asian Studies English (includes Creative Writing, Drama, Ethnic/Cultural Studies, Film, Literary Studies, Professional Writing) English Education European Studies Foreign Languages and Literatures (includes Ancient Greek and Roman Studies, French Studies, German Studies, Italian Studies, Russian Studies, Spanish Studies, Three Languages) French Education French/Political Science German Education German/Political Science	History (includes American History, European History, and World History) History Education History/Classics History/French History/German History/Russian History/Spanish International Relations Italian Education Japanese Studies Latin American Studies Latin Education Material Culture Preservation Mathematical Sciences Mathematics Education Music (includes Music Management Studies) Philosophy Physics Physics Education Political Science (includes American Politics, Global Studies, Public Law, Public Policy and Administration) Political Science Education Psychology Psychology Education Public Policy Sociology (includes Emergency and Environmental Management, Health Services, Law and Society, and Social Welfare) Sociology Education Spanish Education Spanish/Political Science Women's Studies
	<i>Bachelor of Arts in Liberal Studies</i>	Liberal Studies	
	<i>Bachelor of Fine Arts</i>	Fine Arts	Visual Communications
	<i>Bachelor of Music</i>	Applied Music--Instrumental (Winds, Strings, and Percussion) Applied Music--Keyboard (Piano, Organ, Harpsichord) Applied Music--Guitar Applied Music--Voice	Music Theory/Composition Music Education--Instrumental (Winds, Strings, and Percussion) Music Education--General/Choral (includes Piano, Voice)
	<i>Bachelor of Science</i>	Apparel Design Biochemistry Biological Sciences (includes Biotechnology, Cellular and Molecular Biology and Genetics, Ecology and Organismic Biology) Chemistry (includes Environmental Chemistry) Cognitive Science Fashion Merchandising	Mathematical Sciences Mathematics Education Mathematics and Economics Neuroscience Organizational & Community Leadership Physics (includes Astronomy/Astrophysics) Psychology Quantitative Biology

ALFRED LERNER COLLEGE OF BUSINESS AND ECONOMICS	<i>Bachelor of Arts</i>	Economics (includes Applied Economics, Economic Theory and Econometrics, Economics Education)	
	<i>Bachelor of Science</i>	Accounting Economics (includes Applied Economics, Economic Theory and Econometrics) Finance Hotel, Restaurant and Institutional Management	International Business Studies Management Information Systems Management Marketing Operations Management Sport Management
COLLEGE OF EARTH, OCEAN, AND ENVIRONMENT	<i>Bachelor of Arts</i>	Earth Science Education Environmental Studies Geography	Geography Education Geology
	<i>Bachelor of Science</i>	Environmental Science	Geology
COLLEGE OF EDUCATION AND HUMAN DEVELOPEMENT	<i>Associate in Arts</i>		
	<i>Bachelor of Arts</i>	Educational Studies	
	<i>Bachelor of Science in Education</i>	Elementary Teacher Education	
	<i>Bachelor of Science</i>	Early Childhood Education Human Services	
COLLEGE OF ENGINEERING	<i>Bachelor of Arts</i>	Computer Science	
	<i>Bachelor of Science</i>	Computer Science Energy and Environmental Policy Information Systems	
	<i>Bachelor of Biomedical Engineering</i>	Biomedical Engineering	
	<i>Bachelor of Chemical Engineering</i>	Chemical Engineering	
	<i>Bachelor of Civil Engineering</i>	Civil Engineering	
	<i>Bachelor of Computer Engineering</i>	Computer Engineering	
	<i>Bachelor of Electrical Engineering</i>	Electrical Engineering	
	<i>Bachelor of Environmental Engineering</i>	Environmental Engineering	
COLLEGE OF HEALTH SCIENCES	<i>Bachelor of Science</i>	Applied Nutrition Athletic Training Dietetics Exercise Science (includes Biomechanics, Exercise Physiology and Medical Scholars)	Health Behavior Science Health and Physical Education Health Studies Medical Technology Nutritional Sciences
	<i>Bachelor of Science in Nursing</i>	Nursing	Baccalaureate for the Registered Nurse (B.R.N.)

New Programs in 2010-11: Bachelor of Arts in Chinese Studies; Bachelor of Arts in Japanese Studies; and Bachelor of Biomedical Engineering.

NOTE: The School of Urban Affairs and Public Policy reported to the Office of the Provost, but organizationally was included in the College of Arts and Sciences.

Source: 2010-11 Undergraduate and Graduate Catalogue

**SYNOPSIS OF GRADUATE DEGREE PROGRAMS**

COLLEGE OF AGRICULTURE AND NATURAL RESOURCES	<i>Master of Arts</i>	Agricultural Education		
	<i>Master of Science</i>	Agriculture and Resource Economics Animal Science Bioresources Engineering Entomology Food Science	Operations Research Plant and Soil Sciences Public Horticulture Statistics Wildlife Ecology	
COLLEGE OF ARTS AND SCIENCES	<i>Doctor of Philosophy</i>	Animal Science Entomology and Wildlife Ecology	Operations Research Plant and Soil Sciences	
	<i>Master of Arts</i>	American Material Culture Art History Chemistry and Biochemistry Communication Criminology English Foreign Languages and Literatures Foreign Languages and Pedagogy Historic Preservation	History Liberal Studies Linguistics and Cognitive Science Political Science and International Relations Psychology Sociology Urban Affairs and Public Policy	
	<i>Master of Fine Arts</i>	Fine Arts	Theatre	
	<i>Master of Music</i>	Music (includes Performance, Teaching and Composition)		
	<i>Master of Science</i>	Applied Mathematics Art Conservation Biological Sciences Biotechnology - Professional Science Master's	Chemistry and Biochemistry Disaster Science and Management Fashion Studies Mathematics Physics	
	<i>Master of Public Administration</i>	Public Administration		
	<i>Doctor of Philosophy</i>	Applied Mathematics Art History Biological Sciences Chemistry and Biochemistry Criminology Disaster Science and Management English History Linguistics	Mathematics Physics Political Science and International Relations Preservation Studies Psychology Sociology Urban Affairs and Public Policy	
	<i>Doctor of Philosophy/Master of Business Administration</i>	Biological Sciences/Business Administration		
	<i>Certificate Program</i>	Socially Responsible and Sustainable Apparel Business		
	ALFRED LERNER COLLEGE OF BUSINESS AND ECONOMICS	<i>Master of Arts</i>	Economics	Economics and Entrepreneurship for Educators
		<i>Master of Arts/Master of Business Administration</i>	Economics/Business Administration	
		<i>Dual MBA and Engineering Master's Programs</i>	See the College of Engineering	
<i>Master of Business Administration</i>		Business Administration		
<i>Master of Business Administration/Master of Science</i>		Business Administration/Accounting Business Administration/Finance Business Administration/ Organizational Effectiveness, Development and Change	Business Administration/ Information Systems and Technology Management	
<i>Master of Science</i>		Accounting Economics Finance Hospitality Information Management	Information Systems and Technology Management Organizational Effectiveness, Development and Change	
<i>Doctor of Philosophy/Master of Business Administration</i>		Biological Sciences/Business Administration		
<i>Doctor of Philosophy</i>		Economics		
COLLEGE OF EARTH, OCEAN, AND ENVIRONMENT	<i>Master of Arts</i>	Geography		
	<i>Master of Marine Management</i>	Marine Management		
	<i>Master of Marine Policy</i>	Marine Policy		
	<i>Master of Science</i>	Geography Geology	Marine Studies Ocean Engineering	
	<i>Doctor of Philosophy</i>	Geography Geology Marine Studies	Oceanography Ocean Engineering	
	<i>Certificate Program</i>	Geographic Information Science (GIS)		

COLLEGE OF EDUCATION AND HUMAN DEVELOPMENT	<i>Master of Arts</i>	Counseling in Higher Education Education School Psychology	Teaching English as a Second Language Teaching (M.A.T.)
	<i>Master of Education</i>	School Leadership Higher Education Administration Educational Technology	Exceptional Children and Youth Reading
	<i>Master of Instruction</i>	Instruction	
	<i>Master of Science</i>	Evaluation	Human Development and Family Studies
	<i>Education Specialist</i>	School Psychology	
	<i>Doctor of Education</i>	Educational Leadership	
	<i>Doctor of Philosophy</i>	Economic Education Education	Human Development and Family Studies
	<i>Certificate Program</i>	Human Services (including Early Learning and Literacy; Leadership in Early Childhood and Human Services; Services; and Parent Education and Family Support)	
<i>4 + 1 Programs</i>	BS in Human Services/MS in Human Services Leadership	BA in English/MA in Teaching English as a Second Language	
COLLEGE OF ENGINEERING	<i>Master of Applied Sciences</i>	Civil Engineering	
	<i>Master of Applied Sciences/MBA</i>	Civil Engineering/Business Administration	
	<i>Master of Chemical Engineering</i>	Chemical Engineering	
	<i>Master of Chemical Engineering/MBA</i>	Chemical Engineering/Business Administration	
	<i>Master of Civil Engineering</i>	Civil Engineering	
	<i>Master of Civil Engineering/MBA</i>	Civil Engineering/Business Administration	
	<i>Master of Energy and Environmental Policy</i>	Energy and Environmental Policy	
	<i>Master of Science</i>	Bioinformatics and Computational Biology (Professional Science Master's) Biomechanics and Movement Science Computer Science	Electrical and Computer Engineering Mechanical Engineering (thesis) Ocean Engineering
	<i>Master of Science/MBA</i>	Electrical and Computer Engineering/ Business Administration	Mechanical Engineering (thesis)/Business Administration
	<i>Master of Engineering: Mechanical</i>	Mechanical Engineering (non-thesis)	
	<i>Master of Engineering: Mechanical/MBA</i>	Mechanical Engineering (non-thesis)/Business Administration	
	<i>Master of Materials Science and Engineering</i>	Materials Science and Engineering	
	<i>Master of Materials Science and Engineering/MBA</i>	Materials Science and Engineering/Business Administration	
	<i>Doctor of Philosophy</i>	Chemical Engineering Civil Engineering Computer Science Electrical and Computer Engineering	Energy and Environmental Policy Materials Science and Engineering Mechanical Engineering Ocean Engineering
	<i>Certificate Program</i>	Bioinformatics and Computational Biology	Computational Science
COLLEGE OF HEALTH SCIENCES	<i>Master of Science</i>	Biomechanics and Movement Science Exercise Science (Biomechanics, Clinical Exercise Physiology, Exercise Physiology, Motor Control, Sports Medicine)	Health Promotion Health Services Administration Human Nutrition Human Nutrition/Dietetic Internship Program
	<i>Master of Science in Nursing</i>	Nursing (includes Adult Nurse Practitioner, Clinical Nurse Specialist, Family Nurse Practitioner, Health Services Administration, and Neonatal Nurse Practitioner Certification)	
	<i>Doctor of Philosophy</i>	Applied Physiology Biomechanics and Movement Science	Nursing
	<i>Doctor of Physical Therapy</i>	Physical Therapy	
	<i>Certificate Programs</i>	Nutrition and Dietetics	Post-Masters's Nursing

New Programs in 2010-11: Master of Arts in Teaching; Doctor of Philosophy in Economic Education; Certificate Program in Human Services; Master of Science AND Certificate Program in Bioinformatics and Computational Biology; Doctor of Philosophy in Applied Physiology; Doctor of Philosophy in Nursing.

NOTE: The School of Urban Affairs and Public Policy reported to the Office of the Provost, but organizationally was included in the College of Arts and Sciences in 2010.

Source: 2010-11 Undergraduate and Graduate Catalogue

**TWENTY-FIVE MOST POPULAR  
UNDERGRADUATE MAJORS**  
*Fall 2010*

Rank	Major
1	Biological Sciences
2	Nursing
3	Psychology
4	Finance
5	Elementary Teacher Education
6	Exercise Science
7	Mechanical Engineering
8	Accounting
9	Marketing
10	English
11	Political Science
12	Criminal Justice
13	Chemical Engineering
14	Civil Engineering
15	Hotel, Restaurant & Institutional Management
16	History
17	Business Administration
18	Human Services
19	Fashion Merchandising
20	Communication Interest
21	International Relations
22	Management
23	Communication
24	Economics
25	Dietetics

Source: Office of Institutional Research/UDEW

**AVERAGE SCHOLASTIC APTITUDE TEST SCORES  
BY RESIDENCE FOR FIRST-TIME FRESHMEN  
*Fall 2010***

<b>SAT Critical Reading Scores</b>	
<b>Associate in Arts</b>	
Delawareans <sup>1</sup>	501
<b>Newark Campus</b>	
Delawareans	574
Nonresidents	613
<b>Total</b>	<b>599</b>
National Avg.	501
<b>SAT Mathematics Scores</b>	
<b>Associate in Arts</b>	
Delawareans <sup>1</sup>	500
<b>Newark Campus</b>	
Delawareans	579
Nonresidents	629
<b>Total</b>	<b>611</b>
National Avg.	516
<b>SAT Writing Scores</b>	
<b>Associate in Arts</b>	
Delawareans <sup>1</sup>	482
<b>Newark Campus</b>	
Delawareans	569
Nonresidents	614
<b>Total</b>	<b>597</b>
National Avg.	492

<sup>1</sup> Includes children of employees and armed forces personnel stationed in Delaware and students who are in the process of fulfilling the 12 month durational requirement for Delaware residency.

Source: Official ADM Extract,  
Office of Institutional Research/UDEW



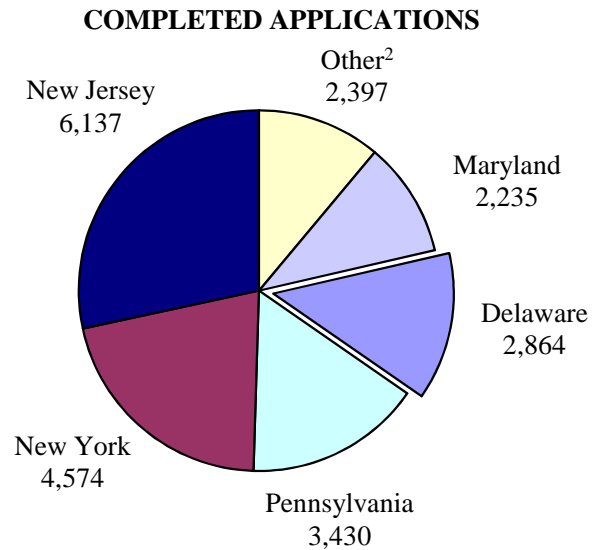
**FIRST-TIME FRESHMAN ADMISSIONS ACTIVITY**  
**Fall 2010**

	Total Applications	Completed Applications	Offered Admission	Offer Rate	Offer Accepted	Yield Rate
<b>ALL STUDENTS</b>						
Applied to Newark Campus	26,351	23,510	12,752	54.2%	3,393	26.6%
Applied to Newark Campus, but admitted to Associate in Arts Program	--	--	569	2.4%	273	48.0%
Applied to Associate in Arts Program	197	156	104	66.7%	83	79.8%
<b>TOTAL</b>	<b>26,548</b>	<b>23,666</b>	<b>13,425</b>	<b>56.7%</b>	<b>3,749</b>	<b>27.9%</b>
<b>DELAWAREANS</b>						
Applied to Newark Campus	3,001	2,708	1,850	68.3%	1,191	64.4%
Applied to Newark Campus, but admitted to Associate in Arts Program <sup>1</sup>	--	--	569	21.0%	273	48.0%
Applied to Associate in Arts Program <sup>1</sup>	197	156	104	66.7%	83	79.8%
<b>TOTAL</b>	<b>3,198</b>	<b>2,864</b>	<b>2,523</b>	<b>88.1%</b>	<b>1,547</b>	<b>61.3%</b>
<b>NONRESIDENTS</b>						
Applied to Newark Campus	23,350	20,802	10,902	52.4%	2,202	20.2%
<b>TOTAL</b>	<b>23,350</b>	<b>20,802</b>	<b>10,902</b>	<b>52.4%</b>	<b>2,202</b>	<b>20.2%</b>

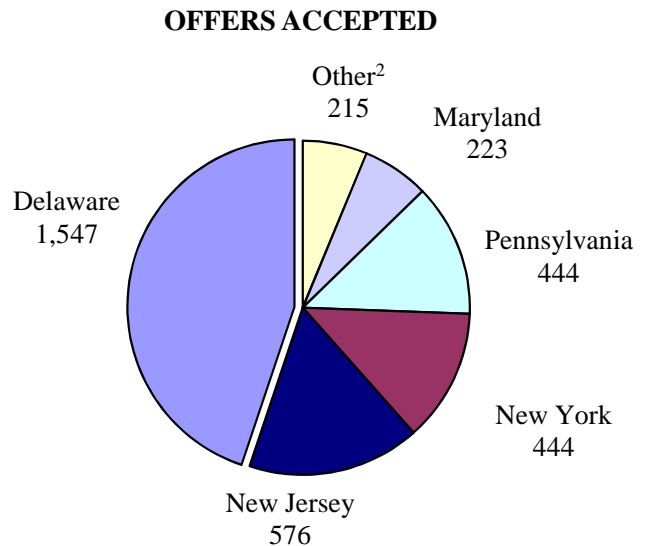
<sup>1</sup> Includes children of employees and armed forces personnel stationed in Delaware, and students who are in the process of fulfilling the 12 month durational requirement for Delaware residency.

**DISTRIBUTION OF COMPLETED ADMISSIONS APPLICATIONS  
AND ACCEPTED OFFERS  
FIRST-TIME FRESHMEN FROM SELECT REGIONAL STATES  
Fall 2010**

STATE	COMPLETED APPLICATIONS	% OF TOTAL <sup>1</sup>
New Jersey	6,137	28.4%
New York	4,574	21.1%
Pennsylvania	3,430	15.9%
<b>DELAWARE</b>	<b>2,864</b>	<b>13.2%</b>
Maryland	2,235	10.3%
Massachusetts	954	4.4%
Connecticut	906	4.2%
Virginia	470	2.2%
District of Columbia	67	0.3%
<b>TOTAL<sup>1</sup></b>	<b>21,637</b>	<b>100.0%</b>



STATE	OFFER ACCEPTED	% OF TOTAL <sup>1</sup>
<b>DELAWARE</b>	<b>1,547</b>	<b>44.9%</b>
New Jersey	576	16.7%
New York	444	12.9%
Pennsylvania	444	12.9%
Maryland	223	6.5%
Connecticut	87	2.5%
Massachusetts	81	2.3%
Virginia	36	1.0%
District of Columbia	11	0.3%
<b>TOTAL<sup>1</sup></b>	<b>3,449</b>	<b>100.0%</b>



<sup>1</sup> Total refers to applications and accepted offers from these nine states only.

<sup>2</sup> Other includes Connecticut, Massachusetts, Virginia, and the District of Columbia.

Source: Official ADM Extract,  
Office of Institutional Research/UDEW

**ENROLLMENT BY COLLEGE OR DIVISION  
AND TIME STATUS  
Fall 2006 Through Fall 2010**

	2006	2007	2008	2009	2010
<b>UNIVERSITY TOTAL</b>	<b>20,380</b>	<b>20,342</b>	<b>20,500</b>	<b>21,138</b>	<b>21,177</b>
Full-Time	17,546	17,679	17,881	18,469	18,621
Part-Time	2,834	2,663	2,619	2,669	2,556
<b>Undergraduate<sup>1</sup></b>	<b>15,849</b>	<b>15,983</b>	<b>16,075</b>	<b>16,521</b>	<b>16,661</b>
Full-Time	14,992	15,152	15,287	15,786	15,888
Part-Time	857	831	788	735	773
<b>Graduate<sup>2</sup></b>	<b>3,446</b>	<b>3,405</b>	<b>3,448</b>	<b>3,634</b>	<b>3,670</b>
Full-Time	2,540	2,514	2,584	2,671	2,727
Part-Time	906	891	864	963	943
<b>Professional &amp; Continuing Studies<sup>3</sup></b>	<b>1,085</b>	<b>954</b>	<b>977</b>	<b>983</b>	<b>846</b>
Full-Time	14	13	10	12	6
Part-Time	1,071	941	967	971	840
<b>College of Agriculture &amp; Natural Resources</b>	<b>771</b>	<b>833</b>	<b>849</b>	<b>881</b>	<b>877</b>
Undergraduate	596	664	669	698	713
Full-Time	529	606	623	657	670
Part-Time	67	58	46	41	43
Graduate	175	169	180	183	164
Full-Time	160	157	172	175	157
Part-Time	15	12	8	8	7
<b>College of Arts &amp; Sciences<sup>4</sup></b>	<b>7,755</b>	<b>7,597</b>	<b>7,525</b>	<b>7,269</b>	<b>7,402</b>
Undergraduate	6,540	6,409	6,288	6,162	6,262
Full-Time	6,169	6,010	5,914	5,821	5,935
Part-Time	371	399	374	341	327
Graduate	1,215	1,188	1,237	1,107	1,140
Full-Time	1,094	1,082	1,140	1,017	1,042
Part-Time	121	106	97	90	98
<b>Office of University Studies (No Graduate Program)</b>	<b>1,014</b>	<b>923</b>	<b>956</b>	<b>1,048</b>	<b>1,126</b>
Undergraduate	1,014	923	956	1,048	1,126
Full-Time	974	890	916	1,014	1,096
Part-Time	40	33	40	34	30

## ENROLLMENT (Continued)

	2006	2007	2008	2009	2010
<b>Alfred Lerner College of Business &amp; Economics<sup>5</sup></b>	<b>2,785</b>	<b>2,899</b>	<b>3,452</b>	<b>3,396</b>	<b>3,470</b>
Undergraduate	2,273	2,368	2,906	2,786	2,826
Full-Time	2,206	2,314	2,835	2,720	2,757
Part-Time	67	54	71	66	69
Graduate	512	531	546	610	644
Full-Time	243	245	253	281	341
Part-Time	269	286	293	329	303
<b>College of Earth, Ocean, &amp; Environment<sup>6</sup></b>	<b>148</b>	<b>153</b>	<b>165</b>	<b>310</b>	<b>368</b>
Undergraduate	24	39	47	167	215
Full-Time	23	35	44	160	207
Part-Time	1	4	3	7	8
Graduate	124	114	118	143	153
Full-Time	123	112	114	139	149
Part-Time	1	2	4	4	4
<b>College of Education &amp; Human Development</b>	<b>2,631</b>	<b>2,523</b>	<b>2,071</b>	<b>2,107</b>	<b>1,448</b>
Undergraduate	1,906	1,852	1,401	1,396	997
Full-Time	1,825	1,775	1,345	1,364	965
Part-Time	81	77	56	32	32
Graduate	725	671	670	711	451
Full-Time	399	389	380	409	201
Part-Time	326	282	290	302	250
<b>College of Engineering<sup>7</sup></b>	<b>1,731</b>	<b>1,794</b>	<b>1,845</b>	<b>2,056</b>	<b>2,577</b>
Undergraduate	1,206	1,286	1,336	1,510	1,820
Full-Time	1,173	1,255	1,303	1,482	1,770
Part-Time	33	31	33	28	50
Graduate	525	508	509	546	757
Full-Time	452	448	463	484	673
Part-Time	73	60	46	62	84
<b>College of Health Sciences</b>	<b>1,822</b>	<b>2,001</b>	<b>1,992</b>	<b>2,324</b>	<b>2,289</b>
Undergraduate	1,652	1,777	1,804	1,990	1,928
Full-Time	1,501	1,634	1,659	1,824	1,740
Part-Time	151	143	145	166	188
Graduate <sup>8</sup>	170	224	188	334	361
Full-Time	69	81	62	166	164
Part-Time	101	143	126	168	197

**ENROLLMENT (Continued)**

	2006	2007	2008	2009	2010
<b>Newark Campus</b>	<b>18,657</b>	<b>18,723</b>	<b>18,855</b>	<b>19,391</b>	<b>19,557</b>
Undergraduate	15,211	15,318	15,407	15,757	15,887
Full-Time	14,400	14,519	14,639	15,042	15,140
Part-Time	811	799	768	715	747
Graduate	3,446	3,405	3,448	3,634	3,670
Full-Time	2,540	2,514	2,584	2,671	2,727
Part-Time	906	891	864	963	943
<b>Associate in Arts: Georgetown</b>	<b>153</b>	<b>118</b>	<b>148</b>	<b>156</b>	<b>168</b>
Undergraduate	153	118	148	156	168
Full-Time	138	117	144	153	162
Part-Time	15	1	4	3	6
<b>Associate in Arts: Dover</b>	<b>113</b>	<b>115</b>	<b>112</b>	<b>146</b>	<b>144</b>
Undergraduate	113	115	112	146	144
Full-Time	109	113	107	144	141
Part-Time	4	2	5	2	3
<b>Associate in Arts: Wilmington</b>	<b>372</b>	<b>432</b>	<b>408</b>	<b>462</b>	<b>462</b>
Undergraduate	372	432	408	462	462
Full-Time	345	403	397	447	445
Part-Time	27	29	11	15	17
<b>University Associate in Arts Program</b>	<b>638</b>	<b>665</b>	<b>668</b>	<b>764</b>	<b>774</b>
Undergraduate	638	665	668	764	774
Full-Time	592	633	648	744	748
Part-Time	46	32	20	20	26

<sup>1</sup> Official 10th Day headcounts, Newark Campus and University Associate in Arts Program combined.

<sup>2</sup> Graduate students on sustaining status are considered full-time if the student spends at least one-half time on the completion of his/her thesis or dissertation.

<sup>3</sup> Professional & Continuing Studies Students are non-matriculated and are unclassified although enrolled in undergraduate and graduate degree credit courses.

<sup>4</sup> The Fashion and Apparel Studies Department moved to the College of Arts and Sciences in 2010. The School of Urban Affairs and Public Policy reported to the Office of the Provost, but organizationally was included in the College of Arts and Sciences in 2010.

<sup>5</sup> The Hotel, Restaurant & Institutional Management Department and the Sport Management/Sport Management Interest Program moved to the Alfred Lerner College of Business and Economics in 2008 and 2010, respectively.

<sup>6</sup> The Geology Department and the Geography Department moved to the College of Earth, Ocean & Environment in 2006 and 2009, respectively.

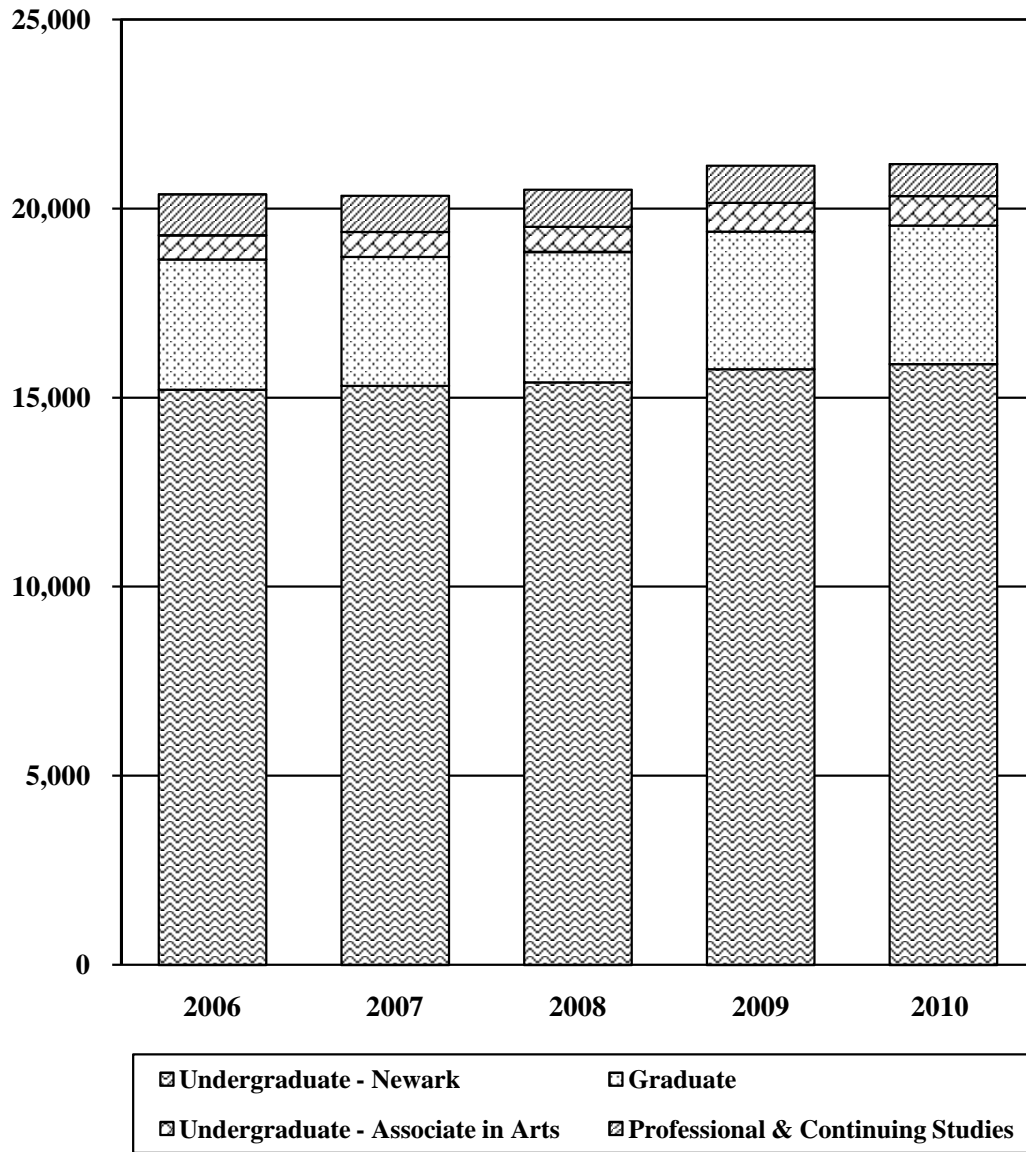
<sup>7</sup> The Computer Science Department and the Energy and Environmental Policy Program moved to the College of Engineering in 2010.

<sup>8</sup> The Department of Physical Therapy moved to the College of Health Sciences in 2009.

Source: Office of Institutional Research/UDEW

## TRENDS IN TOTAL ENROLLMENT

*Fall 2006 Through Fall 2010*



**ETHNICITY OF STUDENTS BY TIME STATUS**  
*Fall 2006 Through Fall 2010*

**A. FULL-TIME MATRICULATED STUDENTS**

	2006		2007		2008		2009		2010	
	N	%	N	%	N	%	N	%	N	%
<b>Undergraduate<sup>1</sup></b>										
<b>Total</b>	<b>14,992</b>	<b>100.0</b>	<b>15,152</b>	<b>100.0</b>	<b>15,287</b>	<b>100.0</b>	<b>15,786</b>	<b>100.0</b>	<b>15,888</b>	<b>100.0</b>
White	12,451	83.1	12,286	81.1	12,256	80.2	12,398	78.5	12,291	77.4
African-American	800	5.3	846	5.6	839	5.5	865	5.5	831	5.2
Hispanic	661	4.4	778	5.1	831	5.4	885	5.6	909	5.7
Asian	575	3.8	589	3.9	643	4.2	680	4.3	635	4.0
Native American	52	0.3	49	0.3	42	0.3	29	0.2	20	0.1
Non-Resident Alien	96	0.6	148	1.0	160	1.0	304	1.9	522	3.3
Other <sup>2</sup>	357	2.4	456	3.0	516	3.4	625	4.0	680	4.3
<b>Graduate</b>										
<b>Total</b>	<b>2,540</b>	<b>100.0</b>	<b>2,514</b>	<b>100.0</b>	<b>2,584</b>	<b>100.0</b>	<b>2,671</b>	<b>100.0</b>	<b>2,727</b>	<b>100.0</b>
White	1,455	57.3	1,372	54.6	1,410	54.6	1,414	52.9	1,429	52.4
African-American	101	4.0	109	4.3	108	4.2	103	3.9	94	3.4
Hispanic	50	2.0	42	1.7	50	1.9	63	2.4	58	2.1
Asian	68	2.7	64	2.5	73	2.8	72	2.7	82	3.0
Native American	3	0.1	4	0.2	9	0.3	11	0.4	7	0.3
Non-Resident Alien	794	31.3	838	33.3	874	33.8	947	35.5	988	36.2
Other <sup>2</sup>	69	2.7	85	3.4	60	2.3	61	2.3	69	2.5

**B. PART-TIME MATRICULATED STUDENTS**

	2006		2007		2008		2009		2010	
	N	%	N	%	N	%	N	%	N	%
<b>Undergraduate<sup>1</sup></b>										
<b>Total</b>	<b>857</b>	<b>100.0</b>	<b>831</b>	<b>100.0</b>	<b>788</b>	<b>100.0</b>	<b>735</b>	<b>100.0</b>	<b>773</b>	<b>100.0</b>
White	674	78.6	643	77.4	624	79.2	573	78.0	599	77.5
African-American	86	10.0	65	7.8	57	7.2	62	8.4	57	7.4
Hispanic	23	2.7	26	3.1	26	3.3	32	4.4	32	4.1
Asian	35	4.1	42	5.1	28	3.6	28	3.8	34	4.4
Native American	7	0.8	7	0.8	8	1.0	4	0.5	2	0.3
Non-Resident Alien	4	0.5	14	1.7	14	1.8	6	0.8	8	1.0
Other <sup>2</sup>	28	3.3	34	4.1	31	3.9	30	4.1	41	5.3

**B. PART-TIME MATRICULATED STUDENTS (Continued)**

	2006		2007		2008		2009		2010	
	N	%	N	%	N	%	N	%	N	%
<b>Graduate</b>										
<b>Total</b>	<b>906</b>	<b>100.0</b>	<b>891</b>	<b>100.0</b>	<b>864</b>	<b>100.0</b>	<b>963</b>	<b>100.0</b>	<b>943</b>	<b>100.0</b>
White	706	77.9	675	75.8	666	77.1	726	75.4	678	71.9
African-American	59	6.5	49	5.5	56	6.5	75	7.8	84	8.9
Hispanic	13	1.4	22	2.5	25	2.9	25	2.6	30	3.2
Asian	37	4.1	52	5.8	54	6.3	58	6.0	66	7.0
Native American	4	0.4	3	0.3	3	0.3	3	0.3	4	0.4
Non-Resident Alien	49	5.4	44	4.9	26	3.0	30	3.1	32	3.4
Other <sup>2</sup>	38	4.2	46	5.2	34	3.9	46	4.8	49	5.2

**C. PROFESSIONAL & CONTINUING STUDIES STUDENTS**

	2006		2007		2008		2009		2010	
	N	%	N	%	N	%	N	%	N	%
<b>Undergraduate</b>										
<b>Total</b>	<b>1,085</b>	<b>100.0</b>	<b>954</b>	<b>100.0</b>	<b>977</b>	<b>100.0</b>	<b>983</b>	<b>100.0</b>	<b>846</b>	<b>100.0</b>
White	828	76.3	702	73.6	682	69.8	700	71.2	560	66.2
African-American	89	8.2	86	9.0	101	10.3	86	8.7	87	10.3
Hispanic	41	3.8	25	2.6	31	3.2	26	2.6	30	3.5
Asian	72	6.6	47	4.9	55	5.6	61	6.2	48	5.7
Native American	2	0.2	3	0.3	4	0.4	6	0.6	8	0.9
Non-Resident Alien	16	1.5	24	2.5	44	4.5	65	6.6	60	7.1
Other <sup>2</sup>	37	3.4	67	7.0	60	6.1	39	4.0	53	6.3

<sup>1</sup> Official 10<sup>th</sup> Day headcounts, Newark Campus and University Associate in Arts Program combined.

<sup>2</sup> Other includes Native Hawaiian or Other Pacific Islander, Two or More Races, Non-Specified, or Unknown.

Note: Percentages may not total to 100.0 because of rounding.

Source: Office of Institutional Research/UDEW



**UNDERGRADUATE ENROLLMENT BY GENDER**  
**NEWARK CAMPUS**  
*Fall 2006 Through Fall 2010*

	2006		2007		2008		2009		2010	
	N	%	N	%	N	%	N	%	N	%
<b>Total - Newark Campus</b>										
Women	8,836	58	8,914	58	8,906	58	9,081	58	9,067	57
Men	6,375	42	6,404	42	6,501	42	6,676	42	6,820	43
<b>College of Agriculture &amp; Natural Resources</b>										
Women	350	59	411	62	407	61	433	62	449	63
Men	246	41	253	38	262	39	265	38	264	37
<b>College of Arts &amp; Sciences<sup>1</sup></b>										
Women	3,905	60	3,768	59	3,725	59	3,691	60	3,889	62
Men	2,635	40	2,641	41	2,563	41	2,471	40	2,373	38
<b>Alfred Lerner College of Business &amp; Economics<sup>2</sup></b>										
Women	901	40	982	41	1,280	44	1,232	44	1,205	43
Men	1,372	60	1,386	59	1,626	56	1,554	56	1,620	57
<b>College of Earth, Ocean, &amp; Environment<sup>3</sup></b>										
Women	12	50	22	56	22	47	79	47	111	52
Men	12	50	17	44	25	53	88	53	104	48
<b>College of Education &amp; Human Development</b>										
Women	1,631	86	1,604	87	1,297	93	1,301	93	948	95
Men	275	14	248	13	104	7	95	7	49	5
<b>College of Engineering<sup>4</sup></b>										
Women	236	20	281	22	274	21	288	19	339	19
Men	970	80	1,005	78	1,062	79	1,222	81	1,481	81
<b>College of Health Sciences</b>										
Women	1,216	74	1,295	73	1,339	74	1,452	73	1,516	79
Men	436	26	482	27	465	26	538	27	413	21
<b>Office of University Studies</b>										
Women	585	58	551	60	562	59	605	58	610	54
Men	429	42	372	40	394	41	443	42	516	46

<sup>1</sup> The Fashion and Apparel Studies Department moved to the College of Arts and Sciences in 2010. The School of Urban Affairs and Public Policy reported to the Office of the Provost, but organizationally was included in the College of Arts and Sciences in 2010.

<sup>2</sup> The Hotel, Restaurant & Institutional Management Department and the Sport Management/Sport Management Interest Program moved to the Alfred Lerner College of Business and Economics in 2008 and 2010, respectively.

<sup>3</sup> The Geology Department and the Geography Department moved to the College of Earth, Ocean & Environment in 2006 and 2009, respectively.

<sup>4</sup> The Computer Science Department moved to the College of Engineering in 2010.

Source: Office of Institutional Research/UDEW

**GRADUATE ENROLLMENT BY GENDER**  
**NEWARK CAMPUS**  
*Fall 2006 Through Fall 2010*

	2006		2007		2008		2009		2010	
	N	%	N	%	N	%	N	%	N	%
<b>Total - Newark Campus</b>										
Women	1,809	52	1,807	53	1,802	52	1,889	52	1,895	52
Men	1,637	48	1,598	47	1,646	48	1,745	48	1,775	48
<b>College of Agriculture &amp; Natural Resources</b>										
Women	96	55	96	57	95	53	98	54	96	59
Men	79	45	73	43	85	47	85	46	68	41
<b>College of Arts &amp; Sciences<sup>1</sup></b>										
Women	676	56	674	57	677	55	595	54	639	56
Men	539	44	514	43	560	45	512	46	501	44
<b>Alfred Lerner College of Business &amp; Economics<sup>2</sup></b>										
Women	190	37	201	38	223	41	253	41	285	44
Men	322	63	330	62	323	59	357	59	359	56
<b>College of Earth, Ocean, &amp; Environment<sup>3</sup></b>										
Women	61	49	58	51	54	46	74	52	79	52
Men	63	51	56	49	64	54	69	48	74	48
<b>College of Education &amp; Human Development</b>										
Women	509	70	463	69	459	69	482	68	310	69
Men	216	30	208	31	211	31	229	32	141	31
<b>College of Engineering<sup>4</sup></b>										
Women	137	26	125	25	134	26	135	25	198	26
Men	388	74	383	75	375	74	411	75	559	74
<b>College of Health Sciences<sup>5</sup></b>										
Women	140	82	190	85	160	85	252	75	288	80
Men	30	18	34	15	28	15	82	25	73	20

<sup>1</sup> The Fashion and Apparel Studies Department moved to the College of Arts and Sciences in 2010. The School of Urban Affairs and Public Policy reported to the Office of the Provost, but organizationally was included in the College of Arts and Sciences in 2010.

<sup>2</sup> The Hotel, Restaurant & Institutional Management Department moved to the Alfred Lerner College of Business and Economics in 2008.

<sup>3</sup> The Geology Department and the Geography Department moved to the College of Earth, Ocean & Environment in 2006 and 2009, respectively.

<sup>4</sup> The Computer Science Department and the Energy and Environmental Policy Program moved to the College of Engineering in 2010.

<sup>5</sup> The Department of Physical Therapy moved to the College of Health Sciences in 2009.

Source: Office of Institutional Research/UDEW

**ENROLLMENT BY RESIDENCE STATUS**  
*Fall 2006 Through Fall 2010*

	2006		2007		2008		2009		2010	
	N	%	N	%	N	%	N	%	N	%
<b>TOTAL STUDENTS</b>	<b>20,380</b>		<b>20,342</b>		<b>20,500</b>		<b>21,138</b>		<b>21,177</b>	
Delawareans	8,618	42	8,295	41	8,038	39	8,278	39	8,314	39
Nonresidents	11,762	58	12,047	59	12,462	61	12,860	61	12,863	61
<b>NEWARK CAMPUS</b>										
<b>Undergraduate</b>	<b>15,211</b>		<b>15,318</b>		<b>15,407</b>		<b>15,757</b>		<b>15,887</b>	
Delawareans	6,044	40	5,883	38	5,613	36	5,678	36	5,870	37
Nonresidents	9,167	60	9,435	62	9,794	64	10,079	64	10,017	63
<b>Graduate</b>	<b>3,446</b>		<b>3,405</b>		<b>3,448</b>		<b>3,634</b>		<b>3,670</b>	
Delawareans	1,088	32	1,047	31	1,041	30	1,113	31	1,042	28
Nonresidents	2,358	68	2,358	69	2,407	70	2,521	69	2,628	72
<b>ASSOCIATE IN ARTS PROGRAM</b>	<b>638</b>		<b>665</b>		<b>668</b>		<b>764</b>		<b>774</b>	
Delawareans <sup>1</sup>	638	100	665	100	668	100	764	100	774	100
<b>PROFESSIONAL &amp; CONTINUING STUDIES</b>	<b>1,085</b>		<b>954</b>		<b>977</b>		<b>983</b>		<b>846</b>	
Delawareans	848	78	700	73	716	73	723	74	628	74
Nonresidents	237	22	254	27	261	27	260	26	218	26

<sup>1</sup> Includes children of employees and armed forces personnel stationed in Delaware, and students who are in the process of fulfilling the twelve month durational requirement for Delaware residency.

Source: Office of Institutional Research/UDEW



**RETENTION RATES FOR  
ENTERING FIRST-TIME, FULL-TIME FRESHMEN**

<b>NEWARK CAMPUS</b>	<b>2000</b>	<b>2001</b>	<b>2002</b>	<b>2003</b>	<b>2004</b>	<b>2005</b>	<b>2006</b>	<b>2007</b>	<b>2008</b>	<b>2009</b>
<b>Total # of Freshmen</b>	<b>3,128</b>	<b>3,362</b>	<b>3,401</b>	<b>3,433</b>	<b>3,442</b>	<b>3,506</b>	<b>3,252</b>	<b>3,571</b>	<b>3,500</b>	<b>3,811</b>
% Retention to 2nd Fall	87.5	88.6	89.9	88.4	88.8	90.3	90.4	91.4	91.2	92.0

<b>ASSOCIATE IN ARTS PROGRAM</b>	<b>2004</b>	<b>2005</b>	<b>2006</b>	<b>2007</b>	<b>2008</b>	<b>2009</b>
<b>GEORGETOWN</b>						
<b>Total # of Freshmen</b>	<b>83</b>	<b>58</b>	<b>70</b>	<b>63</b>	<b>76</b>	<b>79</b>
% Retention to 2nd Fall	61.4	72.4	74.3	90.5	72.4	77.2
<b>DOVER</b>						
<b>Total # of Freshmen</b>	<b>47</b>	<b>73</b>	<b>54</b>	<b>71</b>	<b>52</b>	<b>84</b>
% Retention to 2nd Fall	63.8	75.3	75.9	80.3	73.1	75.0
<b>WILMINGTON</b>						
<b>Total # of Freshmen</b>	<b>190</b>	<b>181</b>	<b>191</b>	<b>208</b>	<b>207</b>	<b>238</b>
% Retention to 2nd Fall	69.5	70.7	72.8	81.2	72.9	79.0
<b>TOTAL ASSOCIATE IN ARTS PROGRAM</b>						
<b>Total # of Freshmen</b>	<b>320</b>	<b>312</b>	<b>315</b>	<b>342</b>	<b>335</b>	<b>401</b>
% Retention to 2nd Fall	66.6	72.1	73.7	82.7	72.8	77.8

*Note: All entering new freshman cohorts adjusted to comply with IPEDS Graduation Rate Survey Definitions.*

Source: Office of Institutional Research

## GRADUATION RATES FOR ENTERING FIRST-TIME, FULL-TIME FRESHMEN

NEWARK CAMPUS	2001	2002	2003	2004	2005
<b>Total Number in Cohort</b>	<b>3,362</b>	<b>3,401</b>	<b>3,433</b>	<b>3,442</b>	<b>3,506</b>
<b>% Graduating within Four Years</b>	<b>63.9</b>	<b>67.1</b>	<b>61.3</b>	<b>61.8</b>	<b>65.2</b>
Males	54.1	58.2	53.9	54.1	56.3
Females	71.0	72.8	66.9	67.3	71.3
African-Americans	43.8	41.1	44.4	38.7	45.2
Asians	57.9	62.0	59.9	51.6	61.3
Hispanics	50.0	66.1	54.5	54.8	57.5
Whites	65.8	69.0	63.3	64.5	67.2
Residents	52.1	55.7	49.4	51.0	53.5
Nonresidents	69.5	73.7	69.1	68.0	71.0
<b>% Graduating within Five Years</b>	<b>75.8</b>	<b>77.9</b>	<b>73.7</b>	<b>74.9</b>	<b>76.0</b>
Males	70.5	72.7	69.4	71.8	69.9
Females	79.7	81.2	76.9	77.1	80.3
African-Americans	61.6	56.8	59.6	52.8	60.1
Asians	72.9	74.1	71.5	67.7	70.8
Hispanics	67.9	71.6	68.5	67.5	69.4
Whites	77.1	79.6	75.3	77.3	78.0
Residents	72.2	72.0	66.4	69.0	69.1
Nonresidents	77.6	82.0	78.5	78.2	79.5

ASSOCIATE IN ARTS PROGRAM	2004	2005	2006
<b>GEORGETOWN</b>			
<b>Total Number in Cohort</b>	<b>83</b>	<b>58</b>	<b>70</b>
% Graduating with AA within Two Years	9.6	12.1	34.3
% Graduating with AA within Three Years	18.1	29.3	47.1
% Graduating with AA within Four Years	20.5	31.0	51.4
<b>DOVER</b>			
<b>Total Number in Cohort</b>	<b>47</b>	<b>73</b>	<b>54</b>
% Graduating with AA within Two Years	40.4	34.2	33.3
% Graduating with AA within Three Years	46.8	52.1	46.3
% Graduating with AA within Four Years	48.9	52.1	51.9
<b>WILMINGTON</b>			
<b>Total Number in Cohort</b>	<b>190</b>	<b>181</b>	<b>191</b>
% Graduating with AA within Two Years	21.5	24.5	31.4
% Graduating with AA within Three Years	49.2	46.7	54.5
% Graduating with AA within Four Years	50.8	51.6	57.1
<b>TOTAL ASSOCIATE IN ARTS PROGRAM</b>			
<b>Total Number in Cohort</b>	<b>320</b>	<b>312</b>	<b>315</b>
% Graduating with AA within Two Years	21.2	24.4	32.4
% Graduating with AA within Three Years	40.8	44.8	51.4
% Graduating with AA within Four Years	42.7	47.9	54.9

Note: Data comply with IPEDS Graduation Rate Survey Definitions.

Associate in Arts Program graduation rates recalculated to reflect July 1 through June 30.

Source: Office of Institutional Research

**DEGREES GRANTED BY COLLEGE AND LEVEL**  
*2005-06 Through 2009-10*

	2006	2007	2008	2009	2010
<b>UNIVERSITY TOTALS</b>	<b>4,678</b>	<b>4,575</b>	<b>4,591</b>	<b>4,742</b>	<b>4,497</b>
Associate's Degrees	77	162	188	195	254
Bachelor's Degrees	3,683	3,416	3,500	3,569	3,361
Master's Degrees	696	773	695	727	652
Doctorates	222	224	208	251	230
<b>College of Agriculture &amp; Natural Resources</b>					
Associate's Degrees	1	1	1	2	1
Bachelor's Degrees	164	141	162	153	142
Master's Degrees	39	54	57	48	46
Doctorates	9	3	9	5	1
<b>College of Arts &amp; Sciences<sup>1</sup></b>					
Associate's Degrees	76	160	187	178	244
Bachelor's Degrees	1,750	1,549	1,586	1,564	1,443
Master's Degrees	179	208	194	175	140
Doctorates	102	102	100	127	82
<b>Alfred Lerner College of Business &amp; Economics<sup>2</sup></b>					
Bachelor's Degrees	565	598	557	766	729
Master's Degrees	186	196	164	191	172
Doctorates	3	3	2	7	2
<b>College of Earth, Ocean, &amp; Environment<sup>3</sup></b>					
Bachelor's Degrees	--	8	8	9	35
Master's Degrees	10	10	10	10	11
Doctorates	9	7	6	18	14
<b>College of Education &amp; Public Policy</b>					
Associate's Degrees	0	1	0	15	9
Bachelor's Degrees	580	503	547	410	345
Master's Degrees	185	202	174	183	171
Doctorates	40	43	43	39	43
<b>College of Engineering<sup>4</sup></b>					
Bachelor's Degrees	205	238	238	231	224
Master's Degrees	70	68	60	63	66
Doctorates	59	65	48	49	52
<b>College of Health Sciences</b>					
Bachelor's Degrees	419	379	402	436	443
Master's Degrees	27	35	36	57	46
Doctorates <sup>5</sup>	0	1	0	6	36

<sup>1</sup> The Fashion and Apparel Studies Department moved to the College of Arts and Sciences in 2010. The School of Urban Affairs and Public Policy reported to the Office of the Provost, but organizationally was included in the College of Arts and Sciences in 2010.

<sup>2</sup> The Hotel, Restaurant & Institutional Management Department and the Sport Management/Sport Management Interest Program moved to the Alfred Lerner College of Business and Economics in 2008 and 2010, respectively.

<sup>3</sup> The Geology Department and the Geography Department moved to the College of Earth, Ocean & Environment in 2006 and 2009, respectively.

<sup>4</sup> The Computer Science Department and the Energy and Environmental Policy Program moved to the College of Engineering in 2010.

<sup>5</sup> The Physical Therapy Department moved to the College of Health Sciences in 2009.

Note: Graduation terms defined by federal IPEDS standards (July 1 through June 30).

Source: Office of Institutional Research/UDEW

**EMPLOYMENT AND EDUCATIONAL STATUS OF  
BACCALAUREATES BY CURRICULUM GROUP  
CLASS OF 2009**

Curriculum Group	Number in Class <sup>1</sup>	Number Who Received Survey	Number of Respondents <sup>2</sup> n	Number of Respondents <sup>2</sup> %	Full-Time Employment %	Part-Time Employment %	Pursuing Further Education %	Still Seeking Employment %
Agriculture & Natural Resources	114	113	65	57.5	40.0	21.5	35.4	1.5
Arts & Sciences								
Humanities	503	500	67	13.4	59.7	11.9	14.9	11.9
Social Sciences	745	733	108	14.7	49.1	13.9	25.0	8.3
Life & Health Sciences	142	142	18	12.7	44.4	11.1	38.9	5.6
Physical Sciences	163	161	23	14.3	47.8	4.3	30.4	17.4
Business & Economics	693	686	229	33.4	75.5	10.0	7.4	2.6
Earth, Ocean, & Environment	22	22	3	13.6	33.3	--	33.3	33.3
Education & Public Policy	316	315	191	60.6	52.9	13.1	26.2	2.1
Engineering	205	205	157	76.6	67.5	1.9	29.3	--
Health Sciences	434	430	83	19.3	60.2	13.3	21.7	2.4
<b>2009 University Total<sup>3</sup></b>	<b>3,337</b>	<b>3,307</b>	<b>944</b>	<b>28.5</b>	<b>60.3</b>	<b>10.8</b>	<b>21.8</b>	<b>3.8</b>

<sup>1</sup> The number in class is based on expected graduates.

<sup>2</sup> The number of respondents includes only baccalaureate respondents with valid data on Career Plans Survey, question A for the reported responses on this table.

<sup>3</sup> Twenty-four (2.5%) of the 941 respondents indicated they are not seeking work. University total includes all curriculum groups.

Note: Percentages may not total to 100.0 because of rounding.

Source: Data obtained through the Bank of America Career Services Center and the Office of Institutional Research Career Plans Survey



**EMPLOYEES BY ETHNICITY AND EEO CATEGORY**  
*Fall 2006 Through Fall 2010*

EEO-6 CATEGORY		2006	2007	2008	2009	2010
<b>Executive/ Administrative/ Managerial</b>	<b>Full-Time - Total</b>	<b>376</b>	<b>379</b>	<b>387</b>	<b>393</b>	<b>384</b>
	White	341	346	352	358	350
	African-American	26	23	22	22	21
	Hispanic	2	3	5	5	5
	Asian	4	4	5	4	5
	Native American	3	3	3	3	1
	Two or More Races	--	--	--	--	1
	Unknown	0	0	0	1	1
	<b>Part-Time - Total</b>	<b>14</b>	<b>10</b>	<b>10</b>	<b>11</b>	<b>9</b>
	White	14	10	10	11	8
	African-American	0	0	0	0	0
	Hispanic	0	0	0	0	0
	Asian	0	0	0	0	1
	Native American	0	0	0	0	0
	Two or More Races	--	--	--	--	0
Unknown	0	0	0	0	0	
<b>Faculty</b>	<b>Full-Time - Total</b>	<b>1,117</b>	<b>1,117</b>	<b>1,117</b>	<b>1,111</b>	<b>1,126</b>
	White	938	934	936	915	921
	African-American	51	49	53	54	48
	Hispanic	27	30	27	30	29
	Asian	98	101	98	108	118
	Native American	3	3	3	3	4
	Two or More Races	--	--	--	--	2
	Unknown	0	0	0	1	4
	<b>Part-Time - Total</b>	<b>33</b>	<b>32</b>	<b>36</b>	<b>44</b>	<b>41</b>
	White	28	23	26	31	26
	African-American	2	4	3	3	3
	Hispanic	0	0	2	4	5
	Asian	3	5	5	6	7
	Native American	0	0	0	0	0
	Two or More Races	--	--	--	--	0
Unknown	0	0	0	0	0	
<b>Professional</b>	<b>Full-Time - Total</b>	<b>953</b>	<b>971</b>	<b>967</b>	<b>1,010</b>	<b>1,085</b>
	White	777	786	782	805	855
	African-American	79	88	96	93	97
	Hispanic	13	17	20	24	30
	Asian	77	76	65	80	85
	Native American	4	4	4	7	7
	Two or More Races	--	--	--	--	1
	Unknown	3	0	0	1	10
	<b>Part-Time - Total</b>	<b>90</b>	<b>94</b>	<b>88</b>	<b>93</b>	<b>101</b>
	White	78	80	73	77	88
	African-American	3	7	5	6	4
	Hispanic	1	1	1	1	0
	Asian	8	6	9	9	8
	Native American	0	0	0	0	0
	Two or More Races	--	--	--	--	0
Unknown	0	0	0	0	1	

## EMPLOYEES BY ETHNICITY AND EEO CATEGORY (Continued)

EEO-6 CATEGORY		2006	2007	2008	2009	2010
<b>Secretarial/ Clerical</b>	<b>Full-Time - Total</b>	<b>616</b>	<b>610</b>	<b>618</b>	<b>607</b>	<b>589</b>
	White	534	538	545	537	515
	African-American	57	55	57	53	54
	Hispanic	12	7	6	6	7
	Asian	5	6	6	6	6
	Native American	6	4	4	4	2
	Two or More Races	--	--	--	--	2
	Unknown	2	0	0	1	3
	<b>Part-Time - Total</b>	<b>67</b>	<b>63</b>	<b>63</b>	<b>51</b>	<b>54</b>
	White	62	58	58	47	48
	African-American	5	5	4	4	4
	Hispanic	0	0	1	0	2
	Asian	0	0	0	0	0
	Native American	0	0	0	0	0
Two or More Races	--	--	--	--	0	
Unknown	0	0	0	0	0	
<b>Technical/ Paraprofessional</b>	<b>Full-Time - Total</b>	<b>120</b>	<b>127</b>	<b>128</b>	<b>136</b>	<b>133</b>
	White	98	103	104	109	107
	African-American	13	15	14	16	15
	Hispanic	2	2	2	2	1
	Asian	4	4	5	6	7
	Native American	3	3	3	3	3
	Two or More Races	--	--	--	--	0
	Unknown	0	0	0	0	0
	<b>Part-Time - Total</b>	<b>17</b>	<b>11</b>	<b>20</b>	<b>20</b>	<b>22</b>
	White	8	6	14	15	16
	African-American	5	3	4	3	4
	Hispanic	0	0	0	0	0
	Asian	4	2	2	2	2
	Native American	0	0	0	0	0
Two or More Races	--	--	--	--	0	
Unknown	0	0	0	0	0	
<b>Skilled Craft</b>	<b>Full-Time - Total</b>	<b>143</b>	<b>145</b>	<b>146</b>	<b>146</b>	<b>145</b>
	White	124	124	123	122	124
	African-American	12	13	14	15	14
	Hispanic	5	5	6	6	5
	Asian	1	1	1	1	0
	Native American	1	2	2	2	2
	Two or More Races	--	--	--	--	0
	Unknown	0	0	0	0	0
	<b>Part-Time - Total</b>	<b>0</b>	<b>0</b>	<b>0</b>	<b>0</b>	<b>0</b>
	White	0	0	0	0	0
	African-American	0	0	0	0	0
	Hispanic	0	0	0	0	0
	Asian	0	0	0	0	0
	Native American	0	0	0	0	0
Two or More Races	--	--	--	--	0	
Unknown	0	0	0	0	0	

**EMPLOYEES BY ETHNICITY AND EEO CATEGORY  
(Continued)**

EEO-6 CATEGORY		2006	2007	2008	2009	2010
<b>Service/ Maintenance</b>	<b>Full-Time - Total</b>	<b>445</b>	<b>435</b>	<b>445</b>	<b>443</b>	<b>436</b>
	White	251	251	258	257	255
	African-American	147	135	132	133	130
	Hispanic	24	28	29	27	26
	Asian	16	15	20	20	20
	Native American	7	6	6	6	5
	Two or More Races	--	--	--	--	0
	Unknown	0	0	0	0	0
	<b>Part-Time - Total</b>	<b>11</b>	<b>10</b>	<b>11</b>	<b>10</b>	<b>9</b>
	White	10	10	11	9	7
	African-American	0	0	0	0	0
	Hispanic	1	0	0	0	1
	Asian	0	0	0	0	0
	Native American	0	0	0	0	0
Two or More Races	--	--	--	--	0	
Unknown	0	0	0	1	1	
<b>ALL EMPLOYEES</b>	<b>Full-Time - Total</b>	<b>3,770</b>	<b>3,784</b>	<b>3,808</b>	<b>3,846</b>	<b>3,898</b>
	White	3,063	3,082	3,100	3,103	3,127
	African-American	385	378	388	386	379
	Hispanic	85	92	95	100	103
	Asian	205	207	200	225	241
	Native American	27	25	25	28	24
	Two or More Races	--	--	--	--	6
	Unknown	5	0	0	4	18
	<b>Part-Time - Total</b>	<b>232</b>	<b>220</b>	<b>228</b>	<b>229</b>	<b>236</b>
	White	200	187	192	190	193
	African-American	15	19	16	16	15
	Hispanic	2	1	4	5	8
	Asian	15	13	16	17	18
	Native American	0	0	0	0	0
Two or More Races	--	--	--	--	0	
Unknown	0	0	0	1	2	
<b>TOTAL</b>	<b>4,002</b>	<b>4,004</b>	<b>4,036</b>	<b>4,075</b>	<b>4,134</b>	

NOTE: In Fall 2010 a new ethnic reporting category "Two or More Races" was introduced due to a change in Federal requirements.

Source: Office of Institutional Research

**FULL-TIME EMPLOYEES BY GENDER**  
*Fall 2006 Through Fall 2010*

	2006	2007	2008	2009	2010
<b>Faculty</b>	<b>1,117</b>	<b>1,117</b>	<b>1,117</b>	<b>1,111</b>	<b>1,126</b>
Male	693	681	686	674	688
Female	424	436	431	437	438
<b>Professionals (Includes Chairpersons)</b>	<b>1,329</b>	<b>1,350</b>	<b>1,354</b>	<b>1,403</b>	<b>1,469</b>
Male	637	646	637	651	666
Female	692	704	717	752	803
<b>Salaried Staff/Hourly</b>	<b>1,324</b>	<b>1,317</b>	<b>1,337</b>	<b>1,332</b>	<b>1,303</b>
Male	499	497	493	498	500
Female	825	820	844	834	803
<b>TOTAL</b>	<b>3,770</b>	<b>3,784</b>	<b>3,808</b>	<b>3,846</b>	<b>3,898</b>
Male	<b>1,829</b>	<b>1,824</b>	<b>1,816</b>	<b>1,823</b>	<b>1,854</b>
Female	<b>1,941</b>	<b>1,960</b>	<b>1,992</b>	<b>2,023</b>	<b>2,044</b>

Source: Office of Institutional Research

**NUMBER OF FACULTY BY RANK AND TENURE STATUS  
Fall 2006 Through Fall 2010**

	2006			2007			2008			2009			2010		
	Tenured/ Track	Non- Tenure	Total	Tenured/ Track	Non- Tenure	Total	Tenured/ Track	Non- Tenure	Total	Tenured/ Track	Non- Tenure	Total	Tenured/ Track	Non- Tenure	Total
<b>Full-Time</b>															
Professor	358	9	367	367	11	378	370	12	382	368	11	379	367	12	379
Associate Professor	302	24	326	297	25	322	301	27	328	310	32	342	312	38	350
Assistant Professor	199	105	304	186	112	298	180	122	302	162	124	286	162	128	290
Instructor	0	119	119	0	118	118	0	105	105	0	104	104	0	107	107
Lecturer	0	1	1	0	1	1	0	0	0	0	0	0	0	0	0
<b>Total Full-Time Faculty</b>	<b>859</b>	<b>258</b>	<b>1,117</b>	<b>850</b>	<b>267</b>	<b>1,117</b>	<b>851</b>	<b>266</b>	<b>1,117</b>	<b>840</b>	<b>271</b>	<b>1,111</b>	<b>841</b>	<b>285</b>	<b>1,126</b>
<b>Total Part-Time Faculty</b>	<b>4</b>	<b>29</b>	<b>33</b>	<b>4</b>	<b>28</b>	<b>32</b>	<b>6</b>	<b>30</b>	<b>36</b>	<b>3</b>	<b>41</b>	<b>44</b>	<b>4</b>	<b>37</b>	<b>41</b>
<b>Grand Total</b>	<b>863</b>	<b>287</b>	<b>1,150</b>	<b>854</b>	<b>295</b>	<b>1,149</b>	<b>857</b>	<b>296</b>	<b>1,153</b>	<b>843</b>	<b>312</b>	<b>1,155</b>	<b>845</b>	<b>322</b>	<b>1,167</b>

*Note: Data include regular faculty (active or on sabbatical leave) at the Newark Campus and the Associate in Arts Program. Visiting faculty are excluded.*

Source: Office of Institutional Research

**TENURE STATUS AMONG FULL-TIME TENURE TRACK FACULTY**  
**Fall 2006 Through Fall 2010**

	2006		2007		2008		2009		2010	
	Tenured/ Eligible	% Tenured	Tenured/ Eligible	% Tenured	Tenured/ Eligible	% Tenured	Tenured/ Eligible	% Tenured	Tenured/ Eligible	% Tenured
<b>Professor</b>	358/358	100.0	367/367	100.0	370/370	100.0	368/368	100.0	367/367	100.0
<b>Associate Professor</b>	296/302	98.0	293/297	98.7	298/301	99.0	308/310	99.4	307/312	98.4
<b>Assistant Professor</b>	0/199	0.0	0/186	0.0	0/180	0.0	0/162	0.0	0/162	0.0
<b>Total</b>	<b>654/859</b>	<b>76.1</b>	<b>660/850</b>	<b>77.6</b>	<b>668/851</b>	<b>78.5</b>	<b>676/840</b>	<b>80.5</b>	<b>674/841</b>	<b>80.1</b>

*Key: % Tenured = # Tenured/# Eligible \* 100. University policy is to grant tenure at time of promotion to Associate Professor.*

*If promotion is not achieved, faculty member is terminated, so there are no tenured faculty at the Assistant Professor level.*

*Note: Counts include regular faculty (active or on sabbatical leave) on the Newark campus and the Associate in Arts Program. Visiting faculty are excluded.*

Source: Office of Institutional Research

**AVERAGE TOTAL COMPENSATION OF FULL-TIME FACULTY BY RANK**  
*Academic Year 2006-07 Through 2010-11*

	2006-07		2007-08		2008-09		2009-10		2010-11	
	Average	Increase	Average	Increase	Average	Increase	Average	Increase	Average	Increase
	Comp.	From	Comp.	From	Comp.	From	Comp.	From	Comp.	From
	\$	Previous	\$	Previous	\$	Previous	\$	Previous	\$	Previous
		Year		Year		Year		Year		Year
		%		%		%		%		%
<b>Professor</b>	154,733	4.9	160,932	4.0	165,800	3.1	171,414	3.4	175,694	2.5
<b>Associate Professor</b>	109,358	3.0	112,828	3.2	116,423	3.2	120,879	3.8	122,973	1.7
<b>Assistant Professor</b>	90,065	4.7	93,262	3.5	99,072	6.2	101,362	2.3	104,904	3.5
<b>Instructor</b>	73,193	5.3	76,568	4.6	80,266	4.5	83,774	4.4	85,992	2.6

*Note: Includes regular full-time faculty and chairpersons.*

*Total compensation refers to 9-month equivalent salary plus fringe benefits.*

Source: Office of Institutional Research/AAUP Annual Survey of Faculty Compensation

**FULL-TIME EMPLOYEES' SALARY  
PRINCIPAL SOURCE OF FUNDING**  
*Fall 2006 Through Fall 2010*

	2006	2007	2008	2009	2010
<b>Faculty</b>	<b>1,117</b>	<b>1,117</b>	<b>1,117</b>	<b>1,111</b>	<b>1,126</b>
Paid Principally from Unrestricted Funds	1,072	1,067	1,062	1,061	1,075
% of Total	96.0%	95.5%	95.1%	95.5%	95.5%
<b>Professionals (Includes Chairpersons)</b>	<b>1,329</b>	<b>1,350</b>	<b>1,354</b>	<b>1,403</b>	<b>1,469</b>
Paid Principally from Unrestricted Funds	1,133	1,166	1,196	1,218	1,279
% of Total	85.3%	86.4%	88.3%	86.8%	87.1%
<b>Salaried Staff/Hourly</b>	<b>1,324</b>	<b>1,317</b>	<b>1,337</b>	<b>1,332</b>	<b>1,303</b>
Paid Principally from Unrestricted Funds	1,234	1,226	1,254	1,264	1,232
% of Total	93.2%	93.1%	93.8%	94.9%	94.5%
<b>TOTAL</b>	<b>3,770</b>	<b>3,784</b>	<b>3,808</b>	<b>3,846</b>	<b>3,898</b>
Paid Principally from Unrestricted Funds	<b>3,439</b>	<b>3,459</b>	<b>3,512</b>	<b>3,543</b>	<b>3,586</b>
% of Total	<b>91.2%</b>	<b>91.4%</b>	<b>92.2%</b>	<b>92.1%</b>	<b>92.0%</b>

*Note: Unrestricted funds represent basic, allocated, and self supporting fund types.*

Source: Office of Institutional Research



**STATEMENT OF OPERATING ACTIVITIES**  
**FY 06 Through FY 10**  
**(Thousands of Dollars)**

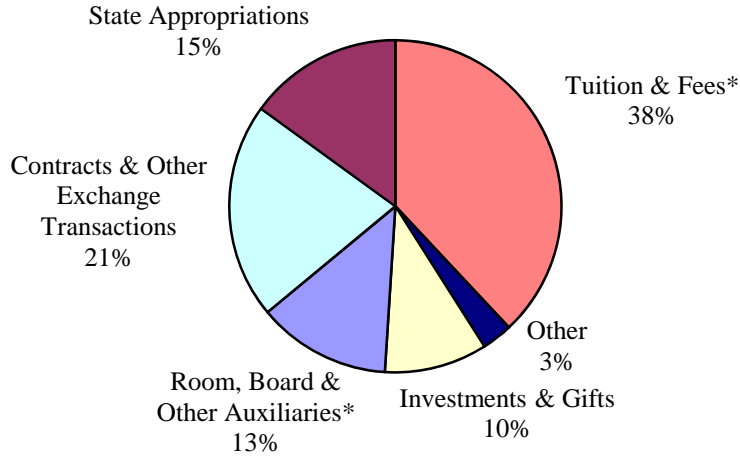
	FY 06	FY 07	FY 08	FY 09	FY 10
	\$	\$	\$	\$	\$
<b>OPERATING REVENUE:</b>					
Tuition and fees, net of scholarship & fellowship allowance <sup>(1)</sup>	210,971	219,900	235,398	260,897	296,648
State operating appropriations	115,666	122,828	127,166	126,744	117,873
Contracts & other exchange transactions	124,168	129,586	136,432	135,371	165,951
Room, board & other auxiliaries, net of scholarship & fellowship allowance <sup>(1)</sup>	77,568	81,818	88,072	92,929	99,519
Investments and gifts	70,046	78,031	83,526	84,333	73,020
Other	18,735	21,888	21,792	28,207	25,390
<b>Total operating revenues and support</b>	<b>617,154</b>	<b>654,051</b>	<b>692,386</b>	<b>728,481</b>	<b>778,401</b>
<i>(1) Scholarship and fellowship allowance</i>					
<b>OPERATING EXPENSES AND TRANSFERS:</b>					
Instruction & academic support	316,456	334,193	350,736	364,465	373,902
Sponsored activities	136,555	143,917	150,691	154,677	166,845
Student services	20,725	22,202	24,392	26,251	27,494
Student aid	4,846	6,144	5,722	5,827	4,805
Institutional	51,858	57,985	60,451	63,946	69,465
Room, board & other auxiliaries	73,105	76,209	82,999	86,938	94,955
Transfers & other	13,609	13,401	17,395	26,377	40,935
<b>Total operating expenses and transfers</b>	<b>617,154</b>	<b>654,051</b>	<b>692,386</b>	<b>728,481</b>	<b>778,401</b>

Source: Assistant Vice President, University Finance

# OPERATING REVENUE, EXPENSES AND TRANSFERS

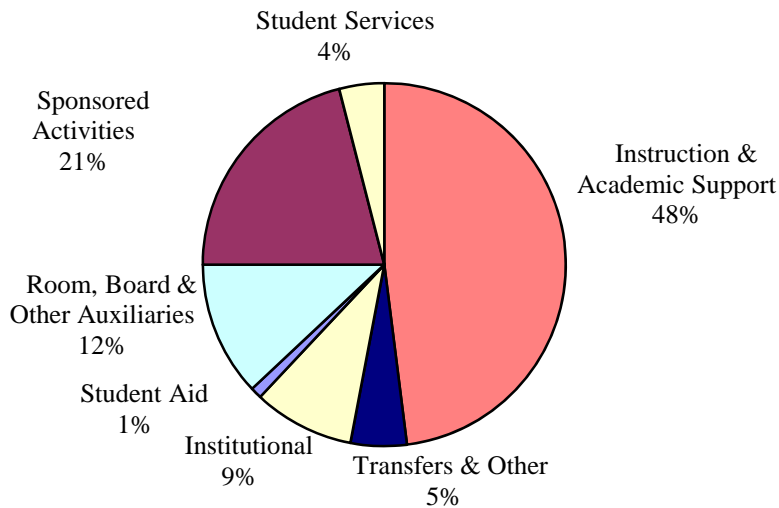
## *Fiscal Year 2010*

### REVENUE (\$778.4 millions)



\* Net of Scholarship & Fellowship Allowance

### EXPENSES AND TRANSFERS (\$778.4 millions)



Source: Assistant Vice President, University Finance

**CHANGE IN NET ASSETS**  
**FY 06 Through FY 10**  
**(Thousands of Dollars)**

	FY 06	FY 07	FY 08	FY 09	FY 10
	\$	\$	\$	\$	\$
Net assets at beginning of year	1,665,416	1,830,179	2,000,209	1,934,074	1,614,737
Change in net assets:					
Operating transfers	13,507	14,414	18,797	27,601	41,565
Nonoperating activities:					
Net realized and unrealized gains (losses)	130,388	174,134	(89,844)	(328,939)	73,311
Contributions for endowment and buildings	28,606	14,434	8,985	8,308	22,107
State capital appropriations	7,000	4,600	3,500	-	900
Net change in asset retirement obligation liability	-	(3,093)	(2,972)	(1,256)	606
Effect of change in adoption of SFAS No. 158	-	(30,398)	-	-	-
Cumulative effect of change in accounting principle	(4,440)	-	-	-	-
Net endowment income and other	(10,298)	(4,061)	(4,601)	(25,051)	(33,586)
Total nonoperating activities	<u>151,256</u>	<u>155,616</u>	<u>(84,932)</u>	<u>(346,938)</u>	<u>63,338</u>
Net assets at end of year	<u>1,830,179</u>	<u>2,000,209</u>	<u>1,934,074</u>	<u>1,614,737</u>	<u>1,719,640</u>
Percent change from prior year	10%	9%	-3%	-17%	6%
Net assets:					
Unrestricted	1,420,511	1,541,474	1,031,166	910,676	958,025
Temporarily restricted	122,034	152,997	593,322	410,205	454,692
Permanently restricted	<u>287,634</u>	<u>305,738</u>	<u>309,586</u>	<u>293,856</u>	<u>306,923</u>
Total net assets	<u>1,830,179</u>	<u>2,000,209</u>	<u>1,934,074</u>	<u>1,614,737</u>	<u>1,719,640</u>
Endowment and funds invested as endowment:					
Market value	1,223,200	1,397,500	1,340,100	1,008,400	1,091,700
Percent change from prior year	14%	14%	-4%	-25%	8%

Source: Assistant Vice President, University Finance

**EXTERNALLY SPONSORED ACTIVITIES**  
(Thousands of Dollars)

College / Unit	FY 2010				FY 2009 Total \$	Percent Change %
	Instruction & Dept. Rsch. \$	Sponsored Research \$	Public Service \$	Total \$		
<b>EXTERNALLY SPONSORED ACTIVITIES:</b>						
Agriculture & Natural Resources	2,570	13,456	7,028	23,054	22,073	4.4
Arts & Sciences	9,432	29,553	1,727	40,712	37,351	9.0
Business & Economics	3,447	127	1,947	5,521	5,055	9.2
Earth, Ocean, & Environment	784	13,436	1,068	15,288	12,437	22.9
Education & Public Policy	6,531	5,041	13,517	25,089	22,382	12.1
Engineering	2,972	44,030	623	47,625	41,277	15.4
Health Sciences	1,368	5,130	317	6,815	6,756	0.9
Institute for Global Studies	386	60	771	1,217	875	39.1
Delaware Biotechnology Institute	806	7,059	1	7,866	7,902	(0.5)
Institute of Energy Conversion	92	2,627	0	2,719	1,626	67.2
Other	2,745	1,073	1,394	5,212	5,490	(5.1)
<b>TOTAL EXTERNALLY SPONSORED ACTIVITIES</b>	<b>31,133</b>	<b>121,592</b>	<b>28,393</b>	<b>181,118</b>	<b>163,224</b>	<b>11.0</b>

Source: Assistant Vice President, University Finance

**UNDERGRADUATE TUITION, FEES,  
ROOM AND BOARD CHARGES PER YEAR  
AND THEIR ANNUAL RATE OF INCREASE  
2000-01 Through 2010-11**

Year	TUITION AND FEES <sup>1</sup>				BOARD <sup>2</sup>		TRADITIONAL DOUBLE ROOM	
	Resident		Nonresident		\$	%	\$	%
	\$	Incr.	\$	Incr.				
00-01	5,004	3.0	13,754	4.0	2,392	3.0	2,920	3.9
01-02	5,290	5.7	14,380	4.6	2,470	3.3	3,064	4.9
02-03 <sup>3</sup>	5,760	8.9	15,290	6.3	2,590	4.9	3,232	5.5
03-04	6,498	12.8	16,028	4.8	2,690	3.9	3,428	6.1
04-05	6,954	7.0	16,640	3.8	2,790	3.7	3,668	7.0
05-06	7,318	5.2	17,474	5.0	2,900	3.9	3,924	7.0
06-07	7,740	5.8	18,450	5.6	3,030	4.5	4,336	10.5
07-08	8,150	5.3	19,400	5.1	3,200	5.6	4,748	9.5
08-09	8,646	6.1	21,126	8.9	3,350	4.7	5,128	8.0
09-10	9,486	9.7	23,186	9.8	3,600	7.5	5,466	6.6
<b>10-11</b>	<b>10,208</b>	<b>7.6</b>	<b>25,408</b>	<b>9.6</b>	<b>3,810</b>	<b>5.8</b>	<b>5,826</b>	<b>6.6</b>

<sup>1</sup> Fall 2010 fees include: Student Health - \$486; Student Union - \$232; and Comprehensive Fee - \$450.

<sup>2</sup> The board charge reflects the largest number of meals available (19 per week).

<sup>3</sup> 2002-03 tuition includes a \$120 mid-year increase for the Spring semester.

Source: Office of Institutional Research

**UNDERGRADUATE STUDENT CHARGES  
AT THE UNIVERSITY OF DELAWARE  
AND ADMISSIONS COMPETITORS**

	TUITION & FEES									
	Resident					Nonresident				
	06-07	07-08	08-09	09-10	10-11	06-07	07-08	08-09	09-10	10-11
<b>Univ. of Delaware</b>	<b>7,740</b>	<b>8,150</b>	<b>8,646</b>	<b>9,486</b>	<b>10,208</b>	<b>18,450</b>	<b>19,400</b>	<b>21,126</b>	<b>23,186</b>	<b>25,408</b>
James Madison Univ.	6,290	6,666	6,964	7,244	7,860	16,236	17,386	18,458	19,016	20,114
Penn State Univ.	12,164	12,844	13,706	14,416	15,250	22,712	23,712	24,940	25,946	27,114
Rutgers Univ.	9,958	10,686	11,540	11,886	12,581	18,463	19,854	21,488	22,518	24,043
Univ. of Maryland	8,046	7,969	8,005	8,053	8,416	21,485	22,208	23,076	23,989	24,831
Univ. of Virginia	8,035	8,690	9,490	9,862	10,828	25,959	27,705	29,572	31,420	33,102
Va. Polytech. Inst.	6,973	7,397	8,198	8,605	9,459	18,929	19,605	20,655	21,488	22,648

	ROOM & BOARD									
	Resident					Nonresident				
	06-07	07-08	08-09	09-10	10-11	06-07	07-08	08-09	09-10	10-11
<b>Univ. of Delaware</b>	<b>7,366</b>	<b>7,948</b>	<b>8,478</b>	<b>9,066</b>	<b>9,636</b>	<b>7,366</b>	<b>7,948</b>	<b>8,478</b>	<b>9,066</b>	<b>9,636</b>
James Madison Univ.	6,756	7,108	7,458	7,690	8,020	6,756	7,108	7,458	7,690	8,020
Penn State Univ.	7,400	7,750	8,270	8,790	9,030	7,400	7,750	8,270	8,790	9,030
Rutgers Univ.	9,312	9,762	10,232	10,676	11,216	9,312	9,762	10,232	10,676	11,216
Univ. of Maryland	8,562	8,854	9,109	9,377	9,599	8,562	8,854	9,109	9,377	9,599
Univ. of Virginia	6,909	7,435	7,820	8,290	8,652	6,909	7,435	7,820	8,290	8,652
Va. Polytech. Inst.	4,766	5,106	5,476	5,824	6,290	4,766	5,106	5,476	5,824	6,290

	TOTAL INSTITUTIONAL COSTS									
	Resident					Nonresident				
	06-07	07-08	08-09	09-10	10-11	06-07	07-08	08-09	09-10	10-11
<b>Univ. of Delaware</b>	<b>15,106</b>	<b>16,098</b>	<b>17,124</b>	<b>18,552</b>	<b>19,844</b>	<b>25,816</b>	<b>27,348</b>	<b>29,604</b>	<b>32,252</b>	<b>35,044</b>
James Madison Univ.	13,046	13,774	14,422	14,934	15,880	22,992	24,494	25,916	26,706	28,134
Penn State Univ.	19,564	20,594	21,976	23,206	24,280	30,112	31,462	33,210	34,736	36,144
Rutgers Univ.	19,270	20,448	21,772	22,562	23,797	27,775	29,616	31,720	33,194	35,259
Univ. of Maryland	16,608	16,823	17,114	17,430	18,015	30,047	31,062	32,185	33,366	34,430
Univ. of Virginia	14,944	16,125	17,310	18,152	19,480	32,868	35,140	37,392	39,710	41,754
Va. Polytech. Inst.	11,739	12,503	13,674	14,429	15,749	23,695	24,711	26,131	27,312	28,938

Source: Data obtained through the Office of Institutional Research Survey of Undergraduate Charges

## BUILDING INVENTORY

	Newark	All Sites
Academic		
Major Classrooms & Laboratories	48	54
Farm/Auxiliary	86	130
Other Special Use	33	39
Physical Education	7	7
<b>Total Academic</b>	<b>174</b>	<b>230</b>
Student Residence and Service		
Residence Halls (Major Residence Hall complexes = 11)	40	44
Other Housing	65	95
Dining Halls	5	5
Student Activities	18	18
<b>Total Student Residence &amp; Service</b>	<b>128</b>	<b>162</b>
Administrative		
General Services	25	29
Plant Operations & Services	20	23
<b>Total Administrative</b>	<b>45</b>	<b>52</b>
<b>TOTAL BUILDINGS</b>	<b>347</b>	<b>444</b>

Source: General Accounting  
(Data as of September 1, 2010)

## LAND INVENTORY

<b>ACREAGE OWNED</b>	
New Castle County	
Newark Campus Total	969
Wilmington	34
Other	168
<b>Total New Castle County<sup>1</sup></b>	<b>1,171</b>
Kent County	
Dover	5
Clayton	297
<b>Total Kent County</b>	<b>302</b>
Sussex County	
Georgetown Substation	347
Rehoboth	141
Lewes	69
Indian River	10
<b>Total Sussex County</b>	<b>567</b>
<b>TOTAL ACREAGE<sup>1</sup></b>	<b>2,040</b>

<sup>1</sup> Exclusive of the 272 acres owned by 1743 Holdings, LLC for the former Chrysler Site.

Source: General Accounting  
(Data as of September 1, 2010)



## UNIVERSITY LIBRARY

### Facilities and Services

The University of Delaware Library includes the Morris Library, where the main collection is housed, three branch libraries located in Newark, the Agriculture Library, the Chemistry Library, and the Physics Library and a fourth branch library, the Marine Studies Library in Lewes, Delaware.

The collections of the Library parallel the University's academic interests and support all disciplines. Books, periodicals, eBooks, eJournals, databases, microforms, government publications, maps, manuscripts, media, software and Internet access provide a major academic resource for the University of Delaware, the surrounding community, the State of Delaware and the nation.

The Library is a depository library for U.S. government publications, a patent depository for U.S. patents and a repository for State of Delaware publications. Library staff members provide a wide range of services including reference assistance, circulation, interlibrary loan, instructional programs, assistance to users with disabilities and assistance to faculty, staff and students in the Student Multimedia Design Center.

The Morris Library, the main library where the main collection is housed, seats over 2,500 persons. The Library is a member of the Association of Research Libraries, the Center for Research Libraries, CIRLA (the Chesapeake Information and Research Library Alliance), and LYRASIS through which it is connected online to OCLC, the Online Computer Library Center.

For Library hours, call 302-831-BOOK or check the Library Website at:  
[www.udel.edu/library](http://www.udel.edu/library)

### Size of Collections (2009/2010)

Books and bound periodicals.....	over 2,800,000
Microforms.....	over 3,400,000
Databases (titles in Databases list).....	over 300
Electronic and print journals including newspapers to which the Library provides access.....	over 31,000
Other resources (DVDs, maps, etc.).....	over 590,000
Linear feet of manuscripts and archives.....	over 5,800
Subject guides to Internet resources.....	over 120

### Use Statistics (2009/2010)

Items loaned.....	over 400,000
Items used on site.....	over 109,000
Individuals entering the Morris Library.....	over 900,000
Virtual visits on Library Website.....	over 1,500,000
Individuals who received user education.....	over 8,000

### Electronic Library Resources

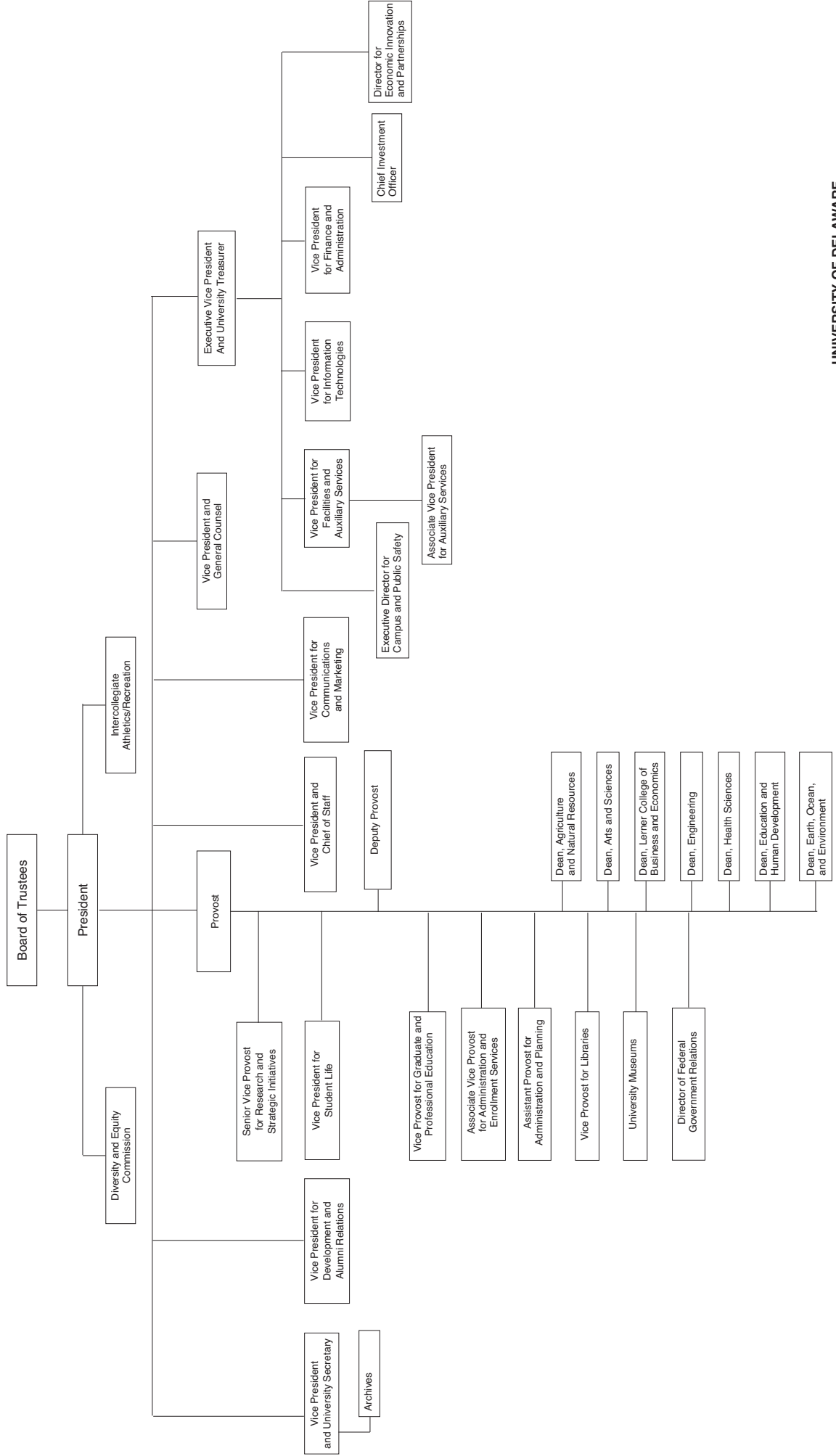
The University of Delaware Library provides online electronic access to networked and digital information including: journal article references and abstracts; full-text electronic articles; a full-text encyclopedia; government information; thousands of electronic journals; maps and many other items. Databases provide access to more than 300 networked databases for University of Delaware faculty, students, and staff. The Library Website is accessible at [www.udel.edu/library](http://www.udel.edu/library).

DELCAT is the University of Delaware Library online catalog and contains information about the library collection and also provides links to electronic journals and other resources. DELCAT may be accessed from anywhere in the world via the web.

The Library Website serves as a gateway research tool and provides gateway access to electronic resources on the web including electronic access to resources that are locally licensed for University of Delaware faculty, students and staff only. The Library Website is also available from the University of Delaware Website [www.udel.edu](http://www.udel.edu).

The University of Delaware Library was one of the first libraries in the nation to implement WorldCat Local, the world's largest network of library-based content and services. WorldCat Local encompasses the holdings of over 10,000 libraries across the world, including the University of Delaware Library. In a single search, users can easily identify a broad array of high-quality research materials. With a simple click, users can change the default interface to German, Spanish, French, Dutch or Chinese. WorldCat Local was enthusiastically received by students.

The Morris Library provides seating for more than 2,500 persons; wireless access in most areas; special purpose space for computer-based systems; more than 275 computer workstations accessible to users; more than 200 laptop connections for University of Delaware users to connect personal laptops (including all graduate student carrels); the Student Multimedia Design Center; a current periodical reading room; self-service photocopiers; microform reader/printers including a digital microform workstation; a large reserve reading room; small research studies for which faculty may request use; a GIS workstation; special equipment and areas to assist users with disabilities; a media area and viewing room; small group study rooms for student use; a handsome Special Collections area including an exhibition gallery and a reading room with a controlled environmental system for rare materials; and many other areas and services.



# UNIVERSITY OF DELAWARE REGIONAL, NATIONAL AND SPECIALIZED ACCREDITORS

Accreditation Board for Engineering and Technology  
Accreditation Association for Ambulatory Health Care, Inc.  
Administration on Developmental Disabilities  
American Association of Health Education  
American Association of School Librarians  
American Chemical Society's Committee on Professional Training  
American Council on the Teaching of Foreign Languages  
American Dietetic Association  
American Library Association  
American Physical Therapy Association  
American Psychological Association  
Association for Childhood Education International  
Association for Educational Communications and Technology  
Association of Small Business Development Centers  
Association of University Centers on Disabilities  
Association to Advance Collegiate Schools of Business International  
Commission on Accreditation of Physical Therapy Education  
Commission on Collegiate Nursing Education  
Commission on English Language Program Accreditation  
Commission on the Accreditation of Athletic Training Education Programs  
Commission on the Accreditation for Dietetics Education (CADE)  
Council for Exceptional Children  
Council for Standards for Human Services Education

Educational Leadership Constituent Council  
Engineering Accreditation Commission of Accreditation Board for Engineering and Technology  
Institute of Food Technologists  
International Association of Counseling Services, Inc.  
International Reading Association  
Joint Review Committee for Athletic Training  
Middle States Commission on Higher Education  
National Accrediting Agency for Clinical Laboratory Sciences  
National Association for Sport and Physical Education  
National Association for the Education of Young Children  
National Association of School Psychologists  
National Association of Schools of Music  
National Association of Schools of Public Affairs and Administration  
National Council for Accreditation of Teacher Education  
National Council for the Social Studies  
National Council of Teachers of English  
National Council of Teachers of Mathematics  
National League for Nursing Accrediting Commission  
National Science Teachers Association  
Psychological Clinical Science Accreditation System (PCSAS)  
Teachers of English to Speakers of Other Languages, Inc.  
Technology Accreditation Commission of Accreditation Board for Engineering and Technology

AN EQUAL OPPORTUNITY/AFFIRMATIVE ACTION EMPLOYER—The University of Delaware is committed to assuring equal opportunity to all persons and does not discriminate on the basis of race, color, gender, religion, ancestry, national origin, sexual orientation, veteran status, age, or disability in its educational programs, activities, admissions, or employment practices as required by Title IX of the Education Amendments of 1972, Title VI of the Civil Rights Act of 1964, the Rehabilitation Act of 1973, the Americans with Disabilities Act, other applicable statutes and University policy. Inquiries concerning these statutes and information regarding campus accessibility should be referred to the Affirmative Action Officer, 305 Hullahen Hall, (302) 831-2835 (voice), (302) 831-4563 (TDD).