

2009-2010

Facts & Figures



OFFICE OF INSTITUTIONAL RESEARCH





FACTS & FIGURES

2009 – 2010

Office of Institutional Research

Michael F. Middaugh

Associate Provost for Institutional Effectiveness

middaugh@udel.edu

Heather A. Kelly

Director

hkelly@udel.edu

Allison M. Walters

Assistant Director

awalters@udel.edu

Kathleen F. Collison

Data Warehouse Manager

kafc@udel.edu

Denise M. Lindsey

Institutional Research Analyst

dlindsey@udel.edu

Margaret F. Roldan

Institutional Research Analyst

mfroldan@udel.edu

Lynne R. Govatos

Institutional Research Analyst

lgovatos@udel.edu

Qin Zhang

Institutional Research Analyst

qzhang@udel.edu

Patricia E. Kelly

Records Technician

pek@udel.edu

Telephone: (302) 831-2021 Fax: (302) 831-8530

E-mail: irp@udel.edu

UD Homepage on the Internet: <http://www.udel.edu/>

Institutional Research Homepage on the Internet: <http://www.udel.edu/IR/>

MEMBERS OF THE BOARD OF TRUSTEES

As of September 2009

Ex-Officio Members

Jack Markell, *Governor of the State of Delaware*
Teri Quinn Gray, *President of the State Board of Education*
William H. Narvel, Jr., *Master of the State Grange*
Patrick T. Harker, *President of the University*

Officers of the Board

A. Gilchrist Sparks III, *Chairman*
John R. Cochran, *Vice Chair*
Mary Jane Willis, *Vice Chair*
Carey M. Koppenhaver, *Secretary-Treasurer*

Elected and Appointed Members

Antoine (Tony) Allen	Scott A. Green
James C. Borel	Teagan Gregory
Thomas J. Burns	Terri Kelly
Irwin G. Burton III	Dennis E. Klima
R.R.M. Carpenter III	Cynthia Primo Martin
Allison Castellanos	Christopher H. Schell
Richard S. Cordrey	Everett C. Toomey
Howard E. Cosgrove	H. Wesley Towers, Jr.
Patricia A. DeLeon	P. Coleman Townsend, Jr.
Robert A. Fischer, Jr.	Sherman L. Townsend
Robert W. Gore	John E. Wallace, Jr.
T. Henley Graves	Kenneth C. Whitney

Honorary Counselor

Andrew B. Kirkpatrick, Jr.

Trustees *Emeriti*

Werner C. Brown
Sally H. Higgins
Robert F. Rider

ADMINISTRATIVE LEADERS

PATRICK T. HARKER, President of the University

TOM APPLE, Provost

SCOTT R. DOUGLASS, Executive Vice President and University Treasurer

DAVID L. BROND, Vice President for Communications and Marketing

JENNIFER W. DAVIS, Vice President for Administration

MICHAEL A. GILBERT, Vice President for Student Life

PIERRE D. HAYWARD, Vice President and University Secretary

CARL JACOBSON, Vice President for Information Technologies

HAVIDÁN RODRÍGUEZ, Deputy Provost

ROBERT M. SPECTER, Vice President for Finance

MONICA M. TAYLOR, Vice President for Development and Alumni Relations

LAWRENCE WHITE, Vice President and General Counsel

PATRICIA PLUMMER WILSON, Vice President and Chief of Staff

COLLEGE ADMINISTRATION

ROBIN MORGAN, Dean, College of Agriculture and Natural Resources

GEORGE WATSON, Interim Dean, College of Arts and Sciences

CONRADO M. GEMPESAW, Dean, Alfred Lerner College of Business and Economics

NANCY TARGETT, Dean, College of Earth, Ocean, and Environment

MICHAEL GAMEL-MCCORMICK, Dean, College of Education and Public Policy

MICHAEL CHAJES, Dean, College of Engineering

KATHLEEN MATT, Dean, College of Health Sciences

2009-10 FACTS & FIGURES

Table of Contents

	<u>Page No.</u>
Mission and Vision	1
At A Glance	3
Synopsis of Undergraduate Degree Programs and Majors	5
Synopsis of Graduate Degree Programs	7
Twenty-Five Most Popular Undergraduate Majors	9
Students	
Average SAT Scores By Residence for First-Time Freshmen	10
First-Time Freshman Admissions Activity	11
Distribution of Completed Admissions Applications and Accepted Offers	12
- Completed Applications and Offers Accepted (figure)	12
Enrollment By College or Division and Time Status	13
- Trends in Total Enrollment (figure)	16
Ethnicity of Students By Time Status	17
Undergraduate Enrollment By Gender	19
Graduate Enrollment By Gender	20
Enrollment By Residence Status	21
Retention Rates	23
Graduation Rates	24
Degrees Granted By College and Level	25
Employment and Educational Status of Baccalaureates	26
Personnel	
Employees By Ethnicity and EEO Category	27
Full-Time Employees By Gender	30
Number of Faculty By Rank and Tenure Status	31
Tenure Status Among Full-Time Tenure Track Faculty	32
Average Total Compensation of Full-Time Faculty	33
Full-Time Employees' Salary Principal Source of Funding	34

Table of Contents, continued

	<u>Page No.</u>
Finances	
Statement of Operating Activities.....	35
Operating Revenue, Expenses and Transfers (figure)	36
Change in Net Assets	37
Externally Sponsored Activities	38
Undergraduate Tuition, Fees, Room and Board Charges	39
Undergraduate Student Charges at Delaware and Admissions Competitors.....	40
Facilities	
Building Inventory	41
Land Inventory	42
University Library.....	43
University of Delaware Administrative Organizational Chart	
University of Delaware Regional, National and Specialized Accreditors	



MISSION AND VISION

MISSION STATEMENT

The University of Delaware exists to cultivate learning, develop knowledge, and foster the free exchange of ideas. State-assisted yet privately governed, the University has a strong tradition of distinguished scholarship, research, teaching, and service that is grounded in a commitment to increasing and disseminating scientific, humanistic, and social knowledge for the benefit of the larger society. Founded in 1743 and chartered by the state in 1833, the University of Delaware today is a land-grant, sea-grant, and space-grant university.

The University of Delaware is a major research university with extensive graduate programs that is also dedicated to outstanding undergraduate and professional education. University faculty are committed to the intellectual, cultural, and ethical development of students as citizens, scholars, and professionals. University graduates are prepared to contribute to a global society that requires leaders with creativity, integrity, and a dedication to service.

The University of Delaware promotes an environment in which all people are inspired to learn, and encourages intellectual curiosity, critical thinking, free inquiry, and respect for the views and values of an increasingly diverse population.

An institution engaged in addressing the critical needs of the state, nation, and global community, the University of Delaware carries out its mission with the support of alumni who span the globe and in partnership with public, private, and nonprofit institutions in Delaware and beyond.

STRATEGIC MILESTONES

The following strategic goals build upon key strengths and critical capabilities of the University of Delaware and define the aspirations and initiatives that will advance the University on a Path to Prominence™. The implementation of action steps developed for each of these milestones will assist in fulfilling the mission and vision of the University.

- Create a diverse and stimulating undergraduate academic environment that attracts and supports students from Delaware and diverse backgrounds and enhances intellectual exploration.
- Develop faculty leadership in key intellectual areas to strengthen and expand high-profile research initiatives and increase the profile and growth of graduate studies.
- Support excellence in professional education, including the establishment of new programs in areas of health, educational leadership, and applied science and engineering.

- Strengthen the University's initiative for the planet that will lead to path-breaking environmental research, the development of alternative energy technologies and demonstrate ecologically-friendly green practices.
- Foster knowledge and awareness of the economic, environmental, political, cultural and social issues that face the world by developing strategic and active global partnerships.
- Promote public service and the engagement of the University with issues of importance to Delaware, the nation, and the world community.

INITIATIVES AND ACCOMPLISHMENTS

Many academic and administrative initiatives are currently being implemented in order to meet the University's strategic milestones, including:

- An expanded Commitment to Delawareans program that defines the academic roadmap for admission and success at UD;
- Development of integrated environmental science and studies curricula to provide easy access to environmental options that cross the University's colleges;
- Continued expansion of collaborative program and research opportunities with Delaware Health Sciences Alliance (DHSA) partners;
- Launching of the Delaware Environmental Institute (DENIN) and planning for a new interdisciplinary science and engineering laboratory to house DENIN and the UD Energy Institute as well as teaching and research facilities on campus;
- Continuation of campus-wide sustainability efforts aimed at achievement of goals set forth in UD's climate action plan;
- Fostering new university-wide interdisciplinary graduate research opportunities and developing master's level professional education programs through the Office of Graduate and Professional Education;
- Advancing the impact and visibility of University researchers through the UD Research Office by developing the intellectual and environmental resources and facilities that will attract, retain and nurture outstanding scholars and advance the application of UD research and scholarship through collaboration with the Office of Economic Innovation and Partnerships;
- Expansion of the University's commitment to global studies through the establishment of the Institute for Global Studies (IGS) and continued strategic partnerships that enhance international research and educational opportunities for faculty and students;
- Ongoing support of UDconnection, an alumni virtual community developed to enhance alumni connections across the US and abroad, increase private support to the University; and
- Establishment of the Office of Equity & Inclusion, one of the recommendations implemented by the diversity action council to enhance the University's ethnic and geographic diversity.



2009-10

AT A GLANCE

History/Location: The University of Delaware, a state assisted institution, is a Land Grant, Sea Grant, Space Grant, Carnegie Research University (very high research activity). The University, with origins in 1743, was chartered by the State of Delaware in 1833. A Women's College was opened in 1914, and in 1945 UD became permanently coeducational. The main campus is located in Newark, Delaware, a suburban community of nearly 30,000, situated midway between Philadelphia and Baltimore. Courses are also offered at the Wilmington campus and at other locations throughout the State, including Dover, Georgetown, Milford, and Lewes.

Academic Schools, Programs, and Degrees: Agriculture and Natural Resources; Arts and Sciences; Business and Economics; Earth, Ocean, and Environment; Education and Public Policy; Engineering; and Health Sciences. UD offers 4 associate's programs, 127 bachelor's programs, 84 master's programs, 42 doctoral programs, and 12 dual graduate programs. In 2008-09, UD awarded 195 associate's degrees, 3,569 bachelor's degrees, 727 master's degrees, and 251 doctoral degrees. Doctoral and professional degrees were awarded in Agriculture, Business and Economics, Education, Engineering, Human Development and Family Studies, Marine Studies, Nursing, Urban Affairs and Public Policy, and a range of Arts & Sciences disciplines (including Art History, Biological Sciences, Chemistry and Biochemistry, Computer Science, English, History, Linguistics and Cognitive Science, Applied Mathematics, Physical Therapy, Physics, Political Science and International Relations, Psychology, and Sociology).

Institutional Accreditation: The University of Delaware has been continuously accredited by the Middle States Commission on Higher Education since that association's inception in 1921. The University's accreditation was reaffirmed in 2006 and its next self-study evaluation is scheduled for 2011. The regional, national and specialized accrediting organizations that accredit UD's programs/degrees appear at the end of this book.

Faculty: In 2009-10, there are 1,111 full-time faculty positions. Approximately 81% of full-time tenure-eligible faculty are tenured and over 80% of full-time faculty hold the doctorate or terminal professional degree in their field. Average total compensation in 2009-10 is \$171,414 for Full Professors, \$120,879 for Associate Professors, and \$101,362 for Assistant Professors.

Enrollment: Fall 2009 enrollment totals 21,138 which include 16,521 undergraduates, 3,634 graduate students, and 983 professional and continuing studies students. 15,786 (96%) of undergraduate and 2,671 (74%) of graduate students are enrolled on a full-time basis. 42% of undergraduate students are male. 64% of undergraduate and 69% of graduate students are from out-of-state. 5.6% of undergraduate and 4.9% of graduate students are African-American. Approximately 50% of undergraduate students live in residence halls.

Admissions/Retention: Over 23,000 students applied to the University of Delaware for Fall 2009 enrollment. 4,223 (29.9%) first-time freshmen accepted their admission offers. Average SAT score (critical reading plus mathematics) for first-time Newark Campus freshmen was 1195. On average, 91% of Newark Campus freshmen return for their sophomore year and 3 out of 4 students graduate within five years.

Costs: Annual full-time undergraduate tuition and fees for 2009-10 are \$9,486 (in-state) and \$23,186 (out-of-state). Room and board is \$9,066. Total undergraduate costs for 2009-10 are \$18,552 (in-state) and \$32,252 (out-of-state).

Finances: For Fiscal Year 2009, Total Operating Revenues were \$728.5 million, including \$126.7 million for State Appropriations. Total Operating Expenses and Transfers were \$728.5 million. Externally Funded Activity totaled \$163.2 million.

Institutional Affiliations: UD is a member of the Association of Public and Land Grant Universities (APLU). In athletics, UD began NCAA Division I competition in 1973 for men and 1982 for women. UD currently competes in the Colonial Athletic Association (CAA) for all sports. Football competes at the Championship Subdivision level, and all other sports compete at the Division I level.

SYNOPSIS OF UNDERGRADUATE DEGREE PROGRAMS AND MAJORS

COLLEGE OF AGRICULTURE AND NATURAL RESOURCES	<i>Associate in Science</i>		
	<i>Bachelor of Science</i>	Agriculture and Natural Resources Agricultural Education Animal and Food Sciences Engineering Technology (includes Applied Electronics and Controls, and Construction Technology and Technical Management) Entomology Environmental Soil Science Food and Agribusiness Marketing and Management Food Science	Landscape Horticulture and Design (includes Landscape Horticulture, Landscape Design, and Public Horticulture) Natural Resource Management Plant Protection Plant Science Pre-Veterinary Medicine and Animal Biosciences Resource Economics (includes Environmental Economics and Sustainable Development) Statistics Wildlife Conservation
COLLEGE OF ARTS AND SCIENCES	<i>Associate in Arts</i>		
	<i>Associate in Science</i>		
	<i>Bachelor of Arts</i>	Ancient Greek and Roman Studies Anthropology Anthropology Education Art Art History Biological Sciences Biological Sciences Education Black American Studies Chemistry Chemistry Education Communication (includes Interpersonal, Mass Communication) Comparative Literature Computer Science Criminal Justice East Asian Studies English (includes Creative Writing, Drama, Ethnic/Cultural Studies, Film, Literary Studies, Professional Writing) English Education European Studies Foreign Languages and Literatures (includes Ancient Greek and Roman Studies, French Studies, German Studies, Italian Studies, Russian Studies, Spanish Studies, Three Languages) French Education French/Political Science German Education German/Political Science History (includes American History, European History, and World History)	History Education History/Classics History/French History/German History/Russian History/Spanish International Relations Italian Education Latin American Studies Latin Education Material Culture Preservation Mathematical Sciences Mathematics Education Music (includes Music Management Studies) Philosophy Physics Physics Education Political Science (includes American Politics, Global Studies, Public Law, Public Policy and Administration) Political Science Education Psychology Psychology Education Sociology (includes Emergency and Environmental Management, Health Services, Law and Society, and Social Welfare) Sociology Education Spanish Education Spanish/Political Science Women's Studies
	<i>Bachelor of Arts in Liberal Studies</i>	Liberal Studies	
	<i>Bachelor of Fine Arts</i>	Fine Arts	Visual Communications
	<i>Bachelor of Music</i>	Applied Music--Instrumental (Winds, Strings, and Percussion) Applied Music--Keyboard (Piano, Organ, Harpsichord) Applied Music--Guitar Applied Music--Voice	Music Theory/Composition Music Education--Instrumental (Winds, Strings, and Percussion) Music Education--General/Choral (includes Piano, Voice)
	<i>Bachelor of Science</i>	Biochemistry Biological Sciences (includes Biotechnology, Cellular and Molecular Biology and Genetics, Ecology and Organismic Biology) Chemistry (includes Environmental Chemistry) Cognitive Science Computer Science	Information Systems Mathematical Sciences Mathematics Education Mathematics and Economics Neuroscience Physics (includes Astronomy/Astrophysics) Psychology Quantitative Biology

ALFRED LERNER COLLEGE OF BUSINESS AND ECONOMICS	<i>Bachelor of Arts</i>	Economics (includes Applied Economics, Economic Theory and Econometrics, Economics Education)	
	<i>Bachelor of Science</i>	Accounting Economics (includes Applied Economics, Economic Theory and Econometrics) Finance Hotel, Restaurant and Institutional Management	International Business Studies Management Information Systems Management Marketing Operations Management
COLLEGE OF EARTH, OCEAN, AND ENVIRONMENT	<i>Bachelor of Arts</i>	Earth Science Education Environmental Studies Geography	Geography Education Geology
	<i>Bachelor of Science</i>	Environmental Science Geology	
COLLEGE OF EDUCATION AND PUBLIC POLICY	<i>Associate in Arts</i>		
	<i>Bachelor of Arts</i>	Educational Studies Energy and Environmental Policy	Public Policy
	<i>Bachelor of Science in Education</i>	Elementary Teacher Education	
	<i>Bachelor of Science</i>	Apparel Design Early Childhood Education Fashion Merchandising Human Services (Clinical Services, Administration & Family Policy)	
COLLEGE OF ENGINEERING	<i>Bachelor of Chemical Engineering</i>	Chemical Engineering	
	<i>Bachelor of Civil Engineering</i>	Civil Engineering	
	<i>Bachelor of Computer Engineering</i>	Computer Engineering	
	<i>Bachelor of Electrical Engineering</i>	Electrical Engineering	
	<i>Bachelor of Environmental Engineering</i>	Environmental Engineering	
	<i>Bachelor of Mechanical Engineering</i>	Mechanical Engineering	
COLLEGE OF HEALTH SCIENCES	<i>Bachelor of Science</i>	Applied Nutrition Athletic Training Dietetics Exercise Science (includes Biomechanics, Exercise Physiology and Medical Scholars) Health Behavior Science	Health and Physical Education Health Studies Medical Technology Nutritional Sciences Sport Management
	<i>Bachelor of Science in Nursing</i>	Nursing	Baccalaureate for the Registered Nurse (B.R.N.)

SYNOPSIS OF GRADUATE DEGREE PROGRAMS

COLLEGE OF AGRICULTURE AND NATURAL RESOURCES	<i>Master of Arts</i>	Agricultural Education	
	<i>Master of Science</i>	Agriculture and Resource Economics Animal Science Bioresources Engineering Entomology Food Science	Operations Research Plant and Soil Sciences Public Horticulture Statistics Wildlife Ecology
	<i>Doctor of Philosophy</i>	Animal Science Entomology and Wildlife Ecology	Operations Research Plant and Soil Sciences
COLLEGE OF ARTS AND SCIENCES	<i>Master of Arts</i>	American Material Culture Art History Chemistry and Biochemistry Communication Criminology English Foreign Languages and Literatures Foreign Languages and Pedagogy	History Liberal Studies Linguistics and Cognitive Science Political Science and International Relations Psychology Sociology
	<i>Master of Fine Arts</i>	Fine Arts	Theatre
	<i>Master of Music</i>	Music (includes Performance, Teaching and Composition)	
	<i>Master of Science</i>	Applied Mathematics Art Conservation Biological Sciences Biomechanics and Movement Science (interdisciplinary)	Chemistry and Biochemistry Computer Science Mathematics Physics
	<i>Doctor of Philosophy</i>	Applied Mathematics Art History Biological Sciences Biomechanics and Movement Science (interdisciplinary) Chemistry and Biochemistry Computer Science Criminology English	History Linguistics Mathematics Physics Political Science and International Relations Preservation Studies Psychology Sociology
	<i>Doctor of Philosophy/Master of Business Administration</i>	Biological Sciences/Business Administration	
	<i>Certificate Program</i>	Computational Science and Engineering (interdisciplinary)	
ALFRED LERNER COLLEGE OF BUSINESS AND ECONOMICS	<i>Master of Arts</i>	Economics	Economics and Entrepreneurship for Educators
	<i>Master of Arts/Master of Business Administration</i>	Economics/Business Administration	
	<i>Dual MBA and Engineering Master's Program</i>	<i>See the College of Engineering</i>	
	<i>Master of Business Administration</i>	Business Administration	
	<i>Master of Business Administration/Master of Science</i>	Business Administration/Accounting Business Administration/Finance Business Administration/Organizational Effectiveness, Development and Change	Business Administration/ Information Systems and Technology Management
	<i>Master of Science</i>	Accounting Economics Finance Hospitality Information Management	Information Systems and Technology Management Organizational Effectiveness, Development and Change
	<i>Doctor of Philosophy/Master of Business Administration</i>	Biological Sciences/Business Administration	
	<i>Doctor of Philosophy</i>	Economics	

COLLEGE OF EARTH, OCEAN, AND ENVIRONMENT	<i>Master of Arts</i>	Geography	
	<i>Master of Marine Management</i>	Marine Management	
	<i>Master of Marine Policy</i>	Marine Policy	
	<i>Master of Science</i>	Geography Geology	Marine Studies Ocean Engineering
	<i>Doctor of Philosophy</i>	Geography Geology Marine Studies	Oceanography Ocean Engineering
	<i>Certificate Program</i>	Geographic Information Science (GIS)	
COLLEGE OF EDUCATION AND PUBLIC POLICY	<i>Master of Arts</i>	Counseling in Higher Education Education School Psychology	Teaching English as a Second Language Urban Affairs and Public Policy
	<i>Master of Education</i>	Curriculum and Instruction School Leadership Higher Education Administration	Educational Technology Exceptional Children and Youth Reading
	<i>Master of Environmental and Energy Policy</i>	Environmental and Energy Policy	
	<i>Master of Instruction</i>	Instruction	
	<i>Master of Public Administration</i>	Public Administration	
	<i>Master of Science</i>	Disaster Science and Management Evaluation Fashion Studies	Human Development and Family Studies
	<i>Education Specialist</i>	School Psychology	
	<i>Doctor of Education</i>	Educational Leadership	
	<i>Doctor of Philosophy</i>	Disaster Science and Management Education Environmental and Energy Policy Fashion and Apparel Studies	Human Development and Family Studies Urban Affairs and Public Policy
<i>Certificate Program</i>	Socially Responsible and Sustainable Apparel Business		
COLLEGE OF ENGINEERING	<i>Master of Applied Sciences</i>	Civil Engineering	
	<i>Master of Applied Sciences/MBA</i>	Civil Engineering/Business Administration	
	<i>Master of Chemical Engineering</i>	Chemical Engineering	
	<i>Master of Chemical Engineering/MBA</i>	Chemical Engineering/Business Administration	
	<i>Master of Civil Engineering</i>	Civil Engineering	
	<i>Master of Civil Engineering / MBA</i>	Civil Engineering / Business Administration	
	<i>Master of Science</i>	Biomechanics and Movement Science Electrical and Computer Engineering	Mechanical Engineering (thesis) Ocean Engineering
	<i>Master of Science / MBA</i>	Electrical and Computer Engineering / Business Administration	Mechanical Engineering (thesis) / Business Administration
	<i>Master of Engineering: Mechanical</i>	Mechanical Engineering (non-thesis)	
	<i>Master of Engineering: Mechanical / MBA</i>	Mechanical Engineering (non-thesis) / Business Administration	
	<i>Master of Materials Science and Engineering</i>	Materials Science and Engineering	
	<i>Master of Materials Science and Engineering / MBA</i>	Materials Science and Engineering / Business Administration	
	<i>Doctor of Philosophy</i>	Chemical Engineering Civil Engineering Electrical and Computer Engineering	Materials Science and Engineering Mechanical Engineering Ocean Engineering
COLLEGE OF HEALTH SCIENCES	<i>Master of Science</i>	Biomechanics and Movement Science Exercise Science Health Promotion Health Services Administration	Human Nutrition Human Nutrition/Dietetic Internship Program
	<i>Master of Science in Nursing</i>	Nursing (includes Adult Nurse Practitioner, Clinical Nurse Specialist, Family Nurse Practitioner, Health Services Administration, and Neonatal Nurse Practitioner Certification)	
	<i>Doctor of Philosophy</i>	Biomechanics and Movement Science (Interdisciplinary)	
	<i>Doctor of Physical Therapy</i>	Physical Therapy	
	<i>Certificate Programs</i>	Nutrition and Dietetics Certificate Program	Post-Master's Certificate Program in Nursing

**TWENTY-FIVE MOST POPULAR
UNDERGRADUATE MAJORS**
Fall 2009

Rank	Major
1	Biological Sciences
2	Psychology
3	Nursing
4	Finance
5	Elementary Teacher Education
6	Marketing
7	Mechanical Engineering
8	Exercise Science
9	English
10	Accounting
11	Political Science
12	Hotel, Restaurant and Institutional Management
13	Criminal Justice
14	Civil Engineering
15	Chemical Engineering
16	History
17	Communication Interest
18	Fashion Merchandising
19	Business Administration
20	International Relations
21	Management
22	Communication
23	Human Services
24	Economics
25	Dietetics

Source: Office of Institutional Research/UDEW

**AVERAGE SCHOLASTIC APTITUDE TEST SCORES
BY RESIDENCE FOR FIRST-TIME FRESHMEN
*Fall 2009***

SAT Critical Reading Scores		
Associate in Arts		
Delawareans ¹		489
Newark Campus		
Delawareans		566
Nonresidents		600
Total		589
National Avg.		501
SAT Mathematics Scores		
Associate in Arts		
Delawareans ¹		484
Newark Campus		
Delawareans		574
Nonresidents		622
Total		606
National Avg.		515
SAT Writing Scores		
Associate in Arts		
Delawareans ¹		479
Newark Campus		
Delawareans		557
Nonresidents		603
Total		588
National Avg.		493

¹ Includes children of employees and armed forces personnel stationed in Delaware and students who are in the process of fulfilling the 12 month durational requirement for Delaware residency.

Source: Office of Institutional Research/UDEW

FIRST-TIME FRESHMAN ADMISSIONS ACTIVITY
Fall 2009

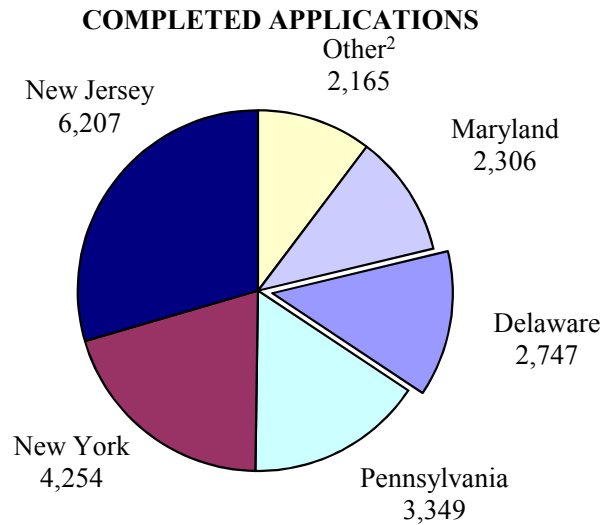
	Total Applications	Completed Applications	Offered Admission	Offer Rate	Offer Accepted	Yield Rate
ALL STUDENTS						
Applied to Newark Campus	24,600	22,886	13,425	58.7%	3,818	28.4%
Applied to Newark Campus, but admitted to Associate in Arts Program	--	--	589	2.6%	327	55.5%
Applied to Associate in Arts Program	144	119	95	79.8%	78	82.1%
TOTAL	24,744	23,005	14,109	61.3%	4,223	29.9%
DELAWAREANS						
Applied to Newark Campus	2,822	2,628	1,833	69.7%	1,204	65.7%
Applied to Newark Campus, but admitted to Associate in Arts Program ¹	--	--	589	22.4%	327	55.5%
Applied to Associate in Arts Program ¹	144	119	95	79.8%	78	82.1%
TOTAL	2,966	2,747	2,517	91.6%	1,609	63.9%
NONRESIDENTS						
Applied to Newark Campus	21,778	20,258	11,592	57.2%	2,614	22.6%
TOTAL	21,778	20,258	11,592	57.2%	2,614	22.6%

¹ Includes children of employees and armed forces personnel stationed in Delaware, and students who are in the process of fulfilling the 12 month durational requirement for Delaware residency.

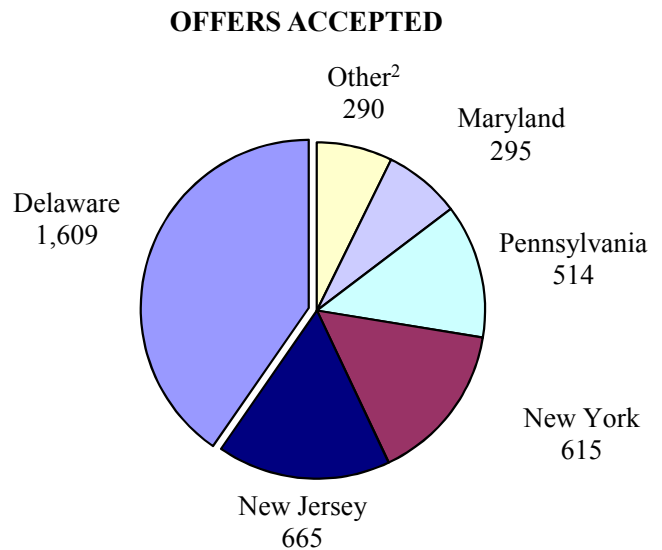
Source: Office of Institutional Research/UDEW

**DISTRIBUTION OF COMPLETED ADMISSIONS APPLICATIONS
AND ACCEPTED OFFERS
FIRST-TIME FRESHMEN FROM SELECT REGIONAL STATES
Fall 2009**

STATE	COMPLETED APPLICATIONS	% OF TOTAL ¹
New Jersey	6,207	29.5%
New York	4,254	20.2%
Pennsylvania	3,349	15.9%
DELAWARE	2,747	13.1%
Maryland	2,306	11.0%
Massachusetts	812	3.9%
Connecticut	786	3.7%
Virginia	467	2.2%
District of Columbia	100	0.5%
TOTAL¹	21,028	100.0%



STATE	OFFER ACCEPTED	% OF TOTAL ¹
DELAWARE	1,609	40.3%
New Jersey	665	16.7%
New York	615	15.4%
Pennsylvania	514	12.9%
Maryland	295	7.4%
Connecticut	113	2.8%
Massachusetts	111	2.8%
Virginia	58	1.5%
District of Columbia	8	0.2%
TOTAL¹	3,988	100.0%



¹ Total refers to applications and accepted offers from these nine states only.

² Other includes Connecticut, Massachusetts, Virginia, and the District of Columbia.

**ENROLLMENT BY COLLEGE OR DIVISION
AND TIME STATUS
*Fall 2005 Through Fall 2009***

	2005	2006	2007	2008	2009
UNIVERSITY TOTAL	20,982	20,380	20,342	20,500	21,138
Full-Time	17,956	17,546	17,679	17,881	18,469
Part-Time	3,026	2,834	2,663	2,619	2,669
Undergraduate¹	16,350	15,849	15,983	16,075	16,521
Full-Time	15,435	14,992	15,152	15,287	15,786
Part-Time	915	857	831	788	735
Graduate²	3,434	3,446	3,405	3,448	3,634
Full-Time	2,502	2,540	2,514	2,584	2,671
Part-Time	932	906	891	864	963
Professional & Continuing Studies³	1,198	1,085	954	977	983
Full-Time	19	14	13	10	12
Part-Time	1,179	1,071	941	967	971
College of Agriculture & Natural Resources	805	771	833	849	881
Undergraduate	636	596	664	669	698
Full-Time	579	529	606	623	657
Part-Time	57	67	58	46	41
Graduate	169	175	169	180	183
Full-Time	154	160	157	172	175
Part-Time	15	15	12	8	8
College of Arts & Sciences	8,178	7,755	7,597	7,525	7,269
Undergraduate	6,948	6,540	6,409	6,288	6,162
Full-Time	6,544	6,169	6,010	5,914	5,821
Part-Time	404	371	399	374	341
Graduate	1,230	1,215	1,188	1,237	1,107
Full-Time	1,088	1,094	1,082	1,140	1,017
Part-Time	142	121	106	97	90
Office of University Studies (No Graduate Program)	1,086	1,014	923	956	1,048
Undergraduate	1,086	1,014	923	956	1,048
Full-Time	1,044	974	890	916	1,014
Part-Time	42	40	33	40	34

ENROLLMENT (Continued)

	2005	2006	2007	2008	2009
Alfred Lerner College of Business & Economics⁴	2,708	2,785	2,899	3,452	3,396
Undergraduate	2,171	2,273	2,368	2,906	2,786
Full-Time	2,114	2,206	2,314	2,835	2,720
Part-Time	57	67	54	71	66
Graduate	537	512	531	546	610
Full-Time	244	243	245	253	281
Part-Time	293	269	286	293	329
College of Earth, Ocean, & Environment⁵	101	148	153	165	310
Undergraduate	--	24	39	47	167
Full-Time	--	23	35	44	160
Part-Time	--	1	4	3	7
Graduate	101	124	114	118	143
Full-Time	97	123	112	114	139
Part-Time	4	1	2	4	4
College of Education & Public Policy	2,720	2,631	2,523	2,071	2,107
Undergraduate	2,014	1,906	1,852	1,401	1,396
Full-Time	1,915	1,825	1,775	1,345	1,364
Part-Time	99	81	77	56	32
Graduate	706	725	671	670	711
Full-Time	397	399	389	380	409
Part-Time	309	326	282	290	302
College of Engineering	1,782	1,731	1,794	1,845	2,056
Undergraduate	1,240	1,206	1,286	1,336	1,510
Full-Time	1,203	1,173	1,255	1,303	1,482
Part-Time	37	33	31	33	28
Graduate	542	525	508	509	546
Full-Time	468	452	448	463	484
Part-Time	74	73	60	46	62
College of Health Sciences	1,796	1,822	2,001	1,992	2,324
Undergraduate	1,647	1,652	1,777	1,804	1,990
Full-Time	1,481	1,501	1,634	1,659	1,824
Part-Time	166	151	143	145	166
Graduate ⁶	149	170	224	188	334
Full-Time	54	69	81	62	166
Part-Time	95	101	143	126	168

ENROLLMENT (Continued)

	2005	2006	2007	2008	2009
Newark Campus	19,176	18,657	18,723	18,855	19,391
Undergraduate	15,742	15,211	15,318	15,407	15,757
Full-Time	14,880	14,400	14,519	14,639	15,042
Part-Time	862	811	799	768	715
Graduate	3,434	3,446	3,405	3,448	3,634
Full-Time	2,502	2,540	2,514	2,584	2,671
Part-Time	932	906	891	864	963
Associate in Arts: Georgetown	166	153	118	148	156
Undergraduate	166	153	118	148	156
Full-Time	134	138	117	144	153
Part-Time	32	15	1	4	3
Associate in Arts: Dover	113	113	115	112	146
Undergraduate	113	113	115	112	146
Full-Time	108	109	113	107	144
Part-Time	5	4	2	5	2
Associate in Arts: Wilmington	329	372	432	408	462
Undergraduate	329	372	432	408	462
Full-Time	313	345	403	397	447
Part-Time	16	27	29	11	15
University Associate in Arts Program	608	638	665	668	764
Undergraduate	608	638	665	668	764
Full-Time	555	592	633	648	744
Part-Time	53	46	32	20	20

¹ Official 10th Day headcounts, Newark Campus and University Associate in Arts Program combined.

² Graduate students on sustaining status are considered full-time if the student spends at least one-half time on the completion of his/her thesis or dissertation.

³ Professional & Continuing Studies Students are non-matriculated and are unclassified although enrolled in undergraduate and graduate degree credit courses.

⁴ The Hotel, Restaurant & Institutional Management Department moved from the College of Education & Public Policy to the Alfred Lerner College of Business & Economics in 2008.

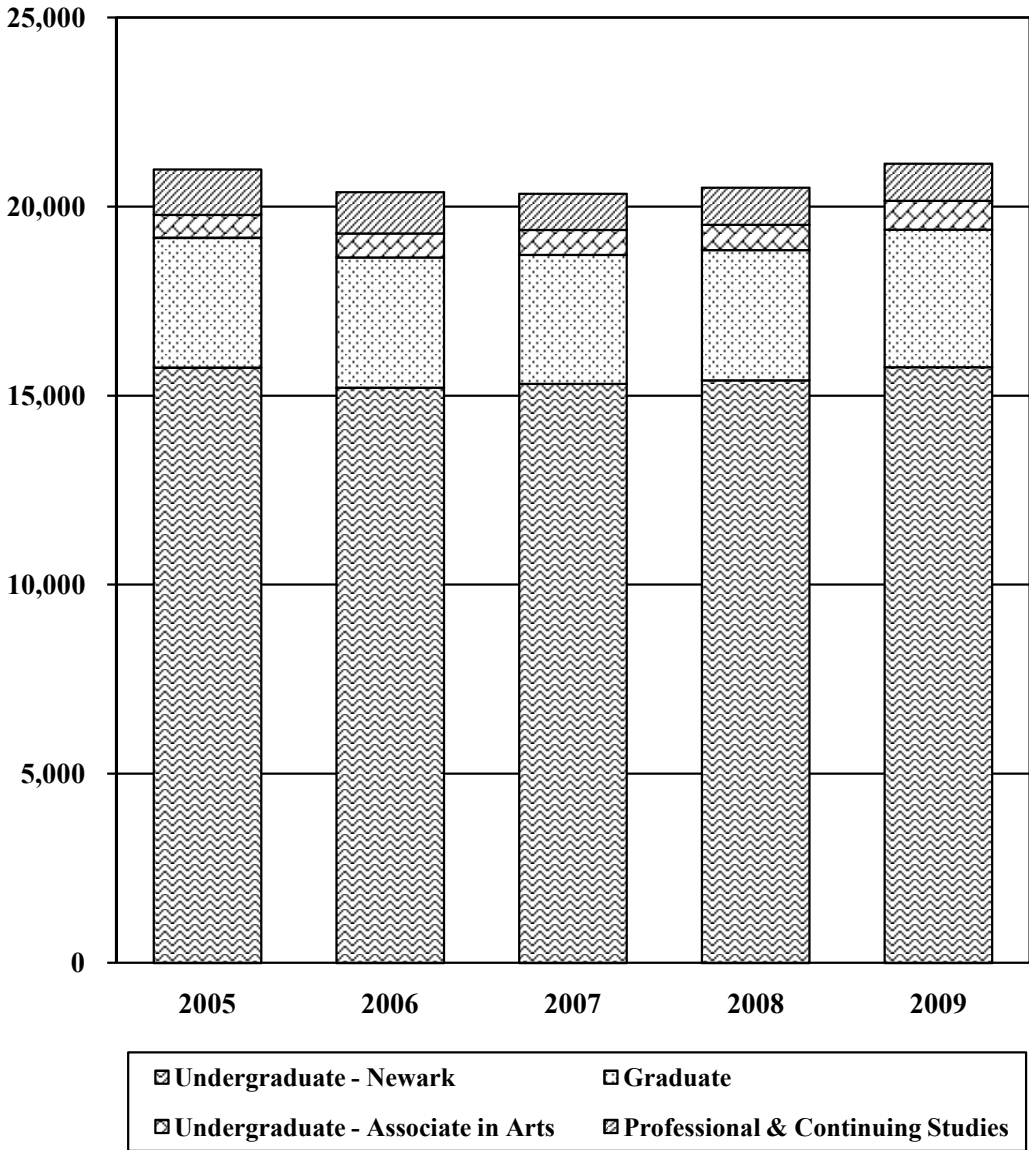
⁵ The Geology Department moved from the College of Arts & Sciences to the College of Earth, Ocean, & Environment in 2006, followed by the Geography Department's move from the College of Arts & Sciences to the College of Earth, Ocean, & Environment in 2009.

⁶ The Department of Physical Therapy moved from the College of Arts & Sciences to the College of Health Sciences in 2009.

Source: Office of Institutional Research/UDEW

TRENDS IN TOTAL ENROLLMENT

Fall 2005 Through Fall 2009



ETHNICITY OF STUDENTS BY TIME STATUS
Fall 2005 Through Fall 2009

A. FULL-TIME MATRICULATED STUDENTS

	2005		2006		2007		2008		2009	
	N	%	N	%	N	%	N	%	N	%
Undergraduate¹										
Total	15,435	100.0	14,992	100.0	15,152	100.0	15,287	100.0	15,786	100.0
White	13,033	84.4	12,451	83.1	12,286	81.1	12,256	80.2	12,398	78.5
African-American	864	5.6	800	5.3	846	5.6	839	5.5	865	5.5
Hispanic	630	4.1	661	4.4	778	5.1	831	5.4	885	5.6
Asian	537	3.5	575	3.8	589	3.9	643	4.2	680	4.3
Native American	49	0.3	52	0.3	49	0.3	42	0.3	29	0.2
Non-Resident Alien	116	0.8	96	0.6	148	1.0	160	1.0	304	1.9
Other ²	206	1.3	357	2.4	456	3.0	516	3.4	625	4.0
Graduate										
Total	2,502	100.0	2,540	100.0	2,514	100.0	2,584	100.0	2,671	100.0
White	1,400	56.0	1,455	57.3	1,372	54.6	1,410	54.6	1,414	52.9
African-American	102	4.1	101	4.0	109	4.3	108	4.2	103	3.9
Hispanic	57	2.3	50	2.0	42	1.7	50	1.9	63	2.4
Asian	77	3.1	68	2.7	64	2.5	73	2.8	72	2.7
Native American	6	0.2	3	0.1	4	0.2	9	0.3	11	0.4
Non-Resident Alien	815	32.6	794	31.3	838	33.3	874	33.8	947	35.5
Other ²	45	1.8	69	2.7	85	3.4	60	2.3	61	2.3

B. PART-TIME MATRICULATED STUDENTS

	2005		2006		2007		2008		2009	
	N	%	N	%	N	%	N	%	N	%
Undergraduate¹										
Total	915	100.0	857	100.0	831	100.0	788	100.0	735	100.0
White	731	79.9	674	78.6	643	77.4	624	79.2	573	78.0
African-American	86	9.4	86	10.0	65	7.8	57	7.2	62	8.4
Hispanic	31	3.4	23	2.7	26	3.1	26	3.3	32	4.4
Asian	34	3.7	35	4.1	42	5.1	28	3.6	28	3.8
Native American	3	0.3	7	0.8	7	0.8	8	1.0	4	0.5
Non-Resident Alien	9	1.0	4	0.5	14	1.7	14	1.8	6	0.8
Other ²	21	2.3	28	3.3	34	4.1	31	3.9	30	4.1

B. PART-TIME MATRICULATED STUDENTS (Continued)

	2005		2006		2007		2008		2009	
	N	%	N	%	N	%	N	%	N	%
Graduate										
Total	932	100.0	906	100.0	891	100.0	864	100.0	963	100.0
White	761	81.7	706	77.9	675	75.8	666	77.1	726	75.4
African-American	70	7.5	59	6.5	49	5.5	56	6.5	75	7.8
Hispanic	17	1.8	13	1.4	22	2.5	25	2.9	25	2.6
Asian	34	3.6	37	4.1	52	5.8	54	6.3	58	6.0
Native American	3	0.3	4	0.4	3	0.3	3	0.3	3	0.3
Non-Resident Alien	33	3.5	49	5.4	44	4.9	26	3.0	30	3.1
Other ²	14	1.5	38	4.2	46	5.2	34	3.9	46	4.8

C. PROFESSIONAL & CONTINUING STUDIES STUDENTS

	2005		2006		2007		2008		2009	
	N	%	N	%	N	%	N	%	N	%
Undergraduate										
Total	1,198	100.0	1,085	100.0	954	100.0	977	100.0	983	100.0
White	926	77.3	828	76.3	702	73.6	682	69.8	700	71.2
African-American	121	10.1	89	8.2	86	9.0	101	10.3	86	8.7
Hispanic	35	2.9	41	3.8	25	2.6	31	3.2	26	2.6
Asian	68	5.7	72	6.6	47	4.9	55	5.6	61	6.2
Native American	2	0.2	2	0.2	3	0.3	4	0.4	6	0.6
Non-Resident Alien	20	1.7	16	1.5	24	2.5	44	4.5	65	6.6
Other ²	26	2.2	37	3.4	67	7.0	60	6.1	39	4.0

¹ Official 10th Day headcounts, Newark Campus and University Associate in Arts Program combined.

² Other includes Multiracial/Non-Specified, Native Hawaiian or Other Pacific Islander, or Unknown.

Note: Percentages may not total to 100.0 because of rounding.

Source: Office of Institutional Research/UDEW

UNDERGRADUATE ENROLLMENT BY GENDER
NEWARK CAMPUS
Fall 2005 Through Fall 2009

	2005		2006		2007		2008		2009	
	N	%	N	%	N	%	N	%	N	%
Total - Newark Campus										
Women	9,107	58	8,836	58	8,914	58	8,906	58	9,081	58
Men	6,635	42	6,375	42	6,404	42	6,501	42	6,676	42
College of Agriculture & Natural Resources										
Women	379	60	350	59	411	62	407	61	433	62
Men	257	40	246	41	253	38	262	39	265	38
College of Arts & Sciences										
Women	4,121	59	3,905	60	3,768	59	3,725	59	3,691	60
Men	2,827	41	2,635	40	2,641	41	2,563	41	2,471	40
Alfred Lerner College of Business & Economics¹										
Women	840	39	901	40	982	41	1,280	44	1,232	44
Men	1,331	61	1,372	60	1,386	59	1,626	56	1,554	56
College of Earth, Ocean, & Environment²										
Women	--	--	12	50	22	56	22	47	79	47
Men	--	--	12	50	17	44	25	53	88	53
College of Education & Public Policy										
Women	1,713	85	1,631	86	1,604	87	1,297	93	1,301	93
Men	301	15	275	14	248	13	104	7	95	7
College of Engineering										
Women	259	21	236	20	281	22	274	21	288	19
Men	981	79	970	80	1,005	78	1,062	79	1,222	81
College of Health Sciences										
Women	1,224	74	1,216	74	1,295	73	1,339	74	1,452	73
Men	423	26	436	26	482	27	465	26	538	27
Office of University Studies										
Women	571	53	585	58	551	60	562	59	605	58
Men	515	47	429	42	372	40	394	41	443	42

¹ The Hotel, Restaurant & Institutional Management Department moved from the College of Education & Public Policy to the Alfred Lerner College of Business & Economics in 2008.

² The Geology Department moved from the College of Arts & Sciences to the College of Earth, Ocean, & Environment in 2006, followed by the Geography Department's move from the College of Arts & Sciences to the College of Earth, Ocean, & Environment in 2009.

Source: Office of Institutional Research/UDEW

GRADUATE ENROLLMENT BY GENDER
NEWARK CAMPUS
Fall 2005 Through Fall 2009

	2005		2006		2007		2008		2009	
	N	%	N	%	N	%	N	%	N	%
Total - Newark Campus										
Women	1,769	52	1,809	52	1,807	53	1,802	52	1,889	52
Men	1,665	48	1,637	48	1,598	47	1,646	48	1,745	48
College of Agriculture & Natural Resources										
Women	83	49	96	55	96	57	95	53	98	54
Men	86	51	79	45	73	43	85	47	85	46
College of Arts & Sciences										
Women	672	55	676	56	674	57	677	55	595	54
Men	558	45	539	44	514	43	560	45	512	46
Alfred Lerner College of Business & Economics¹										
Women	194	36	190	37	201	38	223	41	253	41
Men	343	64	322	63	330	62	323	59	357	59
College of Earth, Ocean, & Environment²										
Women	49	49	61	49	58	51	54	46	74	52
Men	52	51	63	51	56	49	64	54	69	48
College of Education & Public Policy										
Women	498	71	509	70	463	69	459	69	482	68
Men	208	29	216	30	208	31	211	31	229	32
College of Engineering										
Women	150	28	137	26	125	25	134	26	135	25
Men	392	72	388	74	383	75	375	74	411	75
College of Health Sciences³										
Women	123	83	140	82	190	85	160	85	252	75
Men	26	17	30	18	34	15	28	15	82	25

¹ The Hotel, Restaurant & Institutional Management Department moved from the College of Education & Public Policy to the Alfred Lerner College of Business & Economics in 2008.

² The Geology Department moved from the College of Arts & Sciences to the College of Earth, Ocean, & Environment in 2006 followed by the Geography Department's move from the College of Arts & Sciences to the College of Earth, Ocean, & Environment in 2009.

³ The Physical Therapy Department moved from the College of Arts & Sciences to the College of Health Sciences in 2009.

Source: Office of Institutional Research/UDEW

ENROLLMENT BY RESIDENCE STATUS
Fall 2005 Through Fall 2009

	2005		2006		2007		2008		2009	
	N	%	N	%	N	%	N	%	N	%
TOTAL STUDENTS	20,982		20,380		20,342		20,500		21,138	
Delawareans	9,136	44	8,618	42	8,295	41	8,038	39	8,278	39
Nonresidents	11,846	56	11,762	58	12,047	59	12,462	61	12,860	61
NEWARK CAMPUS										
Undergraduate	15,742		15,211		15,318		15,407		15,757	
Delawareans	6,474	41	6,044	40	5,883	38	5,613	36	5,678	36
Nonresidents	9,268	59	9,167	60	9,435	62	9,794	64	10,079	64
Graduate	3,434		3,446		3,405		3,448		3,634	
Delawareans	1,112	32	1,088	32	1,047	31	1,041	30	1,113	31
Nonresidents	2,322	68	2,358	68	2,358	69	2,407	70	2,521	69
ASSOCIATE IN ARTS PROGRAM	608		638		665		668		764	
Delawareans ¹	608	100	638	100	665	100	668	100	764	100
PROFESSIONAL & CONTINUING STUDIES	1,198		1,085		954		977		983	
Delawareans	942	79	848	78	700	73	716	73	723	74
Nonresidents	256	21	237	22	254	27	261	27	260	26

¹ Includes children of employees and armed forces personnel stationed in Delaware, and students who are in the process of fulfilling the twelve month durational requirement for Delaware residency.

Source: Office of Institutional Research/UDEW

**RETENTION RATES FOR
ENTERING FIRST-TIME, FULL-TIME FRESHMEN**

NEWARK CAMPUS	2000	2001	2002	2003	2004	2005	2006	2007	2008
Total # of Freshmen	3,128	3,362	3,401	3,433	3,442	3,506	3,252	3,571	3,500
% Retention to 2nd Fall	87.5	88.6	89.9	88.4	88.8	90.3	90.4	91.4	91.2

ASSOCIATE IN ARTS PROGRAM	2004	2005	2006	2007	2008
GEORGETOWN					
Total # of Freshmen	83	58	70	63	76
% Retention to 2nd Fall	61.4	72.4	74.3	90.5	72.4
DOVER					
Total # of Freshmen	47	73	54	71	52
% Retention to 2nd Fall	63.8	75.3	75.9	80.3	73.1
WILMINGTON					
Total # of Freshmen	190	181	191	208	207
% Retention to 2nd Fall	69.5	70.7	72.8	81.2	72.9
TOTAL ASSOCIATE IN ARTS PROGRAM					
Total # of Freshmen	320	312	315	342	335
% Retention to 2nd Fall	66.6	72.1	73.7	82.7	72.8

Note: All entering new freshman cohorts adjusted to comply with IPEDS Graduation Rate Survey Definitions.

Source: Office of Institutional Research

GRADUATION RATES FOR ENTERING FIRST-TIME, FULL-TIME FRESHMEN

NEWARK CAMPUS		2000	2001	2002	2003	2004
Total Number in Cohort		3,128	3,362	3,401	3,433	3,442
% Graduating within Four Years		60.2	63.9	67.1	61.3	61.8
Males		51.6	54.1	58.2	53.9	54.1
Females		65.6	71.0	72.8	66.9	67.3
African-Americans		41.0	43.8	41.1	44.4	38.7
Asians		59.8	57.9	62.0	59.9	51.6
Hispanics		54.3	50.0	66.1	54.5	54.8
Whites		61.9	65.8	69.0	63.3	64.5
Residents		47.6	52.1	55.7	49.4	51.0
Nonresidents		66.8	69.5	73.7	69.1	68.0
% Graduating within Five Years		73.7	75.8	77.9	73.7	74.9
Males		70.1	70.5	72.7	69.4	71.8
Females		75.9	79.7	81.2	76.9	77.1
African-Americans		60.8	61.6	56.8	59.6	52.8
Asians		72.0	72.9	74.1	71.5	67.7
Hispanics		69.1	67.9	71.6	68.5	67.5
Whites		74.9	77.1	79.6	75.3	77.3
Residents		68.0	72.2	72.0	66.4	69.0
Nonresidents		76.7	77.6	82.0	78.5	78.2

ASSOCIATE IN ARTS PROGRAM		2004	2005
GEORGETOWN			
Total Number in Cohort		83	58
% Graduating with AA within Two Years		9.6	12.1
% Graduating with AA within Three Years		18.1	29.3
% Graduating with AA within Four Years		20.5	31.0
DOVER			
Total Number in Cohort		47	73
% Graduating with AA within Two Years		40.4	34.2
% Graduating with AA within Three Years		46.8	52.1
% Graduating with AA within Four Years		48.9	52.1
WILMINGTON			
Total Number in Cohort		190	181
% Graduating with AA within Two Years		21.5	24.5
% Graduating with AA within Three Years		49.2	46.7
% Graduating with AA within Four Years		50.8	51.6
TOTAL ASSOCIATE IN ARTS PROGRAM			
Total Number in Cohort		320	312
% Graduating with AA within Two Years		21.2	24.4
% Graduating with AA within Three Years		40.8	44.8
% Graduating with AA within Four Years		42.7	47.9

Note: Data comply with IPEDS Graduation Rate Survey Definitions.

Associate in Arts Program graduation rates recalculated to reflect July 1 through June 30.

Source: Office of Institutional Research

**DEGREES GRANTED BY COLLEGE AND LEVEL
2004-05 Through 2008-09**

	2005	2006	2007	2008	2009
UNIVERSITY TOTALS	4,502	4,678	4,575	4,591	4,742
Associate's Degrees ¹	14	77	162	188	195
Bachelor's Degrees	3,602	3,683	3,416	3,500	3,569
Master's Degrees	697	696	773	695	727
Doctorates	189	222	224	208	251
College of Agriculture & Natural Resources					
Associate's Degrees ¹	1	1	1	1	2
Bachelor's Degrees	181	164	141	162	153
Master's Degrees	43	39	54	57	48
Doctorates	5	9	3	9	5
College of Arts & Sciences					
Associate's Degrees ¹	13	76	160	187	178
Bachelor's Degrees	1,657	1,750	1,549	1,586	1,564
Master's Degrees	199	179	208	194	175
Doctorates	87	102	102	100	127
Alfred Lerner College of Business & Economics²					
Bachelor's Degrees	571	565	598	557	766
Master's Degrees	168	186	196	164	191
Doctorates	5	3	3	2	7
College of Earth, Ocean, & Environment³					
Bachelor's Degrees	--	--	8	8	9
Master's Degrees	17	10	10	10	10
Doctorates	11	9	7	6	18
College of Education & Public Policy					
Associate's Degrees ¹	0	0	1	0	15
Bachelor's Degrees	584	580	503	547	410
Master's Degrees	162	185	202	174	183
Doctorates	24	40	43	43	39
College of Engineering					
Bachelor's Degrees	200	205	238	238	231
Master's Degrees	62	70	68	60	63
Doctorates	56	59	65	48	49
College of Health Sciences					
Bachelor's Degrees	409	419	379	402	436
Master's Degrees	46	27	35	36	57
Doctorates ⁴	1	0	1	0	6

¹ The University Associate in Arts Program commenced in 2004 and granted its first degrees in 2005-06.

² The Hotel, Restaurant & Institutional Management Department moved from the College of Education & Public Policy to the Alfred Lerner College of Business & Economics in 2008.

³ The Geology Department moved from the College of Arts & Sciences to the College of Earth, Ocean, & Environment in 2006, followed by the Geography Department's move from the College of Arts & Sciences to the College of Earth, Ocean, & Environment in 2009.

⁴ The Physical Therapy Department moved from the College of Arts & Sciences to the College of Health Sciences in 2009.

Note: Graduation terms defined by federal IPEDS standards (July 1 through June 30).

Source: Office of Institutional Research/UDEW

**EMPLOYMENT AND EDUCATIONAL STATUS OF
BACCALAUREATES BY CURRICULUM GROUP
CLASS OF 2008**

Curriculum Group	Number in Class	Number Who Received Survey	Number of Respondents ¹ n	Number of Respondents ¹ %	Full-Time Employment %	Part-Time Employment %	Pursuing Further Education %	Still Seeking Employment %
Agriculture & Natural Resources	159	153	36	23.5	55.6	13.9	22.2	5.6
Arts & Sciences								
Humanities	431	410	81	19.8	63.0	7.4	19.8	8.6
Social Sciences	870	846	191	22.6	64.9	2.6	21.5	9.4
Life & Health Sciences	137	123	60	48.8	53.3	3.3	38.3	3.3
Physical Sciences	150	131	37	28.2	75.7	2.7	21.6	--
Business & Economics ²	610	610	281	46.1	84.7	2.5	5.3	1.4
Engineering ²	243	243	168	69.1	78.6	1.8	15.5	0.6
Health Sciences	368	355	98	27.6	67.3	5.1	23.5	4.1
Human Services, Educ. & Public Policy	440	399	155	38.8	90.3	1.9	5.8	1.9
Marine and Earth Studies	4	4	1	25.0	--	--	100.0	--
2008 University Total³	3,412	3,274	1,108	33.8	75.0	3.3	15.3	3.7

¹ The 2008 Career Plans Survey represents survey respondents from the full baccalaureate graduating class.

² Business & Economics and Engineering distributed survey cards at their respective Convocation Ceremonies therefore the number who received survey is equal to the number in class.

³ Twenty-five (2.1%) of the 1,199 respondents indicated they are not seeking work. University total includes all curriculum groups.
Note: Percentages may not total to 100.0 because of rounding.

Source: Data obtained through the Bank of America Career Services Center and the Office of Institutional Research Career Plans Survey

EMPLOYEES BY ETHNICITY AND EEO CATEGORY
Fall 2005 Through Fall 2009

EEO-6 CATEGORY		2005	2006	2007	2008	2009
Executive/ Administrative/ Managerial	Full-Time - Total	378	376	379	387	393
	White	343	341	346	352	358
	African-American	28	26	23	22	22
	Hispanic	2	2	3	5	5
	Asian	3	4	4	5	4
	Native American	2	3	3	3	3
	Unknown	0	0	0	0	1
	Part-Time - Total	10	14	10	10	11
	White	10	14	10	10	11
	African-American	0	0	0	0	0
	Hispanic	0	0	0	0	0
	Asian	0	0	0	0	0
	Native American	0	0	0	0	0
	Unknown	0	0	0	0	0
Faculty	Full-Time - Total	1,077	1,117	1,117	1,117	1,111
	White	911	938	934	936	915
	African-American	45	51	49	53	54
	Hispanic	27	27	30	27	30
	Asian	90	98	101	98	108
	Native American	4	3	3	3	3
	Unknown	0	0	0	0	1
	Part-Time - Total	33	33	32	36	44
	White	28	28	23	26	31
	African-American	2	2	4	3	3
	Hispanic	0	0	0	2	4
	Asian	3	3	5	5	6
	Native American	0	0	0	0	0
	Unknown	0	0	0	0	0
Professional	Full-Time - Total	974	953	971	967	1,010
	White	788	777	786	782	805
	African-American	84	79	88	96	93
	Hispanic	12	13	17	20	24
	Asian	84	77	76	65	80
	Native American	6	4	4	4	7
	Unknown	0	3	0	0	1
	Part-Time - Total	91	90	94	88	93
	White	79	78	80	73	77
	African-American	3	3	7	5	6
	Hispanic	3	1	1	1	1
	Asian	6	8	6	9	9
	Native American	0	0	0	0	0
	Unknown	0	0	0	0	0

EMPLOYEES BY ETHNICITY AND EEO CATEGORY (Continued)

EEO-6 CATEGORY		2005	2006	2007	2008	2009
Secretarial/ Clerical	Full-Time - Total	623	616	610	618	607
	White	549	534	538	545	537
	African-American	54	57	55	57	53
	Hispanic	12	12	7	6	6
	Asian	4	5	6	6	6
	Native American	4	6	4	4	4
	Unknown	0	2	0	0	1
	Part-Time - Total	63	67	63	63	51
	White	58	62	58	58	47
	African-American	5	5	5	4	4
	Hispanic	0	0	0	1	0
	Asian	0	0	0	0	0
	Native American	0	0	0	0	0
Unknown	0	0	0	0	0	
Technical/ Paraprofessional	Full-Time - Total	112	120	127	128	136
	White	91	98	103	104	109
	African-American	13	13	15	14	16
	Hispanic	1	2	2	2	2
	Asian	4	4	4	5	6
	Native American	3	3	3	3	3
	Unknown	0	0	0	0	0
	Part-Time - Total	17	17	11	20	20
	White	10	8	6	14	15
	African-American	6	5	3	4	3
	Hispanic	0	0	0	0	0
	Asian	1	4	2	2	2
	Native American	0	0	0	0	0
Unknown	0	0	0	0	0	
Skilled Craft	Full-Time - Total	140	143	145	146	146
	White	123	124	124	123	122
	African-American	12	12	13	14	15
	Hispanic	3	5	5	6	6
	Asian	1	1	1	1	1
	Native American	1	1	2	2	2
	Unknown	0	0	0	0	0
	Part-Time - Total	0	0	0	0	0
	White	0	0	0	0	0
	African-American	0	0	0	0	0
	Hispanic	0	0	0	0	0
	Asian	0	0	0	0	0
	Native American	0	0	0	0	0
Unknown	0	0	0	0	0	

**EMPLOYEES BY ETHNICITY AND EEO CATEGORY
(Continued)**

EEO-6 CATEGORY		2005	2006	2007	2008	2009
Service/ Maintenance	Full-Time - Total	439	445	435	445	443
	White	248	251	251	258	257
	African-American	151	147	135	132	133
	Hispanic	21	24	28	29	27
	Asian	13	16	15	20	20
	Native American	6	7	6	6	6
	Unknown	0	0	0	0	0
	Part-Time - Total	8	11	10	11	10
	White	7	10	10	11	9
	African-American	0	0	0	0	0
	Hispanic	1	1	0	0	0
	Asian	0	0	0	0	0
	Native American	0	0	0	0	0
	Unknown	0	0	0	0	1
ALL EMPLOYEES	Full-Time - Total	3,743	3,770	3,784	3,808	3,846
	White	3,053	3,063	3,082	3,100	3,103
	African-American	387	385	378	388	386
	Hispanic	78	85	92	95	100
	Asian	199	205	207	200	225
	Native American	26	27	25	25	28
	Unknown	0	5	0	0	4
	Part-Time - Total	222	232	220	228	229
	White	192	200	187	192	190
	African-American	16	15	19	16	16
	Hispanic	4	2	1	4	5
	Asian	10	15	13	16	17
	Native American	0	0	0	0	0
	Unknown	0	0	0	0	1
TOTAL	3,965	4,002	4,004	4,036	4,075	

Source: Office of Institutional Research

FULL-TIME EMPLOYEES BY GENDER
Fall 2005 Through Fall 2009

	2005	2006	2007	2008	2009
Faculty	1,077	1,117	1,117	1,117	1,111
Male	675	693	681	686	674
Female	402	424	436	431	437
Professionals (Includes Chairpersons)	1,352	1,329	1,350	1,354	1,403
Male	644	637	646	637	651
Female	708	692	704	717	752
Salaried Staff/Hourly	1,314	1,324	1,317	1,337	1,332
Male	479	499	497	493	498
Female	835	825	820	844	834
TOTAL	3,743	3,770	3,784	3,808	3,846
Male	1,798	1,829	1,824	1,816	1,823
Female	1,945	1,941	1,960	1,992	2,023

Source: Office of Institutional Research

**NUMBER OF FACULTY BY RANK AND TENURE STATUS
Fall 2005 Through Fall 2009**

	2005		2006		2007		2008		2009					
	Tenured/ Tenure Track	Non- Tenure Track	Tenured/ Tenure Track	Non- Tenure Track	Tenured/ Tenure Track	Non- Tenure Track	Tenured/ Tenure Track	Non- Tenure Track	Tenured/ Tenure Track	Non- Tenure Track				
Full-Time														
Professor	344	12	356	358	9	367	11	378	370	12	382	368	11	379
Associate Professor	295	20	315	302	24	326	25	322	301	27	328	310	32	342
Assistant Professor	188	99	287	199	105	304	112	298	180	122	302	162	124	286
Instructor	0	118	118	0	119	119	0	118	0	105	105	0	104	104
Lecturer	0	1	1	0	1	1	0	1	0	0	0	0	0	0
Total Full-Time Faculty	827	250	1,077	859	258	1,117	850	267	1,117	851	266	1,117	840	271
Total Part-Time Faculty	5	28	33	4	29	33	4	28	32	6	30	36	3	41
Grand Total	832	278	1,110	863	287	1,150	854	295	1,149	857	296	1,153	843	312
														1,155

Note: Data include regular faculty (active or on sabbatical leave) at the Newark Campus and the Associate in Arts Program. Visiting faculty are excluded.

Source: Office of Institutional Research

TENURE STATUS AMONG FULL-TIME TENURE TRACK FACULTY
Fall 2005 Through Fall 2009

	2005		2006		2007		2008		2009	
	Tenured/ Eligible	% Tenured	Tenured/ Eligible	% Tenured	Tenured/ Eligible	% Tenured	Tenured/ Eligible	% Tenured	Tenured/ Eligible	% Tenured
Professor	344/344	100.0	358/358	100.0	367/367	100.0	370/370	100.0	368/368	100.0
Associate Professor	288/295	97.6	296/302	98.0	293/297	98.7	298/301	99.0	308/310	99.4
Assistant Professor	0/188	0.0	0/199	0.0	0/186	0.0	0/180	0.0	0/162	0.0
Total	632/827	76.4	654/859	76.1	660/850	77.6	668/851	78.5	676/840	80.5

*Key: % Tenured = # Tenured/# Eligible * 100. University policy is to grant tenure at time of promotion to Associate Professor.*

If promotion is not achieved, faculty member is terminated, so there are no tenured faculty at the Assistant Professor level.

Note: Counts include regular faculty (active or on sabbatical leave) on the Newark campus and the Associate in Arts Program. Visiting faculty are excluded.

Source: Office of Institutional Research

AVERAGE TOTAL COMPENSATION OF FULL-TIME FACULTY BY RANK
Academic Year 2005-06 Through 2009-10

	2005-06		2006-07		2007-08		2008-09		2009-10	
	Average	%	Average	%	Average	%	Average	%	Average	%
	Comp.	Increase	Comp.	Increase	Comp.	Increase	Comp.	Increase	Comp.	Increase
	\$	From	\$	From	\$	From	\$	From	\$	From
		Previous		Previous		Previous		Previous		Previous
		Year		Year		Year		Year		Year
Professor	147,516	4.3	154,733	4.9	160,932	4.0	165,800	3.1	171,414	3.4
Associate Professor	106,202	4.2	109,358	3.0	112,828	3.2	116,423	3.2	120,879	3.8
Assistant Professor	86,006	2.9	90,065	4.7	93,262	3.5	99,072	6.2	101,362	2.3
Instructor	69,492	2.5	73,193	5.3	76,568	4.6	80,266	4.5	83,774	4.4

Note: Includes regular full-time faculty and chairpersons.

Total compensation refers to 9-month equivalent salary plus fringe benefits.

Source: Office of Institutional Research/AAUP Annual Survey of Faculty Compensation

**FULL-TIME EMPLOYEES' SALARY
PRINCIPAL SOURCE OF FUNDING**
Fall 2005 Through Fall 2009

	2005	2006	2007	2008	2009
Faculty	1,077	1,117	1,117	1,117	1,111
Paid Principally from Unrestricted Funds	1,035	1,072	1,067	1,062	1,061
% of Total	96.1%	96.0%	95.5%	95.1%	95.5%
Professionals (Includes Chairpersons)	1,352	1,329	1,350	1,354	1,403
Paid Principally from Unrestricted Funds	1,155	1,133	1,166	1,196	1,218
% of Total	85.4%	85.3%	86.4%	88.3%	86.8%
Salaried Staff/Hourly	1,314	1,324	1,317	1,337	1,332
Paid Principally from Unrestricted Funds	1,228	1,234	1,226	1,254	1,264
% of Total	93.5%	93.2%	93.1%	93.8%	94.9%
TOTAL	3,743	3,770	3,784	3,808	3,846
Paid Principally from Unrestricted Funds	3,418	3,439	3,459	3,512	3,543
% of Total	91.3%	91.2%	91.4%	92.2%	92.1%

Note: Unrestricted funds represent basic, allocated, and self supporting fund types.

Source: Office of Institutional Research

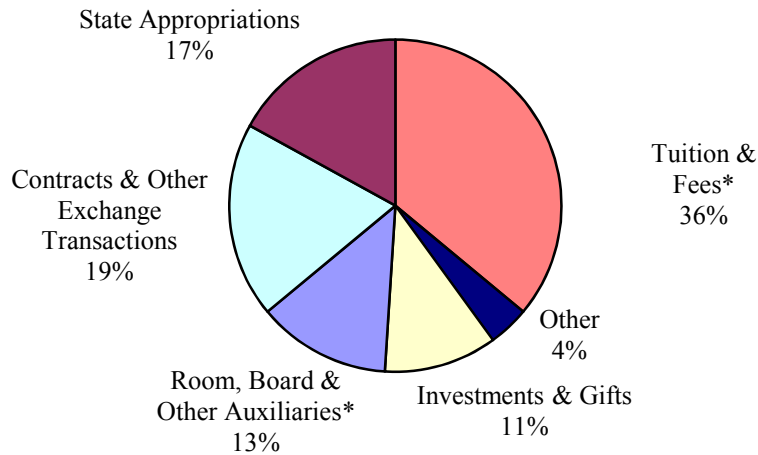
STATEMENT OF OPERATING ACTIVITIES
FY 05 Through FY 09
(Thousands of Dollars)

	FY 05	FY 06	FY 07	FY 08	FY 09
	\$	\$	\$	\$	\$
OPERATING REVENUE:					
Tuition and fees, net of scholarship & fellowship allowance ⁽¹⁾	204,064	210,971	219,900	235,398	260,897
State operating appropriations	109,140	115,666	122,828	127,166	126,744
Contracts & other exchange transactions	116,087	124,168	129,586	136,432	135,371
Room, board & other auxiliaries, net of scholarship & fellowship allowance ⁽¹⁾	73,128	77,568	81,818	88,072	92,929
Investments and gifts	66,337	70,046	78,031	83,526	84,333
Other	16,494	18,735	21,888	21,792	28,207
Total operating revenues and support	585,250	617,154	654,051	692,386	728,481
<i>⁽¹⁾ Scholarship and fellowship allowance</i>					
OPERATING EXPENSES AND TRANSFERS:					
Instruction & academic support	307,471	316,456	334,193	350,736	364,465
Sponsored activities	121,878	136,555	143,917	150,691	154,677
Student services	19,244	20,725	22,202	24,392	26,251
Student aid	4,851	4,846	6,144	5,722	5,827
Institutional	57,927	51,858	57,985	60,451	63,946
Room, board & other auxiliaries	65,062	73,105	76,209	82,999	86,938
Transfers & other	8,817	13,609	13,401	17,395	26,377
Total operating expenses and transfers	585,250	617,154	654,051	692,386	728,481

Source: Assistant Vice President for Finance

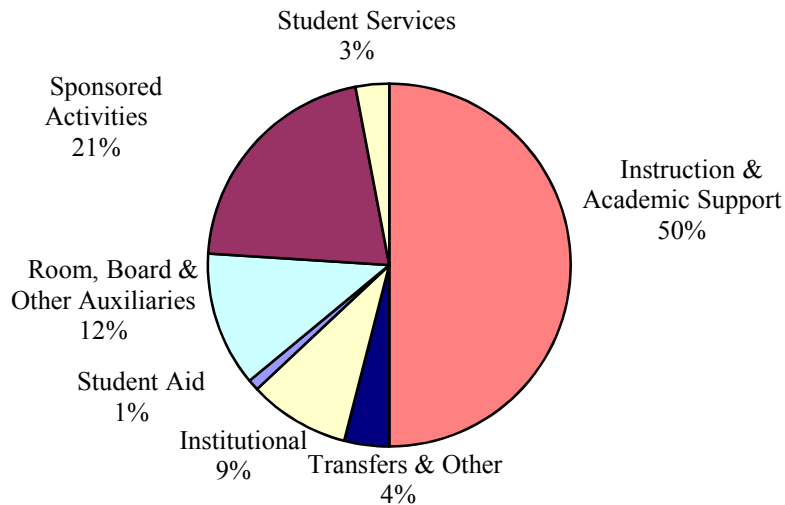
OPERATING REVENUE, EXPENSES AND TRANSFERS *Fiscal Year 2009*

REVENUE (\$728.5 millions)



* Net of Scholarship & Fellowship Allowance

EXPENSES AND TRANSFERS (\$728.5 millions)



Source: Assistant Vice President for Finance

CHANGE IN NET ASSETS
FY 05 Through FY 09
(Thousands of Dollars)

	FY 05	FY 06	FY 07	FY 08	FY 09
	\$	\$	\$	\$	\$
Net assets at beginning of year	1,559,706	1,665,416	1,830,179	2,000,209	1,934,074
Change in net assets:					
Operating transfers	6,338	13,507	14,414	18,797	27,601
Nonoperating activities:					
Net realized and unrealized gains (losses)	84,847	130,388	174,134	(89,844)	(328,939)
Contributions for endowment and buildings	23,384	28,606	14,434	8,985	8,308
State capital appropriations	8,500	7,000	4,600	3,500	-
Net change in asset retirement obligation liability	--	--	(3,093)	(2,972)	(1,256)
Effect of change in adoption of SFAS No. 158	--	--	(30,398)	--	-
Cumulative effect of change in accounting principle	--	(4,440)	--	--	-
Net endowment income and other	(17,359)	(10,298)	(4,061)	(4,601)	(25,051)
Total nonoperating activities	<u>99,372</u>	<u>151,256</u>	<u>155,616</u>	<u>(84,932)</u>	<u>(346,938)</u>
Net assets at end of year	<u>1,665,416</u>	<u>1,830,179</u>	<u>2,000,209</u>	<u>1,934,074</u>	<u>1,614,737</u>
Percent change from prior year	7%	10%	9%	-3%	-17%
Net assets:					
Unrestricted	1,283,941	1,420,511	1,541,474	1,031,166	910,676
Temporarily restricted	116,527	122,034	152,997	593,322	410,205
Permanently restricted	<u>264,948</u>	<u>287,634</u>	<u>305,738</u>	<u>309,586</u>	<u>293,856</u>
Total net assets	<u>1,665,416</u>	<u>1,830,179</u>	<u>2,000,209</u>	<u>1,934,074</u>	<u>1,614,737</u>
Endowment and funds invested as endowment:					
Market value	1,077,100	1,223,200	1,397,500	1,340,100	1,008,400
Percent change from prior year	8%	14%	14%	-4%	-25%

Source: Assistant Vice President for Finance

EXTERNALLY SPONSORED ACTIVITIES
(Thousands of Dollars)

College / Unit	FY 2009				FY 2008 Total \$	Percent Change %
	Instruction & Dept. Rsch. \$	Sponsored Research \$	Public Service \$	Total \$		
EXTERNALLY SPONSORED ACTIVITIES:						
Agriculture & Natural Resources	2,262	12,631	7,180	22,073	22,870	(3.5)
Arts & Sciences	7,898	26,957	2,496	37,351	39,777	(6.1)
Business & Economics	3,315	0	1,740	5,055	4,735	6.8
Earth, Ocean, & Environment	493	10,482	1,462	12,437	11,086	12.2
Education & Public Policy	6,555	2,273	13,554	22,382	21,467	4.3
Engineering	3,055	37,654	568	41,277	43,085	(4.2)
Health Sciences	1,648	4,290	818	6,756	2,713	149.0
Center for International Studies	160	0	715	875	1,798	(51.3)
Delaware Biotechnology Institute	1,668	6,234	0	7,902	10,746	(26.5)
Institute of Energy Conversion	22	1,604	0	1,626	2,051	(20.7)
Other	2,991	855	1,644	5,490	6,042	(9.1)
TOTAL EXTERNALLY SPONSORED ACTIVITIES	30,067	102,980	30,177	163,224	166,370	(1.9)

Source: Assistant Vice President for Finance

**UNDERGRADUATE TUITION, FEES,
ROOM AND BOARD CHARGES PER YEAR
AND THEIR ANNUAL RATE OF INCREASE
1999-00 Through 2009-10**

Year	TUITION AND FEES ¹						BOARD ²		TRADITIONAL DOUBLE ROOM	
	Resident			Nonresident			\$	%	\$	%
	\$	Incr.	%	\$	Incr.	%				
99-00	4,858	3.0	13,228	4.0	2,322	3.1	2,810	4.1		
00-01	5,004	3.0	13,754	4.0	2,392	3.0	2,920	3.9		
01-02	5,290	5.7	14,380	4.6	2,470	3.3	3,064	4.9		
02-03 ³	5,760	8.9	15,290	6.3	2,590	4.9	3,232	5.5		
03-04	6,498	12.8	16,028	4.8	2,690	3.9	3,428	6.1		
04-05	6,954	7.0	16,640	3.8	2,790	3.7	3,668	7.0		
05-06	7,318	5.2	17,474	5.0	2,900	3.9	3,924	7.0		
06-07	7,740	5.8	18,450	5.6	3,030	4.5	4,336	10.5		
07-08	8,150	5.3	19,400	5.1	3,200	5.6	4,748	9.5		
08-09	8,646	6.1	21,126	8.9	3,350	4.7	5,128	8.0		
09-10	9,486	9.7	23,186	9.8	3,600	7.5	5,466	6.6		

¹ Fall 2009 fees include: Student Health - \$484; Student Union - \$228; and Comprehensive Fee - \$234.

² The board charge reflects the largest number of meals available (19 per week).

³ 2002-03 tuition includes a \$120 mid-year increase for the Spring semester.

**UNDERGRADUATE STUDENT CHARGES
AT THE UNIVERSITY OF DELAWARE
AND ADMISSIONS COMPETITORS**

	TUITION & FEES									
	Resident					Nonresident				
	05-06	06-07	07-08	08-09	09-10	05-06	06-07	07-08	08-09	09-10
Univ. Of Delaware	7,318	7,740	8,150	8,646	9,486	17,474	18,450	19,400	21,126	23,186
Penn State Univ.	11,508	12,164	12,844	13,706	14,416	21,744	22,712	23,712	24,940	25,946
Rutgers Univ.	9,221	9,958	10,686	11,540	11,886	16,819	18,463	19,854	21,488	22,518
Univ. of Maryland	7,961	8,046	7,969	8,005	8,053	20,285	21,485	22,208	23,076	23,989
Univ. of Virginia	7,180	8,035	8,690	9,490	9,862	23,924	25,959	27,705	29,572	31,420
Va. Polytech. Inst.	6,378	6,973	7,397	8,198	8,605	17,717	18,929	19,605	20,655	21,488

	ROOM & BOARD									
	Resident					Nonresident				
	05-06	06-07	07-08	08-09	09-10	05-06	06-07	07-08	08-09	09-10
Univ. Of Delaware	6,824	7,366	7,948	8,478	9,066	6,824	7,366	7,948	8,478	9,066
Penn State Univ.	7,060	7,400	7,750	8,270	8,790	7,060	7,400	7,750	8,270	8,790
Rutgers Univ.	8,838	9,312	9,762	10,232	10,676	8,838	9,312	9,762	10,232	10,676
Univ. of Maryland	8,075	8,562	8,854	9,109	9,377	8,075	8,562	8,854	9,109	9,377
Univ. of Virginia	6,389	6,909	7,435	7,820	8,290	6,389	6,909	7,435	7,820	8,290
Va. Polytech. Inst.	4,456	4,766	5,106	5,476	5,824	4,456	4,766	5,106	5,476	5,824

	TOTAL INSTITUTIONAL COSTS									
	Resident					Nonresident				
	05-06	06-07	07-08	08-09	09-10	05-06	06-07	07-08	08-09	09-10
Univ. Of Delaware	14,142	15,106	16,098	17,124	18,552	24,298	25,816	27,348	29,604	32,252
Penn State Univ.	18,568	19,564	20,594	21,976	23,206	28,804	30,112	31,462	33,210	34,736
Rutgers Univ.	18,059	19,270	20,448	21,772	22,562	25,657	27,775	29,616	31,720	33,194
Univ. of Maryland	16,036	16,608	16,823	17,114	17,430	28,360	30,047	31,062	32,185	33,366
Univ. of Virginia	13,569	14,944	16,125	17,310	18,152	30,313	32,868	35,140	37,392	39,710
Va. Polytech. Inst.	10,834	11,739	12,503	13,674	14,429	22,173	23,695	24,711	26,131	27,312

Source: Data obtained through the Office of Institutional Research Survey of Undergraduate Charges

BUILDING INVENTORY

	Newark	All Sites
Academic		
Major Classrooms & Laboratories	48	54
Farm/Auxiliary	86	130
Other Special Use	33	39
Physical Education	7	7
Total Academic	174	230
Student Residence and Service		
Residence Halls (Major Residence Hall complexes = 11)	40	44
Other Housing	65	95
Dining Halls	5	5
Student Activities	18	18
Total Student Residence & Service	128	162
Administrative		
General Services	25	29
Plant Operations & Services	20	23
Total Administrative	45	52
TOTAL BUILDINGS	347	444

Source: General Accounting
(Data as of September 1, 2009)

LAND INVENTORY

ACREAGE OWNED	
New Castle County	
Newark Campus Total	969
Wilmington	34
Other	168
Total New Castle County	1,171
Kent County	
Dover	5
Clayton	297
Total Kent County	302
Sussex County	
Georgetown Substation	347
Rehoboth	141
Lewes	69
Indian River	10
Total Sussex County	567
TOTAL ACREAGE	2,040

Source: General Accounting
(Data as of September 1, 2009)

UNIVERSITY LIBRARY

Facilities and Services

The University of Delaware Library includes the Morris Library, where the main collection is housed, three branch libraries located in Newark, the Agriculture Library, the Chemistry Library, the Physics Library and a fourth branch library, the Marine Studies Library in Lewes, Delaware.

The collections of the University of Delaware Library parallel the University's academic interests and support all disciplines. Books, periodicals, electronic journals, databases, microforms, government publications, and software, maps, manuscripts, media, and Internet access provide a major academic resource for the University of Delaware, the surrounding community, the State of Delaware, and the nation.

The University of Delaware Library is a depository library for U.S. government publications, a patent depository for U.S. patents and a repository for State of Delaware publications. Library staff members provide a wide range of services including reference assistance, circulation, interlibrary loan, instructional programs, assistance to users with disabilities, and assistance to faculty, staff, and students in the Student Multimedia Design Center.

The Morris Library, the main library where the main collection is housed, seats over 3,000 persons. The University of Delaware Library is a member of the Association of Research Libraries, the Center for Research Libraries, CIRLA (the Chesapeake Information and Research Library Alliance), and PALINET through which it is connected online to OCLC, the Online Computer Library Center.

For Library hours, call 302-831-BOOK or check the Library Website at:
www.udel.edu/library

Size of Collections (2008/2009)

Books and bound periodicals.....	over 2,800,000
Microforms.....	over 3,400,000
Databases (titles in Databases list).....	over 270
Electronic and print journals including newspapers to which the Library provides access.....	over 30,000
Other resources (DVDs, maps, etc.).....	over 600,000
Linear feet of manuscripts and archives.....	over 5,300
Subject guides to Internet resources.....	over 120

Use Statistics (2008/2009)

Items loaned.....	over 400,000
Items used on site.....	over 110,000
Individuals entering the Morris Library.....	over 850,000
Virtual visits on Library Website.....	over 1,600,000

Electronic Library Resources

The University of Delaware Library provides online electronic access to networked and digital information including: journal article references and abstracts; full-text electronic articles; a full-text encyclopedia; government information; thousands of electronic journals; maps and many other items. Databases provide access to more than 270 networked databases for University of Delaware faculty, students, and staff. The Library Website is accessible at:

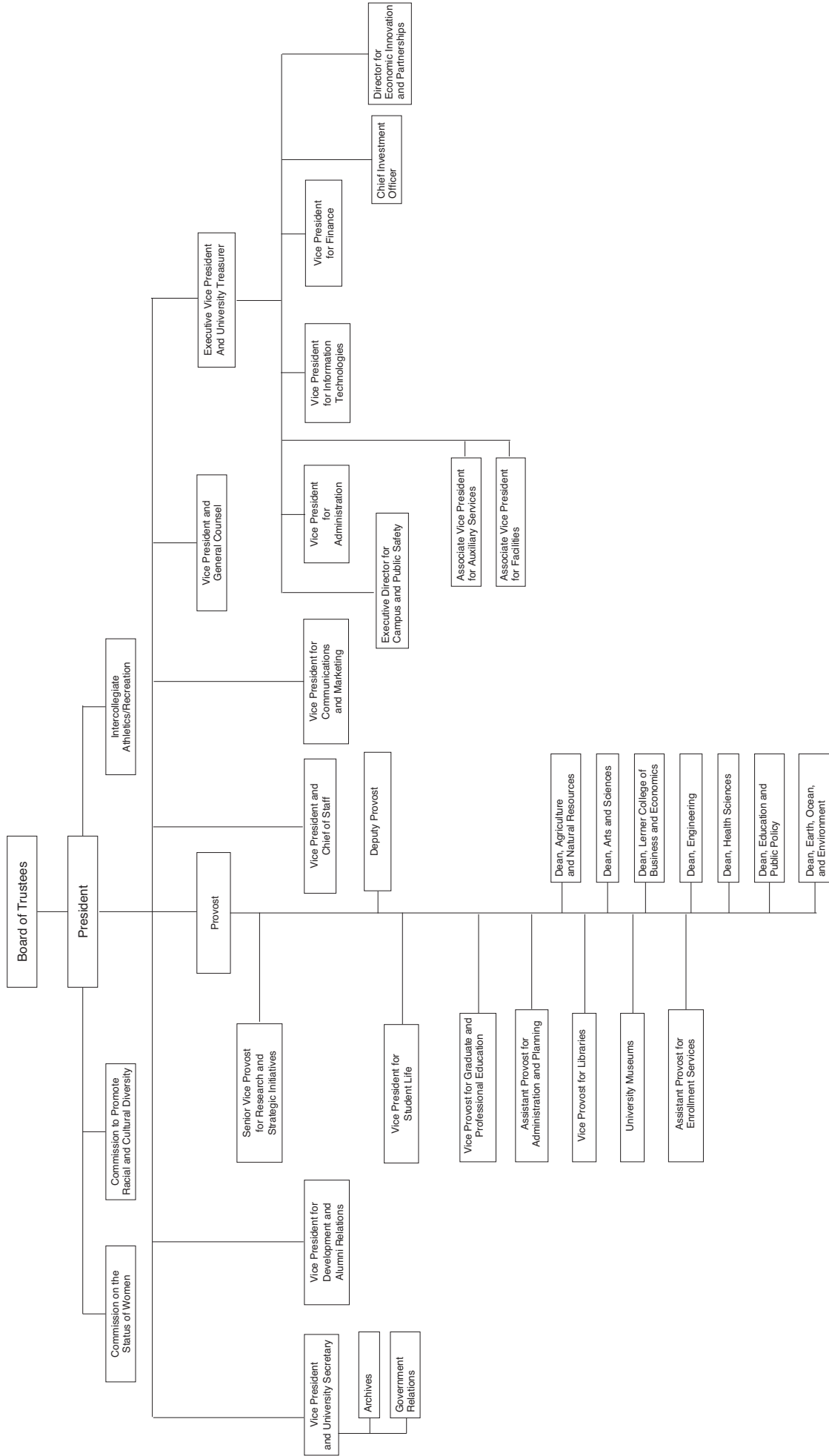
www.udel.edu/library

DELCAT is the University of Delaware Library online catalog and contains information about the library collection and also provides links to electronic journals and other resources. DELCAT may be accessed from anywhere in the world via the Web.

The Library Website serves as a gateway research tool and provides gateway access to electronic resources on the Web including electronic access to resources that are locally licensed for University of Delaware faculty, students, and staff only. The Library Website is also available from the University of Delaware Website (www.udel.edu).

In fall 2008, the University of Delaware Library was one of the first libraries in the nation to implement WorldCat Local, the world's largest network of library-based content and services. WorldCat Local encompasses the holdings of over 10,000 libraries across the world, including the University of Delaware Library. Now, in a single search, users can easily identify a broad array of high-quality research materials. With a simple click, users can change the default interface to German, Spanish, French, Dutch, or Chinese. WorldCat Local was enthusiastically received by students.

The Morris Library provides seating for more than 3,000 persons; wireless access in most areas; special purpose space for computer-based systems; more than 200 computer workstations accessible to users; more than 200 laptop connections for University of Delaware users to connect personal laptops (including all graduate student carrels); the Student Multimedia Design Center; a current periodical reading room; self-service photocopiers; microform reader/printers including a digital microform workstation; a large reserve reading room; small research studies for which faculty may request use; a GIS workstation; special equipment and areas to assist users with disabilities; a media area and viewing room; small group study rooms for student use; a handsome Special Collections area including an exhibition gallery and a reading room with a controlled environmental system for rare materials; and many other areas and services.



UNIVERSITY OF DELAWARE REGIONAL, NATIONAL AND SPECIALIZED ACCREDITORS

Accreditation Board for Engineering and
Technology
Accreditation Association for Ambulatory
Health Care, Inc.
Administration on Developmental
Disabilities
American Association of Health Education
American Association of School Librarians
American Chemical Society's Committee on
Professional Training
American Council on the Teaching of
Foreign Languages
American Dietetic Association
American Library Association
American Physical Therapy Association
American Psychological Association
Association for Childhood Education
International
Association for Educational
Communications and Technology
Association of Small Business Development
Centers
Association of University Centers on
Disabilities
Association to Advance Collegiate Schools
of Business International
Commission on Accreditation of Allied
Health Education Programs
Commission on Accreditation of Physical
Therapy Education
Commission on Collegiate Nursing
Education
Commission on the Accreditation of
Athletic Training Education Programs
Commission on the Accreditation for
Dietetics Education (CADE)
Council for Exceptional Children
Council for Standards for Human Services
Education

Educational Leadership Constituent Council
Engineering Accreditation Commission of
Accreditation Board for Engineering and
Technology
Institute of Food Technologists
International Association of Counseling
Services, Inc.
International Reading Association
Joint Review Committee for Athletic
Training
Middle States Commission on Higher
Education
National Accrediting Agency for Clinical
Laboratory Sciences
National Association for Sport and Physical
Education
National Association for the Education of
Young Children
National Association of School
Psychologists
National Association of Schools of Music
National Association of Schools of Public
Affairs and Administration
National Council for Accreditation of
Teacher Education
National Council for the Social Studies
National Council of Teachers of English
National Council of Teachers of
Mathematics
National League for Nursing Accrediting
Commission
National Science Teachers Association
Teachers of English to Speakers of Other
Languages, Inc.
Technology Accreditation Commission of
Accreditation Board for Engineering and
Technology

AN EQUAL OPPORTUNITY/AFFIRMATIVE ACTION EMPLOYER—The University of Delaware is committed to assuring equal opportunity to all persons and does not discriminate on the basis of race, color, gender, religion, ancestry, national origin, sexual orientation, veteran status, age, or disability in its educational programs, activities, admissions, or employment practices as required by Title IX of the Education Amendments of 1972, Title VI of the Civil Rights Act of 1964, the Rehabilitation Act of 1973, the Americans with Disabilities Act, other applicable statutes and University policy. Inquiries concerning these statutes and information regarding campus accessibility should be referred to the Affirmative Action Officer, 305 Hulliher Hall, (302) 831-2835 (voice), (302) 831-4563 (TDD).