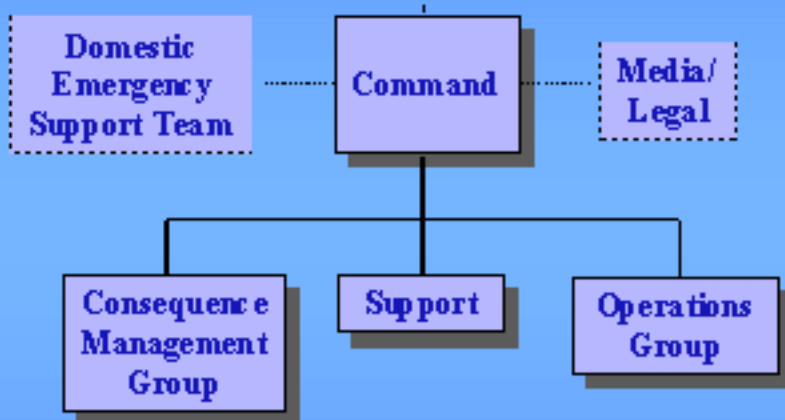
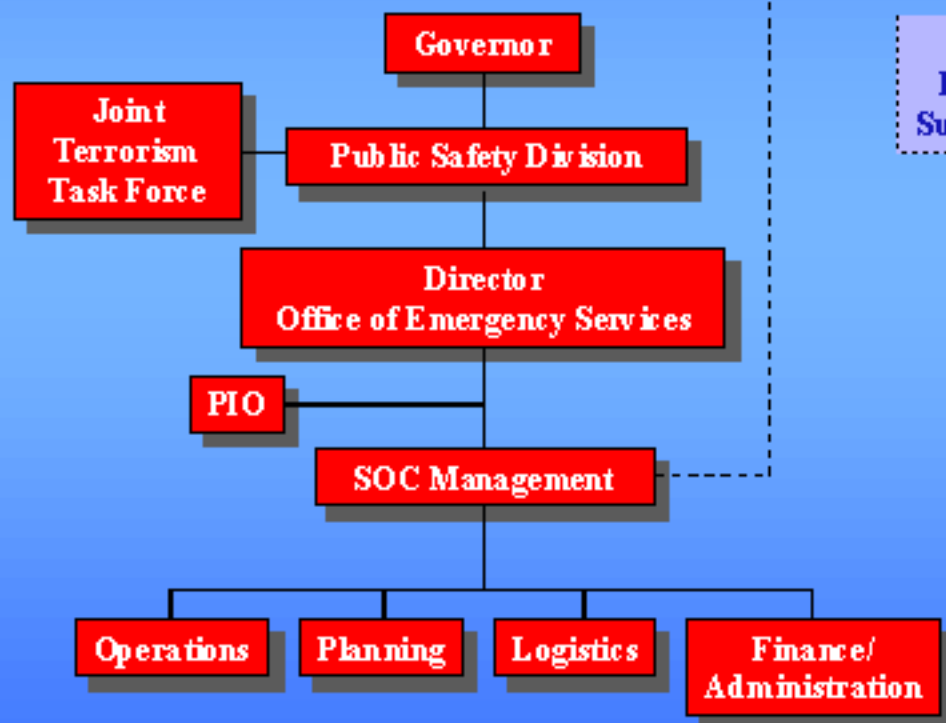




Joint Operations Center

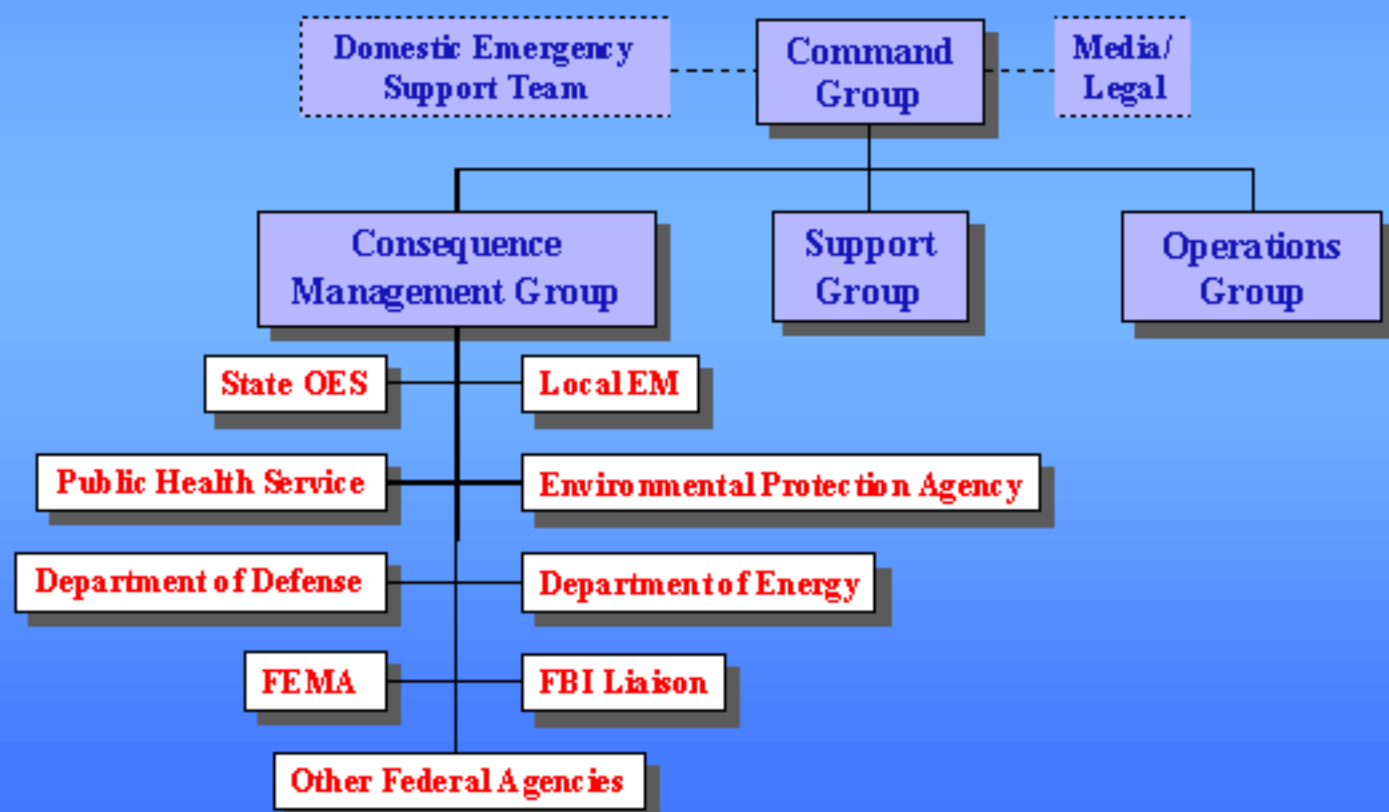
State Organization

JOC Organization



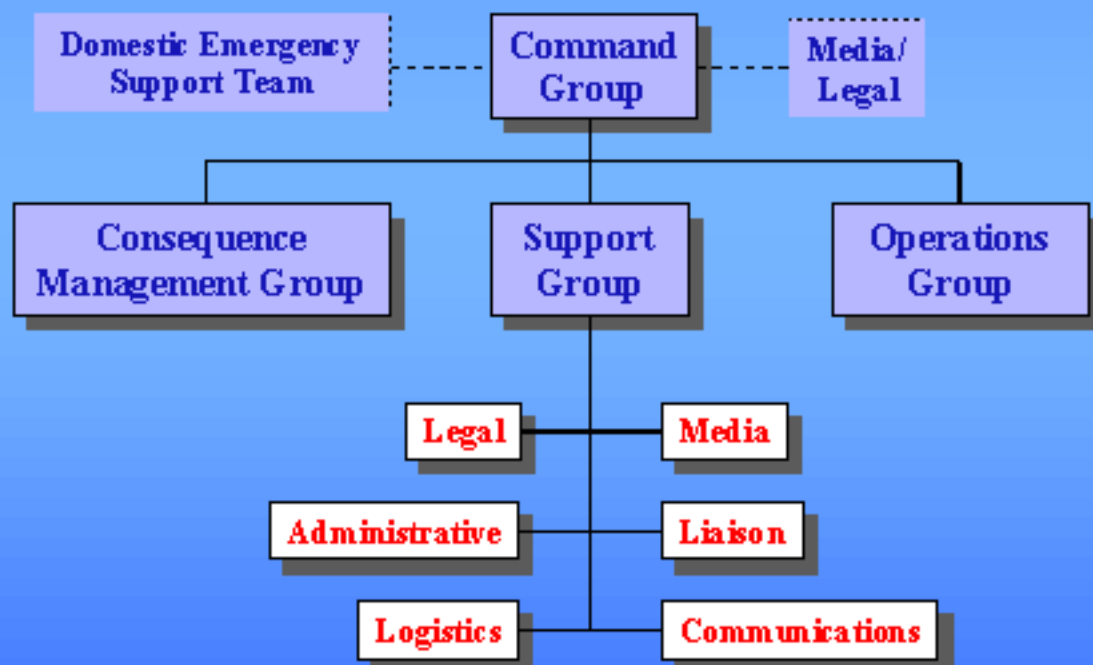
Joint Operations Center

JOC Organization



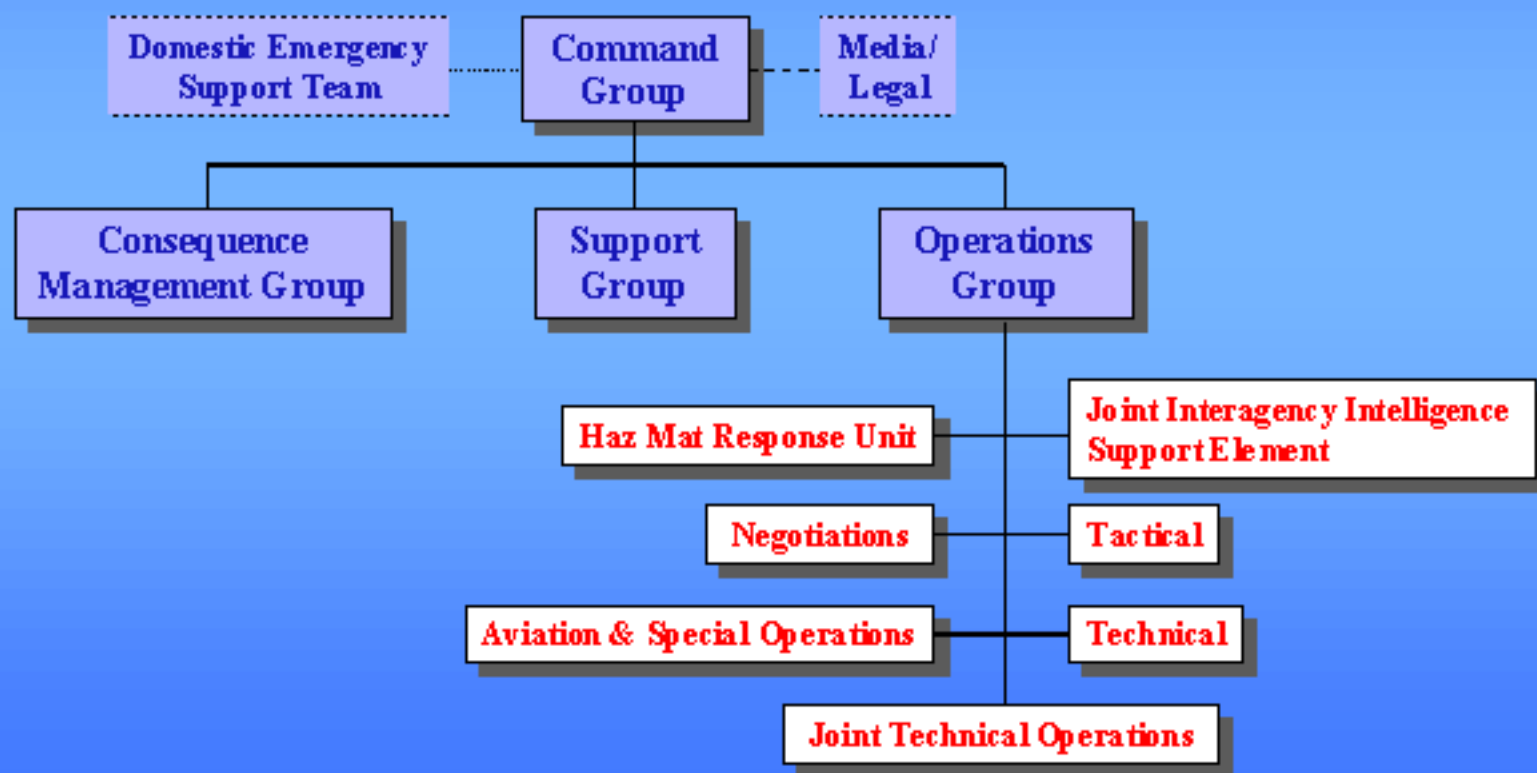
Joint Operations Center

JOC Organization



Joint Operations Center

JOC Organization



ORGANIZATION

GOVERNOR'S OFFICE

SECRETARY OF MILITARY AFFAIRS
AND PUBLIC SAFETY

SUPERINTENDENT WEST VIRGINIA
STATE POLICE

COORDINATION
Director
Office of Emergency Services

LOGISTICS
Adjutant General
National Guard

THREAT ASSESSMENT TEAM
To be appointed by Governor

THREAT MANAGEMENT TEAM
State Police

CRISIS MANAGEMENT

Function	FEDERAL AGENCIES						STATE AGENCIES & VOLUNTEER ORGANIZATIONS													LOCAL GOVERNMENT												
	Alcohol, Tobacco, and Fire Arms	Department of Defense	Department of Energy	Department of Health and Human Services	Environmental Protection Agency	Federal Bureau of Investigation	Federal Emergency Management Agency	Administration	Attorney General	Bureau for Public Health	Corrections	Education	Emergency Services	Forestry	Geological Survey	Highways	National Guard	Natural Resources	Natural Resources	State Fire Marshal	State Police	American Red Cross	Civil Air Patrol	RACES	Emergency Management Agency	Emergency Medical Services	Fire Service	Hazardous Materials Teams	Police/Sheriff	Public Health	Public Works	
Law Enforcement	S	S				C P											S	S	S	P											P	
WMD Disposal	P																			P	P						P					
Firefighting/Haz Mat			X		P																							P				
Emergency Medical (Material/Agent ID)				X					P								S					S									P	
Hostage rescue/negotiation	S	S				P														P											P	
Communications							P								S	S				S		X	X		P							
Warning						P														P											P	
Intelligence/Threat Assessment						P			S						S		S		S	P					S						P	
Evacuation/Sheltering											S	S					S					P			S							
Security	S	S														S	S			P											P	
Public Information							P																		P							

C – Overall Command; P – Primary, S – Support, X – Special Capabilities

CONSEQUENCE MANAGEMENT

Function	FEDERAL AGENCIES							STATE AGENCIES & VOLUNTEER ORGANIZATIONS														LOCAL GOVERNMENT												
	Alcohol, Tobacco, and Fire Arms	Corps of Engineers	Department of Defense	Department of Energy	Department of Health and Human Services	Environmental Protection Agency	Federal Bureau of Investigation	Federal Emergency Management Agency	Administration	Attorney General	Bureau for Public Health	Corrections	Education	Emergency Services	Environmental Protection	Forestry	Geological Survey	Highways	National Guard	Natural Resources	State Fire Marshal	State Police	American Red Cross	Civil Air Patrol	RACES	Emergency Management Agency	Emergency Medical Services	Fire Service	Hazardous Materials Teams	Police/Jeriff	Public Health	Public Works		
Law Enforcement	S					P					S								S	S		P										P		
Firefighting																S			S		P							P						
Hazardous Materials				X	X	P																							P					
Search & Rescue			S																S	S	P		X					P						
Emergency Medical			S		P					P									S			S					P	S				S		
Communications			S				P						P						S				X	X		P				S				
Intelligence					P														S		P									P				
Evacuation & Sheltering			S									S	S						S		S		P											
Security/Traffic Control			S																S			P								P				
Continuity of Government									P																									
Public Information							P						P													S								
Resource Management							P						P													P								
Debris Removal		P	S																S														P	
Damage Assessment		P					S						P								S		S										P	
Transportation			P															P	S			S		S									P	

C - Overall Command; P - Primary; S - Support; X - Special Capabilities