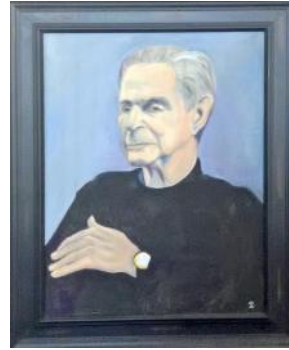




March 2017

Expanding Opportunities at Osher

Last December Ivar ('Bud') Lundgaard died at age 96. At Osher and its predecessor, The Academy of Lifelong Learning, Bud taught classes in philosophy, religion, symphonic music and science. He had been Council Chair and spearheaded a fund-raising campaign. In 2010, his wife, Susan Duer, set up a scholarship fund in his honor. The scholarship fund makes OLLI membership available regardless of ability to pay



Painted by Ellen Strober

In a December 2015 letter written to a man who had donated to the fund, he outlined the opportunities at OLLI.

Most men that we know or know of lead good lives. They finish high school, get a college degree, get a job and pay off their college debts. They get married, take out a mortgage and buy a house. They have two kids and spend the next 22 years buying clothes for them and their wife, mowing the lawn and taking out the garbage. After they get the kids through college they retire, have their right hip replaced, get caught going through a red light, start to get obese and wonder when the kids are going to leave the house. Good life. Great job. Anything else?

You bet there is! They go through the door at the Osher Institute and a whole new world opens up. They learn Spanish. They learn to enjoy classical music. They finally get to believe in evolution. They find out Socrates was a real smart guy. They learn to read Chinese and lots more. They make a lot of wonderful friends and they find their lives fulfilled.

If you feel as Bud did and have the opportunity, consider a gift to the Lundgaard or Reilly scholarship funds that open OLLI to all regardless of income.

Noteworthy

- Fees for 2017/2018 remain the same. Budget details (page 2)
Focus on literature and writing (page 3)
Service dog Shakespeare (page 4)
Saving on dental care (page 4)
Ecology and the ECO Team (page 5)

Weather closings

Osher office 302-573-4417

www.lifelonglearning.udel.edu/wilmington/

WDEL 1150AM, 101.7FM



How to give to OLLI

By check—Please make all checks payable to the 'University of Delaware' and note that the purpose is for the Osher Lifelong Learning Institute in Wilmington and which fund you wish to support.

Besides the Lundgaard and Reilly scholarship funds there are:

The OLLI Gift Fund, which supports current program needs, such as program supplies and equipment replacement.

The OLLI-Wilm Future Fund, which supports capital improvements at Arsht Hall.

More information on how to give may be found on page 31 of the fall catalog or by going to the OLLI Wilmington website (http://www.lifelonglearning.udel.edu/wilmington/) and clicking the Renewing the Dream logo on the left.

## Financial Report— FY18 Budget by Isabelle Husbands and Phil Weinberg

A comparison of the fiscal year FY2018 budget, which takes effect July 1, 2017, and the FY2017 budget, is shown at the right.

The charges for individual fees remain the same as those experienced in the fiscal years 2015, 2016 and 2017.

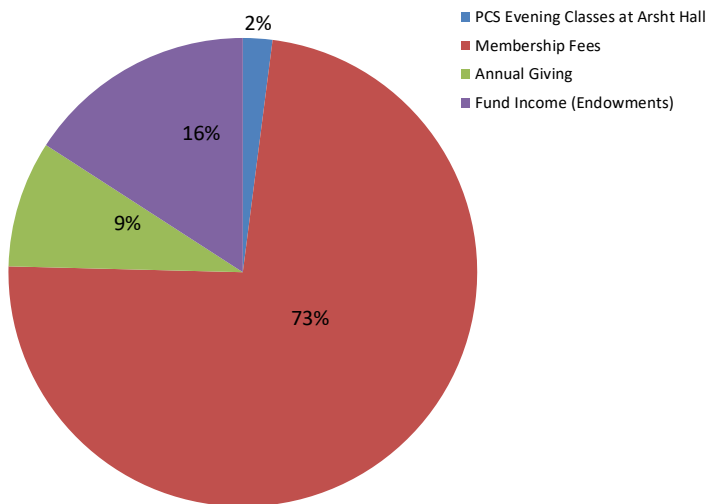
The income increase is anticipated largely because of a projected increase in membership enrollment.

The increase in space rental is due to the fact that Conference Services may no longer be a participant in the use of Arsht Hall. The increase in salaries is due to additional personnel. Other expense changes are based on historical knowledge.

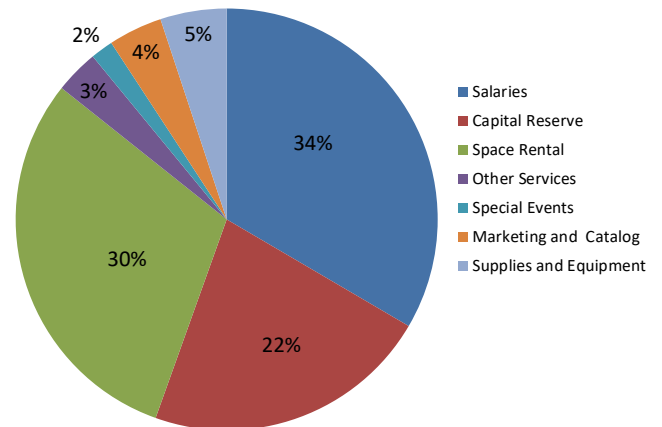
It should be noted that thanks to the generosity of past and present members, we have a significant endowment which will allow us to use some of the income these funds generate to defray the increased cost of operations. If Conference Services no longer shares Arsht Hall. Professional and Continuing Services will support use of Arsht Hall in the evening for non-credit courses by contributing to building expenses.

	FY18 Budget	FY17 Budget	% Change	FY18 % of Budget
<b>REVENUES</b>				
PCS Evening Classes at Arsht Hall	\$ 30,000	\$ -		2.0%
Membership Fees	\$ 1,084,065	\$ 1,044,810	3.8%	73.4%
Annual Giving	\$ 129,077	\$ 138,253	-6.6%	8.7%
Fund Income (Endowments)	\$ 234,430	\$ 190,841	22.8%	15.9%
<b>TOTAL INCOME</b>	<b>\$ 1,477,572</b>	<b>\$ 1,373,904</b>	<b>7.5%</b>	<b>100.0%</b>
<b>EXPENSES</b>				
Salaries	\$ 494,090	\$ 446,146	10.7%	33.4%
<b>Facilities:</b>				
Capital Reserve	\$ 325,500	\$ 366,198	-11.1%	22.0%
Space Rental	\$ 446,700	\$ 353,550	26.3%	30.2%
Other Services	\$ 49,552	\$ 46,618	6.3%	3.4%
<b>Total Facilities</b>	<b>\$ 821,752</b>	<b>\$ 766,366</b>	<b>7.2%</b>	<b>55.6%</b>
Special Events	\$ 25,578	\$ 28,000	-8.7%	1.7%
Marketing and Catalog	\$ 61,059	\$ 44,262	37.9%	4.1%
Supplies and Equipment	\$ 75,093	\$ 89,130	-15.7%	5.1%
<b>TOTAL EXPENSES</b>	<b>\$ 1,477,572</b>	<b>\$ 1,373,904</b>	<b>7.5%</b>	<b>100.0%</b>

**% of FY18 Budget Revenue**



**% of FY18 Budget Expenses**



**Focus on Literature and Writing** by Susan Arruda

Remember back in high school or college when you had to read and discuss books, short stories, plays and poetry? Some brilliant kid in the class would give the meaning of the reading, and you would wonder "What's she talking about?" Now is the time to re-read and discuss these classic works of literature, and also modern stories, without the pressure of getting a grade.

The area of Literature covers everything from the classics to contemporary literature. Classics such as the *Iliad*, *Odyssey*, *Aeneid*, and *Paradise Lost* are read and discussed in OLLI classes, in addition to the works of the Bronte sisters. More modern authors include John Steinbeck and Ann Tyler. We look at the Navajo culture through its literature, as well as folk tales, myths and fairy tales from the sea. There are also courses on mysteries, short stories, and sci-fi literature.

If you like to learn about great books of all times, then Great Books is the course for you.

The works of famous poets - Gerard Manley Hopkins, Dylan Thomas, Percy Bysshe Shelley and new poets are explored.

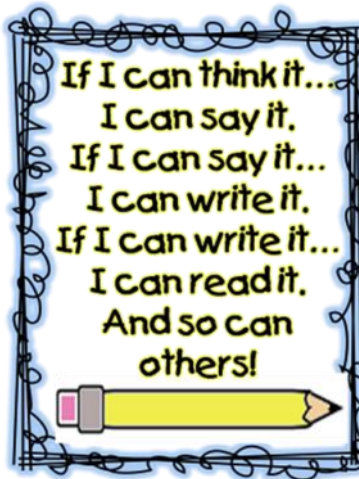
We can't forget plays and playwrights – see videos of plays from Shakespeare, read *Death of a Salesman* and *The Crucible* by Arthur Miller. Articles from periodicals such as *The New Yorker* are covered in an on-going course.

These literature classes enable participants to delve into the life and times of these authors and poets to see what inspired them.

For many people, the last time they wrote seriously was in high school or college – again for a grade! Many of us are frustrated writers, and you can really shine at OLLI! I took *Yesterday for Tomorrow*, a course in which the writer (me) enjoys the pleasure of memory writing. *Write Now!* and *Your Story Painted in Words* allow writers an opportunity to chronicle memorable moments in their lives. Workshops in writing and poetry let writers write and share their writings for critique (gently, of course) from their classmates.

*Write Now!* and *Your Story Painted in Words* allow writers an opportunity to chronicle memorable moments in their lives. Workshops in writing and poetry let writers write and share their writings for critique (gently, of course) from their classmates.

READ, WRITE, CREATE, EXPLORE!



**OLLI Member, Bishop Aretha Morton , Honored.**



Bishop Morton and Wilmington Mayor Mike Purzycki at the Del Tech celebration

Delaware Tech celebrates Black History Month by recognizing a member of the community for outstanding personal and professional achievements. On February 21, the honor went to Bishop Aretha Morton. In 1983, she dared to buck male opposition to become the first woman to pastor at a Baptist church in Delaware. She was also the first woman and first African-American to be named Chaplain of the Wilmington Fire Department.

This honor follows one she received last July, when the 500 block of Washington St., the site of the Tabernacle Full Gospel Baptist Church where she pastored, was renamed in recognition of her years of community service.



## New Dog on Campus by Judy Reese and Lenore Forman

OLLI has a new service dog on campus for spring semester 2017. Shakespeare is a Bouvier des Flanders, a big dog with a big job, coming from a long line of service dogs. He is a friendly, well behaved dog, but he is BIG. Shakespeare and his partner, Judy Reese, will be taking courses this semester, so please do not be surprised to see them around.



In class, they will try to occupy an aisle seat, near the back of the classroom, on the side where the door is located. Shakespeare does not fit in the row in front of his

partner, thus an aisle seat. Sitting on the side with the door will allow them to exit easily if the need arises. Below are some tips regarding what to do when encountering any service animal.

### Service Dog Etiquette:

- Smile and be polite to the service dog's handler, but most of all:
- Do not pet the service dog.
- Do not distract the service dog in any way.
- Please ignore the service dog entirely. You're not being rude if you don't acknowledge the service dog's presence.
- Do not ask what is wrong with the handler to require a service dog. "Invisible" disabilities can be as serious as those that are obvious.

If interested in learning more about service animals please check out Canine Partners for Life, [K94Life.org](http://K94Life.org) (in Chester County), and Main Line Deputy Dog, [MLDD.org](http://MLDD.org) (Malvern and Villanova), for additional information. These are two very reputable organizations in our area that can always use donations and volunteers. The major difference is that Canine Partners breeds their own service animals and utilizes a pups-in-prisons program, while Main Line Deputy Dog trains mostly rescue dogs. It takes about two years, or more, to train a service dog properly.

## A Choice on Dental Care by Lee Kaser, advisor to Council

A year ago, I was facing a lot of dental work. I discussed it with my private dentist, and said that I was considering going to U. of Pennsylvania Dental School in Philadelphia. My former long-time dentist (now deceased) was a Clinical Professor there. My private dentist said, "You can do that. It takes more time but you will save a lot of money." I have time, if I choose to use it that way. He agreed to send my X-rays to Penn if I went into their program. I applied, was accepted, and assigned a "dentist," an advanced student working toward graduation in May, 2017, with both DMD and MD degrees. He coordinates my treatment program. All work is closely supervised by faculty in whichever Penn specialty clinic the work is done (they have all the specialties I know of) and is performed by either my assigned dentist, a resident in advanced training, or a faculty dentist, and I've seen plenty of each so far.

What are the upsides? My cost has been less than half what it would be with a private dentist. Penn Dental is highly selective - they accept only about 5% of college graduate applicants. You will also help train the next generation of top-drawer dentists. Any emergencies are promptly handled - I had an emergency extraction done within four hours of my call.

What are the downsides? Time and travel. A typical appointment is 3-4 hours, either 8 a.m. or 1 p.m. from Tuesday to Thursday, and it takes me about an hour each way to drive between Hockessin and the school at 40th and Walnut. Penn subsidizes parking in their garage a five minute walk away.

If this program sounds interesting, you can visit Penn's website or check other dental schools that are convenient for you.



**Distance Viewing at Osher**  
by Ken Mulholland

Distance Viewing allows you to view classes you missed at home or take courses offered in previous semesters.

This semester videos of *Truman: Guns and Butter*; *Cold War, Part IV*; *Scientific Perspectives on Healthy Aging* and *Navajo Mysteries and Culture* are being posted weekly. See *This Week* for the link.

**Reduce, Reuse, Recycle  
Water Refilling Station**

OLLI Council has approved replacement of all water fountains with water filling stations which will take place in the coming year. The filling station at the north end of the first floor (between Room 117 and Room 124/125) is available now.

Why use refillable bottles?

Keep disposable bottles out of landfills where it takes a disposable bottle 1,000 years to biodegrade.

Save money. Some bottled water is filtered tap water.

Taste. The water from the filling station is filtered to remove chemicals that cause bad taste.

**Recycling**

Keep up our improvement in recycling by keeping coffee cups out of the blue recycle bins. Locations to recycle hazardous materials and electronics are posted on the bulletin board.

**More Ideas for a Sustainable Lifestyle**

Come to a Friday lunch meeting of the **ECO TEAM** in Room 114 to learn more about recycling and other green behavior.



**2017**

- Mon., May 15 to Fri., May 19** Biltmore Estate, Asheville, NC
  - Mon., June 19 to Thurs., June 22** Spotlight on Pittsburgh
  - Sun., July 16 to Sun., July 23** Colorado Rockies and Trains, Mesa Verde National Park
  - Tues., July 18** Afternoon Cabaret by the Sea, Point Pleasant, NJ
  - Wed., Aug. 16 to Wed., Aug. 23** Spotlight on London
- For information on these trips and New York and Washington, DC trips, visit the Travel Desk in the Lobby on Monday, Tuesday and Thursday, 11:45 a.m. – 12:30 p.m.*

**REP Theatre**



The Resident Ensemble Players will put on two more plays at the Roselle Arts Center in Newark:

*The Elephant Man* by Bernard Pomerance, March 2–March 19, 2017

*Tartuffe* by Molière, April 20–May 2, 2017

More information and purchases are available at: [www.rep.udel.edu](http://www.rep.udel.edu) or call 302-831-2204.

**Metropolitan Opera Trips**

The UD Department of Music runs bus trips to select performances of the Metropolitan Opera. Buses leave from Clayton Hall in Newark at 7 a.m. and from Arshat Hall at 7:30 a.m.

*Roméo et Juliette*, Saturday, March 18, 2017

*Cyrano de Bergerac*, Saturday, May 6, 2017

Further information : [www.udel.edu/002636](http://www.udel.edu/002636).

**Special Events Wednesdays  
12:45 to 1:45 p.m. in Room 105  
Announcements at 12:40 p.m.**

These programs are a benefit for members only of the Osher Lifelong Learning Institute at the University of Delaware in Wilmington. Feel free to attend each week or select the programs that most interest you.

**March 8—Pluto: Saving the Best for Last**  
Harry Shipman, Professor, Physics and Astronomy, University of Delaware

**March 15—The Presidential Transition**  
Ted Kaufman, former U.S. Senator

**March 22—OLLI Forum**  
Thom Remington, Council Chair

**March 29—No program. Spring break**

**April 5—Wilmington International Exhibition of Photography**

Karl Leck, Delaware Photographic Society

**April 12—Selections from *The Grand Duke* and other Gilbert and Sullivan Operettas**  
The Ardensingers

**Friday Lectures  
Fridays,  
Room 108/109**

**Free and Open to the Public  
See *This Week* for updates**

Coming

April 21, 12 noon

Earth Day program with a movie and speakers.  
See the April Newsletter for schedule and details.

**Social on Wednesday, March 15**

Free to members. Take a break and meet fellow members and friends for coffee, tea, conversation plus homemade cookies. There will be one more social this semester on Thursday, April 6. Meet in the Lobby at 1:30 p.m.



**Lifelong Learning News**  
<http://www.lifelonglearning.udel.edu/wilmington/newsletter/>

Osher Lifelong Learning Institute  
at the University of Delaware in Wilmington  
2700 Pennsylvania Avenue, Wilmington, DE 19806  
(302) 573-4417

Robert Ehrlich, Editor  
Pamela Finkelman, Assistant Editor  
*Associates*

Susan Arruda, Lenore Forman, Cree Hovsepian,  
Joel Roisman, Margaret Wang,

**Submittal deadline** Monday, April 3  
**Issue date** Thursday, April 13, 2017

Submit articles to rehrlich@udel.edu, or place in the editor's mailbox in the Reception Area.

**Calendar  
2017**

- Week of March 27** ..... Spring break
- Week of April 17** ..... Summer session registration
- Fri., May 5** ..... End of spring semester
- May 8–September 8**... Arsht Hall closed for renovations. Staff support available by phone.
- May 30–June 2**.....OLLI at the Ocean
- Tues., July 11–Thurs., August 3**—Summer Session held at A.I. duPont High School.
- Tues, August 1 to Friday, August 4** . In-person registration at Goodstay for fall semester
- Mon., Sept. 11** .....Start of fall semester
- Thurs., Nov. 23–Fri., Nov. 24** .....Thanksgiving
- Fri., Dec. 8** ..... End of fall semester