



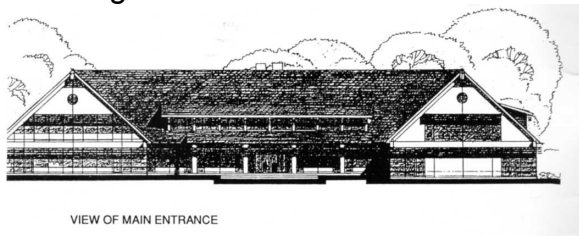
“RENEWING THE DREAM” KICKOFF ON MAY 7

Now is the time for “Renewing the Dream: Osher Lifelong Learning in Arsht Hall.” When our lifelong learning program began in 1980, classes were held in the old Wilcastle building that had limited space and has now been demolished because of many “old-building” problems. As our program grew, the dream formed about 25 years ago for a new, larger building to accommodate our valuable and expanding program on UD’s Wilmington Campus.



The Dream: Academy representatives Roxana Arsht, Robert Grimble, Florence Garrett, Samuel Arsht, and University vice-president for advancement and University secretary, Arno Loessner, view the architectural display in the Wilcastle lobby. They inaugurate the new Academy building funding drive. [Fall 1989 catalog]

Thanks to the contributions of our members, the dream became a reality and classes began in Arsht Hall in 1991.



VIEW OF MAIN ENTRANCE

Now, 25 years since the original dream, it is time to “Renew the Dream” because Arsht Hall needs expensive repairs. Now it is time to plan for a new heating/air conditioning system, a new elevator and upgraded restrooms.

Now it is time to raise \$1.5 million to cover our share of these costs through a special campaign, “Renewing the Dream: Osher Lifelong Learning in Arsht Hall.” Council made the decision to launch this campaign to keep

CHANGING OF THE GUARD

On April 14, five members of Council will be replaced by new members. At that time I will complete my stint as Chair of Council and will be replaced by Pam Meitner. During my three-year term on Council I have come to realize the importance of member participation in the life of Osher. I urge you to become a volunteer. Osher, by being financially self-supporting through membership fees and contributions, remains independent and self-governing through more than 30 committees. Recently, to keep future membership fees reasonable, we have initiated a fundraising campaign. To maintain our independence please consider making a tax-deductible contribution to Osher Lifelong Learning.

I have enjoyed serving on Council and look forward to future involvement.

Ken Mulholland

the membership fees reasonable instead of adding significant increases over five years to accumulate the additional \$1.5 million needed.

Come to the Campaign Kickoff on Wednesday, May 7, combined with the Concert Band’s program beginning at 12:40 in Room 105 followed by refreshments in the Lobby. The afternoon schedule will be delayed by half an hour.

Learn more about “Renewing the Dream” and the current extent of funding needed for these capital projects. Our program has already greatly benefited from existing endowment funds and other previous gifts. Special thanks will be given to those giving \$25,000 or more, and their names will be listed on a plaque. We will come together to celebrate the value of our wonderful lifelong learning program and look forward to continuing success in the future. Continue to dream and come on May 7.

Ruth Flexman

Lifelong Learning News

www.lifelonglearning.udel.edu/wilmington/newsletter

Osher Lifelong Learning Institute
at the University of Delaware in Wilmington
2700 Pennsylvania Avenue
Wilmington, DE 19806
(302) 573-4417

Robert Ehrlich, Editor
Associates

Susan Arruda Edith Coleman Mary Ann Dowd
Cree Hovsepian Anna Maria MacKeand Ilene Zapol

<u>Submittal deadline</u>	<u>Issue date</u>
Friday, August 15	Tuesday, September 3

Submit articles to rehrlich@udel.edu, or place in the newsletter mailbox in the Reception Area.

IT'S TIME TO REGISTER FOR SUMMER SESSION

Beat the summer heat! Register for as many as SIX summer courses and have the opportunity to stay for some awesome afternoon lectures. Summer courses and afternoon lectures are offered each Tuesday through Thursday from 9 a.m. till 12:30 p.m. during the month of July beginning Tuesday, July 8.

IN-PERSON REGISTRATION will be held Monday through Friday, April 21 to April 25, from 8:30 a.m. till 12:30 p.m. in Arsht Hall Lobby. Mail-in registration will be accepted through May 16.

There are 52 courses to choose from including: *How To Become A Safer Driver*, *Taking Enviably Travel Photos*, *The Age of Discovery*, *America's Small Wars*, *Family History Family Stories*, *Beyond Kale and World War II Social Change*. Care to learn about *Astrophysics*, *The Stanley Steamer*, *Early Christianity*, *Voltaire*, *Teen Books for Adults*, *Photo Management Basics* or *The Three Stooges*? Come join us this summer!

Each afternoon, inspiring lectures will be offered to all registered summer session students. Lecture topics include The Biggs Museum, Howard High, local history, food and health, Winterthur textiles and more.

For more details contact one of the Summer Session Chairs: Rosanne Cholewinski, Karen Foster or Carolynn Stankiewicz.

PLAN NOW FOR YOUR EARLY SUMMER "STAYCATION"
18TH ANNUAL JUNE LECTURE SERIES
TICKETS ON SALE NOW!

The 2014 June Lecture Series (JLS) will be held the week of June 2–6, right here in Arsht Hall. There will be two lectures each morning and lots of music in between. Of course, it would not be JLS without great beverages and snacks available on arrival each morning and on the breaks. All this for only \$55!

The lineup this year is another great one. You have seen their photos on our poster at the front tables; stop by to read all about them.

- **Sam Lemheney**, Chief of Shows and Events of the Philadelphia Flower Show for last eight years
- **John Flynn**, professional folk singer and social activist
- **Gayle Dillman and Jeremy Hebbel**, Gable Music Ventures Partners
- **William Ayrey**, Quality Laboratory Manager and Company Historian of ILC in Dover
- **Jeanne Murray Walker**, award-winning poet, UD professor and author
- **Ranger Vince Vaise**, Fort McHenry National Park Service
- **Lisa Chieffo**, University of Delaware – Studies Abroad Program
- **Delaware Supreme Court Justice Randy Holland**, author
- **Gene Castellano**, photographer and author
- **Dr. Holly Roadfeldt**, internationally renowned pianist
- **Musical performances** by OLLI talent including: *Sentimental Journeys*, *Circle Singers*, *Folk Guitar Jammers*, and *sLide* by *sLide* (our trombone group!)

Our many (and very friendly) June Lecture volunteers will be back at the front tables the week of April 28 to May 2 to answer any questions that you have and to sell JLS tickets for you, your family members and your friends. June Lecture Series is open to the public, so you can bring as many guests (of any adult age) as you want! If you miss us at the tables, tickets can be purchased anytime in the Office from Ellen Saienni.

SIGNS OF SPRING

Visit Goodstay Gardens in April and May and enjoy these plants during their prime bloom time: wisteria, tamarisk, spring starflower and tree peonies. In the Park, in late April, look for trout lilies, Virginia bluebells, Spanish bluebells and bloodroot. Magnolias should be finished by April 20 except perhaps the ones along Magnolia Walk. Iris should start blooming in early May and continue through June. Roses start in late May.

John Dietz

COMPUTERS! COMPUTERS! TO UPGRADE OR NOT TO UPGRADE? THAT IS THE QUESTION.

The people who make computers and software are in business to make money. You may read in the newspaper, hear on television or have your friends tell you that you need to upgrade your computer. Do you really need to? Before you decide to upgrade, evaluate your needs. If you are dissatisfied because your computer has slowed down over the years, you may need to simply "clean up" your personal computer. Lifelong Learning has a Windows 7 course to show you how to "clean up" your computer so it will operate faster. If you upgrade from Windows 7 to Windows 8, you will encounter an entirely new interface, that is, the use of Apps versus a desktop. Lifelong Learning offers two courses, Windows 8 Touch Screen and Windows 8 Management, to help you learn how to use what can be a confusing new operating system. The bottom line is that unless you are ready to learn how to use a "Touch Screen," cleaning up your existing Windows 7 computer may be the better choice.

Kenneth Mulholland
Curriculum Committee

MEMBER SUPPORT FOR 1991 CAMPAIGN "A.L.L. DREAM REALIZED IN ARSHT HALL"

Campaign chair, Bob Grimble, reported, "Participation was over 80 percent by active A.L.L. members and their commitments [\$700,000] were much more generous than I would have expected from retirees."

UD Messenger Vol. 1, No. 1, p. 35, Fall 1991.



Sat., June 7 *New York Bullets Over Broadway*
Mon., Aug. 11–Sat., Aug. 16 *Mostly Maine*
Fri., Sept. 19–Sun., Sept. 21 *Laurel Highlands,*
PA/ Frank Lloyd Wright
Tues., Dec. 9–Fri., Dec. 12 *Greenbrier Hotel*
Christmas Extravaganza
Thurs., Jan. 8, 2015–Fri., Jan. 16 *Tropical Costa*
Rica

Visit the Travel Desk in the Lobby, Monday,
Tuesday and Thursday, 11:45 a.m. – 12:30 p.m.

★ ★ ★ ★ ★ ★ ★ ★ ★ ★ ★ ★ ★ ★ ★ ★ ★ ★

BUS TRIP: MARTIN GUITARS

The OLLI Folk Guitar Class has organized a trip to the Martin Guitar factory in Nazareth Pennsylvania, Friday May 16, leaving OLLI at 9 a.m.

See how Martin guitars are made, marvel at the display of vintage Martin Guitars, and play some of the guitars available for sale. See Andy Geyer (geyerat@comcast.net) for bus price, luncheon possibilities, and to sign up for the trip. Friends and spouses welcome!

"PLAYING ON"

Osher member Doortje Shover was inspired to make a film about a year ago about an Osher member, Buna Fletcher, who was in two of her recorder ensembles but is now an Alzheimer patient. In spite of this Buna continued to enjoy and play recorder music when so prompted by her friend Doortje Shover. The film, "Playing On," was written up favorably in the *News Journal* on October 29, 2013 and had its premiere and reception at the Goodstay Center on November 3, 2013. *UDaily* published another beautiful article on March 24, 2014.

WHYY showed their own documentary, filmed on December 20, 2013 of Buna Fletcher and Doortje Shover playing recorder duets on Friday, March 28, and the following three days on Channel 12 during the program *FIRST*.

"Playing On" has been accepted to be shown at the Wilmington Film Festival on April 27.



Schedule of Events



SPECIAL EVENTS WEDNESDAYS 12:45–1:45 P.M. IN ROOM 105 ANNOUNCEMENTS AT 12:40 P.M.

Join us each Wednesday for Special Events that are open to all members. Feel free to attend each week or select the programs that most interest you. You can buy your lunch, bring your lunch or just come and enjoy.

April 23 – **Operation Pastorius**, Lt. Col. Carl Witte, U.S. Army (Ret.)

April 30 – **UD Lifelong Learning Orchestra**, Rick Wellons, Conductor

May 7 – **UD Lifelong Learning Concert Band**, Paul Hess, Conductor

May 14 – **UD Lifelong Learning Chorus**, Henry Chisholm, Director

FOLK GUITAR CONCERT

The first-ever OLLI folk guitar lobby concert will be presented Friday, April 25 at 11:45 a.m. The program will include solos, small groups, and audience participation numbers accompanied by the members of the beginning, intermediate and folk guitar classes and music jam friends, as well as demonstrations of various guitar styles and techniques and original material by our class songwriters. See Barbara Hoffman (hoffmanbarbemily@gmail.com) for more information.

SOCIAL ON THURSDAY, APRIL 24

Meet fellow members before the end of the spring semester at the last social of the semester with coffee, tea and conversation. The cookies are yummy with or without fat, gluten and sugar. Gather in the Lobby at 1:30.



REP THEATRE

Apr. 24–May 10 *Wit* by Margaret Edson

Performance by the Resident Ensemble Players of UD at the Thompson Theatre at the Roselle Arts Center in Newark. Single tickets for Osher members are \$2 off the regular price. More information and purchases are available online at: <http://www.rep.udel.edu> or call 302-831-2204.

SCIENCE AND RELIGION

Lawrence Principe, a UD alumnus and professor at Johns Hopkins University, will discuss “The Stubborn Myth of the ‘Warfare’ Between Science and Religion” during a presentation at 7:30 p.m., Tuesday, April 22, in 100 Kirkbride Hall in Newark.

Principe’s talk will explore the myth’s origins and empty foundations and why it continues to be perpetuated. He also will consider how religious motivations, individuals and institutions historically have been the primary drivers of scientific exploration and discovery.

CALENDAR 2014

Fri., May 16	End of spring semester
Tues., May 27–Fri., May 30 ..	OLLI at the Ocean
Week of June 2	June Lecture Series
Tues., July 8–Thurs. July 31	Summer classes
Tues., Sep. 2.....	Fall semester begins
Tues., Nov 4	Election Day
.....	No classes, lifelong learning closed
Thurs., Fri., Nov. 27-28	Thanksgiving Break
.....	No classes
Fri., Dec. 5	End of fall semester