



UNIVERSITY *of* DELAWARE

Faculty Senate Open Meeting The Data Center

October 14, 2013



The STAR Campus

3 + 1 Strategy

Aligning Strategic Priorities with Opportunities

Energy and Environment

Life and Health Sciences

National Security and Defense

Areas of UD strength that align with national priorities

Focus of our strategic investments & initiatives

Focus of our major external partnership efforts

+

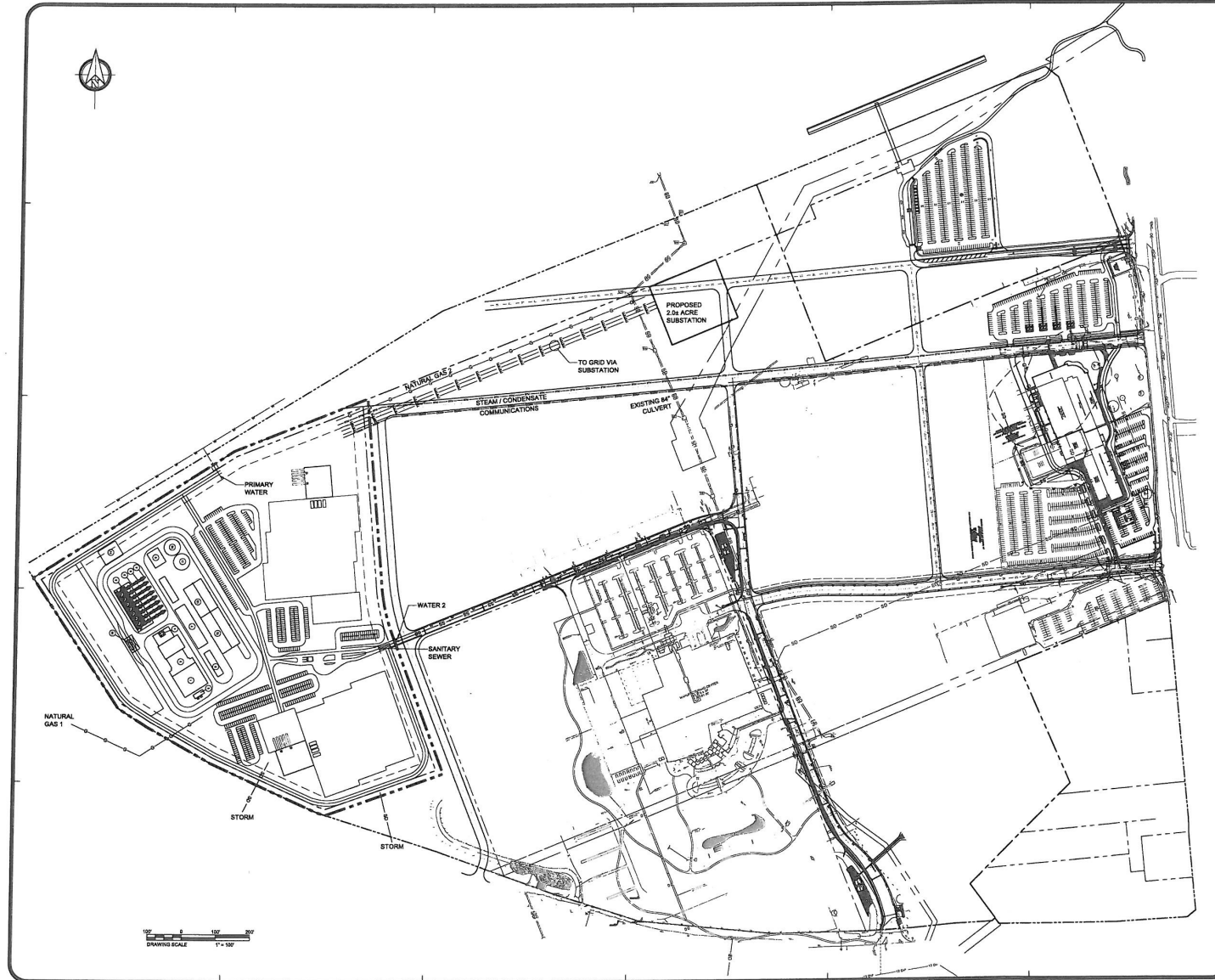
Enabling Infrastructure

"Partner with us as we give new economic and intellectual life to a once-vital manufacturing site that was an important part of our community's history." -STAR Campus Homepage



UNIVERSITY *of* DELAWARE





DRAWING SCALE
1" = 100'

**MASTER SITE PLAN
INCLUDING SUBSTATION & TRANSIT STATION
STAR CAMPUS**

CITY OF NEWARK - NEW CASTLE COUNTY - DELAWARE

DATE: 03 JULY 2013
SCALE: 1" = 100'
PROJECT NO. #718.C1
SHEET: 1 OF 1

DUFFIELD ASSOCIATES
4400 LAMINGTON ROAD
NEW CASTLE, DE 19720-1111
TEL: 410.326.1000
FAX: 410.326.1001
WWW.DUFFIELDASSOCIATES.COM

DESIGNED BY	PREPARED BY
DATE	DATE
BY	BY
CHECKED BY	CHECKED BY
DATE	DATE
BY	BY

APPROVED BY: [Signature]



STAR Campus Steering Committee

Scott Douglass, Executive Vice President

Domenico Grasso, Provost

Nancy Brickhouse, Deputy Provost

Charlie Riordan, Vice Provost, Research

Kathy Matt, Dean, College of Health Sciences

Babatunde Ogunnaike, Dean, College of Engineering

Chris Hudson, Director, Planning and Operation, Office of EVP

Alan Brangman, Vice President, Facilities, Real Estate & Aux. Services

David Weir, Director, OEIP

Mike Bowman, President, DTP (Assoc. Director, OEIP)

Peter Krawchyk, University Architect

Andy Lubin, Director, Real Estate Development

Ken Grablewski, Senior Director, Maintenance & Operations

Laure Ergin, Deputy General Counsel

Meredith Chapman, Senior Editor, OCM



Data Center Working Group

Alan Brangman, VP for Facilities, Real Estate and Auxiliary Services

Jeremy Firestone, Professor of Marine Policy and Director of UD's
Center for Carbon-free Power Integration

Andy Lubin, Director of Real Estate

Kathy Matt, Dean of the College of Health Sciences

Babatunde Ogunnaike, Dean of the College of Engineering

Charlie Riordan, VP for Research

datacenterproject@udel.edu



Data Center Working Group

- Assess impact of the Data Center on STAR campus and surrounding community.
- Continue due diligence
site assessment
comprehensive review of design and infrastructure planning
- Identify consultants to assess environmental impact and CHP sizing.
- Continue to solicit input from the UD community.
- Report any concerns to EVP Douglass and Provost Grasso.