

# 1920s Barnstorming

*After completing this chapter, you will be able to:*

- Create a multimedia screen that presents the 1920s barnstorming era in the History of Flight
- Provide realism with the ambient sound of a biplane in flight
- Show the user a movie of a biplane in motion
- Link the Biplane button on the History of Flight menu to the biplane screen
- Use action buttons to enable the user to navigate

- The home screen you just created serves as a menu. When the user clicks one of the four aircraft buttons, the application branches to materials that describe the corresponding period in aviation history. In this chapter you will create multimedia screens describing the barnstorming era of the 1920s and link them to the Biplane button on the History of Flight home screen.

## Creating the Biplane Screen

---

If you do not already have PowerPoint running the Flight application, start PowerPoint and open the Flight application you began creating in the previous chapter. Follow these steps to create the biplane screen:

- ▶ Click the New Slide button to create a new slide, or pull down the Insert menu and choose New Slide.
- ▶ When the New Slide dialog appears and asks you to choose an AutoLayout, select the Blank layout and click OK. *Note:* If the New Slide dialog does not appear, pull down the Format menu and choose Slide Layout.
- ▶ Pull down the Insert menu, choose Picture, then choose From File; the Insert Picture dialog appears.
- ▶ Use the Insert Picture dialog to look in the *Aircraft* folder on the *Multitit* CD, and insert the picture called Biplane.
- ▶ Drag the picture's handles to make the picture fill the slide.
- ▶ Pull down the File menu and choose Save. Remember to save your application periodically as you work on it.

## Titling the Biplane Screen

---

The title of the biplane screen is “Barnstorming Biplanes.” To title the biplane screen, follow these steps:

- ▶ If your version of PowerPoint has the tri-pane view, click in the Outline pane to position your cursor there; otherwise, click the Outline icon to bring up the Outline view.
- ▶ In the outline, alongside the icon that represents the second slide, type:  
**Barnstorming Biplanes**

## Entering the Biplane Text

---

Printed below are the text objects for you to type onto the Biplane screen. For each text object, create a separate text box by pulling down the Insert menu and choosing Text Box, or by clicking the Text Box icon on the Drawing toolbar. Then click the spot on the slide where you want the text to appear, and type the text. The text objects to type are listed as follows:

**Biplanes were popularized by barnstormers who used them to dazzle onlookers during the 1920s.**

**Pictured here is the Waco Taperwing, a very acrobatic biplane.**

**In the 1940s, biplanes were used heavily to train civilian pilots during World War II.**

**Click anywhere to continue.**

## Adjusting the Text

---

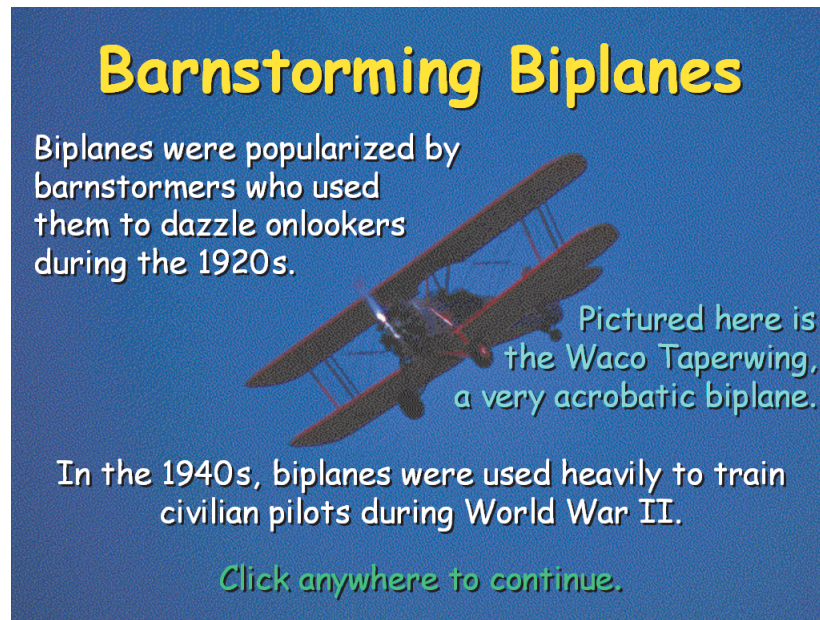
Following the text-editing procedures you learned in Chapter 20, arrange the text and make it look good on the screen. Use the Font Size tools to make the text large or small. Drag the text boxes to move each line where you want it on the screen. Use the Font Color tool to colorize the text. Use the Shadow tool to create drop shadow. Use the Font tool to adjust the fonts. Figure 27-1 shows one way of arranging the biplane screen.

## Creating the Ambient Sound

---

There is a waveform audio file called *Biplane* in the *Ambient* folder of the *Multilit* CD. Use the Insert Sound tool to make *Biplane.wav* be the ambient sound for your biplane screen. Try to do this on your own, but if you need help, follow these steps:

- ▶ Pull down the Insert menu, choose Movies and Sounds, then choose Sound from File; the Insert Sound dialog appears.
- ▶ Use the Insert Sound dialog to look in the *Ambient* folder on the *Multilit* CD, and insert the sound called *Biplane*.
- ▶ If PowerPoint asks whether you want the sound to play automatically, answer Yes.
- ▶ Pull down the Edit menu and choose Sound Object, or right-click the sound icon and choose Edit Sound Object; when the Sound Options dialog appears, check the box to make the sound loop until stopped.



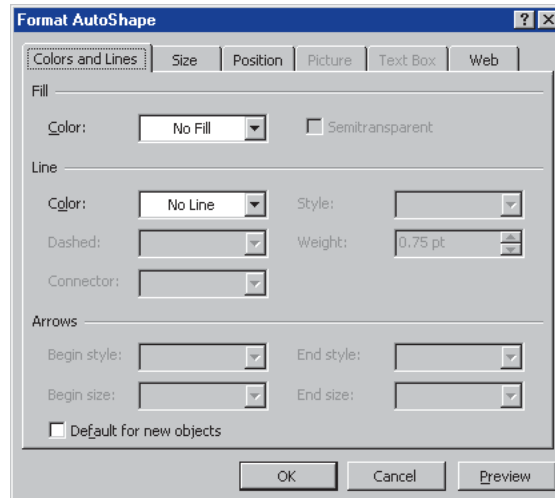
**Figure 27-1** The completed biplane screen. Photo by David K. Brunn.  
Copyright © 1994 Aris Multimedia Entertainment, Inc.

- ▶ Drag the sound icon to an unobtrusive place on the slide, such as the lower right corner.
- ▶ Pull down the File menu and choose Save.
- ▶ Click the Slide Show icon to rehearse the application. The ambient sound should start playing. If it does not, click the Audio icon. Notice how the ambient sound creates the illusion that a biplane is flying overhead.

## Linking the Biplane Screen to the Biplane Button

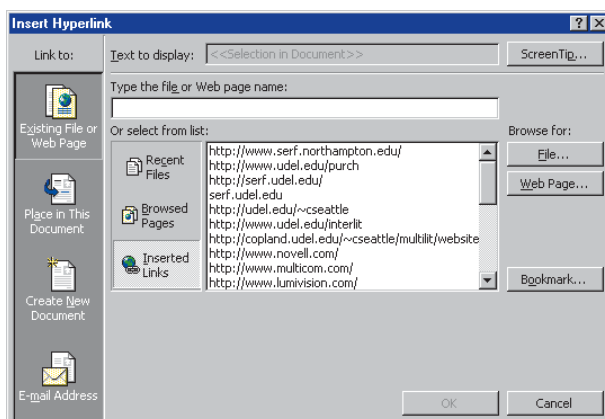
Now that you have created the biplane screen, you can link it to the Biplane button on the History of Flight home screen. The way to do this is to draw a rectangle over the Biplane button, turn the rectangle transparent, and then link the rectangle to the biplane screen. Follow these steps:

- ▶ In PowerPoint, select the home screen for editing. To do this, either use the scrollbar to move back to the home screen or click the Slide Sorter icon and then double-click the home screen to go to it.
- ▶ Click the Rectangle tool on the Drawing toolbar.
- ▶ Click and hold down the mouse button on the upper left corner of the Biplane button, then drag the mouse to the lower right corner and release the button.
- ▶ A solid rectangle now appears over the Biplane button. If the rectangle is not where you want it, drag its handles to adjust it.
- ▶ To turn the rectangle transparent, right-click it, and when the menu pops up, choose Format AutoShape.

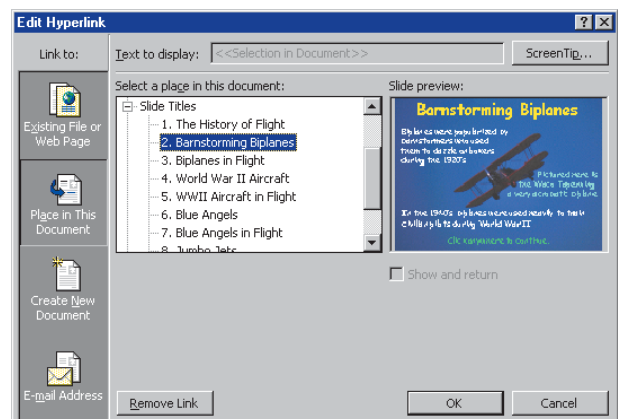


**Figure 27-2** To turn the rectangle invisible, set its Fill Color to No Fill, and set the Line Color to No Line.

- ▶ When the Format AutoShape dialog appears, set the Fill Color to No Fill, and set the Line Color to No Line, as illustrated in Figure 27-2. Then click OK to close the dialog.
- ▶ To create the link, pull down the Insert menu and choose Hyperlink; the Hyperlink dialog appears as illustrated in Figure 27-3.
- ▶ In the left column of the Hyperlink dialog, click the option to link to a place in this document.
- ▶ As illustrated in Figure 27-4, click the slide you want to link to. In this example, click slide 2, which is your biplane slide. Notice how the dialog previews the slide to make sure you selected the one you wanted.
- ▶ Click OK to close the dialog. The link has been created.
- ▶ Remember to save your application by pulling down the File menu and choosing Save, or click the Save icon.



**Figure 27-3** The left-hand column of the Hyperlink dialog has an option that lets you link to places in the current document.



**Figure 27-4** Linking to slide 2, which is the Biplane slide in the *History of Flight* application. Notice how the dialog previews the slide to make sure you link to the one you want.

## Triggering the Link

---

To trigger the link and find out if it works, click the Slide Show icon to run your application. Move your mouse over the Biplane button. The cursor should change shape as you move over the button, indicating there is a link at that spot. Click that spot, and your biplane screen appears. The ambient sound of the biplane will begin to make it sound like a biplane is flying overhead. Read on to learn how to show the user a movie of a real biplane flying through the air.

## Creating the Movie Screen

---

To bring your application to life, you can add a full-motion video clip of a barnstorming biplane in action! Follow these steps:

- ▶ In PowerPoint, select the biplane screen for editing. To do this, either use the scrollbar to move to the biplane screen or click the Slide Sorter icon and then double-click the biplane screen to go to it.
- ▶ Click the New Slide button to create a new slide, or pull down the Insert menu and choose New Slide.
- ▶ When the New Slide dialog appears and asks you to choose an AutoLayout, select the Blank layout and click OK. *Note:* If the New Slide dialog does not appear, pull down the Format menu and choose Slide Layout.
- ▶ Pull down the Insert menu, choose Picture, then choose From File; the Insert Picture dialog appears.
- ▶ Use the Insert Picture dialog to look in the *Aircraft* folder on the *Multitilt* CD, and insert the picture called *Biplane*.
- ▶ Drag the picture's handles to make the picture fill the slide.
- ▶ If your version of PowerPoint has a tri-pane view, click in the outline pane to position your cursor there; otherwise, click the Outline icon to bring up the Outline view.
- ▶ In the outline, alongside the icon that represents the biplane movie slide, type the title of this slide: **Biplanes in Flight**
- ▶ Switch back to Normal view or Slide view. Notice how the picture covers up the title. Press **(Tab)** until the title is selected, then pull down the Draw menu, choose Order, and bring the title to the Front. Adjust the title's font, color, size, and shadow to suit your taste.
- ▶ Pull down the Insert menu and choose Movies and Sounds, then choose Movie from File. The Insert Movie dialog appears.
- ▶ Use the Insert Movie dialog to look in the *Aircraft* folder on the *Multitilt* CD, and insert the movie called *Biplane*.
- ▶ If PowerPoint asks whether you want the movie to start playing automatically, say Yes.
- ▶ Use your computer's arrow keys to place the movie at the spot where you want it to appear on-screen.
- ▶ Save your application by clicking the Save icon, or pull down the File menu and choose Save.

## Rehearsing the Movie Screen

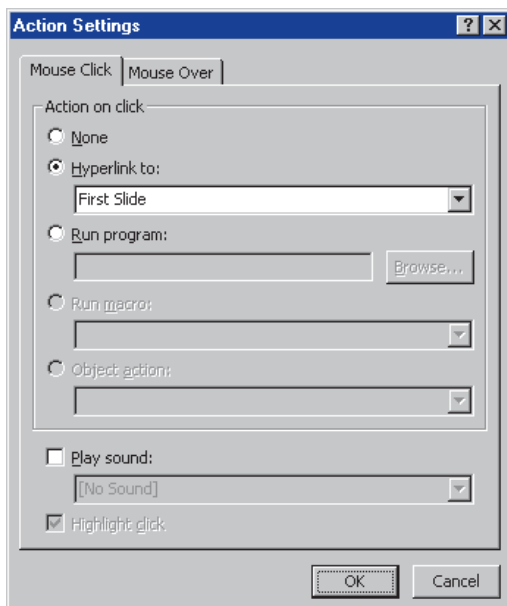
To rehearse the movie and make sure it will play well, click the Slide Show icon to get your application running. When the movie screen appears, the movie should start playing. If it does not autostart, click the movie to play it. Each time you click the movie, its play state will change. Click to stop, click to play, and enjoy.

## Creating a Home Button

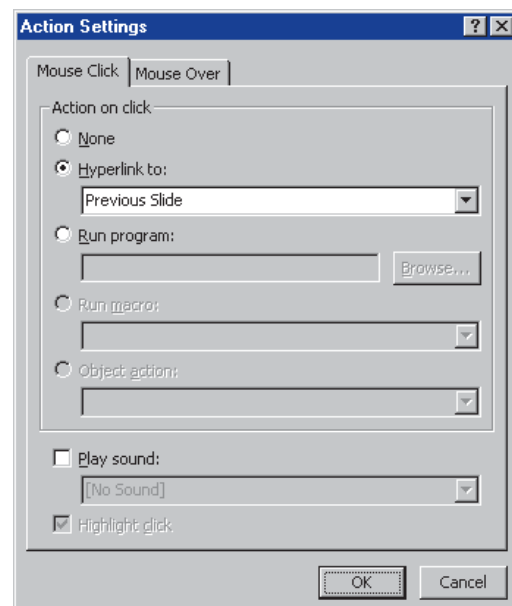
The last step in producing the biplane slides is to create some action buttons that will provide the user with navigation options. To create a Home button that will return the user to the History of Flight home screen, follow these steps:

- ▶ In PowerPoint, select the biplane movie screen for editing. To do this, either use the scrollbar to move to the biplane movie screen, or click the Slide Sorter icon and then double-click the biplane movie screen to go to it.
- ▶ Pull down the AutoShapes menu, select Action Buttons, and click the Home button.
- ▶ Click the spot on the screen (probably near the bottom) where you want the Home button to appear. The Action Settings dialog appears, as illustrated in Figure 27-5.
- ▶ Notice how the Action on Click is automatically set to hyperlink to the first slide. Leave that setting alone, because that is what you want.
- ▶ Click OK to close the dialog. The Home button has been created.

Since the background picture on the screen is primarily blue, you may want to right-click the Home button, choose Format AutoShape, and change the fill color to a shade of blue. If the button appears too large on-screen, you can click and drag its handles to adjust the size of the button, as you like.



**Figure 27-5** When you create a Home button, the Action Settings dialog is preset to hyperlink to the first slide.



**Figure 27-6** When you create a Back button, the Action Settings dialog is preset to hyperlink to the previous slide.

## Creating a Back Button

---

To create a Back button that will take the user back to the previous screen, follow these steps:

- ▶ In PowerPoint, select the biplane movie screen for editing.
- ▶ Pull down the AutoShapes menu, select Action Buttons, and click the Back button.
- ▶ Click the spot on the screen (probably near the bottom) where you want the Back button to appear. The Action Settings dialog appears, as illustrated in Figure 27-6.
- ▶ Notice how the Action on Click is automatically set to hyperlink to the previous slide. Leave that setting alone, because that is what you want.
- ▶ Click OK to close the Action Settings dialog. The Back button has been created. As you did with the Home button, adjust the Back button's color and size as you like.

## Rehearsing the Action Buttons

---

To rehearse the application and make sure the action buttons work well, pull down the Slide Show menu and choose View Show. When the History of Flight menu appears, click the Biplane button. When the biplane screen appears, click through to the screen that plays the biplane movie. Now comes the test: Click the Home button, and the home screen should reappear.

Click the Biplane button again, and click through to the screen that plays the biplane movie. Then click the Back button. This should take you back to the biplane screen.

If this worked, congratulate yourself—you are well on your way to becoming a multimedia application developer. If you had trouble, try repeating the previous steps. With practice, you can master this process.