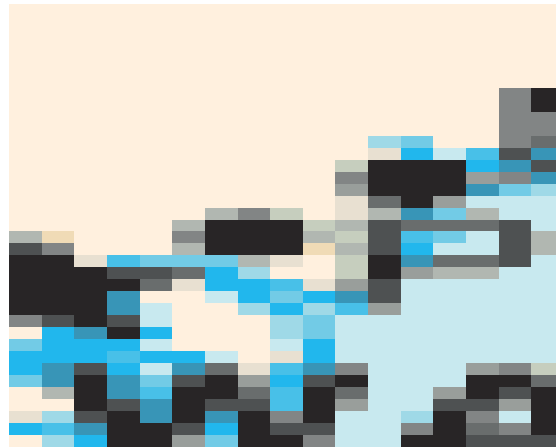


# University of Delaware English Language Institute



## Orientation for students

University of Delaware  
English Language Institute



Orientation for students





# Welcome!

We are glad you are here to study  
English with us!





The ELI is here !!

This is the University of Delaware, your home in the United States.

You will soon get familiar with this area.

# Local Area: Campus

- ELI building, 108 E. Main, Amstel  
102 E. Main, Alison, Rodney, Elkton
- Smith Hall and Morris L
- Student Health Services
- OFSS and Student Services building
- Carpenter Sports building



# Banking



## Opening a Bank Account

- Need ID
- Need proof of address
  - Ask ELI secretary for letter to verify address
  - Pick letter up at the ELI office the next day
- Choose a bank (WSFS is on campus and your ID card will be your ATM card)

**DO NOT KEEP LARGE AMOUNTS  
OF CASH IN YOUR ROOM!**





# Passports and ID

- Don't lose your passport!
- Therefore, don't carry it!
  - You do not need your passport locally.
  - Use your UD ID card.



# Parties

- Have fun, but be careful.
- Drinking age = 21
- Remember, you are
- in a different country.
- Newark has a “noise law” and will give a ticket if the party is too loud.



# Alcohol use

- Be careful! The U.S. has very strict laws concerning alcohol, which are different from your country.
- “Drinking Age” = **21** years old.

# Alcohol and You

- If you are not yet 21, you **cannot**:
  - Buy alcohol
  - Drink alcohol
  - Hold alcohol in your hand.

# Drinking and Driving

- The law concerning alcohol and driving is very strict!
- Don't drink and drive.
- Legal “blood alcohol limit” is 0.08%. --That is only a few drinks!



# Driving in the U.S.



- You can drive anywhere in the U.S. with a drivers license from any country.
- You do not need an International License to drive.
- However, you might need an International license to *rent* a car...

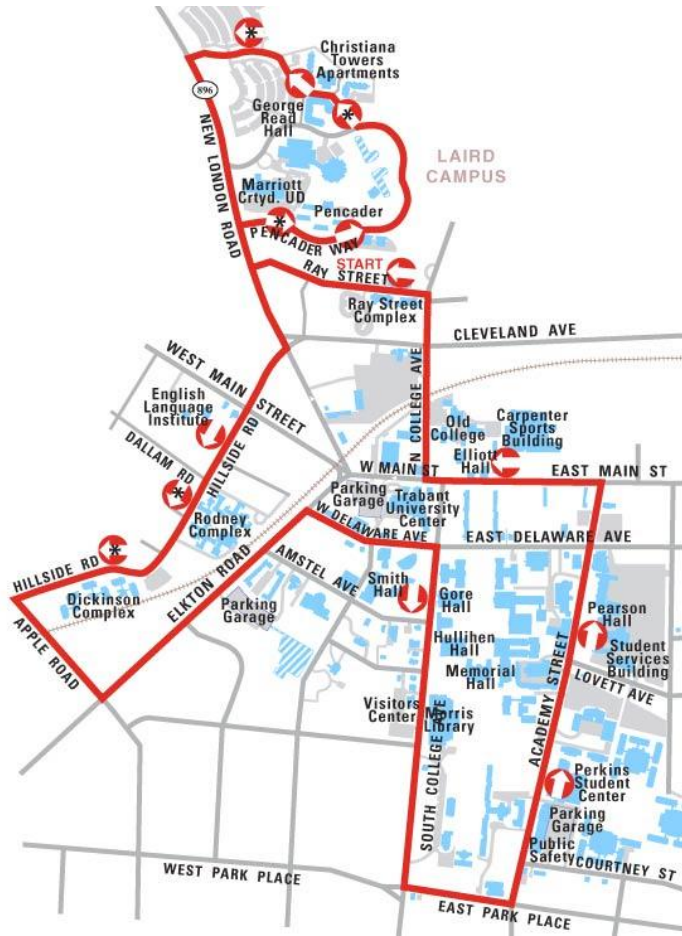


# Transportation

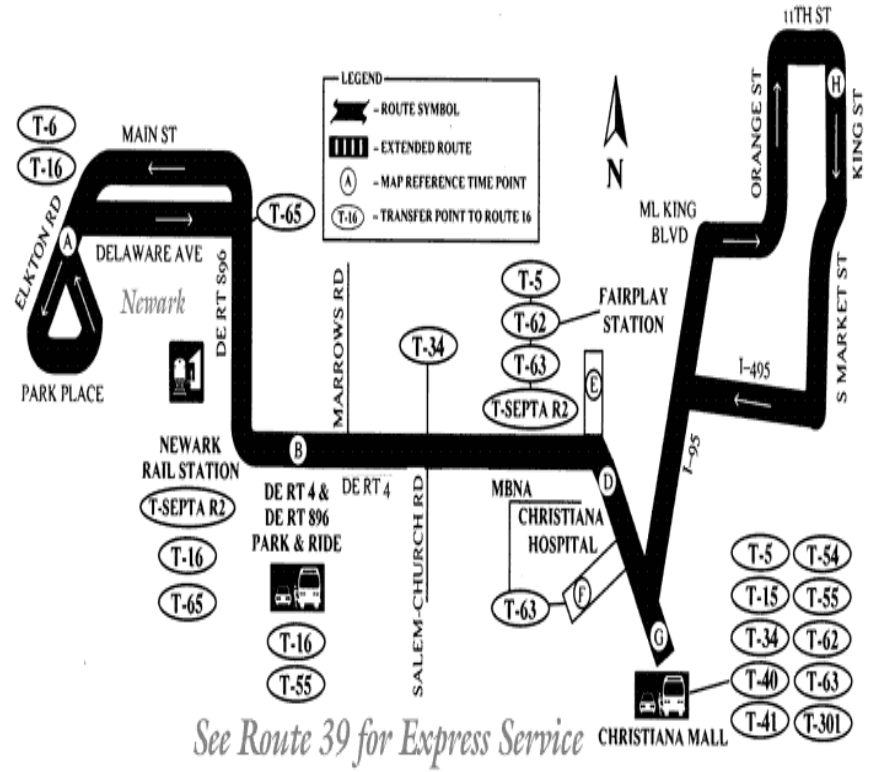
- Homestay families give a ride to school morning and evening according to homestay schedule.
- University bus runs on schedule and is free. (Schedule is on UD website)
- DART bus goes to the mall and to Wilmington for \$1.15.



# Transportation



University Shuttle Bus



Public Bus – DART

(Schedules available on line or at Trabant)





## Computer Use at UD

- **Get connected**
  - **Put your name on the Password list at the ELI front desk (108 E. Main or 189 W. Main)**
  - **Wait 24 hours**



**See the ELI secretary for your password and sign on instructions**

# Responsible Computing at UD

- After you have received your password, you must sign on, and take a short test in responsible computing at UD.
- After you have completed the short test, you can register your computer for use on the UD network.



# Downloading and File-sharing

- The internet is an *amazing* tool, but not everything is legal.
- **Downloading and/or file-sharing music or videos (TV or movies) is illegal. If you do this on the University network, you will be caught and prosecuted in the UD judiciary system.**
- **This can result in loss of computer privileges and fine.**



# Immigration and Graduation Requirements



## Attendance:

F-1 VISA requires 80% attendance

ELI requires 85% attendance for graduation

ELI “Honors” requires 90% attendance

# How to meet Americans? Get beyond the classroom!

**Don't just go to ELI classes!**

**Take advantage of being here:**

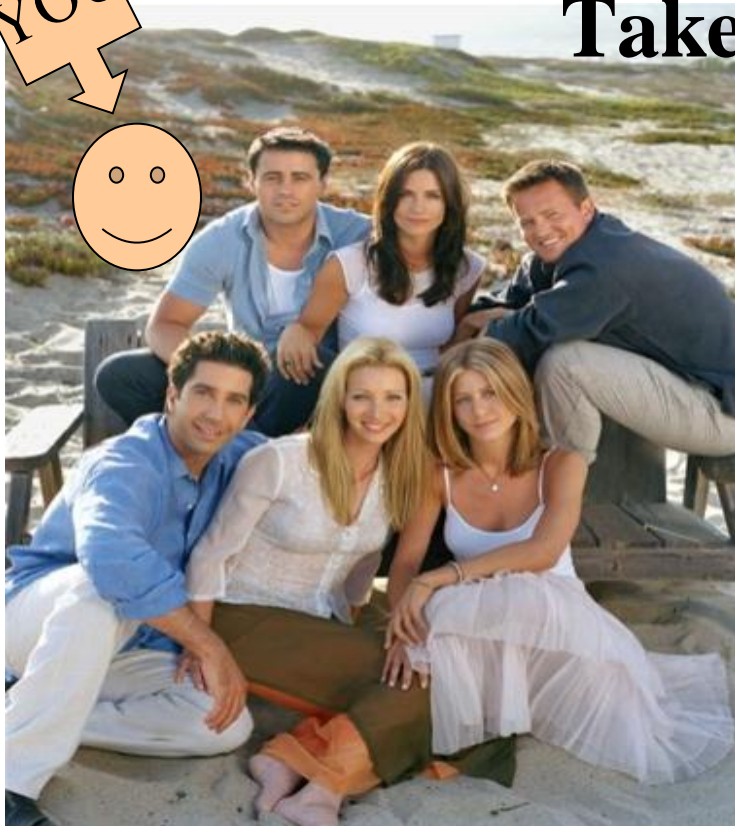
Make friends!

Language Partners

Host Families

Campus Activities

Community Activities



# Orientation Trips & Activities

**NEW YORK CITY**

**WASHINGTON, D.C.**



**PHILADELPHIA**

**BALTIMORE**

**LANCASTER**

# Orientation Trips & Activities

- Regular Activities:

Parties, dances and social hours

Picnics and barbecues

Bikes and hikes

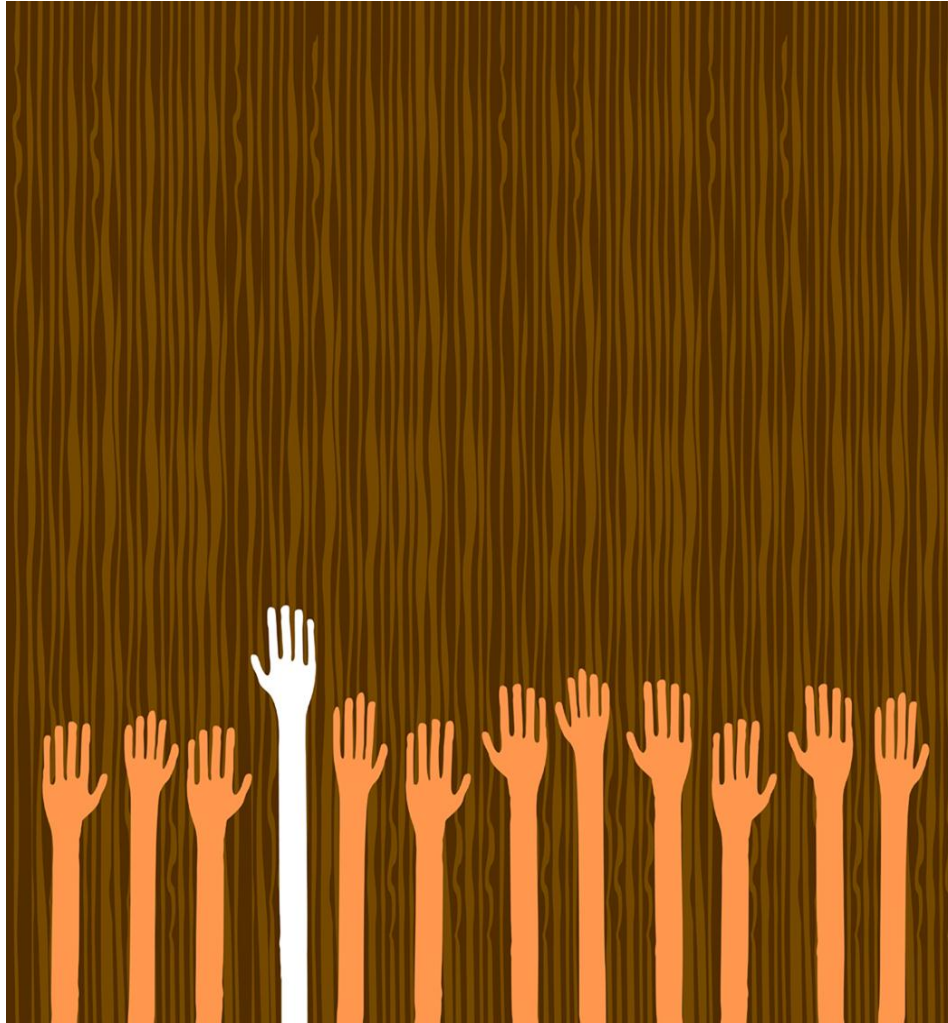
Community Events

Music concerts

Sports



# Participate in Service Learning!





# Welcome to the ELI !

Students come to the ELI for many reasons.

Why did *you* choose to attend the ELI?

# Why choose the ELI ?

---

- o Reputation: Excellent and Caring
- o Recommendation: Friend, family, coworker
- o Location: Close to everything
- o Website/brochure: Variety of programs

# ELI Credentials

---

The ELI has *excellent faculty*:

ESL professionals

All have at least Masters Degrees

Many publish textbooks and scholarly  
articles

We also offer teacher-training programs



# ELI Credentials

---

The ELI has *excellent programs*:

Full Ten Year CEA accreditation

Cultural, academic, business & legal  
ESL programs

Sister schools & study abroad  
programs

U.S. government grant training  
programs

# The ELI is known as:

---

a “Little United Nations”  
500 – 650 students from  
40 – 50 different countries





# The ELI cares about you!

---

We are a family!

We help each other succeed!

We are available 24 hours a day!



# The ELI opens doors to the future!

---

Conditional Acceptance Program to  
UD

Academic Advisement for further  
study

TOEFL Prep classes

GMAT Prep classes

TOEFL and TOEIC testing



# How ELI Places You in Classes

---

## Placement tests

1. Listening test and Interview used to place you in L/S class
2. Essay and Proficiency Test (grammar, reading, vocabulary) used to place you in R/W class



# How we use your scores

---

- I + 1
- I + 2
- I + 0
- I - 1



# Changing Classes

---

- Moving up a level:
  - 1. Tell your teacher that the class is too easy
  - 2. Your teacher recommends you to retest
  - 3. You come to Willard 007 or 109 on Wednesday at 3:00 or 4:00PM
  - 4. Decision will come Thursday PM



# Changing Classes

---

- Lateral changes (same level, different course, e.g., OB to IV or to NEWS IV)
- Turn in a class change form request to Associate Director Joe Matterer (or to office secretary) Tuesday, Wednesday, or Thursday
- Students may not move from one section to another in same course. That is, cannot move, for example, from IVA to IVB
- You cannot change from afternoon to morning class



# What now?

---

Read your schedule.

Sign up for tutoring

SALC orientation



# ELI schedule

---

- Monday through Friday
- 8:30 – 10:10; 2:00-4:05  
Listening/Speaking Class
- 10:35 – 12:20; 2:00-4:15  
Reading/Writing Class
  
- Afternoon Individual Tutoring
- Afternoon Listening Lab
- Afternoon Self-accessed Learning Lab

# What responsibilities do I have as a member of the ELI Family?

---

- 1. We show respect and kindness to everyone.



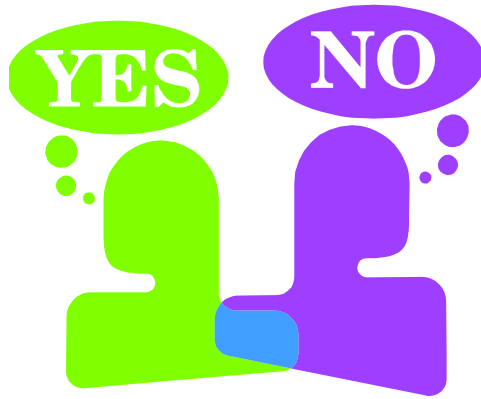
2. We will always love our own country best, but while at the ELI, we try to live and spend time with students from other countries.

---



### 3. We can disagree and still be friends.

---





4. We encourage each other to do our best and take care of ourselves.

---



# 5. Out of respect to each other, we keep our apartments, dorms, or homestay rooms clean

---



6. We are original, so that means we never cheat!

---



7. We realize that most problems result from misunderstandings and cultural differences. So we are patient with and forgiving of each other.

---





# Students' Advice to Students

---

Successful ELI student have similar characteristics, and offer this advice to new students:



# Students' Advice to Students

---

Successful ELI student have similar characteristics, and offer this advice to new students:

1. Work hard!



# Students' Advice to Students

---

Successful ELI students have similar characteristics, and offer this advice to new students:

1. Work hard!
2. Take risks!



# Students' Advice to Students

---

Successful ELI students have similar characteristics, and offer this advice to new students:

1. Work hard!
2. Take risks!
3. Get involved!





# Students' Advice to Students

---

Successful ELI students have similar characteristics, and offer this advice to new students:

1. Work hard!
2. Take risks!
3. Get involved!
4. Have fun!

# SO WHAT'S NEXT???

---

- Tomorrow be in class at 8:30.  
Follow the bus schedule
- Regular schedule: classes, tutoring, labs and SALC orientation.
- Friday: 2:20 New student Orientation II,  
Willard Hall 109
- Friday: 3:30 ELI Halloween party, 189 W.  
Main Street