

DELAWARE EFL TEACHER TRAINING ONLINE

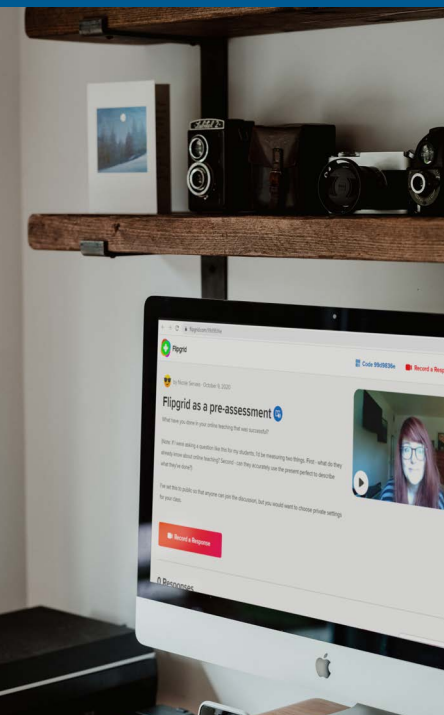
The English Language Institute's Delaware EFL Teacher Training (DEFT) program draws from a rich, 40-plus-year history of training teachers from around the world to use the latest techniques and methodologies in teaching English as a second or foreign language.

DEFT Online expands the reach of our program: until you can come to Delaware, we're ready to bring the University of Delaware to you!

Teaching is all about relationships, and when you take a DEFT course at the ELI, you will build professional relationships with faculty and colleagues that will last your entire career.



DEFT FACULTY DRAW ON THEIR EXPERIENCE AND EXPERTISE IN...



- **ESL and EFL instruction:** ELI faculty have developed their expertise by teaching English in the U.S. and abroad. The ELI is widely recognized as one of the top intensive ESL programs in the United States.
- **K-12 teaching:** many teachers have elementary and/or secondary school teaching licenses and have years of experience teaching ESL in K-12 settings
- **Continuing professional development:** Since 1985, the ELI has been a leader in short-term English as a Foreign Language (EFL) teacher training. Hundreds of ESL professionals from the U.S. and EFL program administrators and teachers from around the world have visited the ELI and participated in DEFT programs.
- **Teacher preparation:** UD English Language Institute administers the MA in Teaching English as a Second Language (MA-TESL) and the Additional Certification in ESL program, preparing teachers of English learners for all grades
- **Research and publication:** ELI faculty engage in research, present at national and international conferences, and publish textbooks, articles, and chapters. Some faculty have held leadership positions in professional organizations such as TESOL.

www.udel.edu/eli/deftonline

UNIVERSITY OF
DELAWARE

WHAT SETS US APART?



Flexible scheduling

Courses last approximately six weeks and are delivered using a strategic blend of synchronous (live) and asynchronous (self-paced) learning.



Expert instruction

Courses are designed and taught by experienced faculty with master's and, in some cases, doctoral degrees.



Access to faculty

DEFT participants meet regularly by Zoom with ELI faculty and are supported throughout the course by email, chat, video calls, and discussion boards.



Cutting-edge pedagogy

DEFT courses not only teach the latest pedagogy for language teachers, they are models of good teaching. DEFT is accredited by the Council on English Language Program Accreditation (CEA).



Engaging technology

ELI faculty are trained to use the latest educational technology, and our primary platforms are supported by UD and ELI technology specialists. Asynchronous learning is highly engaging, including interactive videos, collaborative brainstorming, annotated readings, and discussion boards.



Virtual professional learning network

DEFT participants from all over the world learn from each other as they share ideas to improve their teaching.



Differentiated language levels

DEFT Online courses are designed for teachers with intermediate to advanced English proficiency with options that allow everyone to engage with the key concepts while also improving their language skills.



Tutoring

Individual language tutoring is available to all participants for an additional fee.



Customizable programs

Groups of 12 or more can design their own online experience, including additional modules, observations, action research, U.S. culture classes, and language instruction.



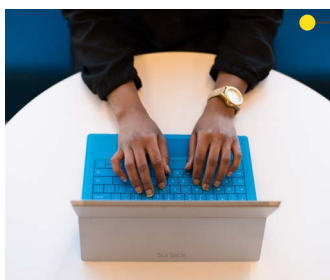
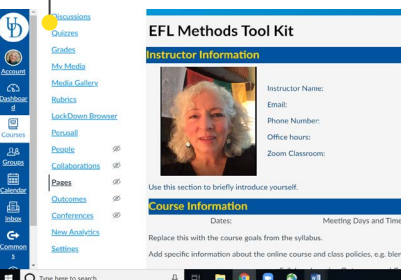
Certificates of completion

All participants who successfully complete DEFT courses will receive certificates from the University of Delaware.

HOW TO APPLY

Groups: Groups of 12 or more teachers can customize courses from the menu of core courses; tutoring, IEP language courses, and other options can be added. Contact Baerbel Schumacher at baerbel@udel.edu for details.

Individuals: Individuals can register for DEFT Online courses; see www.udel.edu/eli/apply/deftonline for upcoming course dates and costs. Tutoring is available for an additional fee.



UNIVERSITY OF DELAWARE
**ENGLISH LANGUAGE
INSTITUTE**

189 West Main Street | Newark, Delaware 19716 USA
Telephone: +1-302-831-2674 | Fax: +1-302-831-6765
Email: ud-eli@udel.edu | baerbel@udel.edu