



College of
Health Sciences

A Vision for the
Science, Technology and Advanced Research
(STAR) Campus



Transforming the former Chrysler Site
into the UD Health Sciences Complex
And Home of the DHSA



Decommissioning

- More than one million square feet taken down
- 12 million pounds of recycling material hauled offsite
- 85% Recycling Rate
- 139.3 Million Pounds of Ferrous Scrap Steel Recycled
- 40,000 Light Bulbs recycled
- 3.8 Million Pounds of Copper, Stainless Steel & Aluminum Recycled
- 50,000 tons of concrete recycled
- 379 Tons Asbestos Containing Materials Abated







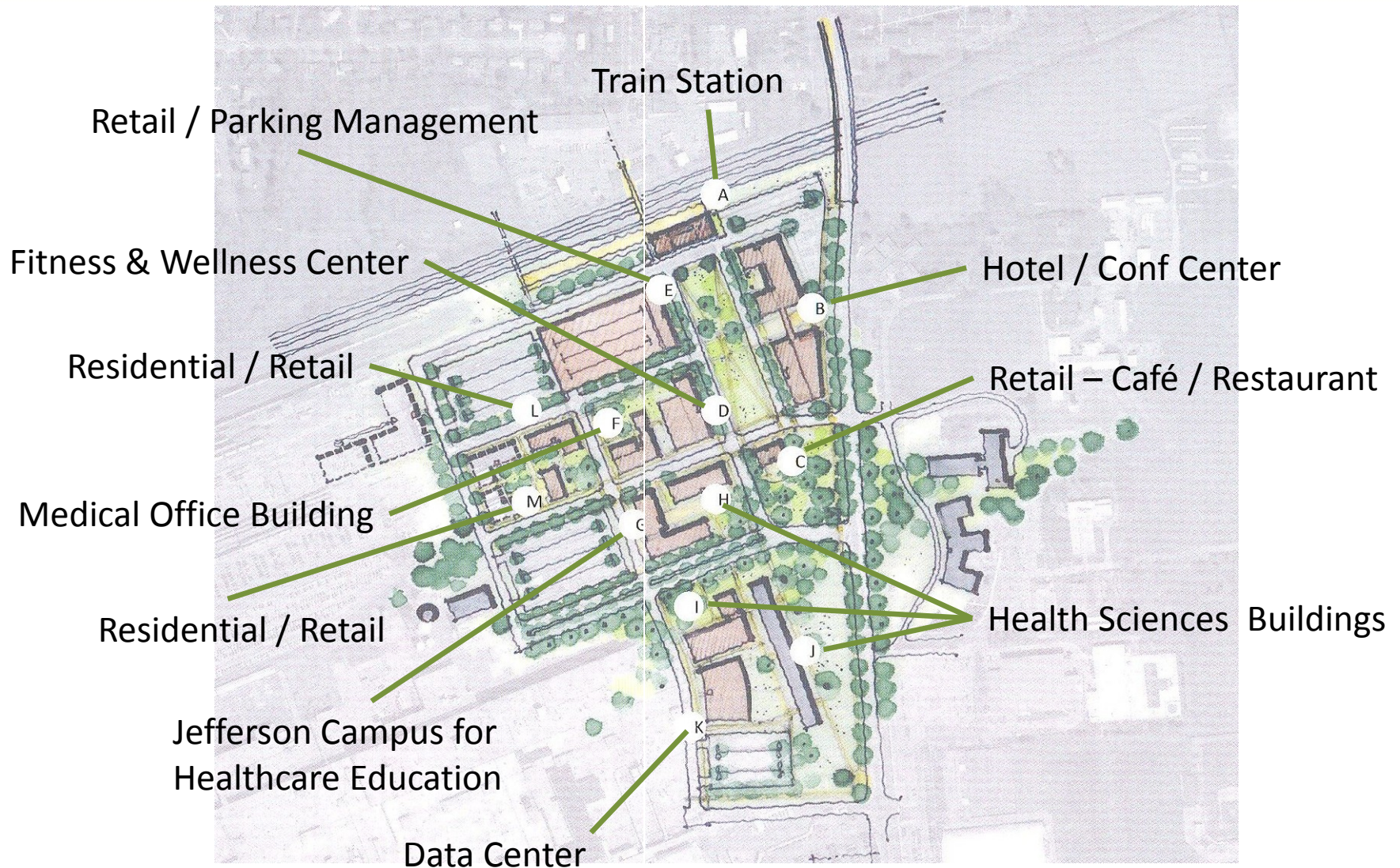
SCALE OF STAR CAMPUS





MASTER PLAN

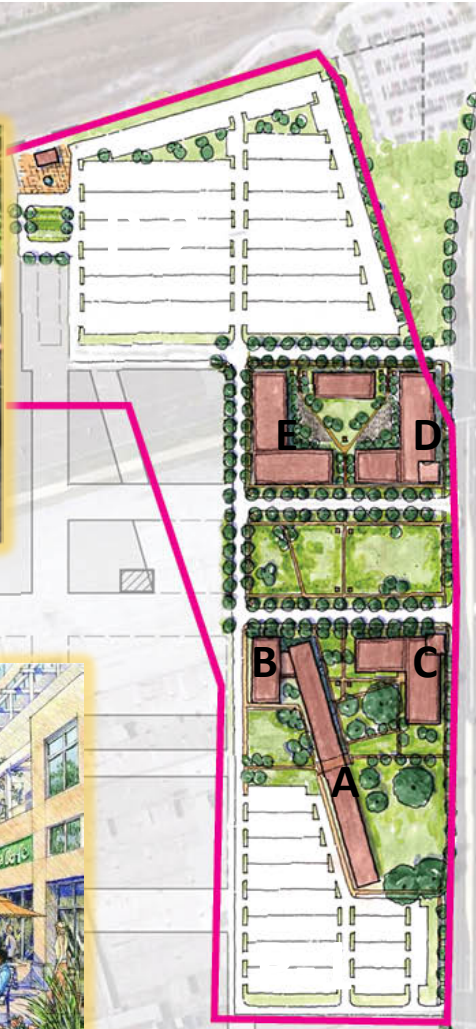




CONTEXT



Rittenhouse Square, PA



Arlington, VA



Arlington, VA



Walkable, mixed-use, healthy campus Healthy communities by design

Development of Health Sciences Sector

CHS Phase I – Administration Bldg

CHS Phases II and III

TJU Education Building (Classrooms / Residential)

Medical Office Building

Fitness & Wellness Center

Residential

Conference Center

Train Station / Shuttle Service

Parking

Restaurants

Retail



REGIONAL TRANSPORTATION





Regional Transportation



Delaware Transportation Secretary Shailen Bhatt: "It is our hope that this center, along with the STAR Campus, will spur greater economic benefit for Newark, New Castle County, the state of Delaware and the Northeast region in general."

- \$10M TIGER IV grant awarded to Newark Regional Transportation Center Station Improvement Project, to be located on STAR Campus.
- Project selected for funding based on potential to improve mobility, boost economic growth, and reduce environmental impacts.
- Improved rail service to STAR Campus will facilitate collaborations with researchers at U.S. Army Research Laboratory in Aberdeen, Md., and ease commute for students in related programs at TJU in Philadelphia.

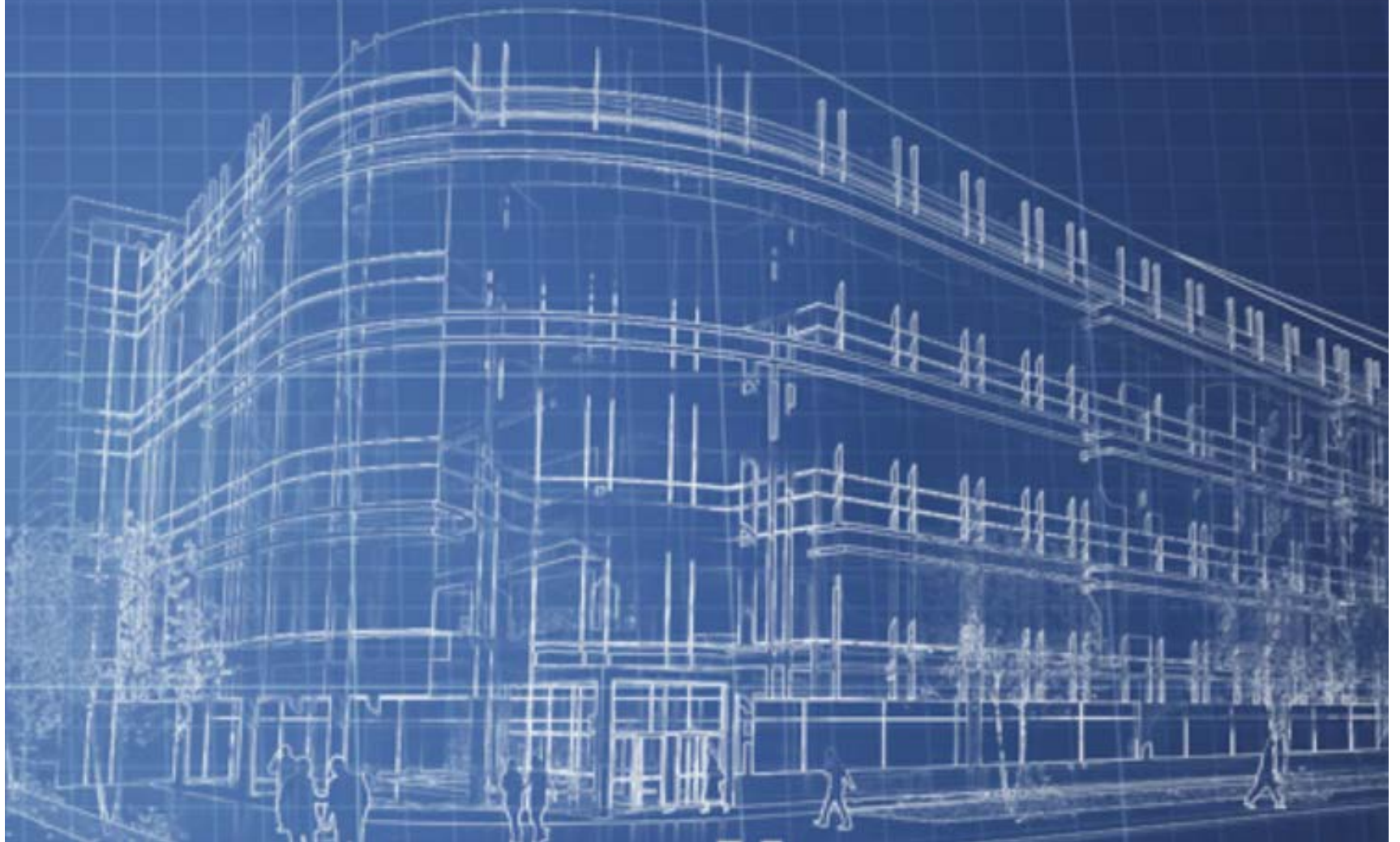


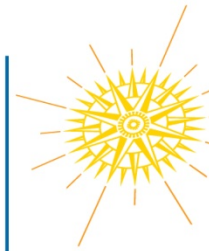
ADMINISTRATION BUILDING



our vision

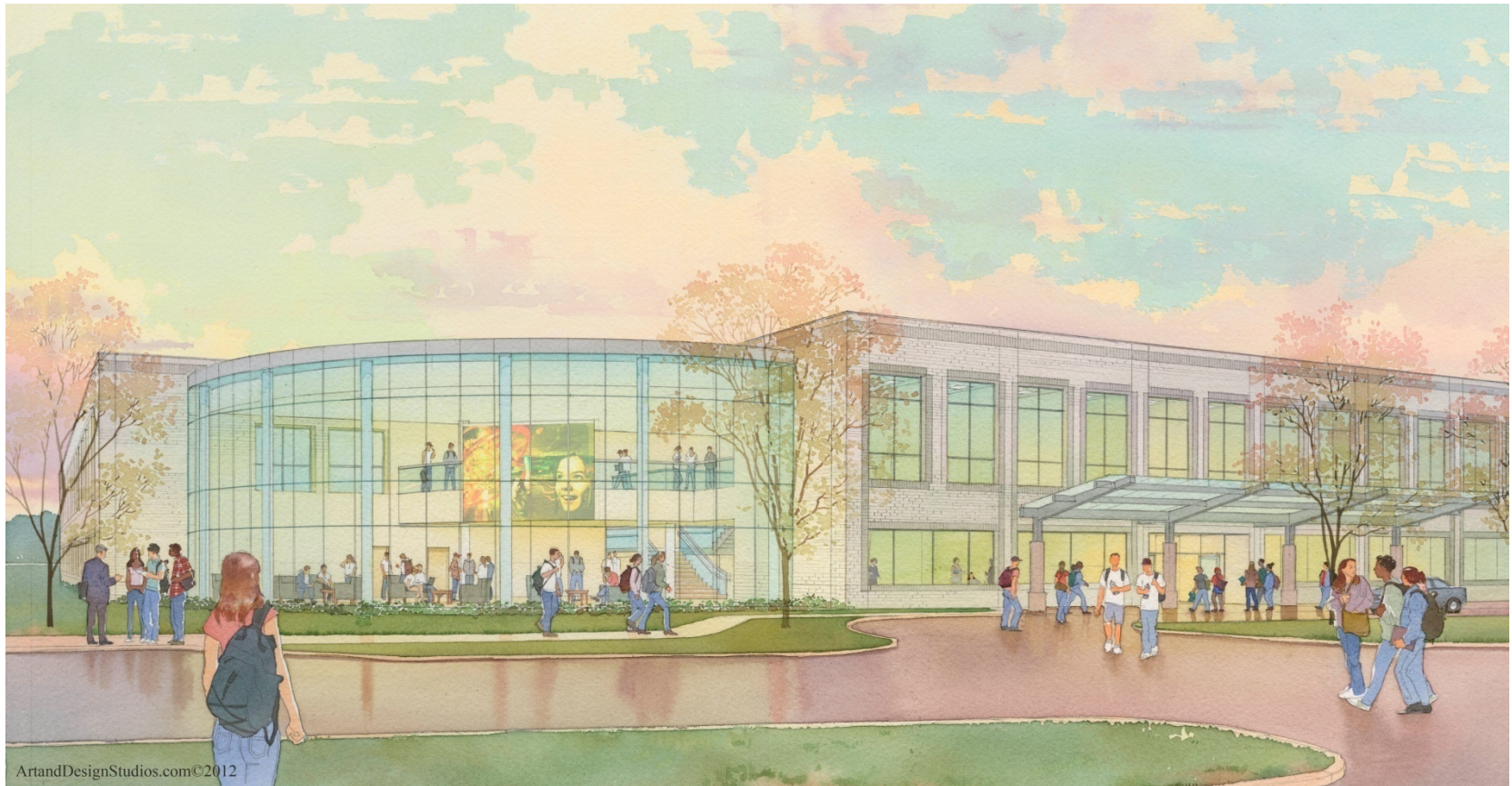
A healthy community by design





Science, Technology & Advanced Research Campus

Health Sciences Complex





HEALTH SCIENCES COMPLEX

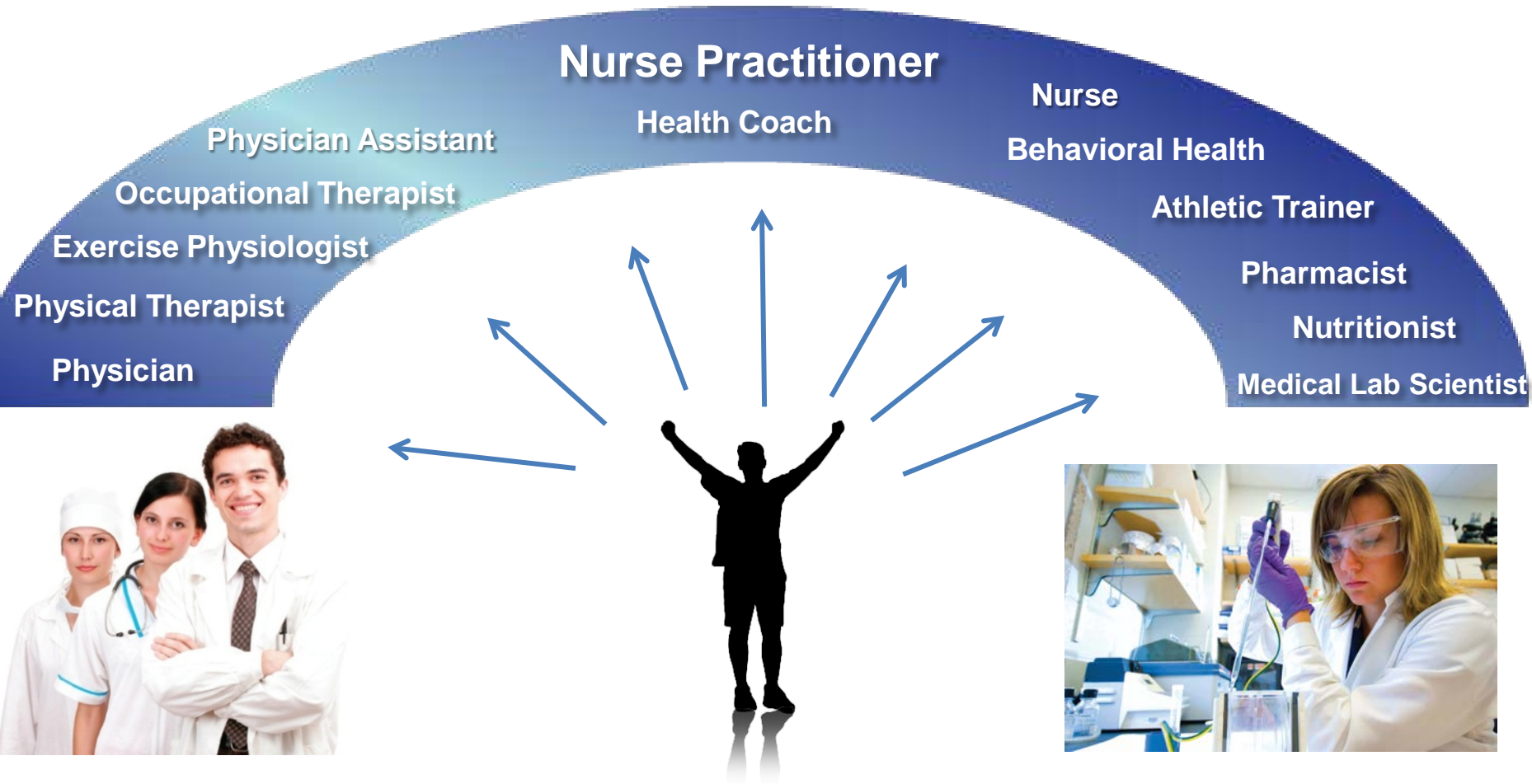
- Clinics
- Inter-professional education programs
- Interdisciplinary Research
- Translational initiatives
- Core laboratories
- Biomedical and biotechnology companies
- Restaurants
- Hotel
- Residential



- Walking and biking trails
- Fitness facilities



Interprofessional Training on the Health Sciences Complex



Patient Centered Medical Home



A campus for the future

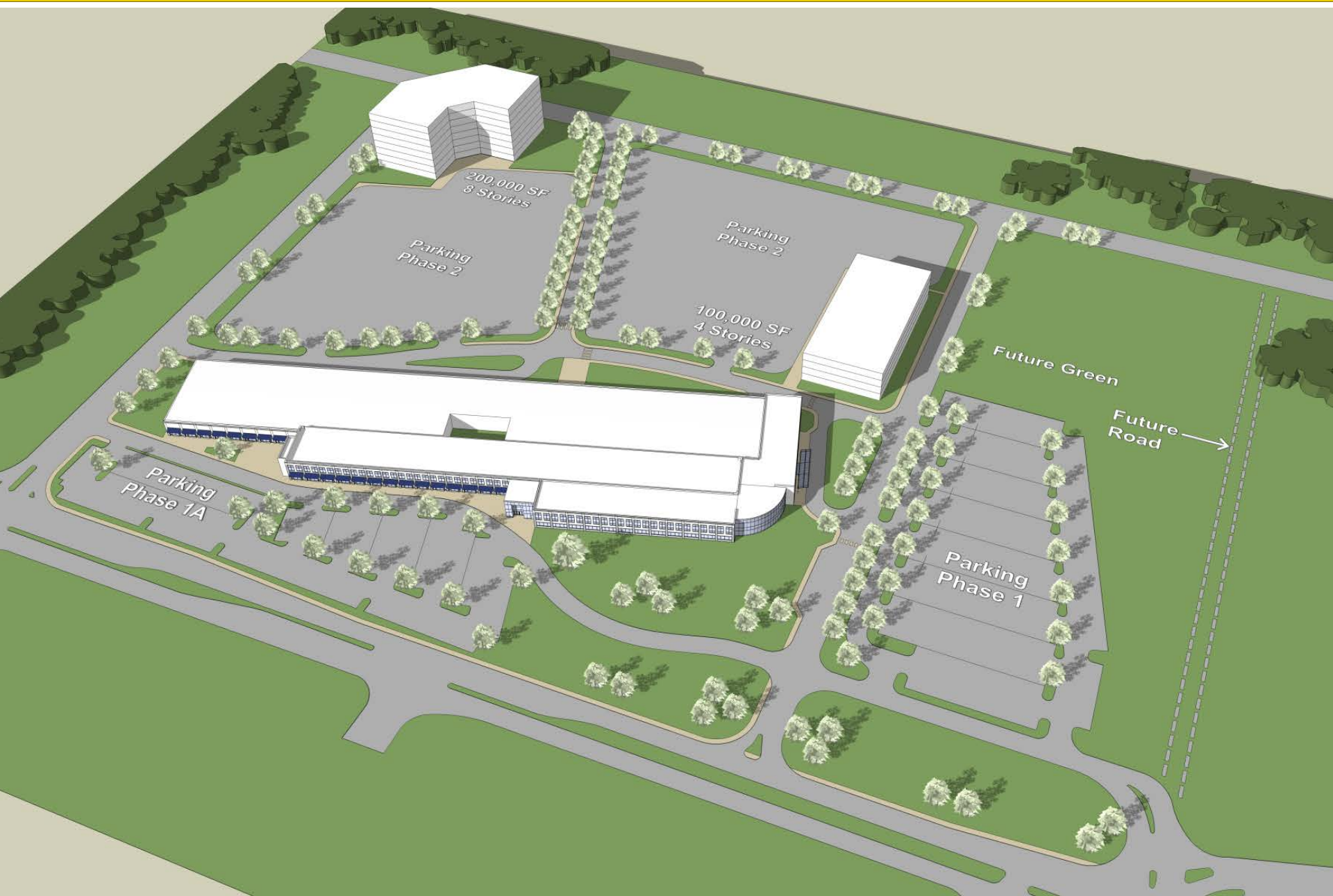
STAR Campus to enhance research, innovation possibilities



Ballinger



Tevebaugh Associates Architecture



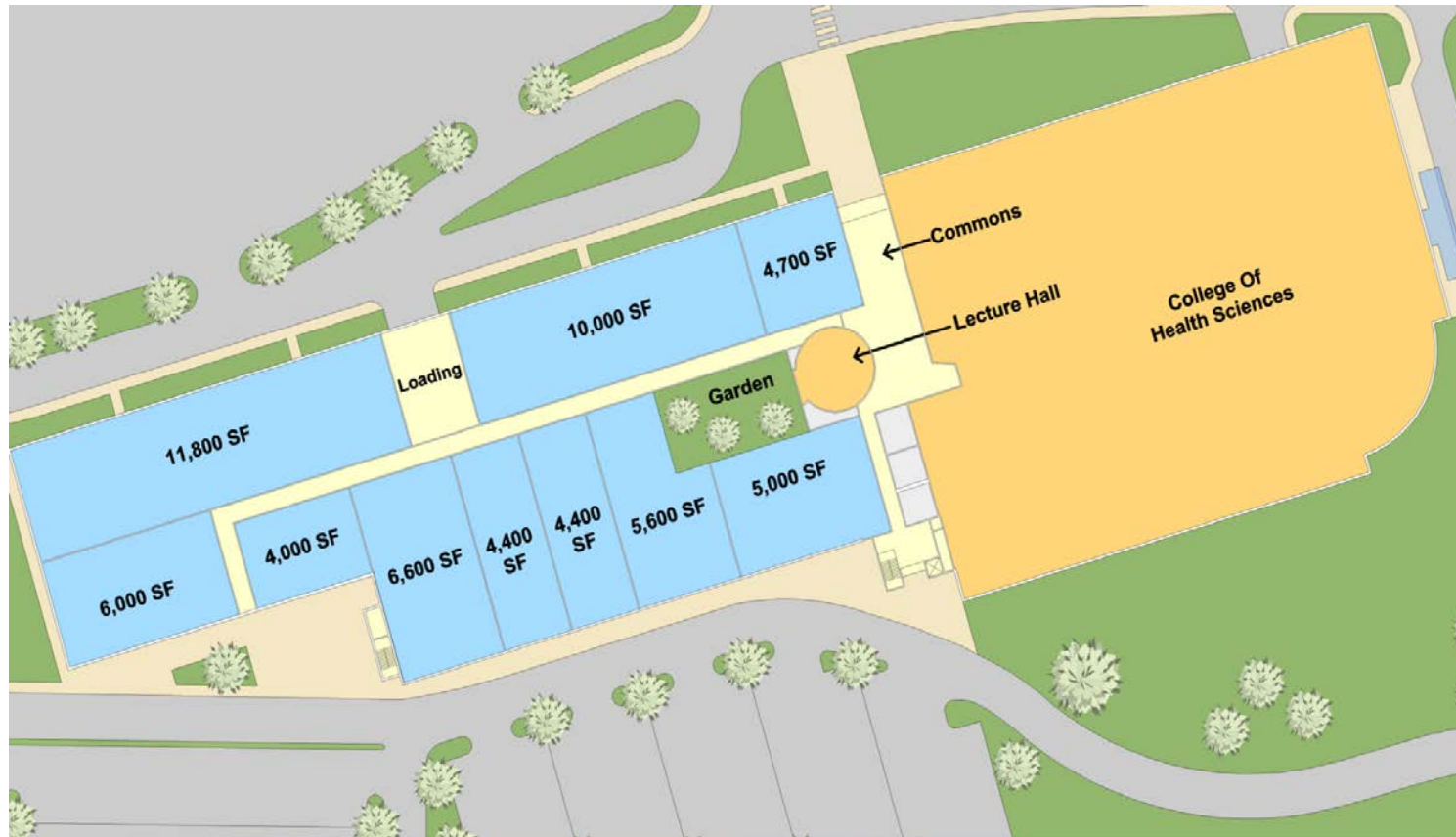


Potential Tenants:

Radiology
Behavioral Health
Medical Aid Unit
Eye Care Center
Pharmacy
Sleep Lab



BUILDING DESIGN



www.udel.edu/chs/star



have received NIH funding to investigate the role of salt in impairing vascular function. With them are Jennifer DuPont, in the lab coat, and "patient" Jody Greaney. ▶

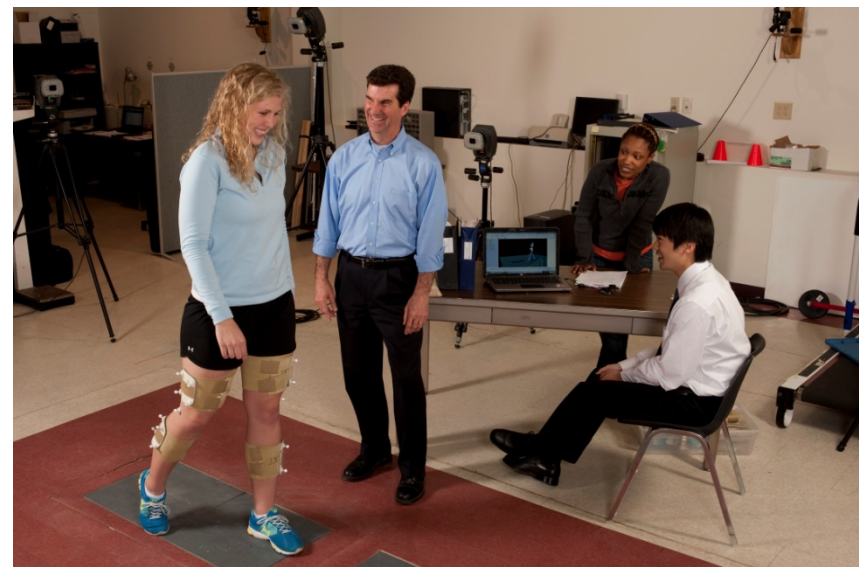
Biomedical Research





BADER CONSORTIUM™
Bridging Advanced Developments for Exceptional Rehabilitation

- Five-year \$19.5-million-grant from DOD's Office of Congressionally Directed Medical Research Programs
- Establish evidence-based orthopedic rehabilitation care that results in optimal functional outcomes for each wounded warrior.





Go, baby, go!

Babies Driving Robots

- Use of specially designed robotic power chairs to increase the mobility of infants and toddlers with disabilities
- Partnership between three colleges: Health Sciences, Engineering and Education & Human Development





Fitness Facility -



Yes U Can

- Mission is to increase inclusion, awareness and access to health, recreation and physical fitness opportunities for people with limited mobility and disabilities.
- Staff-assisted group and individual exercise and weight-training programs geared towards that population.
- Extension program serves approximately 20 adults and 40 student volunteers
- Participants do strength training, stretching, and/or cardio work.
- 16 adults registered to participate in the evening swim program and 20 for the land based workouts.
- Anticipate the numbers reaching 40+ adults and 60+ students being involved in the program this year.





Meeting Space





Meeting Space





TRANSFORMING THE HEALTHCARE WORKFORCE



Nurse Managed Health Center

Physical Therapy Clinic

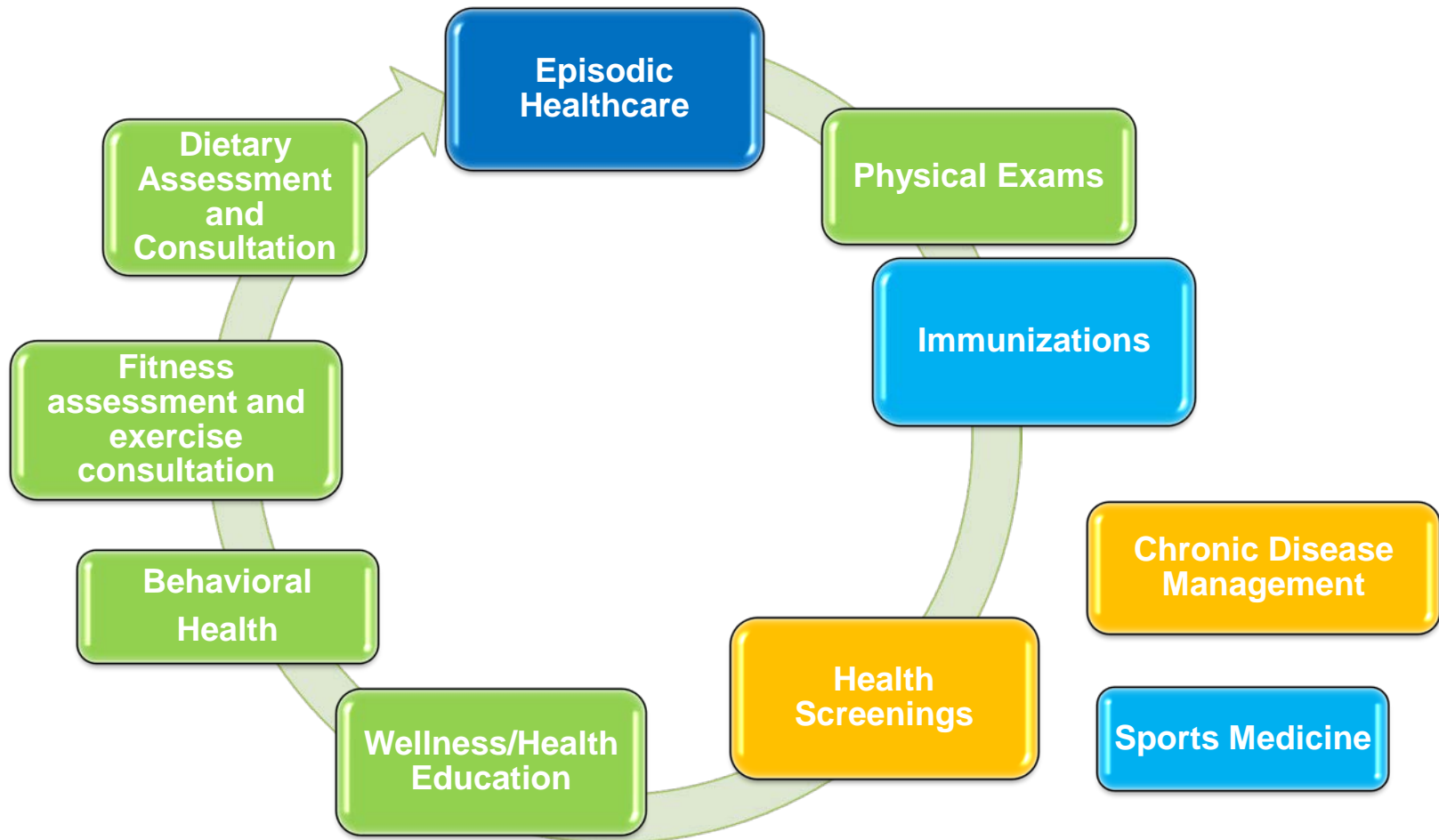


Interprofessional Training





A New Integrated Approach Model





Nurse Managed Health Center *at the* UNIVERSITY of DELAWARE

- Staffed by experienced, board-certified nurse practitioners
- Provides primary care, physical exams and health screenings for employees
- Follow-up care for workers who have been injured on the job





PT Clinical Services

- Delaware's premier outpatient clinic
- Offers care in five key areas:
 - sports medicine
 - orthopedics
 - neurologic
 - older adults
 - pediatrics
- Provides excellent clinical training opportunities for the students
- Clinics to be expanded and enhanced with move to STAR campus





HEALTHCARE THEATR_xE:

Transforming *Interprofessional* Education



- Theatre students serve as standardized patients for nursing and PT students
- Enables students to learn how to manage the unexpected without compromising standard of care required with actual patients





New Models for Business Partnerships

- Clinical care – on-site nursing, therapy, rehab
- Education, training, internships, cooperative learning
- Health and wellness: fitness, diet and nutrition, coaching
- Devices and materials: prosthetics-orthotics, medical technology, biomaterials, biomarkers

A healthy working/learning community that brings
together education, business,
and the community.



**Science, Technology &
Advanced Research** Campus
Health Sciences Complex

Timeline

- Building 1 – January 2014
- Fitness and Wellness Center – Business Plan Sept 2012,
2015 – 2016
- Building 2 - 2017 – 2018? - Pending Funding



for a *healthier*
community

