

## Ultraviolet Practice #2

Calculate UV maxima for each of the following. Show your work, including which UV table you used.

a.

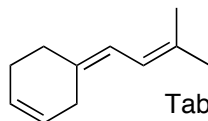


Table UV.1

Base	214
sub x 4	20
exo	5

$$\lambda_{\max} = 239 \text{ nm}$$

d.

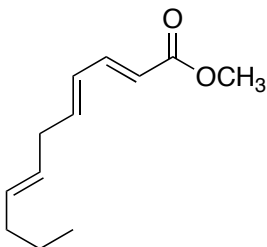


Table UV.2

Base	195
alkyl $\delta$	18
dbl bond ext	30

$$\lambda_{\max} = 243 \text{ nm}$$

b.

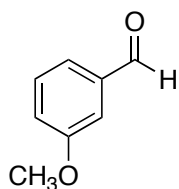


Table UV.3

G = H	250
m-OR	7

$$\lambda_{\max} = 257 \text{ nm}$$

e.

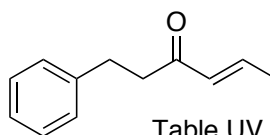


Table UV.2

Base	215
alkyl $\beta$	12

$$\lambda_{\max} = 227 \text{ nm}$$

c.

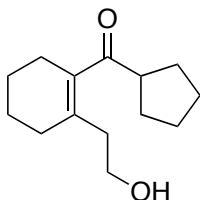


Table UV.2

Base	215
alkyl $\alpha$	10
alkyl $\beta$ x 2	24

$$\lambda_{\max} = 249 \text{ nm}$$