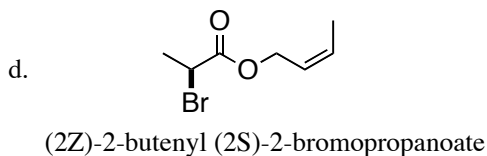
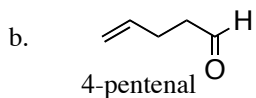
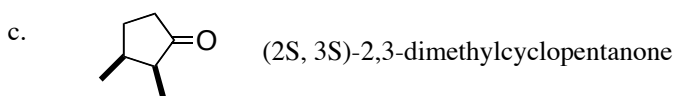
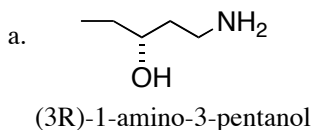


Fall 2007

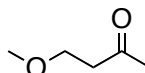
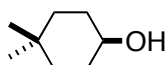
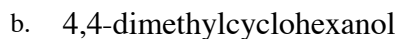
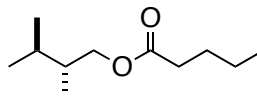
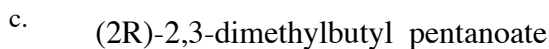
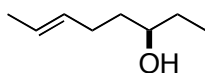
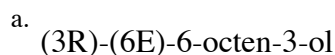
Homework #2

due: 10 a.m. Mon. Sep. 10th

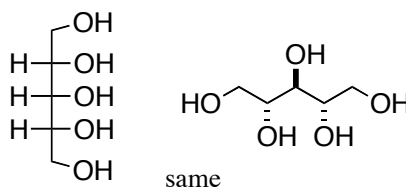
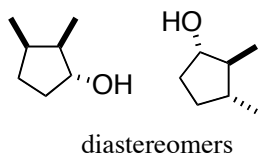
1. (8 points) Write the correct IUPAC name for each of the following:



2. (8 points) Draw the structure corresponding to the name given. Please show all stereochemistry clearly.



3. (8 points) For each pair, indicate whether they are diastereomers, enantiomers or the same.

4. (6 points) Draw a detailed arrow-pushing mechanism (other side) for the transformation of **A** to **B**.