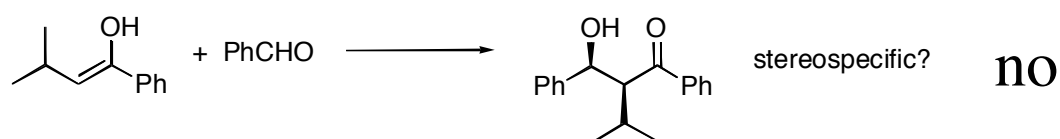
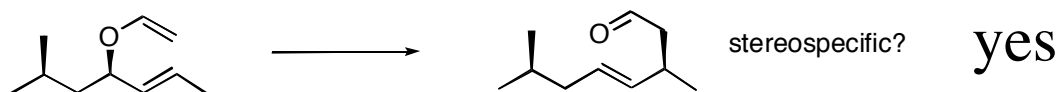
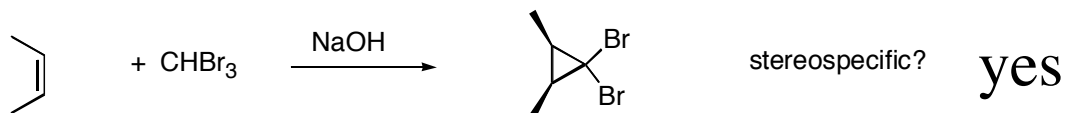
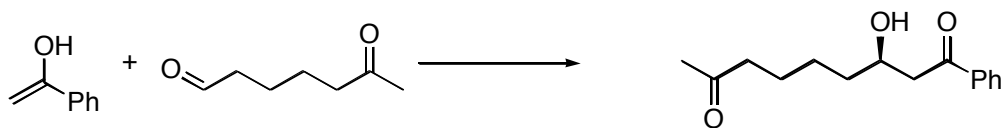


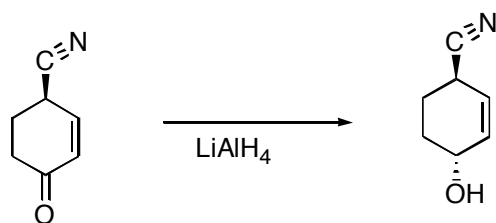
1. Determine if the following stereoselective reactions are also stereospecific



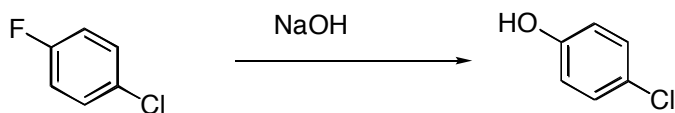
2. Circle all types of selectivity that apply (there may be more than one answer)



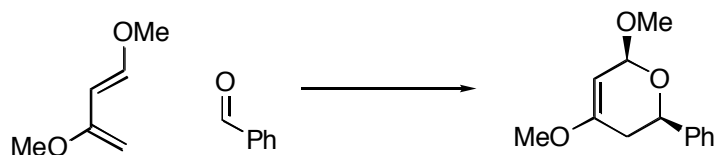
this reaction is:  
 chemoselective  
 regioselective  
 diastereoselective



this reaction is:  
 chemoselective  
 regioselective  
 diastereoselective

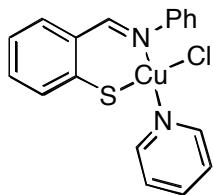


this reaction is:  
 chemoselective  
 regioselective  
 diastereoselective

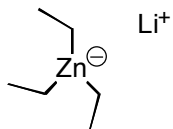


this reaction is:  
 chemoselective  
 regioselective  
 diastereoselective

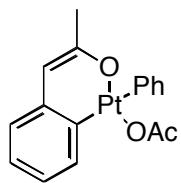
4. Assign an oxidation state to each metal



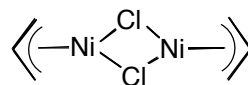
Cu(II)



Zn(II)



Pt(IV)



Ni(II)

5. Complete the online tutorial for conducting a cited reference search using the Web of Science databased. Using any one of the references for this week, conduct a cited reference search. write down the 3 most recent references that cite that work.