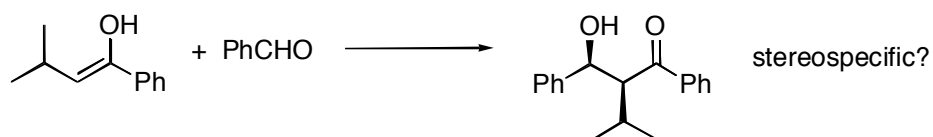
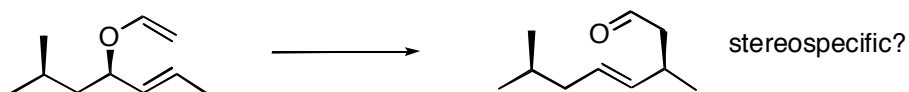
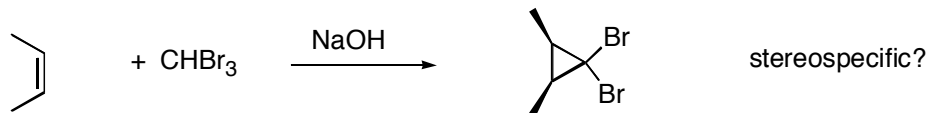
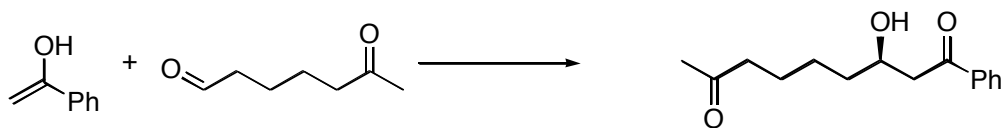


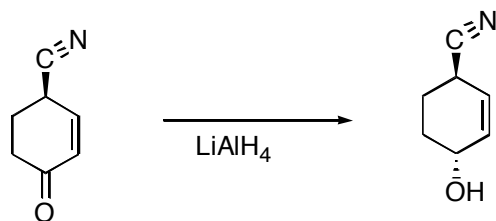
1. Determine if the following stereoselective reactions are also stereospecific



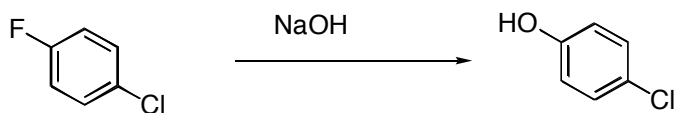
2. Circle all types of selectivity that apply (there may be more than one answer)



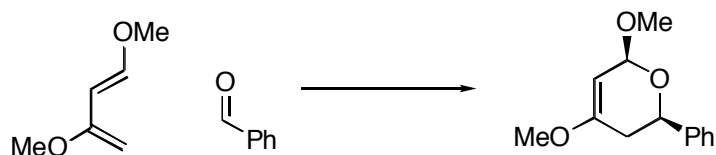
this reaction is:
 chemoselective
 regioselective
 diastereoselective



this reaction is:
 chemoselective
 regioselective
 diastereoselective

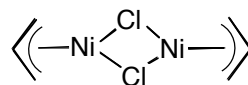
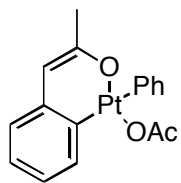
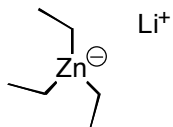
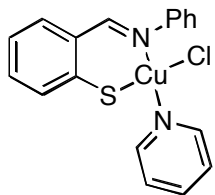


this reaction is:
 chemoselective
 regioselective
 diastereoselective



this reaction is:
 chemoselective
 regioselective
 diastereoselective

4. Assign an oxidation state to each metal



5. Complete the online tutorial for conducting a cited reference search using the Web of Science databased. Using any one of the references for this week, conduct a cited reference search. write down the 3 most recent references that cite that work.