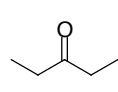
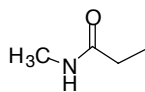


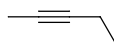
1. Match each compound with its IR spectrum. All IR spectra were recorded with neat samples unless noted otherwise. 3 points each. Note: for transmittance, the smaller numbers refer to the most intense peaks.



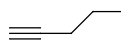
A (CCl₄ soln)



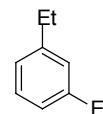
B



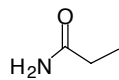
C



D



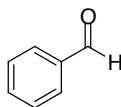
E



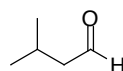
F
(KBr pellet)



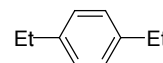
G



H

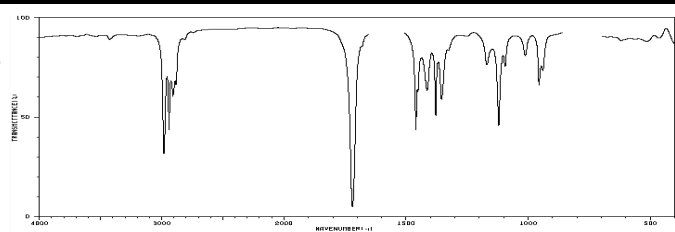


I



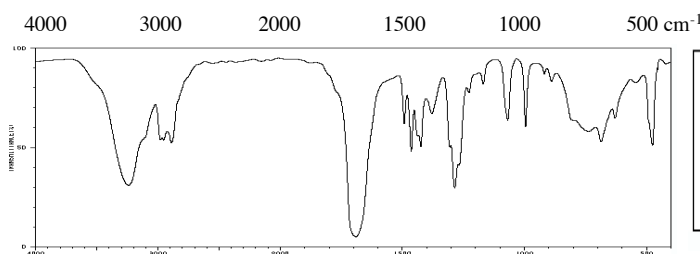
J

answer

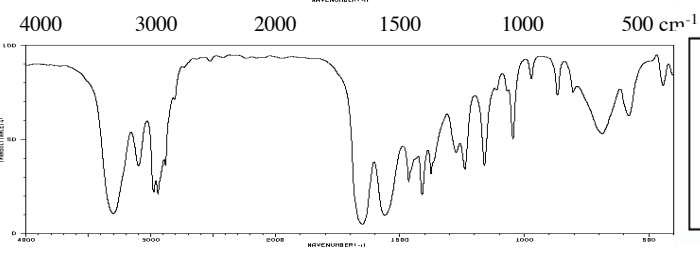


ν ← transmittance

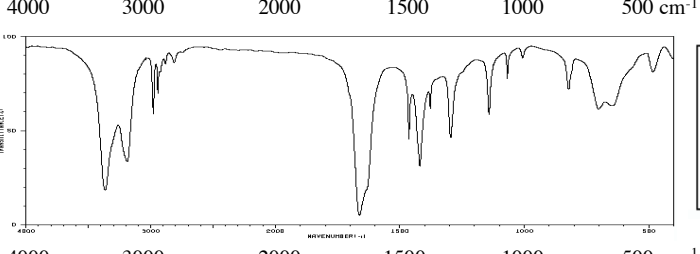
3426	86	1462	60	1012	77
2981	30	1414	60	956	64
2940	42	1379	49	940	70
2908	68	1366	67	620	84
2883	64	1170	72	520	84
1720	4	1121	49	514	84
1460	42	1096	72	466	86



3241	29	1438	69	996	68	646	79
2980	52	1425	49	919	84	476	64
2952	52	1379	64	890	79	467	84
2890	60	1286	28	882	81		
1690	4	1228	74	738	55		
1493	80	1169	79	886	50		
1464	46	1089	60	629	62		



3299	10	1464	26	972	79
3097	34	1411	20	868	70
2976	21	1375	30	805	72
2941	20	1274	41	807	60
2881	35	1239	33	581	60
1651	4	1161	34	444	77
1560	9	1046	47		



3366	17	2811	84	1068	74
3189	32	1662	4	1008	84
2978	57	1464	45	822	88
2957	81	1420	29	702	68
2942	66	1378	58	691	60
2924	79	1298	44	647	80
2880	81	1143	67	483	79

