

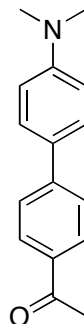
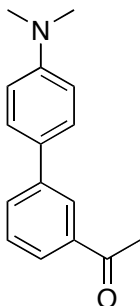
Chem 332
Exam 1
March 10, 2009
Prof. Fox
50 minutes
80 points

Show your work in detail

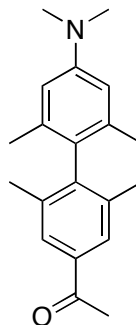
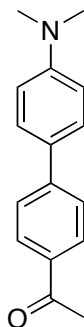
WRITE YOUR NAME ON EVERY PAGE

NAME _____

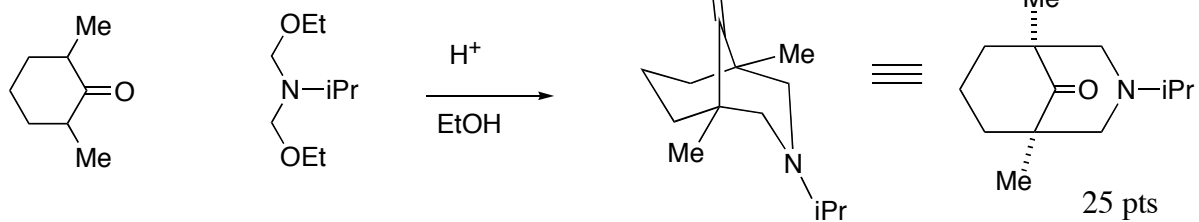
1 Circle the product below that is the stronger amine base. Provide a detailed but brief explanation to support your answer. Use chemical structures to support your answer. (15 points)



2 Circle the product below that is the stronger amine base. Provide a detailed but brief explanation to support your answer. Use chemical structures to support your answer. (15 points)



3. Provide a detailed arrow pushing mechanism.



- 4 Provide a synthesis of **2** from **1** and any materials that contain **3 carbons or less**. Reagents that do not become incorporated into the product (e.g. nBuLi, PPh₃) may be employed

