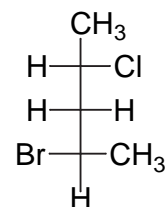
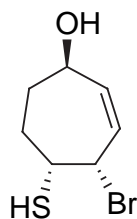
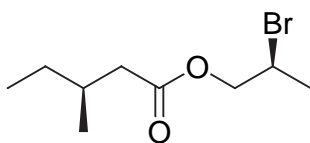
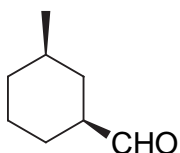


Chem 331: Problem Set #4 (Hour Test practice questions)

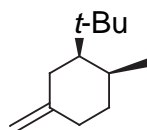
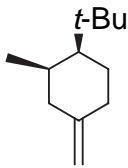
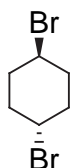
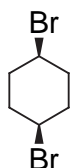
1) Draw the structure:

(2S, 4Z)-4-bromo-2-methyl-4-hexenal

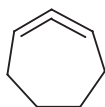
2) Give the IUPAC name for each compound



3) For each pair, indicate which is more stable. Use a clear picture to explain why



4) 1,2-cycloheptadiene is not a stable molecule. Use a clear picture and less than 20 words to explain why.



5) Provide a mechanism

