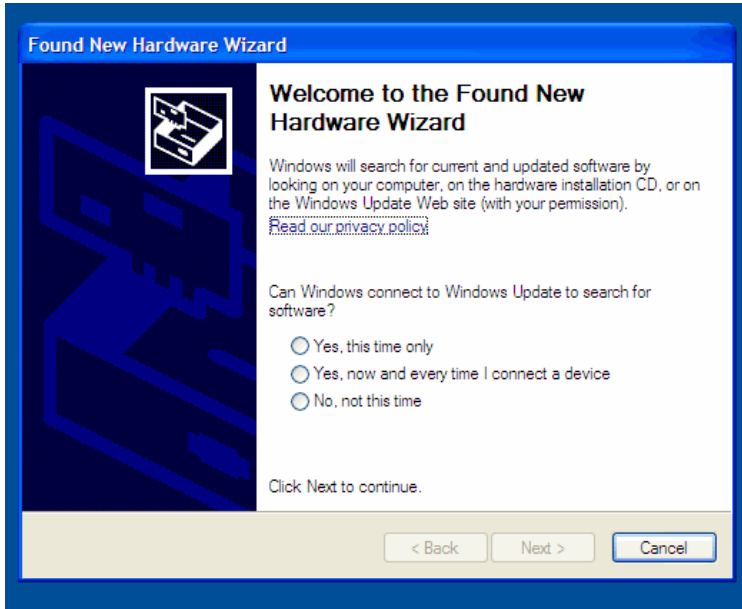
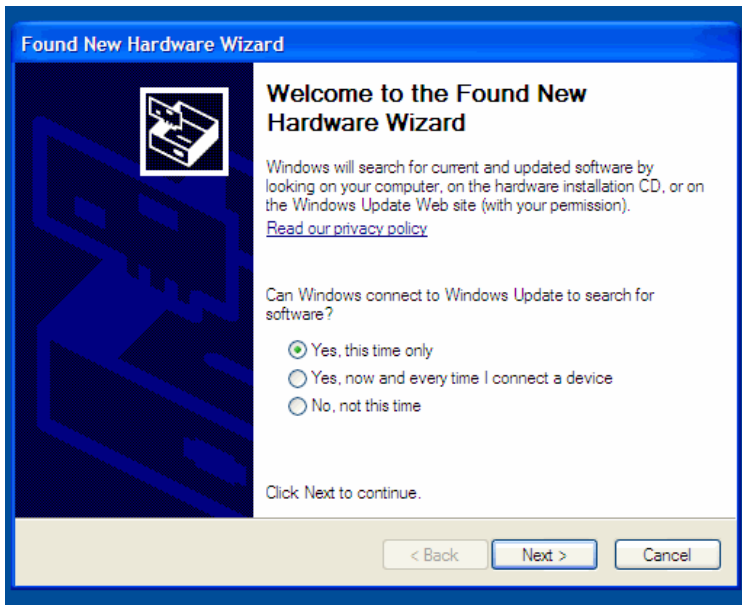


Some people found when they connected their laptop to a receiver and turned on the power that they were getting a message regarding the need to install the PRS Receiver software.

If you see the message – Found New Hardware, and the following pop-up appears:

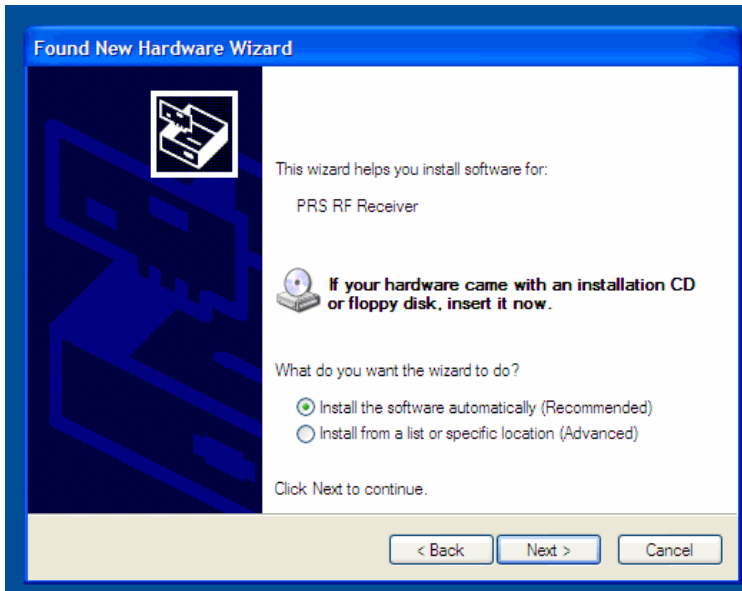


Select, ->Yes, this time only.



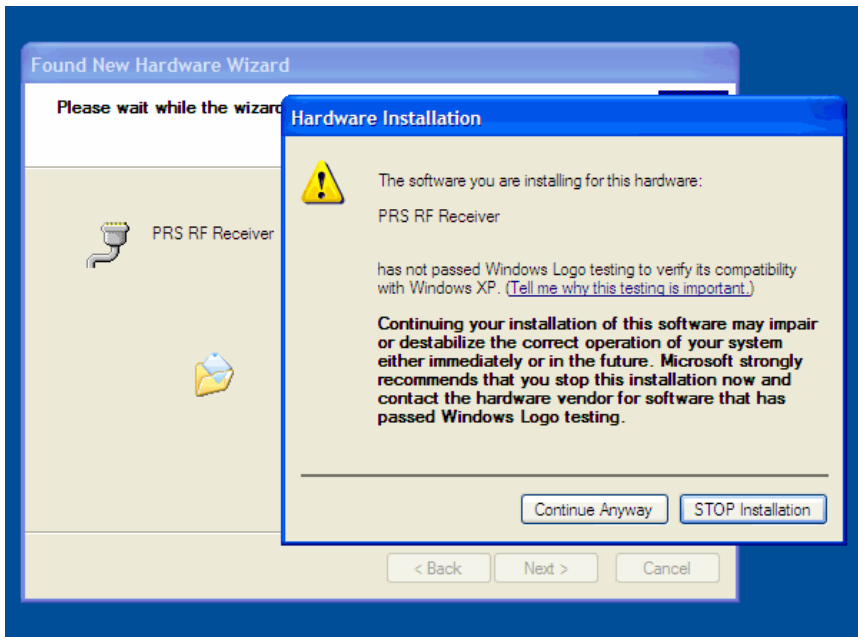
Then select Next. The following pop-up will appear.

Select -> Install the software automatically. (It will look in the files that are on your computer when you first installed the software.)



Select Next.

You should see a pop-up displaying the PRS RF Receiver software being installed. If you see the message below – select -> Continue Anyway.



When it is complete you should see Finish.

This should only happen once, then you should be all set.