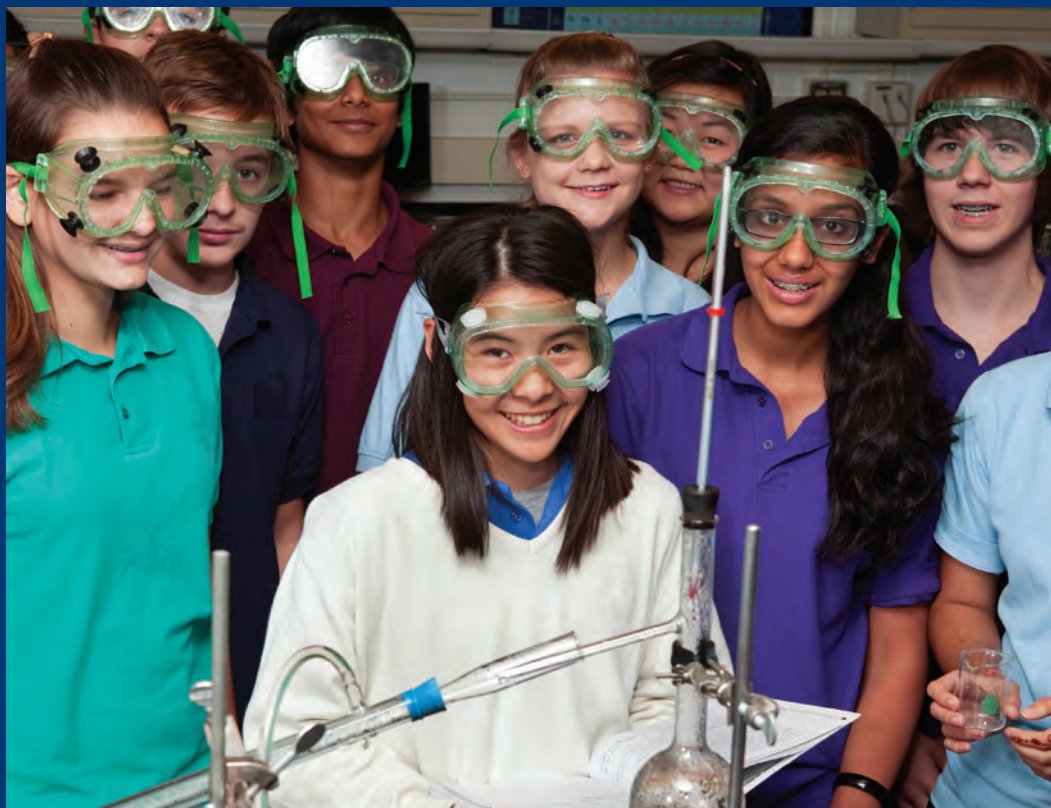


**DELAWAREANS
FIRST.**

FIRST in Outreach.

FIRST in Admission.

FIRST in Financial
Accessibility.



OFFICE OF INSTITUTIONAL RESEARCH

FACTS & FIGURES

2011-2012

Dare to be first.

**UNIVERSITY OF
DELAWARE**





FACTS & FIGURES

2011 – 2012

**Office of Institutional Research
University of Delaware Enterprise Warehouse (UDEW)**

Heather A. Kelly

Director

hkelly@udel.edu

Allison M. Walters

Assistant Director

awalters@udel.edu

Kathleen F. Collison

Data Warehouse Manager

katc@udel.edu

Lynne R. Govatos

Institutional Research Analyst

lgovatos@udel.edu

Denise M. Lindsey

Institutional Research Analyst

dlindsey@udel.edu

Hayim S. Weiss

Institutional Research Analyst

hsweiss@udel.edu

Qin Zhang

Institutional Research Analyst

qzhang@udel.edu

Patricia E. Kelly

Records Technician

pek@udel.edu

Telephone: (302) 831-2021 Fax: (302) 831-8530

E-mail: irp@udel.edu

Institutional Research Homepage on the Internet: <http://www.udel.edu/IR/>

UD Homepage on the Internet: <http://www.udel.edu/>

MEMBERS OF THE BOARD OF TRUSTEES

As of September 2011

Ex-Officio Members

Jack Markell, *Governor of the State of Delaware*
Teri Quinn Gray, *President of the State Board of Education*
William H. Narvel, Jr., *Master of the State Grange*
Patrick T. Harker, *President of the University*

Officers of the Board

A. Gilchrist Sparks III, *Chairman*
John R. Cochran, *Vice Chair*
Mary Jane Willis, *Vice Chair*
Carey M. Koppenhaver, *Secretary-Treasurer*

Elected and Appointed Members

Tony Allen	T. Henley Graves
Grace Bennett	Scott A. Green
James C. Borel	Terri Kelly
Thomas J. Burns	Dennis E. Klima
Irwin G. Burton III	Cynthia Primo Martin
R.R.M. Carpenter III	Christopher H. Schell
Allison B. Castellanos	Everett C. Toomey
William B. Chandler III	H. Wesley Towers, Jr.
Howard E. Cosgrove	P. Coleman Townsend, Jr.
Robert A. Fischer, Jr.	Sherman L. Townsend
Michael S. Geltzeiler	John E. Wallace, Jr.
Stuart M. Grant	Kenneth C. Whitney

Honorary Counselor

Andrew B. Kirkpatrick, Jr.

Trustees *Emeriti*

Werner C. Brown	Sally H. Higgins
Robert W. Gore	Robert F. Rider

ADMINISTRATIVE LEADERS

PATRICK T. HARKER, President of the University

TOM APPLE, Provost

MARK A. BARTEAU, Senior Vice Provost for Research and Strategic Initiatives

NANCY BRICKHOUSE, Deputy Provost

DAVID L. BROND, Vice President for Communications and Marketing

JENNIFER W. DAVIS, Vice President for Finance and Administration

SCOTT R. DOUGLASS, Executive Vice President and University Treasurer

MICHAEL A. GILBERT, Vice President for Student Life

PIERRE D. HAYWARD, Vice President and University Secretary

CARL JACOBSON, Vice President for Information Technologies

BERNARD MUIR, Director of Athletics and Recreation Services

DAVID SINGLETON, Vice President for Facilities and Auxiliary Services

MONICA M. TAYLOR, Vice President for Development and Alumni Relations

LAWRENCE WHITE, Vice President and General Counsel

PATRICIA PLUMMER WILSON, Vice President and Chief of Staff

COLLEGE ADMINISTRATION

ROBIN MORGAN, Dean, College of Agriculture and Natural Resources

GEORGE WATSON, Dean, College of Arts and Sciences

BRUCE WEBER, Dean, Alfred Lerner College of Business and Economics

NANCY TARGETT, Dean, College of Earth, Ocean, and Environment

LYNN OKAGAKI, Dean, College of Education and Human Development

BABATUNDE A. OGUNNAIKE, Interim Dean, College of Engineering

KATHLEEN MATT, Dean, College of Health Sciences

2011-12 FACTS & FIGURES

Table of Contents

	<u>Page No.</u>
Mission and Vision	1
At A Glance	3
Synopsis of Undergraduate Degree Programs and Majors	5
Synopsis of Graduate Degree Programs	7
Twenty-Five Most Popular Undergraduate Majors	9
 Students	
Average SAT Scores By Residence for First-Time Freshmen	10
First-Time Freshman Admissions Activity	11
Distribution of Completed Admissions Applications and Accepted Offers	12
- Completed Applications and Offers Accepted (figure)	12
Enrollment By College or Division and Time Status	13
- Trends in Total Enrollment (figure)	16
Ethnicity of Students By Time Status	17
Undergraduate Enrollment By Gender	19
Graduate Enrollment By Gender	20
Enrollment By Residence Status	21
Newark Campus Retention Rates	23
Newark Campus Graduation Rates	24
Associate in Arts Program Retention Rates	25
Associate in Arts Program Graduation Rates	26
Degrees Granted By College and Level	27
Employment and Educational Status of Baccalaureates	28
 Personnel	
Employees By Ethnicity and EEO Category	29
Full-Time Employees By Gender	32
Number of Faculty By Rank and Tenure Status	33
Tenure Status Among Full-Time Tenure Track Faculty	34
Average Total Compensation of Full-Time Faculty	35
Full-Time Employees' Salary Principal Source of Funding	36

Table of Contents, continued

	<u>Page No.</u>
Finances	
Statement of Operating Activities.....	37
Operating Revenue, Expenses and Transfers (figure)	38
Change in Net Assets	39
Externally Sponsored Activities	40
Undergraduate Tuition, Fees, Room and Board Charges	41
Undergraduate Student Charges at Delaware and Admissions Competitors.....	42
 Facilities	
Building Inventory	43
Land Inventory	44
University Library	45
 University of Delaware Administrative Organizational Chart	
University of Delaware Regional, National and Specialized Accreditors	



MISSION AND VISION

MISSION STATEMENT

The University of Delaware exists to cultivate learning, develop knowledge, and foster the free exchange of ideas. State-assisted yet privately governed, the University has a strong tradition of distinguished scholarship, research, teaching, and service that is grounded in a commitment to increasing and disseminating scientific, humanistic, and social knowledge for the benefit of the larger society. Founded in 1743 and chartered by the state in 1833, the University of Delaware today is a land-grant, sea-grant, and space-grant university.

The University of Delaware is a major research university with extensive graduate programs that is also dedicated to outstanding undergraduate and professional education. University faculty are committed to the intellectual, cultural, and ethical development of students as citizens, scholars, and professionals. University graduates are prepared to contribute to a global society that requires leaders with creativity, integrity, and a dedication to service.

The University of Delaware promotes an environment in which all people are inspired to learn, and encourages intellectual curiosity, critical thinking, free inquiry, and respect for the views and values of an increasingly diverse population.

An institution engaged in addressing the critical needs of the state, nation, and global community, the University of Delaware carries out its mission with the support of alumni who span the globe and in partnership with public, private, and nonprofit institutions in Delaware and beyond.

GUIDING PRINCIPLES

The University of Delaware's strategic plan was adopted in May 2008 and defines the aspirations and initiatives that will advance the University on a Path to Prominence™. The following five guiding principles identify UD's core values:

- Delaware First
- Diversity
- Partnership
- Engagement
- Impact

STRATEGIC MILESTONES

The following strategic milestones build upon key strengths and critical capabilities of the University. The realization of each college, school, department and unit's strategic goals, aligned to these shared milestones, will assist in fulfilling the mission and vision of the University. In October 2010 a summary report assessing the University's progress on its Path to Prominence was developed and details the academic and administrative accomplishments, implementation efforts, current initiatives and future directions and challenges for UD. This report can be found at <http://www.udel.edu/prominence>.

- A Diverse and Stimulating Undergraduate Academic Environment
- A Premier Research and Graduate University
- Excellence in Professional Education
- The Initiative for the Planet
- The Global Initiative
- The Engaged University



2011-12

AT A GLANCE

History/Location: The University of Delaware, a state assisted institution, is a Land Grant, Sea Grant, Space Grant, Carnegie Research University (very high research activity). The University, with origins in 1743, was chartered by the State of Delaware in 1833. A Women's College was opened in 1914, and in 1945 UD became permanently coeducational. The main campus is located in Newark, Delaware, a suburban community of nearly 30,000, situated midway between Philadelphia and Baltimore. Courses are also offered at the Wilmington campus and at other locations throughout the State, including Dover, Georgetown, Milford, and Lewes.

Academic Schools, Programs, and Degrees: Agriculture and Natural Resources; Arts and Sciences; Business and Economics; Earth, Ocean, and Environment; Education and Human Development; Engineering; and Health Sciences. UD offers 3 associate's programs, 147 bachelor's programs, 119 master's programs (with 15 joint degrees offered within), and 54 doctoral programs. In 2010-11, UD awarded 252 associate's degrees, 3,621 bachelor's degrees, 813 master's degrees, and 252 doctoral degrees. Doctoral and professional degrees were awarded in Agriculture, Business and Economics, Education, Engineering, Human Development and Family Studies, Marine Studies, Nursing, Urban Affairs and Public Policy, and a range of Arts & Sciences disciplines (including Art History, Biological Sciences, Chemistry and Biochemistry, Computer Science, English, History, Linguistics and Cognitive Science, Applied Mathematics, Physical Therapy, Physics, Political Science and International Relations, Psychology, and Sociology).

Institutional Accreditation: The University of Delaware has been continuously accredited by the Middle States Commission on Higher Education since that association's inception in 1921. The University's accreditation was reaffirmed in 2011 and its next self-study evaluation is scheduled for 2016. The regional, national and specialized accrediting organizations that accredit UD's programs and degrees appear at the end of this book.

Faculty: In 2011-12, there are 1,131 full-time faculty positions. Almost 80% of full-time tenure-eligible faculty are tenured and almost 90% of full-time faculty hold the doctorate or terminal professional degree in their field. Average total compensation in 2011-12 is \$180,935 for Full Professors, \$127,339 for Associate Professors, and \$109,501 for Assistant Professors.

Enrollment: Fall 2011 enrollment totals 21,489 which include 17,092 undergraduates, 3,617 graduate students, and 780 professional and continuing studies students. 16,262 (95%) of undergraduate and 2,750 (76%) of graduate students are enrolled on a full-time basis. 43% of undergraduate students are male. 64% of undergraduate and 74% of graduate students are from out-of-state. 4.7% of undergraduate and 4.8% of graduate students are African-American. Approximately 44% of undergraduate students live in residence halls.

Admissions/Retention: Over 23,600 students applied to the University of Delaware for Fall 2011 enrollment. 4,258 (29.5%) first-time freshmen accepted their admission offers. Average SAT score (critical reading plus mathematics) for first-time Newark Campus freshmen was 1221. On average, 92% of Newark Campus freshmen return for their sophomore year and over 3 out of 4 students graduate within five years.

Costs: Annual full-time undergraduate tuition and fees for 2011-12 are \$11,192 (in-state) and \$27,462 (out-of-state). Room and board is \$10,196. Total undergraduate costs for 2011-12 are \$21,388 (in-state) and \$37,658 (out-of-state).

Finances: For Fiscal Year 2011, Total Operating Revenues were \$810.1 million, including \$116.2 million for State Appropriations. Total Operating Expenses and Transfers were \$810.1 million. Externally Funded Activity totaled \$196.4 million.

Institutional Affiliations: UD is a member of the Association of Public and Land Grant Universities (APLU). In athletics, UD began NCAA Division I competition in 1973 for men and 1982 for women. UD currently competes in the Colonial Athletic Association (CAA) for all sports. Football competes at the Championship Subdivision level, and all other sports compete at the Division I level.

SYNOPSIS OF UNDERGRADUATE DEGREE PROGRAMS AND MAJORS

COLLEGE OF AGRICULTURE AND NATURAL RESOURCES	<i>Associate in Science</i>	Agriculture and Natural Resources	
	<i>Bachelor of Arts</i>	Environmental Studies	
	<i>Bachelor of Science</i>	Agriculture and Natural Resources	Food Science
		Agricultural Education	Food Science and Technology
		Animal and Food Sciences	Landscape Horticulture and Design
		Ecology	Natural Resource Management
		Engineering Technology	Plant Protection
		Entomology	Plant Science
		Environmental Science	Pre-Veterinary Medicine and Animal Biosciences
		Environmental Soil Science	Resource Economics
		Food and Agribusiness Marketing and Management	Statistics
			Wildlife Conservation
COLLEGE OF ARTS AND SCIENCES	<i>Associate in Arts</i>	University Studies	
	<i>Bachelor of Arts</i>	Anthropology	History Education
		Anthropology Education	International Relations
		Art	Italian Education
		Art Conservation	Latin American & Iberian Studies
		Art History	Latin Education
		Asian Studies	Liberal Arts - Engineering
		Biological Sciences	Liberal Studies
		Biological Sciences Education	Linguistics
		Black American Studies	Mathematics
		Chemistry	Mathematics Education
		Chemistry Education	Music
		Communication	Philosophy
		Comparative Literature	Physics
		Criminal Justice	Physics Education
		English	Political Science
		English Education	Political Science Education
		Environmental Studies	Psychology
		European Studies	Psychology Education
		Foreign Languages and Literatures Education	Public Policy French
		French/Political Science	Sociology
		German Education	Sociology Education
		German/Political Science	Spanish Education
		History and Foreign Language	Spanish/Political Science
		History	Theatre Production
			Women's Studies
	<i>Bachelor of Arts in Liberal Studies</i>	Liberal Studies	
	<i>Bachelor of Fine Arts</i>	Fine Arts	Visual Communications
	<i>Bachelor of Music</i>	Applied Music--Instrumental	Music History and Literature
		Applied Music--Piano	Music Education--Instrumental
		Applied Music--Voice	Music Education--General/Choral
		Music Composition	Music Theory
		Music Theory and Composition	
	<i>Bachelor of Science</i>	Apparel Design	Mathematics Education
		Biochemistry	Mathematics and Economics
		Biological Sciences	Neuroscience
		Chemistry	Organizational & Community Leadership
		Cognitive Science	Physics
		Environmental Science	Psychology
		Fashion Merchandising	Quantitative Biology
		Leadership	
		Mathematics	
ALFRED LERNER COLLEGE OF BUSINESS AND ECONOMICS	<i>Bachelor of Arts</i>	Economics	Economics Education
	<i>Bachelor of Science</i>	Accounting	International Business Studies
		Economics	Management Information Systems
		Finance	Management
		Hospitality Industry Studies	Marketing
		Hotel, Restaurant and Institutional Management	Operations Management
			Sport Management

COLLEGE OF EARTH, OCEAN, AND ENVIRONMENT	<i>Bachelor of Arts</i>	Earth Science Education Environmental Studies Geography	Geography Education Geology
	<i>Bachelor of Science</i>	Environmental Science Environmental Studies Geology	Marine Science
COLLEGE OF EDUCATION AND HUMAN DEVELOPMENT	<i>Associate in Arts</i>	Elementary Teacher Education	
	<i>Bachelor of Science in Education</i>	Elementary Teacher Education	
	<i>Bachelor of Science</i>	Early Childhood Education Human Services	Human Services, Education & Public Policy
COLLEGE OF ENGINEERING	<i>Bachelor of Arts</i>	Computer Science	
	<i>Bachelor of Science</i>	Computer Science Energy and Environmental Policy	Environmental Science Information Systems
	<i>Bachelor of Biomedical Engineering</i>	Biomedical Engineering	
	<i>Bachelor of Chemical Engineering</i>	Chemical Engineering	
	<i>Bachelor of Civil Engineering</i>	Civil Engineering	
	<i>Bachelor of Computer Engineering</i>	Computer Engineering	
	<i>Bachelor of Electrical Engineering</i>	Electrical Engineering	
	<i>Bachelor of Environmental Engineering</i>	Environmental Engineering	
	<i>Bachelor of Mechanical Engineering</i>	Mechanical Engineering	
COLLEGE OF HEALTH SCIENCES	<i>Bachelor of Science</i>	Applied Nutrition Athletic Training Dietetics Exercise Science Health Behavior Management	Health Behavior Science Health and Physical Education Health Studies Medical Technology Nutritional Sciences
	<i>Bachelor of Science in Nursing</i>	Nursing	Baccalaureate for the Registered Nurse (B.R.N.)

Source: Office of Institutional Research/UDEW

SYNOPSIS OF GRADUATE DEGREE PROGRAMS

COLLEGE OF AGRICULTURE AND NATURAL RESOURCES	<i>Master of Arts</i>	Agricultural Education	
	<i>Master of Science</i>	Agriculture and Resource Economics Animal Science Bioresources Engineering Entomology Food Science	Operations Research Plant and Soil Sciences Public Horticulture Statistics Water Science and Policy Wildlife Ecology
	<i>Doctor of Philosophy</i>	Animal and Food Science Entomology and Wildlife Ecology Operations Research	Plant and Soil Sciences Water Science and Policy
COLLEGE OF ARTS AND SCIENCES	<i>Master of Arts</i>	American Material Culture Art Art History Chemistry and Biochemistry Chemistry Communication Criminology English Foreign Languages and Literatures Foreign Languages and Pedagogy	Historic Preservation History Liberal Studies Linguistics and Cognitive Science Mathematics Political Science and International Relations Psychology Sociology Urban Affairs and Public Policy
	<i>Master of Fine Arts</i>	Fine Arts	Theatre
	<i>Master of Music</i>	Music	
	<i>Master of Science</i>	Applied Mathematics Art Conservation Biological Sciences Biomechanics and Movement Science Biotechnology - Professional Science Master's Chemistry	Chemistry and Biochemistry Disaster Science and Management Fashion and Apparel Studies Mathematics Neuroscience Physics Water Science and Policy
	<i>Master of Public Administration</i>	Public Administration	
	<i>Doctor of Philosophy</i>	Applied Mathematics Art History Biological Sciences Biological Sciences/Neuroscience Biomechanics and Movement Science Chemistry Chemistry and Biochemistry Criminology Disaster Science and Management	English History Linguistics Mathematics Preservation Studies Physics Political Science and International Relations Psychology Sociology Urban Affairs and Public Policy Water Science and Policy
	<i>Master of Arts</i>	Economics Economics Education	Economics for Education Economics and Entrepreneurship for Educators
ALFRED LERNER COLLEGE OF BUSINESS AND ECONOMICS	<i>Dual MBA and Master of Arts</i>	Economics	
	<i>Dual MBA and Engineering Master's Programs</i>	See the College of Engineering	
	<i>Master of Business Administration</i>	Business Administration	
	<i>Dual MBA and Master of Science</i>	Accounting Economics Finance	Information Systems and Technology Management Organizational Effectiveness, Development and Change
	<i>Master of Science in Nursing/Bachelor of Science in Business Administration</i>	Nursing/BS in Business Administration	
	<i>Master of Science</i>	Accounting Economics and Applied Econometrics Finance Hospitality Information Management	Information Systems and Technology Management Organizational Effectiveness, Development and Change
	<i>Doctor of Philosophy</i>	Economics	Economics Education

COLLEGE OF EARTH, OCEAN, AND ENVIRONMENT	<i>Master of Arts</i>	Geography	
	<i>Master of Marine Policy</i>	Marine Policy	
	<i>Master of Science</i>	Geography Geology Marine Studies	Ocean Engineering Water Science and Policy
	<i>Doctor of Philosophy</i>	Climatology Geology Marine Studies	Oceanography Geography Ocean Engineering Water Science and Policy
COLLEGE OF EDUCATION AND HUMAN DEVELOPMENT	<i>Master of Arts</i>	Counseling in Higher Education Education Economics Education School Psychology	Teaching English as a Second Language Teaching (M.A.T.)
	<i>Master of Education</i>	Curriculum and Instruction Education Educational Leadership Educational Technology Exceptional Children and Youth	Higher Education Administration Reading School Counseling School Leadership
	<i>Master of Instruction</i>	Education	Instruction
	<i>Master of Science</i>	Evaluation	Human Development and Family Studies
	<i>Doctor of Education</i>	Educational Leadership	
	<i>Doctor of Philosophy</i>	Economic Education Education Family Studies	Human Development and Family Studies
COLLEGE OF ENGINEERING	<i>Master of Applied Sciences</i>	Civil Engineering	
	<i>Master of Chemical Engineering</i>	Chemical Engineering	
	<i>Master of Chemical Engineering/MBA</i>	Chemical Engineering/Business Administration	
	<i>Master of Civil Engineering</i>	Civil Engineering	
	<i>Master of Civil Engineering/MBA</i>	Civil Engineering/Business Administration	
	<i>Master of Energy and Environmental Policy</i>	Energy and Environmental Policy	
	<i>Professional Science Master</i>	Bioinformatics	
	<i>Master of Science</i>	Bioinformatics and Computational Biology Biomechanics and Movement Science Computer Science	Electrical and Computer Engineering Ocean Engineering Software Engineering Water Science and Policy
	<i>Master of Science/MBA</i>	Electrical and Computer Engineering/Business Administration	
	<i>Master of Engineering: Mechanical</i>	Mechanical Engineering	
	<i>Master of Science: Mechanical Engineering/MBA</i>	Mechanical Engineering/Business Administration	
	<i>Master of Materials Science and Engineering</i>	Materials Science and Engineering	
	<i>Master of Materials Science and Engineering/MBA</i>	Materials Science and Engineering/Business Administration	
	<i>Doctor of Philosophy</i>	Biomechanics and Movement Science Chemical Engineering Civil Engineering Computer Science Electrical and Computer Engineering	Electrical Engineering Energy and Environmental Policy Materials Science and Engineering Mechanical Engineering Ocean Engineering Water Science and Policy
COLLEGE OF HEALTH SCIENCES	<i>Master of Science</i>	Biomechanics and Movement Science Exercise Science	Health Promotion Health Services Administration Human Nutrition
	<i>Master of Science in Nursing</i>	Nursing	
	<i>Dual Bachelor of Science and Master of Science</i>	Nursing	
	<i>Doctor of Philosophy</i>	Applied Physiology Biomechanics and Movement Science	Nursing Science
	<i>Doctor of Physical Therapy</i>	Physical Therapy	

Source: Office of Institutional Research/UDEW

**TWENTY-FIVE MOST POPULAR
UNDERGRADUATE MAJORS**
Fall 2011

Rank	Major
1	Biological Sciences
2	Nursing
3	Finance
4	Psychology
5	Elementary Teacher Education
6	Exercise Science
7	Mechanical Engineering
8	Accounting
9	English
10	Chemical Engineering
11	Criminal Justice
12	Political Science
13	Civil Engineering
14	Marketing
15	Hotel, Restaurant & Institutional Management
16	History
17	Human Services
18	Communication Interest
19	International Relations
20	Fashion Merchandising
21	Business Administration
22	Dietetics
23	Communication
24	Management
25	Pre-Veterinary Medicine & Animal Biosciences

Source: Office of Institutional Research/UDEW

AVERAGE SCHOLASTIC APTITUDE TEST SCORES BY RESIDENCE FOR FIRST-TIME FRESHMEN *Fall 2011*

SAT Critical Reading Scores	
Associate in Arts	
Total¹	503
Newark Campus	
Delawareans	584
Nonresidents	614
Total	605
National Avg.	497
SAT Mathematics Scores	
Associate in Arts	
Total¹	497
Newark Campus	
Delawareans	587
Nonresidents	629
Total	616
National Avg.	514
SAT Writing Scores	
Associate in Arts	
Total¹	491
Newark Campus	
Delawareans	576
Nonresidents	611
Total	601
National Avg.	489

¹ A small number of Non-resident students are included within the Associate in Arts Program averages.

Source: Office of Institutional Research/UDEW

FIRST-TIME FRESHMAN ADMISSIONS ACTIVITY **Fall 2011**

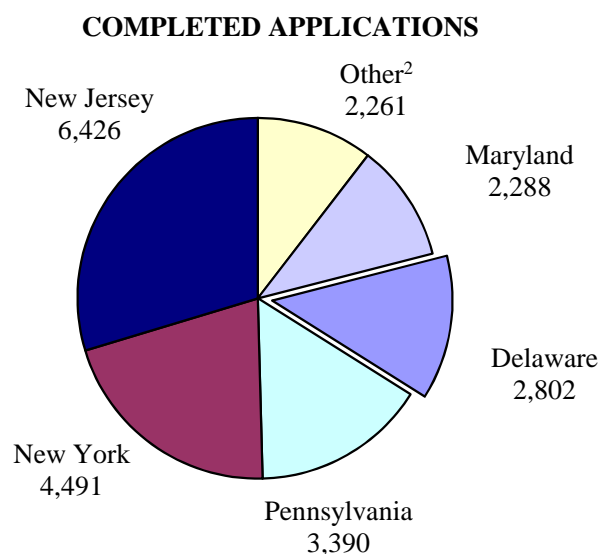
	Total Applications	Completed Applications	Offered Admission	Offer Rate	Offer Accepted	Yield Rate
ALL STUDENTS						
Applied to Newark Campus	24,779	23,647	13,768	58.2%	3,917	28.5%
Applied to Newark Campus, but admitted to Associate in Arts Program	--	--	627	2.7%	318	50.7%
Applied to Associate in Arts Program	65	62	36	58.1%	23	63.9%
TOTAL	24,844	23,709	14,431	60.9%	4,258	29.5%
DELAWAREANS						
Applied to Newark Campus	2,813	2,740	1,793	65.4%	1,137	63.4%
Applied to Newark Campus, but admitted to Associate in Arts Program ¹	--	--	627	22.9%	318	50.7%
Applied to Associate in Arts Program ¹	65	62	36	58.1%	23	63.9%
TOTAL	2,878	2,802	2,456	87.7%	1,478	60.2%
NONRESIDENTS						
Applied to Newark Campus	21,966	20,907	11,975	57.3%	2,780	23.2%
TOTAL	21,966	20,907	11,975	57.3%	2,780	23.2%

¹ Includes a small number of Non-resident students.

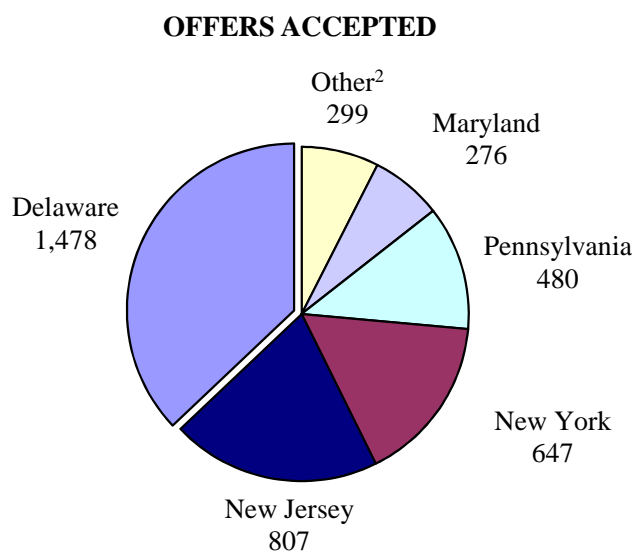
Source: Office of Institutional Research/UDEW

DISTRIBUTION OF COMPLETED ADMISSIONS APPLICATIONS AND ACCEPTED OFFERS FIRST-TIME FRESHMEN FROM SELECT REGIONAL STATES *Fall 2011*

STATE	COMPLETED APPLICATIONS	% OF TOTAL ¹
New Jersey	6,426	29.7%
New York	4,491	20.7%
Pennsylvania	3,390	15.7%
DELAWARE	2,802	12.9%
Maryland	2,288	10.6%
Connecticut	902	4.2%
Massachusetts	834	3.9%
Virginia	441	2.0%
District of Columbia	84	0.4%
TOTAL¹	21,658	100.0%



STATE	OFFERS ACCEPTED	% OF TOTAL ¹
DELAWARE	1,478	37.1%
New Jersey	807	20.2%
New York	647	16.2%
Pennsylvania	480	12.0%
Maryland	276	6.9%
Connecticut	121	3.0%
Massachusetts	114	2.9%
Virginia	54	1.4%
District of Columbia	10	0.3%
TOTAL¹	3,987	100.0%



¹ Total refers to applications and accepted offers from these nine states only.

² Other includes Connecticut, Massachusetts, Virginia, and the District of Columbia.

**ENROLLMENT BY COLLEGE OR DIVISION
AND TIME STATUS
*Fall 2007 Through Fall 2011***

	2007	2008	2009	2010	2011
UNIVERSITY TOTAL	20,342	20,500	21,138	21,177	21,489
Full-Time	17,679	17,881	18,469	18,621	19,022
Part-Time	2,663	2,619	2,669	2,556	2,467
Undergraduate¹	15,983	16,075	16,521	16,661	17,092
Full-Time	15,152	15,287	15,786	15,888	16,262
Part-Time	831	788	735	773	830
Graduate²	3,405	3,448	3,634	3,670	3,617
Full-Time	2,514	2,584	2,671	2,727	2,750
Part-Time	891	864	963	943	867
Professional & Continuing Studies³	954	977	983	846	780
Full-Time	13	10	12	6	10
Part-Time	941	967	971	840	770
College of Agriculture & Natural Resources	833	849	881	877	871
Undergraduate	664	669	698	713	705
Full-Time	606	623	657	670	657
Part-Time	58	46	41	43	48
Graduate	169	180	183	164	166
Full-Time	157	172	175	157	156
Part-Time	12	8	8	7	10
College of Arts & Sciences⁴	7,597	7,525	7,269	7,402	7,447
Undergraduate	6,409	6,288	6,162	6,262	6,321
Full-Time	6,010	5,914	5,821	5,935	5,961
Part-Time	399	374	341	327	360
Graduate	1,188	1,237	1,107	1,140	1,126
Full-Time	1,082	1,140	1,017	1,042	1,026
Part-Time	106	97	90	98	100
Office of University Studies	923	956	1,048	1,126	1,178
(No Graduate Program)					
Undergraduate	923	956	1,048	1,126	1,178
Full-Time	890	916	1,014	1,096	1,156
Part-Time	33	40	34	30	22

ENROLLMENT (Continued)

	2007	2008	2009	2010	2011
Alfred Lerner College of Business & Economics⁵	2,899	3,452	3,396	3,470	3,386
Undergraduate	2,368	2,906	2,786	2,826	2,797
Full-Time	2,314	2,835	2,720	2,757	2,728
Part-Time	54	71	66	69	69
Graduate	531	546	610	644	589
Full-Time	245	253	281	341	329
Part-Time	286	293	329	303	260
College of Earth, Ocean, & Environment⁶	153	165	310	368	429
Undergraduate	39	47	167	215	272
Full-Time	35	44	160	207	264
Part-Time	4	3	7	8	8
Graduate	114	118	143	153	157
Full-Time	112	114	139	149	152
Part-Time	2	4	4	4	5
College of Education & Human Development	2,523	2,071	2,107	1,448	1,410
Undergraduate	1,852	1,401	1,396	997	1,021
Full-Time	1,775	1,345	1,364	965	991
Part-Time	77	56	32	32	30
Graduate	671	670	711	451	389
Full-Time	389	380	409	201	189
Part-Time	282	290	302	250	200
College of Engineering⁷	1,794	1,845	2,056	2,577	2,883
Undergraduate	1,286	1,336	1,510	1,820	2,060
Full-Time	1,255	1,303	1,482	1,770	1,992
Part-Time	31	33	28	50	68
Graduate	508	509	546	757	823
Full-Time	448	463	484	673	731
Part-Time	60	46	62	84	92
College of Health Sciences⁸	2,001	1,992	2,324	2,289	2,353
Undergraduate	1,777	1,804	1,990	1,928	1,986
Full-Time	1,634	1,659	1,824	1,740	1,799
Part-Time	143	145	166	188	187
Graduate	224	188	334	361	367
Full-Time	81	62	166	164	167
Part-Time	143	126	168	197	200

ENROLLMENT (Continued)

	2007	2008	2009	2010	2011
Newark Campus	18,723	18,855	19,391	19,557	19,957
Undergraduate	15,318	15,407	15,757	15,887	16,340
Full-Time	14,519	14,639	15,042	15,140	15,548
Part-Time	799	768	715	747	792
Graduate	3,405	3,448	3,634	3,670	3,617
Full-Time	2,514	2,584	2,671	2,727	2,750
Part-Time	891	864	963	943	867
Associate in Arts: Georgetown	118	148	156	168	148
Undergraduate	118	148	156	168	148
Full-Time	117	144	153	162	145
Part-Time	1	4	3	6	3
Associate in Arts: Dover	115	112	146	144	121
Undergraduate	115	112	146	144	121
Full-Time	113	107	144	141	116
Part-Time	2	5	2	3	5
Associate in Arts: Wilmington	432	408	462	462	483
Undergraduate	432	408	462	462	483
Full-Time	403	397	447	445	453
Part-Time	29	11	15	17	30
University Associate in Arts Program	665	668	764	774	752
Undergraduate	665	668	764	774	752
Full-Time	633	648	744	748	714
Part-Time	32	20	20	26	38

¹ Official 10th Day headcounts, Newark Campus and University Associate in Arts Program combined.

² Graduate students on sustaining status are considered full-time if the student spends at least one-half time on the completion of his/her thesis or dissertation.

³ Professional & Continuing Studies Students are non-matriculated and are unclassified although enrolled in undergraduate and graduate degree credit courses.

⁴ The Fashion and Apparel Studies Department and the School of Public Policy and Administration moved to the College of Arts and Sciences in 2010.

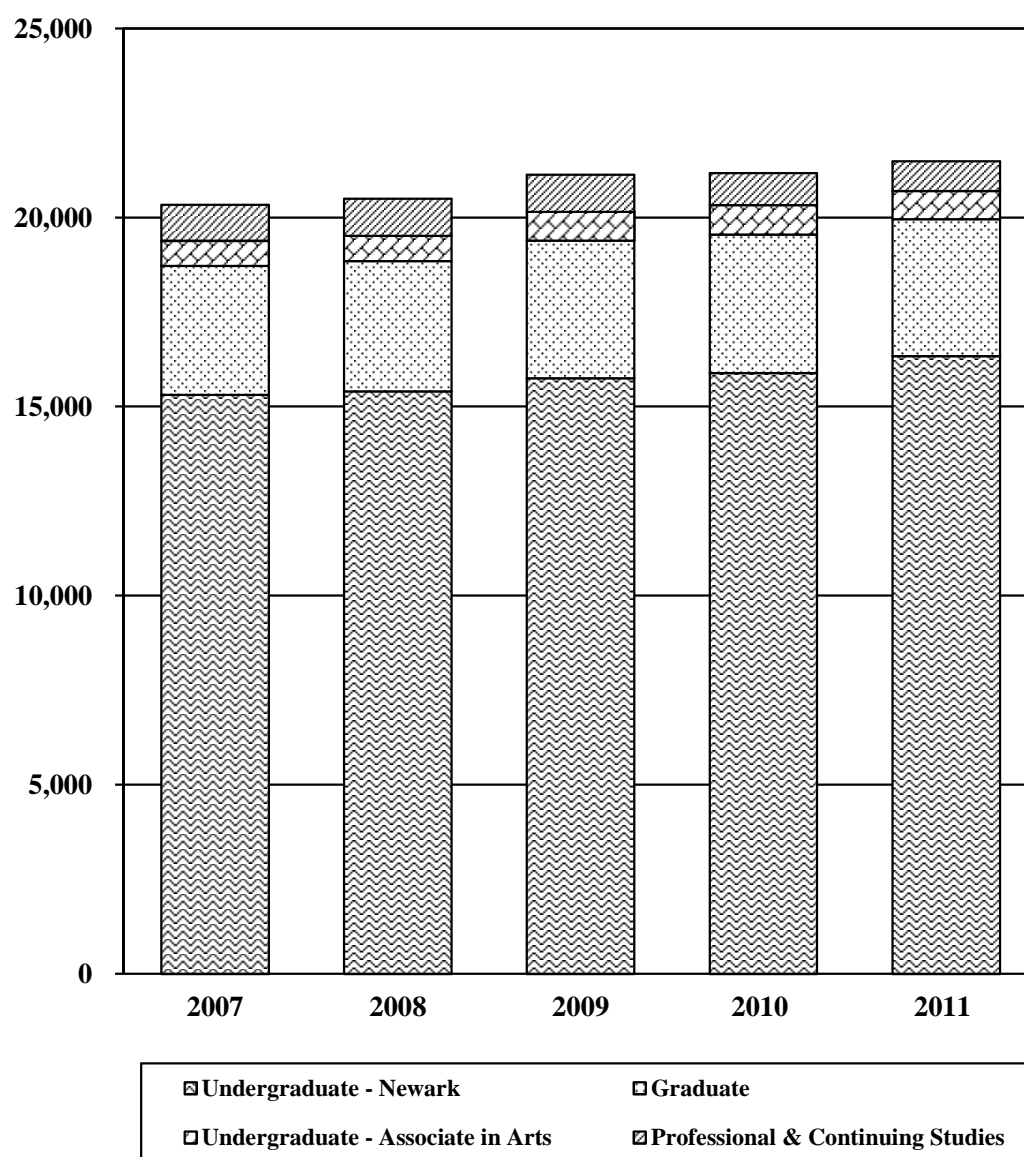
⁵ The Hotel, Restaurant & Institutional Management Department and the Sport Management/Sport Management Interest Program moved to the Alfred Lerner College of Business and Economics in 2008 and 2010, respectively.

⁶ The Geography Department moved to the College of Earth, Ocean & Environment in 2009.

⁷ The Computer Science Department and the Energy and Environmental Policy Program moved to the College of Engineering in 2010.

⁸ The Department of Physical Therapy moved to the College of Health Sciences in 2009.

Source: Office of Institutional Research/UDEW

TRENDS IN TOTAL ENROLLMENT*Fall 2007 Through Fall 2011*

ETHNICITY OF STUDENTS BY TIME STATUS

Fall 2007 Through Fall 2011

A. FULL-TIME MATRICULATED STUDENTS

	2007		2008		2009		2010		2011	
	N	%	N	%	N	%	N	%	N	%
Undergraduate¹										
Total	15,152	100.0	15,287	100.0	15,786	100.0	15,888	100.0	16,262	100.0
White	12,286	81.1	12,256	80.2	12,398	78.5	12,291	77.4	12,587	77.4
African-American	846	5.6	839	5.5	865	5.5	831	5.2	716	4.4
Hispanic	778	5.1	831	5.4	885	5.6	909	5.7	966	5.9
Asian	589	3.9	643	4.2	680	4.3	635	4.0	620	3.8
Native American	49	0.3	42	0.3	29	0.2	20	0.1	15	0.1
Non-Resident Alien	148	1.0	160	1.0	304	1.9	522	3.3	689	4.2
Other ²	456	3.0	516	3.4	625	4.0	680	4.3	669	4.1
Graduate										
Total	2,514	100.0	2,584	100.0	2,671	100.0	2,727	100.0	2,750	100.0
White	1,372	54.6	1,410	54.6	1,414	52.9	1,429	52.4	1,330	48.4
African-American	109	4.3	108	4.2	103	3.9	94	3.4	106	3.9
Hispanic	42	1.7	50	1.9	63	2.4	58	2.1	63	2.3
Asian	64	2.5	73	2.8	72	2.7	82	3.0	97	3.5
Native American	4	0.2	9	0.3	11	0.4	7	0.3	4	0.1
Non-Resident Alien	838	33.3	874	33.8	947	35.5	988	36.2	1,052	38.3
Other ²	85	3.4	60	2.3	61	2.3	69	2.5	98	3.6

B. PART-TIME MATRICULATED STUDENTS

	2007		2008		2009		2010		2011	
	N	%	N	%	N	%	N	%	N	%
Undergraduate¹										
Total	831	100.0	788	100.0	735	100.0	773	100.0	830	100.0
White	643	77.4	624	79.2	573	78.0	599	77.5	633	76.3
African-American	65	7.8	57	7.2	62	8.4	57	7.4	82	9.9
Hispanic	26	3.1	26	3.3	32	4.4	32	4.1	39	4.7
Asian	42	5.1	28	3.6	28	3.8	34	4.4	30	3.6
Native American	7	0.8	8	1.0	4	0.5	2	0.3	1	0.1
Non-Resident Alien	14	1.7	14	1.8	6	0.8	8	1.0	11	1.3
Other ²	34	4.1	31	3.9	30	4.1	41	5.3	34	4.1

B. PART-TIME MATRICULATED STUDENTS (Continued)

	2007		2008		2009		2010		2011	
	N	%	N	%	N	%	N	%	N	%
Graduate										
Total	891	100.0	864	100.0	963	100.0	943	100.0	867	100.0
White	675	75.8	666	77.1	726	75.4	678	71.9	622	71.7
African-American	49	5.5	56	6.5	75	7.8	84	8.9	68	7.8
Hispanic	22	2.5	25	2.9	25	2.6	30	3.2	29	3.3
Asian	52	5.8	54	6.3	58	6.0	66	7.0	61	7.0
Native American	3	0.3	3	0.3	3	0.3	4	0.4	2	0.2
Non-Resident Alien	44	4.9	26	3.0	30	3.1	32	3.4	31	3.6
Other ²	46	5.2	34	3.9	46	4.8	49	5.2	54	6.2

C. PROFESSIONAL & CONTINUING STUDIES STUDENTS

	2007		2008		2009		2010		2011	
	N	%	N	%	N	%	N	%	N	%
Undergraduate										
Total	954	100.0	977	100.0	983	100.0	846	100.0	780	100.0
White	702	73.6	682	69.8	700	71.2	560	66.2	516	66.2
African-American	86	9.0	101	10.3	86	8.7	87	10.3	81	10.4
Hispanic	25	2.6	31	3.2	26	2.6	30	3.5	26	3.3
Asian	47	4.9	55	5.6	61	6.2	48	5.7	48	6.2
Native American	3	0.3	4	0.4	6	0.6	8	0.9	4	0.5
Non-Resident Alien	24	2.5	44	4.5	65	6.6	60	7.1	31	4.0
Other ²	67	7.0	60	6.1	39	4.0	53	6.3	74	9.5

¹ Official 10th Day headcounts, Newark Campus and University Associate in Arts Program combined.

² Other includes Native Hawaiian or Other Pacific Islander, Two or More Races, Non-Specified, or Unknown.

Note: Percentages may not total to 100.0 because of rounding.

Source: Office of Institutional Research/UDEW

UNDERGRADUATE ENROLLMENT BY GENDER
NEWARK CAMPUS
Fall 2007 Through Fall 2011

	2007		2008		2009		2010		2011	
	N	%	N	%	N	%	N	%	N	%
Total - Newark Campus										
Women	8,914	58	8,906	58	9,081	58	9,067	57	9,336	57
Men	6,404	42	6,501	42	6,676	42	6,820	43	7,004	43
College of Agriculture & Natural Resources										
Women	411	62	407	61	433	62	449	63	447	63
Men	253	38	262	39	265	38	264	37	258	37
College of Arts & Sciences¹										
Women	3,768	59	3,725	59	3,691	60	3,889	62	3,947	62
Men	2,641	41	2,563	41	2,471	40	2,373	38	2,374	38
Alfred Lerner College of Business & Economics²										
Women	982	41	1,280	44	1,232	44	1,205	43	1,201	43
Men	1,386	59	1,626	56	1,554	56	1,620	57	1,596	57
College of Earth, Ocean, & Environment³										
Women	22	56	22	47	79	47	111	52	143	53
Men	17	44	25	53	88	53	104	48	129	47
College of Education & Human Development										
Women	1,604	87	1,297	93	1,301	93	948	95	972	95
Men	248	13	104	7	95	7	49	5	49	5
College of Engineering⁴										
Women	281	22	274	21	288	19	339	19	412	20
Men	1,005	78	1,062	79	1,222	81	1,481	81	1,648	80
College of Health Sciences										
Women	1,295	73	1,339	74	1,452	73	1,516	79	1,559	78
Men	482	27	465	26	538	27	413	21	427	22
Office of University Studies										
Women	551	60	562	59	605	58	610	54	655	56
Men	372	40	394	41	443	42	516	46	523	44

¹ The Fashion and Apparel Studies Department and the School of Public Policy and Administration moved to the College of Arts and Sciences in 2010.

² The Hotel, Restaurant & Institutional Management Department and the Sport Management/Sport Management Interest Program moved to the Alfred Lerner College of Business and Economics in 2008 and 2010, respectively.

³ The Geography Department moved to the College of Earth, Ocean & Environment in 2009.

⁴ The Computer Science Department moved to the College of Engineering in 2010.

Source: Office of Institutional Research/UDEW

GRADUATE ENROLLMENT BY GENDER

NEWARK CAMPUS

Fall 2007 Through Fall 2011

	2007		2008		2009		2010		2011	
	N	%	N	%	N	%	N	%	N	%
Total - Newark Campus										
Women	1,807	53	1,802	52	1,889	52	1,895	52	1,820	50
Men	1,598	47	1,646	48	1,745	48	1,775	48	1,797	50
College of Agriculture & Natural Resources										
Women	96	57	95	53	98	54	96	59	89	54
Men	73	43	85	47	85	46	68	41	77	46
College of Arts & Sciences¹										
Women	674	57	677	55	595	54	639	56	616	55
Men	514	43	560	45	512	46	501	44	510	45
Alfred Lerner College of Business & Economics²										
Women	201	38	223	41	253	41	285	44	266	45
Men	330	62	323	59	357	59	359	56	323	55
College of Earth, Ocean, & Environment³										
Women	58	51	54	46	74	52	79	52	77	49
Men	56	49	64	54	69	48	74	48	80	51
College of Education & Human Development										
Women	463	69	459	69	482	68	310	69	271	70
Men	208	31	211	31	229	32	141	31	118	30
College of Engineering⁴										
Women	125	25	134	26	135	25	198	26	214	26
Men	383	75	375	74	411	75	559	74	609	74
College of Health Sciences⁵										
Women	190	85	160	85	252	75	288	80	287	78
Men	34	15	28	15	82	25	73	20	80	22

¹ The Fashion and Apparel Studies Department and the School of Public Policy and Administration moved to the College of Arts and Sciences in 2010.

² The Hotel, Restaurant & Institutional Management Department moved to the Alfred Lerner College of Business and Economics in 2008.

³ The Geography Department moved to the College of Earth, Ocean & Environment in 2009.

⁴ The Computer Science Department and the Energy and Environmental Policy Program moved to the College of Engineering in 2010.

⁵ The Department of Physical Therapy moved to the College of Health Sciences in 2009.

Source: Office of Institutional Research/UDEW

ENROLLMENT BY RESIDENCE STATUS

Fall 2007 Through Fall 2011

	2007		2008		2009		2010		2011	
	N	%	N	%	N	%	N	%	N	%
TOTAL STUDENTS	20,342		20,500		21,138		21,177		21,489	
Delawareans	8,273	41	8,022	39	8,261	39	8,295	39	8,183	38
Nonresidents	12,069	59	12,478	61	12,877	61	12,882	61	13,306	62
NEWARK CAMPUS										
Undergraduate	15,318		15,407		15,757		15,887		16,340	
Delawareans	5,883	38	5,613	36	5,678	36	5,870	37	5,932	36
Nonresidents	9,435	62	9,794	64	10,079	64	10,017	63	10,408	64
Graduate	3,405		3,448		3,634		3,670		3,617	
Delawareans	1,047	31	1,041	30	1,113	31	1,042	28	929	26
Nonresidents	2,358	69	2,407	70	2,521	69	2,628	72	2,688	74
ASSOCIATE IN ARTS PROGRAM	665		668		764		774		752	
Delawareans	643	97	652	98	747	98	755	98	737	98
Nonresidents	22	3	16	2	17	2	19	3	15	2
PROFESSIONAL & CONTINUING STUDIES	954		977		983		846		780	
Delawareans	700	73	716	73	723	74	628	74	585	75
Nonresidents	254	27	261	27	260	26	218	26	195	25

Source: Office of Institutional Research/UDEW

**RETENTION RATES FOR
ENTERING FIRST-TIME, FULL-TIME FRESHMEN
BY GENDER, ETHNICITY & RESIDENCY
NEWARK CAMPUS**

NEWARK CAMPUS	2001	2002	2003	2004	2005	2006	2007	2008	2009	2010
Total # of Freshmen	3,362	3,401	3,433	3,442	3,506	3,252	3,571	3,500	3,811	3,365
% Retention to 2nd Fall	88.6%	89.9%	88.4%	88.8%	90.3%	90.4%	91.4%	91.2%	92.0%	92.5%
Males	86.8%	88.8%	87.4%	89.5%	89.7%	90.3%	91.3%	90.8%	92.7%	92.1%
Females	90.0%	90.6%	89.2%	88.4%	90.7%	90.7%	91.4%	91.4%	91.4%	92.8%
African-Americans	86.9%	87.0%	89.1%	85.9%	87.0%	88.4%	89.2%	86.8%	86.2%	87.6%
American Indians	54.5%	71.4%	81.8%	87.5%	84.2%	71.4%	100.0%	100.0%	75.0%	0.0%
Asians	89.7%	89.9%	89.0%	86.1%	87.7%	88.6%	91.0%	92.7%	82.9%	96.6%
Hispanics	85.4%	83.3%	84.9%	82.1%	85.8%	88.4%	91.4%	91.8%	90.6%	88.8%
Non-Resident Aliens	92.9%	80.0%	85.7%	66.7%	77.8%	100.0%	87.9%	86.4%	91.9%	95.2%
Whites	89.0%	90.3%	88.7%	89.6%	91.0%	90.6%	91.8%	91.4%	92.3%	92.6%
Residents	88.9%	89.0%	87.3%	88.5%	88.9%	91.5%	91.8%	92.3%	93.8%	93.9%
Nonresidents	88.5%	90.3%	89.2%	89.0%	91.0%	89.9%	91.2%	90.8%	91.1%	91.8%

Note: All entering new freshman cohorts adjusted to comply with IPEDS Graduation Rate Survey Definitions.

Source: Office of Institutional Research/UDEW

**GRADUATION RATES FOR
ENTERING FIRST-TIME, FULL-TIME FRESHMEN
BY GENDER, ETHNICITY & RESIDENCY
NEWARK CAMPUS**

NEWARK CAMPUS	2002	2003	2004	2005	2006
Total Number in Cohort	3,401	3,433	3,442	3,506	3,252
% Graduating within Four Years	67.1	61.3	61.8	65.2	66.9
Males	58.2	53.9	54.1	56.3	60.0
Females	72.8	66.9	67.3	71.3	71.5
African-Americans	41.1	44.4	38.7	45.2	42.5
American Indians	14.3	25.0	57.1	50.0	14.3
Asians	62.0	59.9	51.6	61.3	60.1
Hispanics	66.1	54.5	54.8	57.5	57.8
Non-Resident Aliens	42.1	52.4	46.2	30.8	20.0
Whites	69.0	63.3	64.5	67.2	68.9
Residents	55.7	49.4	51.0	53.5	56.5
Nonresidents	73.7	69.1	68.0	71.0	71.6
% Graduating within Five Years	77.9	73.7	74.9	76.0	77.8
Males	72.7	69.4	71.8	69.9	73.8
Females	81.2	76.9	77.1	80.3	80.4
African-Americans	56.8	59.6	52.8	60.1	61.6
American Indians	42.9	50.0	71.4	60.0	42.9
Asians	74.1	71.5	67.7	70.8	74.7
Hispanics	71.6	68.5	67.5	69.4	72.8
Non-Resident Aliens	57.9	76.2	53.8	38.5	20.0
Whites	79.6	75.3	77.3	78.0	79.1
Residents	72.0	66.4	69.0	69.1	72.4
Nonresidents	82.0	78.5	78.2	79.5	80.2
% Graduating within Six Years	79.5	75.3	77.1	78.4	
Males	75.3	71.6	75.2	73.1	
Females	82.3	78.1	78.5	82.1	
African-Americans	58.9	61.6	56.3	64.3	
American Indians	57.1	50.0	85.7	65.0	
Asians	79.2	72.2	73.7	73.0	
Hispanics	73.4	69.7	70.5	73.6	
Non-Resident Aliens	57.9	76.2	53.8	46.2	
Whites	81.1	76.9	79.2	80.1	
Residents	73.7	69.5	73.0	73.4	
Nonresidents	82.3	79.3	79.5	80.9	

Note: Data comply with IPEDS Graduation Rate Survey Definitions.

Source: Office of Institutional Research/UDEW

**RETENTION RATES FOR
ENTERING FIRST-TIME, FULL-TIME FRESHMEN
BY GENDER, ETHNICITY & RESIDENCY
ASSOCIATE IN ARTS PROGRAM**

ASSOCIATE IN ARTS PROGRAM	2006	2007	2008	2009	2010
GEORGETOWN					
Total # of Freshmen	70	63	76	79	90
% Retention to 2nd Fall	74.3%	90.5%	72.4%	77.2%	73.3%
Males	64.5%	83.3%	67.7%	92.6%	70.0%
Females	82.1%	93.3%	75.6%	69.2%	76.0%
African-Americans	66.7%	100.0%	85.7%	100.0%	100.0%
American Indians	--	--	--	--	--
Asians	0.0%	50.0%	100.0%	100.0%	0.0%
Hispanics	100.0%	100.0%	0.0%	50.0%	72.7%
Non-Resident Aliens	--	--	--	--	--
Whites	74.2%	90.9%	73.0%	75.4%	74.0%
Residents	75.4%	90.5%	73.3%	77.2%	73.0%
Nonresidents	0.0%	--	0.0%	--	100.0%
DOVER					
Total # of Freshmen	54	71	52	84	69
% Retention to 2nd Fall	75.9%	80.3%	73.1%	75.0%	85.5%
Males	76.2%	77.8%	69.2%	81.8%	86.7%
Females	75.8%	82.9%	76.9%	70.6%	84.6%
African-Americans	50.0%	66.7%	100.0%	83.3%	81.8%
American Indians	--	--	--	--	--
Asians	--	100.0%	50.0%	100.0%	0.0%
Hispanics	100.0%	100.0%	100.0%	33.3%	100.0%
Non-Resident Aliens	--	--	--	100.0%	--
Whites	76.6%	80.0%	70.5%	73.5%	87.8%
Residents	77.4%	80.3%	74.5%	75.3%	85.5%
Nonresidents	0.0%	--	0.0%	66.7%	--
WILMINGTON					
Total # of Freshmen	191	208	207	238	195
% Retention to 2nd Fall	72.8%	81.2%	72.9%	79.0%	80.5%
Males	75.3%	81.3%	77.7%	79.3%	79.4%
Females	70.6%	81.3%	69.0%	78.7%	81.6%
African-Americans	52.4%	83.3%	71.4%	93.5%	73.7%
American Indians	--	100.0%	0.0%	--	100.0%
Asians	85.7%	100.0%	66.7%	100.0%	90.0%
Hispanics	73.3%	100.0%	54.5%	65.0%	77.8%
Non-Resident Aliens	100.0%	66.7%	100.0%	100.0%	100.0%
Whites	73.4%	78.8%	74.3%	75.3%	80.7%
Residents	72.4%	81.1%	72.6%	79.0%	81.0%
Nonresidents	83.3%	85.7%	83.3%	77.8%	66.7%
TOTAL ASSOCIATE IN ARTS PROGRAM					
Total # of Freshmen	315	342	335	401	354
% Retention to 2nd Fall	73.7%	82.7%	72.8%	77.8%	79.7%
Males	73.0%	80.7%	74.2%	81.8%	78.4%
Females	74.1%	84.7%	71.7%	74.7%	80.7%
African-Americans	53.6%	80.6%	75.0%	93.0%	78.8%
American Indians	--	100.0%	0.0%	--	100.0%
Asians	75.0%	94.7%	71.4%	100.0%	75.0%
Hispanics	77.8%	100.0%	57.1%	59.3%	79.2%
Non-Resident Aliens	100.0%	66.7%	100.0%	100.0%	100.0%
Whites	74.2%	81.6%	73.4%	74.9%	80.1%
Residents	73.9%	82.7%	73.1%	77.9%	79.8%
Nonresidents	62.5%	85.7%	62.5%	75.0%	71.4%

Note: All entering new freshman cohorts adjusted to comply with IPEDS Graduation Rate Survey Definitions.

Source: Office of Institutional Research/UDEW

**GRADUATION RATES FOR
ENTERING FIRST-TIME, FULL-TIME FRESHMEN
BY GENDER, ETHNICITY & RESIDENCY
ASSOCIATE IN ARTS PROGRAM**

ASSOCIATE IN ARTS PROGRAM	2004	2005	2006	2007
GEORGETOWN				
Total Number in Cohort	83	58	70	63
% Graduating with AA within Two Years	9.6	12.1	34.3	47.5
% Graduating with AA within Three Years	18.1	29.3	47.1	75.4
% Graduating with AA within Four Years	20.5	31.0	51.4	77.0
DOVER				
Total Number in Cohort	47	73	54	71
% Graduating with AA within Two Years	40.4	34.2	33.3	43.7
% Graduating with AA within Three Years	46.8	52.1	46.3	60.6
% Graduating with AA within Four Years	48.9	52.1	51.9	62.0
WILMINGTON				
Total Number in Cohort	190	181	191	208
% Graduating with AA within Two Years	21.5	24.5	31.4	18.3
% Graduating with AA within Three Years	49.2	46.7	54.5	56.3
% Graduating with AA within Four Years	50.8	51.6	57.1	60.1
TOTAL ASSOCIATE IN ARTS PROGRAM				
Total Number in Cohort	320	312	315	342
% Graduating with AA within Two Years	21.2	24.4	32.4	28.8
Males	22.2	24.8	25.5	26.7
Females	20.1	24.2	37.9	30.9
African-Americans	14.8	11.8	14.3	19.4
American Indians	33.3	--	--	0.0
Asians	40.0	23.1	37.5	27.8
Hispanics	45.5	30.0	22.2	43.8
Non-Resident Aliens	25.0	0.0	100.0	66.7
Whites	19.7	25.8	32.7	29.2
Residents	21.5	25.1	32.2	28.5
Nonresidents	10.0	8.3	37.5	42.9
% Graduating with AA within Three Years	40.8	44.8	51.4	60.6
Males	46.9	46.0	48.2	59.4
Females	34.6	43.8	54.0	61.7
African-Americans	33.3	47.1	28.6	50.0
American Indians	66.7	--	--	0.0
Asians	50.0	46.2	62.5	83.3
Hispanics	63.6	50.0	55.6	68.8
Non-Resident Aliens	25.0	50.0	100.0	66.7
Whites	40.2	44.0	51.2	60.4
Residents	40.5	44.9	51.5	60.4
Nonresidents	50.0	41.7	50.0	71.4
% Graduating with AA within Four Years	42.7	47.9	54.9	63.5
Males	49.4	50.4	52.5	61.2
Females	35.8	46.1	56.9	65.7
African-Americans	40.7	50.0	35.7	50.0
American Indians	66.7	--	--	0.0
Asians	50.0	69.2	75.0	83.3
Hispanics	63.6	50.0	66.7	68.8
Non-Resident Aliens	50.0	50.0	100.0	66.7
Whites	41.3	46.0	53.2	63.8
Residents	42.1	48.2	55.0	63.4
Nonresidents	60.0	41.7	50.0	71.4

Note: Data comply with IPEDS Graduation Rate Survey Definitions.

Associate in Arts Program graduation rates recalculated to reflect July 1 through June 30.

Source: Office of Institutional Research/UDEW

DEGREES GRANTED BY COLLEGE AND LEVEL

2006-07 Through 2010-11

	2007	2008	2009	2010	2011
UNIVERSITY TOTALS	4,575	4,591	4,742	4,497	4,938
Associate's Degrees	162	188	195	254	252
Bachelor's Degrees	3,416	3,500	3,569	3,361	3,621
Master's Degrees	773	695	727	652	813
Doctorates	224	208	251	230	252
College of Agriculture & Natural Resources					
Associate's Degrees	1	1	2	1	0
Bachelor's Degrees	141	162	153	142	160
Master's Degrees	54	57	48	46	52
Doctorates	3	9	5	1	15
College of Arts & Sciences¹					
Associate's Degrees	160	187	178	244	242
Bachelor's Degrees	1,549	1,586	1,564	1,443	1,533
Master's Degrees	208	194	175	140	208
Doctorates	102	100	127	82	96
Alfred Lerner College of Business & Economics²					
Bachelor's Degrees	598	557	766	729	820
Master's Degrees	196	164	191	172	240
Doctorates	3	2	7	2	10
College of Earth, Ocean, & Environment³					
Bachelor's Degrees	8	8	9	35	33
Master's Degrees	10	10	10	11	11
Doctorates	7	6	18	14	9
College of Education & Human Development					
Associate's Degrees	1	0	15	9	10
Bachelor's Degrees	503	547	410	345	260
Master's Degrees	202	174	183	171	141
Doctorates	43	43	39	43	30
College of Engineering⁴					
Bachelor's Degrees	238	238	231	224	334
Master's Degrees	68	60	63	66	112
Doctorates	65	48	49	52	63
College of Health Sciences					
Bachelor's Degrees	379	402	436	443	481
Master's Degrees	35	36	57	46	49
Doctorates ⁵	1	0	6	36	29

¹ The Fashion and Apparel Studies Department and the School of Public Policy and Administration moved to the College of Arts and Sciences in 2010.

² The Hotel, Restaurant & Institutional Management Department and the Sport Management/Sport Management Interest Program moved to the Alfred Lerner College of Business and Economics in 2008 and 2010, respectively.

³ The Geography Department moved to the College of Earth, Ocean & Environment in 2009.

⁴ The Computer Science Department and the Energy and Environmental Policy Program moved to the College of Engineering in 2010.

⁵ The Physical Therapy Department moved to the College of Health Sciences in 2009.

Note: Graduation terms defined by federal IPEDS standards (July 1 through June 30).

Source: Office of Institutional Research/UDEW

EMPLOYMENT AND EDUCATIONAL STATUS OF BACCALAUREATES BY CURRICULUM GROUP CLASS OF 2010

Curriculum Group	Number in Class ¹	Number Who Received Survey ²		Number of Respondents ³ n	%	Full-Time Employment %	Part-Time Employment %	Pursuing Further Education %	Still Seeking Employment %
Agriculture & Natural Resources	142	142		12	8.5	41.7	8.3	33.3	16.7
Arts & Sciences									
Humanities	378	378		38	10.1	39.5	23.7	28.9	5.3
Social Sciences	787	787		96	12.2	46.9	11.5	33.3	7.3
Life & Health Sciences	150	150		19	12.7	26.3	5.3	57.9	5.3
Physical Sciences	128	128		18	14.1	72.2	--	22.2	5.6
Business & Economics	728	728		264	36.3	81.1	5.7	8.0	1.1
Earth, Ocean, & Environment	35	35		3	8.6	33.3	--	33.3	--
Education & Public Policy	345	345		134	38.8	57.5	12.7	23.9	0.7
Engineering	224	224		131	58.5	59.5	2.3	32.8	1.5
Health Sciences	444	444		203	45.7	43.8	12.3	39.4	0.5
2010 University Total⁴	3,361	3,361		918	27.3	59.0	8.9	26.0	2.2

¹ The number in class is based on expected graduates.

² Beginning with the 2010 Career Plans Survey, postcards were sent for the fall follow-up mailings; non-deliverable postcards were not received.

³ The number of respondents includes only baccalaureate respondents with valid data on Career Plans Survey, question A for the reported responses on this table.

⁴ Twenty-seven (2.9%) of the 918 respondents indicated they are not seeking work. University total includes all curriculum groups.

Note: Percentages may not total to 100.0 because of rounding.

Source: Data obtained through the Bank of America Career Services Center and the Office of Institutional Research Career Plans Survey

EMPLOYEES BY ETHNICITY AND EEO CATEGORY
Fall 2007 Through Fall 2011

EEO-6 CATEGORY		2007	2008	2009	2010	2011
Executive/ Administrative/ Managerial	Full-Time - Total	379	387	393	384	380
	White	346	352	358	350	344
	African-American	23	22	22	21	26
	Hispanic	3	5	5	5	2
	Asian	4	5	4	5	5
	Native American	3	3	3	1	1
	Two or More Races	--	--	--	1	1
	Unknown	0	0	1	1	1
	Part-Time - Total	10	10	11	9	6
	White	10	10	11	8	6
	African-American	0	0	0	0	0
	Hispanic	0	0	0	0	0
	Asian	0	0	0	1	0
	Native American	0	0	0	0	0
	Two or More Races	--	--	--	0	0
	Unknown	0	0	0	0	0
Faculty	Full-Time - Total	1,117	1,117	1,111	1,126	1,131
	White	934	936	915	921	912
	African-American	49	53	54	48	51
	Hispanic	30	27	30	29	28
	Asian	101	98	108	118	127
	Native American	3	3	3	4	4
	Two or More Races	--	--	--	2	6
	Unknown	0	0	1	4	3
	Part-Time - Total	32	36	44	41	41
	White	23	26	31	26	27
	African-American	4	3	3	3	3
	Hispanic	0	2	4	5	5
	Asian	5	5	6	7	6
	Native American	0	0	0	0	0
	Two or More Races	--	--	--	0	0
	Unknown	0	0	0	0	0
Professional	Full-Time - Total	971	967	1,010	1,085	1,163
	White	786	782	805	855	936
	African-American	88	96	93	97	99
	Hispanic	17	20	24	30	20
	Asian	76	65	80	85	91
	Native American	4	4	7	7	7
	Two or More Races	--	--	--	1	6
	Unknown	0	0	1	10	4
	Part-Time - Total	94	88	93	101	92
	White	80	73	77	88	78
	African-American	7	5	6	4	6
	Hispanic	1	1	1	0	1
	Asian	6	9	9	8	7
	Native American	0	0	0	0	0
	Two or More Races	--	--	--	0	0
	Unknown	0	0	0	1	0

EMPLOYEES BY ETHNICITY AND EEO CATEGORY (Continued)

EEO-6 CATEGORY		2007	2008	2009	2010	2011
Secretarial/ Clerical	Full-Time - Total	610	618	607	589	560
	White	538	545	537	515	484
	African-American	55	57	53	54	53
	Hispanic	7	6	6	7	8
	Asian	6	6	6	6	8
	Native American	4	4	4	2	2
	Two or More Races	--	--	--	2	2
	Unknown	0	0	1	3	3
	Part-Time - Total	63	63	51	54	48
	White	58	58	47	48	42
	African-American	5	4	4	4	4
	Hispanic	0	1	0	2	2
	Asian	0	0	0	0	0
	Native American	0	0	0	0	0
	Two or More Races	--	--	--	0	0
	Unknown	0	0	0	0	0
Technical/ Paraprofessional	Full-Time - Total	127	128	136	133	138
	White	103	104	109	107	112
	African-American	15	14	16	15	16
	Hispanic	2	2	2	1	1
	Asian	4	5	6	7	5
	Native American	3	3	3	3	3
	Two or More Races	--	--	--	0	0
	Unknown	0	0	0	0	1
	Part-Time - Total	11	20	20	22	20
	White	6	14	15	16	17
	African-American	3	4	3	4	2
	Hispanic	0	0	0	0	0
	Asian	2	2	2	2	1
	Native American	0	0	0	0	0
	Two or More Races	--	--	--	0	0
	Unknown	0	0	0	0	0
Skilled Craft	Full-Time - Total	145	146	146	145	140
	White	124	123	122	124	119
	African-American	13	14	15	14	14
	Hispanic	5	6	6	5	5
	Asian	1	1	1	0	0
	Native American	2	2	2	2	2
	Two or More Races	--	--	--	0	0
	Unknown	0	0	0	0	0
	Part-Time - Total	0	0	0	0	0
	White	0	0	0	0	0
	African-American	0	0	0	0	0
	Hispanic	0	0	0	0	0
	Asian	0	0	0	0	0
	Native American	0	0	0	0	0
	Two or More Races	--	--	--	0	0
	Unknown	0	0	0	0	0

EMPLOYEES BY ETHNICITY AND EEO CATEGORY (Continued)

EEO-6 CATEGORY		2007	2008	2009	2010	2011
Service/ Maintenance	Full-Time - Total	435	445	443	436	429
	White	251	258	257	255	255
	African-American	135	132	133	130	121
	Hispanic	28	29	27	26	25
	Asian	15	20	20	20	22
	Native American	6	6	6	5	5
	Two or More Races	--	--	--	0	1
	Unknown	0	0	0	0	0
	Part-Time - Total	10	11	10	9	8
	White	10	11	9	7	6
	African-American	0	0	0	0	0
	Hispanic	0	0	0	1	1
	Asian	0	0	0	0	0
	Native American	0	0	0	0	0
	Two or More Races	--	--	--	0	0
	Unknown	0	0	1	1	1
ALL EMPLOYEES	Full-Time - Total	3,784	3,808	3,846	3,898	3,941
	White	3,082	3,100	3,103	3,127	3,162
	African-American	378	388	386	379	380
	Hispanic	92	95	100	103	89
	Asian	207	200	225	241	258
	Native American	25	25	28	24	24
	Two or More Races	--	--	--	6	16
	Unknown	0	0	4	18	12
	Part-Time - Total	220	228	229	236	215
	White	187	192	190	193	176
	African-American	19	16	16	15	15
	Hispanic	1	4	5	8	9
	Asian	13	16	17	18	14
	Native American	0	0	0	0	0
	Two or More Races	--	--	--	0	0
	Unknown	0	0	1	2	1
TOTAL		4,004	4,036	4,075	4,134	4,156

NOTE: In Fall 2010 a new ethnic reporting category "Two or More Races" was introduced due to a change in Federal reporting requirements.

Source: Office of Institutional Research/UDEW

FULL-TIME EMPLOYEES BY GENDER

Fall 2007 Through Fall 2011

	2007	2008	2009	2010	2011
Faculty	1,117	1,117	1,111	1,126	1,131
Male	681	686	674	688	682
Female	436	431	437	438	449
Professionals (Includes Chairpersons)	1,350	1,354	1,403	1,469	1,543
Male	646	637	651	666	679
Female	704	717	752	803	864
Salaried Staff/Hourly	1,317	1,337	1,332	1,303	1,267
Male	497	493	498	500	495
Female	820	844	834	803	772
TOTAL	3,784	3,808	3,846	3,898	3,941
Male	1,824	1,816	1,823	1,854	1,856
Female	1,960	1,992	2,023	2,044	2,085

Source: Office of Institutional Research/UDEW

NUMBER OF FACULTY BY RANK AND TENURE STATUS

Fall 2007 Through Fall 2011

	2007			2008			2009			2010			2011		
	Tenured/ Tenure Track	Non-Tenure Track	Total	Tenured/ Tenure Track	Non-Tenure Track	Total	Tenured/ Tenure Track	Non-Tenure Track	Total	Tenured/ Tenure Track	Non-Tenure Track	Total	Tenured/ Tenure Track	Non-Tenure Track	Total
Full-Time															
Professor	367	11	378	370	12	382	368	11	379	367	12	379	386	9	395
Associate Professor	297	25	322	301	27	328	310	32	342	312	38	350	293	41	334
Assistant Professor	186	112	298	180	122	302	162	124	286	162	128	290	179	121	300
Instructor	0	118	118	0	105	105	0	104	104	0	107	107	0	102	102
Lecturer	0	1	1	0	0	0	0	0	0	0	0	0	0	0	0
Total Full-Time Faculty	850	267	1,117	851	266	1,117	840	271	1,111	841	285	1,126	858	273	1,131
Total Part-Time Faculty	4	28	32	6	30	36	3	41	44	4	37	41	2	39	41
Grand Total	854	295	1,149	857	296	1,153	843	312	1,155	845	322	1,167	860	312	1,172

Note: Data include regular faculty (active or on sabbatical leave) at the Newark Campus and the Associate in Arts Program. Visiting faculty are excluded.

Source: Office of Institutional Research/UDEW

TENURE STATUS AMONG FULL-TIME TENURE TRACK FACULTY

Fall 2007 Through Fall 2011

	2007	2008	2009	2010	2011
	Tenured/ Eligible	Tenured/ Eligible	Tenured/ Eligible	Tenured/ Eligible	Tenured/ Eligible
	% Tenured	% Tenured	% Tenured	% Tenured	% Tenured
Professor	367/367	370/370	368/368	367/367	386/386
	100.0	100.0	100.0	100.0	100.0
Associate Professor	293/297	298/301	308/310	307/312	286/293
	98.7	99.0	99.4	98.4	97.6
Assistant Professor	0/186	0/180	0/162	0/162	0/179
	0.0	0.0	0.0	0.0	0.0
Total	660/850	668/851	676/840	674/841	672/858
	77.6	78.5	80.5	80.1	78.3

Key: % Tenured = # Tenured/# Eligible * 100. University policy is to grant tenure at time of promotion to Associate Professor.

If promotion is not achieved, faculty member is terminated, so there are no tenured faculty at the Assistant Professor level.

Note: Counts include regular faculty (active or on sabbatical leave) on the Newark campus and the Associate in Arts Program. Visiting faculty are excluded.

Source: Office of Institutional Research/UDEW

AVERAGE TOTAL COMPENSATION OF FULL-TIME FACULTY BY RANK

Academic Year 2007-08 Through 2011-12

	2007-08	2008-09	2009-10	2010-11	2011-12
	Average Comp. \$	Average Comp. \$	Average Comp. \$	Average Comp. \$	Average Comp. \$
	% Increase From Previous Year	% Increase From Previous Year	% Increase From Previous Year	% Increase From Previous Year	% Increase From Previous Year
Professor	160,932	165,800	171,414	175,694	180,935
Associate Professor	112,828	116,423	120,879	122,973	127,339
Assistant Professor	93,262	99,072	101,362	104,904	109,501
Instructor	76,568	80,266	83,774	85,992	90,956

Note: Includes regular full-time faculty and chairpersons.

Total compensation refers to 9-month equivalent salary plus fringe benefits.

Source: Office of Institutional Research/AAUP Annual Survey of Faculty Compensation

**FULL-TIME EMPLOYEES' SALARY
PRINCIPAL SOURCE OF FUNDING**
Fall 2007 Through Fall 2011

	2007	2008	2009	2010	2011
Faculty	1,117	1,117	1,111	1,126	1,131
Paid Principally from Unrestricted Funds	1,067	1,062	1,061	1,075	1,114
% of Total	95.5%	95.1%	95.5%	95.5%	98.5%
Professionals (Includes Chairpersons)	1,350	1,354	1,403	1,469	1,543
Paid Principally from Unrestricted Funds	1,166	1,196	1,218	1,279	1,320
% of Total	86.4%	88.3%	86.8%	87.1%	85.5%
Salaried Staff/Hourly	1,317	1,337	1,332	1,303	1,267
Paid Principally from Unrestricted Funds	1,226	1,254	1,264	1,232	1,185
% of Total	93.1%	93.8%	94.9%	94.5%	93.5%
TOTAL	3,784	3,808	3,846	3,898	3,941
Paid Principally from Unrestricted Funds	3,459	3,512	3,543	3,586	3,619
% of Total	91.4%	92.2%	92.1%	92.0%	91.8%

Note: Unrestricted funds represent basic, allocated, and self supporting fund types.

Source: Office of Institutional Research/UDEW

STATEMENT OF OPERATING ACTIVITIES
FY 07 Through FY 11
(Thousands of Dollars)

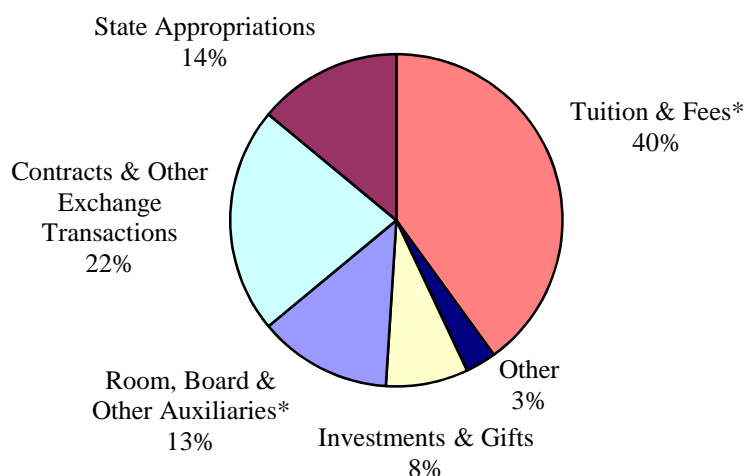
	FY 07	FY 08	FY 09	FY 10	FY 11
	\$	\$	\$	\$	\$
OPERATING REVENUE:					
Tuition and fees, net of scholarship & fellowship allowance ⁽¹⁾	219,900	235,398	260,897	296,648	322,634
State operating appropriations	122,828	127,166	126,744	117,873	116,152
Contracts & other exchange transactions	129,586	136,432	135,371	165,951	175,151
Room, board & other auxiliaries, net of scholarship & fellowship allowance ⁽¹⁾	81,818	88,072	92,929	99,519	101,902
Investments and gifts	78,031	83,526	84,333	73,020	69,052
Other	21,888	21,792	28,207	25,390	25,196
Total operating revenues and support	654,051	692,386	728,481	778,401	810,087
<i>⁽¹⁾ Scholarship and fellowship allowance</i>					
	61,839	67,896	71,976	88,405	98,379
OPERATING EXPENSES AND TRANSFERS:					
Instruction & academic support	334,193	350,736	364,465	373,902	400,701
Sponsored activities	143,917	150,691	154,677	166,845	173,712
Student services	22,202	24,392	26,251	27,494	28,002
Student aid	6,144	5,722	5,827	4,805	5,475
Institutional	57,985	60,451	63,946	69,465	74,205
Room, board & other auxiliaries	76,209	82,999	86,938	94,955	93,981
Transfers & other	13,401	17,395	26,377	40,935	34,011
Total operating expenses and transfers	654,051	692,386	728,481	778,401	810,087

Source: Assistant Vice President, University Finance

OPERATING REVENUE, EXPENSES AND TRANSFERS

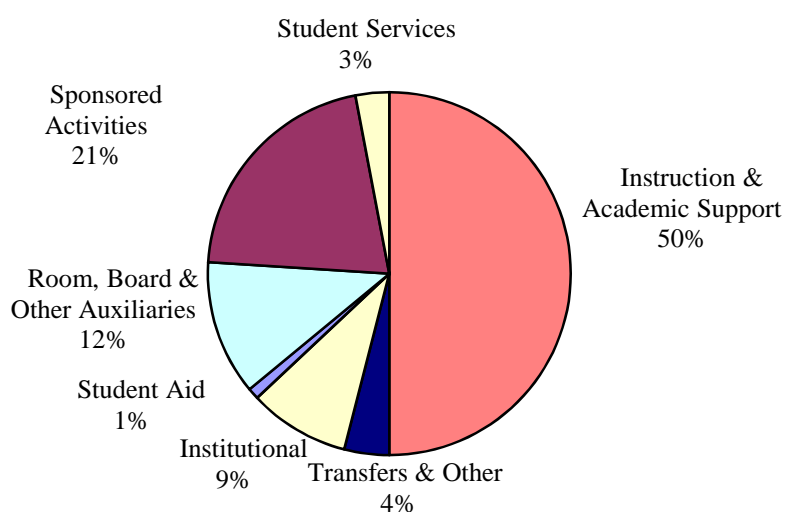
Fiscal Year 2011

REVENUE (\$810.1 millions)



* Net of Scholarship & Fellowship Allowance

EXPENSES AND TRANSFERS (\$810.1 millions)



Source: Assistant Vice President, University Finance

CHANGE IN NET ASSETS
FY 07 Through FY 11
(Thousands of Dollars)

	FY 07	FY 08	FY 09	FY 10	FY 11
	\$	\$	\$	\$	\$
Net assets at beginning of year	1,830,179	2,000,209	1,934,074	1,614,737	1,719,640
Change in net assets:					
Operating transfers	14,414	18,797	27,601	41,565	32,828
Nonoperating activities:					
Net realized and unrealized gains (losses)	174,134	(89,844)	(328,939)	73,311	234,772
Contributions for endowment and buildings	14,434	8,985	8,308	22,107	19,420
State capital appropriations	4,600	3,500	-	900	1,066
Net change in asset retirement obligation liability	(3,093)	(2,972)	(1,256)	606	6,226
Effect of change in adoption of SFAS No. 158	(30,398)	-	-	-	-
Net endowment income and other	(4,061)	(4,601)	(25,051)	(33,586)	(10,970)
Total nonoperating activities	<u>155,616</u>	<u>(84,932)</u>	<u>(346,938)</u>	<u>63,338</u>	<u>250,514</u>
Net assets at end of year	<u>2,000,209</u>	<u>1,934,074</u>	<u>1,614,737</u>	<u>1,719,640</u>	<u>2,002,982</u>
Percent change from prior year	9%	-3%	-17%	6%	16%
Net assets:					
Unrestricted	1,541,474	1,031,166	910,676	958,025	1,117,093
Temporarily restricted	152,997	593,322	410,205	454,692	566,294
Permanently restricted	<u>305,738</u>	<u>309,586</u>	<u>293,856</u>	<u>306,923</u>	<u>319,595</u>
Total net assets	<u>2,000,209</u>	<u>1,934,074</u>	<u>1,614,737</u>	<u>1,719,640</u>	<u>2,002,982</u>
Endowment and funds invested as endowment:					
Market value	1,397,500	1,340,100	1,008,400	1,091,700	1,138,200
Percent change from prior year	14%	-4%	-25%	8%	4%

Source: Assistant Vice President, University Finance

EXTERNALLY SPONSORED ACTIVITIES (Thousands of Dollars)

College / Unit	FY 2011				FY 2010 Total \$	Percent Change %
	Instruction & Dept. Rsch. \$	Sponsored Research \$	Public Service \$	Total \$		
EXTERNALLY SPONSORED ACTIVITIES:						
Agriculture & Natural Resources	2,214	13,113	7,544	22,871	23,054	(0.8)
Arts & Sciences	9,436	32,294	4,750	46,480	40,712	14.2
Business & Economics	3,707	905	1,165	5,777	5,521	4.6
Earth, Ocean, & Environment	577	15,045	771	16,393	15,288	7.2
Education & Human Development	7,108	5,015	10,131	22,254	25,089	(11.3)
Engineering	5,684	49,145	839	55,668	47,625	16.9
Health Sciences	1,452	6,908	410	8,770	6,815	28.7
Institute for Global Studies	308	171	644	1,123	1,217	(7.7)
Delaware Biotechnology Institute	630	6,393	43	7,066	7,866	(10.2)
Institute of Energy Conversion	69	2,955	0	3,024	2,719	11.2
Delaware Environmental Institute	0	883	325	1,208	789	53.1
Other	3,752	1,536	449	5,737	4,423	29.7
TOTAL EXTERNALLY SPONSORED ACTIVITIES	34,937	134,363	27,071	196,371	181,118	8.4

Source: Assistant Vice President, University Finance

**UNDERGRADUATE TUITION, FEES,
ROOM AND BOARD CHARGES PER YEAR
AND THEIR ANNUAL RATE OF INCREASE
2001-02 Through 2011-12**

Year	TUITION AND FEES ¹				BOARD ²		TRADITIONAL DOUBLE ROOM	
	Resident		Nonresident		\$	% Incr.	\$	% Incr.
	\$	% Incr.	\$	% Incr.				
01-02	5,290	5.7	14,380	4.6	2,470	3.3	3,064	4.9
02-03 ³	5,760	8.9	15,290	6.3	2,590	4.9	3,232	5.5
03-04	6,498	12.8	16,028	4.8	2,690	3.9	3,428	6.1
04-05	6,954	7.0	16,640	3.8	2,790	3.7	3,668	7.0
05-06	7,318	5.2	17,474	5.0	2,900	3.9	3,924	7.0
06-07	7,740	5.8	18,450	5.6	3,030	4.5	4,336	10.5
07-08	8,150	5.3	19,400	5.1	3,200	5.6	4,748	9.5
08-09	8,646	6.1	21,126	8.9	3,350	4.7	5,128	8.0
09-10	9,486	9.7	23,186	9.8	3,600	7.5	5,466	6.6
10-11	10,208	7.6	25,408	9.6	3,810	5.8	5,826	6.6
11-12	11,192	9.6	27,462	8.1	4,020	5.5	6,176	6.0

¹ Fall 2011 fees include: Student Health - \$494; Student Union - \$238; and Comprehensive Fee - \$790.

² The board charge reflects the largest number of meals available (19 per week).

³ 2002-03 tuition includes a \$120 mid-year increase for the Spring semester.

Source: Office of Institutional Research

UNDERGRADUATE STUDENT CHARGES AT THE UNIVERSITY OF DELAWARE AND ADMISSIONS COMPETITORS

	TUITION & FEES									
	Resident					Nonresident				
	07-08	08-09	09-10	10-11	11-12	07-08	08-09	09-10	10-11	11-12
Univ. of Delaware	8,150	8,646	9,486	10,208	11,192	19,400	21,126	23,186	25,408	27,462
James Madison Univ.	6,666	6,964	7,244	7,860	8,448	17,386	18,458	19,016	20,114	21,228
Penn State Univ.	12,844	13,706	14,416	15,250	15,984	23,712	24,940	25,946	27,114	28,066
Rutgers Univ.	10,686	11,540	11,886	12,581	12,755	19,854	21,488	22,518	24,043	25,417
Univ. of Maryland	7,969	8,005	8,053	8,416	8,655	22,208	23,076	23,989	24,831	26,026
Univ. of Virginia	8,690	9,490	9,862	10,828	11,786	27,705	29,572	31,420	33,102	36,108
Va. Polytech. Inst.	7,397	8,198	8,605	9,459	10,509	19,605	20,655	21,488	22,648	23,911

	ROOM & BOARD									
	Resident					Nonresident				
	07-08	08-09	09-10	10-11	11-12	07-08	08-09	09-10	10-11	11-12
Univ. of Delaware	7,948	8,478	9,066	9,636	10,196	7,948	8,478	9,066	9,636	10,196
James Madison Univ.	7,108	7,458	7,690	8,020	8,340	7,108	7,458	7,690	8,020	8,340
Penn State Univ.	7,750	8,270	8,790	9,030	9,420	7,750	8,270	8,790	9,030	9,420
Rutgers Univ.	9,762	10,232	10,676	11,216	11,262	9,762	10,232	10,676	11,216	11,262
Univ. of Maryland	8,854	9,109	9,377	9,599	9,742	8,854	9,109	9,377	9,599	9,742
Univ. of Virginia	7,435	7,820	8,290	8,652	8,866	7,435	7,820	8,290	8,652	8,866
Va. Polytech. Inst.	5,106	5,476	5,824	6,290	6,856	5,106	5,476	5,824	6,290	6,856

	TOTAL INSTITUTIONAL COSTS									
	Resident					Nonresident				
	07-08	08-09	09-10	10-11	11-12	07-08	08-09	09-10	10-11	11-12
Univ. of Delaware	16,098	17,124	18,552	19,844	21,388	27,348	29,604	32,252	35,044	37,658
James Madison Univ.	13,774	14,422	14,934	15,880	16,788	24,494	25,916	26,706	28,134	29,568
Penn State Univ.	20,594	21,976	23,206	24,280	25,404	31,462	33,210	34,736	36,144	37,486
Rutgers Univ.	20,448	21,772	22,562	23,797	24,017	29,616	31,720	33,194	35,259	36,679
Univ. of Maryland	16,823	17,114	17,430	18,015	18,397	31,062	32,185	33,366	34,430	35,768
Univ. of Virginia	16,125	17,310	18,152	19,480	20,652	35,140	37,392	39,710	41,754	44,974
Va. Polytech. Inst.	12,503	13,674	14,429	15,749	17,365	24,711	26,131	27,312	28,938	30,767

Source: Data obtained through the Office of Institutional Research Survey of Undergraduate Charges

BUILDING INVENTORY

	Newark	All Sites
Academic		
Major Classrooms & Laboratories	48	54
Farm/Auxiliary	87	131
Other Special Use	33	40
Physical Education	7	7
Total Academic	175	232
Student Residence and Service		
Residence Halls (Major Residence Hall complexes = 11)	40	44
Other Housing	65	95
Dining Halls	5	5
Student Activities	18	18
Total Student Residence & Service	128	162
Administrative		
General Services	20	23
Plant Operations & Services	20	23
Total Administrative	40	46
TOTAL BUILDINGS	343	440

Source: General Accounting
(Data as of September 1, 2011)

LAND INVENTORY

ACREAGE OWNED	
New Castle County	
Newark Campus Total	969
Wilmington	34
Other	139
Total New Castle County¹	1,142
Kent County	
Dover	5
Clayton	297
Total Kent County	302
Sussex County	
Georgetown Substation	347
Rehoboth	141
Lewes	69
Indian River	10
Total Sussex County	567
Lake Harmony, PA	
Lot 25, Wolf Hollow	1
Total Lake Harmony, PA	1
TOTAL ACREAGE¹	2,012

¹ Exclusive of the 272 acres owned by 1743 Holdings, LLC for the former Chrysler Site.

Source: General Accounting
(Data as of September 1, 2011)

UNIVERSITY LIBRARY

Facilities and Services

The University of Delaware Library includes the Morris Library, where the main collection is housed, three branch libraries located in Newark, the Agriculture Library, the Chemistry Library, and the Physics Library and a fourth branch library, the Marine Studies Library in Lewes, Delaware.

The collections of the Library parallel the University's academic interests and support all disciplines. Books, periodicals, eBooks, eJournals, databases, microforms, government publications, maps, manuscripts, media, software and Internet access provide a major academic resource for the University of Delaware, the surrounding community, the State of Delaware and the nation.

The Library is a depository library for U.S. government publications, a patent depository for U.S. patents and a repository for State of Delaware publications. Library staff members provide a wide range of services including reference assistance, circulation, interlibrary loan, instructional programs, assistance to users with disabilities and assistance to faculty, staff and students in the Student Multimedia Design Center.

The Morris Library, the main library where the main collection is housed, seats over 2,500 persons. The Library is a member of the Association of Research Libraries, the Center for Research Libraries, CIRLA (the Chesapeake Information and Research Library Alliance), and LYRASIS through which it is connected online to OCLC, the Online Computer Library Center.

For Library hours, call 302-831-BOOK or check the Library Website at:
www.udel.edu/library

Size of Collections (2010/2011)

Books and bound periodicals.....	over 2,800,000
Microforms.....	over 3,400,000
Databases (titles in Databases list).....	over 310
Electronic and print journals including newspapers to which the Library provides access.....	over 42,000
Other resources (DVDs, maps, etc.).....	over 510,000
Linear feet of manuscripts and archives.....	over 6,700
Subject guides to Internet resources.....	over 150

Use Statistics (2010/2011)

Items loaned.....	over 360,000
Items used on site.....	over 88,000
Individuals entering the Morris Library.....	over 850,000
Virtual visits on Library Website.....	over 1,700,000
Page Views on Library Website.....	over 4,700,000
Individuals who received user education.....	over 7,800

Electronic Library Resources

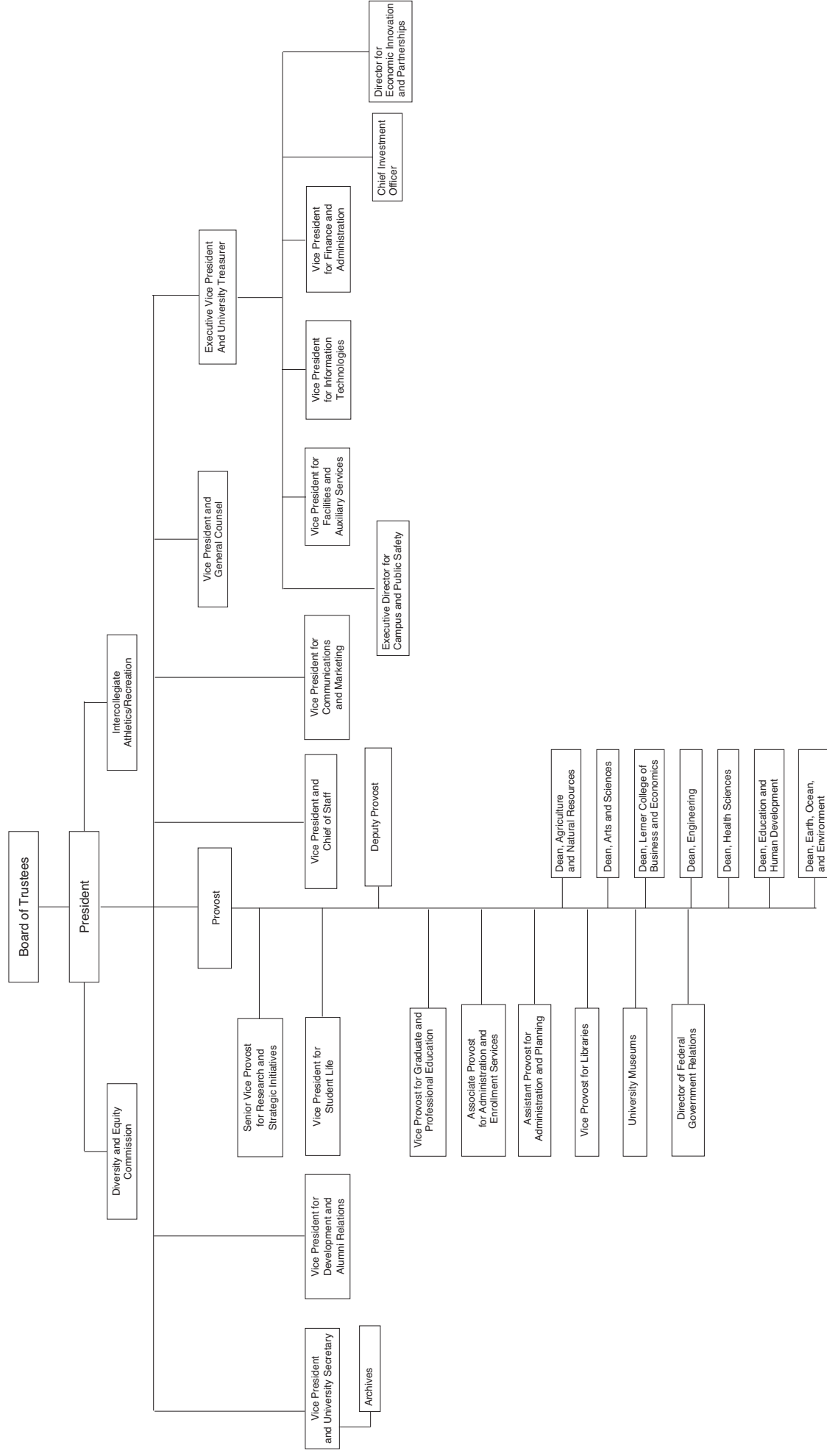
The University of Delaware Library provides online electronic access to networked and digital information including: journal article references and abstracts; full-text electronic articles; a full-text encyclopedia; government information; thousands of electronic journals; maps and many other items. Databases provide access to more than 310 networked databases for University of Delaware faculty, students, and staff. The Library Website is accessible at www.udel.edu/library.

DELCAT is the University of Delaware Library online catalog and contains information about the library collection and also provides links to electronic journals and other resources. DELCAT may be accessed from anywhere in the world via the web.

The Library Website serves as a gateway research tool and provides gateway access to electronic resources on the web including electronic access to resources that are locally licensed for University of Delaware faculty, students and staff only. The Library Website is also available from the University of Delaware Website www.udel.edu.

The University of Delaware Library was one of the first libraries in the nation to implement WorldCat Local, the world's largest network of library-based content and services. WorldCat Local encompasses the holdings of over 10,000 libraries across the world, including the University of Delaware Library. In a single search, users can easily identify a broad array of high-quality research materials. With a simple click, users can change the default interface to German, Spanish, French, Dutch or Chinese. WorldCat Local was enthusiastically received by students.

The Morris Library provides seating for more than 2,500 persons; wireless access in most areas; special purpose space for computer-based systems; more than 275 computer workstations accessible to users; more than 200 laptop connections for University of Delaware users to connect personal laptops (including all graduate student carrels); the Student Multimedia Design Center; a current periodical reading room; self-service photocopiers; microform reader/printers including a digital microform workstation; a large reserve reading room; small research studies for which faculty may request use; a GIS workstation; special equipment and areas to assist users with disabilities; a media area and viewing room; small group study rooms for student use; a handsome Special Collections area including an exhibition gallery and a reading room with a controlled environmental system for rare materials; and many other areas and services.



UNIVERSITY OF DELAWARE REGIONAL, NATIONAL AND SPECIALIZED ACCREDITORS

Accreditation Board for Engineering and Technology
Accreditation Association for Ambulatory Health Care, Inc.
Administration on Developmental Disabilities
American Association of Health Education
American Association of School Librarians
American Chemical Society's Committee on Professional Training
American Council on the Teaching of Foreign Languages
American Library Association
American Physical Therapy Association
American Psychological Association
Association for Childhood Education International
Association for Educational Communications and Technology
Association of Small Business Development Centers
Association of University Centers on Disabilities
Association to Advance Collegiate Schools of Business International
Commission on Accreditation of Physical Therapy Education
Commission on Collegiate Nursing Education
Commission on English Language Program Accreditation
Commission on the Accreditation of Athletic Training Education Programs
Commission on the Accreditation for Dietetics Education (CADE)
Council for Exceptional Children

Council for Standards for Human Services Education
Educational Leadership Constituent Council
Engineering Accreditation Commission of Accreditation Board for Engineering and Technology
Institute of Food Technologists
International Association of Counseling Services, Inc.
International Reading Association
Middle States Commission on Higher Education
National Accrediting Agency for Clinical Laboratory Sciences
National Association for Sport and Physical Education
National Association for the Education of Young Children
National Association of School Psychologists
National Association of Schools of Music
National Association of Schools of Public Affairs and Administration
National Council for Accreditation of Teacher Education
National Council for the Social Studies
National Council of Teachers of English
National Council of Teachers of Mathematics
National Science Teachers Association
Psychological Clinical Science Accreditation System (PCSAS)
Teachers of English to Speakers of Other Languages, Inc.
Technology Accreditation Commission of Accreditation Board for Engineering and Technology

Notice of Non-Discrimination, Equal Opportunity and Affirmative Action

The University of Delaware does not discriminate on the basis of race, color, national origin, sex, disability, religion, age, veteran status, gender identity or expression, or sexual orientation in its programs and activities as required by Title IX of the Educational Amendments of 1972, the Americans with Disabilities Act of 1990, Section 504 of the Rehabilitation Act of 1973, Title VII of the Civil Rights Act of 1964, and other applicable statutes and University policies. The University of Delaware prohibits sexual harassment, including sexual violence. The following person has been designated to handle inquiries regarding the Americans with Disabilities Act, the Rehabilitation Act, and related statutes and regulations: Tom Webb, Director, Office of Disabilities Support Services, 240 Academy Street, Alison Hall Suite 119, University of Delaware, Newark, DE 19716, 302-831-4643. The following person has been designated to handle inquiries regarding the non-discrimination policies and to serve as the overall campus coordinator for purposes of Title IX compliance: Bindu Kolli, Chief Policy Advisor, Office of Equity and Inclusion, 305 Hulliher Hall, University of Delaware, Newark, DE 19716, 302-831-8063. The following individuals have been designated as deputy Title IX coordinators: for Athletics, Jennifer W. Davis, Vice President for Finance and Administration, 220 Hulliher Hall, University of Delaware, Newark, DE 19716, 302-831-2769; and for Student Life, Dawn Thompson, Dean of Students/AVP for Student Life, 101 Hulliher Hall, University of Delaware, Newark, DE 19716, 302-831-8939. Inquiries concerning the application of anti-discrimination laws may be referred to the Title IX coordinators or to the Office for Civil Rights, United States Department of Education. For further information on notice of nondiscrimination, visit <http://wdcrobcolp01.ed.gov/CFAPPS/OCR/contactus.cfm> for the address and phone number of the U.S. Department of Education office that serves your area, or call 1-800-421-3481.