



## ***FACTS & FIGURES***

***2008 – 2009***

### **Office of Institutional Research and Planning**

**Michael F. Middaugh**

*Assistant Vice President*

[middaugh@udel.edu](mailto:middaugh@udel.edu)

**Heather A. Kelly**

*Associate Director*

[hkelly@udel.edu](mailto:hkelly@udel.edu)

**Allison M. Walters**

*Assistant Director*

[awalters@udel.edu](mailto:awalters@udel.edu)

**Kathleen F. Collison**

*Data Warehouse Manager*

[katc@udel.edu](mailto:katc@udel.edu)

**Denise M. Lindsey**

*Institutional Research Analyst*

[dlindsey@udel.edu](mailto:dlindsey@udel.edu)

**Margaret F. Roldan**

*Institutional Research Analyst*

[mfroldan@udel.edu](mailto:mfroldan@udel.edu)

**Lynne R. Foote**

*Institutional Research Analyst*

[lfoote@udel.edu](mailto:lfoote@udel.edu)

**Qin Zhang**

*Institutional Research Analyst*

[qzhang@udel.edu](mailto:qzhang@udel.edu)

**Margaret J. Brumit**

*Records Analyst/Coordinator*

[mbrumit@udel.edu](mailto:mbrumit@udel.edu)

**Patricia E. Kelly**

*Records Technician*

[pek@udel.edu](mailto:pek@udel.edu)

**Telephone: (302) 831-2021      Fax: (302) 831-8530**

**E-mail: [irp@udel.edu](mailto:irp@udel.edu)**

**UD Homepage on the Internet: <http://www.udel.edu/>**

**Institutional Research Homepage on the Internet: <http://www.udel.edu/IR/>**

# MEMBERS OF THE BOARD OF TRUSTEES

## *As of September 2008*

### **Ex-Officio Members**

Ruth Ann Minner, *Governor of the State of Delaware*  
Jean W. Allen, *President of the State Board of Education*  
William H. Narvel, Jr., *Master of the State Grange*  
Patrick T. Harker, *President of the University*

### **Officers of the Board**

Howard E. Cosgrove, *Chairman*  
Robert A. Fischer, Jr., *Vice Chairman*  
A. Gilchrist Sparks III, *Vice Chairman*  
Carey M. Koppenhaver, *Secretary-Treasurer*

### **Elected and Appointed Members**

James C. Borel	Joan Thompson Mobley
Thomas J. Burns	Courtney L. Moore
Irwin G. Burton III	James P. Neal
R.R.M. Carpenter III	Christopher H. Schell
John R. Cochran	A. Gilchrist Sparks III
Richard S. Cordrey	Everett C. Toomey
Patricia A. DeLeon	H. Wesley Towers Jr.
Robert W. Gore	P. Coleman Townsend Jr.
T. Henley Graves	Sherman L. Townsend
Scott A. Green	John E. Wallace, Jr.
Dennis E. Klima	Kenneth C. Whitney
Carey M. Koppenhaver	Mary Jane Willis
Cynthia Primo Martin	

### **Honorary Counselor**

Andrew B. Kirkpatrick, Jr.

### **Trustees *Emeriti***

Werner C. Brown  
Sally H. Higgins  
Robert F. Rider

# **ADMINISTRATIVE LEADERS**

PATRICK T. HARKER, President

DANIEL RICH, Provost

SCOTT R. DOUGLASS, Executive Vice President and University Treasurer

DAVID L. BROND, Vice President for Communications and Marketing

JENNIFER W. DAVIS, Vice President for Administration

MICHAEL A. GILBERT, Vice President for Student Life

PIERRE D. HAYWARD, Vice President and University Secretary

CARL JACOBSON, Interim Vice President for Information Technologies

ROBERT M. SPECTER, Vice President for Finance

MONICA M. TAYLOR, Vice President for Development and Alumni Relations

PATRICIA PLUMMER WILSON, Vice President and Chief of Staff

# 2008-09 FACTS & FIGURES

## Table of Contents

	<u>Page No.</u>
<b>Mission and Vision</b> .....	1
<b>At A Glance</b> .....	3
<b>Synopsis of Undergraduate Degree Programs and Majors</b> .....	5
<b>Synopsis of Graduate Degree Programs</b> .....	7
<b>Twenty-Five Most Popular Undergraduate Majors</b> .....	9
<b>Students</b>	
Average SAT Scores By Residence for First-Time Freshmen .....	10
First-Time Freshman Admissions Activity .....	11
Distribution of Completed Admissions Applications and Accepted Offers .....	12
- Completed Applications and Offers Accepted (figure) .....	12
Enrollment By College or Division and Time Status .....	13
- Trends in Total Enrollment (figure) .....	16
Ethnicity of Students By Time Status .....	17
Undergraduate Enrollment By Gender .....	19
Graduate Enrollment By Gender .....	20
Enrollment By Residence Status .....	21
Retention Rates .....	23
Graduation Rates .....	24
Degrees Granted By College and Level .....	25
Employment and Educational Status of Baccalaureates .....	26
<b>Personnel</b>	
Employees By Ethnicity and EEO Category .....	27
Full-Time Employees By Gender .....	30
Number of Faculty By Rank and Tenure Status .....	31
Tenure Status Among Full-Time Tenure Track Faculty .....	32
Average Total Compensation of Full-Time Faculty .....	33
Full-Time Employees' Salary Principal Source of Funding .....	34

# Table of Contents, continued

	<u>Page No.</u>
<b>Finances</b>	
Statement of Operating Activities.....	35
Operating Revenue, Expenses and Transfers (figure) .....	36
Change in Net Assets .....	37
Externally Sponsored Activities .....	38
Tuition, Fees, Room and Board Charges .....	39
Student Charges at Delaware and Admissions Competitors.....	40
<b>Facilities</b>	
Building Inventory .....	41
Land Inventory .....	42
University Library.....	43
<b>University of Delaware Administrative Organizational Chart</b>	
<b>University of Delaware Regional, National and Specialized Accreditors</b>	





## **MISSION AND VISION**

### **MISSION STATEMENT**

The University of Delaware exists to cultivate learning, develop knowledge, and foster the free exchange of ideas. State-assisted yet privately governed, the University has a strong tradition of distinguished scholarship, research, teaching, and service that is grounded in a commitment to increasing and disseminating scientific, humanistic, and social knowledge for the benefit of the larger society. Founded in 1743 and chartered by the state in 1833, the University of Delaware today is a land-grant, sea-grant, space-grant, and urban-grant university.

The University of Delaware is a major research university with extensive graduate programs that is also dedicated to outstanding undergraduate and professional education. University faculty are committed to the intellectual, cultural, and ethical development of students as citizens, scholars, and professionals. University graduates are prepared to contribute to a global society that requires leaders with creativity, integrity, and a dedication to service.

The University of Delaware promotes an environment in which all people are inspired to learn, and encourages intellectual curiosity, critical thinking, free inquiry, and respect for the views and values of an increasingly diverse population.

An institution engaged in addressing the critical needs of the state, nation, and global community, the University of Delaware carries out its mission with the support of alumni who span the globe and in partnership with public, private, and nonprofit institutions in Delaware and beyond.

### **STRATEGIC MILESTONES**

The following strategic goals build upon key strengths and critical capabilities of the University of Delaware and define the aspirations and initiatives that will advance the University on a Path to Prominence™. The implementation of action steps developed for each of these milestones will assist in fulfilling the mission and vision of the University.

- Create a diverse and stimulating undergraduate academic environment that attracts and supports students from Delaware and diverse backgrounds and enhances intellectual exploration.
- Develop faculty leadership in key intellectual areas to strengthen and expand high-profile research initiatives and increase the profile and growth of graduate studies.

- Support excellence in professional education, including the establishment of new programs in areas of health, educational leadership, and applied science and engineering.
- Strengthen the University's initiative for the planet that will lead to path-breaking environmental research, the development of alternative energy technologies and demonstrate ecologically-friendly green practices.
- Foster knowledge and awareness of the economic, environmental, political, cultural and social issues that face the world through the establishment of an institute for global studies and developing strategic and active global partnerships.
- Promote public service and the engagement of the University with issues of importance to Delaware, the nation, and the world community.

#### **INITIATIVES AND ACCOMPLISHMENTS**

Many academic and administrative initiatives are currently being implemented in order to meet the University's strategic milestones, including:

- An expanded Commitment to Delawareans program that defines the academic roadmap for admission and success at UD, provides early notification of admission, and commits to meeting the full demonstrated financial need of every Delaware student admitted to the Newark campus up to the cost of tuition, fees, on campus room and board and books;
- Establishment of a diversity task force to enhance the University's ethnic and geographic diversity;
- Creation of new faculty chairs in energy, the environment and health sciences;
- Agreement on an "expanded partnership in Health Education" with Thomas Jefferson University that supports collaborative programs in pharmacy, occupational health, public health, and other areas;
- Development of new undergraduate programs in environmental sciences and environmental studies, and the planning of a University-wide Institute for Environmental Research;
- Initiation of a carbon impact analysis of the Newark campus;
- Launching of the University of Delaware Energy Institute;
- Strengthening the Office of Graduate and Professional Education and development of new university-wide interdisciplinary and professional programs;
- Establishment of the Office of Economic Innovation and Partnerships;
- Launching a new alumni virtual community to enhance alumni connections and increase private support to the University; and
- Implementation of a responsibility-based budgeting management practice to appropriately allocate resources to support programs of excellence at the College and unit level.





*2008-09*

## **AT A GLANCE**

**History/Location:** The University of Delaware, a state assisted institution, is a Land Grant, Sea Grant, Space Grant, Urban Grant, Carnegie Research University (very high research activity). The University, with origins in 1743, was chartered by the State of Delaware in 1833. A Women's College was opened in 1914, and in 1945 UD became permanently coeducational. The main campus is located in Newark, Delaware, a suburban community of nearly 30,000, situated midway between Philadelphia and Baltimore. Courses are also offered at the Wilmington campus and at other locations throughout the State, including Dover, Georgetown, Milford, and Lewes.

**Academic Schools, Programs, and Degrees:** Agriculture and Natural Resources; Arts and Sciences; Business and Economics; Engineering; Health Sciences; Human Services, Education and Public Policy; and Marine and Earth Studies. UD offers 4 associate's programs, 130 bachelor's programs, 79 master's programs, 39 doctoral programs, and 11 dual graduate programs. In 2007-08, UD awarded 188 associate's degrees, 3,500 bachelor's degrees, 695 master's degrees, and 208 doctoral degrees. Doctoral and professional degrees were awarded in Agriculture, Business and Economics, Education, Engineering, Individual and Family Studies, Marine Studies, Nursing, Urban Affairs and Public Policy, and a range of Arts & Sciences disciplines (including Art History, Biological Sciences, Chemistry and Biochemistry, Computer and Information Sciences, English, History, Linguistics, Mathematical Sciences, Physical Therapy, Physics, Political Science and International Relations, Psychology, and Sociology).

**Institutional Accreditation:** The University of Delaware has been continuously accredited by the Middle States Commission on Higher Education since that association's inception in 1921. The University's accreditation was reaffirmed in 2006 and its next self-study evaluation is scheduled for 2011. The regional, national and specialized accrediting organizations that accredit UD's programs/degrees appear at the end of this book.

**Faculty:** In 2008-09, there are 1,117 full-time faculty positions. Approximately 80% of full-time tenure-eligible faculty are tenured and over 80% of full-time faculty hold the doctorate or terminal professional degree in their field. Average total compensation in 2008-09 is \$165,800 for Full Professors, \$116,423 for Associate Professors, and \$99,072 for Assistant Professors.

**Enrollment:** Fall 2008 enrollment totals 20,500 which include 16,075 undergraduates, 3,448 graduate students, and 977 professional and continuing studies students. 15,287 (95%) of undergraduate and 2,584 (74%) of graduate students are enrolled on a full-time basis. Forty-two percent of undergraduate students are male. Sixty-four percent of undergraduate and 70% of graduate students are from out-of-state. 5.6% of undergraduate and 4.8% of graduate students are African-American. Approximately 50% of undergraduate students live in residence halls.

**Admissions/Retention:** Over 22,000 students applied to the University of Delaware for Fall 2008 enrollment. 3,863 (29.1%) first-time freshmen accepted their admission offers. Average SAT score (critical reading plus mathematics) for first-time Newark Campus freshmen was 1200. On average, 91% of Newark Campus freshmen return for their sophomore year and approximately 3 out of 4 students graduate within five years.

**Costs:** Annual full-time undergraduate tuition and fees for 2008-09 are \$8,646 (in-state) and \$21,126 (out-of-state). Room and board is \$8,478. Total undergraduate costs for 2008-09 are \$17,124 (in-state) and \$29,604 (out-of-state).

**Finances:** For Fiscal Year 2008, Total Operating Revenues were \$692.4 million, including \$127.2 million for State Appropriations. Total Operating Expenses and Transfers were \$692.4 million. Externally Funded Activity totaled \$166.4 million.

**Institutional Affiliations:** UD is a member of the National Association of State Universities and Land Grant Colleges (NASULGC). In athletics, UD began NCAA Division I competition in 1973 for men and 1982 for women. UD currently competes in the Colonial Athletic Association (CAA) for all sports. Football competes at the Championship Subdivision level, and all other sports compete at the Division I level.

**SYNOPSIS OF UNDERGRADUATE DEGREE PROGRAMS AND MAJORS**

COLLEGE OF AGRICULTURE AND NATURAL RESOURCES	<i>Associate in Science</i>		
	<i>Bachelor of Science</i>	Agriculture and Natural Resources Agricultural Education Animal and Food Sciences Engineering Technology (includes Applied Electronics and Controls, and Construction Technology and Technical Management) Entomology Environmental Soil Science Food and Agribusiness Management (includes Food Marketing) Food Science Landscape Horticulture and Design (includes Landscape Horticulture,	Landscape Design, and Public Horticulture) Natural Resource Management Plant Protection Plant Science Pre-Veterinary Medicine and Animal Biosciences Resource Economics (includes Environmental Economics and Sustainable Development) Statistics Wildlife Conservation
COLLEGE OF ARTS AND SCIENCES	<i>Associate in Arts</i>		
	<i>Associate in Science</i>		
	<i>Bachelor of Arts</i>	Ancient Greek and Roman Studies Anthropology Anthropology Education Art Art History Biological Sciences Biological Sciences Education Black American Studies Chemistry Chemistry Education Communication (includes Interpersonal, Mass Communication) Comparative Literature Computer Science Criminal Justice East Asian Studies English (includes Creative Writing, Drama, Ethnic/Cultural Studies, Film, Literary Studies, Professional Writing) English Education European Studies Foreign Languages and Literatures (includes Ancient Greek and Roman Studies, French Studies, German Studies, Italian Studies, Russian Studies, Spanish Studies, Three Languages) French Education French/Political Science Geography Geography Education German Education German/Political Science History (includes American History, European History, and World History)	History Education History/Classics History/French History/German History/Russian History/Spanish International Relations Italian Education Latin American Studies Latin Education Material Culture Preservation Mathematical Sciences Mathematics Education Music (includes Music Management Studies) Philosophy Physics Physics Education Political Science (includes American Politics, Global Studies, Public Law, Public Policy and Administration) Political Science Education Psychology Psychology Education Sociology (includes Emergency and Environmental Management, Health Services, Law and Society, and Social Welfare) Sociology Education Spanish Education Spanish/Political Science Women's Studies
	<i>Bachelor of Arts in Liberal Studies</i>	Liberal Studies	
	<i>Bachelor of Fine Arts</i>	Fine Arts	Visual Communications
	<i>Bachelor of Music</i>	Applied Music--Instrumental (Winds, Strings, and Percussion) Applied Music--Keyboard (Piano, Organ, Harpsichord) Applied Music--Guitar Applied Music--Voice	Music Theory/Composition Music Education--Instrumental (Winds, Strings, and Percussion) Music Education--General/Choral (includes Piano, Voice)
	<i>Bachelor of Science</i>	Biochemistry Biological Sciences (includes Biotechnology, Cellular and Molecular Biology and Genetics, Ecology and Organismic Biology) Chemistry (includes Environmental Chemistry) Cognitive Science Computer Science Environmental Science	Information Systems Mathematical Sciences Mathematics Education Mathematics and Economics Physics (includes Astronomy/Astrophysics) Psychology Quantitative Biology

ALFRED LERNER COLLEGE OF BUSINESS AND ECONOMICS	<i>Bachelor of Arts</i>	Economics (includes Applied Economics, Economic Theory and Econometrics, Economics Education)	
	<i>Bachelor of Science</i>	Accounting Economics (includes Applied Economics, Economic Theory and Econometrics) Finance Hotel, Restaurant and Institutional Management	International Business Studies Management Information Systems Management Marketing Operations Management
COLLEGE OF ENGINEERING	<i>Bachelor of Chemical Engineering</i>	Chemical Engineering	
	<i>Bachelor of Civil Engineering</i>	Civil Engineering	
	<i>Bachelor of Computer Engineering</i>	Computer Engineering	
	<i>Bachelor of Electrical Engineering</i>	Electrical Engineering	
	<i>Bachelor of Environmental Engineering</i>	Environmental Engineering	
	<i>Bachelor of Mechanical Engineering</i>	Mechanical Engineering	
COLLEGE OF HEALTH SCIENCES	<i>Bachelor of Science</i>	Applied Nutrition Athletic Training Dietetics Exercise Science (includes Biomechanics, Exercise Physiology) Health Behavior Science (includes Fitness Management and Leisure Service Management)	Health and Physical Education Health Studies Medical Technology Nutritional Sciences Sport Management
	<i>Bachelor of Science in Nursing</i>	Nursing	Baccalaureate for the Registered Nurse (B.R.N.)
COLLEGE OF HUMAN SERVICES, EDUCATION AND PUBLIC POLICY	<i>Associate in Arts</i>		
	<i>Bachelor of Arts in Educational Studies</i>	Educational Studies	
	<i>Bachelor of Science in Education</i>	Elementary Teacher Education	
	<i>Bachelor of Science</i>	Apparel Design Early Childhood Education Fashion Merchandising Human Services (Clinical Services, Administration & Family Policy)	Human Services, Education and Public Policy Leadership
COLLEGE OF MARINE AND EARTH STUDIES	<i>Bachelor of Arts</i>	Earth Science Education	Geology
	<i>Bachelor of Science</i>	Geology	

**SYNOPSIS OF GRADUATE DEGREE PROGRAMS**

COLLEGE OF AGRICULTURE AND NATURAL RESOURCES	<i>Master of Arts</i>	Agricultural and Technology Education	
	<i>Master of Science</i>	Agriculture and Resource Economics Animal Science Bioresources Engineering Entomology Food Science	Operations Research Plant and Soil Sciences Public Horticulture Statistics Wildlife Ecology
	<i>Doctor of Philosophy</i>	Animal Science Entomology and Wildlife Ecology	Operations Research Plant and Soil Sciences
COLLEGE OF ARTS AND SCIENCES	<i>Master of Arts</i>	American Material Culture Art History Chemistry and Biochemistry Communication Criminology English Foreign Languages and Literatures Foreign Languages and Pedagogy	Geography History Liberal Studies Linguistics and Cognitive Science Political Science and International Relations Psychology Sociology
	<i>Master of Fine Arts</i>	Fine Arts	Theatre
	<i>Master of Music</i>	Music (includes Performance, Teaching and Composition)	
	<i>Master of Science</i>	Applied Mathematics Art Conservation Biological Sciences Biomechanics and Movement Science (interdisciplinary)	Chemistry and Biochemistry Computer Science Geography Mathematics Physics
	<i>Doctor of Philosophy</i>	Applied Mathematics Art History Biological Sciences Biological Sciences/Business Administration Biomechanics and Movement Science (interdisciplinary) Chemistry and Biochemistry Computer Science Criminology English	Geography History Linguistics Mathematics Physics Political Science and International Relations Preservation Studies Psychology Sociology
	<i>Doctor of Philosophy/Master of Business Administration</i>	Biological Sciences/Business Administration	
	<i>Doctor of Physical Therapy</i>	Physical Therapy	
ALFRED LERNER COLLEGE OF BUSINESS AND ECONOMICS	<i>Master of Arts</i>	Economics	Economics and Entrepreneurship for Educators
	<i>Master of Arts/Master of Business Administration</i>	Economics/Business Administration	
	<i>Dual MBA and Engineering Master's Program</i>	<i>See the College of Engineering</i>	
	<i>Master of Business Administration</i>	Business Administration	
	<i>Master of Business Administration/Master of Science</i>	Business Administration/ Organizational Effectiveness, Development and Change	Business Administration/ Information Systems and Technology Management
	<i>Master of Science</i>	Accounting Economics Hospitality Information Management Information Systems and Technology Management	Organizational Effectiveness, Development and Change Finance
	<i>Doctor of Philosophy/Master of Business Administration</i>	Biological Sciences/Business Administration	
	<i>Doctor of Philosophy</i>	Economics	

COLLEGE OF ENGINEERING	<i>Master of Applied Sciences</i>	Civil Engineering		
	<i>Master of Applied Sciences / MBA</i>	Civil Engineering / Business Administration		
	<i>Master of Chemical Engineering</i>	Chemical Engineering		
	<i>Master of Chemical Engineering / MBA</i>	Chemical Engineering / Business Administration		
	<i>Master of Civil Engineering</i>	Civil Engineering		
	<i>Master of Civil Engineering / MBA</i>	Civil Engineering / Business Administration		
	<i>Master of Science</i>	Biomechanics Electrical and Computer Engineering	Mechanical Engineering (thesis) Ocean Engineering	
	<i>Master of Science / MBA</i>	Electrical and Computer Engineering / Business Administration	Mechanical Engineering (thesis) / Business Administration	
	<i>Master of Engineering: Mechanical</i>	Mechanical Engineering (non-thesis)		
	<i>Master of Engineering: Mechanical / MBA</i>	Mechanical Engineering (non-thesis) / Business Administration		
	<i>Master of Materials Science and Engineering</i>	Materials Science and Engineering		
	<i>Master of Materials Science and Engineering / MBA</i>	Materials Science and Engineering / Business Administration		
	COLLEGE OF HEALTH SCIENCES	<i>Doctor of Philosophy</i>	Chemical Engineering Civil Engineering Electrical and Computer Engineering	Materials Science and Engineering Mechanical Engineering Ocean Engineering
<i>Master of Science</i>		Biomechanics Exercise Science Health Promotion Health Services Administration	Human Nutrition Human Nutrition/Dietetic Internship Program	
<i>Master of Science in Nursing</i>		Nursing (includes Adult Nurse Practitioner, Clinical Nurse Specialist, Family Nurse Practitioner, Health Services Administration, and Neonatal Nurse Practitioner Certification)		
<i>Certificate Programs</i>		Nutrition and Dietetics Certificate Program	Post-Master's Certificate Program in Nursing	
COLLEGE OF HUMAN SERVICES, EDUCATION AND PUBLIC POLICY	<i>Master of Arts</i>	Counseling in Higher Education Education School Psychology	Teaching English as a Second Language Urban Affairs and Public Policy	
	<i>Master of Education</i>	Curriculum and Instruction School Leadership Higher Education	Educational Technology Exceptional Children and Youth Reading	
	<i>Master of Environmental and Energy Policy</i>	Environmental and Energy Policy		
	<i>Master of Instruction</i>	Instruction		
	<i>Master of Public Administration</i>	Public Administration		
	<i>Master of Science</i>	Fashion Studies	Human Development and Family Studies	
	<i>Education Specialist</i>	School Psychology		
	<i>Doctor of Education</i>	Educational Leadership		
	<i>Doctor of Philosophy</i>	Education Environmental and Energy Policy	Human Development and Family Studies Urban Affairs and Public Policy	
<i>Certificate Program</i>	Socially Responsible and Sustainable Apparel Business			
COLLEGE OF MARINE AND EARTH STUDIES	<i>Master of Marine Management</i>	Marine Management		
	<i>Master of Marine Policy</i>	Marine Policy		
	<i>Master of Science</i>	Geology Marine Studies	Ocean Engineering	
	<i>Doctor of Philosophy</i>	Geology Marine Studies	Oceanography Ocean Engineering	

**TWENTY-FIVE MOST POPULAR  
UNDERGRADUATE MAJORS**  
*Fall 2008*

Rank	Major
1	Biological Sciences
2	Finance
3	Nursing
4	Psychology
5	Elementary Teacher Education
6	English
7	Marketing
8	Mechanical Engineering
9	Accounting
10	Political Science
11	Business Administration
12	Hotel, Restaurant and Institutional Management
13	Criminal Justice
14	History
15	Civil Engineering
16	Communication Interest
17	Chemical Engineering
18	Fashion Merchandising
19	Management
20	International Relations
21	Exercise Science
22	Animal Science
23	Communication
24	Sociology
25	Dietetics

Source: Office of Institutional Research & Planning/UDEW



**AVERAGE SCHOLASTIC APTITUDE TEST SCORES  
BY RESIDENCE FOR FIRST-TIME FRESHMEN  
*Fall 2008***

<b>SAT Critical Reading Scores</b>		
<b>Associate in Arts</b>		
Delawareans <sup>1</sup>		495
<b>Newark Campus</b>		
Delawareans		573
Nonresidents		595
<b>Total</b>		<b>589</b>
National Avg.		502
<b>SAT Mathematics Scores</b>		
<b>Associate in Arts</b>		
Delawareans <sup>1</sup>		488
<b>Newark Campus</b>		
Delawareans		579
Nonresidents		623
<b>Total</b>		<b>611</b>
National Avg.		515
<b>SAT Writing Scores</b>		
<b>Associate in Arts</b>		
Delawareans <sup>1</sup>		485
<b>Newark Campus</b>		
Delawareans		568
Nonresidents		609
<b>Total</b>		<b>597</b>
National Avg.		494

<sup>1</sup> Includes children of employees and armed forces personnel stationed in Delaware and students who are in the process of fulfilling the 12 month durational requirement for Delaware residency.

Source: Office of Institutional Research & Planning/UDEW

**FIRST-TIME FRESHMAN ADMISSIONS ACTIVITY**  
**Fall 2008**

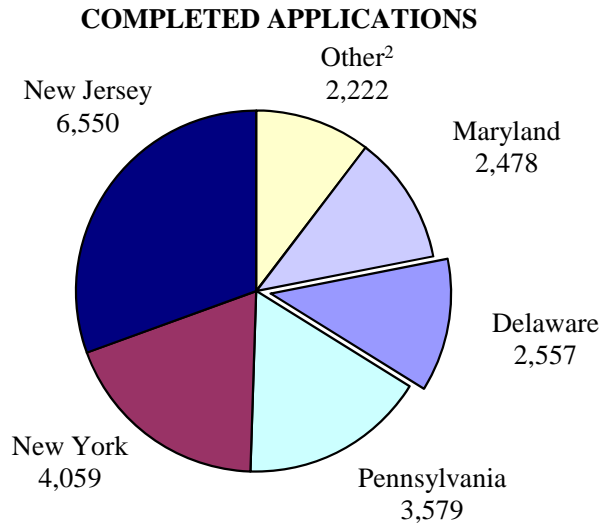
	Total Applications	Completed Applications	Offered Admission	Offer Rate	Offer Accepted	Yield Rate
<b>ALL STUDENTS</b>						
Applied to Newark Campus	25,048	22,491	12,586	56.0%	3,526	28.0%
Applied to Newark Campus, but admitted to Associate in Arts Program	--	--	609	2.7%	279	45.8%
Applied to Associate in Arts Program	160	128	82	64.1%	58	70.7%
<b>TOTAL</b>	<b>25,208</b>	<b>22,619</b>	<b>13,277</b>	<b>58.7%</b>	<b>3,863</b>	<b>29.1%</b>
<b>DELAWAREANS</b>						
Applied to Newark Campus	2,618	2,429	1,574	64.8%	964	61.2%
Applied to Newark Campus, but admitted to Associate in Arts Program <sup>1</sup>	--	--	609	25.1%	279	45.8%
Applied to Associate in Arts Program <sup>1</sup>	160	128	82	64.1%	58	70.7%
<b>TOTAL</b>	<b>2,778</b>	<b>2,557</b>	<b>2,265</b>	<b>88.6%</b>	<b>1,301</b>	<b>57.4%</b>
<b>NONRESIDENTS</b>						
Applied to Newark Campus	22,430	20,062	11,012	54.9%	2,562	23.3%
<b>TOTAL</b>	<b>22,430</b>	<b>20,062</b>	<b>11,012</b>	<b>54.9%</b>	<b>2,562</b>	<b>23.3%</b>

<sup>1</sup> Includes children of employees and armed forces personnel stationed in Delaware, and students who are in the process of fulfilling the 12 month durational requirement for Delaware residency.

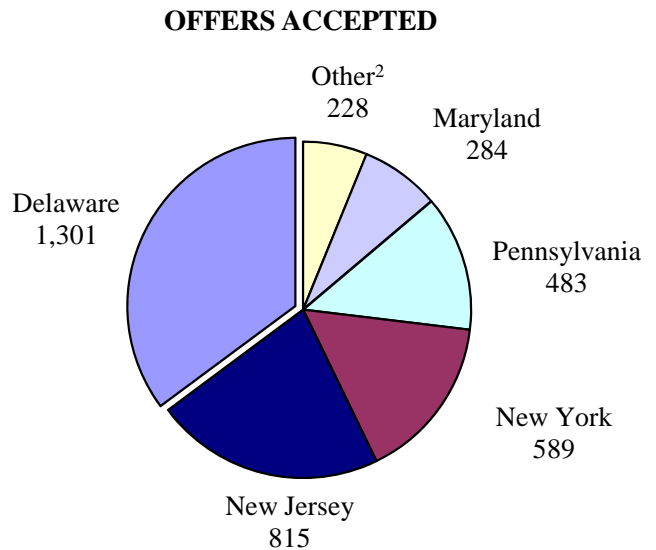
Source: Office of Institutional Research & Planning/UDEW

**DISTRIBUTION OF COMPLETED ADMISSIONS APPLICATIONS  
AND ACCEPTED OFFERS  
FIRST-TIME FRESHMEN FROM SELECT REGIONAL STATES  
Fall 2008**

STATE	COMPLETED APPLICATIONS	% OF TOTAL <sup>1</sup>
New Jersey	6,550	30.5%
New York	4,059	18.9%
Pennsylvania	3,579	16.7%
<b>DELAWARE</b>	<b>2,557</b>	<b>11.9%</b>
Maryland	2,478	11.6%
Massachusetts	835	3.9%
Connecticut	806	3.8%
Virginia	487	2.3%
District of Columbia	94	0.4%
<b>TOTAL<sup>1</sup></b>	<b>21,445</b>	<b>100.0%</b>



STATE	OFFER ACCEPTED	% OF TOTAL <sup>1</sup>
<b>DELAWARE</b>	<b>1,301</b>	<b>35.2%</b>
New Jersey	815	22.0%
New York	589	15.9%
Pennsylvania	483	13.1%
Maryland	284	7.7%
Massachusetts	91	2.5%
Connecticut	72	1.9%
Virginia	56	1.5%
District of Columbia	9	0.2%
<b>TOTAL<sup>1</sup></b>	<b>3,700</b>	<b>100.0%</b>



<sup>1</sup> Total refers to applications and accepted offers from these nine states only.

<sup>2</sup> Other includes Connecticut, Massachusetts, Virginia, and the District of Columbia.

**ENROLLMENT BY COLLEGE OR DIVISION  
AND TIME STATUS  
*Fall 2004 Through Fall 2008***

	2004	2005	2006	2007	2008
<b>UNIVERSITY TOTAL</b>	<b>21,238</b>	<b>20,982</b>	<b>20,380</b>	<b>20,342</b>	<b>20,500</b>
Full-Time	18,134	17,956	17,546	17,679	17,881
Part-Time	3,104	3,026	2,834	2,663	2,619
<b>Undergraduate<sup>1</sup></b>	<b>16,548</b>	<b>16,350</b>	<b>15,849</b>	<b>15,983</b>	<b>16,075</b>
Full-Time	15,580	15,435	14,992	15,152	15,287
Part-Time	968	915	857	831	788
<b>Graduate<sup>2</sup></b>	<b>3,395</b>	<b>3,434</b>	<b>3,446</b>	<b>3,405</b>	<b>3,448</b>
Full-Time	2,519	2,502	2,540	2,514	2,584
Part-Time	876	932	906	891	864
<b>Professional &amp; Continuing Studies<sup>3</sup></b>	<b>1,295</b>	<b>1,198</b>	<b>1,085</b>	<b>954</b>	<b>977</b>
Full-Time	35	19	14	13	10
Part-Time	1,260	1,179	1,071	941	967
<b>College of Agriculture &amp; Natural Resources</b>	<b>835</b>	<b>805</b>	<b>771</b>	<b>833</b>	<b>849</b>
Undergraduate	676	636	596	664	669
Full-Time	610	579	529	606	623
Part-Time	66	57	67	58	46
Graduate	159	169	175	169	180
Full-Time	142	154	160	157	172
Part-Time	17	15	15	12	8
<b>College of Arts &amp; Sciences</b>	<b>8,303</b>	<b>8,178</b>	<b>7,755</b>	<b>7,597</b>	<b>7,525</b>
Undergraduate	7,041	6,948	6,540	6,409	6,288
Full-Time	6,619	6,544	6,169	6,010	5,914
Part-Time	422	404	371	399	374
Graduate	1,262	1,230	1,215	1,188	1,237
Full-Time	1,133	1,088	1,094	1,082	1,140
Part-Time	129	142	121	106	97
<b>Office of University Studies</b>	<b>1,311</b>	<b>1,086</b>	<b>1,014</b>	<b>923</b>	<b>956</b>
(No Graduate Program)					
Undergraduate	1,311	1,086	1,014	923	956
Full-Time	1,247	1,044	974	890	916
Part-Time	64	42	40	33	40

## ENROLLMENT (Continued)

	2004	2005	2006	2007	2008
<b>Alfred Lerner College of Business &amp; Economics<sup>4</sup></b>	<b>2,628</b>	<b>2,708</b>	<b>2,785</b>	<b>2,899</b>	<b>3,452</b>
Undergraduate	2,098	2,171	2,273	2,368	2,906
Full-Time	2,037	2,114	2,206	2,314	2,835
Part-Time	61	57	67	54	71
Graduate	530	537	512	531	546
Full-Time	239	244	243	245	253
Part-Time	291	293	269	286	293
<b>College of Engineering</b>	<b>1,722</b>	<b>1,782</b>	<b>1,731</b>	<b>1,794</b>	<b>1,845</b>
Undergraduate	1,202	1,240	1,206	1,286	1,336
Full-Time	1,174	1,203	1,173	1,255	1,303
Part-Time	28	37	33	31	33
Graduate	520	542	525	508	509
Full-Time	459	468	452	448	463
Part-Time	61	74	73	60	46
<b>College of Health Sciences</b>	<b>1,743</b>	<b>1,796</b>	<b>1,822</b>	<b>2,001</b>	<b>1,992</b>
Undergraduate	1,600	1,647	1,652	1,777	1,804
Full-Time	1,418	1,481	1,501	1,634	1,659
Part-Time	182	166	151	143	145
Graduate	143	149	170	224	188
Full-Time	62	54	69	81	62
Part-Time	81	95	101	143	126
<b>College of Human Services, Education &amp; Public Policy</b>	<b>2,777</b>	<b>2,720</b>	<b>2,631</b>	<b>2,523</b>	<b>2,071</b>
Undergraduate	2,095	2,014	1,906	1,852	1,401
Full-Time	2,004	1,915	1,825	1,775	1,345
Part-Time	91	99	81	77	56
Graduate	682	706	725	671	670
Full-Time	389	397	399	389	380
Part-Time	293	309	326	282	290
<b>College of Marine &amp; Earth Studies</b>	<b>99</b>	<b>101</b>	<b>148</b>	<b>153</b>	<b>165</b>
Undergraduate <sup>5</sup>	--	--	24	39	47
Full-Time	--	--	23	35	44
Part-Time	--	--	1	4	3
Graduate	99	101	124	114	118
Full-Time	95	97	123	112	114
Part-Time	4	4	1	2	4

**ENROLLMENT (Continued)**

	2004	2005	2006	2007	2008
<b>Newark Campus</b>	<b>19,418</b>	<b>19,176</b>	<b>18,657</b>	<b>18,723</b>	<b>18,855</b>
Undergraduate	16,023	15,742	15,211	15,318	15,407
Full-Time	15,109	14,880	14,400	14,519	14,639
Part-Time	914	862	811	799	768
Graduate	3,395	3,434	3,446	3,405	3,448
Full-Time	2,519	2,502	2,540	2,514	2,584
Part-Time	876	932	906	891	864
<b>Associate in Arts: Georgetown</b>	<b>200</b>	<b>166</b>	<b>153</b>	<b>118</b>	<b>148</b>
Undergraduate	200	166	153	118	148
Full-Time	164	134	138	117	144
Part-Time	36	32	15	1	4
<b>Associate in Arts: Dover</b>	<b>66</b>	<b>113</b>	<b>113</b>	<b>115</b>	<b>112</b>
Undergraduate	66	113	113	115	112
Full-Time	55	108	109	113	107
Part-Time	11	5	4	2	5
<b>Associate in Arts: Wilmington</b>	<b>259</b>	<b>329</b>	<b>372</b>	<b>432</b>	<b>408</b>
Undergraduate	259	329	372	432	408
Full-Time	252	313	345	403	397
Part-Time	7	16	27	29	11
<b>University Associate in Arts Program<sup>6</sup></b>	<b>525</b>	<b>608</b>	<b>638</b>	<b>665</b>	<b>668</b>
Undergraduate	525	608	638	665	668
Full-Time	471	555	592	633	648
Part-Time	54	53	46	32	20

<sup>1</sup> Official 10th Day headcounts, Newark Campus and University Associate in Arts Program combined.

<sup>2</sup> Graduate students on sustaining status are considered full-time if the student spends at least one-half time on the completion of his/her thesis or dissertation.

<sup>3</sup> Professional & Continuing Studies Students are non-matriculated and are unclassified although enrolled in undergraduate and graduate degree credit courses.

<sup>4</sup> The Hotel, Restaurant & Institutional Management Department moved from the College of Human Services, Education and Public Policy to the Alfred Lerner College of Business and Economics in 2008.

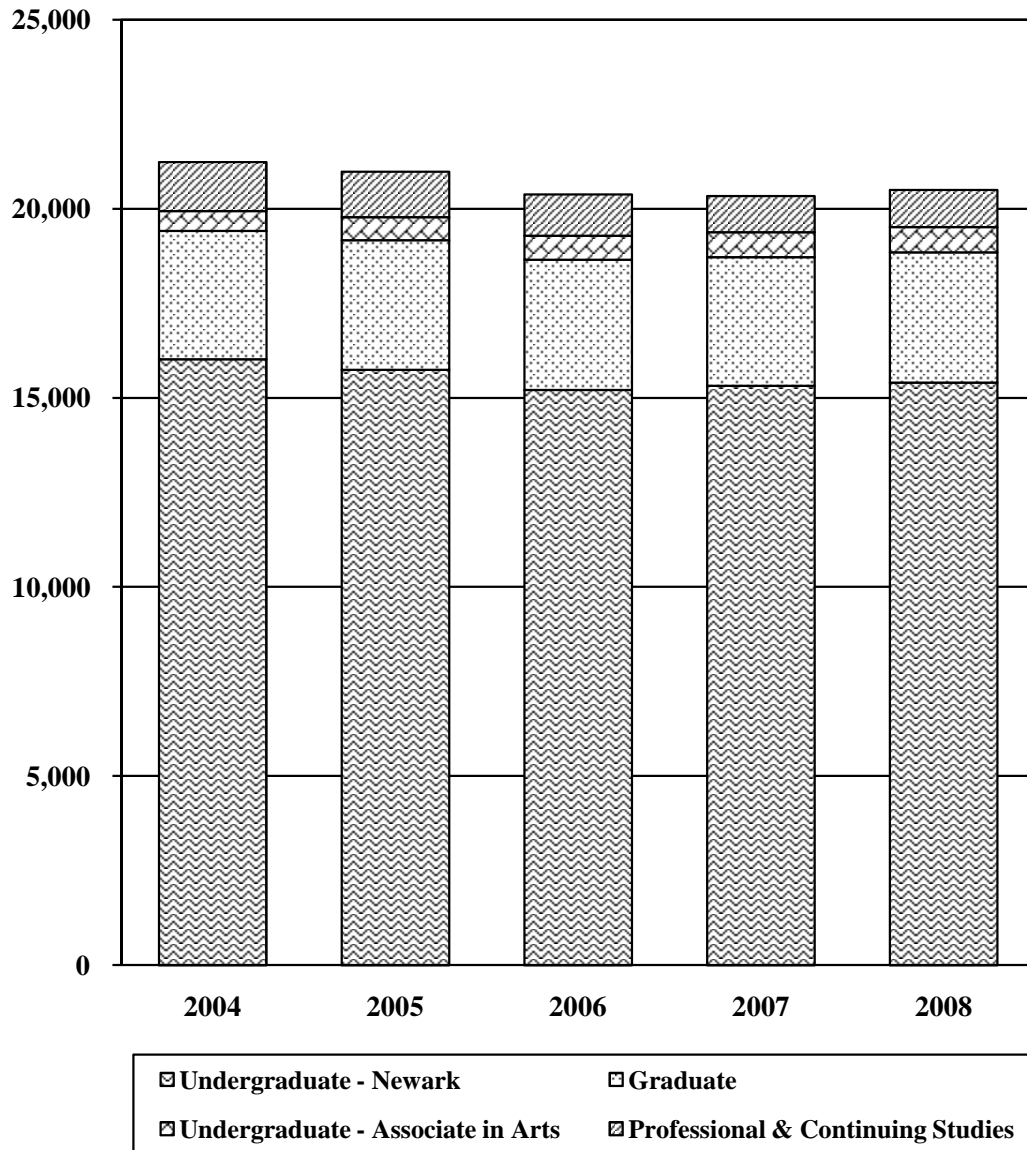
<sup>5</sup> The Geology Department moved from the College of Arts & Sciences to the College of Marine & Earth Studies in 2006.

<sup>6</sup> The University Associate in Arts Program commenced in 2004 and replaced the University Parallel Program.

Source: Office of Institutional Research & Planning/UDEW

## TRENDS IN TOTAL ENROLLMENT

*Fall 2004 Through Fall 2008*





## ETHNICITY OF STUDENTS BY TIME STATUS

### *Fall 2004 Through Fall 2008*

#### A. FULL-TIME MATRICULATED STUDENTS

	2004		2005		2006		2007		2008	
	N	%	N	%	N	%	N	%	N	%
<b>Undergraduate<sup>1</sup></b>										
<b>Total</b>	<b>15,580</b>	<b>100.0</b>	<b>15,435</b>	<b>100.0</b>	<b>14,992</b>	<b>100.0</b>	<b>15,152</b>	<b>100.0</b>	<b>15,287</b>	<b>100.0</b>
White	13,233	84.9	13,033	84.4	12,451	83.1	12,286	81.1	12,256	80.2
African-American	865	5.6	864	5.6	800	5.3	846	5.6	839	5.5
Hispanic	570	3.7	630	4.1	661	4.4	778	5.1	831	5.4
Asian	524	3.4	537	3.5	575	3.8	589	3.9	643	4.2
Native American	39	0.3	49	0.3	52	0.3	49	0.3	42	0.3
Non-Resident Alien	158	1.0	116	0.8	96	0.6	148	1.0	160	1.0
Other <sup>2</sup>	191	1.2	206	1.3	357	2.4	456	3.0	516	3.4
<b>Graduate</b>										
<b>Total</b>	<b>2,519</b>	<b>100.0</b>	<b>2,502</b>	<b>100.0</b>	<b>2,540</b>	<b>100.0</b>	<b>2,514</b>	<b>100.0</b>	<b>2,584</b>	<b>100.0</b>
White	1,446	57.4	1,400	56.0	1,455	57.3	1,372	54.6	1,410	54.6
African-American	109	4.3	102	4.1	101	4.0	109	4.3	108	4.2
Hispanic	55	2.2	57	2.3	50	2.0	42	1.7	50	1.9
Asian	57	2.3	77	3.1	68	2.7	64	2.5	73	2.8
Native American	6	0.2	6	0.2	3	0.1	4	0.2	9	0.3
Non-Resident Alien	817	32.4	815	32.6	794	31.3	838	33.3	874	33.8
Other <sup>2</sup>	29	1.2	45	1.8	69	2.7	85	3.4	60	2.3

#### B. PART-TIME MATRICULATED STUDENTS

	2004		2005		2006		2007		2008	
	N	%	N	%	N	%	N	%	N	%
<b>Undergraduate<sup>1</sup></b>										
<b>Total</b>	<b>968</b>	<b>100.0</b>	<b>915</b>	<b>100.0</b>	<b>857</b>	<b>100.0</b>	<b>831</b>	<b>100.0</b>	<b>788</b>	<b>100.0</b>
White	790	81.6	731	79.9	674	78.6	643	77.4	624	79.2
African-American	84	8.7	86	9.4	86	10.0	65	7.8	57	7.2
Hispanic	27	2.8	31	3.4	23	2.7	26	3.1	26	3.3
Asian	39	4.0	34	3.7	35	4.1	42	5.1	28	3.6
Native American	6	0.6	3	0.3	7	0.8	7	0.8	8	1.0
Non-Resident Alien	9	0.9	9	1.0	4	0.5	14	1.7	14	1.8
Other <sup>2</sup>	13	1.3	21	2.3	28	3.3	34	4.1	31	3.9

**B. PART-TIME MATRICULATED STUDENTS (Continued)**

	2004		2005		2006		2007		2008	
	N	%	N	%	N	%	N	%	N	%
<b>Graduate</b>										
<b>Total</b>	<b>876</b>	<b>100.0</b>	<b>932</b>	<b>100.0</b>	<b>906</b>	<b>100.0</b>	<b>891</b>	<b>100.0</b>	<b>864</b>	<b>100.0</b>
White	727	83.0	761	81.7	706	77.9	675	75.8	666	77.1
African-American	52	5.9	70	7.5	59	6.5	49	5.5	56	6.5
Hispanic	10	1.1	17	1.8	13	1.4	22	2.5	25	2.9
Asian	34	3.9	34	3.6	37	4.1	52	5.8	54	6.3
Native American	4	0.5	3	0.3	4	0.4	3	0.3	3	0.3
Non-Resident Alien	23	2.6	33	3.5	49	5.4	44	4.9	26	3.0
Other <sup>2</sup>	26	3.0	14	1.5	38	4.2	46	5.2	34	3.9

**C. PROFESSIONAL & CONTINUING STUDIES STUDENTS**

	2004		2005		2006		2007		2008	
	N	%	N	%	N	%	N	%	N	%
<b>Undergraduate</b>										
<b>Total</b>	<b>1,295</b>	<b>100.0</b>	<b>1,198</b>	<b>100.0</b>	<b>1,085</b>	<b>100.0</b>	<b>954</b>	<b>100.0</b>	<b>977</b>	<b>100.0</b>
White	1,016	78.5	926	77.3	828	76.3	702	73.6	682	69.8
African-American	129	10.0	121	10.1	89	8.2	86	9.0	101	10.3
Hispanic	30	2.3	35	2.9	41	3.8	25	2.6	31	3.2
Asian	50	3.9	68	5.7	72	6.6	47	4.9	55	5.6
Native American	6	0.5	2	0.2	2	0.2	3	0.3	4	0.4
Non-Resident Alien	29	2.2	20	1.7	16	1.5	24	2.5	44	4.5
Other <sup>2</sup>	35	2.7	26	2.2	37	3.4	67	7.0	60	6.1

<sup>1</sup> Official 10<sup>th</sup> Day headcounts, Newark Campus and University Associate in Arts Program combined.

<sup>2</sup> Other includes Multiracial/Non-Specified, Native Hawaiian or Other Pacific Islander, or Unknown.

Note: Percentages may not total to 100.0 because of rounding.

Source: Office of Institutional Research & Planning/UDEW

**UNDERGRADUATE ENROLLMENT BY GENDER**  
**NEWARK CAMPUS**  
*Fall 2004 Through Fall 2008*

	2004		2005		2006		2007		2008	
	N	%	N	%	N	%	N	%	N	%
<b>Total - Newark Campus</b>										
Women	9,270	58	9,107	58	8,836	58	8,914	58	8,906	58
Men	6,753	42	6,635	42	6,375	42	6,404	42	6,501	42
<b>College of Agriculture &amp; Natural Resources</b>										
Women	409	61	379	60	350	59	411	62	407	61
Men	267	39	257	40	246	41	253	38	262	39
<b>College of Arts &amp; Sciences</b>										
Women	4,121	59	4,121	59	3,905	60	3,768	59	3,725	59
Men	2,920	41	2,827	41	2,635	40	2,641	41	2,563	41
<b>Alfred Lerner College of Business &amp; Economics<sup>1</sup></b>										
Women	800	38	840	39	901	40	982	41	1,280	44
Men	1,298	62	1,331	61	1,372	60	1,386	59	1,626	56
<b>College of Engineering</b>										
Women	242	20	259	21	236	20	281	22	274	21
Men	960	80	981	79	970	80	1,005	78	1,062	79
<b>College of Health Sciences</b>										
Women	1,223	76	1,224	74	1,216	74	1,295	73	1,339	74
Men	377	24	423	26	436	26	482	27	465	26
<b>College of Human Services, Education &amp; Public Policy</b>										
Women	1,792	86	1,713	85	1,631	86	1,604	87	1,297	93
Men	303	14	301	15	275	14	248	13	104	7
<b>College of Marine &amp; Earth Studies<sup>2</sup></b>										
Women	--	--	--	--	12	50	22	56	22	47
Men	--	--	--	--	12	50	17	44	25	53
<b>Office of University Studies</b>										
Women	683	52	571	53	585	58	551	60	562	59
Men	628	48	515	47	429	42	372	40	394	41

<sup>1</sup> The Hotel, Restaurant & Institutional Management Department moved from the College of Human Services, Education and Public Policy to the Alfred Lerner College of Business and Economics in 2008.

<sup>2</sup> The Geology Department moved from the College of Arts & Sciences to the College of Marine & Earth Studies in 2006.

Source: Office of Institutional Research & Planning/UDEW

**GRADUATE ENROLLMENT BY GENDER**  
**NEWARK CAMPUS**  
*Fall 2004 Through Fall 2008*

	2004		2005		2006		2007		2008	
	N	%	N	%	N	%	N	%	N	%
<b>Total - Newark Campus</b>										
Women	1,748	51	1,769	52	1,809	52	1,807	53	1,802	52
Men	1,647	49	1,665	48	1,637	48	1,598	47	1,646	48
<b>College of Agriculture &amp; Natural Resources</b>										
Women	82	52	83	49	96	55	96	57	95	53
Men	77	48	86	51	79	45	73	43	85	47
<b>College of Arts &amp; Sciences</b>										
Women	682	54	672	55	676	56	674	57	677	55
Men	580	46	558	45	539	44	514	43	560	45
<b>Alfred Lerner College of Business &amp; Economics<sup>1</sup></b>										
Women	194	37	194	36	190	37	201	38	223	41
Men	336	63	343	64	322	63	330	62	323	59
<b>College of Engineering</b>										
Women	139	27	150	28	137	26	125	25	134	26
Men	381	73	392	72	388	74	383	75	375	74
<b>College of Health Sciences</b>										
Women	110	77	123	83	140	82	190	85	160	85
Men	33	23	26	17	30	18	34	15	28	15
<b>College of Human Services, Education &amp; Public Policy</b>										
Women	493	72	498	71	509	70	463	69	459	69
Men	189	28	208	29	216	30	208	31	211	31
<b>College of Marine &amp; Earth Studies</b>										
Women	48	48	49	49	61	49	58	51	54	46
Men	51	52	52	51	63	51	56	49	64	54

<sup>1</sup> The Hotel, Restaurant & Institutional Management Department moved from the College of Human Services, Education and Public Policy to the Alfred Lerner College of Business and Economics in 2008.

Source: Office of Institutional Research & Planning/UDEW

**ENROLLMENT BY RESIDENCE STATUS**  
*Fall 2004 Through Fall 2008*

	2004		2005		2006		2007		2008	
	N	%	N	%	N	%	N	%	N	%
<b>TOTAL STUDENTS</b>	<b>21,238</b>		<b>20,982</b>		<b>20,380</b>		<b>20,342</b>		<b>20,500</b>	
Delawareans	9,411	44	9,136	44	8,618	42	8,295	41	8,038	39
Nonresidents	11,827	56	11,846	56	11,762	58	12,047	59	12,462	61
<b>NEWARK CAMPUS</b>										
<b>Undergraduate</b>	<b>16,023</b>		<b>15,742</b>		<b>15,211</b>		<b>15,318</b>		<b>15,407</b>	
Delawareans	6,741	42	6,474	41	6,044	40	5,883	38	5,613	36
Nonresidents	9,282	58	9,268	59	9,167	60	9,435	62	9,794	64
<b>Graduate</b>	<b>3,395</b>		<b>3,434</b>		<b>3,446</b>		<b>3,405</b>		<b>3,448</b>	
Delawareans	1,121	33	1,112	32	1,088	32	1,047	31	1,041	30
Nonresidents	2,274	67	2,322	68	2,358	68	2,358	69	2,407	70
<b>ASSOCIATE IN ARTS PROGRAM</b>	<b>525</b>		<b>608</b>		<b>638</b>		<b>665</b>		<b>668</b>	
Delawareans <sup>1</sup>	525	100	608	100	638	100	665	100	668	100
<b>PROFESSIONAL &amp; CONTINUING STUDIES</b>	<b>1,295</b>		<b>1,198</b>		<b>1,085</b>		<b>954</b>		<b>977</b>	
Delawareans	1,024	79	942	79	848	78	700	73	716	73
Nonresidents	271	21	256	21	237	22	254	27	261	27

<sup>1</sup> Includes children of employees and armed forces personnel stationed in Delaware, and students who are in the process of fulfilling the twelve month durational requirement for Delaware residency.

Source: Office of Institutional Research & Planning/UDEW



**RETENTION RATES FOR  
ENTERING FIRST-TIME, FULL-TIME FRESHMEN**

<b>NEWARK CAMPUS</b>	<b>2000</b>	<b>2001</b>	<b>2002</b>	<b>2003</b>	<b>2004</b>	<b>2005</b>	<b>2006</b>	<b>2007</b>
<b>Total # of Freshmen</b>	<b>3,128</b>	<b>3,362</b>	<b>3,401</b>	<b>3,433</b>	<b>3,442</b>	<b>3,506</b>	<b>3,252</b>	<b>3,571</b>
<b>% Retention to 2nd Fall</b>	<b>87.5</b>	<b>88.6</b>	<b>89.9</b>	<b>88.4</b>	<b>88.8</b>	<b>90.3</b>	<b>90.4</b>	<b>91.4</b>

<b>ASSOCIATE IN ARTS PROGRAM</b>	<b>2004</b>	<b>2005</b>	<b>2006</b>	<b>2007</b>
<b>GEORGETOWN</b>				
<b>Total # of Freshmen</b>	<b>83</b>	<b>58</b>	<b>70</b>	<b>63</b>
<b>% Retention to 2nd Fall</b>	<b>61.4</b>	<b>72.4</b>	<b>74.3</b>	<b>90.5</b>
<b>DOVER</b>				
<b>Total # of Freshmen</b>	<b>47</b>	<b>73</b>	<b>54</b>	<b>71</b>
<b>% Retention to 2nd Fall</b>	<b>63.8</b>	<b>75.3</b>	<b>75.9</b>	<b>80.3</b>
<b>WILMINGTON</b>				
<b>Total # of Freshmen</b>	<b>190</b>	<b>181</b>	<b>191</b>	<b>208</b>
<b>% Retention to 2nd Fall</b>	<b>69.5</b>	<b>70.7</b>	<b>72.8</b>	<b>81.2</b>
<b>TOTAL ASSOCIATE IN ARTS PROGRAM</b>				
<b>Total # of Freshmen</b>	<b>320</b>	<b>312</b>	<b>315</b>	<b>342</b>
<b>% Retention to 2nd Fall</b>	<b>66.6</b>	<b>72.1</b>	<b>73.7</b>	<b>82.7</b>

*Note: All entering new freshman cohorts adjusted to comply with IPEDS Graduation Rate Survey Definitions.*

Source: Office of Institutional Research & Planning



## GRADUATION RATES FOR ENTERING FIRST-TIME, FULL-TIME FRESHMEN

NEWARK CAMPUS		2000	2001	2002	2003
<b>Total Number in Cohort</b>		<b>3,128</b>	<b>3,362</b>	<b>3,401</b>	<b>3,433</b>
<b>% Graduating within Four Years</b>		<b>60.2</b>	<b>63.9</b>	<b>67.1</b>	<b>61.3</b>
Males		51.6	54.1	58.2	53.9
Females		65.6	71.0	72.8	66.9
African-Americans		41.0	43.8	41.1	44.4
Asians		59.8	57.9	62.0	59.9
Hispanics		54.3	50.0	66.1	54.5
Whites		61.9	65.8	69.0	63.3
Residents		47.6	52.1	55.7	49.4
Nonresidents		66.8	69.5	73.7	69.1
<b>% Graduating within Five Years</b>		<b>73.7</b>	<b>75.8</b>	<b>77.9</b>	<b>73.7</b>
Males		70.1	70.5	72.7	69.4
Females		75.9	79.7	81.2	76.9
African-Americans		60.8	61.6	56.8	59.6
Asians		72.0	72.9	74.1	71.5
Hispanics		69.1	67.9	71.6	68.5
Whites		74.9	77.1	79.6	75.3
Residents		68.0	72.2	72.0	66.4
Nonresidents		76.7	77.6	82.0	78.5

ASSOCIATE IN ARTS PROGRAM		2004	2005
<b>GEORGETOWN</b>			
<b>Total Number in Cohort</b>		<b>83</b>	<b>58</b>
% Graduating with AA within Two Years		10.8	17.2
% Graduating with AA within Three Years		19.3	29.3
<b>DOVER</b>			
<b>Total Number in Cohort</b>		<b>47</b>	<b>73</b>
% Graduating with AA within Two Years		40.4	46.6
% Graduating with AA within Three Years		48.9	52.1
<b>WILMINGTON</b>			
<b>Total Number in Cohort</b>		<b>190</b>	<b>181</b>
% Graduating with AA within Two Years		36.3	28.3
% Graduating with AA within Three Years		49.5	46.7
<b>TOTAL ASSOCIATE IN ARTS PROGRAM</b>			
<b>Total Number in Cohort</b>		<b>320</b>	<b>312</b>
% Graduating with AA within Two Years		30.3	30.5
% Graduating with AA within Three Years		41.6	44.8

*Note: Data comply with IPEDS Graduation Rate Survey Definitions (degrees earned through August 31 for respective cohorts).*

Source: Office of Institutional Research & Planning

**DEGREES GRANTED BY COLLEGE AND LEVEL**  
*2003-04 Through 2007-08*

	2004	2005	2006	2007	2008
<b>UNIVERSITY TOTALS</b>	<b>4,243</b>	<b>4,502</b>	<b>4,678</b>	<b>4,575</b>	<b>4,591</b>
Associate's Degrees <sup>1</sup>	10	14	77	162	188
Bachelor's Degrees	3,392	3,602	3,683	3,416	3,500
Master's Degrees	664	697	696	773	695
Doctorates	177	189	222	224	208
<b>College of Agriculture &amp; Natural Resources</b>					
Associate's Degrees <sup>1</sup>	1	1	1	1	1
Bachelor's Degrees	155	181	164	141	162
Master's Degrees	37	43	39	54	57
Doctorates	7	5	9	3	9
<b>College of Arts &amp; Sciences</b>					
Associate's Degrees <sup>1</sup>	9	13	76	160	187
Bachelor's Degrees	1,582	1,657	1,750	1,549	1,586
Master's Degrees	205	199	179	208	194
Doctorates	68	87	102	102	100
<b>Alfred Lerner College of Business &amp; Economics<sup>3</sup></b>					
Bachelor's Degrees	567	571	565	598	557
Master's Degrees	147	168	186	196	164
Doctorates	8	5	3	3	2
<b>College of Engineering</b>					
Bachelor's Degrees	170	200	205	238	238
Master's Degrees	66	62	70	68	60
Doctorates	48	56	59	65	48
<b>College of Health Sciences</b>					
Bachelor's Degrees	374	409	419	379	402
Master's Degrees	27	46	27	35	36
Doctorates	0	1	0	1	0
<b>College of Human Services, Education &amp; Public Policy</b>					
Associate's Degrees <sup>1</sup>	0	0	0	1	0
Bachelor's Degrees	544	584	580	503	547
Master's Degrees	169	162	185	202	174
Doctorates	39	24	40	43	43
<b>College of Marine &amp; Earth Studies</b>					
Bachelor's Degrees <sup>2</sup>	--	--	--	8	8
Master's Degrees	13	17	10	10	10
Doctorates	7	11	9	7	6

<sup>1</sup> The University Associate in Arts Program commenced in 2004 and granted its first degrees in 2005-06.

<sup>2</sup> The Geology Department moved from the College of Arts & Sciences to the College of Marine & Earth Studies in 2006.

<sup>3</sup> The Hotel, Restaurant & Institutional Management Department moved from the College of Human Services, Education and Public Policy to the Alfred Lerner College of Business and Economics in 2008.

Note: Graduation terms defined by federal IPEDS standards (July 1 through June 30).

Source: Office of Institutional Research & Planning/UDEW

**EMPLOYMENT AND EDUCATIONAL STATUS OF  
BACCALAUREATES BY CURRICULUM GROUP  
CLASS OF 2007**

Curriculum Group	Number in Class	Number Who Received Survey	Number of Respondents <sup>1</sup> n	Full-Time Employment %	Part-Time Employment %	Pursuing Further Education %	Still Seeking Employment %	
Agriculture & Natural Resources	139	138	40	29.0	57.5	7.5	32.5	2.5
Arts & Sciences								
Humanities	402	400	111	27.8	67.6	8.1	19.8	4.5
Social Sciences	829	822	245	29.8	60.4	4.9	29.0	4.5
Life & Health Sciences	145	143	60	42.0	36.7	--	60.0	3.3
Physical Sciences	171	170	44	25.9	86.4	--	11.4	2.3
Business & Economics	596	593	190	32.0	92.6	2.1	3.2	2.1
Engineering	239	236	123	52.1	81.3	1.6	15.4	0.8
Health Sciences	364	362	125	34.5	76.0	4.0	16.8	1.6
Human Services, Educ. & Public Policy	509	507	204	40.2	86.3	2.9	8.8	2.0
Marine & Earth Sciences	4	4	4	100.0	50.0	--	25.0	25.0
<b>2007 University Total<sup>2</sup></b>	<b>3,398</b>	<b>3,375</b>	<b>1,146</b>	<b>34.0</b>	<b>74.6</b>	<b>3.6</b>	<b>18.5</b>	<b>2.8</b>

<sup>1</sup> The 2007 Career Plans Survey represents survey respondents from the full baccalaureate graduating class.

<sup>2</sup> Two (0.2%) of the 1,146 respondents indicated they are not seeking work. University total includes all curriculum groups.

Note: Percentages may not total to 100.0 because of rounding.

Source: Data obtained through the Bank of America Career Services Center and the Office of Institutional Research & Planning Career Plans Survey

**EMPLOYEES BY ETHNICITY AND EEO CATEGORY**  
*Fall 2004 Through Fall 2008*

<b>EEO-6 CATEGORY</b>		<b>2004</b>	<b>2005</b>	<b>2006</b>	<b>2007</b>	<b>2008</b>
<b>Executive/</b>	<b>Full-Time - Total</b>	<b>366</b>	<b>378</b>	<b>376</b>	<b>379</b>	<b>387</b>
<b>Administrative/</b>	White	327	343	341	346	352
<b>Managerial</b>	African-American	29	28	26	23	22
	Hispanic	2	2	2	3	5
	Asian	6	3	4	4	5
	Native American	2	2	3	3	3
	Unknown	0	0	0	0	0
	<b>Part-Time - Total</b>	<b>13</b>	<b>10</b>	<b>14</b>	<b>10</b>	<b>10</b>
	White	13	10	14	10	10
	African-American	0	0	0	0	0
	Hispanic	0	0	0	0	0
	Asian	0	0	0	0	0
	Native American	0	0	0	0	0
	Unknown	0	0	0	0	0
<b>Faculty</b>	<b>Full-Time - Total</b>	<b>1,070</b>	<b>1,077</b>	<b>1,117</b>	<b>1,117</b>	<b>1,117</b>
	White	916	911	938	934	936
	African-American	47	45	51	49	53
	Hispanic	20	27	27	30	27
	Asian	83	90	98	101	98
	Native American	4	4	3	3	3
	Unknown	0	0	0	0	0
	<b>Part-Time - Total</b>	<b>24</b>	<b>33</b>	<b>33</b>	<b>32</b>	<b>36</b>
	White	23	28	28	23	26
	African-American	1	2	2	4	3
	Hispanic	0	0	0	0	2
	Asian	0	3	3	5	5
	Native American	0	0	0	0	0
	Unknown	0	0	0	0	0
<b>Professional</b>	<b>Full-Time - Total</b>	<b>948</b>	<b>974</b>	<b>953</b>	<b>971</b>	<b>967</b>
	White	762	788	777	786	782
	African-American	74	84	79	88	96
	Hispanic	16	12	13	17	20
	Asian	89	84	77	76	65
	Native American	7	6	4	4	4
	Unknown	0	0	3	0	0
	<b>Part-Time - Total</b>	<b>90</b>	<b>91</b>	<b>90</b>	<b>94</b>	<b>88</b>
	White	76	79	78	80	73
	African-American	7	3	3	7	5
	Hispanic	2	3	1	1	1
	Asian	5	6	8	6	9
	Native American	0	0	0	0	0
	Unknown	0	0	0	0	0

## EMPLOYEES BY ETHNICITY AND EEO CATEGORY (Continued)

EEO-6 CATEGORY		2004	2005	2006	2007	2008
<b>Secretarial/ Clerical</b>	<b>Full-Time - Total</b>	<b>623</b>	<b>623</b>	<b>616</b>	<b>610</b>	<b>618</b>
	White	549	549	534	538	545
	African-American	53	54	57	55	57
	Hispanic	14	12	12	7	6
	Asian	3	4	5	6	6
	Native American	4	4	6	4	4
	Unknown	0	0	2	0	0
	<b>Part-Time - Total</b>	<b>66</b>	<b>63</b>	<b>67</b>	<b>63</b>	<b>63</b>
	White	62	58	62	58	58
	African-American	4	5	5	5	4
	Hispanic	0	0	0	0	1
	Asian	0	0	0	0	0
	Native American	0	0	0	0	0
	Unknown	0	0	0	0	0
<b>Technical/ Paraprofessional</b>	<b>Full-Time - Total</b>	<b>111</b>	<b>112</b>	<b>120</b>	<b>127</b>	<b>128</b>
	White	89	91	98	103	104
	African-American	16	13	13	15	14
	Hispanic	1	1	2	2	2
	Asian	3	4	4	4	5
	Native American	2	3	3	3	3
	Unknown	0	0	0	0	0
	<b>Part-Time - Total</b>	<b>14</b>	<b>17</b>	<b>17</b>	<b>11</b>	<b>20</b>
	White	7	10	8	6	14
	African-American	6	6	5	3	4
	Hispanic	0	0	0	0	0
	Asian	1	1	4	2	2
	Native American	0	0	0	0	0
	Unknown	0	0	0	0	0
<b>Skilled Craft</b>	<b>Full-Time - Total</b>	<b>139</b>	<b>140</b>	<b>143</b>	<b>145</b>	<b>146</b>
	White	123	123	124	124	123
	African-American	10	12	12	13	14
	Hispanic	3	3	5	5	6
	Asian	2	1	1	1	1
	Native American	1	1	1	2	2
	Unknown	0	0	0	0	0
	<b>Part-Time - Total</b>	<b>0</b>	<b>0</b>	<b>0</b>	<b>0</b>	<b>0</b>
	White	0	0	0	0	0
	African-American	0	0	0	0	0
	Hispanic	0	0	0	0	0
	Asian	0	0	0	0	0
	Native American	0	0	0	0	0
	Unknown	0	0	0	0	0

**EMPLOYEES BY ETHNICITY AND EEO CATEGORY  
(Continued)**

<b>EEO-6 CATEGORY</b>		<b>2004</b>	<b>2005</b>	<b>2006</b>	<b>2007</b>	<b>2008</b>
<b>Service/ Maintenance</b>	<b>Full-Time - Total</b>	<b>428</b>	<b>439</b>	<b>445</b>	<b>435</b>	<b>445</b>
	White	251	248	251	251	258
	African-American	140	151	147	135	132
	Hispanic	18	21	24	28	29
	Asian	12	13	16	15	20
	Native American	7	6	7	6	6
	Unknown	0	0	0	0	0
	<b>Part-Time - Total</b>	<b>8</b>	<b>8</b>	<b>11</b>	<b>10</b>	<b>11</b>
	White	7	7	10	10	11
	African-American	0	0	0	0	0
	Hispanic	1	1	1	0	0
	Asian	0	0	0	0	0
	Native American	0	0	0	0	0
	Unknown	0	0	0	0	0
<b>ALL EMPLOYEES</b>	<b>Full-Time - Total</b>	<b>3,685</b>	<b>3,743</b>	<b>3,770</b>	<b>3,784</b>	<b>3,808</b>
	White	3,017	3,053	3,063	3,082	3,100
	African-American	369	387	385	378	388
	Hispanic	74	78	85	92	95
	Asian	198	199	205	207	200
	Native American	27	26	27	25	25
	Unknown	0	0	5	0	0
	<b>Part-Time - Total</b>	<b>215</b>	<b>222</b>	<b>232</b>	<b>220</b>	<b>228</b>
	White	188	192	200	187	192
	African-American	18	16	15	19	16
	Hispanic	3	4	2	1	4
	Asian	6	10	15	13	16
	Native American	0	0	0	0	0
	Unknown	0	0	0	0	0
<b>TOTAL</b>	<b>3,900</b>	<b>3,965</b>	<b>4,002</b>	<b>4,004</b>	<b>4,036</b>	

Source: Office of Institutional Research & Planning

**FULL-TIME EMPLOYEES BY GENDER**  
*Fall 2004 Through Fall 2008*

	2004	2005	2006	2007	2008
<b>Faculty</b>	<b>1,070</b>	<b>1,077</b>	<b>1,117</b>	<b>1,117</b>	<b>1,117</b>
Male	674	675	693	681	686
Female	396	402	424	436	431
<b>Professionals (Includes Chairpersons)</b>	<b>1,314</b>	<b>1,352</b>	<b>1,329</b>	<b>1,350</b>	<b>1,354</b>
Male	629	644	637	646	637
Female	685	708	692	704	717
<b>Salaried Staff/Hourly</b>	<b>1,301</b>	<b>1,314</b>	<b>1,324</b>	<b>1,317</b>	<b>1,337</b>
Male	468	479	499	497	493
Female	833	835	825	820	844
<b>TOTAL</b>	<b>3,685</b>	<b>3,743</b>	<b>3,770</b>	<b>3,784</b>	<b>3,808</b>
Male	<b>1,771</b>	<b>1,798</b>	<b>1,829</b>	<b>1,824</b>	<b>1,816</b>
Female	<b>1,914</b>	<b>1,945</b>	<b>1,941</b>	<b>1,960</b>	<b>1,992</b>

Source: Office of Institutional Research & Planning

**NUMBER OF FACULTY BY RANK AND TENURE STATUS  
Fall 2004 Through Fall 2008**

	2004		2005		2006		2007		2008	
	Tenured/ Track	Non- Tenure Track	Tenured/ Track	Non- Tenure Track	Tenured/ Track	Non- Tenure Track	Tenured/ Track	Non- Tenure Track	Tenured/ Track	Non- Tenure Track
<b>Full-Time</b>										
Professor	355	8	344	12	358	9	367	11	370	12
Associate Professor	289	19	295	20	302	24	326	25	301	27
Assistant Professor	181	104	188	99	199	105	304	112	180	122
Instructor	0	113	0	118	0	119	119	118	0	105
Lecturer	0	1	0	1	0	1	1	1	0	0
<b>Total Full-Time Faculty</b>	<b>825</b>	<b>245</b>	<b>827</b>	<b>250</b>	<b>859</b>	<b>258</b>	<b>1,117</b>	<b>1,117</b>	<b>851</b>	<b>266</b>
<b>Total Part-Time Faculty</b>	<b>5</b>	<b>19</b>	<b>5</b>	<b>28</b>	<b>4</b>	<b>29</b>	<b>33</b>	<b>32</b>	<b>6</b>	<b>30</b>
<b>Grand Total</b>	<b>830</b>	<b>264</b>	<b>832</b>	<b>278</b>	<b>863</b>	<b>287</b>	<b>1,150</b>	<b>1,149</b>	<b>857</b>	<b>296</b>
		<b>1,094</b>		<b>1,110</b>		<b>1,150</b>		<b>1,149</b>		<b>1,153</b>

*Note: Data include regular faculty (active or on sabbatical leave) at the Newark Campus and the Associate in Arts Program. Visiting faculty are excluded.*

Source: Office of Institutional Research & Planning



**TENURE STATUS AMONG FULL-TIME TENURE TRACK FACULTY**  
**Fall 2004 Through Fall 2008**

	2004		2005		2006		2007		2008	
	Tenured/ Eligible	% Tenured	Tenured/ Eligible	% Tenured	Tenured/ Eligible	% Tenured	Tenured/ Eligible	% Tenured	Tenured/ Eligible	% Tenured
<b>Professor</b>	355/355	100.0	344/344	100.0	358/358	100.0	367/367	100.0	370/370	100.0
<b>Associate Professor</b>	286/289	99.0	288/295	97.6	296/302	98.0	293/297	98.7	298/301	99.0
<b>Assistant Professor</b>	0/181	0.0	0/188	0.0	0/199	0.0	0/186	0.0	0/180	0.0
<b>Total</b>	<b>641/825</b>	<b>77.7</b>	<b>632/827</b>	<b>76.4</b>	<b>654/859</b>	<b>76.1</b>	<b>660/850</b>	<b>77.6</b>	<b>668/851</b>	<b>78.5</b>

*Key: % Tenured = # Tenured/# Eligible \* 100. University policy is to grant tenure at time of promotion to Associate Professor.*

*If promotion is not achieved, faculty member is terminated, so there are no tenured faculty at the Assistant Professor level.*

*Note: Counts include regular faculty (active or on sabbatical leave) on the Newark campus and the Associate in Arts Program. Visiting faculty are excluded.*

Source: Office of Institutional Research & Planning

**AVERAGE TOTAL COMPENSATION OF FULL-TIME FACULTY BY RANK**  
**Academic Year 2004-05 Through 2008-09**

	2004-05		2005-06		2006-07		2007-08		2008-09	
	Average Comp. \$	% Increase From Previous Year	Average Comp. \$	% Increase From Previous Year	Average Comp. \$	% Increase From Previous Year	Average Comp. \$	% Increase From Previous Year	Average Comp. \$	% Increase From Previous Year
<b>Professor</b>	141,385	5.9	147,516	4.3	154,733	4.9	160,932	4.0	165,800	3.1
<b>Associate Professor</b>	101,880	4.5	106,202	4.2	109,358	3.0	112,828	3.2	116,423	3.2
<b>Assistant Professor</b>	83,609	3.5	86,006	2.9	90,065	4.7	93,262	3.5	99,072	6.2
<b>Instructor</b>	67,805	4.5	69,492	2.5	73,193	5.3	76,568	4.6	80,266	4.5

*Note: Includes regular full-time faculty and chairpersons.*

*Total compensation refers to 9-month equivalent salary plus fringe benefits.*

Source: Office of Institutional Research & Planning/AAUP Annual Survey of Faculty Compensation

**FULL-TIME EMPLOYEES' SALARY  
PRINCIPAL SOURCE OF FUNDING**  
*Fall 2004 Through Fall 2008*

	2004	2005	2006	2007	2008
<b>Faculty</b>	<b>1,070</b>	<b>1,077</b>	<b>1,117</b>	<b>1,117</b>	<b>1,117</b>
Paid Principally from Unrestricted Funds	1,020	1,035	1,072	1,067	1,062
% of Total	95.3%	96.1%	96.0%	95.5%	95.1%
<b>Professionals (Includes Chairpersons)</b>	<b>1,314</b>	<b>1,352</b>	<b>1,329</b>	<b>1,350</b>	<b>1,354</b>
Paid Principally from Unrestricted Funds	1,113	1,155	1,133	1,166	1,196
% of Total	84.7%	85.4%	85.3%	86.4%	88.3%
<b>Salaried Staff/Hourly</b>	<b>1,301</b>	<b>1,314</b>	<b>1,324</b>	<b>1,317</b>	<b>1,337</b>
Paid Principally from Unrestricted Funds	1,201	1,228	1,234	1,226	1,254
% of Total	92.3%	93.5%	93.2%	93.1%	93.8%
<b>TOTAL</b>	<b>3,685</b>	<b>3,743</b>	<b>3,770</b>	<b>3,784</b>	<b>3,808</b>
Paid Principally from Unrestricted Funds	<b>3,334</b>	<b>3,418</b>	<b>3,439</b>	<b>3,459</b>	<b>3,512</b>
% of Total	<b>90.5%</b>	<b>91.3%</b>	<b>91.2%</b>	<b>91.4%</b>	<b>92.2%</b>

*Note: Unrestricted funds represent basic, allocated, and self supporting fund types.*

Source: Office of Institutional Research & Planning

**STATEMENT OF OPERATING ACTIVITIES**  
**FY 04 Through FY 08**  
**(Thousands of Dollars)**

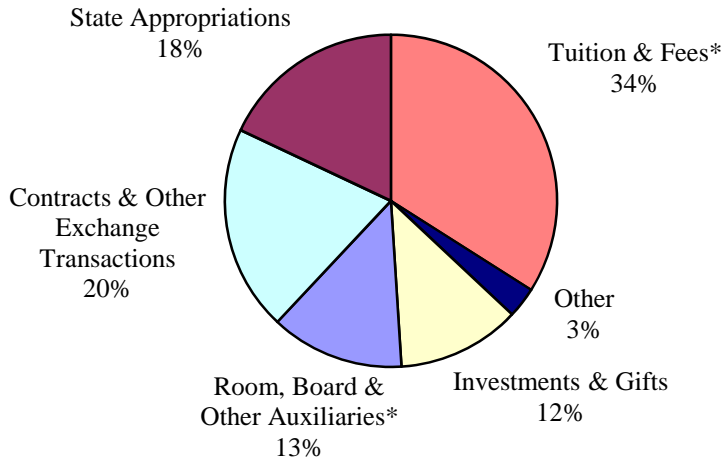
	FY 04 \$	FY 05 \$	FY 06 \$	FY 07 \$	FY 08 \$
<b>OPERATING REVENUE:</b>					
Tuition and fees, net of scholarship & fellowship allowance <sup>(1)</sup>	191,853	204,064	210,971	219,900	235,398
State operating appropriations	102,876	109,140	115,666	122,828	127,166
Contracts & other exchange transactions	109,844	116,087	124,168	129,586	136,432
Room, board & other auxiliaries, net of scholarship & fellowship allowance <sup>(1)</sup>	69,831	73,128	77,568	81,818	88,072
Investments and gifts	66,321	66,337	70,046	78,031	83,526
Other	15,622	16,494	18,735	21,888	21,792
<b>Total operating revenues and support</b>	<b>556,347</b>	<b>585,250</b>	<b>617,154</b>	<b>654,051</b>	<b>692,386</b>
<i><sup>(1)</sup> Scholarship and fellowship allowance</i>					
<b>OPERATING EXPENSES AND TRANSFERS:</b>					
Instruction & academic support	287,149	307,471	316,456	334,193	350,736
Sponsored activities	114,528	121,878	136,555	143,917	150,691
Student services	19,558	19,244	20,725	22,202	24,392
Student aid	4,319	4,851	4,846	6,144	5,722
Institutional	50,280	57,927	51,858	57,985	60,451
Room, board & other auxiliaries	61,743	65,062	73,105	76,209	82,999
Transfers & other	18,770	8,817	13,609	13,401	17,395
<b>Total operating expenses and transfers</b>	<b>556,347</b>	<b>585,250</b>	<b>617,154</b>	<b>654,051</b>	<b>692,386</b>

Source: Assistant Vice President for Finance

# OPERATING REVENUE, EXPENSES AND TRANSFERS

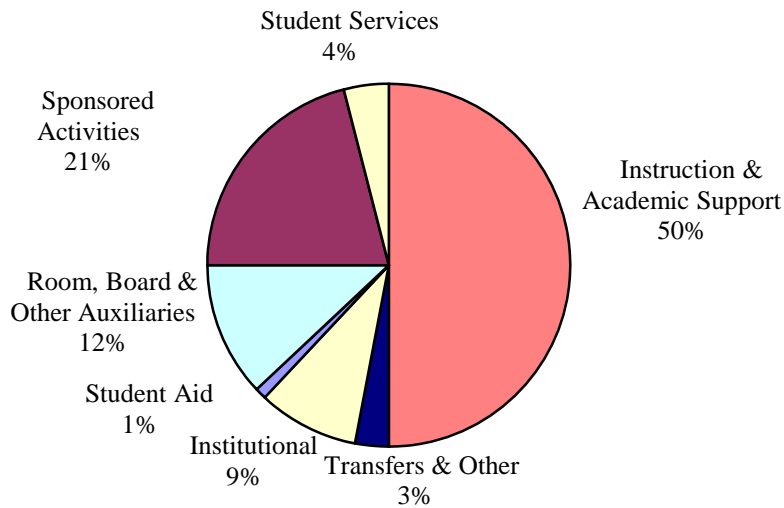
## Fiscal Year 2008

**REVENUE (\$692.4 millions)**



\* Net of Scholarship & Fellowship Allowance

**EXPENSES AND TRANSFERS (\$692.4 millions)**



Source: Assistant Vice President for Finance

**CHANGE IN NET ASSETS**  
***FY 04 Through FY 08***  
**(Thousands of Dollars)**

	FY 04	FY 05	FY 06	FY 07	FY 08
	\$	\$	\$	\$	\$
Net assets at beginning of year	1,399,382	1,559,706	1,665,416	1,830,179	2,000,209
Change in net assets:					
Operating transfers	16,300	6,338	13,507	14,414	18,797
Nonoperating activities:					
Net realized and unrealized gains (losses)	132,319	84,847	130,388	174,134	(89,844)
Contributions for endowment and buildings	26,599	23,384	28,606	14,434	8,985
State capital appropriations	5,000	8,500	7,000	4,600	3,500
Net change in asset retirement obligation liability	--	--	--	(3,093)	(2,972)
Effect of change in adoption of SFAS No. 158	--	--	--	(30,398)	--
Cumulative effect of change in accounting principle	--	--	(4,440)	--	--
Net endowment income and other	(19,894)	(17,359)	(10,298)	(4,061)	(4,601)
Total nonoperating activities	<u>144,024</u>	<u>99,372</u>	<u>151,256</u>	<u>155,616</u>	<u>(84,932)</u>
Net assets at end of year	<u>1,559,706</u>	<u>1,665,416</u>	<u>1,830,179</u>	<u>2,000,209</u>	<u>1,934,074</u>
Percent change from prior year	11%	7%	10%	9%	-3%
Net assets:					
Unrestricted	1,204,929	1,283,941	1,420,511	1,541,474	1,031,166
Temporarily restricted	101,478	116,527	122,034	152,997	593,322
Permanently restricted	<u>253,299</u>	<u>264,948</u>	<u>287,634</u>	<u>305,738</u>	<u>309,586</u>
Total net assets	<u>1,559,706</u>	<u>1,665,416</u>	<u>1,830,179</u>	<u>2,000,209</u>	<u>1,934,074</u>
Endowment and funds invested as endowment:					
Market value	995,900	1,077,100	1,223,200	1,397,500	1,340,100
Percent change from prior year	15%	8%	14%	14%	-4%

Source: Assistant Vice President for Finance

**EXTERNALLY SPONSORED ACTIVITIES**  
(Thousands of Dollars)

College / Unit	FY 2008				FY 2007 Total \$	Percent Change %
	Instruction & Dept. Rsch. \$	Sponsored Research \$	Public Service \$	Total \$		
<b>EXTERNALLY SPONSORED ACTIVITIES:</b>						
Agriculture & Natural Resources	1,983	12,565	8,322	22,870	19,224	19.0
Arts & Sciences	8,079	28,933	2,765	39,777	40,225	(1.1)
Business & Economics	3,079	60	1,596	4,735	4,985	(5.0)
Engineering	3,103	39,779	203	43,085	38,043	13.3
Health Sciences	1,239	664	810	2,713	2,617	3.7
Human Services, Education & Public Policy	6,853	2,207	12,407	21,467	20,498	4.7
Marine & Earth Studies	541	9,094	1,451	11,086	12,021	(7.8)
Institute of Energy Conversion	5	2,046	0	2,051	1,858	10.4
Delaware Biotechnology Institute	2,175	7,940	631	10,746	7,829	37.3
Center for International Studies	1,325	0	473	1,798	2,945	(38.9)
Other	3,294	680	2,068	6,042	5,878	2.8
<b>TOTAL EXTERNALLY SPONSORED ACTIVITIES</b>	<b>31,676</b>	<b>103,968</b>	<b>30,726</b>	<b>166,370</b>	<b>156,123</b>	<b>6.6</b>

Source: Assistant Vice President for Finance

**TUITION, FEES, ROOM AND BOARD CHARGES PER YEAR  
AND THEIR ANNUAL RATE OF INCREASE  
1998-99 Through 2008-09**

Year	TUITION AND FEES <sup>1</sup>			BOARD <sup>2</sup>		TRADITIONAL DOUBLE ROOM <sup>3</sup>		
	Resident	Nonresident						
	\$	% Incr.	\$	% Incr.	\$	% Incr.	\$	% Incr.
98-99	4,716	3.1	12,716	4.2	2,252	3.3	2,700	4.2
99-00	4,858	3.0	13,228	4.0	2,322	3.1	2,810	4.1
00-01	5,004	3.0	13,754	4.0	2,392	3.0	2,920	3.9
01-02	5,290	5.7	14,380	4.6	2,470	3.3	3,064	4.9
02-03 <sup>4</sup>	5,760	8.9	15,290	6.3	2,590	4.9	3,232	5.5
03-04	6,498	12.8	16,028	4.8	2,690	3.9	3,428	6.1
04-05	6,954	7.0	16,640	3.8	2,790	3.7	3,668	7.0
05-06	7,318	5.2	17,474	5.0	2,900	3.9	3,924	7.0
06-07	7,740	5.8	18,450	5.6	3,030	4.5	4,336	10.5
07-08	8,150	5.3	19,400	5.1	3,200	5.6	4,748	9.5
<b>08-09</b>	<b>8,646</b>	<b>6.1</b>	<b>21,126</b>	<b>8.9</b>	<b>3,350</b>	<b>4.7</b>	<b>5,128</b>	<b>8.0</b>

<sup>1</sup> Fall 2008 fees include: Student Health - \$466; Student Union - \$220; and Comprehensive Fee - \$180.

<sup>2</sup> The board charge reflects the largest number of meals available (19 per week).

<sup>3</sup> Room rates include Winter Session at no additional charge.

<sup>4</sup> 2002-03 tuition includes a \$120 mid-year increase for the Spring semester.

Source: Office of Institutional Research & Planning



## STUDENT CHARGES AT THE UNIVERSITY OF DELAWARE AND ADMISSIONS COMPETITORS

	TUITION & FEES									
	Resident					Nonresident				
	04-05	05-06	06-07	07-08	08-09	04-05	05-06	06-07	07-08	08-09
<b>Univ. Of Delaware</b>	<b>6,954</b>	<b>7,318</b>	<b>7,740</b>	<b>8,150</b>	<b>8,646</b>	<b>16,640</b>	<b>17,474</b>	<b>18,450</b>	<b>19,400</b>	<b>21,126</b>
Penn State Univ.	10,856	11,508	12,164	12,844	13,706	20,784	21,744	22,712	23,712	24,940
Rutgers Univ.	8,564	9,221	9,958	10,686	11,540	15,599	16,819	18,463	19,854	21,488
Univ. of Maryland	7,540	7,961	8,046	7,969	8,005	18,840	20,285	21,485	22,208	23,076
Univ. of Virginia	6,600	7,180	8,035	8,690	9,490	22,641	23,924	25,959	27,705	29,572
Va. Polytech. Inst.	5,838	6,378	6,973	7,397	8,198	16,531	17,717	18,929	19,605	20,655

	ROOM & BOARD									
	Resident					Nonresident				
	04-05	05-06	06-07	07-08	08-09	04-05	05-06	06-07	07-08	08-09
<b>Univ. Of Delaware</b>	<b>6,458</b>	<b>6,824</b>	<b>7,366</b>	<b>7,948</b>	<b>8,478</b>	<b>6,458</b>	<b>6,824</b>	<b>7,366</b>	<b>7,948</b>	<b>8,478</b>
Penn State Univ.	6,740	7,060	7,400	7,750	8,270	6,740	7,060	7,400	7,750	8,270
Rutgers Univ.	8,357	8,838	9,312	9,762	10,232	8,357	8,838	9,312	9,762	10,232
Univ. of Maryland	7,791	8,075	8,562	8,854	9,109	7,791	8,075	8,562	8,854	9,109
Univ. of Virginia	5,960	6,389	6,909	7,435	7,820	5,960	6,389	6,909	7,435	7,820
Va. Polytech. Inst.	4,224	4,456	4,766	5,106	5,476	4,224	4,456	4,766	5,106	5,476

	TOTAL INSTITUTIONAL COSTS									
	Resident					Nonresident				
	04-05	05-06	06-07	07-08	08-09	04-05	05-06	06-07	07-08	08-09
<b>Univ. Of Delaware</b>	<b>13,412</b>	<b>14,142</b>	<b>15,106</b>	<b>16,098</b>	<b>17,124</b>	<b>23,098</b>	<b>24,298</b>	<b>25,816</b>	<b>27,348</b>	<b>29,604</b>
Penn State Univ.	17,596	18,568	19,564	20,594	21,976	27,524	28,804	30,112	31,462	33,210
Rutgers Univ.	16,921	18,059	19,270	20,448	21,772	23,956	25,657	27,775	29,616	31,720
Univ. of Maryland	15,331	16,036	16,608	16,823	17,114	26,631	28,360	30,047	31,062	32,185
Univ. of Virginia	12,560	13,569	14,944	16,125	17,310	28,601	30,313	32,868	35,140	37,392
Va. Polytech. Inst.	10,062	10,834	11,739	12,503	13,674	20,755	22,173	23,695	24,711	26,131

Source: Data obtained through the Office of Institutional Research & Planning Survey of Undergraduate Charges

## BUILDING INVENTORY

	Newark	All Sites
Academic		
Major Classrooms & Laboratories	47	54
Farm/Auxiliary	85	130
Other Special Use	33	39
Physical Education	7	7
<b>Total Academic</b>	<b>172</b>	<b>230</b>
Student Residence and Service		
Residence Halls (Major Residence Hall complexes = 11)	47	50
Other Housing	65	95
Dining Halls	5	5
Student Activities	18	18
<b>Total Student Residence &amp; Service</b>	<b>135</b>	<b>168</b>
Administrative		
General Services	25	29
Plant Operations & Services	20	23
<b>Total Administrative</b>	<b>45</b>	<b>52</b>
<b>TOTAL BUILDINGS</b>	<b>352</b>	<b>450</b>

Source: General Accounting  
(Data as of September 1, 2008)

## LAND INVENTORY

<b>ACREAGE OWNED</b>	
New Castle County	
Newark Campus Total	968
Wilmington	34
Other	168
<b>Total New Castle County</b>	<b>1,170</b>
Kent County	
Dover	5
Clayton	297
<b>Total Kent County</b>	<b>302</b>
Sussex County	
Georgetown Substation	347
Rehoboth	141
Lewes	69
Indian River	10
<b>Total Sussex County</b>	<b>567</b>
<b>TOTAL ACREAGE</b>	<b>2,039</b>

Source: General Accounting  
(Data as of September 1, 2008)

## UNIVERSITY LIBRARY

### Facilities and Services

The University of Delaware Library includes the Morris Library, where the main collection is housed, three branch libraries located in Newark, the Agriculture Library, the Chemistry Library, and the Physics Library and a fourth branch library, the Marine Studies Library in Lewes, Delaware.

The collections of the University of Delaware Library parallel the University's academic interests and support all disciplines. Books, periodicals, electronic journals, databases, microforms, government publications, and software, maps, manuscripts, media, and Internet access provide a major academic resource for the University of Delaware, the surrounding community, the State of Delaware, and the nation.

The University of Delaware Library is a depository library for U.S. government publications, a patent depository for U.S. patents and a repository for State of Delaware publications. Library staff members provide a wide range of services including reference assistance, circulation, interlibrary loan, instructional programs, assistance to users with disabilities, and assistance to faculty, staff and students in the Student Multimedia Design Center.

The Morris Library, the main library where the main collection is housed, seats over 3,000 persons. The University of Delaware Library is a member of the Association of Research Libraries, the Center for Research Libraries, CIRLA (the Chesapeake Information and Research Library Alliance), and PALINET through which it is connected online to OCLC, the Online Computer Library Center.

For Library hours, call 302-831-BOOK or check the Library Web Site at:  
[www.udel.edu/library](http://www.udel.edu/library)

### Size of Collections (2007/08)

Books and bound periodicals.....	over 2,700,000
Microforms.....	over 3,400,000
Databases (titles in Databases list).....	over 260
Electronic and print journals including newspapers to which the Library provides access.....	over 30,000
Other resources (DVD, maps, etc.).....	over 600,000
Linear feet of manuscripts and archives.....	over 5,100
Subject guides to Internet resources.....	over 120

### Use Statistics (2007/08)

Items loaned.....	over 380,000
Items used on site.....	over 137,000
Individuals entering the Morris Library.....	over 800,000
Virtual visits on Library website.....	over 1,700,000

### Electronic Library Resources

The University of Delaware Library provides online electronic access to networked and digital information including: journal article references and abstracts; full-text electronic articles; a full-text encyclopedia; government information; thousands of electronic journals; maps and many other items. Databases provide access to more than 260 networked databases for University of Delaware faculty, students, and staff. The Library Web Site is accessible at:

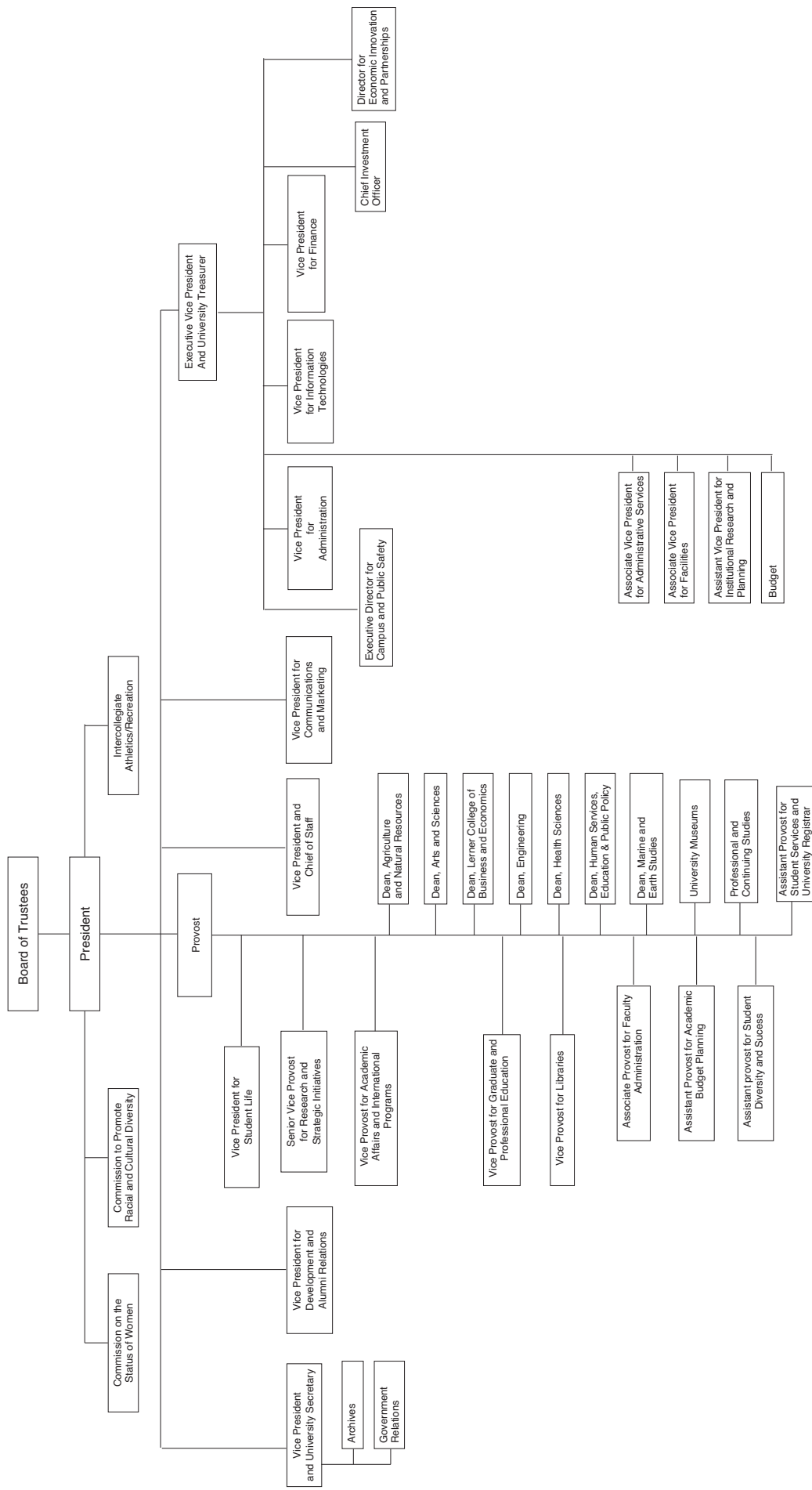
[www.lib.udel.edu](http://www.lib.udel.edu)

DELICAT is the University of Delaware Library online catalog and contains information about the library collection and also provides links to electronic journals and other resources. DELICAT may be accessed from anywhere in the world via the Web.

The Library Web Site serves as a gateway research tool and provides gateway access to electronic resources on the Web including electronic access to resources that are locally licensed for University of Delaware faculty, students, and staff only. The Library Web Site is also available from the University of Delaware Web Site ([www.udel.edu](http://www.udel.edu)).

In fall 2008, the University of Delaware Library was one of the first libraries in the nation to implement WorldCat Local, the world's largest network of library-based content and services. WorldCat Local encompasses the holding of over 10,000 libraries across the world, including the University of Delaware Library. Now, in a single search, users can easily identify a broad array of high-quality research materials. With a simple click, users can change the default interface to German, Spanish, French, Dutch, or Chinese. WorldCat Local has been enthusiastically received by students.

The Morris Library provides seating for more than 3,000 persons; wireless access in most areas; special purpose space for computer-based systems; more than 200 computer workstations accessible to users, more than 200 laptop connections for University of Delaware users to connect personal laptops (including all graduate student carrels); the Student Multimedia Design Center; a current periodical reading room; self-service photocopiers; microform reader/printers including a digital microform workstation; a large reserve reading room; small research studies for which faculty may request use; a GIS workstation; special equipment and areas to assist users with disabilities; a media area and viewing room; small group study rooms for student use; a handsome Special Collections area including an exhibition gallery and a reading room with a controlled environmental system for rare materials; and many other areas and services.



# **UNIVERSITY OF DELAWARE REGIONAL, NATIONAL AND SPECIALIZED ACCREDITORS**

Accreditation Board for Engineering and Technology  
Accreditation Association for Ambulatory Health Care, Inc.  
Administration on Developmental Disabilities  
American Association of Health Education  
American Association of School Librarians  
American Chemical Society's Committee on Professional Training  
American Council on the Teaching of Foreign Languages  
American Dietetic Association  
American Library Association  
American Physical Therapy Association  
American Psychological Association  
Association for Childhood Education International  
Association for Educational Communications and Technology  
Association of Small Business Development Centers  
Association of University Centers on Disabilities  
Association to Advance Collegiate Schools of Business International  
Commission on Accreditation of Allied Health Education Programs  
Commission on Accreditation of Physical Therapy Education  
Commission on Collegiate Nursing Education  
Commission on the Accreditation of Athletic Training Education Programs  
Commission on the Accreditation for Dietetics Education (CADE)  
Council for Exceptional Children  
Council for Standards for Human Services Education  
Educational Leadership Constituent Council  
Engineering Accreditation Commission of Accreditation Board for Engineering and Technology  
Institute of Food Technologists  
International Association of Counseling Services, Inc.  
International Reading Association  
Joint Review Committee for Athletic Training  
Middle States Commission on Higher Education  
National Accrediting Agency for Clinical Laboratory Sciences  
National Association for Sport and Physical Education  
National Association for the Education of Young Children  
National Association of School Psychologists  
National Association of Schools of Music  
National Association of Schools of Public Affairs and Administration  
National Council for Accreditation of Teacher Education  
National Council for the Social Studies  
National Council of Teachers of English  
National Council of Teachers of Mathematics  
National League for Nursing Accrediting Commission  
National Science Teachers Association  
Teachers of English to Speakers of Other Languages, Inc.  
Technology Accreditation Commission of Accreditation Board for Engineering and Technology

AN EQUAL OPPORTUNITY/AFFIRMATIVE ACTION EMPLOYER—The University of Delaware is committed to assuring equal opportunity to all persons and does not discriminate on the basis of race, color, gender, religion, ancestry, national origin, sexual orientation, veteran status, age, or disability in its educational programs, activities, admissions, or employment practices as required by Title IX of the Education Amendments of 1972, Title VI of the Civil Rights Act of 1964, the Rehabilitation Act of 1973, the Americans with Disabilities Act, other applicable statutes and University policy. Inquiries concerning these statutes and information regarding campus accessibility should be referred to the Affirmative Action Officer, 305 Hulliher Hall, (302) 831-2835 (voice), (302) 831-4563 (TDD).