



FACTS & FIGURES

2006 - 2007

Office of Institutional Research and Planning

Michael F. Middaugh, Assistant Vice President for Institutional Research and Planning

Dale W. Trusheim, Associate Director of Institutional Research and Planning

Heather A. Kelly, Assistant Director of Institutional Research and Planning

Karen A. DeMonte, Senior Institutional Research Analyst

Kathleen F. Collison, Senior Institutional Research Analyst

Allison M. Walters, Institutional Research Analyst

Margaret J. Brumit, Records Analyst/Coordinator

Patricia E. Kelly, Records Technician

Telephone: (302) 831-2021

FAX: (302) 831-8530

Email: irp@udel.edu

Email Addresses:

middaugh@udel.edu

trusheim@udel.edu

hkelly@udel.edu

kdemonte@udel.edu

katc@udel.edu

awalters@udel.edu

mbrumit@udel.edu

pek@udel.edu

UD Homepage on the Internet:

<http://www.udel.edu/>

Institutional Research Homepage on the Internet:

<http://www.udel.edu/IR/>

MEMBERS OF THE BOARD OF TRUSTEES

As of October 2006

Ex-Officio Members

Ruth Ann Minner, *Governor of the State of Delaware*
Jean W. Allen, *President of the State Board of Education*
William H. Narvel, Jr., *Master of the State Grange*
David P. Roselle, *President of the University*

Officers of the Board

Howard E. Cosgrove, *Chairman*
Robert A. Fischer, Jr., *Vice Chairman*
Robert W. Gore, *Vice Chairman*
Joan Thompson Mobley, *Secretary-Treasurer*

Elected and Appointed Members

Thomas J. Burns	James P. Neal
Irwin G. Burton III	Christopher H. Schell
R.R.M. Carpenter III	A. Gilchrist Sparks III
Charles M. Cawley	Chelina N. Tirrell
Richard S. Cordrey	Everett C. Toomey
Patricia A. DeLeon	H. Wesley Towers, Jr.
Scott A. Green	P. Coleman Townsend, Jr.
Ilona E. Holland	Sherman L. Townsend
Dennis E. Klima	John E. Wallace, Jr.
John A. Krol	Mary Jane Willis
Cynthia Primo Martin	Jacquelyn O. Wilson

Honorary Counselor

Andrew B. Kirkpatrick, Jr.

Trustees *Emeriti*

Werner C. Brown	Sally H. Higgins
Catherine B. Flickinger	Robert F. Rider

OFFICERS OF THE ADMINISTRATION

DAVID P. ROSELLE, President

DANIEL RICH, Provost

DAVID E. HOLLOWELL, Executive Vice President and Treasurer

MAXINE COLM, Vice President for Administration

SUSAN J. FOSTER, Vice President for Information Technologies

PIERRE D. HAYWARD, Vice President and University Secretary

ROBERT R. DAVIS, Vice President for Development and Alumni Relations

2006-07 FACTS & FIGURES

Table of Contents

	<u>Page No.</u>
At A Glance	1
New University Initiatives	3
Synopsis of Undergraduate Degree Programs and Majors	5
Synopsis of Graduate Degree Programs	7
Twenty-Five Most Popular Undergraduate Majors	9
Students	
SAT Scores By Residence for New Freshmen	10
Freshman Admissions Activity	11
- Trends in Freshman Admissions Activity (figure)	11
Regional Distribution of Admissions Applications and Paid Deposits	12
- Applications and Paid Deposits (figure)	12
Enrollment By College and Time Status	13
- Trends in Total Enrollment (figure)	16
Ethnicity of Students By Time Status	17
Undergraduate Enrollment By Gender	19
Graduate Enrollment By Gender	20
Enrollment By Residence Status	21
Attrition By Year of Entrance	23
- Trends in Freshman to Sophomore Retention (figure)	23
Graduation Rates	24
- Trends in Graduation Rates (figure)	24
Degrees Granted By College and Level	25
Employment and Educational Status of Baccalaureates	26
Personnel	
Employees By Ethnicity and EEO Category	27
Full-Time Employees By Gender	30
Number of Faculty By Rank and Tenure Status	31
Tenure Status Among Tenure-Track Faculty	32
Average Faculty Compensation	33
Full-Time Employees' Salary Principal Source of Funding	34

Table of Contents, continued

	<u>Page No.</u>
Finances	
Statement of Operating Activities.....	35
Operating Revenue, Expenses and Transfers (figure)	36
Change in Net Assets.....	37
Externally Sponsored Activities	38
Tuition, Fees, Room and Board Charges	39
Student Charges at Delaware and Admissions Competitors.....	40
Facilities	
Building Inventory	41
Land Inventory.....	42
University Library.....	43

University of Delaware Organizational Chart



2006-07

AT A GLANCE

History/Location: The University of Delaware, a state assisted institution, is a Land Grant, Sea Grant, Space Grant, Urban Grant, Carnegie Doctoral/Research Extensive University. The University, with origins in 1743, was chartered by the State of Delaware in 1833. A Women's College was opened in 1914, and in 1945 UD became permanently coeducational. The main campus is located in Newark, Delaware, a suburban community of nearly 30,000, situated midway between Philadelphia and Baltimore. Courses are also offered at the Wilmington campus and at other locations throughout the State, including Dover, Georgetown, Milford, and Lewes.

Academic Schools, Programs, and Degrees: Agriculture and Natural Resources; Arts and Sciences; Business and Economics; Engineering; Health Sciences; Human Services, Education and Public Policy; and Marine and Earth Studies. UD offers 126 undergraduate programs, 82 master's programs, and 39 doctoral programs. In 2005-06, UD awarded 3,683 bachelor's degrees, 696 master's degrees, and 222 doctoral degrees. Doctoral and professional degrees were awarded in Agriculture, Business and Economics, Education, Engineering, Individual and Family Studies, Marine Studies, Nursing, Urban Affairs and Public Policy, and a range of Arts & Sciences disciplines (including Art History, Biological Sciences, Chemistry and Biochemistry, Computer and Information Sciences, English, Geology, History, Linguistics, Mathematical Sciences, Physical Therapy, Physics, Political Science and International Relations, Psychology, and Sociology).

Faculty: In 2006-07, there are 1,117 full-time faculty positions. Approximately 80% of full-time tenure-eligible faculty are tenured and over 80% of full-time faculty hold the doctorate or terminal professional degree in their field. Average total compensation in 2006-07 is \$154,733 for Full Professors, \$109,358 for Associate Professors, and \$90,065 for Assistant Professors.

Enrollment: Fall 2006 enrollment totals 20,380 which include 15,849 undergraduates, 3,446 graduate students, and 1,085 professional and continuing studies students. 14,992 (95%) of undergraduate and 2,540 (74%) of graduate students are enrolled on a full-time basis. 42% of undergraduate students are male. 60% of undergraduate and 68% of graduate students are from out-of-state. 5.6% of undergraduate and 4.6% of graduate students are African-American. Approximately 50% of undergraduate students live in residence halls.

Admissions/Retention: 3,259 first-time freshmen enrolled in Fall 2006. 31% of all admitted freshmen applicants were enrolled. Average SAT score (critical reading plus mathematics) for enrolled freshmen was 1194. On average, 90% of freshmen return for their sophomore year and more than 3 out of 4 students graduate within five years.

Costs: Annual full-time undergraduate tuition and fees for 2006-07 are \$7,740 (in-state) and \$18,450 (out-of-state). Room and board is \$7,366.

Finances: For Fiscal Year 2006, Total Operating Revenues were \$617.2 million, including \$115.7 million for State Appropriations. Total Operating Expenses and Transfers were \$617.2 million. Externally Funded Activity totaled \$148.8 million.

Institutional Affiliations: UD is a member of the National Association of State Universities and Land Grant Colleges (NASULGC). In athletics, UD began NCAA Division I competition in 1973 for men and 1982 for women. UD competes in Division I-AA for Football and in Division I-A for all other sports. UD is a member of the Atlantic 10 Football Conference and the Colonial Athletic Association for all other sports.

NEW UNIVERSITY INITIATIVES

Foreign Languages and Literatures Building Renovation

In July 2004, the University began renovating the two former fraternity houses east of Recitation Hall to become the future home for the department of Foreign Languages and Literatures. The \$8 million conversion includes a small infill addition to serve as the connecting link between the two facilities, housing an elevator and a centralized entryway for the new facility. Completed in January 2006, the newly renovated facility is named Jastak-Burgess Hall and includes space for the department's administrative offices, its Media Language Laboratory, 60 faculty offices, and approximately 18 part-time faculty spaces. Additionally, the facility houses a large conference room usable by the University community. This project was funded through gifts and University resources.

Center for the Arts

The \$48 million Center for the Arts, constructed off Orchard Road in what was the Amy E. du Pont Music Building parking lot, provides new performance spaces for music and theatre. The 92,000 gross-square-foot performing arts facility also includes a 200-seat recital hall, a 300-seat orchestra hall, a 450 seat proscenium theatre and 32 music practice rooms. The architect for the Center for the Arts is Ayers Saint Gross of Baltimore. This project, which opened in August 2006, was funded through generous donations and University resources.

New Residence Hall Complex

The University has completed three new buildings in a new 1,000-bed residence hall complex. These buildings replaced the 12 Pencader dormitories and three commons buildings that housed 750 students between Clayton Hall and Christiana Towers on the University's Laird Campus. The new buildings, which replicate the feeling of the central campus, are needed to address several issues associated with the 33-year old Pencader complex. Work on the \$72 million project began in spring 2004, with the construction of the 500-bed George Read Hall. Two more buildings, Thomas McKean Hall and James Smith Hall, each housing 250 students, opened in August of 2006. An eight-foot-wide pedestrian footbridge connects the area to Ray Street. This project was funded through University resources.

Brown Laboratory

The University has begun a major renovation of Brown Laboratory. Brown Lab was constructed in 1937, and houses the Department of Chemistry and Biochemistry. The south wing of Brown Lab was renovated in 1994-95 at a cost of \$6.5 million. The north and west wings, however, contain out-of-date laboratory, research, and support space, and require extensive renovation at an estimated cost in excess of \$27 million. Given the central role that the Department of Chemistry and Biochemistry plays in supporting a number of sectors in Delaware's economy, modern and functional research facilities are not only an investment in the University, but in the State's fiscal health as well. This project is funded through University and State resources and will be completed in the fall of 2007.

Carvel Education Center

The University has constructed the Carvel Education Center in Georgetown which provides the College of Agriculture and Natural Resources with an opportunity to add programs and program enhancements. This \$7.6 million facility offers citizens of southern Delaware the opportunity to gather and learn in a first class educational facility. Completed in December 2005, the Center provides three large meeting rooms with a total seating capacity of approximately 300 and one thirty seat ITV studio with down and uplink capabilities for programs such as the Master Gardener Program, and State and County Extension programs. The Center also includes 34 staff and graduate student offices. This project was funded through gifts, University and State resources.

Residence Hall Projects

The University is planning a major project that will add 600 more residence hall beds on the Laird Campus in order to provide the flexibility to renovate the 1960's residence halls on the east and west campuses. The project will start in early 2007 and be completed by 2012.

SYNOPSIS OF UNDERGRADUATE DEGREE PROGRAMS AND MAJORS

<p>COLLEGE OF AGRICULTURE AND NATURAL RESOURCES</p>	<p><i>Bachelor of Science</i></p>	<p>Agriculture and Natural Resources Agricultural Education Animal Science (includes Preveterinary Medicine, Animal Biotechnology, Applied Animal Science, and General Animal Science) Engineering Technology (includes Applied Electronics and Controls, and Construction Technology and Technical Management) Entomology Environmental Soil Science Food and Agribusiness Management (includes Food Marketing)</p>	<p>Food Business Management and Technology Food Science and Technology (includes Food Science and Food Technology) Landscape Horticulture Natural Resource Management Plant Protection Plant Science Resource Economics (includes Environmental Economics) Statistics Wildlife Conservation</p>
<p>COLLEGE OF ARTS AND SCIENCES</p>	<p><i>Bachelor of Arts</i></p>	<p>Anthropology Anthropology Education Art Art Conservation (includes Collections Care and Pre-Graduate Study) Art History Biological Sciences Biological Sciences Education Chemistry Chemistry Education Communication (includes Interpersonal, Mass Communication) Comparative Literature Computer Science Continental European Studies Criminal Justice East Asian Studies Economics (includes Applied Economics, Economic Theory and Econometrics) Economics Education English (includes Business/Technical Writing, Creative Writing, Drama, Ethnic/Cultural Studies, Film, Journalism) English Education Foreign Languages and Literatures (includes Ancient Greek and Roman Studies, French Studies, German Studies, Italian Studies, Russian Studies, Spanish Studies, Three Languages) French Education French/Political Science Geography Geography Education German Education German/Political Science</p>	<p>History (includes American History, European History, Global History, Journalism, Policy History) History Education History/Classics History/French History/German History/Russian History/Spanish International Relations Italian Education Latin American Studies Latin Education (includes Classics) Mathematical Sciences Mathematics Education Music (includes Music Management Studies) Philosophy Physics Physics Education Political Science (includes American Politics, Global Studies, Politics and Journalism, Public Law, Public Policy and Administration) Political Science Education Psychology Psychology Education Sociology (includes Data Analysis, Emergency and Environmental Management, Health Services, Law and Society, and Social Welfare) Sociology Education Spanish Education Spanish/Political Science Theatre Production Women's Studies</p>
	<p><i>Bachelor of Arts in Liberal Studies</i></p>	<p>Liberal Studies</p>	
	<p><i>Bachelor of Fine Arts</i></p>	<p>Fine Arts</p>	<p>Visual Communications</p>
	<p><i>Bachelor of Music</i></p>	<p>Applied Music--Instrumental (includes Bassoon, Clarinet, Double Bass, Early Instrumental Music, Euphonium, Flute, Guitar, Harpsichord, Horn, Oboe, Percussion, Saxophone, Trombone, Trumpet, Violin, Violoncello, Viola) Applied Music--Piano Applied Music--Voice</p>	<p>Music Theory/Composition Music Education--Instrumental (includes Bassoon, Clarinet, Double Bass, Euphonium, Flute, Guitar, Horn, Oboe, Percussion, Piano, Saxophone, Trombone, Trumpet, Tuba, Violin, Violoncello, Viola) Music Education--General/Choral (includes Piano, Voice)</p>
	<p><i>Bachelor of Science</i></p>	<p>Biochemistry Biological Sciences (includes Biotechnology, Cellular and Molecular Biology and Genetics, Ecology and Organismic Biology) Chemistry (includes Environmental Chemistry) Computer Science Environmental Science</p>	<p>Information Systems Mathematical Sciences Mathematics and Economics Physics (includes Astronomy/Astrophysics, Chemical Physics, Materials Physics)</p>

ALFRED LERNER COLLEGE OF BUSINESS AND ECONOMICS	<i>Bachelor of Arts</i>	Economics (includes Applied Economics, Economic Theory and Econometrics)	
	<i>Bachelor of Science</i>	Accounting Economics (includes Applied Economics, Economic Theory and Econometrics) Finance International Business Studies	Management Information Systems Management Marketing Operations Management
COLLEGE OF ENGINEERING	<i>Bachelor of Chemical Engineering</i>	Chemical Engineering	
	<i>Bachelor of Civil Engineering</i>	Civil Engineering	
	<i>Bachelor of Computer Engineering</i>	Computer Engineering	
	<i>Bachelor of Electrical Engineering</i>	Electrical Engineering	
	<i>Bachelor of Environmental Engineering</i>	Environmental Engineering	
	<i>Bachelor of Mechanical Engineering</i>	Mechanical Engineering	
COLLEGE OF HEALTH SCIENCES	<i>Bachelor of Science</i>	Applied Nutrition Athletic Training Dietetics Exercise Science (includes Biomechanics, Exercise Physiology) Health Behavior Science (includes Fitness Management and Leisure Service Management)	Health and Physical Education Health Studies Medical Technology Nutritional Sciences Sport Management
	<i>Bachelor of Science in Nursing</i>	Nursing	Baccalaureate for the Registered Nurse (B.R.N.)
COLLEGE OF HUMAN SERVICES, EDUCATION AND PUBLIC POLICY	<i>Bachelor of Arts in Educational Studies</i>	Educational Studies	
	<i>Bachelor of Science in Education</i>	Elementary Teacher Education	
	<i>Bachelor of Science</i>	Apparel Design Early Childhood Education Fashion Merchandising Hotel, Restaurant and Institutional Management	Human Services (Clinical Services, Administration & Family Policy) Human Services, Education and Public Policy Leadership
COLLEGE OF MARINE AND EARTH STUDIES	<i>Bachelor of Arts</i>	Earth Science Education	Geology
	<i>Bachelor of Science</i>	Geology	

SYNOPSIS OF GRADUATE DEGREE PROGRAMS

COLLEGE OF AGRICULTURE AND NATURAL RESOURCES	<i>Master of Arts</i>	Agricultural and Technology Education	
	<i>Master of Science</i>	Agriculture and Resource Economics Animal Science Entomology and Applied Ecology Food Science Operations Research	Plant and Soil Sciences Public Horticulture Statistics Wildlife Ecology
	<i>Doctor of Philosophy</i>	Animal Science Entomology and Applied Ecology	Operations Research Plant and Soil Sciences
COLLEGE OF ARTS AND SCIENCES	<i>Master of Arts</i>	Art Art History Chemistry and Biochemistry Communication Criminology Early American Culture English Foreign Languages and Literatures Foreign Languages and Pedagogy	Geography History Liberal Studies Linguistics Political Science and International Relations Psychology Sociology
	<i>Master of Fine Arts</i>	Fine Arts	Theatre
	<i>Master of Music</i>	Music (includes Performance, Teaching and Composition)	
	<i>Master of Science</i>	Applied Mathematics Art Conservation Biological Sciences Biomechanics and Movement Science (interdisciplinary)	Chemistry and Biochemistry Computer Science Geography Mathematics Physics
	<i>Doctor of Philosophy</i>	Applied Mathematics Art History Biological Sciences Biological Sciences/Business Administration Biomechanics and Movement Science (interdisciplinary) Chemistry and Biochemistry Climatology Computer Science Criminology	English History Linguistics Mathematics Physics Political Science and International Relations Preservation Studies Psychology Sociology
	<i>Doctor of Physical Therapy</i>	Physical Therapy	
ALFRED LERNER COLLEGE OF BUSINESS AND ECONOMICS	<i>Master of Arts</i>	Economics	Economics and Entrepreneurship for Educators
	<i>Master of Arts/Master of Business Admin.</i>	Economics/Business Administration	
	<i>Master of Business Administration</i>	Business Administration	
	<i>Master of Business Administration/Master of Science</i>	Business Administration/ Organizational Effectiveness, Development and Change	Business Administration/ Information Systems and Technology Management
	<i>Master of Science</i>	Accounting Economics Information Systems and Technology Management	Organizational Effectiveness, Development and Change
	<i>Doctor of Philosophy</i>	Economics	
COLLEGE OF ENGINEERING	<i>Master of Applied Sciences</i>	Civil Engineering	
	<i>Master of Chemical Engineering</i>	Chemical Engineering	
	<i>Master of Civil Engineering</i>	Civil Engineering	
	<i>Master of Science</i>	Electrical and Computer Engineering	Mechanical Engineering (thesis) Ocean Engineering
	<i>Master of Engineering: Mechanical</i>	Mechanical Engineering (non-thesis)	
	<i>Master of Materials Science and Engineering</i>	Materials Science	
	<i>Doctor of Philosophy</i>	Chemical Engineering Civil Engineering Electrical and Computer Engineering	Materials Science Mechanical Engineering Ocean Engineering

COLLEGE OF HEALTH SCIENCES	<i>Master of Science</i>	Exercise Science Health Promotion Health Services Administration	Human Nutrition Human Nutrition/Dietetic Internship Program
	<i>Master of Science in Nursing</i>	Nursing (includes Adult Nurse Practitioner, Clinical Nurse Specialist, Family Nurse Practitioner, Health Services Administration, and Neonatal Nurse Practitioner Certification)	
	<i>Certificate Programs</i>	Nutrition and Dietetics Certificate Program	Post-Master's Certificate Program in Nursing
COLLEGE OF HUMAN SERVICES, EDUCATION AND PUBLIC POLICY	<i>Master of Arts</i>	Counseling in Higher Education Education School Psychology	Teaching English as a Second Language Urban Affairs and Public Policy
	<i>Master of Education</i>	Curriculum and Instruction Educational Leadership Educational Technology	Exceptional Children and Youth Reading
	<i>Master of Environmental and Energy Policy</i>	Environmental and Energy Policy	
	<i>Master of Instruction</i>	Instruction	
	<i>Master of Public Administration</i>	Public Administration	
	<i>Master of Science</i>	Hospitality Information Management	Human Development and Family Studies
	<i>Education Specialist</i>	School Psychology	
	<i>Doctor of Education</i>	Educational Leadership	
COLLEGE OF MARINE AND EARTH STUDIES	<i>Master of Marine Management</i>	Marine Management	
	<i>Master of Marine Policy</i>	Marine Policy	
	<i>Master of Science</i>	Geology Marine Studies	Ocean Engineering
	<i>Doctor of Philosophy</i>	Geology Marine Studies	Oceanography Ocean Engineering

**TWENTY-FIVE MOST POPULAR
UNDERGRADUATE MAJORS**
Fall 2006

Rank	Major
1	Biological Sciences
2	Psychology
3	Elementary Teacher Education
4	English
5	Nursing
6	Finance
7	Marketing
8	Criminal Justice
9	Accounting
10	Political Science
11	Hotel, Restaurant and Institutional Management
12	Business Administration
13	Mechanical Engineering
14	History
15	Civil Engineering
16	Management
17	Communication Interest
18	Animal Science
19	Fashion Merchandising
20	Chemical Engineering
21	International Relations
22	Communication
23	Early Childhood Development and Education
24	History Education
25	Sociology

Source: Office of the Registrar

**AVERAGE SCHOLASTIC APTITUDE TEST SCORES
BY RESIDENCE FOR NEW FRESHMEN
*Fall 2002 Through Fall 2006***

	2002	2003	2004	2005	2006
SAT Critical Reading Scores					
- Residents	565	559	564	575	571
- Nonresidents	587	592	600	604	593
Total	580	579	587	594	586
National Avg.	504	507	508	508	503
SAT Mathematics Scores					
- Residents	572	566	570	580	582
- Nonresidents	611	619	620	627	619
Total	598	598	602	611	608
National Avg.	516	519	518	520	518
SAT Writing Scores					
- Residents	---	---	---	---	562
- Nonresidents	---	---	---	---	600
Total	---	---	---	---	588
National Avg.	---	---	---	---	497

Note: SAT Writing scores were added in 2005 and first systematically reported in 2006.

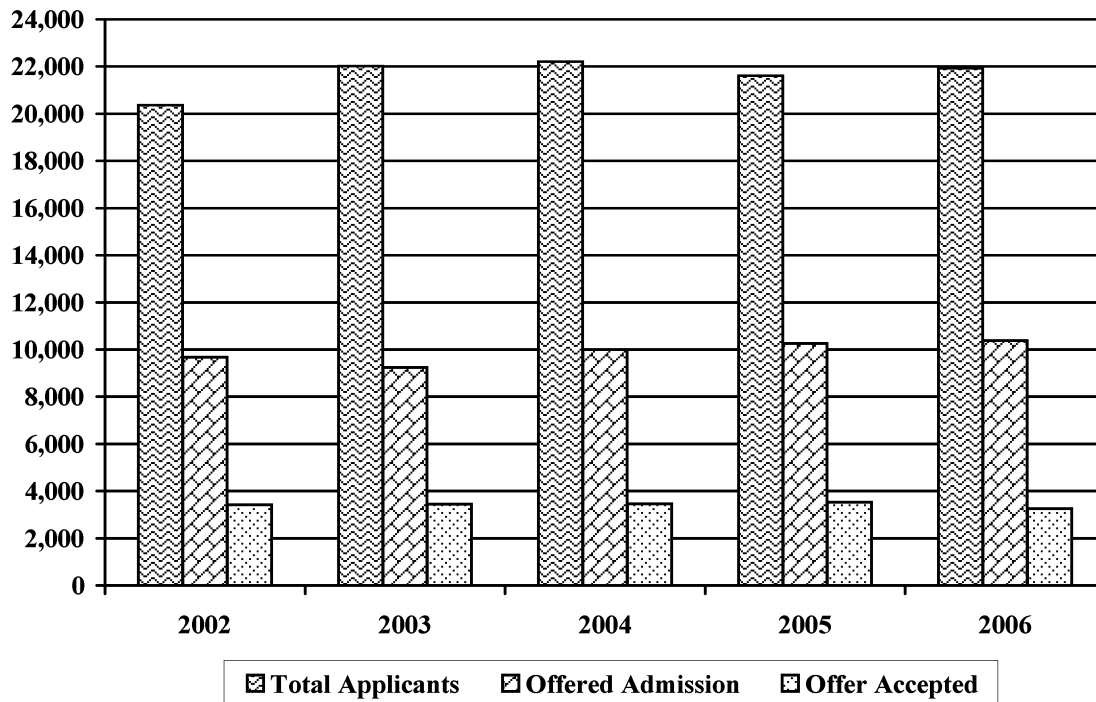
Source: Office of Admissions

FIRST-TIME FRESHMAN ADMISSIONS ACTIVITY

Fall 2002 Through Fall 2006

	2002	2003	2004	2005	2006
Total University Applicants	20,365	22,023	22,208	21,617	21,930
Offered Admission	9,669	9,235	9,999	10,256	10,373
Offer Rate	47.5%	41.9%	45.0%	47.4%	47.3%
Offer Accepted	3,420	3,450	3,458	3,522	3,259
Yield Rate	35.4%	37.4%	34.6%	34.3%	31.4%

TRENDS IN FRESHMAN ADMISSIONS ACTIVITY

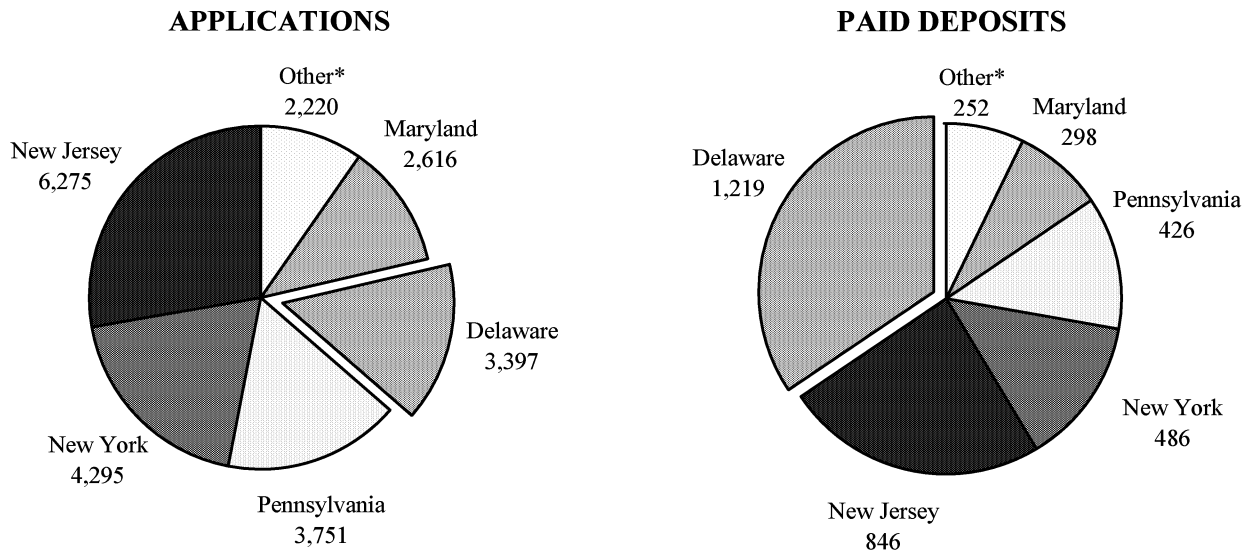


Source: Office of Admissions

**DISTRIBUTION OF TOTAL ADMISSIONS APPLICATIONS AND PAID DEPOSITS
FIRST-TIME FRESHMEN AND TRANSFER STUDENTS FROM SELECT REGIONAL STATES
FALL 2006**

STATE	APPLICATIONS	% OF TOTAL*	STATE	DEPOSITS	% OF TOTAL*
New Jersey	6,275	27.8%	DELAWARE	1,219	34.6%
New York	4,295	19.0%	New Jersey	846	24.0%
Pennsylvania	3,751	16.6%	New York	486	12.1%
DELAWARE	3,397	15.1%	Pennsylvania	426	13.8%
Maryland	2,616	11.6%	Maryland	298	8.4%
Connecticut	855	3.8%	Connecticut	98	2.8%
Massachusetts	852	3.8%	Massachusetts	96	2.7%
Virginia	414	1.8%	Virginia	49	1.4%
District of Columbia	99	0.4%	District of Columbia	9	0.3%
*TOTAL	22,554	100.0%	*TOTAL	3,527	100.0%

*NOTE: Total refers to applications and deposits from these nine states only.



*Other includes Connecticut, Massachusetts, Virginia, and the District of Columbia.

Source: Office of Admissions

**ENROLLMENT BY COLLEGE OR DIVISION
AND TIME STATUS
Fall 2002 Through Fall 2006**

	2002	2003	2004	2005	2006
UNIVERSITY TOTAL	21,289	21,121	21,238	20,982	20,380
Full-Time	17,679	17,773	18,134	17,956	17,546
Part-Time	3,610	3,348	3,104	3,026	2,834
Undergraduate¹	16,419	16,428	16,548	16,350	15,849
Full-Time	15,295	15,331	15,580	15,435	14,992
Part-Time	1,124	1,097	968	915	857
Graduate²	3,190	3,301	3,395	3,434	3,446
Full-Time	2,346	2,394	2,519	2,502	2,540
Part-Time	844	907	876	932	906
Professional & Continuing Studies³	1,680	1,392	1,295	1,198	1,085
Full-Time	38	48	35	19	14
Part-Time	1,642	1,344	1,260	1,179	1,071
College of Agriculture & Natural Resources	853	870	835	805	771
Undergraduate	707	718	676	636	596
Full-Time	641	638	610	579	529
Part-Time	66	80	66	57	67
Graduate	146	152	159	169	175
Full-Time	133	138	142	154	160
Part-Time	13	14	17	15	15
College of Arts & Sciences	7,783	7,985	8,303	8,178	7,755
Undergraduate	6,637	6,832	7,041	6,948	6,540
Full-Time	6,206	6,401	6,619	6,544	6,169
Part-Time	431	431	422	404	371
Graduate	1,146	1,153	1,262	1,230	1,215
Full-Time	1,015	1,032	1,133	1,088	1,094
Part-Time	131	121	129	142	121
Office of University Studies (No Graduate Program)	1,723	1,467	1,311	1,086	1,014
Undergraduate	1,723	1,467	1,311	1,086	1,014
Full-Time	1,613	1,392	1,247	1,044	974
Part-Time	110	75	64	42	40

ENROLLMENT (Continued)

	2002	2003	2004	2005	2006
Alfred Lerner College of					
Business & Economics	2,623	2,614	2,628	2,708	2,785
Undergraduate	2,108	2,074	2,098	2,171	2,273
Full-Time	2,037	2,007	2,037	2,114	2,206
Part-Time	71	67	61	57	67
Graduate	515	540	530	537	512
Full-Time	249	240	239	244	243
Part-Time	266	300	291	293	269
College of Engineering	1,588	1,726	1,722	1,782	1,731
Undergraduate	1,072	1,167	1,202	1,240	1,206
Full-Time	1,048	1,138	1,174	1,203	1,173
Part-Time	24	29	28	37	33
Graduate	516	559	520	542	525
Full-Time	449	471	459	468	452
Part-Time	67	88	61	74	73
College of Health Sciences	1,633	1,612	1,743	1,796	1,822
Undergraduate	1,493	1,468	1,600	1,647	1,652
Full-Time	1,233	1,250	1,418	1,481	1,501
Part-Time	260	218	182	166	151
Graduate	140	144	143	149	170
Full-Time	68	63	62	54	69
Part-Time	72	81	81	95	101
College of Human Services,					
Education & Public Policy	2,700	2,732	2,777	2,720	2,631
Undergraduate	2,068	2,082	2,095	2,014	1,906
Full-Time	1,991	1,990	2,004	1,915	1,825
Part-Time	77	92	91	99	81
Graduate	632	650	682	706	725
Full-Time	340	349	389	397	399
Part-Time	292	301	293	309	326
College of Marine & Earth Studies	95	103	99	101	148
Undergraduate ⁴	--	--	--	--	24
Full-Time	--	--	--	--	23
Part-Time	--	--	--	--	1
Graduate	95	103	99	101	124
Full-Time	92	101	95	97	123
Part-Time	3	2	4	4	1

ENROLLMENT (Continued)

	2002	2003	2004	2005	2006
Newark Campus	18,998	19,109	19,418	19,176	18,657
Undergraduate	15,808	15,808	16,023	15,742	15,211
Full-Time	14,769	14,816	15,109	14,880	14,400
Part-Time	1,039	992	914	862	811
Graduate	3,190	3,301	3,395	3,434	3,446
Full-Time	2,346	2,394	2,519	2,502	2,540
Part-Time	844	907	876	932	906
Associate in Arts: Georgetown	245	211	200	166	153
Undergraduate	245	211	200	166	153
Full-Time	202	166	164	134	138
Part-Time	43	45	36	32	15
Associate in Arts: Dover	96	110	66	113	113
Undergraduate	96	110	66	113	113
Full-Time	78	92	55	108	109
Part-Time	18	18	11	5	4
Associate in Arts: Wilmington	270	299	259	329	372
Undergraduate	270	299	259	329	372
Full-Time	246	257	252	313	345
Part-Time	24	42	7	16	27
University Associate in Arts Program⁵	611	620	525	608	638
Undergraduate	611	620	525	608	638
Full-Time	526	515	471	555	592
Part-Time	85	105	54	53	46

¹ Official 10th Day headcounts, Newark Campus and University Associate in Arts Program combined.

² Graduate students on sustaining status are considered full-time if the student spends at least one-half time on the completion of his/her thesis or dissertation.

³ Professional & Continuing Studies Students are non-matriculated and are unclassified although enrolled in undergraduate and graduate degree credit courses.

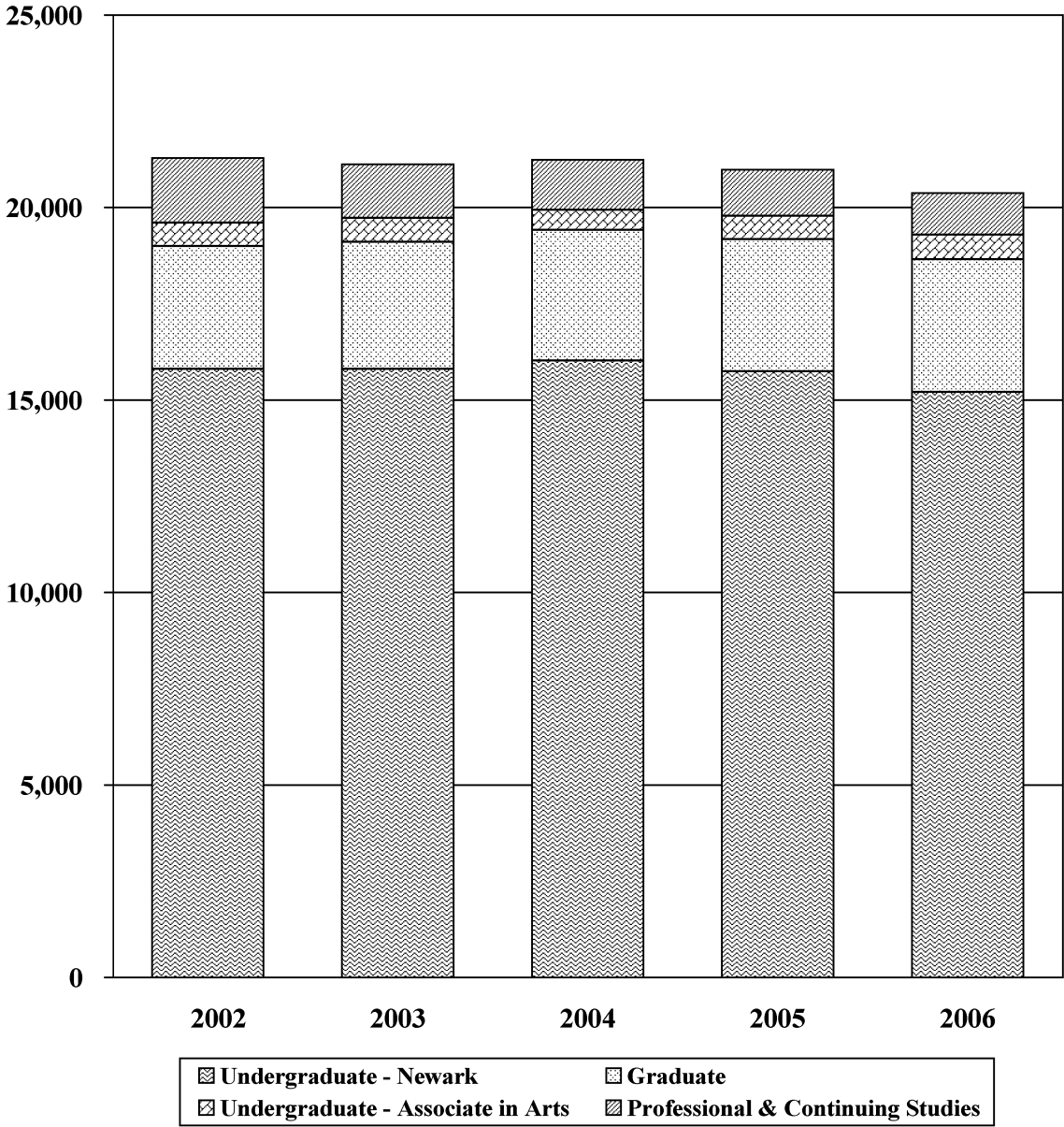
⁴ The Geology Department moved from the College of Arts & Sciences to the College of Marine & Earth Studies in 2006.

⁵ The University Associate in Arts Program commenced in 2004 and replaced the University Parallel Program.

Source: Office of the Registrar

TRENDS IN ENROLLMENT

Fall 2002 Through Fall 2006



ETHNICITY OF STUDENTS BY TIME STATUS
Fall 2002 Through Fall 2006

A. FULL-TIME MATRICULATED STUDENTS

	2002		2003		2004		2005		2006	
	N	%	N	%	N	%	N	%	N	%
Undergraduate¹										
Total	15,295	100.0	15,331	100.0	15,580	100.0	15,435	100.0	14,992	100.0
White	13,255	86.7	13,126	85.6	13,233	84.9	13,033	84.4	12,451	83.1
African-American	806	5.3	840	5.5	865	5.6	864	5.6	800	5.3
Hispanic	420	2.7	482	3.1	570	3.7	630	4.1	661	4.4
Asian	451	2.9	508	3.3	524	3.4	537	3.5	575	3.8
Native American	32	0.2	39	0.3	39	0.3	49	0.3	52	0.3
Non-Resident Alien	166	1.1	159	1.0	158	1.0	116	0.8	96	0.6
Other ²	165	1.1	177	1.2	191	1.2	206	1.3	357	2.4
Graduate										
Total	2,346	100.0	2,394	100.0	2,519	100.0	2,502	100.0	2,540	100.0
White	1,345	57.3	1,352	56.5	1,446	57.4	1,400	56.0	1,455	57.3
African-American	93	4.0	88	3.7	109	4.3	102	4.1	101	4.0
Hispanic	47	2.0	41	1.7	55	2.2	57	2.3	50	2.0
Asian	44	1.9	45	1.9	57	2.3	77	3.1	68	2.7
Native American	7	0.3	7	0.3	6	0.2	6	0.2	3	0.1
Non-Resident Alien	773	32.9	816	34.1	817	32.4	815	32.6	794	31.3
Other ²	37	1.6	45	1.9	29	1.2	45	1.8	69	2.7

B. PART-TIME MATRICULATED STUDENTS

	2002		2003		2004		2005		2006	
	N	%	N	%	N	%	N	%	N	%
Undergraduate¹										
Total	1,124	100.0	1,097	100.0	968	100.0	915	100.0	857	100.0
White	934	83.1	885	80.7	790	81.6	731	79.9	674	78.6
African-American	94	8.4	115	10.5	84	8.7	86	9.4	86	10.0
Hispanic	28	2.5	32	2.9	27	2.8	31	3.4	23	2.7
Asian	39	3.5	32	2.9	39	4.0	34	3.7	35	4.1
Native American	8	0.7	6	0.5	6	0.6	3	0.3	7	0.8
Non-Resident Alien	10	0.9	11	1.0	9	0.9	9	1.0	4	0.5
Other ²	11	1.0	16	1.5	13	1.3	21	2.3	28	3.3

B. PART-TIME MATRICULATED STUDENTS (Continued)

	2002		2003		2004		2005		2006	
	N	%	N	%	N	%	N	%	N	%
Graduate										
Total	844	100.0	907	100.0	876	100.0	932	100.0	906	100.0
White	694	82.2	728	80.3	727	83.0	761	81.7	706	77.9
African-American	54	6.4	62	6.8	52	5.9	70	7.5	59	6.5
Hispanic	10	1.2	14	1.5	10	1.1	17	1.8	13	1.4
Asian	34	4.0	38	4.2	34	3.9	34	3.6	37	4.1
Native American	1	0.1	4	0.4	4	0.5	3	0.3	4	0.4
Non-Resident Alien	37	4.4	32	3.5	23	2.6	33	3.5	49	5.4
Other ²	14	1.7	29	3.2	26	3.0	14	1.5	38	4.2

C. PROFESSIONAL & CONTINUING STUDIES STUDENTS

	2002		2003		2004		2005		2006	
	N	%	N	%	N	%	N	%	N	%
Undergraduate										
Total	1,680	100.0	1,392	100.0	1,295	100.0	1,198	100.0	1,085	100.0
White	1,326	78.9	1,121	80.5	1,016	78.5	926	77.3	828	76.3
African-American	161	9.6	116	8.3	129	10.0	121	10.1	89	8.2
Hispanic	41	2.4	34	2.4	30	2.3	35	2.9	41	3.8
Asian	68	4.0	53	3.8	50	3.9	68	5.7	72	6.6
Native American	5	0.3	2	0.1	6	0.5	2	0.2	2	0.2
Non-Resident Alien	42	2.5	32	2.3	29	2.2	20	1.7	16	1.5
Other ²	37	2.2	34	2.4	35	2.7	26	2.2	37	3.4

¹ Official 10th Day headcounts, Newark Campus and University Associate in Arts Program combined.

² Other includes Multiracial, Native Hawaiian or Other Pacific Islander, or Unknown.

Please note that percentage totals may not add to 100 due to rounding.

Source: Office of the Registrar

UNDERGRADUATE ENROLLMENT BY GENDER
(NEWARK CAMPUS)
Fall 2002 Through Fall 2006

	2002		2003		2004		2005		2006	
	N	%	N	%	N	%	N	%	N	%
Total - Newark Campus										
Women	9,296	59	9,184	58	9,270	58	9,107	58	8,836	58
Men	6,512	41	6,624	42	6,753	42	6,635	42	6,375	42
College of Agriculture & Natural Resources										
Women	444	63	431	60	409	61	379	60	350	59
Men	263	37	287	40	267	39	257	40	246	41
College of Arts & Sciences										
Women	3,973	60	4,060	59	4,121	59	4,121	59	3,905	60
Men	2,664	40	2,772	41	2,920	41	2,827	41	2,635	40
Alfred Lerner College of Business & Economics										
Women	849	40	833	40	800	38	840	39	901	40
Men	1,259	60	1,241	60	1,298	62	1,331	61	1,372	60
College of Engineering										
Women	215	20	230	20	242	20	259	21	236	20
Men	857	80	937	80	960	80	981	79	970	80
College of Health Sciences										
Women	1,134	76	1,136	77	1,223	76	1,224	74	1,216	74
Men	359	24	332	23	377	24	423	26	436	26
College of Human Services, Education & Public Policy										
Women	1,806	87	1,794	86	1,792	86	1,713	85	1,631	86
Men	262	13	288	14	303	14	301	15	275	14
College of Marine & Earth Studies¹										
Women	--	--	--	--	--	--	--	--	12	50
Men	--	--	--	--	--	--	--	--	12	50
Office of University Studies										
Women	875	51	700	48	683	52	571	53	585	58
Men	848	49	767	52	628	48	515	47	429	42

¹ The Geology Department moved from the College of Arts & Sciences to the College of Marine & Earth Studies in 2006.

Source: Office of the Registrar

GRADUATE ENROLLMENT BY GENDER
(NEWARK CAMPUS)
Fall 2002 Through Fall 2006

	2002		2003		2004		2005		2006	
	N	%	N	%	N	%	N	%	N	%
Total - Newark Campus										
Women	1,625	51	1,646	50	1,748	51	1,769	52	1,809	52
Men	1,565	49	1,655	50	1,647	49	1,665	48	1,637	48
College of Agriculture & Natural Resources										
Women	75	51	78	51	82	52	83	49	96	55
Men	71	49	74	49	77	48	86	51	79	45
College of Arts & Sciences										
Women	606	53	613	53	682	54	672	55	676	56
Men	540	47	540	47	580	46	558	45	539	44
Alfred Lerner College of Business & Economics										
Women	197	38	182	34	194	37	194	36	190	37
Men	318	62	358	66	336	63	343	64	322	63
College of Engineering										
Women	135	26	134	24	139	27	150	28	137	26
Men	381	74	425	76	381	73	392	72	388	74
College of Health Sciences										
Women	116	83	122	85	110	77	123	83	140	82
Men	24	17	22	15	33	23	26	17	30	18
College of Human Services, Education & Public Policy										
Women	447	71	466	72	493	72	498	71	509	70
Men	185	29	184	28	189	28	208	29	216	30
College of Marine & Earth Studies										
Women	49	52	51	50	48	48	49	49	61	49
Men	46	48	52	50	51	52	52	51	63	51

Source: Office of the Registrar

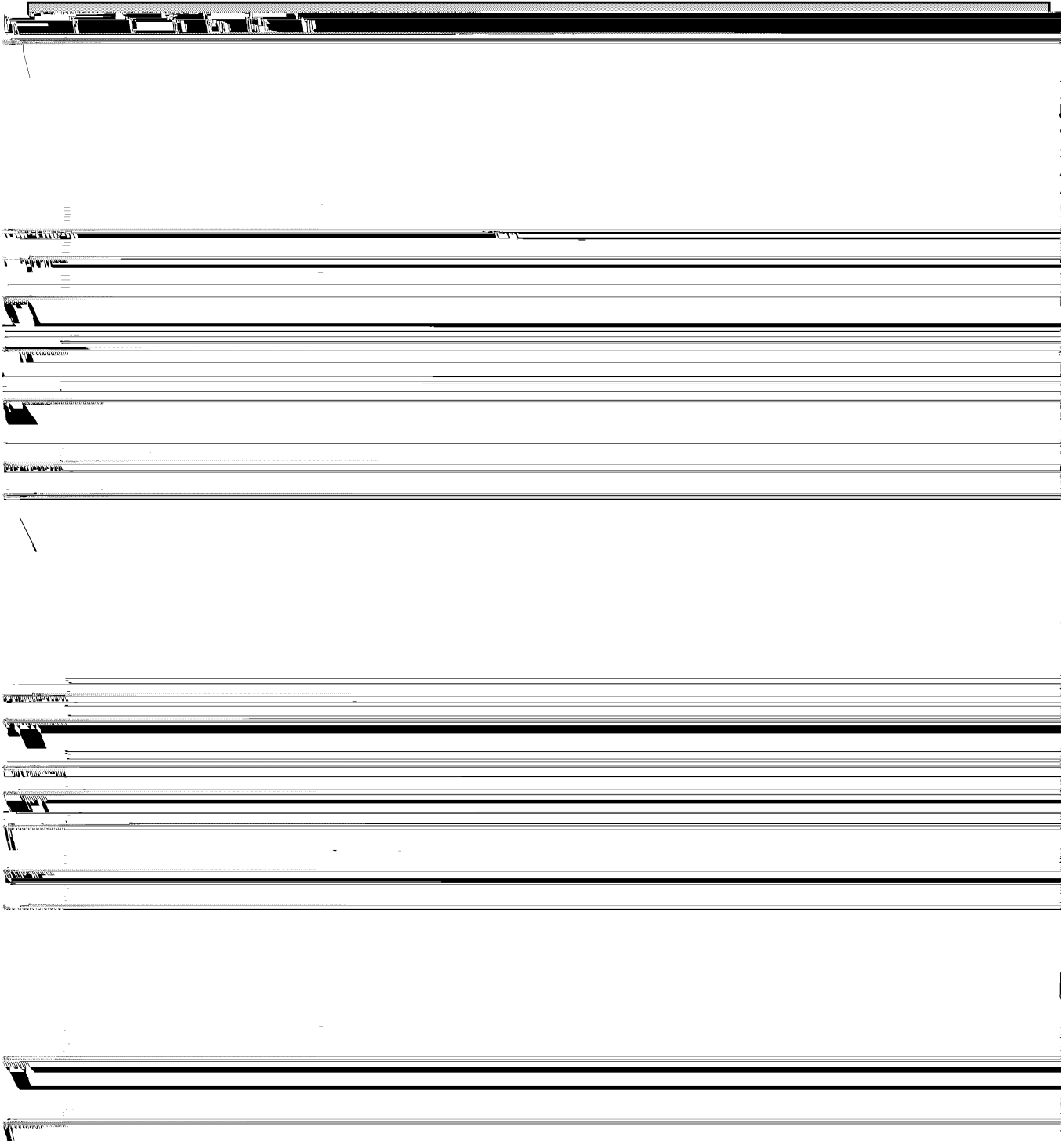
ENROLLMENT BY RESIDENCE STATUS
Fall 2002 Through Fall 2006

	2002		2003		2004		2005		2006	
	N	%	N	%	N	%	N	%	N	%
TOTAL STUDENTS	21,289		21,121		21,238		20,982		20,380	
Delawareans	9,440	44	9,481	45	9,399	44	9,119	43	8,600	42
Nonresidents	11,849	56	11,640	55	11,839	56	11,863	57	11,780	58
NEWARK CAMPUS										
Undergraduate	15,808		15,808		16,023		15,742		15,211	
Delawareans	6,404	41	6,661	42	6,741	42	6,474	41	6,044	40
Nonresidents	9,404	59	9,147	58	9,282	58	9,268	59	9,167	60
Graduate	3,190		3,301		3,395		3,434		3,446	
Delawareans	1,071	34	1,122	34	1,121	33	1,112	32	1,088	32
Nonresidents	2,119	66	2,179	66	2,274	67	2,322	68	2,358	68
ASSOCIATE IN ARTS PROGRAM	611		620		525		608		638	
Delawareans	598	98	605	98	513	98	591	97	620	97
Nonresidents	13	2	15	2	12	2	17	3	18	3
PROFESSIONAL & CONTINUING STUDIES	1,680		1,392		1,295		1,198		1,085	
Delawareans	1,367	81	1,093	79	1,024	79	942	79	848	78
Nonresidents	313	19	299	21	271	21	256	21	237	22

Source: Office of the Registrar

Intentionally Blank

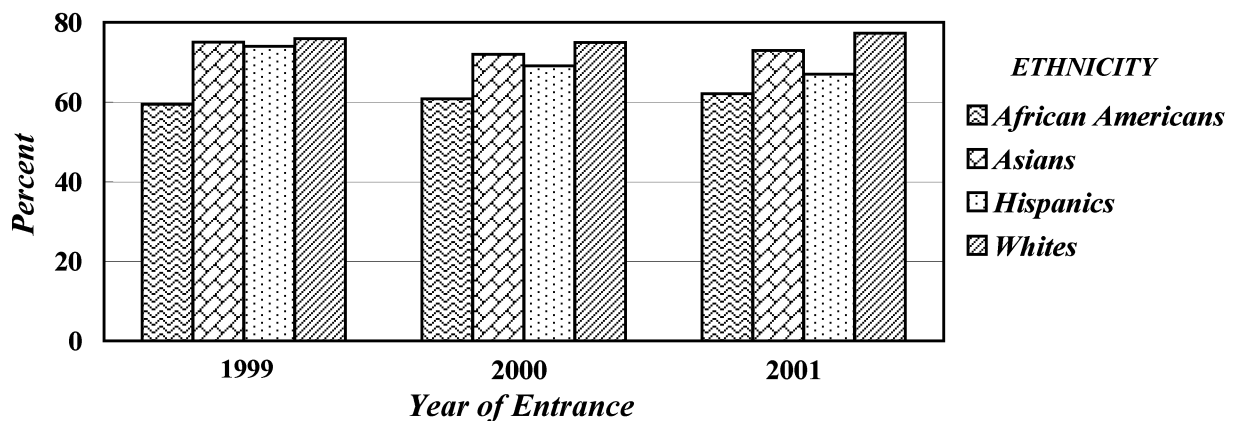
RATE OF ATTRITION BY YEAR OF ENTRANCE NEW FRESHMEN OF *FALL 1999 - 2005*



GRADUATION RATES FOR ENTERING FULL-TIME FRESHMEN

	1999	2000	2001
Total Number in Cohort	3,513	3,128	3,357
% Graduating within Four Years	62.4	60.2	64.3
Males	55.9	51.6	54.7
Females	66.6	65.6	71.4
African-Americans	39.4	41.0	44.8
Asians	62.5	59.8	56.1
Hispanics	62.3	54.3	51.5
Whites	63.8	61.9	66.2
Residents	50.0	47.6	52.5
Nonresidents	68.2	66.8	70.0
% Graduating within Five Years	75.8	73.7	76.0
Males	71.8	70.1	70.5
Females	76.9	75.9	80.0
African-Americans	59.4	60.8	62.1
Asians	75.0	72.0	72.9
Hispanics	74.0	69.1	67.0
Whites	75.9	74.9	77.3
Residents	68.0	68.0	72.1
Nonresidents	78.1	76.7	77.9

TRENDS IN FIVE YEAR GRADUATION RATES



Source: Office of Institutional Research & Planning

DEGREES GRANTED BY COLLEGE AND LEVEL
2001-02 Through 2005-06

	2002	2003	2004	2005	2006
UNIVERSITY TOTALS	4,295	4,554	4,233	4,488	4,601
Bachelor's Degrees	3,534	3,676	3,392	3,602	3,683
Master's Degrees	624	743	664	697	696
Doctorates	137	135	177	189	222
College of Agriculture & Natural Resources					
Bachelor's Degrees	185	178	155	181	164
Master's Degrees	35	39	37	43	39
Doctorates	6	4	7	5	9
College of Arts & Sciences					
Bachelor's Degrees	1,660	1,671	1,582	1,657	1,750
Master's Degrees	222	271	205	199	179
Doctorates	62	52	68	87	102
Alfred Lerner College of Business & Economics					
Bachelor's Degrees	545	624	567	571	565
Master's Degrees	117	164	147	168	186
Doctorates	3	6	8	5	3
College of Engineering					
Bachelor's Degrees	162	204	170	200	205
Master's Degrees	50	49	66	62	70
Doctorates	34	30	48	56	59
College of Health Sciences					
Bachelor's Degrees	399	380	374	409	419
Master's Degrees	36	30	27	46	27
Doctorates	1	1	0	1	0
College of Human Services, Education & Public Policy					
Bachelor's Degrees	583	619	544	584	580
Master's Degrees	156	172	169	162	185
Doctorates	26	32	39	24	40
College of Marine & Earth Studies					
Bachelor's Degrees ¹	--	--	--	--	--
Master's Degrees	8	18	13	17	10
Doctorates	5	10	7	11	9

¹ The Geology Department moved from the College of Arts & Sciences to the College of Marine & Earth Studies in 2006 and will grant its first Bachelor's degrees in 2007.

**EMPLOYMENT AND EDUCATIONAL STATUS OF
BACCALAUREATES BY CURRICULUM GROUP
CLASS OF 2005**

Curriculum Group	Number in Class	Number of Respondents ¹		Full-Time Employment		Part-Time Employment		Pursuing Further Education		Still Seeking Employment	
		N	%	%	%	%	%	%	%	%	%
Agriculture & Natural Resources	175	63	36.0	58.7	12.7	19.0	7.9				
Arts & Sciences											
Humanities	417	145	34.8	67.6	10.3	13.1	9.0				
Social Sciences	904	295	32.6	71.2	4.4	14.2	8.5				
Life & Health Sciences	158	63	39.9	73.0	--	25.4	--				
Physical Sciences	166	61	36.7	72.1	--	16.4	9.8				
Business & Economics	571	227	39.8	89.9	3.1	2.2	4.4				
Engineering	189	103	54.5	85.4	--	11.7	1.9				
Health Sciences	390	144	36.9	72.9	2.8	21.5	2.8				
Human Services, Educ. & Public Policy	557	213	38.2	85.9	2.8	4.2	5.6				
2005 University Total²	3,527	1,314	37.3	77.2	4.0	11.9	5.9				

NOTE: Percentages may not total to 100.0 because of rounding

¹ The 2005 Career Plans Survey represents survey respondents from the full baccalaureate graduating class.

² Six (0.5%) of the 1,314 respondents indicated they are not seeking work. University total includes all curriculum groups.

Source: Data obtained through the Bank of America Career Services Center and the Office of Institutional Research & Planning Career Plans Survey.

EMPLOYEES BY ETHNICITY AND EEO CATEGORY
Fall 2002 Through Fall 2006

EEO-6 CATEGORY		2002	2003	2004	2005	2006
Executive/	Full-Time - Total	359	357	366	378	376
Administrative/	White	319	319	327	343	341
Managerial	African-American	31	28	29	28	26
	Hispanic	1	2	2	2	2
	Asian	6	6	6	3	4
	Native American	2	2	2	2	3
	Unknown	0	0	0	0	0
	Part-Time - Total	13	11	13	10	14
	White	13	11	13	10	14
	African-American	0	0	0	0	0
	Hispanic	0	0	0	0	0
	Asian	0	0	0	0	0
	Native American	0	0	0	0	0
	Unknown	0	0	0	0	0
Faculty	Full-Time - Total	1,073	1,068	1,070	1,077	1,117
	White	924	911	916	911	938
	African-American	45	50	47	45	51
	Hispanic	20	22	20	27	27
	Asian	81	82	83	90	98
	Native American	3	3	4	4	3
	Unknown	0	0	0	0	0
	Part-Time - Total	21	25	24	33	33
	White	19	24	23	28	28
	African-American	2	1	1	2	2
	Hispanic	0	0	0	0	0
	Asian	0	0	0	3	3
	Native American	0	0	0	0	0
	Unknown	0	0	0	0	0
Professional	Full-Time - Total	853	886	948	974	953
	White	699	723	762	788	777
	African-American	65	69	74	84	79
	Hispanic	16	15	16	12	13
	Asian	68	74	89	84	77
	Native American	5	5	7	6	4
	Unknown	0	0	0	0	3
	Part-Time - Total	89	85	90	91	90
	White	77	76	76	79	78
	African-American	5	5	7	3	3
	Hispanic	2	1	2	3	1
	Asian	5	3	5	6	8
	Native American	0	0	0	0	0
	Unknown	0	0	0	0	0

EMPLOYEES BY ETHNICITY AND EEO CATEGORY
(Continued)

EEO-6 CATEGORY		2002	2003	2004	2005	2006
Secretarial/ Clerical	Full-Time - Total	646	630	623	623	616
	White	575	560	549	549	534
	African-American	52	52	53	54	57
	Hispanic	12	12	14	12	12
	Asian	1	2	3	4	5
	Native American	6	4	4	4	6
	Unknown	0	0	0	0	2
	Part-Time - Total	64	65	66	63	67
	White	61	62	62	58	62
	African-American	3	3	4	5	5
	Hispanic	0	0	0	0	0
	Asian	0	0	0	0	0
	Native American	0	0	0	0	0
Unknown	0	0	0	0	0	
Technical/ Paraprofessional	Full-Time - Total	128	111	111	112	120
	White	98	85	89	91	98
	African-American	21	17	16	13	13
	Hispanic	0	0	1	1	2
	Asian	5	5	3	4	4
	Native American	4	4	2	3	3
	Unknown	0	0	0	0	0
	Part-Time - Total	16	12	14	17	17
	White	9	5	7	10	8
	African-American	5	6	6	6	5
	Hispanic	1	0	0	0	0
	Asian	1	1	1	1	4
	Native American	0	0	0	0	0
Unknown	0	0	0	0	0	
Skilled Craft	Full-Time - Total	139	139	139	140	143
	White	123	123	123	123	124
	African-American	10	10	10	12	12
	Hispanic	3	3	3	3	5
	Asian	2	2	2	1	1
	Native American	1	1	1	1	1
	Unknown	0	0	0	0	0
	Part-Time - Total	0	0	0	0	0
	White	0	0	0	0	0
	African-American	0	0	0	0	0
	Hispanic	0	0	0	0	0
	Asian	0	0	0	0	0
	Native American	0	0	0	0	0
Unknown	0	0	0	0	0	

**EMPLOYEES BY ETHNICITY AND EEO CATEGORY
(Continued)**

EEO-6 CATEGORY		2002	2003	2004	2005	2006
Service/ Maintenance	Full-Time - Total	422	424	428	439	445
	White	247	244	251	248	251
	African-American	143	140	140	151	147
	Hispanic	13	19	18	21	24
	Asian	9	13	12	13	16
	Native American	10	8	7	6	7
	Unknown	0	0	0	0	0
	Part-Time - Total	5	10	8	8	11
	White	5	9	7	7	10
	African-American	0	0	0	0	0
	Hispanic	0	1	1	1	1
	Asian	0	0	0	0	0
	Native American	0	0	0	0	0
	Unknown	0	0	0	0	0
ALL EMPLOYEES	Full-Time - Total	3,620	3,615	3,685	3,743	3,770
	White	2,985	2,965	3,017	3,053	3,063
	African-American	367	366	369	387	385
	Hispanic	65	73	74	78	85
	Asian	172	184	198	199	205
	Native American	31	27	27	26	27
	Unknown	0	0	0	0	5
	Part-Time - Total	208	208	215	222	232
	White	184	187	188	192	200
	African-American	15	15	18	16	15
	Hispanic	3	2	3	4	2
	Asian	6	4	6	10	15
	Native American	0	0	0	0	0
	Unknown	0	0	0	0	0
TOTAL	3,828	3,823	3,900	3,965	4,002	

Source: Office of Institutional Research & Planning

FULL-TIME EMPLOYEES BY GENDER
Fall 2002 Through Fall 2006

	2002	2003	2004	2005	2006
Faculty	1,073	1,068	1,070	1,077	1,117
Male	701	684	674	675	693
Female	372	384	396	402	424
Professionals (Includes Chairpersons)	1,212	1,243	1,314	1,352	1,329
Male	613	610	629	644	637
Female	599	633	685	708	692
Salaried Staff/Hourly	1,335	1,304	1,301	1,314	1,324
Male	467	469	468	479	499
Female	868	835	833	835	825
TOTAL	3,620	3,615	3,685	3,743	3,770
Male	1,781	1,763	1,771	1,798	1,829
Female	1,839	1,852	1,914	1,945	1,941

Source: Office of Institutional Research & Planning

NUMBER OF FACULTY BY RANK AND TENURE STATUS
Fall 2002 Through Fall 2006

	2002			2003			2004			2005			2006		
	Tenured/ Tenure Track	Non- Tenure Track	Total	Tenured/ Tenure Track	Non- Tenure Track	Total	Tenured/ Tenure Track	Non- Tenure Track	Total	Tenured/ Tenure Track	Non- Tenure Track	Total	Tenured/ Tenure Track	Non- Tenure Track	Total
Full-Time															
Professor	372	8	380	363	7	370	355	8	363	344	12	356	358	9	367
Associate Professor	289	19	308	293	18	311	289	19	308	295	20	315	302	24	326
Assistant Professor	159	114	273	175	95	270	181	104	285	188	99	287	199	105	304
Instructor	0	109	109	0	114	114	0	113	113	0	118	118	0	119	119
Lecturer	0	3	3	0	3	3	0	1	1	0	1	1	0	1	1
Total Full-Time Faculty	820	253	1,073	831	237	1,068	825	245	1,070	827	250	1,077	859	258	1,117
Total Part-Time Faculty	4	17	21	3	22	25	5	19	24	5	28	33	4	29	33
Grand Total	824	270	1,094	834	259	1,093	830	264	1,094	832	278	1,110	863	287	1,150

Note: Data include regular faculty (active or on sabbatical leave) at the Newark Campus and the Associate in Arts Program. Visiting faculty are excluded.

Source: Office of Institutional Research & Planning

TENURE STATUS AMONG FULL-TIME TENURE TRACK FACULTY
Fall 2002 through Fall 2006

	2002		2003		2004		2005		2006	
	Tenured/ Eligible	% Tenured	Tenured/ Eligible	% Tenured	Tenured/ Eligible	% Tenured	Tenured/ Eligible	% Tenured	Tenured/ Eligible	% Tenured
Professor	372/372	100.0	363/363	100.0	355/355	100.0	344/344	100.0	358/358	100.0
Associate Professor	286/289	99.0	290/293	99.0	286/289	99.0	288/295	97.6	296/302	98.0
Assistant Professor	0/159	0.0	0/175	0.0	0/181	0.0	0/188	0.0	0/199	0.0
Total	658/820	80.2	653/831	78.6	641/825	77.7	632/827	76.4	654/859	76.1

*Key: % Tenured = # Tenured/# Eligible * 100. University policy is to grant tenure at time of promotion to Associate Professor.*

If promotion is not achieved, faculty member is terminated, so there are no tenured faculty at the Assistant Professor level.

Note: Counts include regular faculty (active or on sabbatical leave) on the Newark campus and the Associate in Arts Program. Visiting faculty are excluded.

Source: Office of Institutional Research & Planning

AVERAGE TOTAL COMPENSATION OF FULL-TIME FACULTY BY RANK
Academic Year 2002-03 Through 2006-07

	2002-03		2003-04		2004-05		2005-06		2006-07	
	Average Comp. \$	% Increase From Previous Year	Average Comp. \$	% Increase From Previous Year	Average Comp. \$	% Increase From Previous Year	Average Comp. \$	% Increase From Previous Year	Average Comp. \$	% Increase From Previous Year
Professor	130,044	2.2	135,463	4.2	141,385	5.9	147,516	4.3	154,733	4.9
Associate Professor	94,225	1.9	97,478	3.5	101,880	4.5	106,202	4.2	109,358	3.0
Assistant Professor	77,991	5.7	80,776	3.6	83,609	3.5	86,006	2.9	90,065	4.7
Instructor	62,200	3.7	64,904	4.3	67,805	4.5	69,492	2.5	73,193	5.3

Data Source: AAUP Annual Survey of Faculty Compensation.

Note: Includes regular full-time faculty and chairpersons.

Total compensation refers to 9-month equivalent salary plus fringe benefits.

Source: Office of Institutional Research & Planning

**FULL-TIME EMPLOYEES' SALARY
PRINCIPAL SOURCE OF FUNDING
*Fall 1990, Fall 2002 Through Fall 2006***

	1990	2002	2003	2004	2005	2006
Faculty	911	1,073	1,068	1,070	1,077	1,117
Paid Principally from Unrestricted Funds	878	1,017	1,020	1,020	1,035	1,072
% of Total	96.4%	94.8%	95.5%	95.3%	96.1%	96.0%
Professionals (Includes Chairpersons)	1,073	1,212	1,243	1,314	1,352	1,329
Paid Principally from Unrestricted Funds	947	966	990	1,113	1,155	1,133
% of Total	88.3%	79.7%	79.6%	84.7%	85.4%	85.3%
Salaried Staff/Hourly	1,726	1,335	1,304	1,301	1,314	1,324
Paid Principally from Unrestricted Funds	1,656	1,203	1,190	1,201	1,228	1,234
% of Total	95.9%	90.1%	91.3%	92.3%	93.5%	93.2%
TOTAL	3,710	3,620	3,615	3,685	3,743	3,770
Paid Principally from Unrestricted Funds	3,481	3,186	3,200	3,334	3,418	3,439
% of Total	93.8%	88.0%	88.5%	90.5%	91.3%	91.2%

Note: Unrestricted funds represent basic, allocated, and self supporting fund types.

Source: Office of Institutional Research & Planning

STATEMENT OF OPERATING ACTIVITIES
FY 02 Through FY 06
 (Thousands of Dollars)

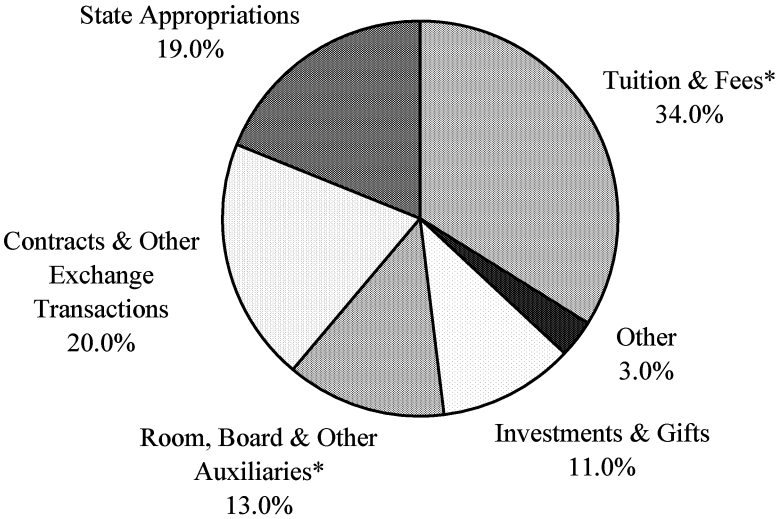
	FY 02	FY 03	FY 04	FY 05	FY 06
	\$	\$	\$	\$	\$
OPERATING REVENUE:					
Tuition and fees, net of scholarship & fellowship allowance ⁽¹⁾	165,435	180,531	191,853	204,064	210,971
State operating appropriations	98,520	100,114	102,876	109,140	115,666
Contracts & other exchange transactions	89,405	99,530	109,844	116,087	124,168
Room, board & other auxiliaries, net of scholarship & fellowship allowance ⁽¹⁾	63,230	66,672	69,831	73,128	77,568
Investments and gifts	64,825	63,400	66,321	66,337	70,046
Other	15,313	20,635	15,622	16,494	18,735
Total operating revenues and support	496,728	530,882	556,347	585,250	617,154
<i>⁽¹⁾ Scholarship and fellowship allowance</i>					
	45,396	48,837	52,279	55,795	59,908
OPERATING EXPENSES AND TRANSFERS:					
Instruction & academic support	259,896	274,829	287,149	307,471	316,456
Sponsored activities	93,627	106,606	114,528	121,878	136,555
Student services	18,948	19,064	19,558	19,244	20,725
Student aid	4,541	4,766	4,319	4,851	4,846
Institutional	43,841	47,310	50,280	57,927	51,858
Room, board & other auxiliaries	57,340	60,239	61,743	65,062	73,105
Transfers & other	18,535	18,068	18,770	8,817	13,609
Total operating expenses and transfers	496,728	530,882	556,347	585,250	617,154

Source: Associate Vice President for Financial Services and Associate Treasurer

OPERATING REVENUE, EXPENSES AND TRANSFERS

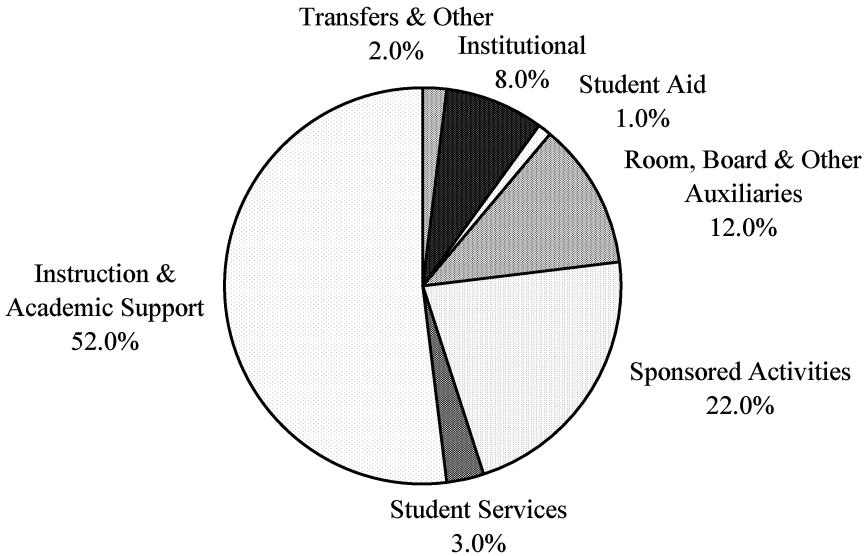
Fiscal Year 2006

REVENUE (\$617.2 millions)



*Net of Scholarship & Fellowship Allowance

EXPENSES AND TRANSFERS (\$617.2 millions)



Source: Associate Vice President for Financial Services and Associate Treasurer

CHANGE IN NET ASSETS
FY 02 Through FY 06
(Thousands of Dollars)

	FY 02	FY 03	FY 04	FY 05	FY 06
	\$	\$	\$	\$	\$
Net assets at beginning of year	1,434,486	1,370,892	1,399,382	1,559,706	1,665,416
Change in net assets:					
Operating transfers	15,987	16,778	16,300	6,338	13,507
Nonoperating activities:					
Net realized and unrealized gains (losses)	(64,194)	6,756	132,319	84,847	130,388
Contributions for endowment and buildings	15,910	14,887	26,599	23,384	28,606
State capital appropriations	7,325	5,000	5,000	8,500	7,000
Amortization of intangible assets	(3,290)	--	--	--	--
Intangible assets impairment charge	(25,886)	--	--	--	--
Cumulative effect of change in accounting principle	--	--	--	--	(4,440)
Net endowment income and other	(9,446)	(14,931)	(19,894)	(17,359)	(10,298)
Total nonoperating activities	<u>(79,581)</u>	<u>11,712</u>	<u>144,024</u>	<u>99,372</u>	<u>151,256</u>
Net assets at end of year	<u>1,370,892</u>	<u>1,399,382</u>	<u>1,559,706</u>	<u>1,665,416</u>	<u>1,830,179</u>
Percent change from prior year	-4%	2%	11%	7%	10%
Net assets:*					
Unrestricted	885,294	1,082,625	1,204,929	1,283,941	1,420,511
Temporarily restricted	48,522	79,240	101,478	116,527	122,034
Permanently restricted	<u>437,076</u>	<u>237,517</u>	<u>253,299</u>	<u>264,948</u>	<u>287,634</u>
Total net assets	<u>1,370,892</u>	<u>1,399,382</u>	<u>1,559,706</u>	<u>1,665,416</u>	<u>1,830,179</u>
Endowment and funds invested as endowment:					
Market value	868,200	868,100	995,900	1,077,100	1,223,200
Percent change from prior year	-6%	0%	15%	8%	14%

*The FY03 increase in Unrestricted and Temporarily restricted, and decrease in Permanently restricted, reflects a change in the method of accounting for its endowment.

Source: Associate Vice President for Financial Services and Associate Treasurer

EXTERNALLY SPONSORED ACTIVITIES
(Thousands of Dollars)

College / Unit	FY 2006				FY 2005 Total \$	Percent Change %
	Instruction & Dept. Rsch. \$	Sponsored Research \$	Public Service \$	Total \$		
EXTERNALLY SPONSORED ACTIVITIES:						
Agriculture & Natural Resources	1,704	10,753	6,868	19,325	17,435	10.8
Arts & Sciences	6,666	29,751	1,847	38,264	39,615	(3.4)
Business & Economics	3,053	215	1,507	4,775	4,727	1.0
Engineering	2,463	32,308	155	34,926	32,651	7.0
Health Sciences	1,185	751	540	2,476	2,203	12.4
Human Services, Education & Public Policy	5,573	2,425	10,908	18,906	18,284	3.4
Marine & Earth Studies	446	9,446	1,063	10,955	10,965	(0.1)
Institute of Energy Conversion	1	1,848	0	1,849	2,211	(16.4)
Delaware Biotechnology Institute	1,092	7,233	15	8,340	5,128	62.6
Center for International Studies	3,081	0	895	3,976	3,366	18.1
Other	3,046	530	1,427	5,003	4,125	21.3
TOTAL EXTERNALLY SPONSORED ACTIVITIES	28,310	95,260	25,225	148,795	140,710	5.7

Source: Associate Vice President for Financial Services and Associate Treasurer

**TUITION, FEES, ROOM AND BOARD CHARGES PER YEAR
AND THEIR ANNUAL RATE OF INCREASE
1996-97 Through 2006-07**

Year	TUITION AND FEES ¹						BOARD ²		TRADITIONAL DOUBLE ROOM ³	
	Resident			Nonresident			\$	%	\$	%
	\$	Incr.	%	\$	Incr.	%				
96-97	4,430	3.4		11,690	4.8		2,110	3.9	2,480	3.8
97-98	4,574	3.3		12,204	4.4		2,180	3.3	2,590	4.4
98-99	4,716	3.1		12,716	4.2		2,252	3.3	2,700	4.2
99-00	4,858	3.0		13,228	4.0		2,322	3.1	2,810	4.1
00-01	5,004	3.0		13,754	4.0		2,392	3.0	2,920	3.9
01-02	5,290	5.7		14,380	4.6		2,470	3.3	3,064	4.9
02-03 ⁴	5,760	8.9		15,290	6.3		2,590	4.9	3,232	5.5
03-04	6,498	12.8		16,028	4.8		2,690	3.9	3,428	6.1
04-05	6,954	7.0		16,640	3.8		2,790	3.7	3,668	7.0
05-06	7,318	5.2		17,474	5.0		2,900	3.9	3,924	7.0
06-07	7,740	5.8		18,450	5.6		3,030	4.5	4,336	10.5

¹Fall 2006 fees include: Student Health - \$410; Student Union - \$206; and Comprehensive Fee - \$144.

²The board charge reflects the largest number of meals available (19 per week).

³Room rates include Winter Session at no additional charge.

⁴2002-03 tuition includes a \$120 mid-year increase for the Spring semester.

Source: Office of Institutional Research & Planning

**STUDENT CHARGES AT THE UNIVERSITY OF DELAWARE
AND ADMISSIONS COMPETITORS**

	TUITION & FEES									
	Resident					Nonresident				
	02-03 ¹	03-04	04-05	05-06	06-07	02-03 ¹	03-04	04-05	05-06	06-07
Univ. Of Delaware*	5,760	6,498	6,954	7,318	7,740	15,290	16,028	16,640	17,474	18,450
Penn State Univ.	8,382	9,706	10,856	11,508	12,164	17,610	19,328	20,784	21,744	22,712
Rutgers Univ.	7,303	7,927	8,564	9,221	9,958	13,279	14,441	15,599	16,819	18,463
Univ. of Maryland*	5,899	6,759	7,540	7,961	8,046	15,101	17,433	18,840	20,285	21,485
Univ. of Virginia*	4,980	5,964	6,600	7,180	8,035	20,190	21,934	22,641	23,924	25,959
Va. Polytech. Inst.*	4,336	5,095	5,838	6,378	6,973	13,952	14,979	16,531	17,717	18,929

	ROOM & BOARD									
	Resident					Nonresident				
	02-03	03-04	04-05	05-06	06-07	02-03	03-04	04-05	05-06	06-07
Univ. Of Delaware	5,822	6,118	6,458	6,824	7,366	5,822	6,118	6,458	6,824	7,366
Penn State Univ.	6,130	6,430	6,740	7,060	7,400	6,130	6,430	6,740	7,060	7,400
Rutgers Univ.	6,970	8,027	8,357	8,838	9,312	6,970	8,027	8,357	8,838	9,312
Univ. of Maryland	7,101	7,468	7,791	8,075	8,562	7,101	7,468	7,791	8,075	8,562
Univ. of Virginia	5,231	5,591	5,960	6,389	6,909	5,231	5,591	5,960	6,389	6,909
Va. Polytech. Inst.	4,070	4,084	4,224	4,456	4,766	4,070	4,084	4,224	4,456	4,766

	TOTAL INSTITUTIONAL COSTS									
	Resident					Nonresident				
	02-03 ¹	03-04	04-05	05-06	06-07	02-03 ¹	03-04	04-05	05-06	06-07
Univ. Of Delaware*	11,582	12,616	13,412	14,142	15,106	21,112	22,146	23,098	24,298	25,816
Penn State Univ.	14,512	16,136	17,596	18,568	19,564	23,740	25,758	27,524	28,804	30,112
Rutgers Univ.	14,273	15,954	16,921	18,059	19,270	20,249	22,468	23,956	25,657	27,775
Univ. of Maryland*	13,000	14,227	15,331	16,036	16,608	22,202	24,901	26,631	28,360	30,047
Univ. of Virginia*	10,211	11,555	12,560	13,569	14,944	25,421	27,525	28,601	30,313	32,868
Va. Polytech. Inst.*	8,406	9,179	10,062	10,834	11,739	18,022	19,063	20,755	22,173	23,695

¹2002-03 University of Delaware tuition includes a \$120 mid-year increase for the Spring semester.

*These institutions had a mid-year increase in tuition for the Spring 2003 semester.

Source: Data obtained through the Office of Institutional Research & Planning Survey of Undergraduate Charges.

BUILDING INVENTORY

	Newark	All Sites
Academic		
Major Classrooms & Laboratories	47	54
Farm/Auxiliary	83	128
Other Special Use	33	39
Physical Education	7	7
Total Academic	170	228
Student Residence and Service		
Residence Halls (Major Residence Hall Complexes = 9)	46	49
Other Housing	59	92
Dining Halls	5	5
Student Activities	18	18
Total Student Residence & Service	128	164
Administrative		
General Services	24	28
Plant Operations & Services	20	23
Total Administrative	44	51
TOTAL BUILDINGS	342	443

Source: Facilities Planning & Construction
(Data as of September 1, 2006)

LAND INVENTORY

ACREAGE OWNED	
New Castle County	
Newark Campus Total	970
Wilmington	34
Other	168
Total New Castle County	1,172
Kent County	
Dover	5
Clayton	297
Total Kent County	302
Sussex County	
Georgetown Substation	347
Rehoboth	141
Lewes	69
Indian River	10
Total Sussex County	567
TOTAL ACREAGE	2,041

Source: Facilities Planning & Construction
(Data as of September 1, 2006)

UNIVERSITY LIBRARY

Facilities and Services

The University of Delaware Library includes the Morris Library, where the main collection is housed, three branch libraries located in Newark – the Agriculture Library, the Chemistry Library, and the Physics Library, and a fourth branch library – the Marine Studies Library in Lewes, Delaware.

The collections of the University of Delaware Library parallel the University's academic interests and support all disciplines. Books, periodicals, electronic journals, databases and software, microforms, government publications, maps, manuscripts, media, and Internet access provide a major academic resource for the University of Delaware, the surrounding community, the State of Delaware, and the nation.

The University of Delaware Library is a depository library for U.S. government publications, a patent depository for U.S. patents and a repository for State of Delaware publications. Library staff members provide a wide range of services including reference assistance, circulation, interlibrary loan, instructional programs and assistance to users with disabilities.

The Morris Library, the central library where the main collection is housed, seats over 3,000 persons. The University of Delaware Library is a member of the Association of Research Libraries, the Center for Research Libraries, CIRLA (the Chesapeake Information and Research Library Alliance), and PALINET through which it is connected online to OCLC, the Online Computer Library Center.

For Library hours, call 302-831-BOOK or check the Library Web Site at:
<http://www.lib.udel.edu/>

Size of Collections (2005/06)

Books and bound periodicals.....	over 2,700,000
Microforms.....	over 3,400,000
Databases (titles in Databases list).....	over 240
Current journals and newspapers (Accessible via the Full Text Databases and Electronic Journals lists).....	over 40,000
Subject guides to Internet resources.....	over 105

Use Statistics (2005/06)

Items loaned.....	over 370,000
Items used on site.....	over 240,000
Individuals entering the Morris Library.....	nearly 760,000
Hits on Library website.....	over 52,000,000

In addition to seating more than 3,000 persons, the Morris Library provides wireless access in most areas, special purpose space for computer-based systems, more than 200 computer workstations accessible to users, more than 200 laptop connections for University of Delaware users to connect personal laptops (including all graduate student carrels), a current periodical reading room, self-service photocopiers, and microform reader/printers including a digital microform workstation. The Morris Library also provides a large reserve reading room, small research study rooms for which faculty may request use, a computing site, a GIS workstation, special equipment and areas to assist users with disabilities, a media area and viewing room, small group study rooms for student use, a handsome Special Collections area including an exhibition gallery, a reading room with a controlled environmental system for rare materials, and many other areas and services.

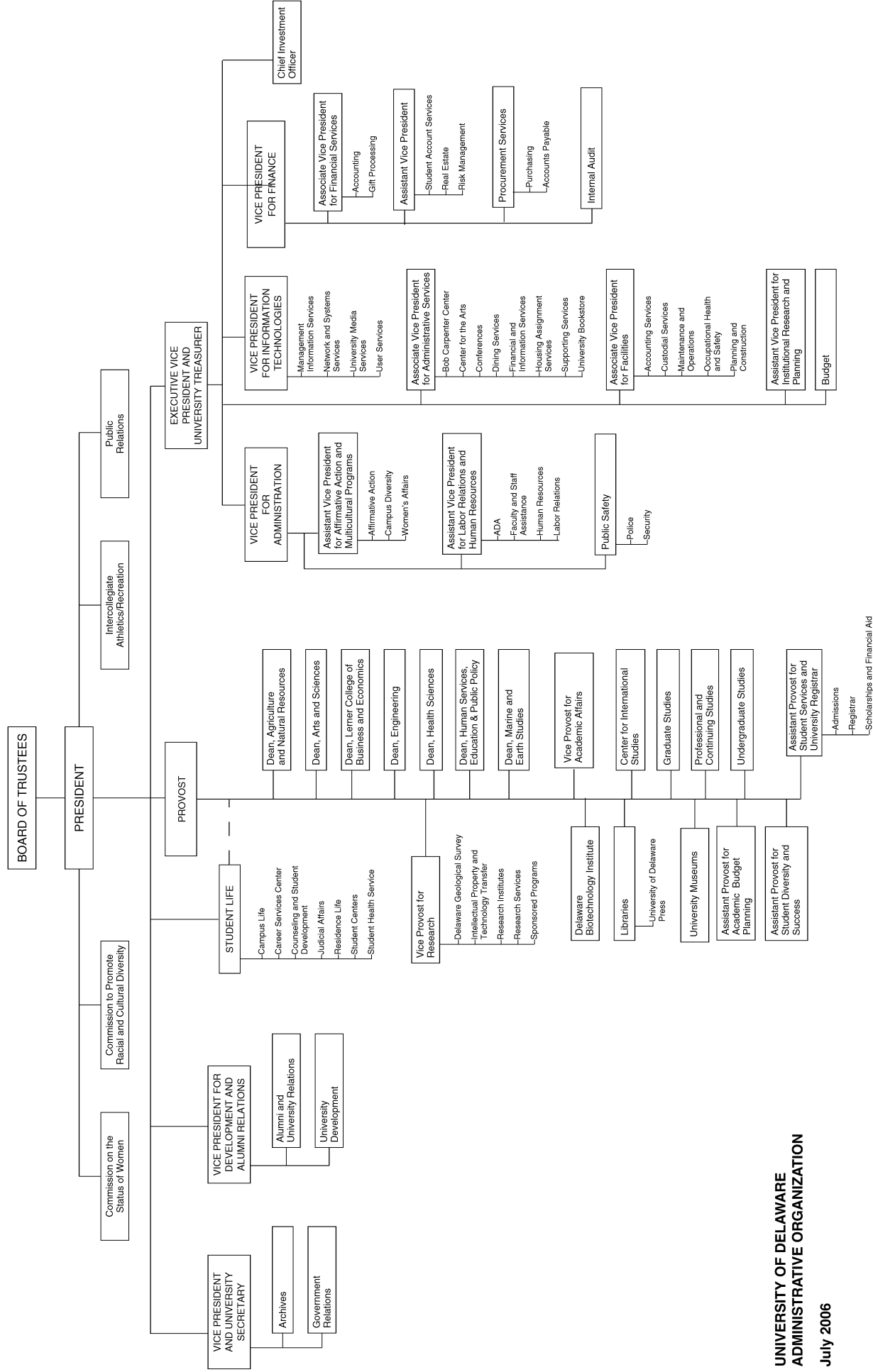
Electronic Library Resources

The University of Delaware Library provides online electronic access to networked and digital information including: journal article references and abstracts; full-text electronic articles; a full-text encyclopedia; government information; thousands of electronic journals; maps and many other items. Databases provide access to more than 230 networked databases for University of Delaware faculty, students, and staff. The Library Web Site is accessible at:

<http://www.lib.udel.edu/>

DELICAT is the University of Delaware Library online catalog and contains information about the library collection and also provides links to electronic journals and other resources. DELICAT may be accessed from anywhere in the world via the Web.

The Library Web Site serves as a gateway research tool and provides gateway access to electronic resources on the Web including electronic access to resources that are locally licensed for University of Delaware faculty, students, and staff only. The Library Web Site is also available from the University of Delaware Web Site (<http://www.udel.edu/>).



NOTES

AN EQUAL OPPORTUNITY/AFFIRMATIVE ACTION EMPLOYER—The University of Delaware is committed to assuring equal opportunity to all persons and does not discriminate on the basis of race, color, gender, religion, ancestry, national origin, sexual orientation, veteran status, age, or disability in its educational programs, activities, admissions, or employment practices as required by Title IX of the Education Amendments of 1972, Title VI of the Civil Rights Act of 1964, the Rehabilitation Act of 1973, the Americans with Disabilities Act, other applicable statutes and University policy. Inquiries concerning these statutes and information regarding campus accessibility should be referred to the Affirmative Action Officer, 305 Hulliher Hall, (302) 831-2835 (voice), (302) 831-4563 (TDD).