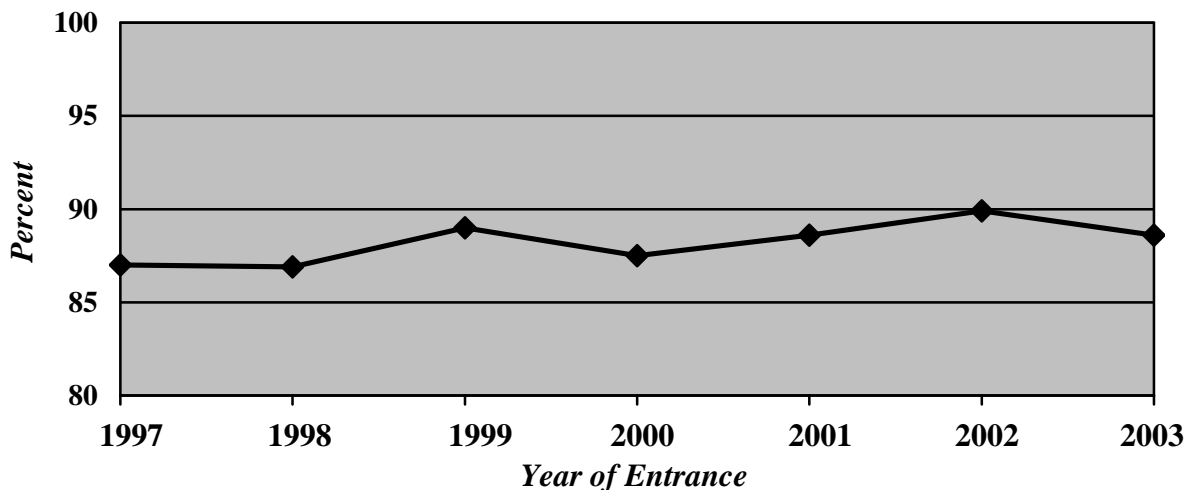


## RATE OF ATTRITION BY YEAR OF ENTRANCE NEW FRESHMEN OF *FALL 1997 - 2003*

	1997	1998	1999	2000	2001	2002	2003
<b>Total # of Freshmen</b>	<b>3,180</b>	<b>3,545</b>	<b>3,513</b>	<b>3,128</b>	<b>3,358</b>	<b>3,400</b>	<b>3,433</b>
% Attrition by 2nd Fall	13.0	13.1	11.0	12.5	11.4	10.1	11.4
% Attrition 2nd-3rd Fall	7.7	7.1	7.3	6.8	6.8	5.6	-
% Attrition 3rd-4th Fall	1.8	1.3	2.3	1.5	1.2	-	-
Cumulative % Attrition (1st to 4th Fall)	22.5	21.5	20.6	20.8	-	-	-

*Note: All entering new freshman cohorts adjusted to comply with IPEDS Graduation Rate Survey Definitions (includes first-time, full-time freshmen only).*

### TRENDS IN FRESHMAN TO SOPHOMORE YEAR RETENTION



Source: Office of Institutional Research & Planning