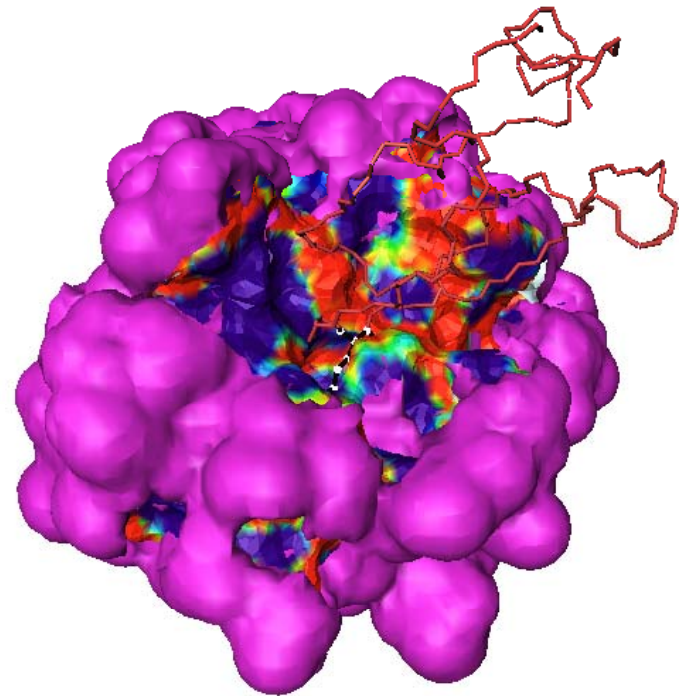


What is this?

Trypsin



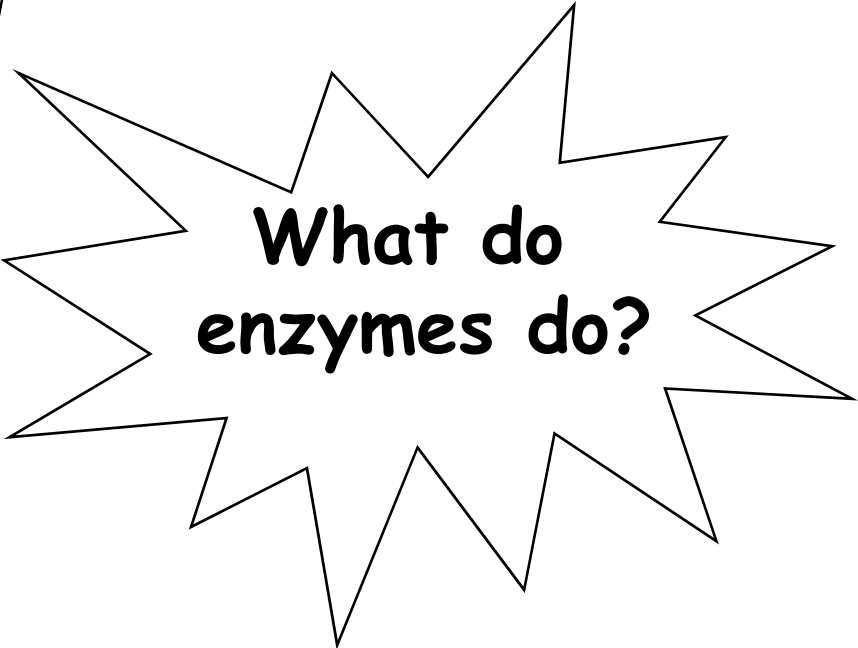
What is
trypsin?

Protease



**What is
a protease?**

Enzyme



**What do
enzymes do?**

**How do we use
trypsin in the
lab?**

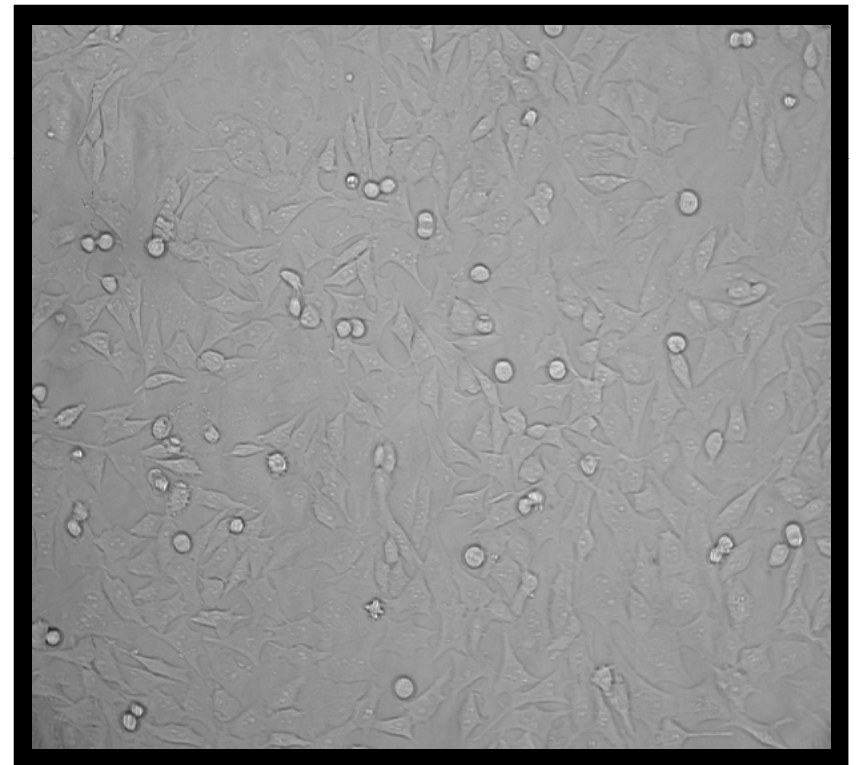
**To detach cell monolayer from
their culture surface**



T75cm² flask



**35mm culture
dish**



**ATDC5 cells attached to 35mm
cell culture dish**

Options for detaching cells:

1. Allows cells to sit with occasional tapping the side of the flask--
TAKES TOO LONG!

2. Scrape-- *WHAT IF I "HURT" THE CELLS*

3. **Apply Trypsin--***SOUNDS GOOD TO ME!!!*



Cell scrapper



Trypsin

Let's try to detach cells using
trypsin...does the enzyme live up
to its role to speed up a
reaction?