

# **Delawareans' Attitudes toward Economic Growth: Survey Results for 2000**

**Choices for Delaware  
Life and the Economy in 2000 and Beyond**

**Presented by  
Edward C. Ratledge**

**Center for Applied Demography and Survey Research, University of Delaware**

# Survey Footnotes

Survey conducted April 2000

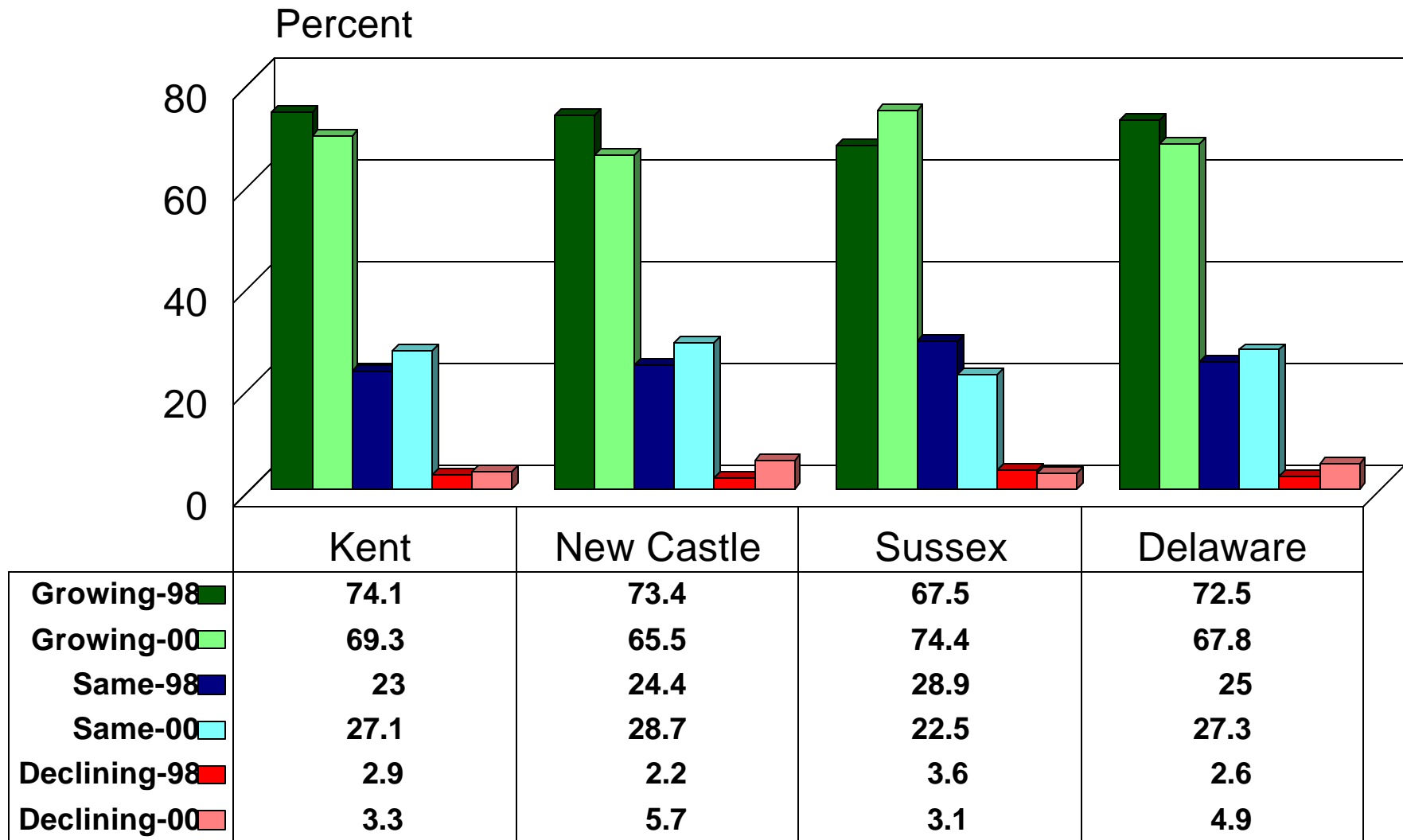
Data gathered by telephone using professional interviewers

Random-digit dialing and within household randomization

911 interviews with at least 300 from each county

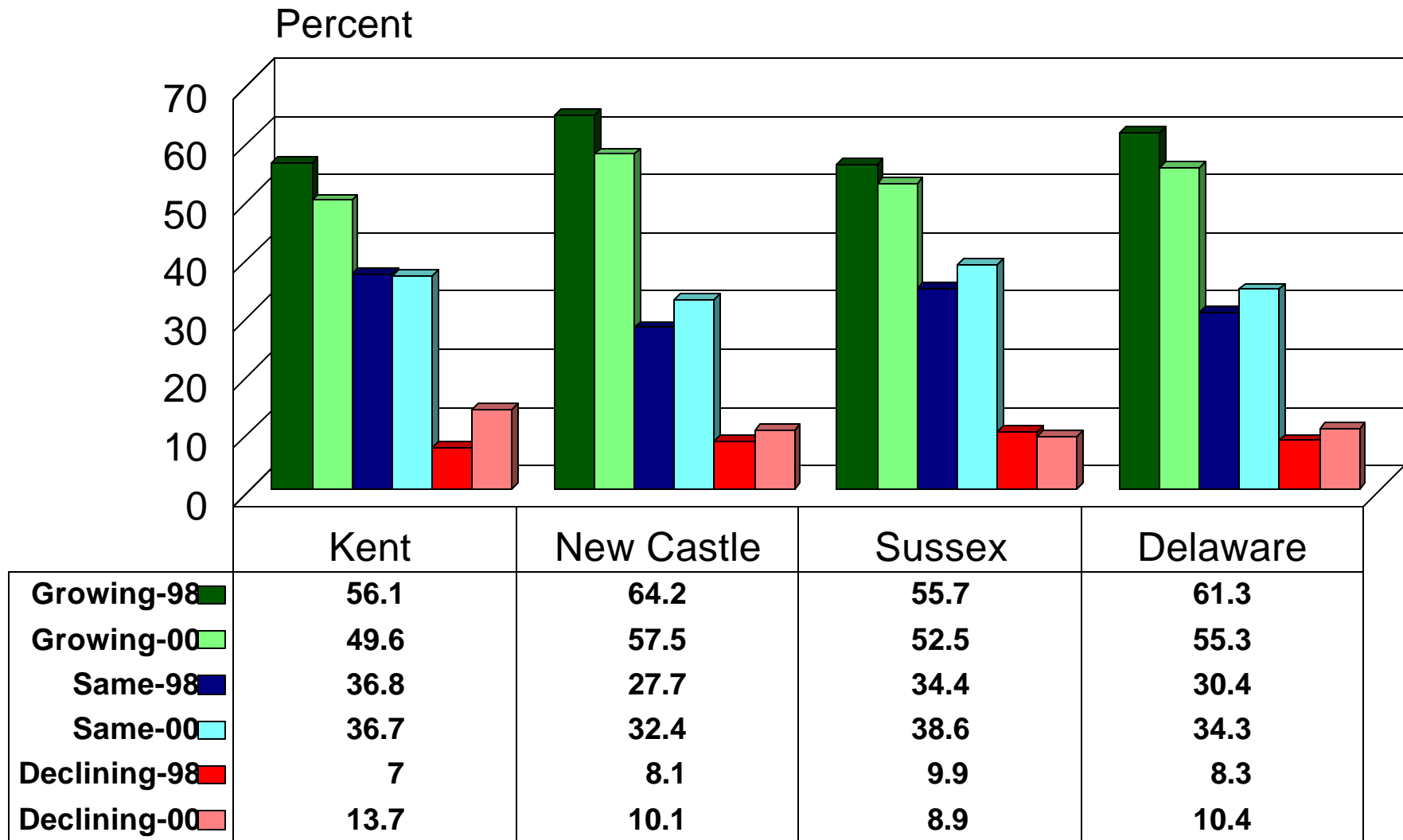
Accuracy at least +/- 5%

# How is Delaware's Economy Changing? by County 1998/2000



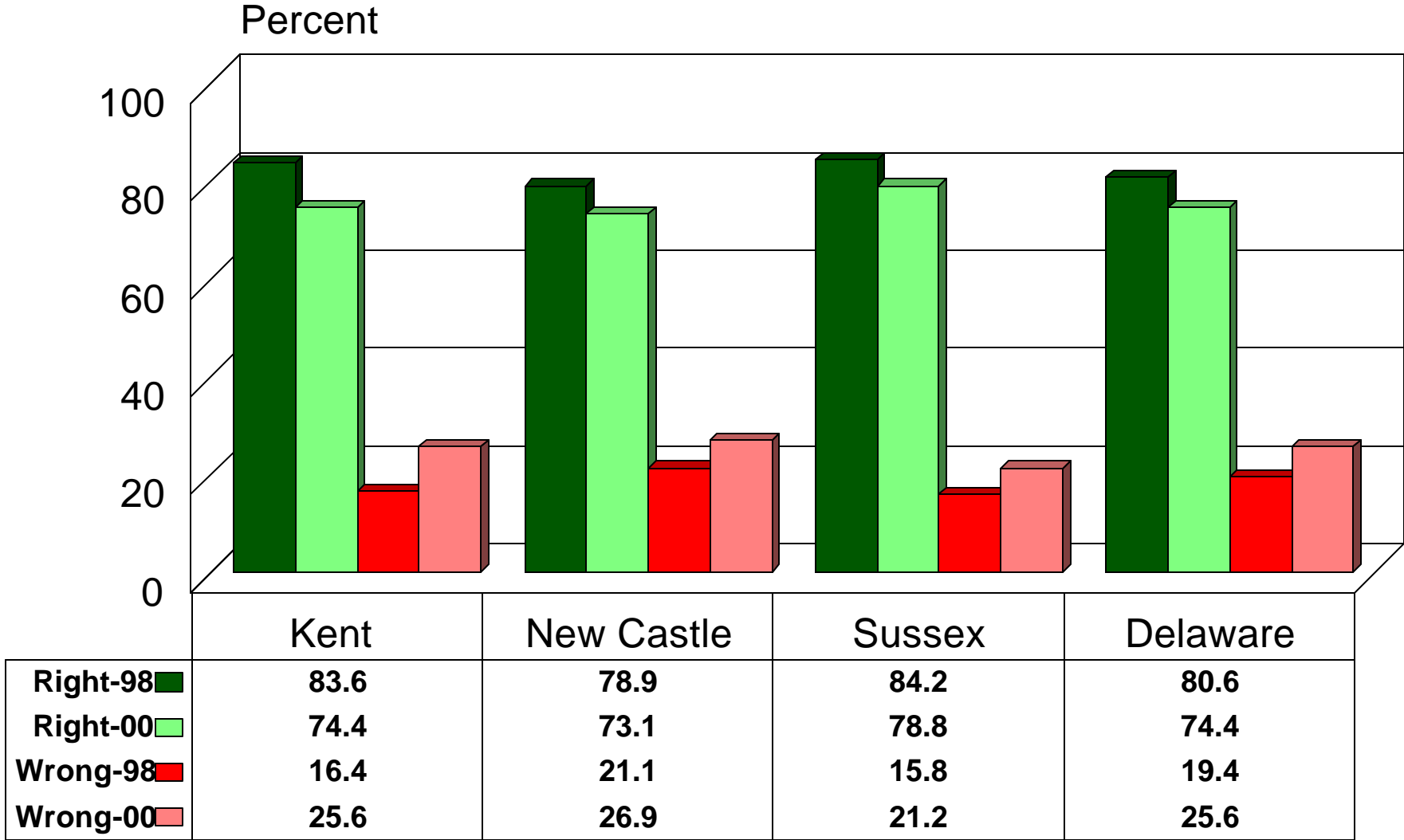
Source: Center for Applied Demography & Survey Research, University of Delaware

# How are Job Opportunities Changing? by County 1998/2000



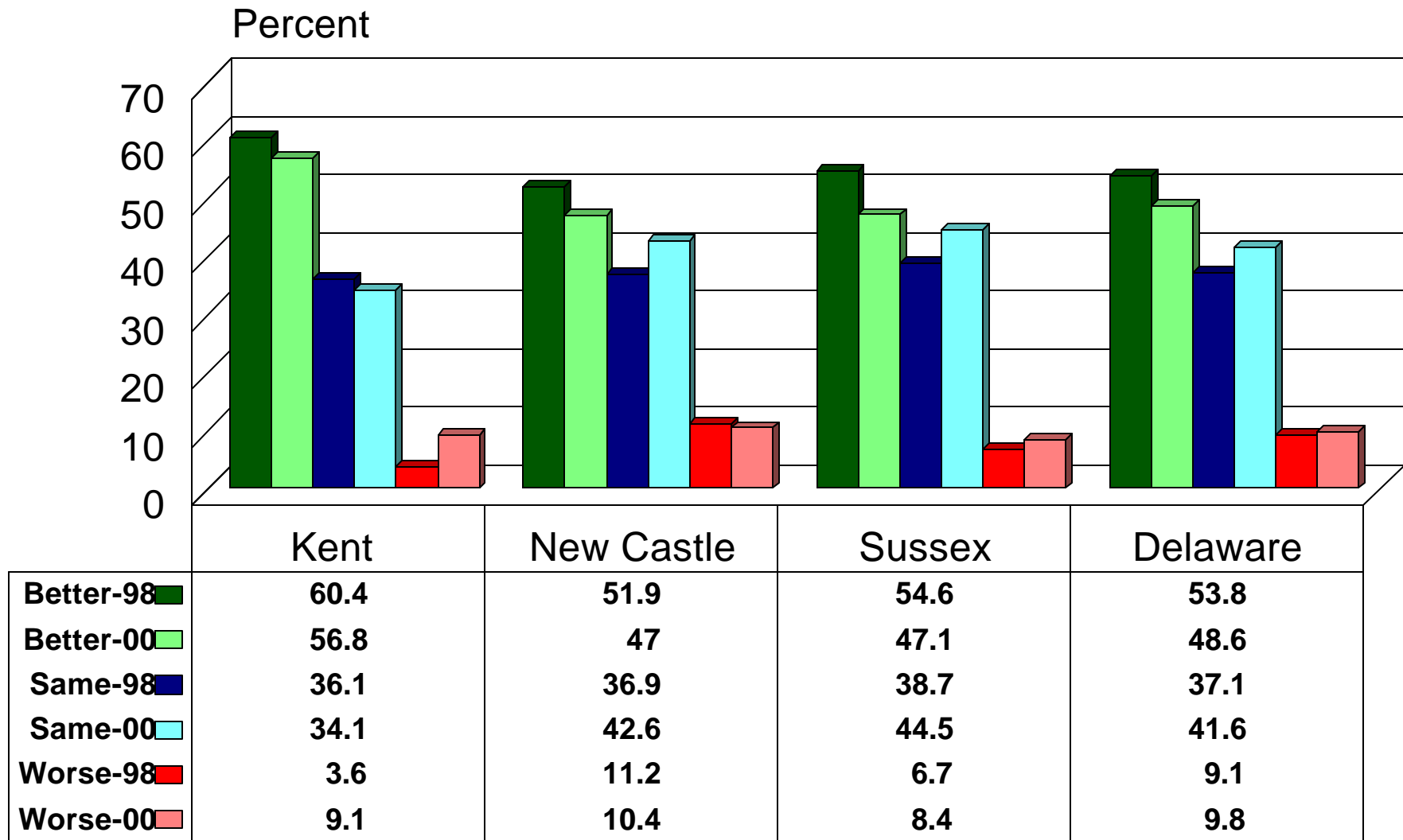
Source: Center for Applied Demography & Survey Research, University of Delaware

# Do you Feel Delaware is on the Right or Wrong Track? by County 1998/2000



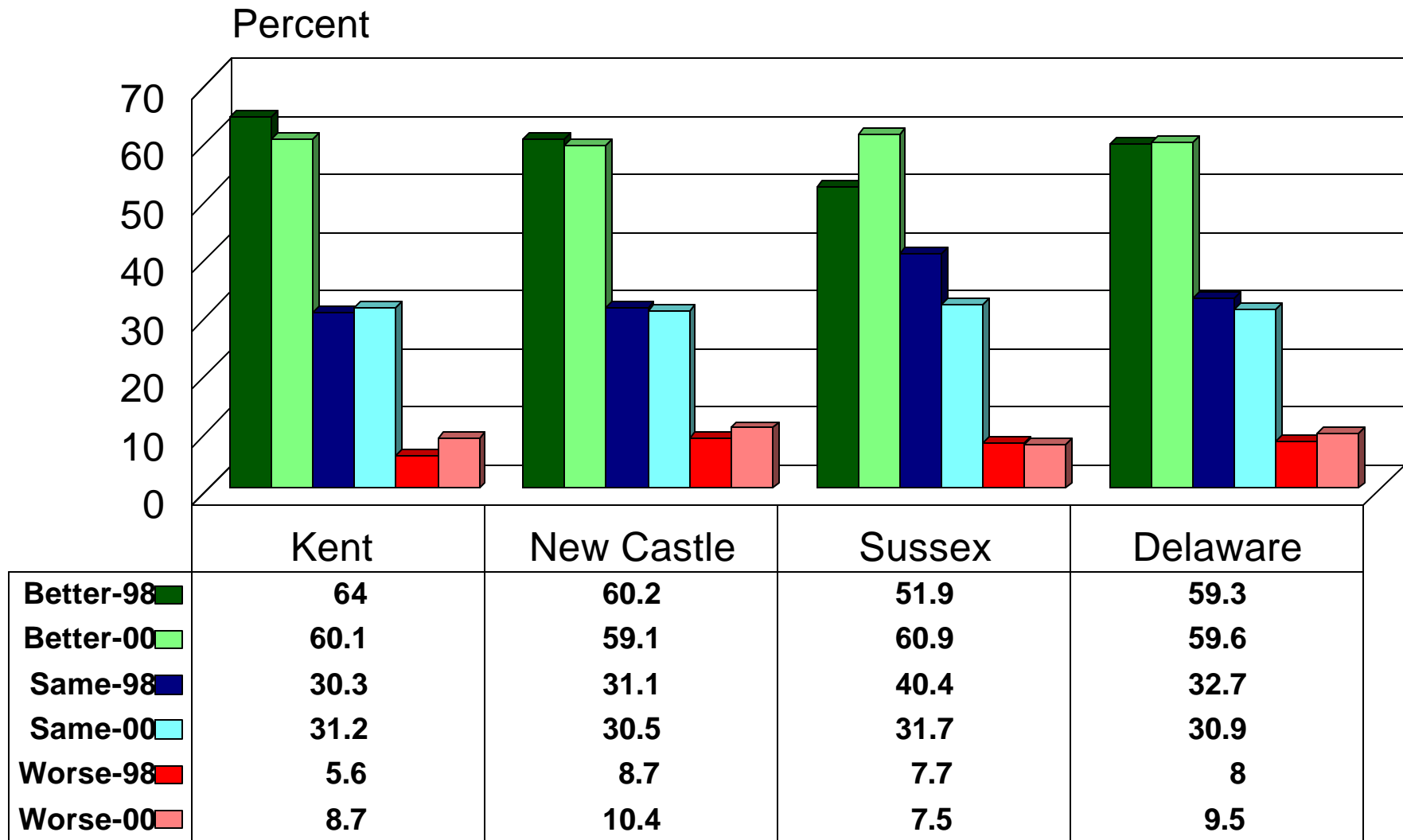
Source: Center for Applied Demography & Survey Research, University of Delaware

# Is Delaware Better Off than Five Years Ago? by County 1998/2000



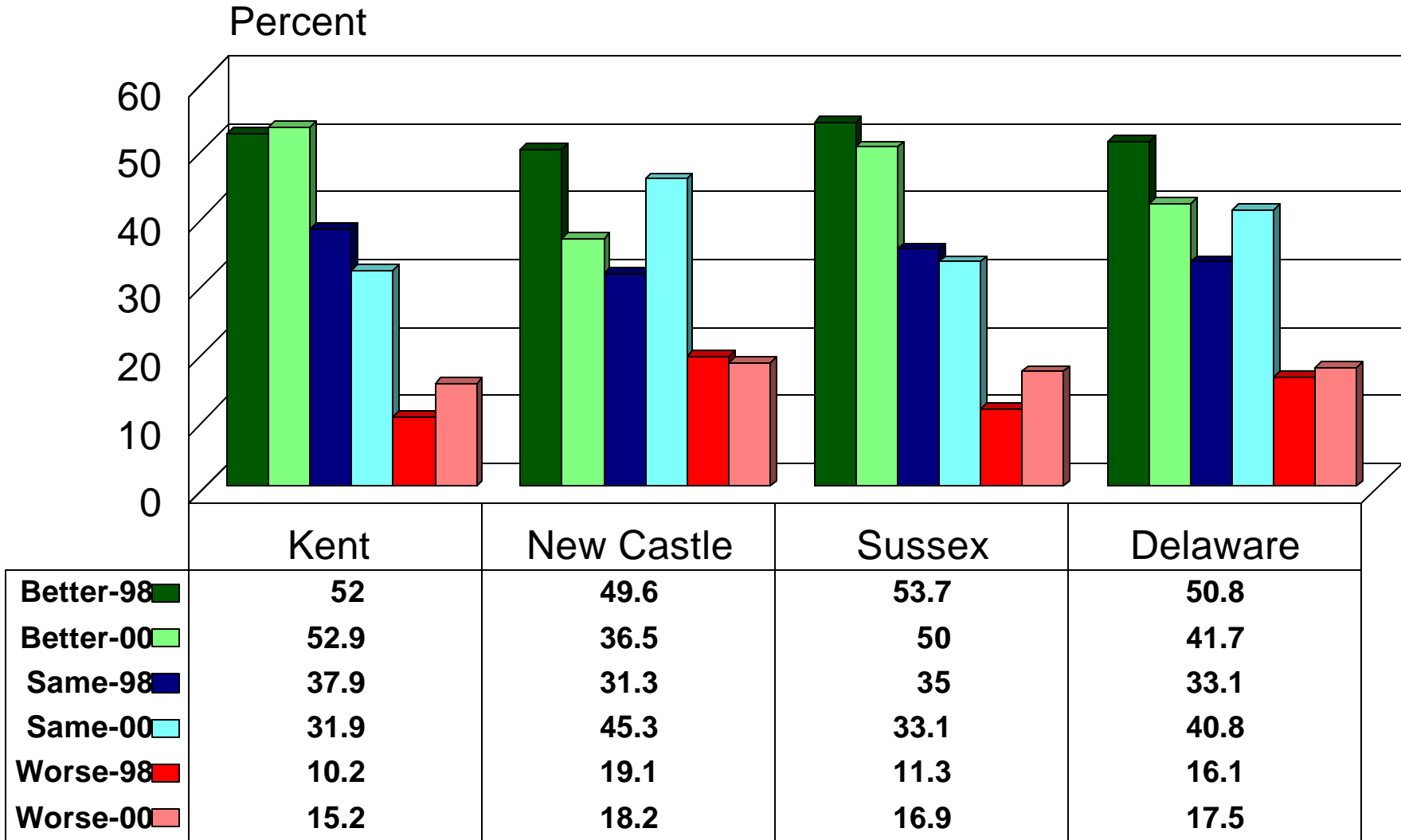
Source: Center for Applied Demography & Survey Research, University of Delaware

# Are You Better Off than Five Years Ago? by County 1998/2000



Source: Center for Applied Demography & Survey Research, University of Delaware

# Quality of Life in Delaware Five Years From Now by County 1998/2000

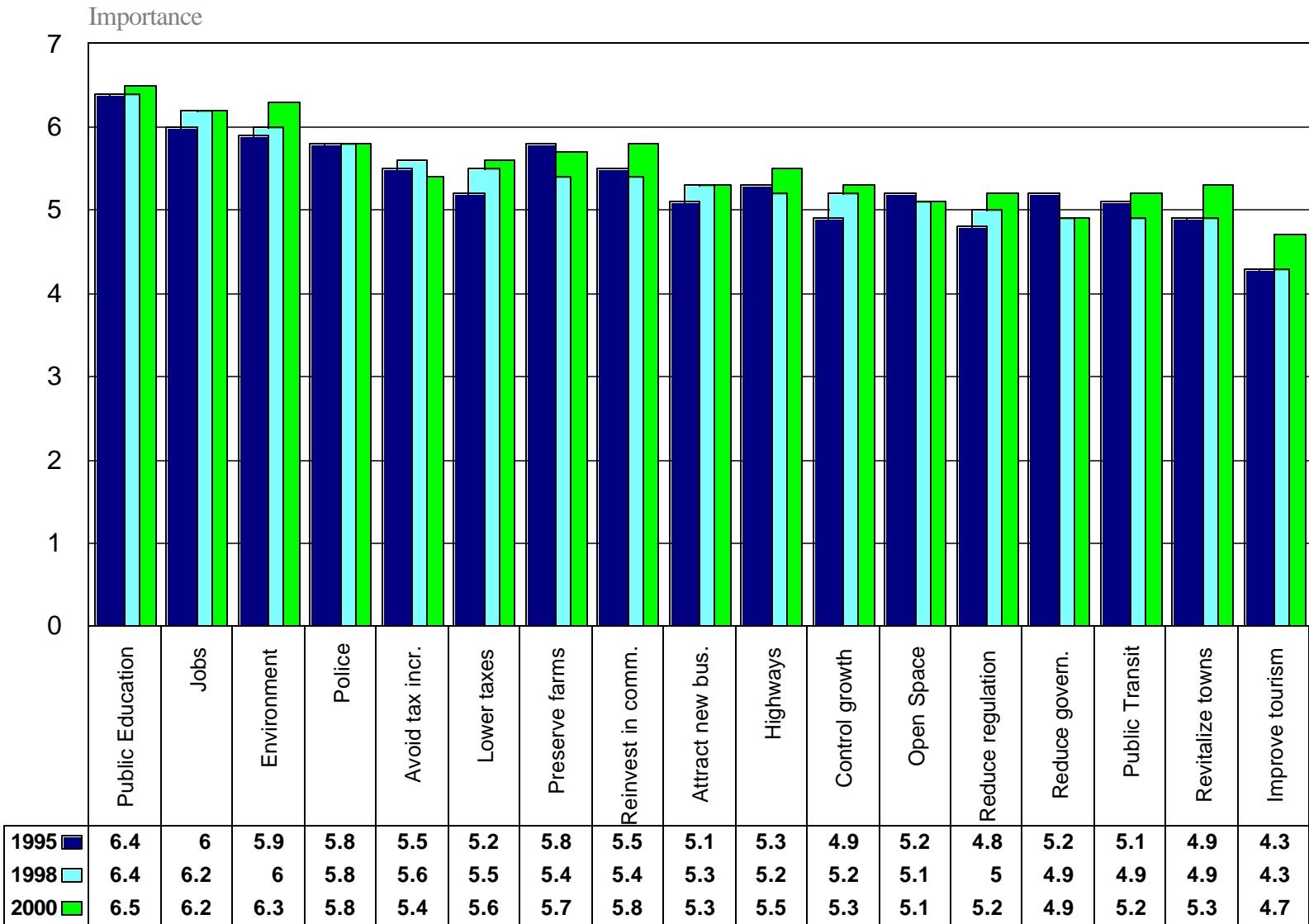


Source: Center for Applied Demography & Survey Research, University of Delaware



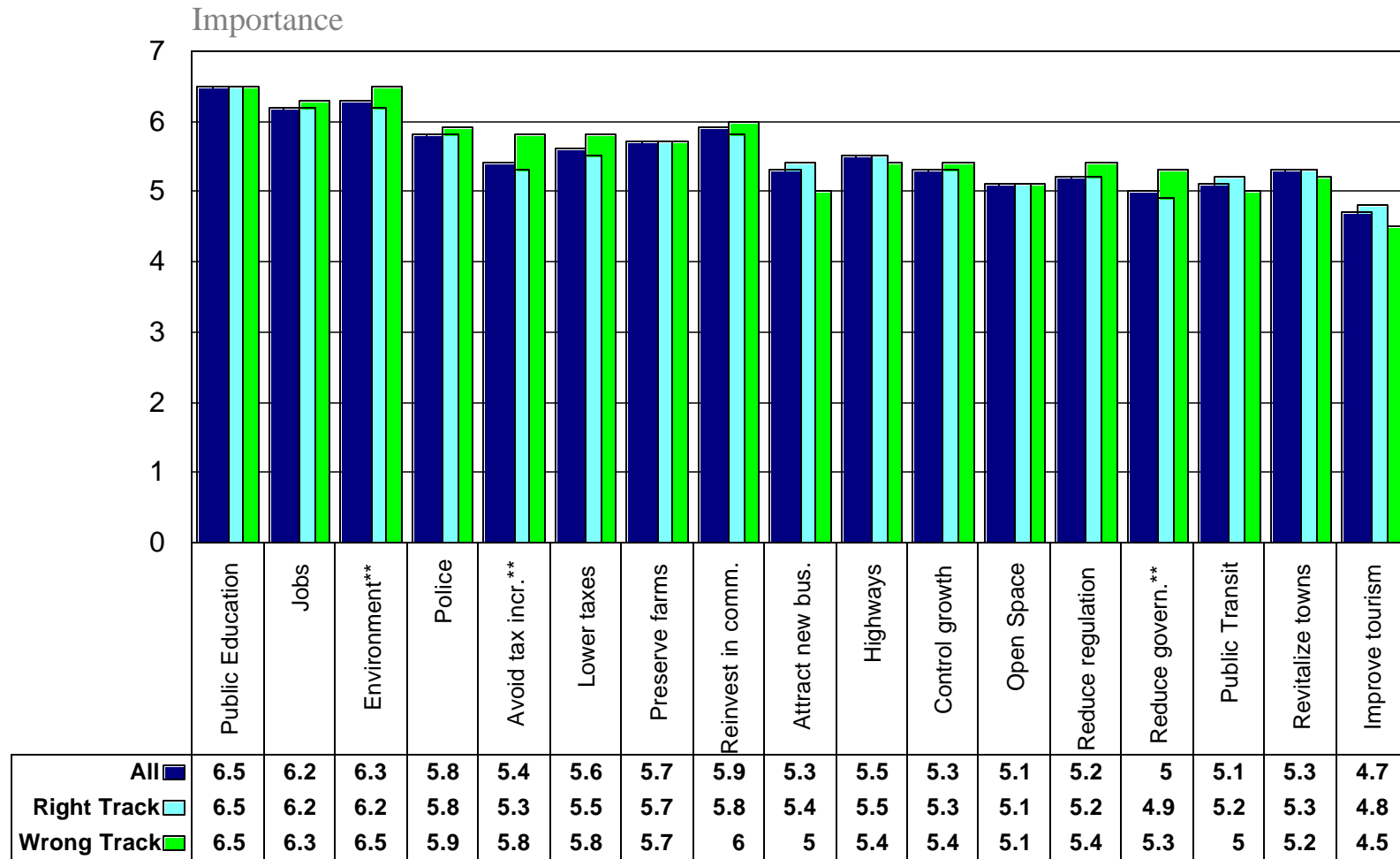
# State Priorities

## Delaware 1995-2000



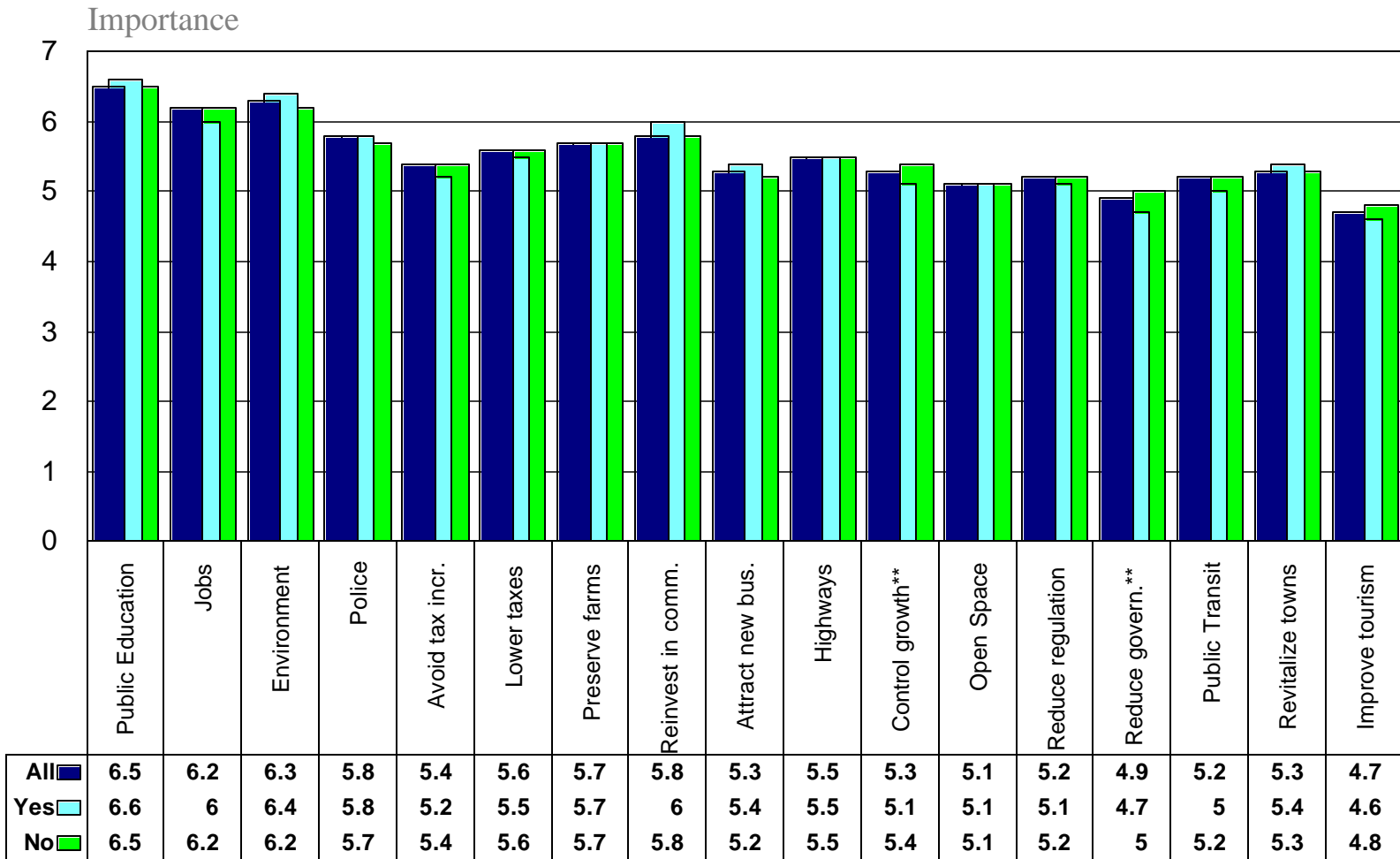
Source: Center for Applied Demography and Survey Research, University of Delaware

# State Priorities 2000 by Delaware's Direction



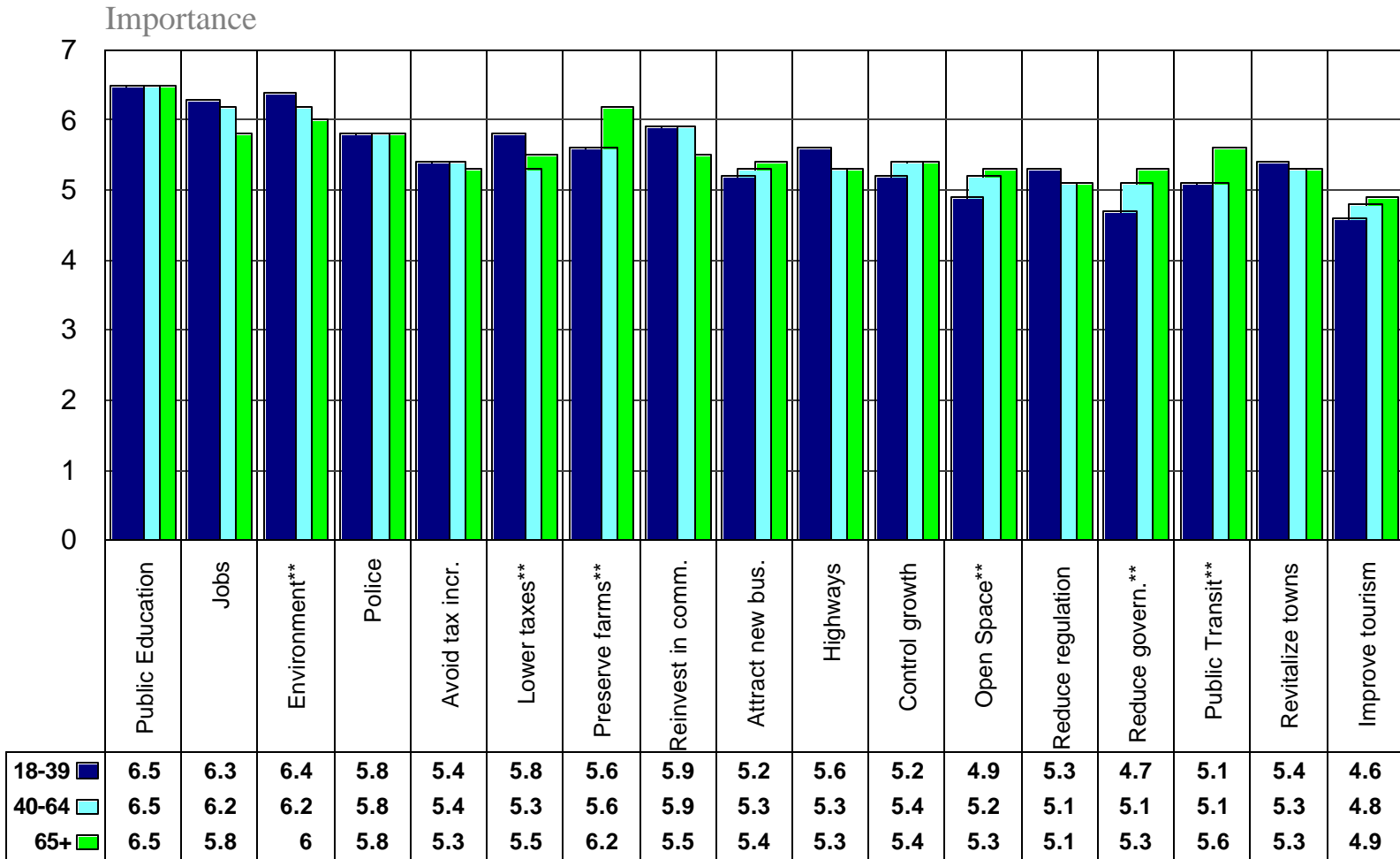
\*\* Significant Difference

# State Priorities 2000 by Resident in 1990



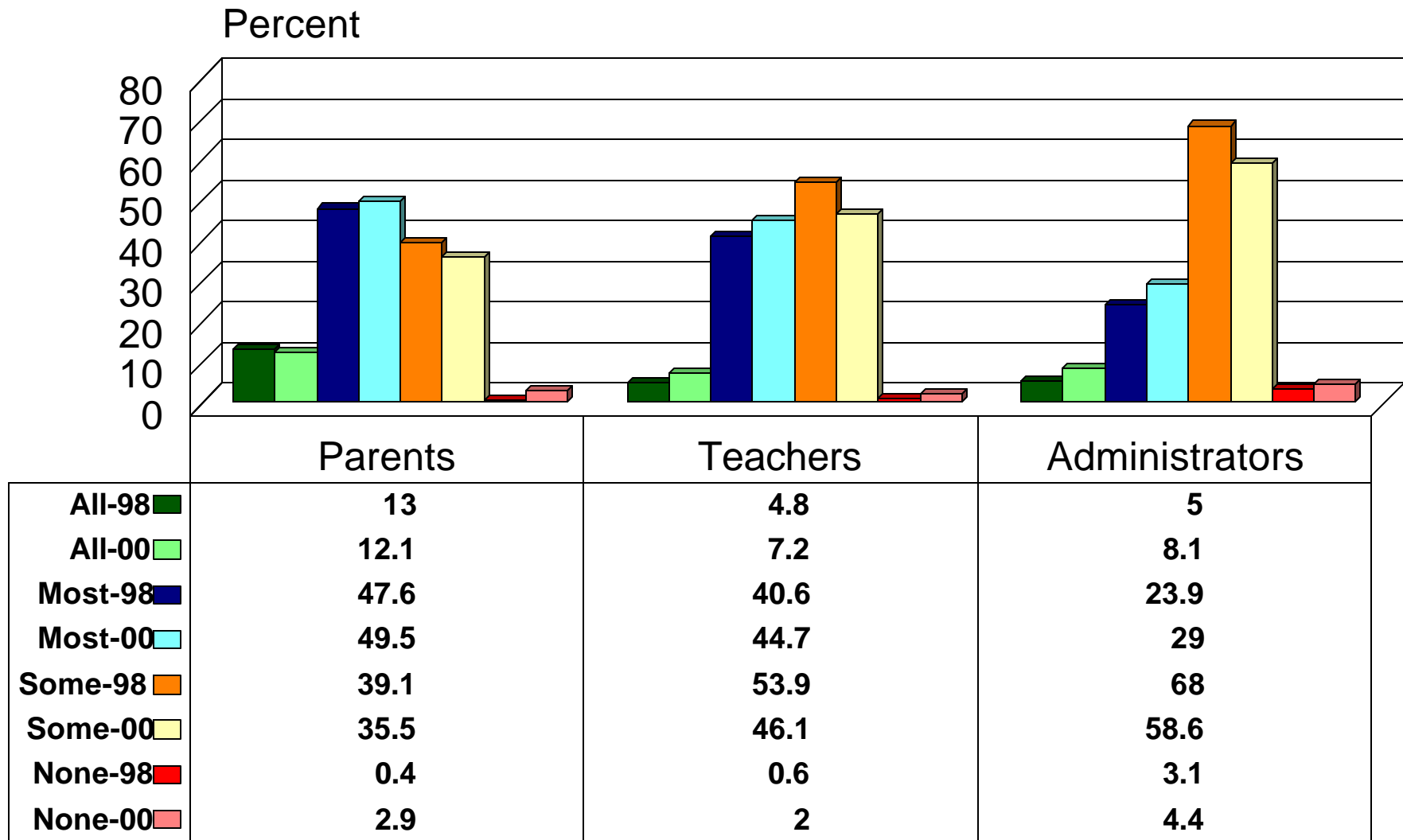
\*\* Significant Difference

# State Priorities 2000 by Age Group



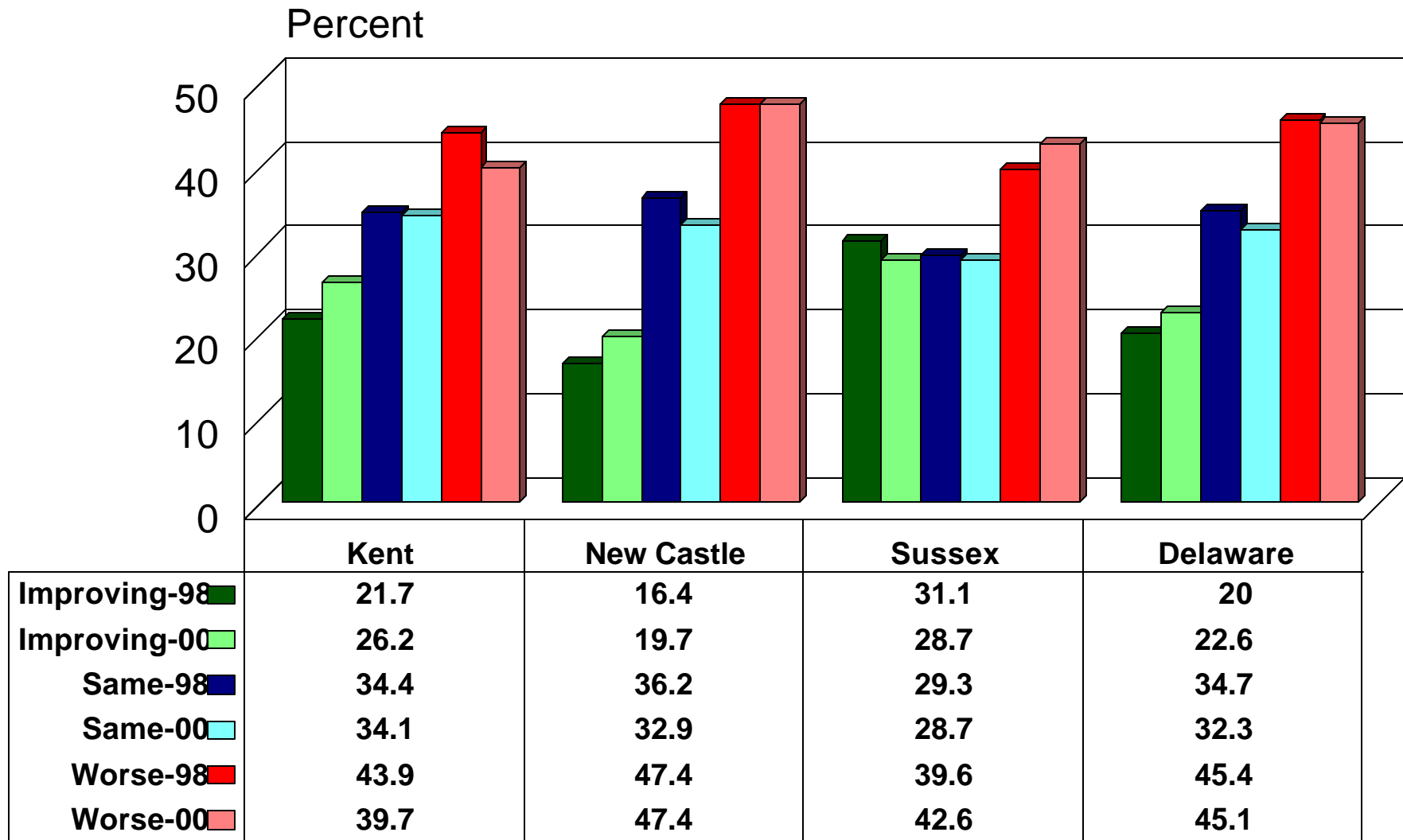
\*\* Significant Difference

# Responsibility for Academic Performance in Delaware? by Position 1998/2000



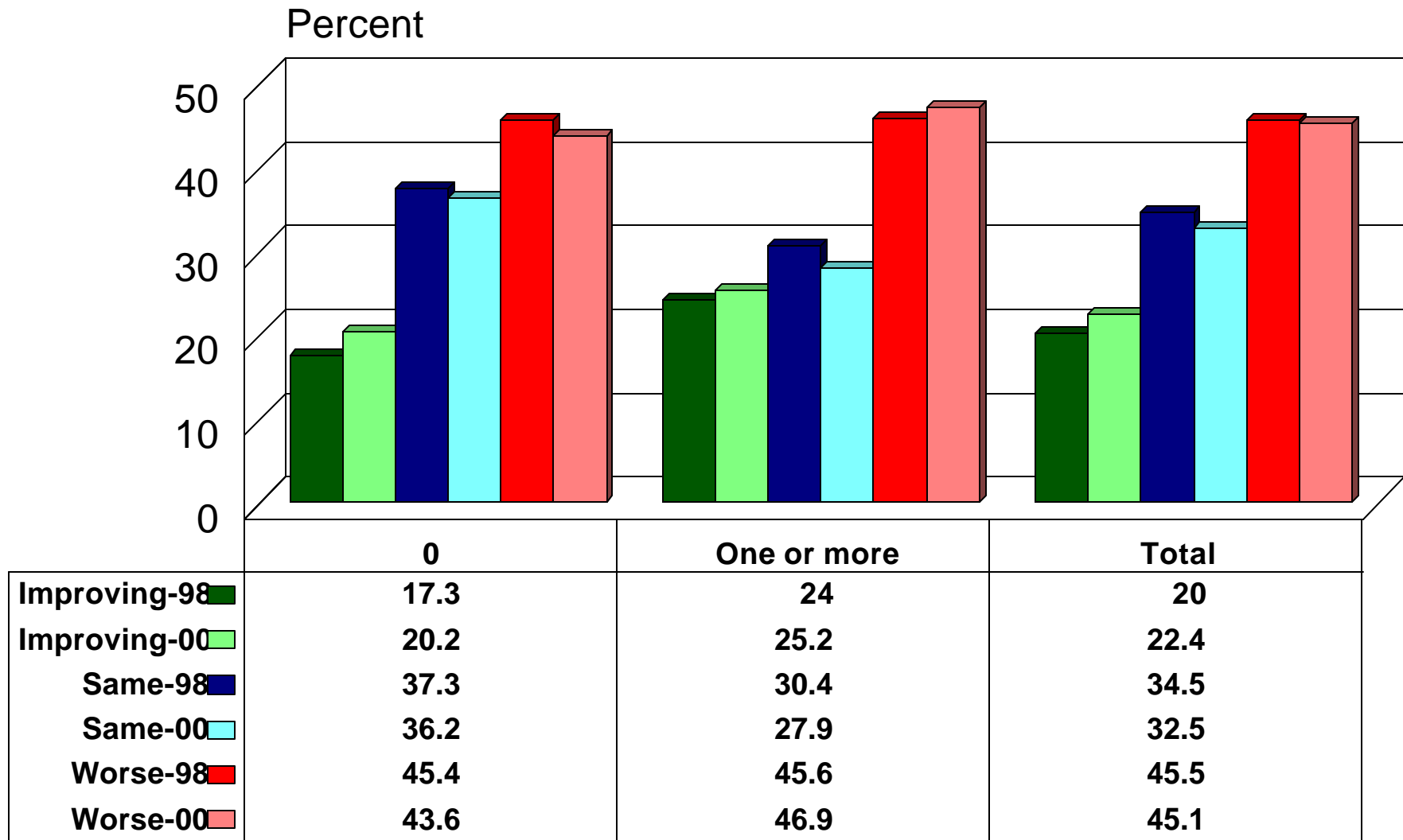
Source: Center for Applied Demography & Survey Research, University of Delaware

# Compared to Five Years Ago How are the Schools Doing? by County 1998/2000



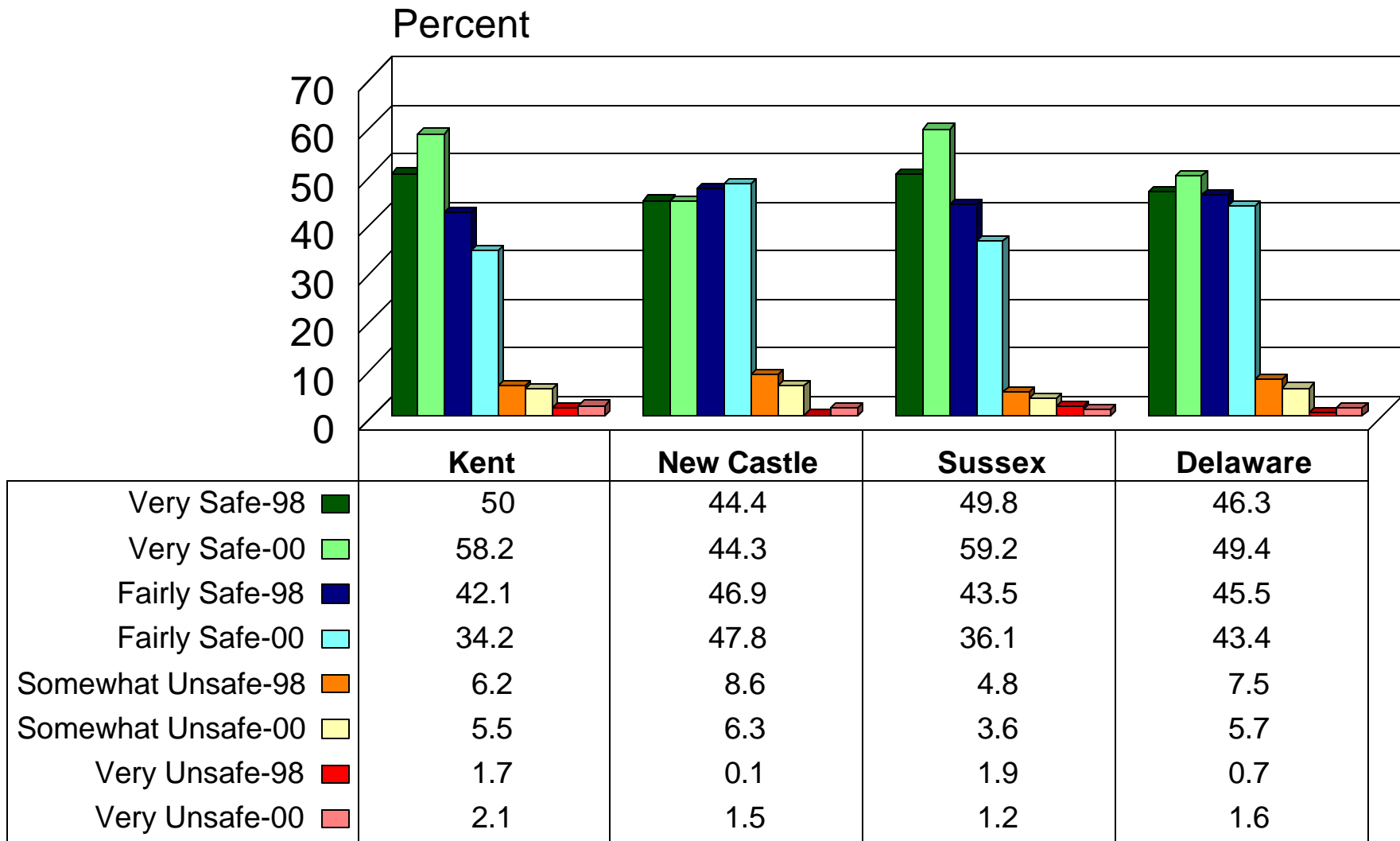
Source: Center for Applied Demography & Survey Research, University of Delaware

# Compared to Five Years Ago How are the Schools Doing? by Persons in Household Under 18: 1998/2000



Source: Center for Applied Demography & Survey Research, University of Delaware

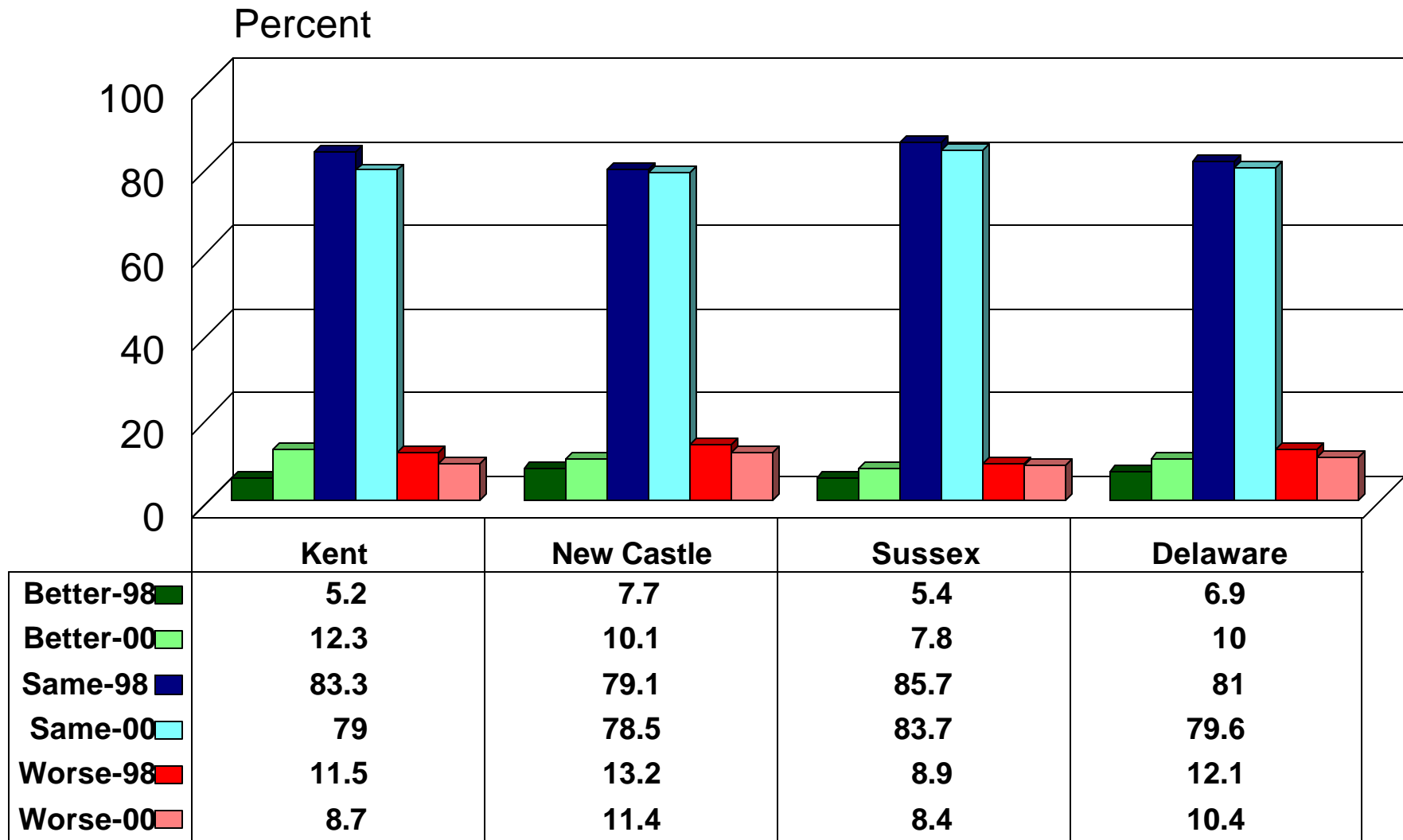
# How Safe is Your Neighborhood? by County 1998/2000



Source: Center for Applied Demography & Survey Research, University of Delaware

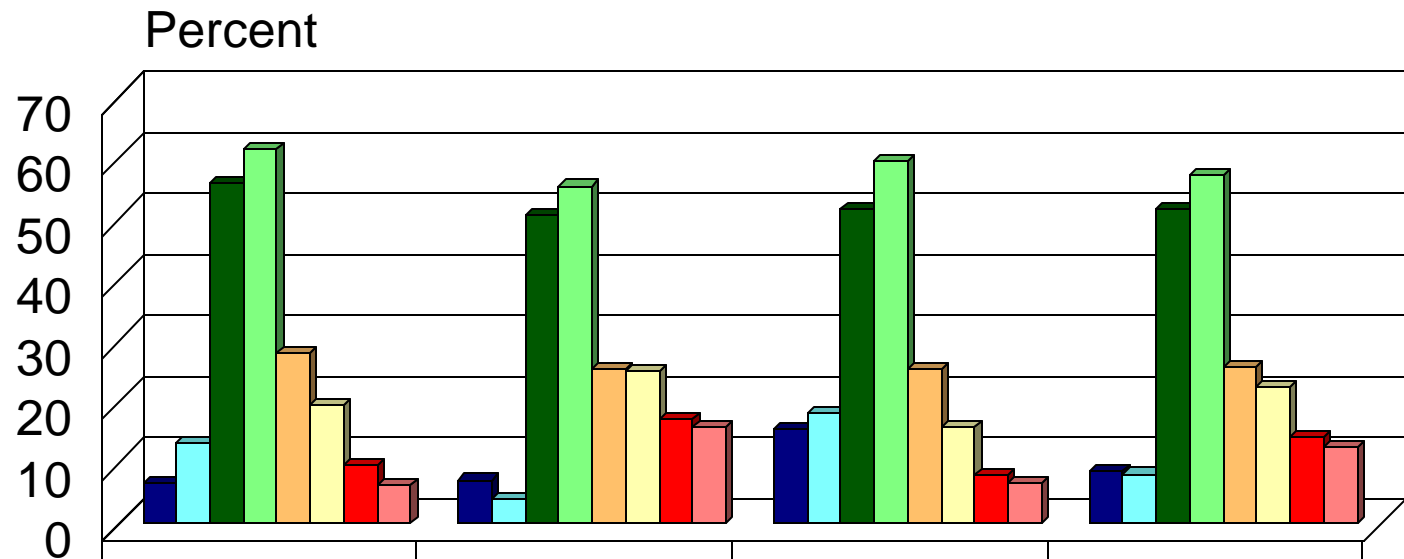


# How Safe is Your Neighborhood Compared to 1 Year Ago? by County 1998/2000



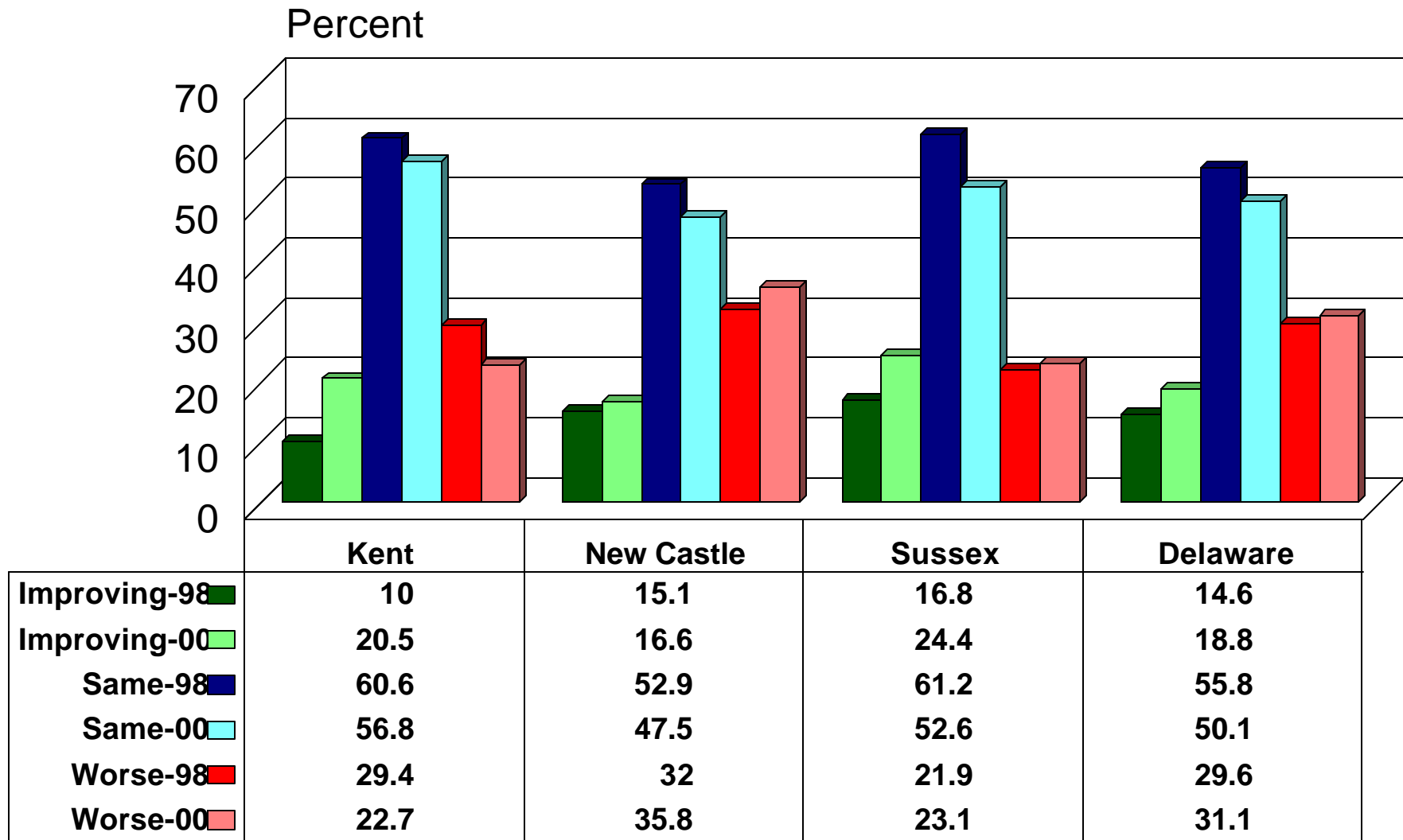
Source: Center for Applied Demography & Survey Research, University of Delaware

# How Healthy is Delaware's Environment? by County 1998/2000



	Kent	New Castle	Sussex	Delaware
Very Healthy-98	6.7	7.1	15.5	8.6
Very Healthy-00	13.1	4	18.2	8.1
Somewhat Healthy-98	55.9	50.5	51.5	51.5
Somewhat Healthy-00	61.4	55.3	59.4	57
Slightly Healthy-98	27.9	25.2	25.2	25.7
Slightly Healthy-00	19.3	25	15.8	22.3
Not Healthy-98	9.5	17.2	7.8	14.2
Not Healthy-00	6.2	15.8	6.7	12.5

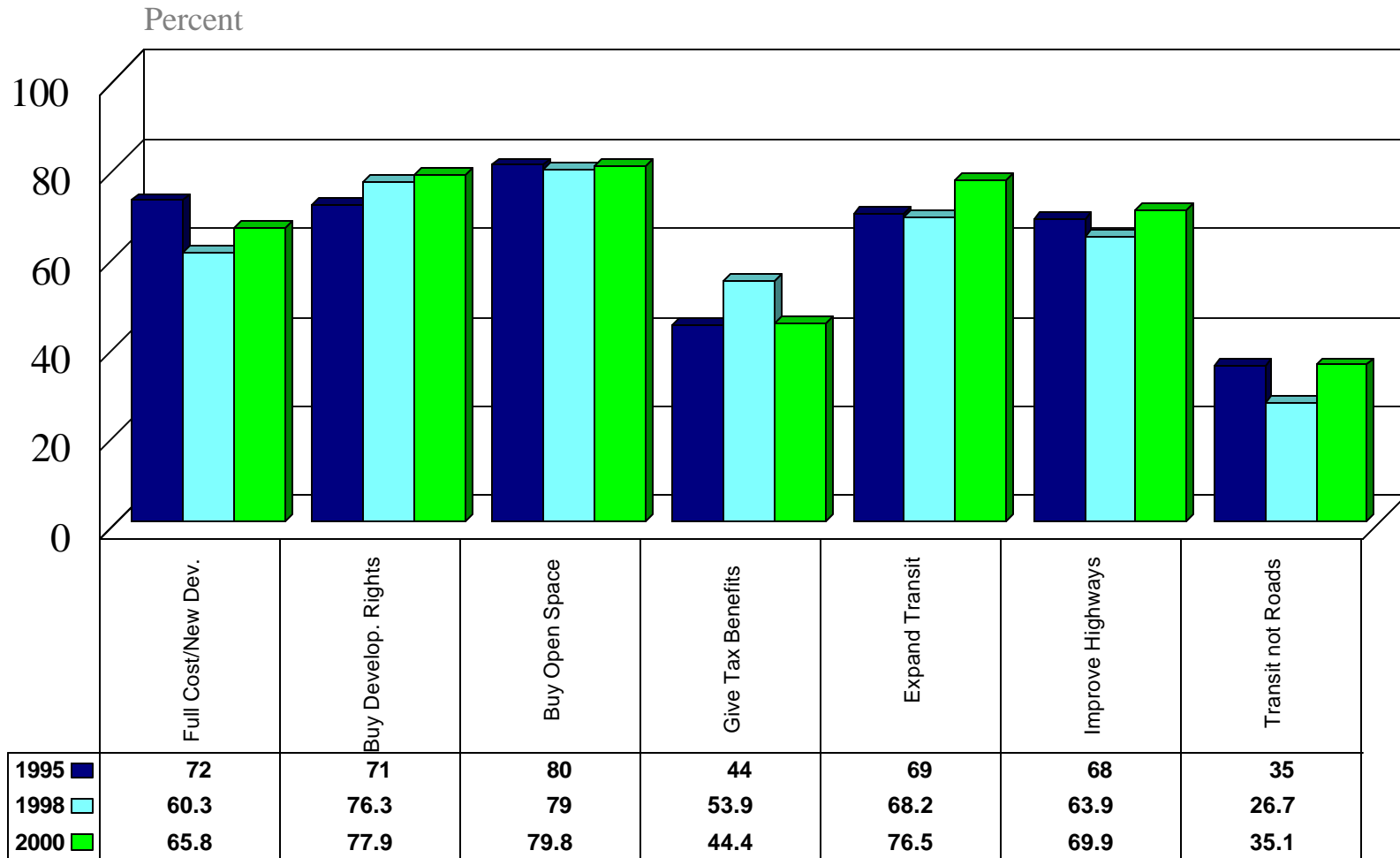
# How is the Environment Compared to Five Years Ago? by County 1998/2000



Source: Center for Applied Demography & Survey Research, University of Delaware

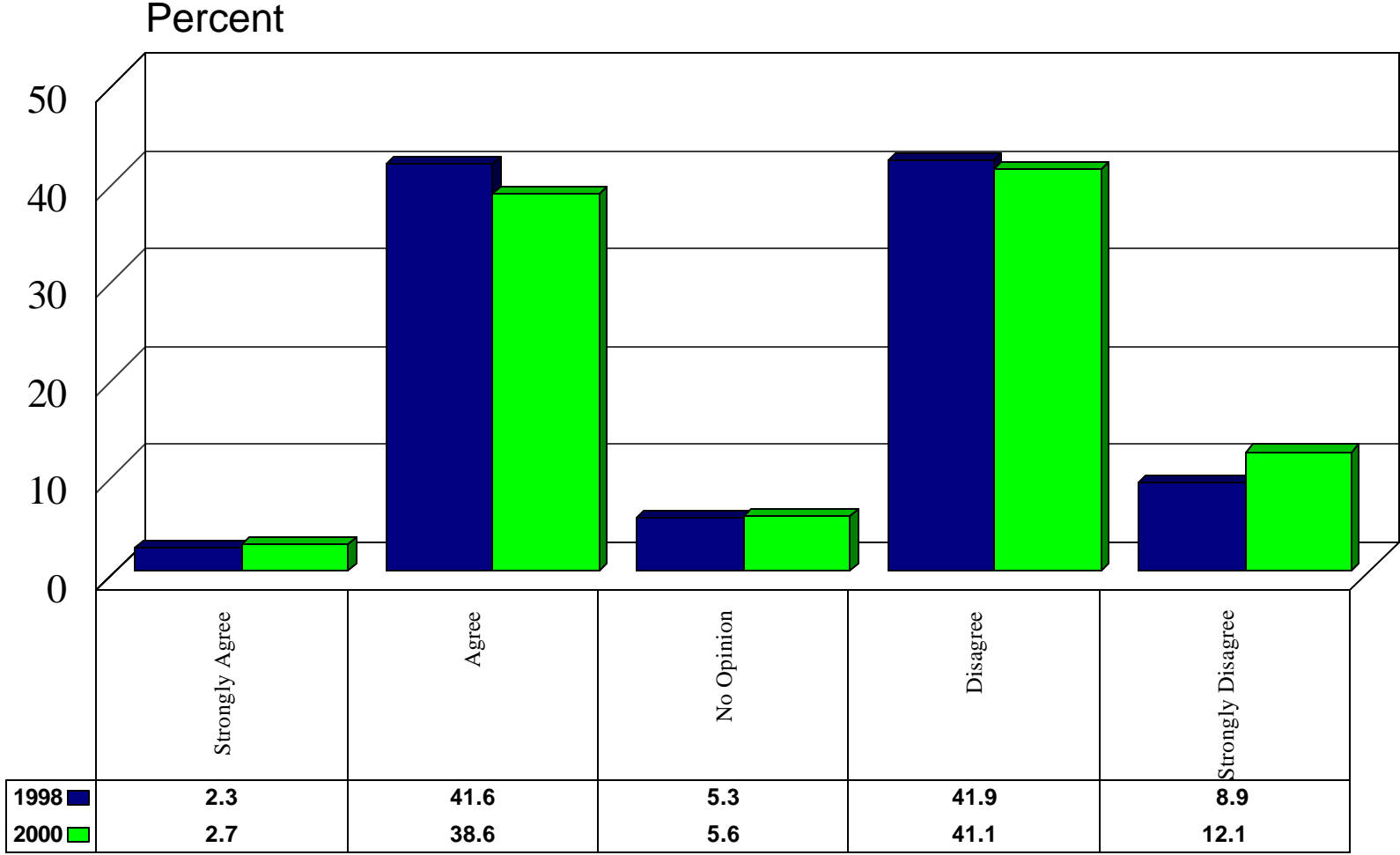
# What Action should be taken?

## Percent Agreeing: 1995-2000



# OK to Expand into Coastal Zone if No Pollution?

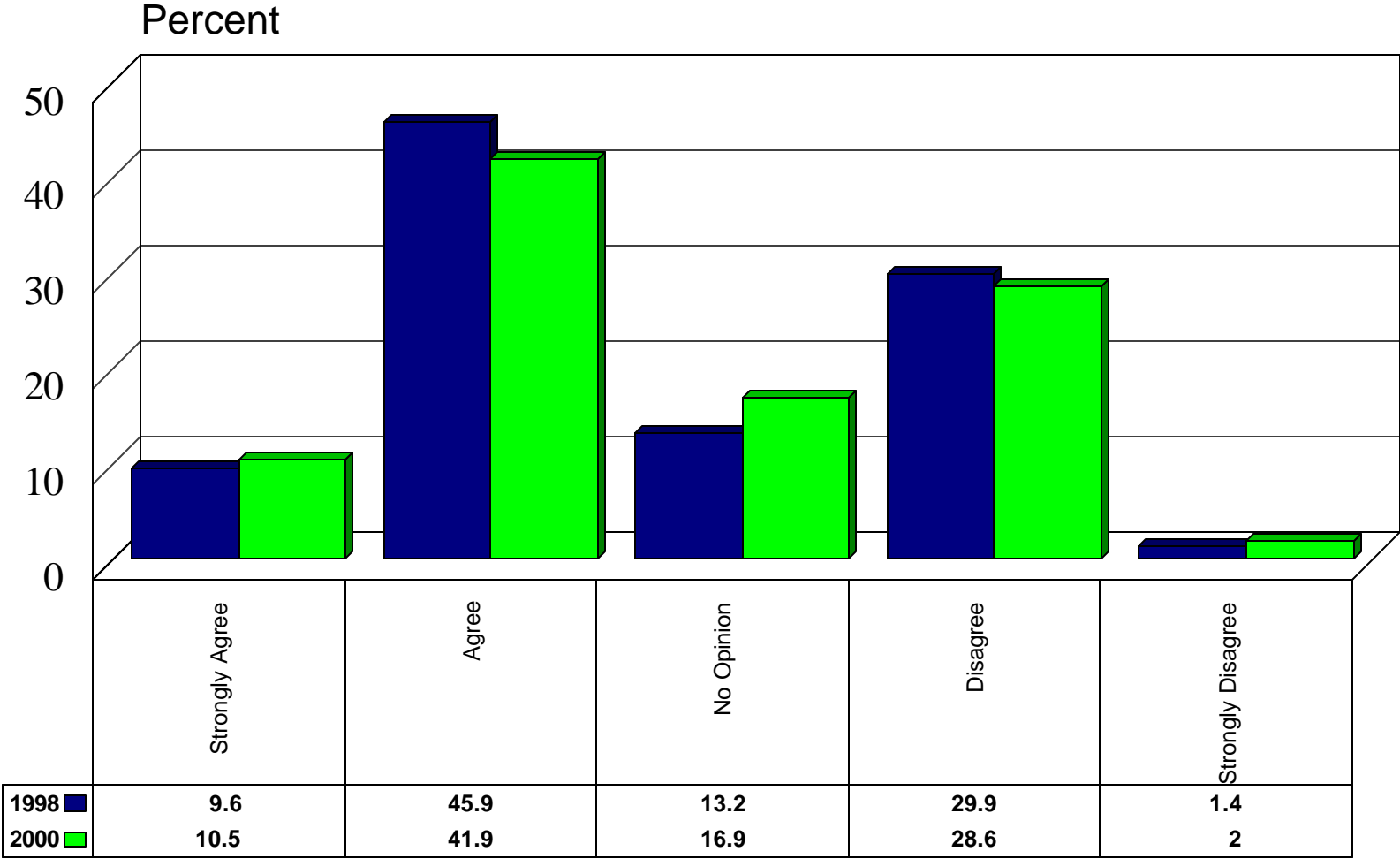
## 1998/2000



Source: Center for Applied Demography and Survey Research, University of Delaware

# Too Much Government Regulation of Business

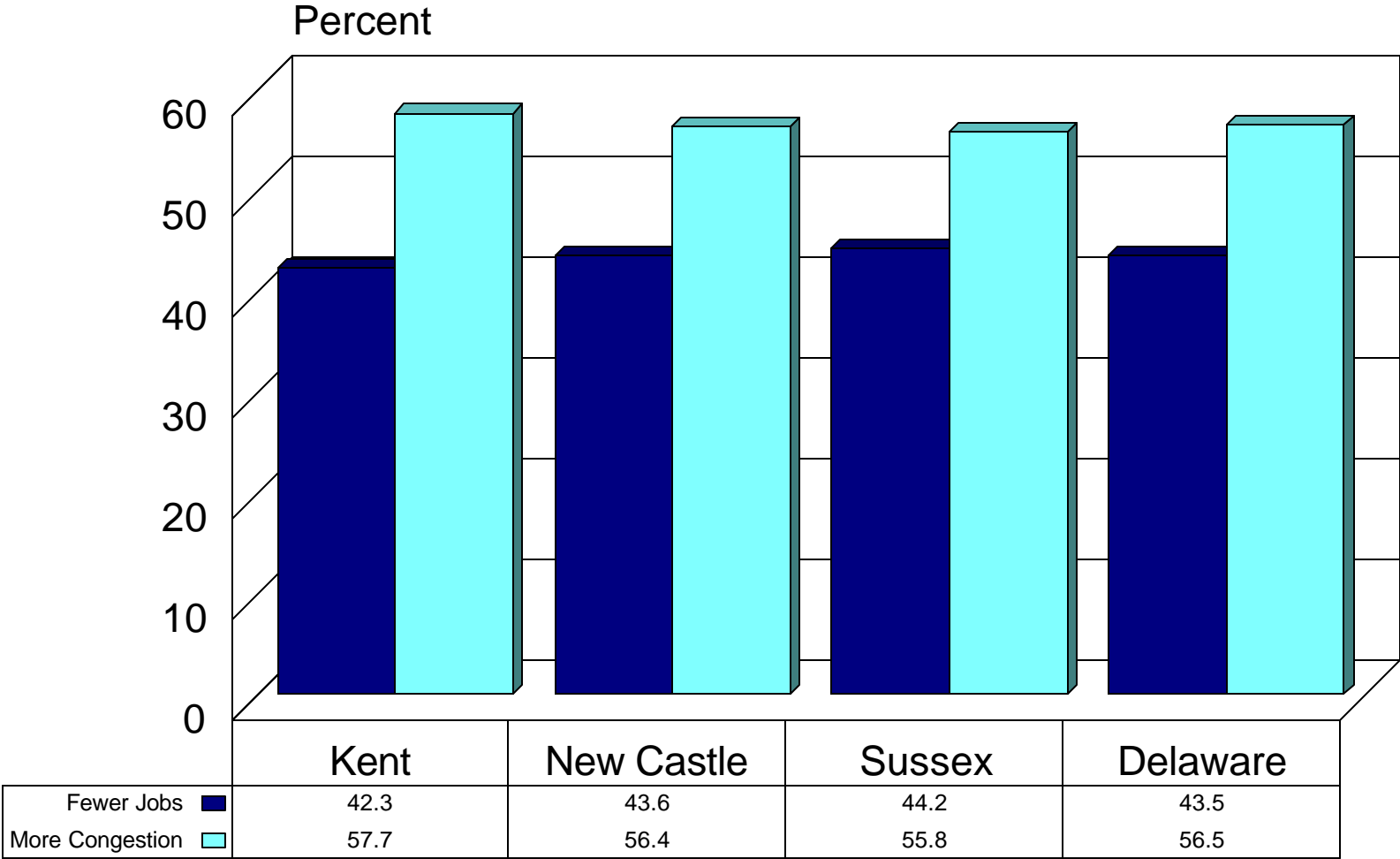
## 1998/2000



Source: Center for Applied Demography and Survey Research, University of Delaware

# Policy Options

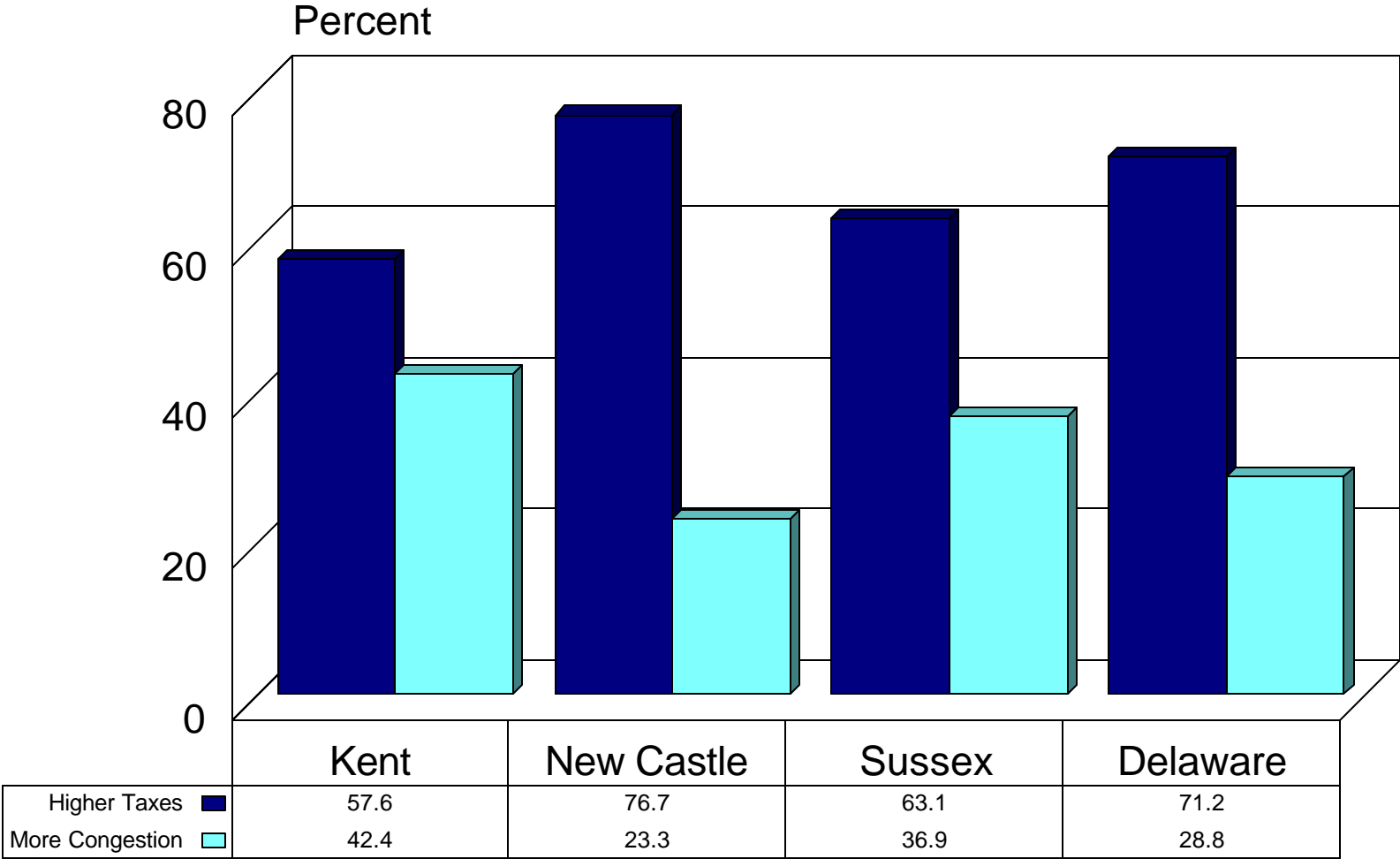
## Choose Fewer Quality Jobs or More Congestion



Source: Center for Applied Demography and Survey Research, University of Delaware

# Policy Options

## Choose Higher Gas Taxes or More Congestion

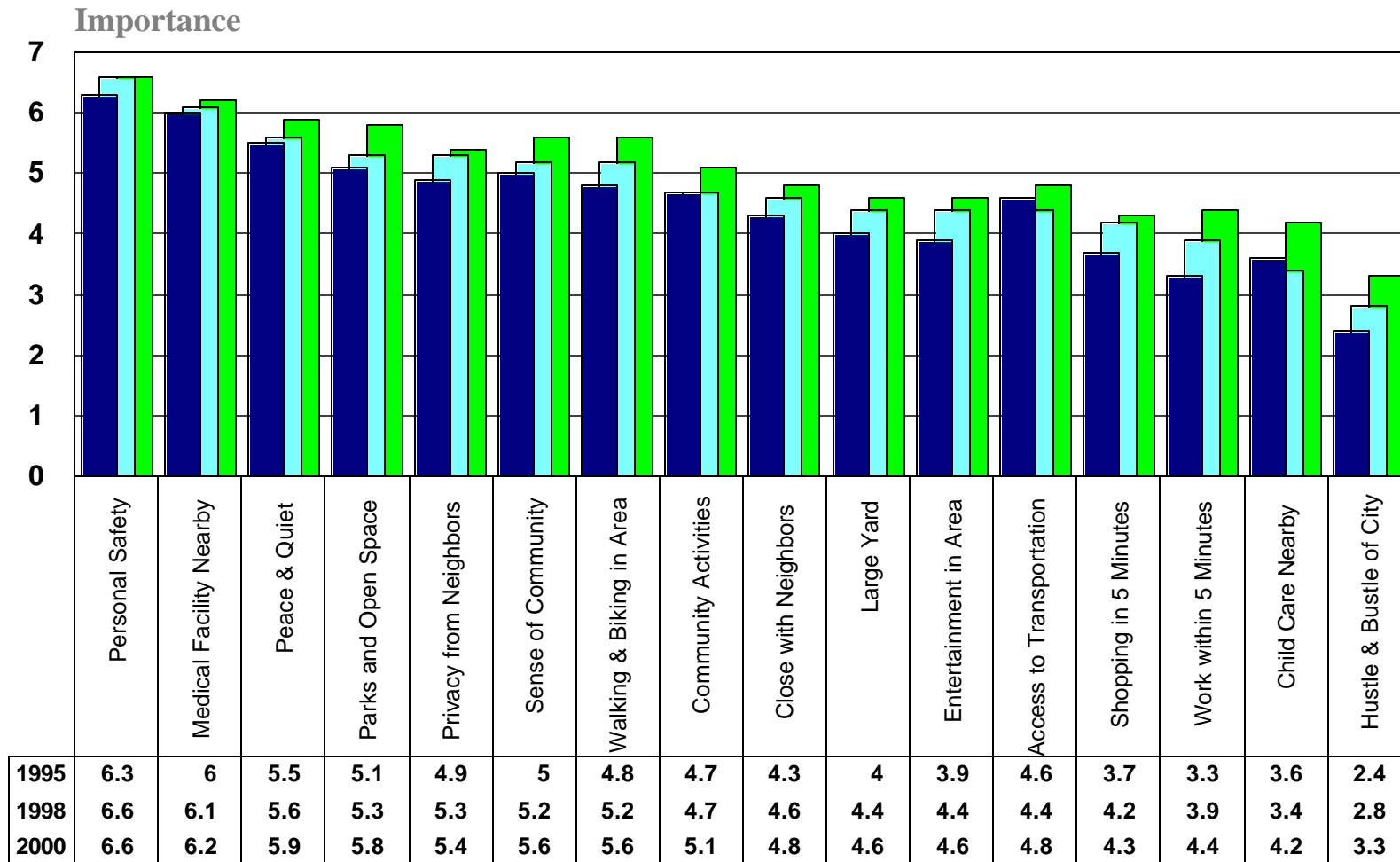


Source: Center for Applied Demography and Survey Research, University of Delaware



# Importance of Selected Quality of Life Factors

## 1995-2000



# Where would you most like to live?

## 1995-2000

