

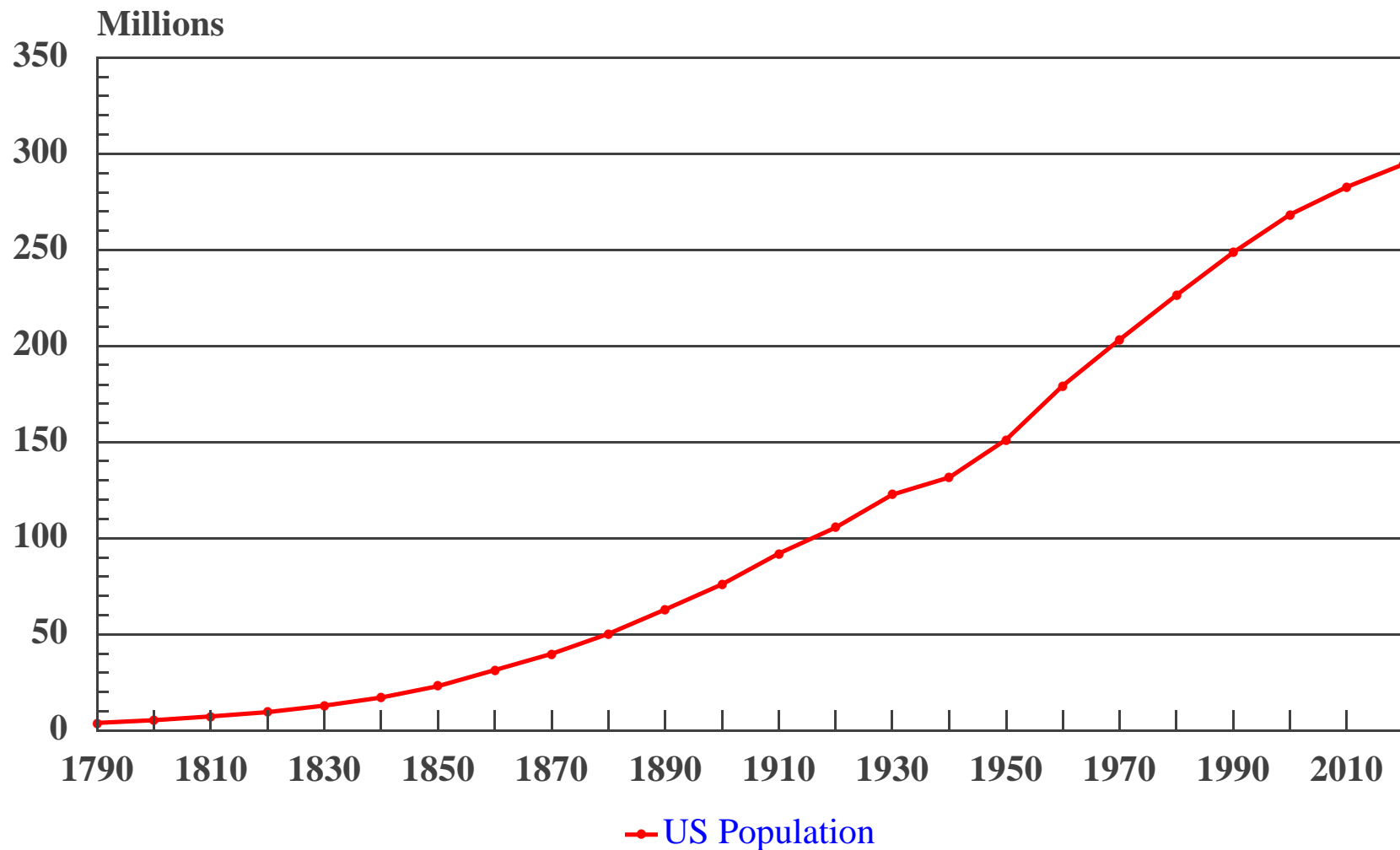
# **Delaware: 1945-1998**

**Choices for Delaware  
Life and the Economy in 2000 and Beyond**

**Presented by  
Edward C. Ratledge**

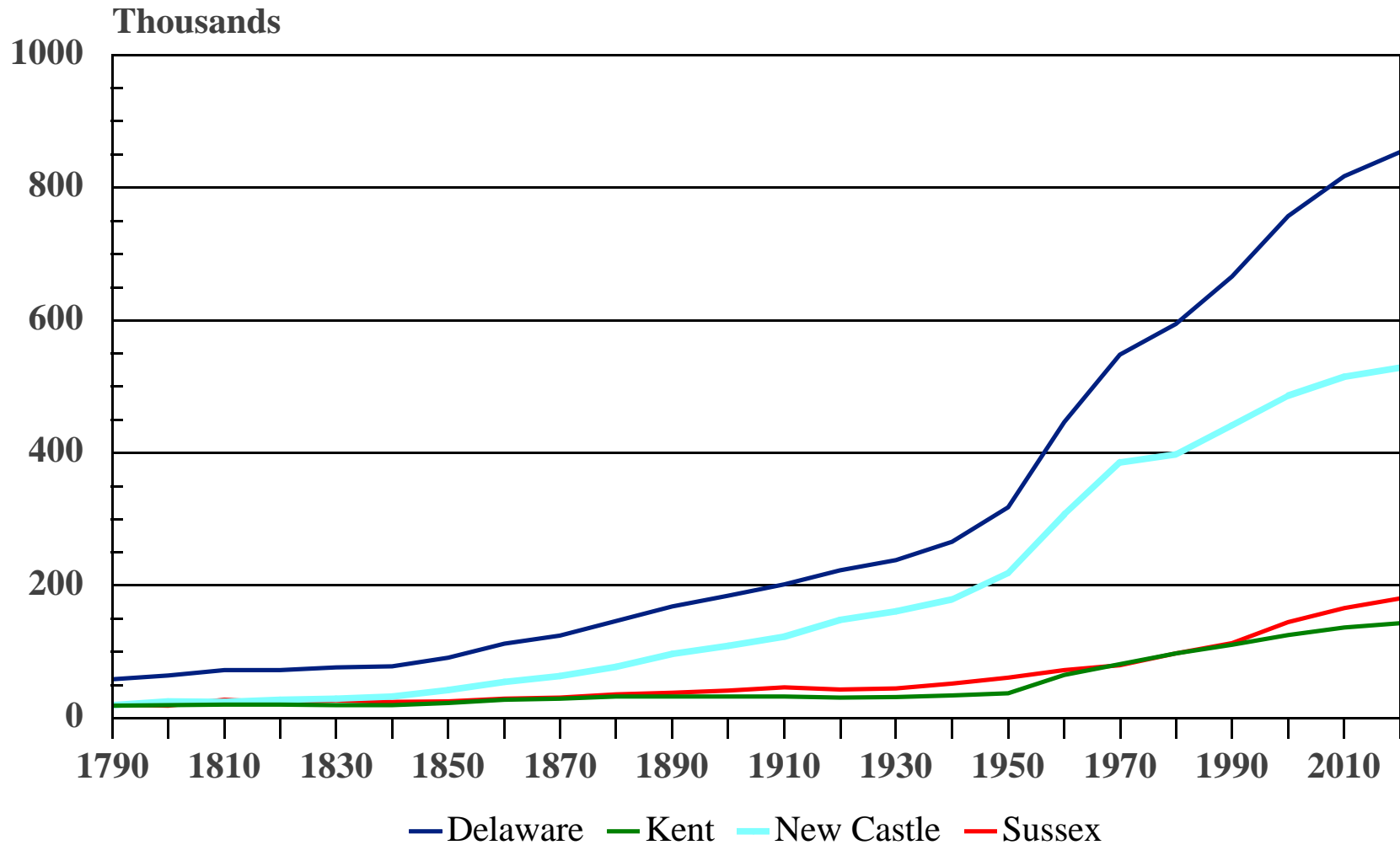
**Center for Applied Demography and Survey Research, University of Delaware**

# United States Population 1790-2020



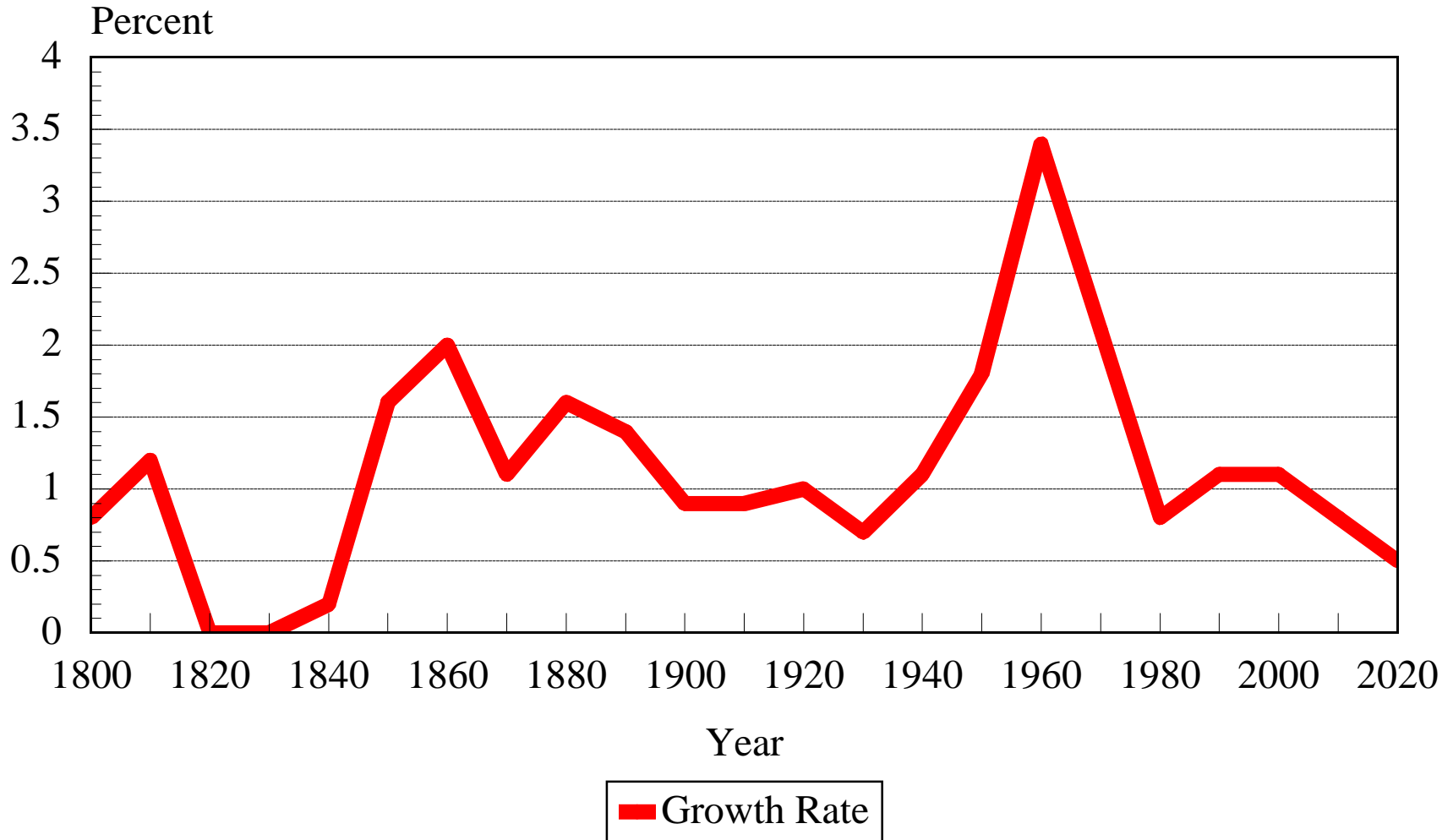
Source: Center for Applied Demography and Survey Research, University of Delaware

# Delaware and County Populations 1790-2020

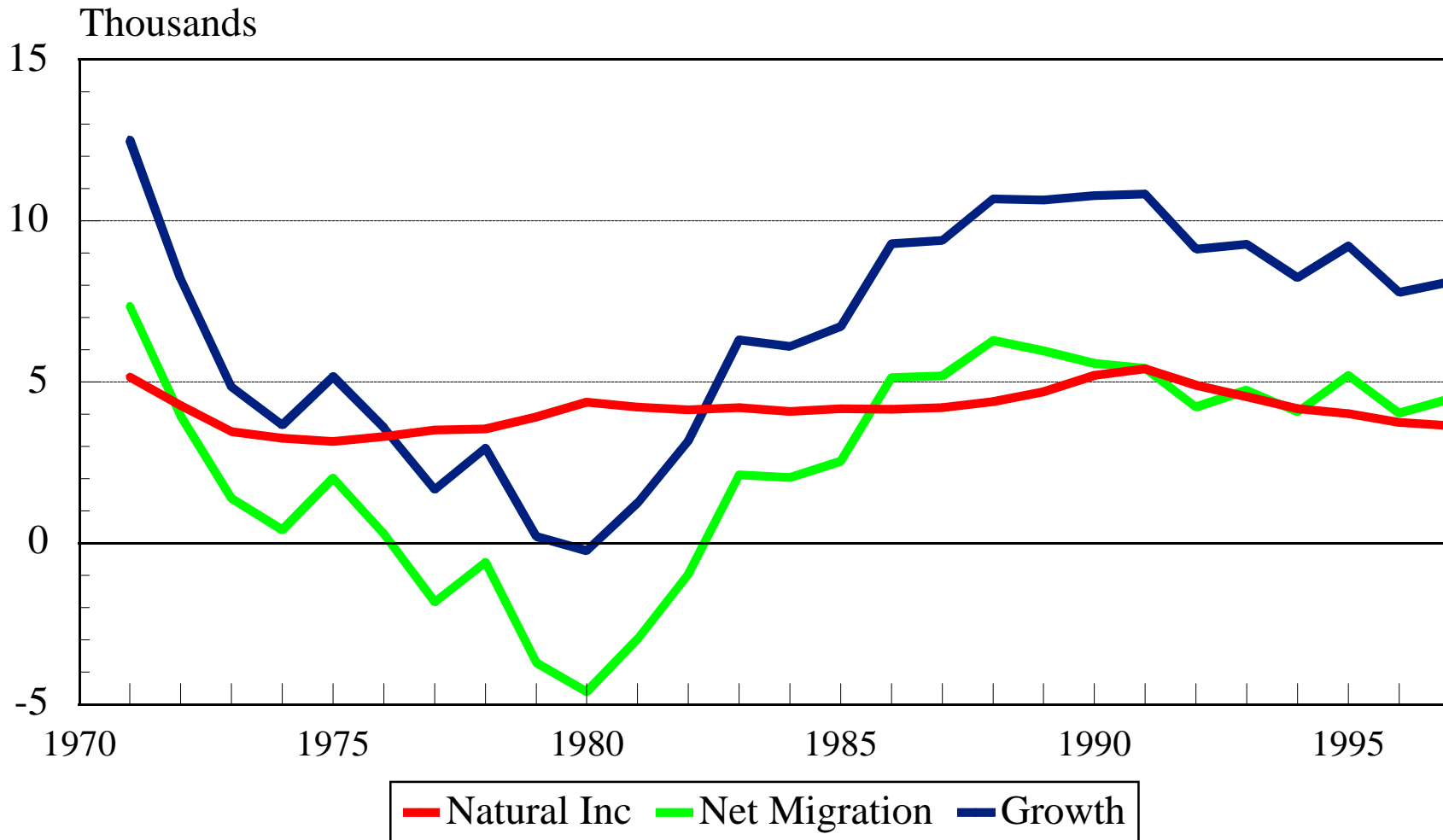


Source: Center for Applied Demography and Survey Research, University of Delaware

# Average Annual Population Growth Rates State of Delaware 1800-2020

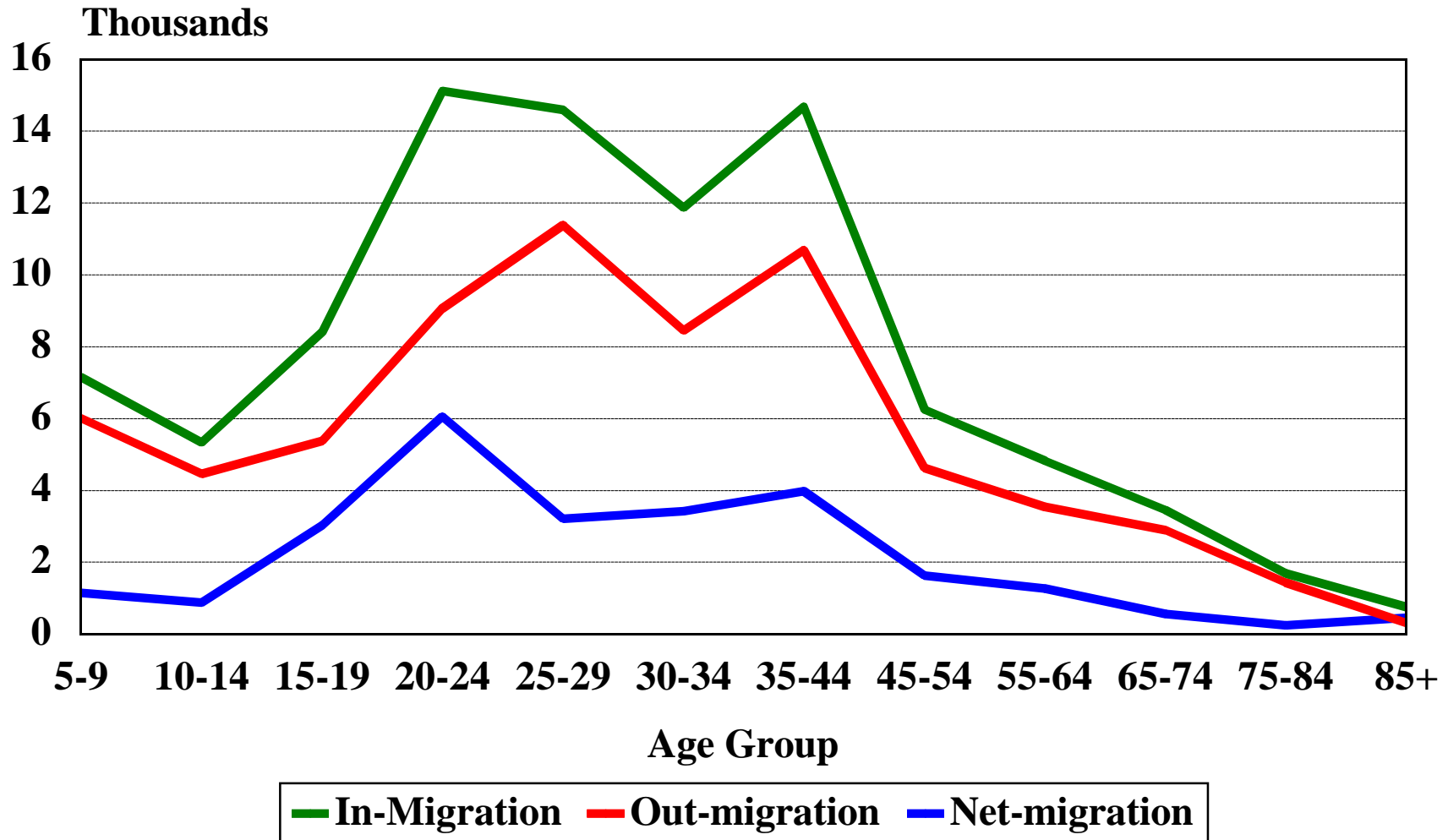


# State of Delaware Sources of Population Growth 1970-1997



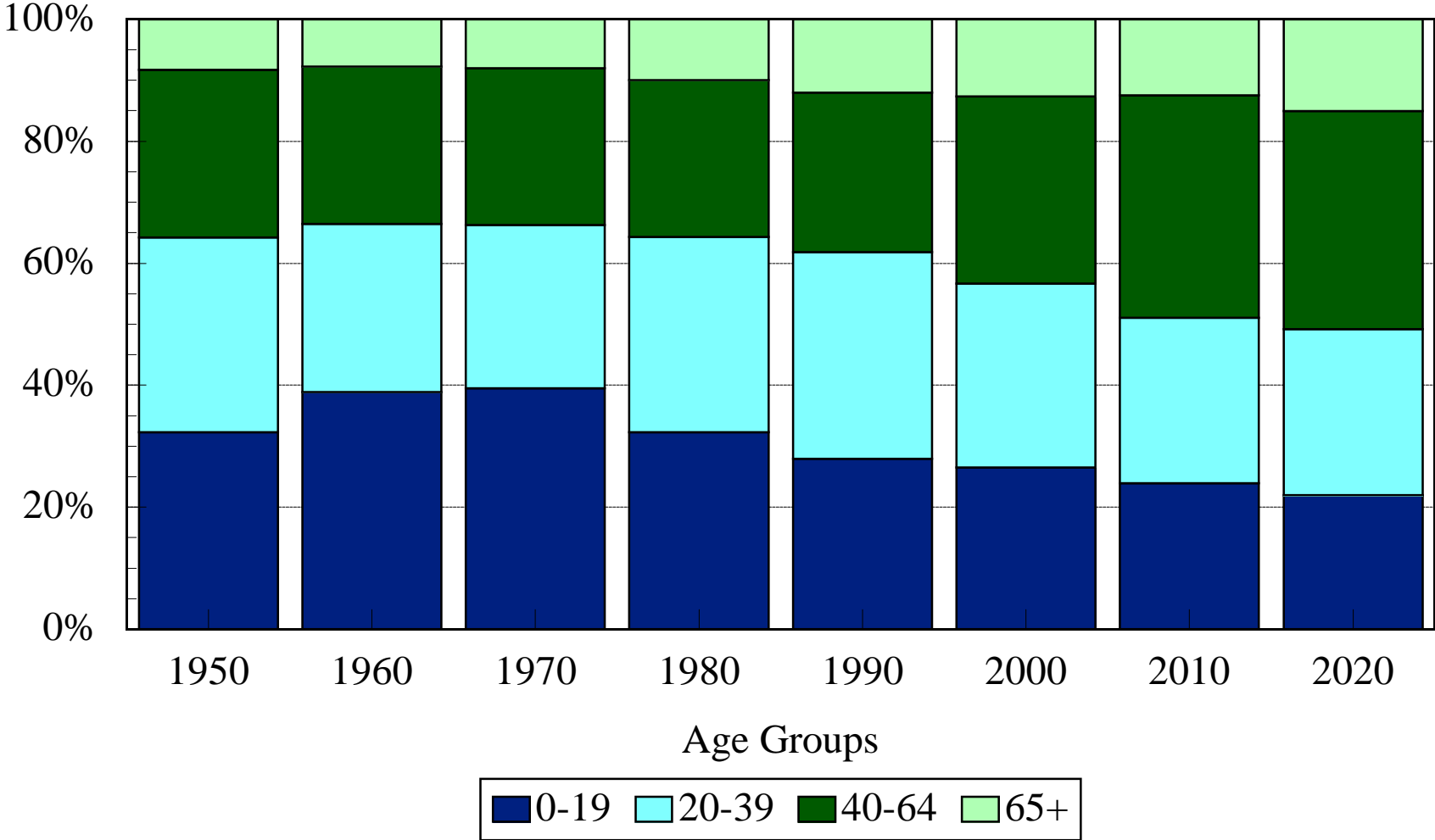
Source: Center for Applied Demography and Survey Research, University of Delaware

# Migration to and from Delaware by Age Group 1985-1990



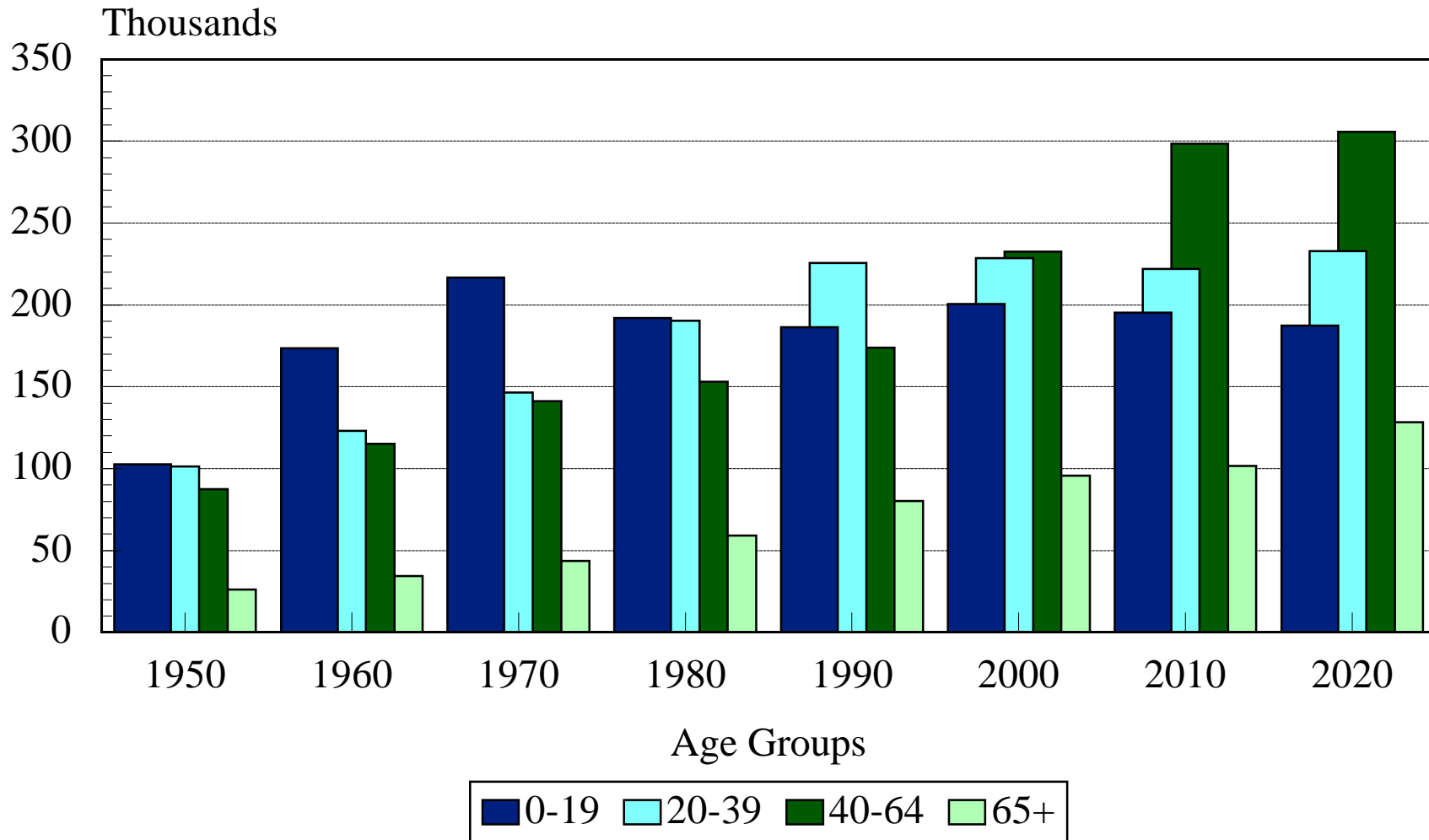
Source: Center for Applied Demography and Survey Research, University of Delaware

# Delaware Age Distribution 1950-2020



Source: Center for Applied Demography and Survey Research, University of Delaware

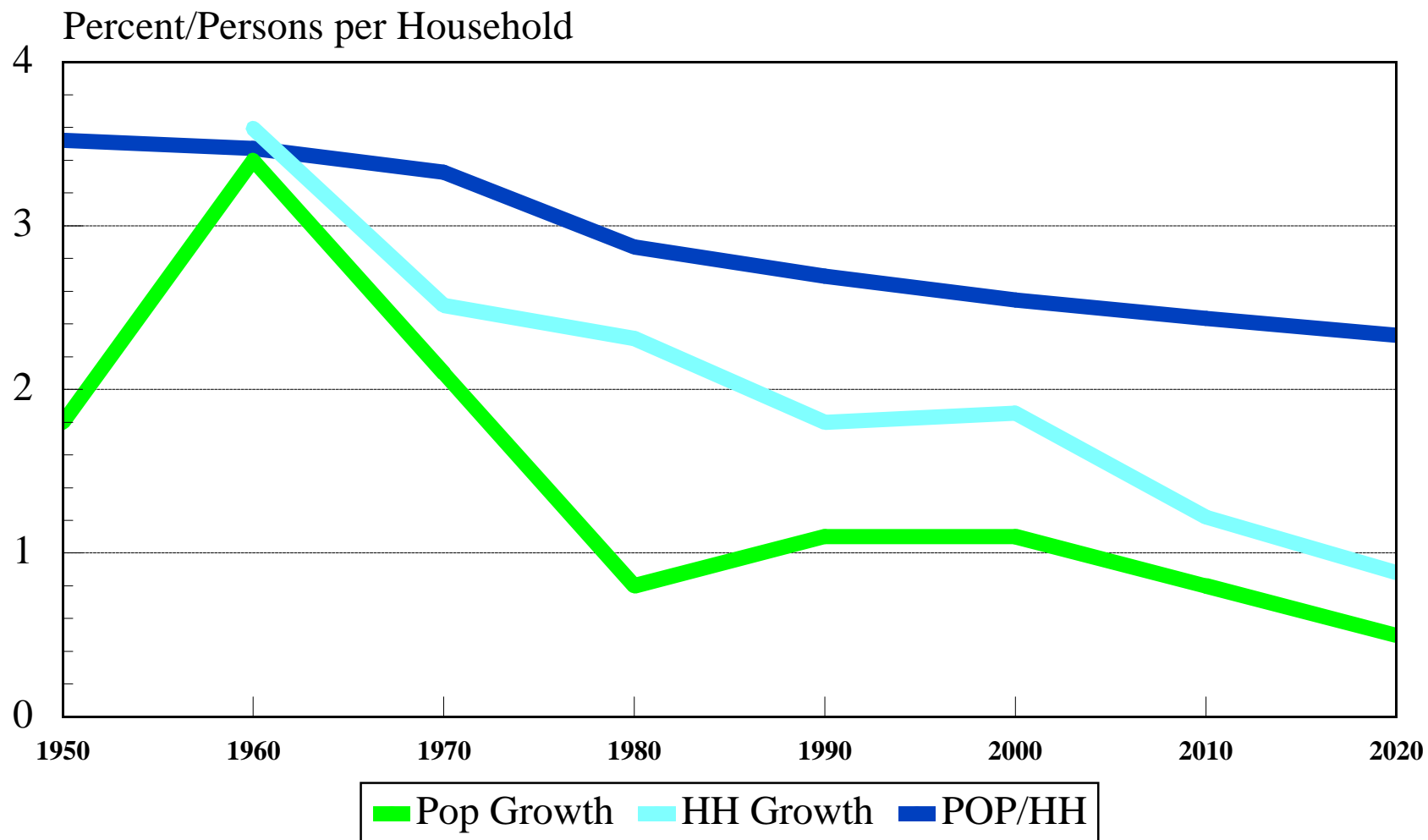
# Delaware Age Distribution 1950-2020



Source: Center for Applied Demography and Survey Research, University of Delaware

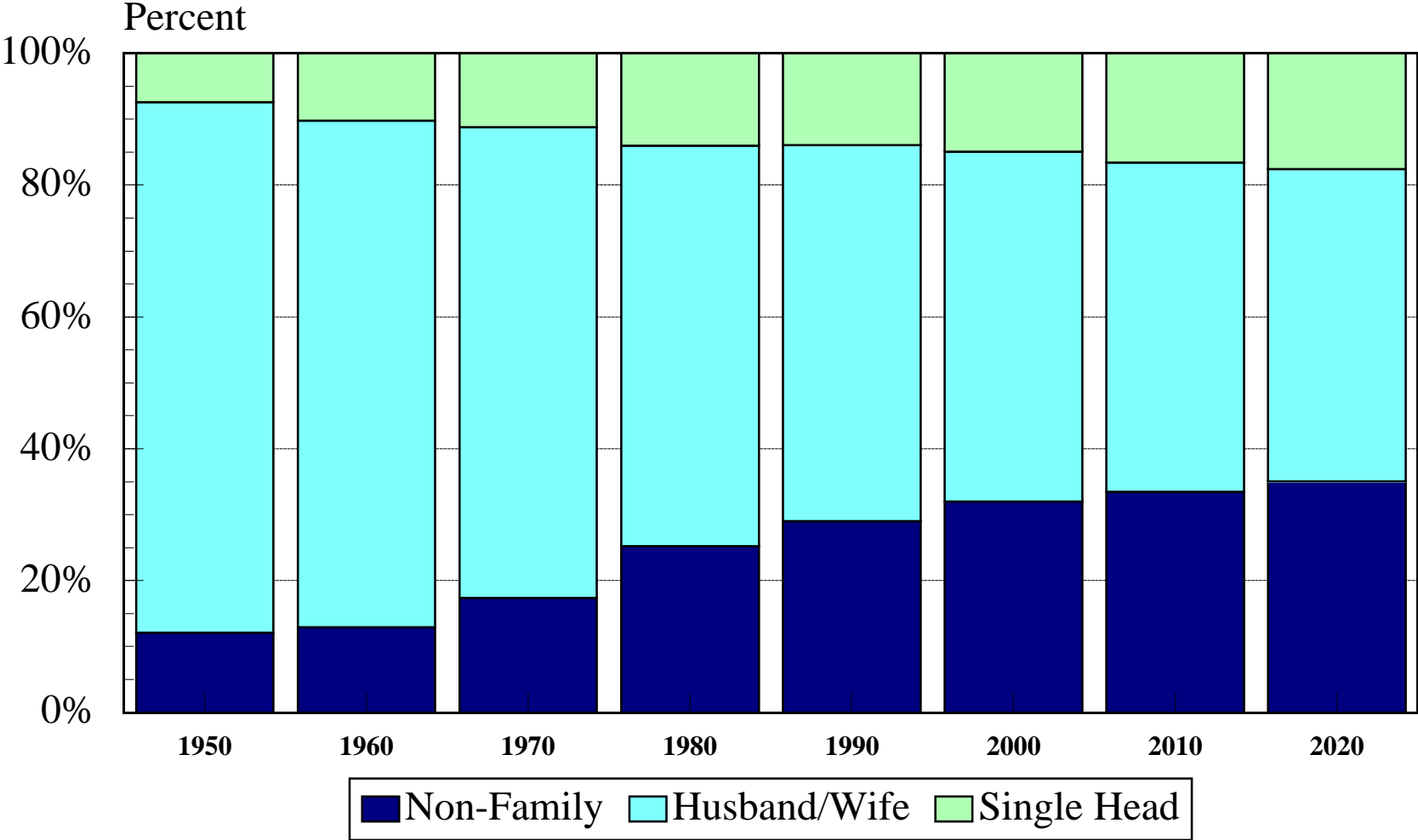


# Growth Rates of Population and Households Delaware 1950-2020



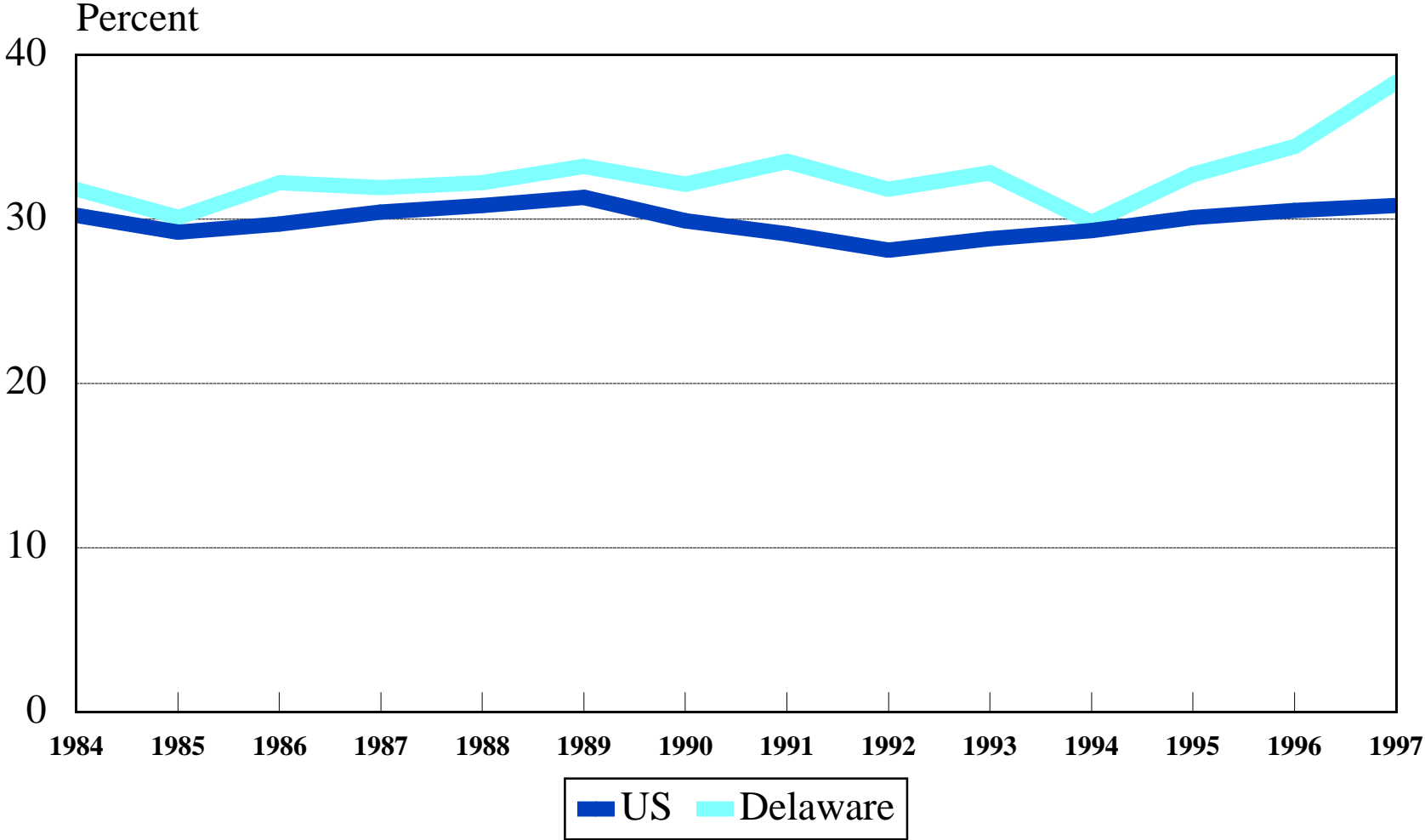
Source: Center for Applied Demography and Survey Research, University of Delaware

# Distribution of Households Types Delaware 1950-2020



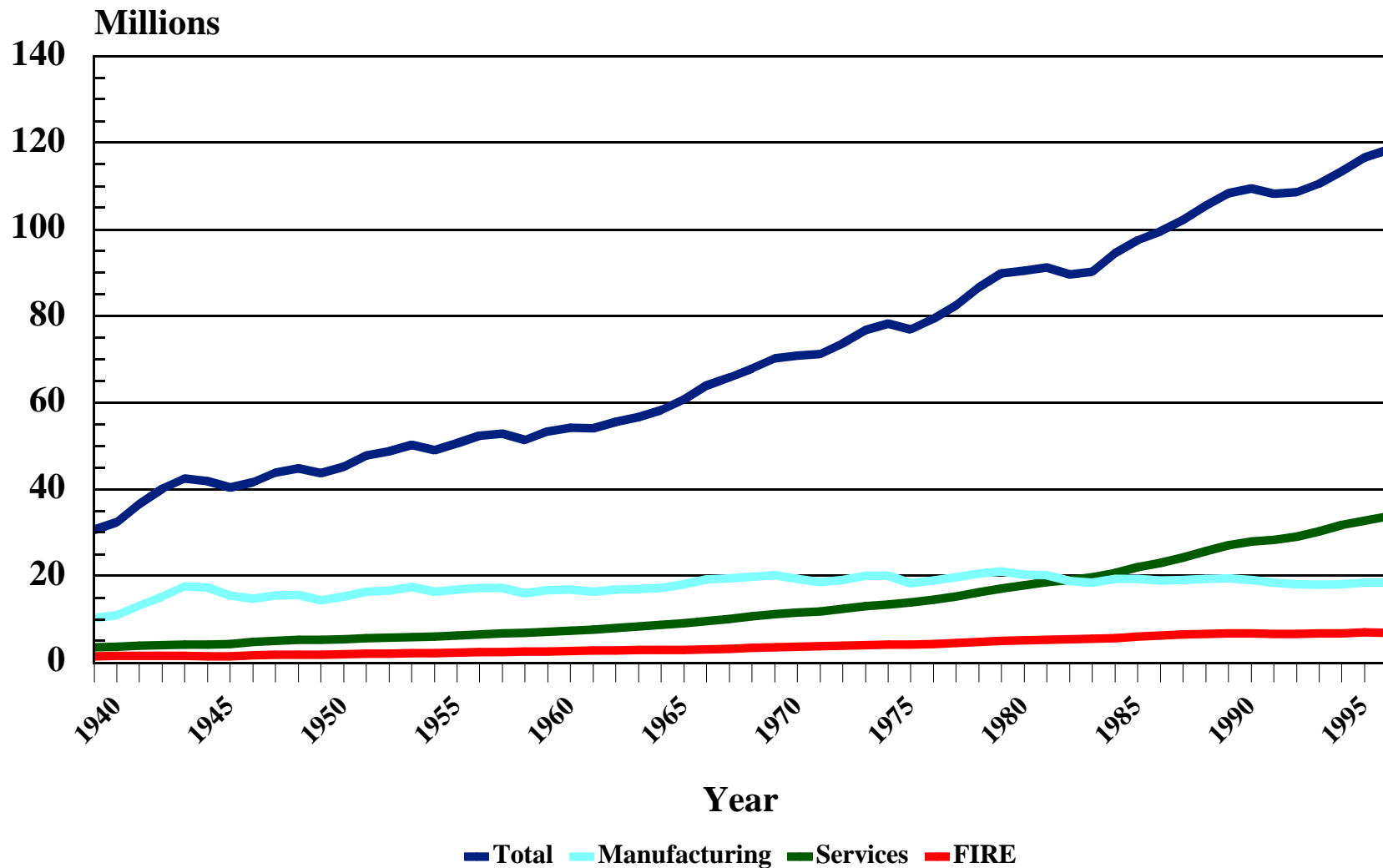
Source: Center for Applied Demography and Survey Research, University of Delaware

# Percent of Children (0-17) in One Parent Households for Delaware and the United States



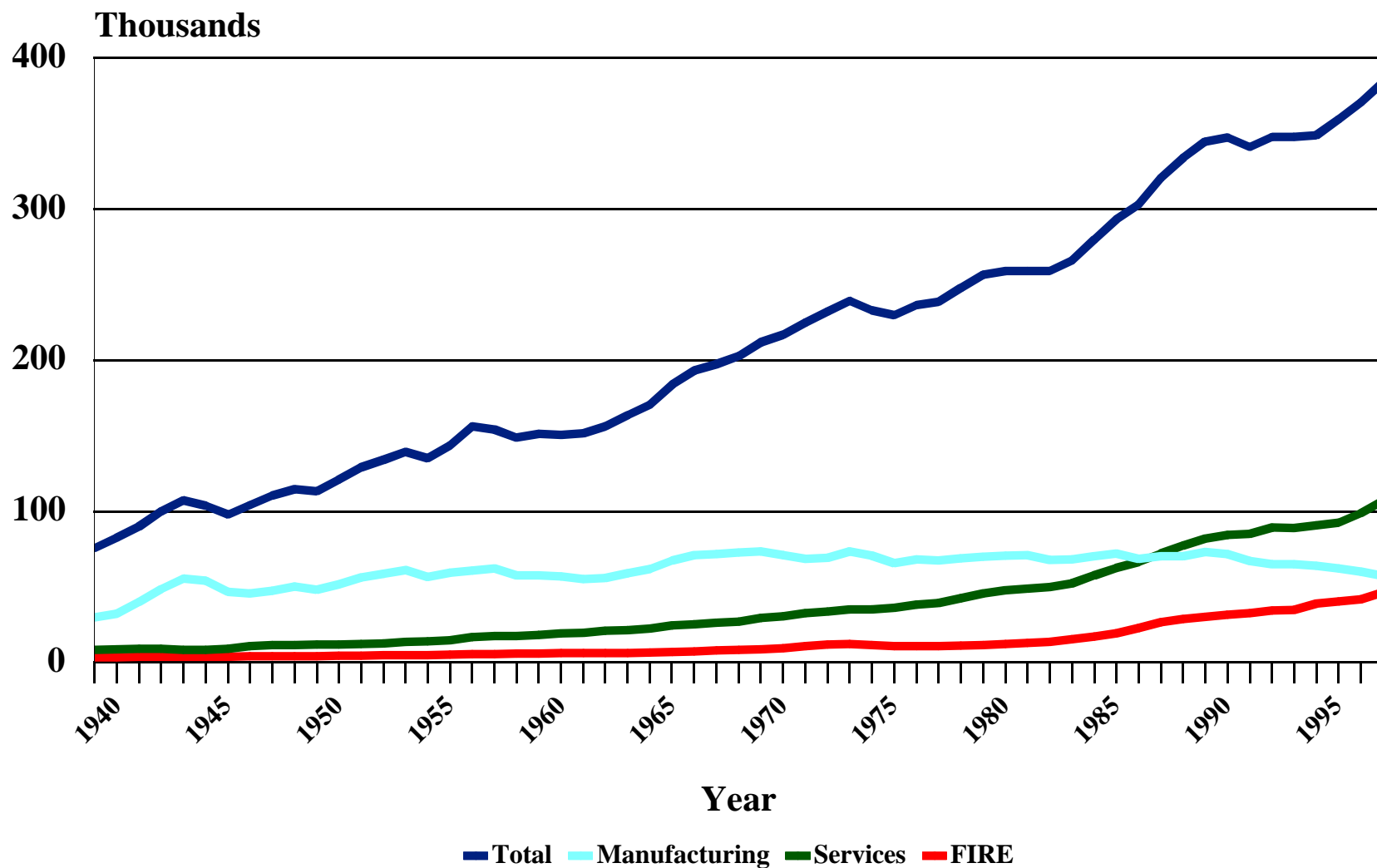
Source: Center for Applied Demography and Survey Research, University of Delaware

# US Non-Ag Employment for Selected Sectors 1939-1996



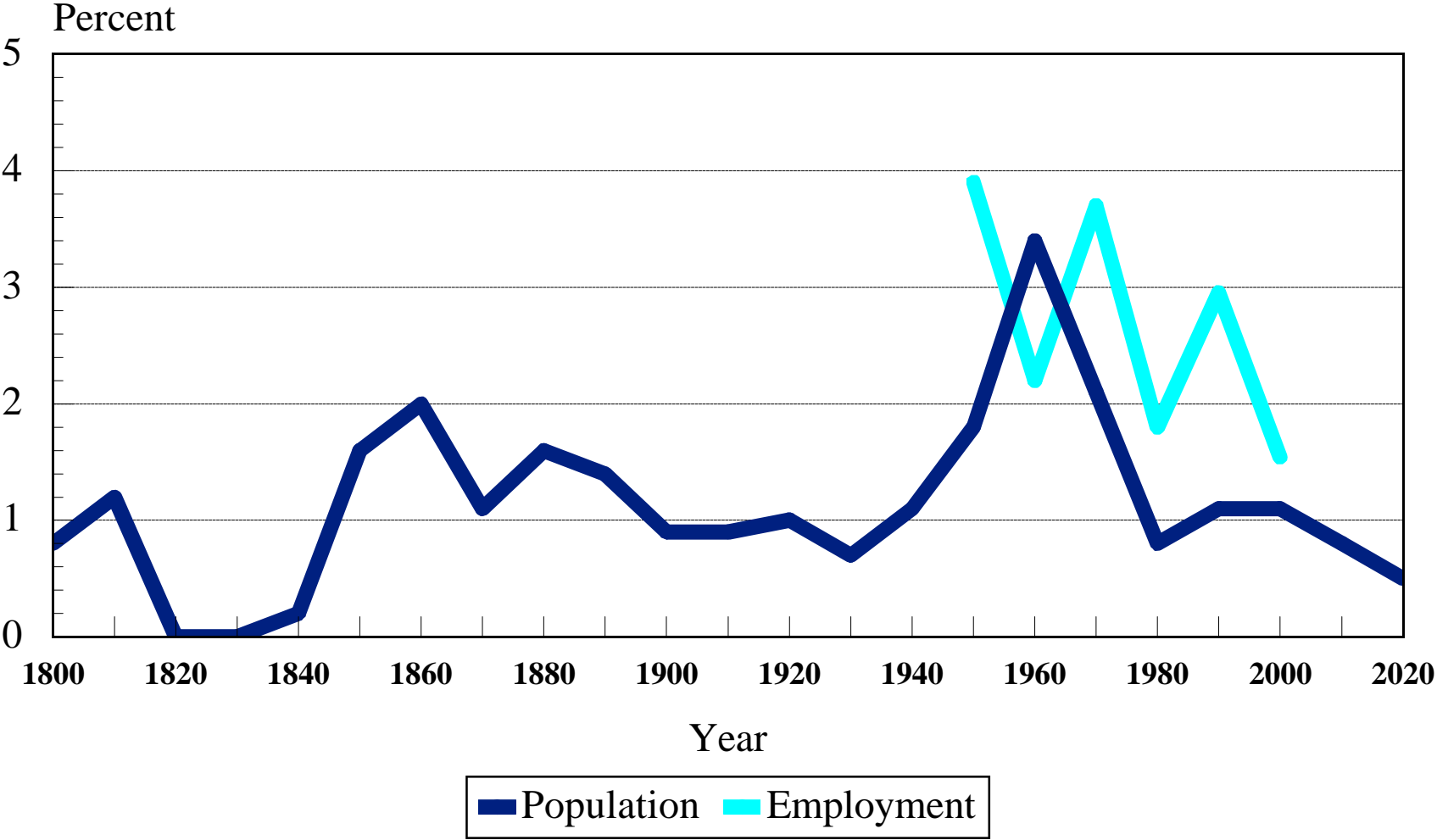
Source: Center for Applied Demography and Survey Research, University of Delaware

# Delaware Non-Agricultural Employment 1939-1997



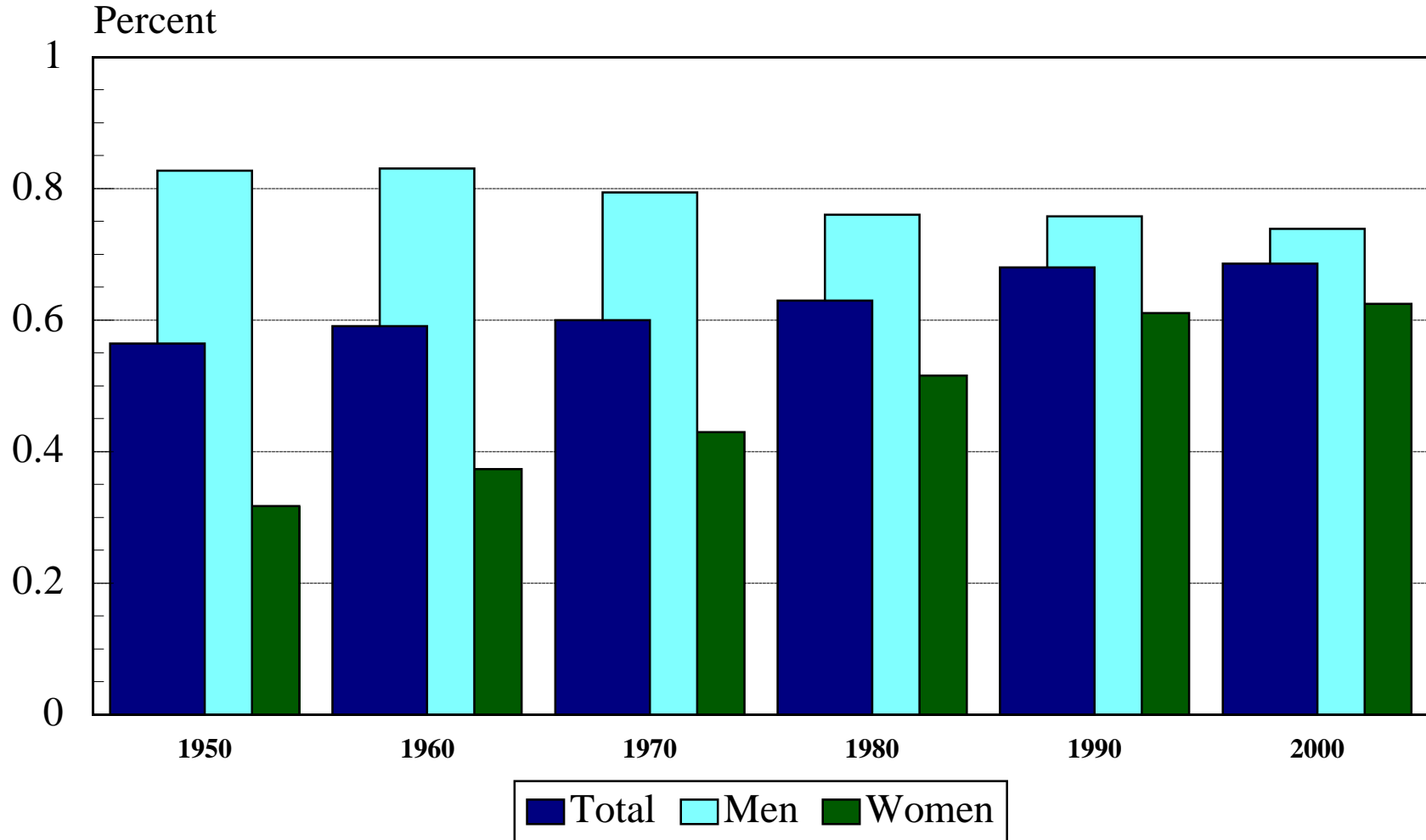
Source: Center for Applied Demography and Survey Research, University of Delaware

# Average Annual Population and Employment Growth Rates State of Delaware 1800-2020



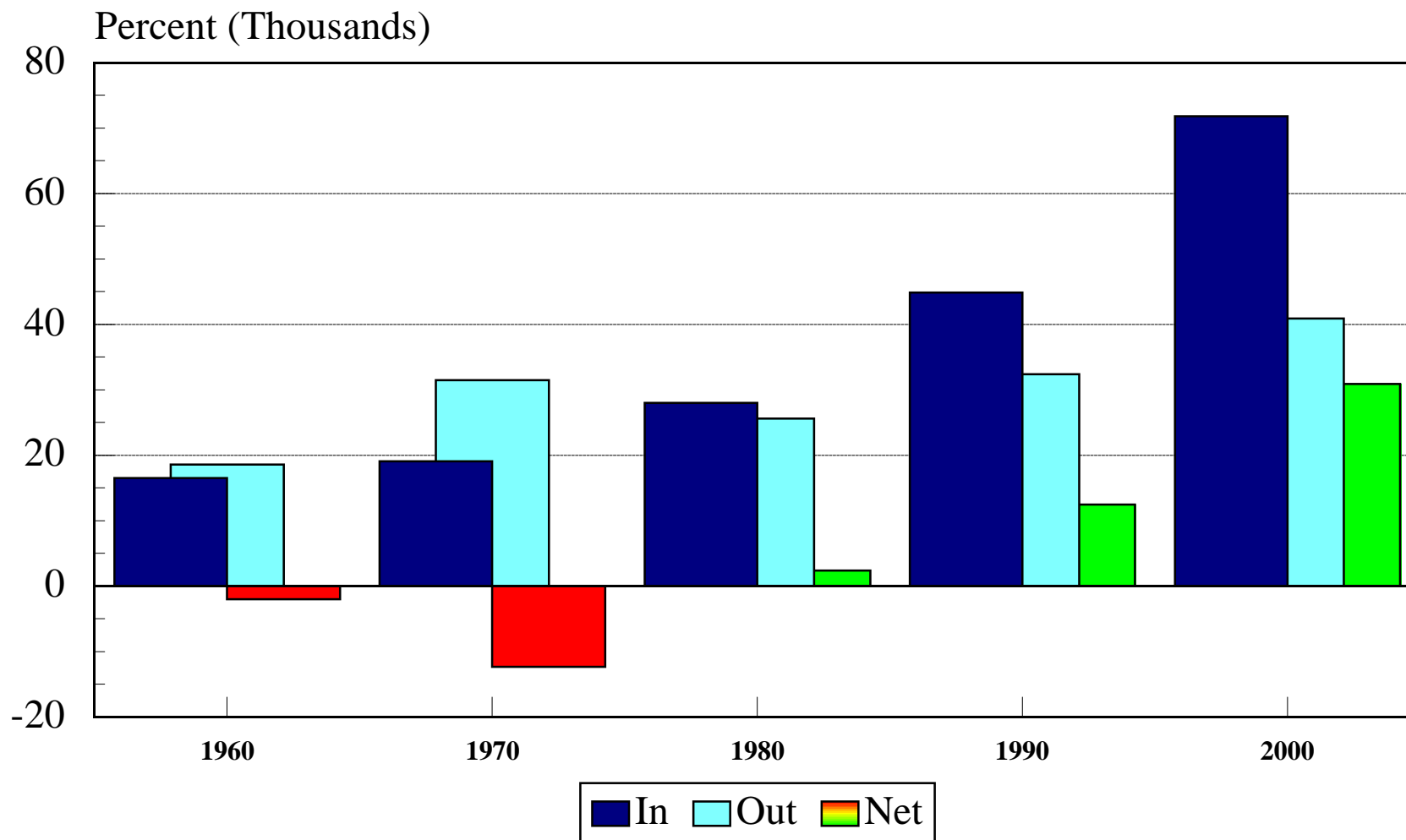
Source: Center for Applied Demography and Survey Research, University of Delaware

# Laborforce Participation Rates by Gender for Delaware 1950-2000



Source: Center for Applied Demography and Survey Research, University of Delaware

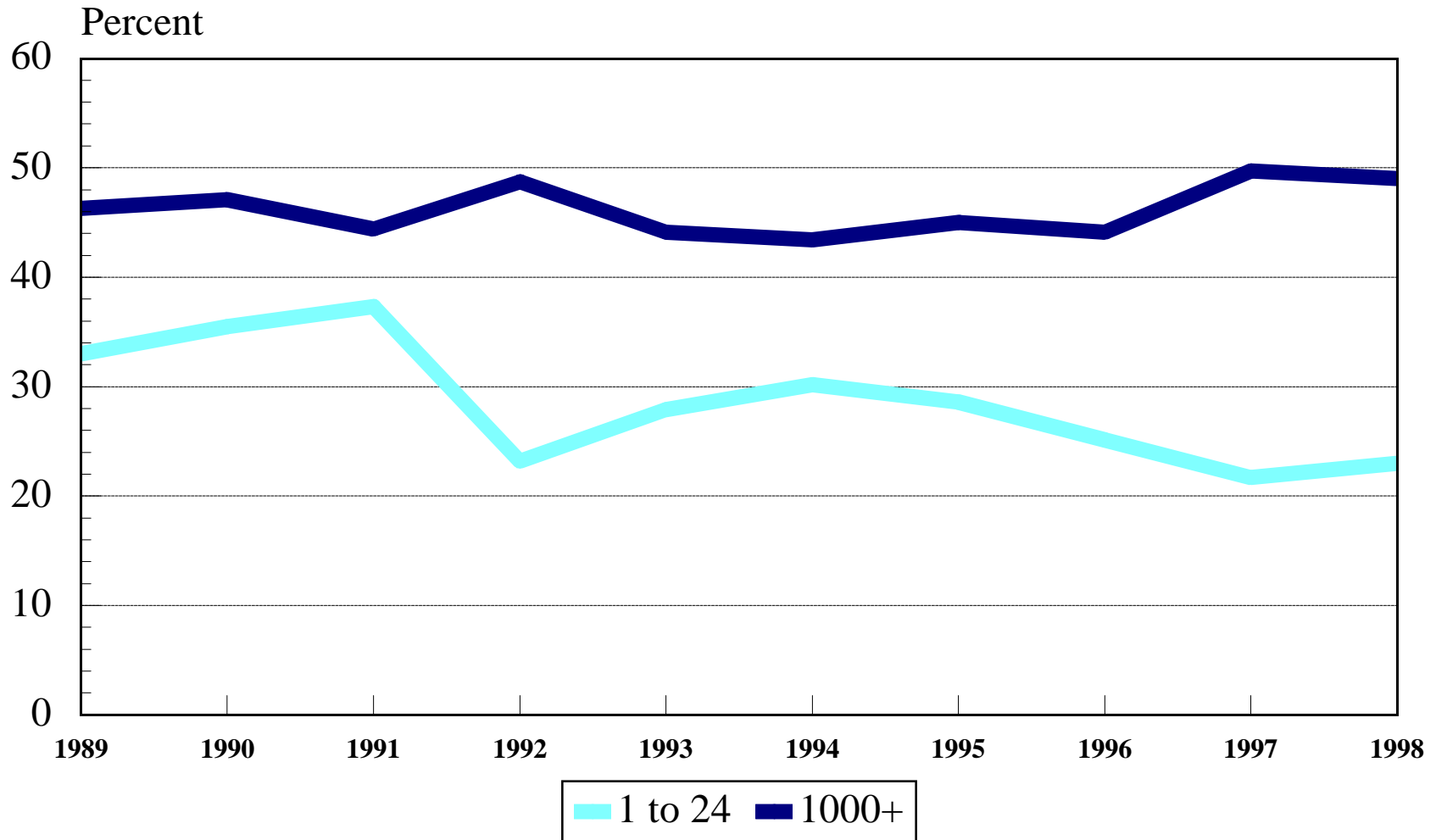
# Commuting to Work - Into and Out of the State for Delaware 1960-2000



Source: Center for Applied Demography and Survey Research, University of Delaware

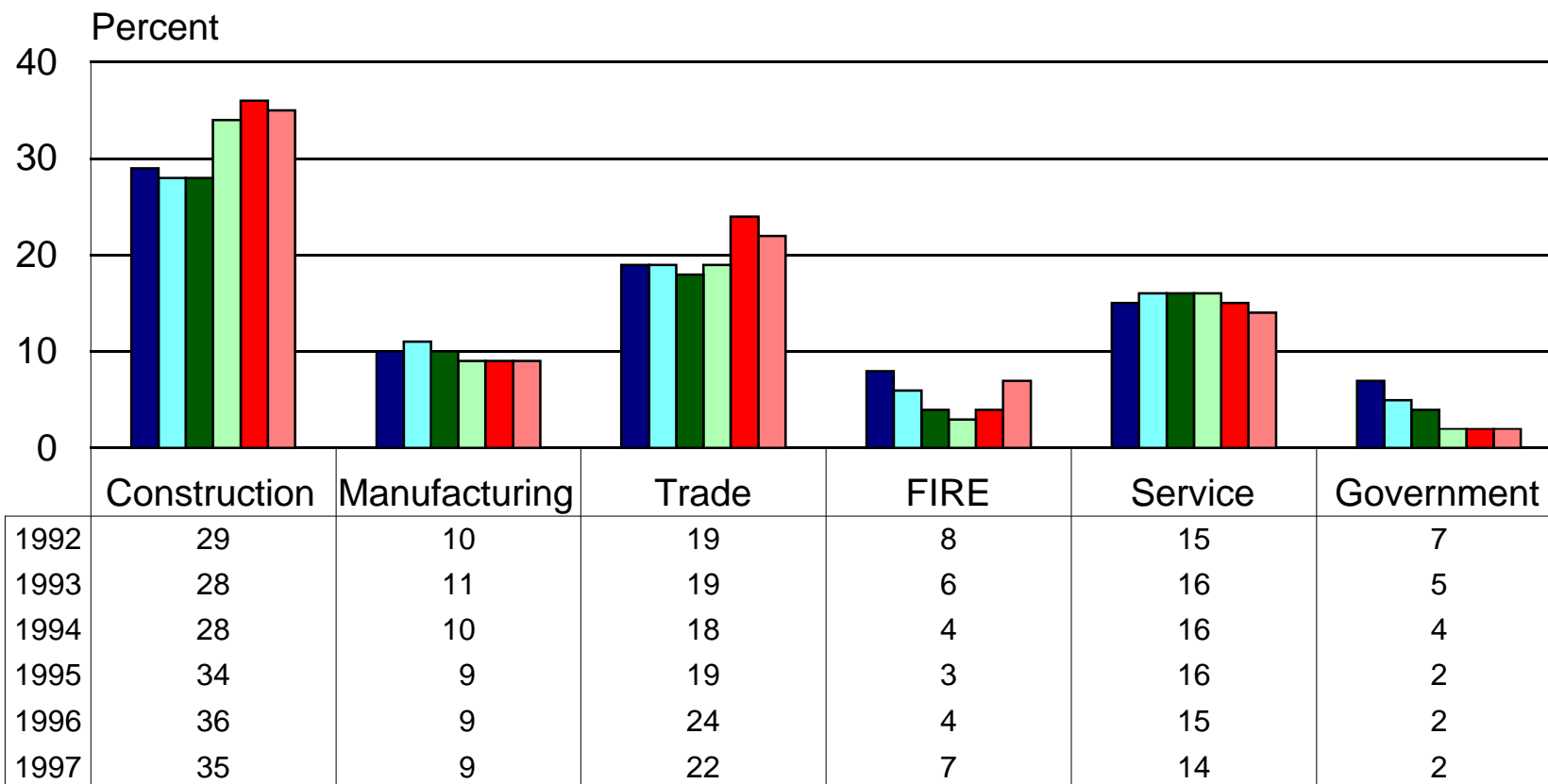


# Size of Employer for Delaware 1989-1998



Source: Center for Applied Demography and Survey Research, University of Delaware

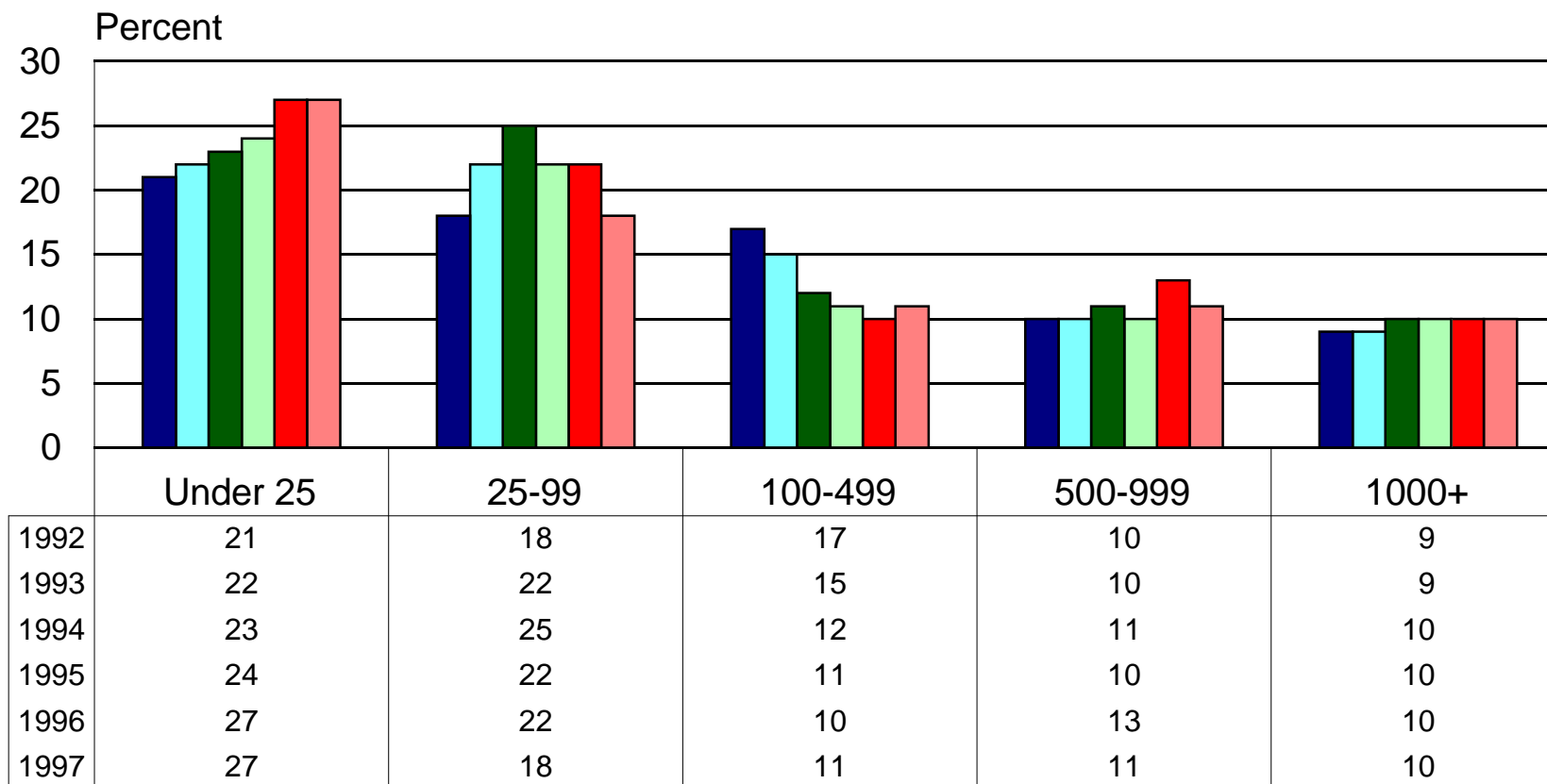
# Percent without Health Insurance by Industry in Delaware



Year

■ 1992  
 ■ 1993  
 ■ 1994  
 ■ 1995  
 ■ 1996  
 ■ 1997

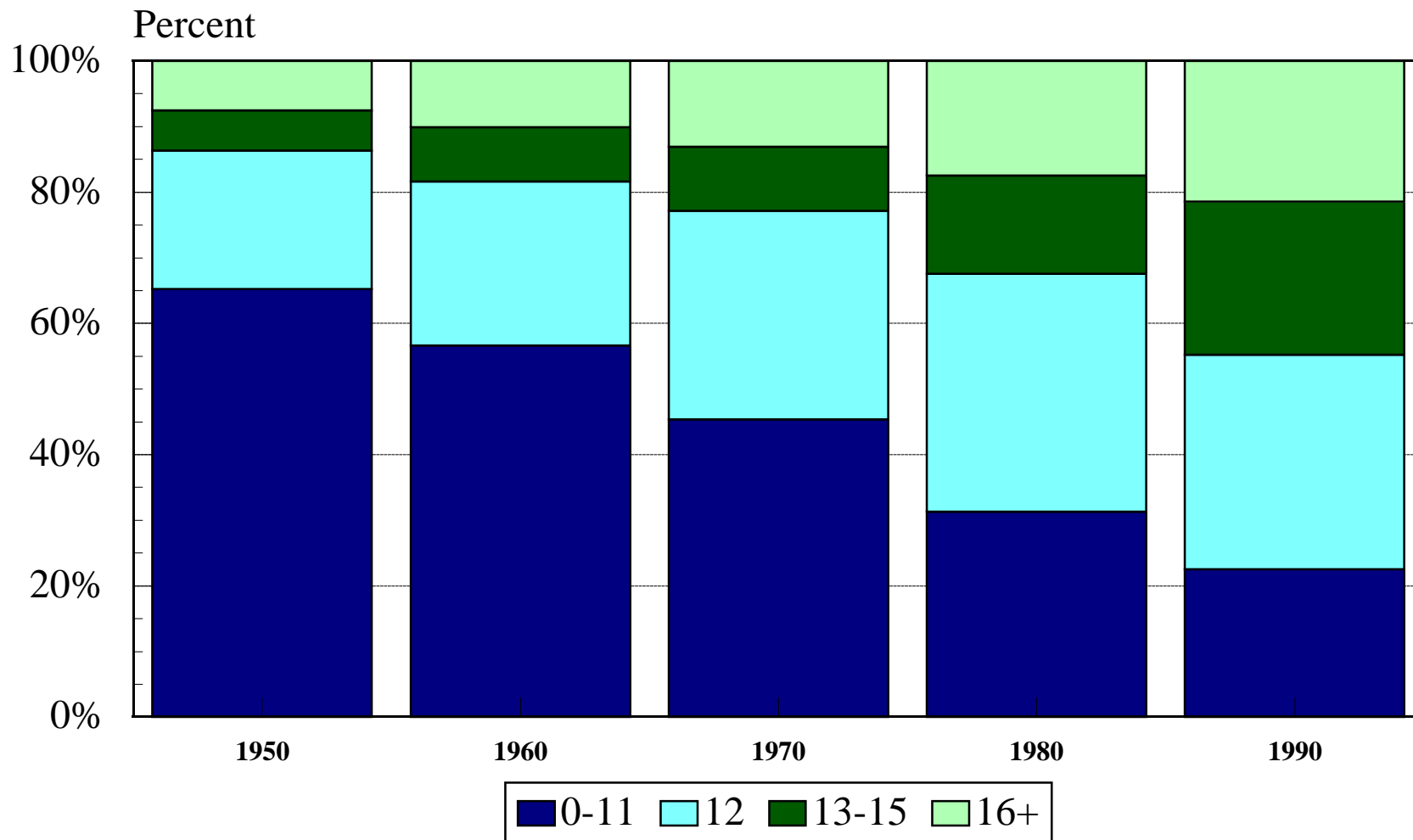
# Percent without Health Insurance by Size of Firm



Size of Firm

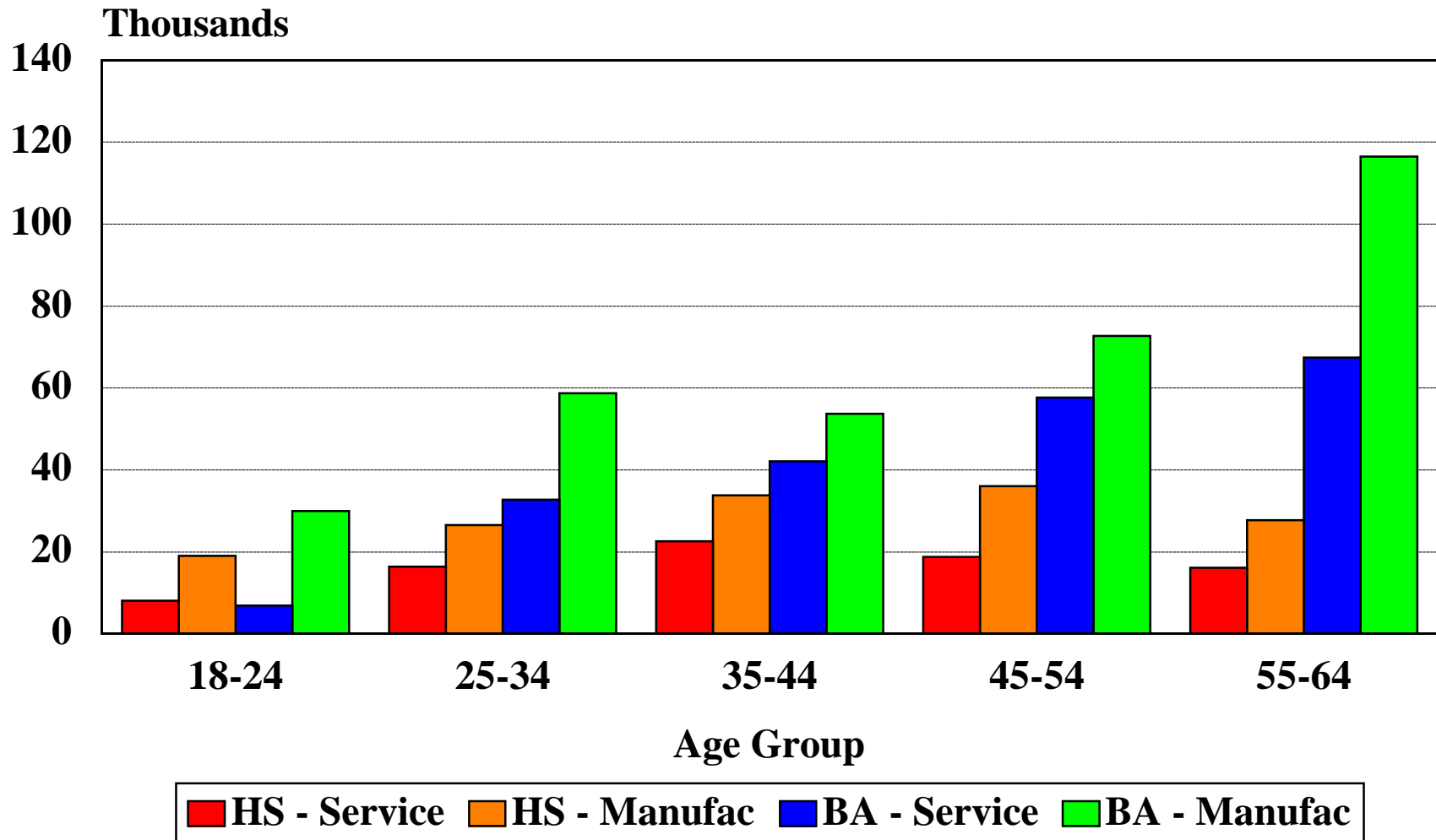
■ 1992  
 ■ 1993  
 ■ 1994  
 ■ 1995  
 ■ 1996  
 ■ 1997

# Years of Education (Age 25 years and Older) Delaware 1950-1990



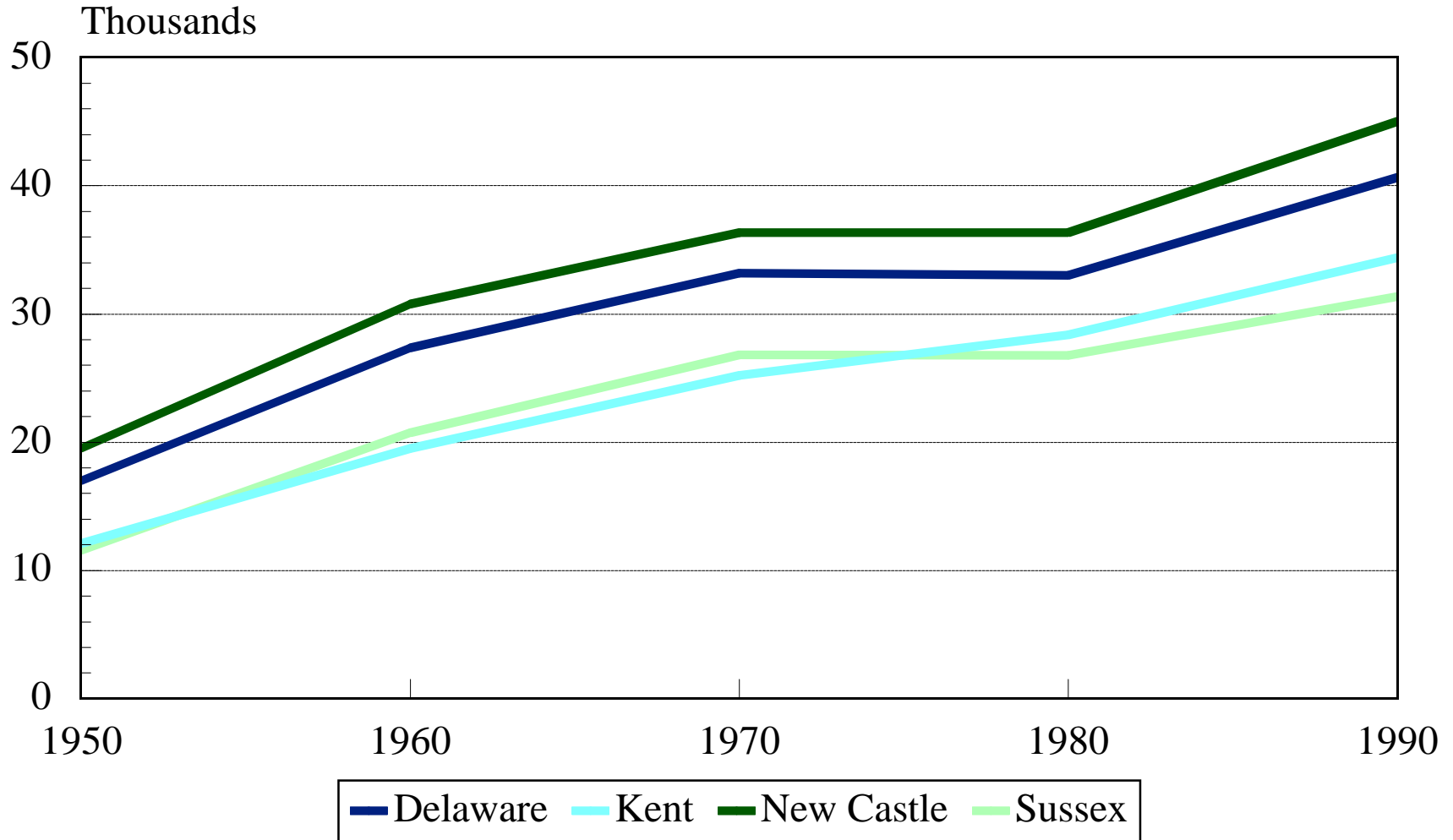
Source: Center for Applied Demography and Survey Research, University of Delaware

# Average Yearly Earnings (1995-1997) by Sector , Age, and Education



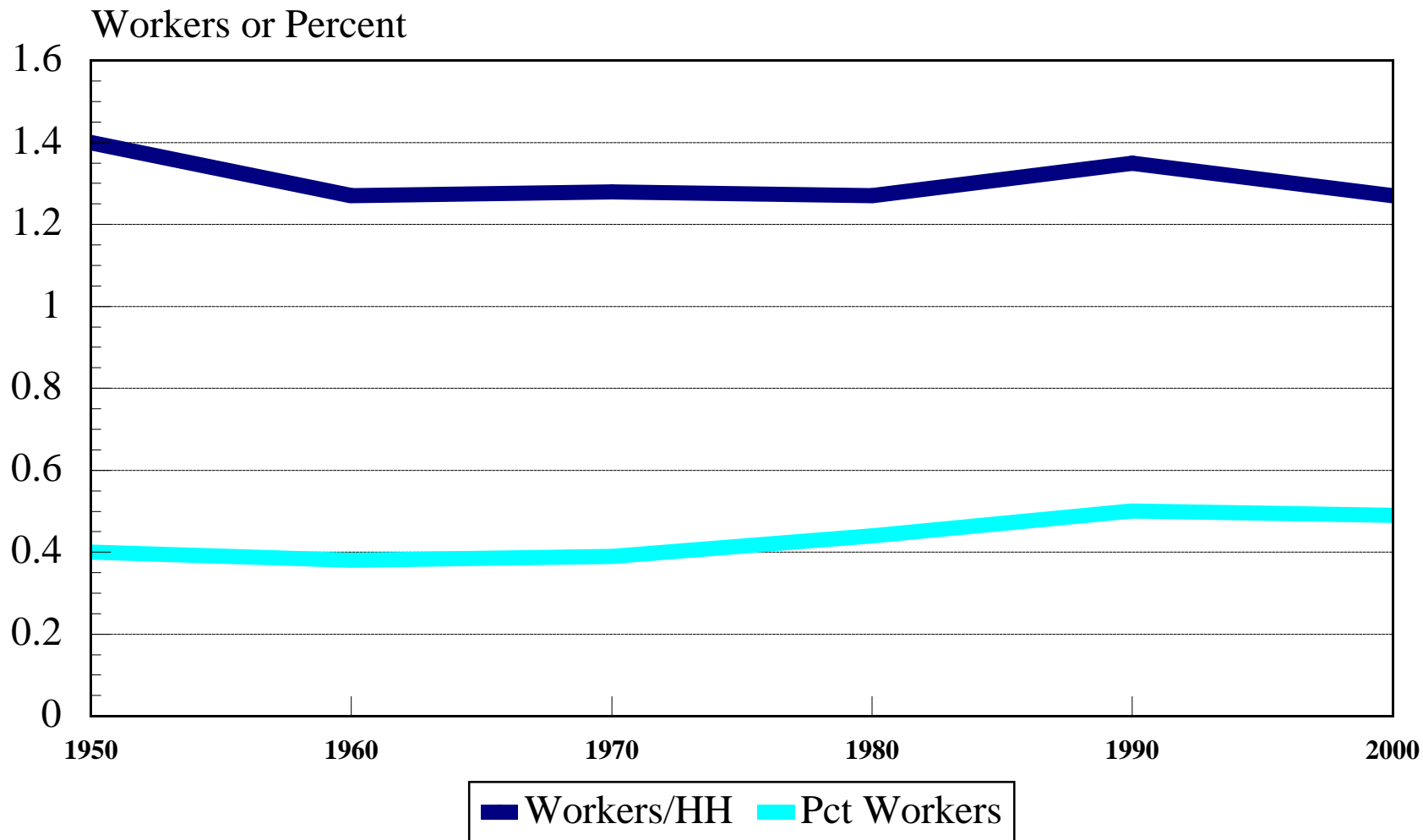
Source: Center for Applied Demography and Survey Research, University of Delaware

# Median Household Income (Constant Dollars) Delaware 1950-1990



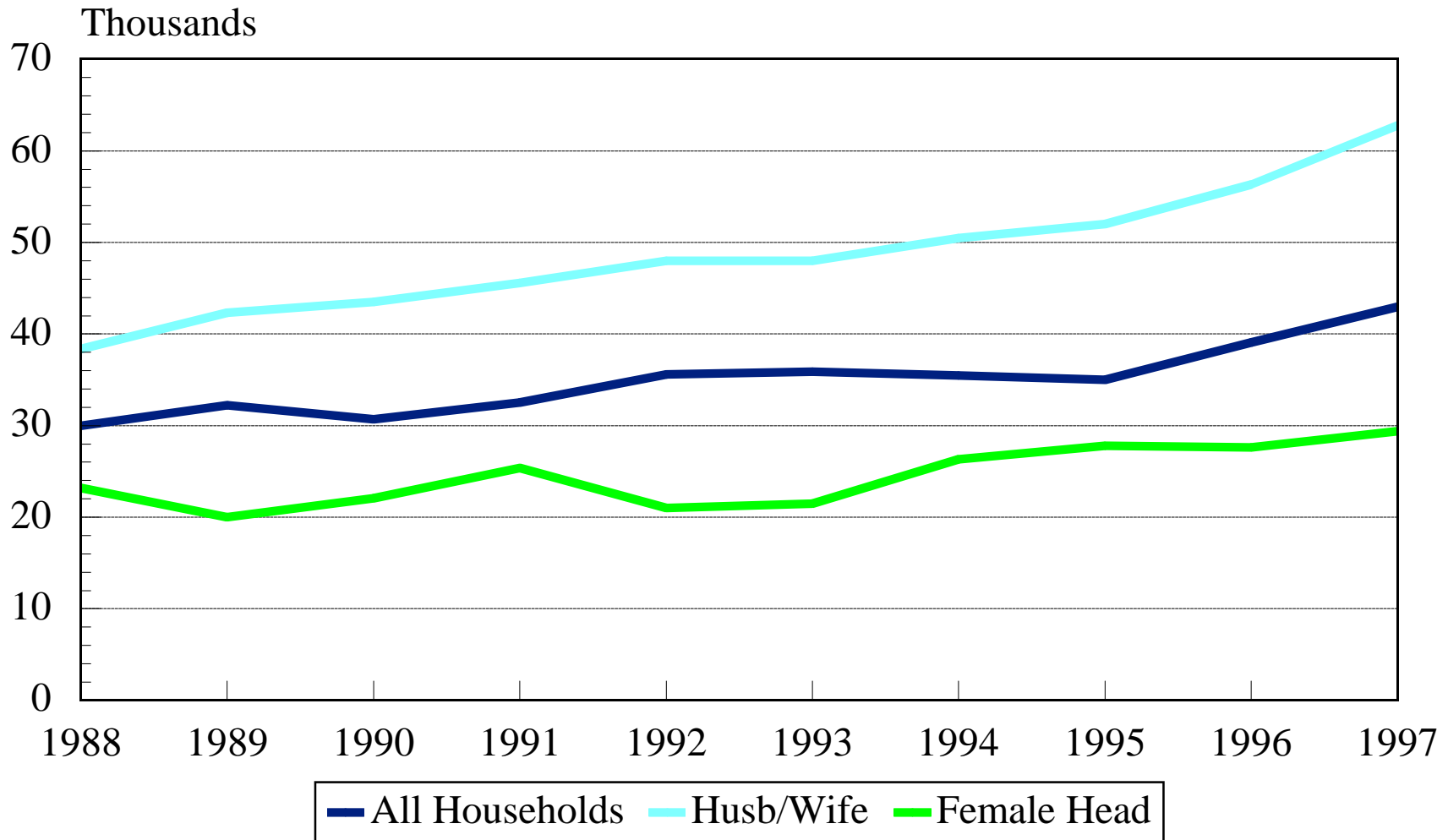
Source: Center for Applied Demography and Survey Research, University of Delaware

# Workers per Household/Pct Workers Delaware and US 1950-2000



Source: Center for Applied Demography and Survey Research, University of Delaware

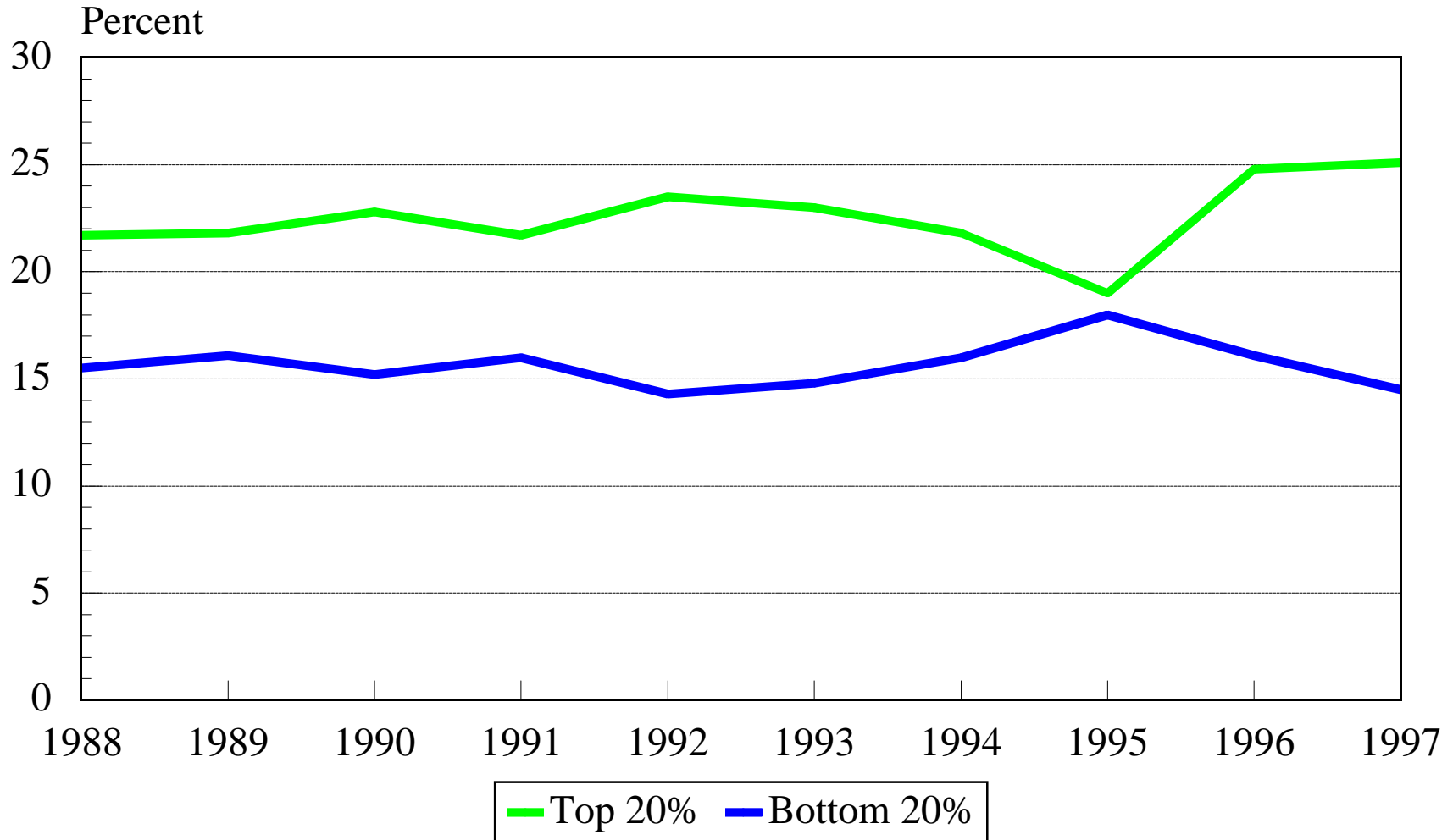
# Median Household Income (Nominal) Delaware 1988-1997



Source: Center for Applied Demography and Survey Research, University of Delaware



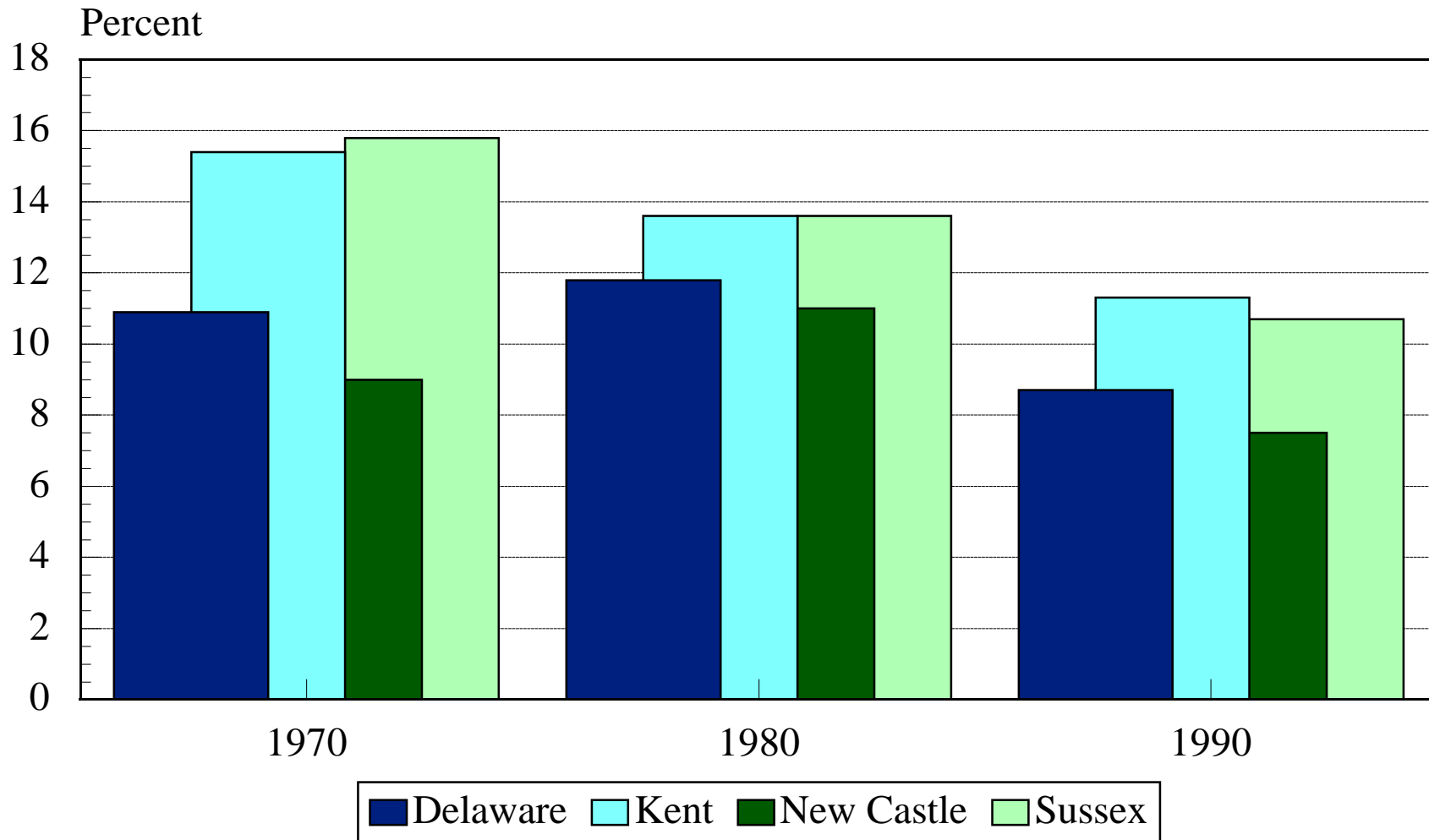
# Distribution of Household Income Delaware vs. US 1988-1997



Source: Center for Applied Demography and Survey Research, University of Delaware

# State of Delaware

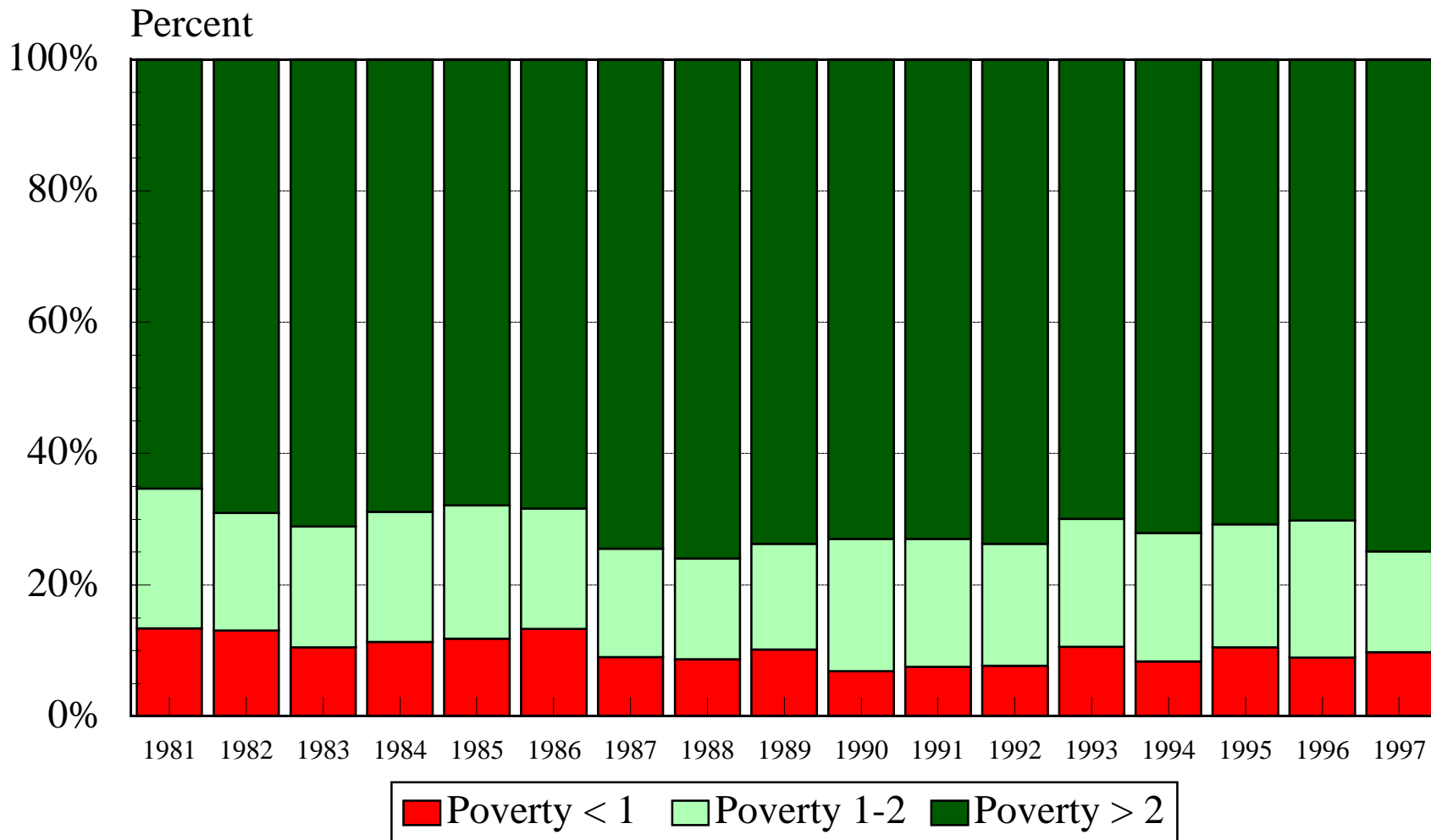
## Percent of Persons in Poverty



Source: Center for Applied Demography and Survey Research, University of Delaware

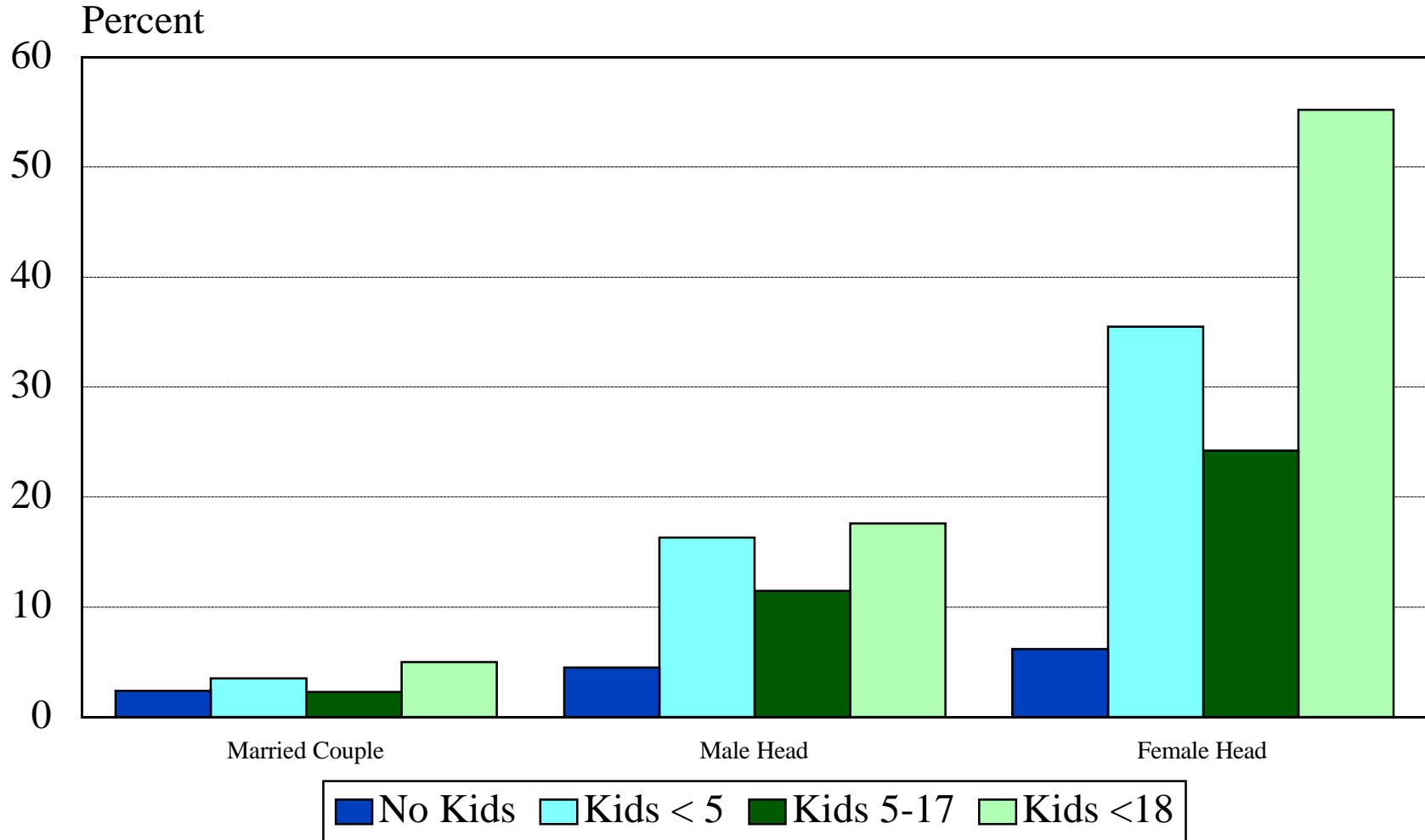
# State of Delaware

## Percent of Persons by Poverty Class



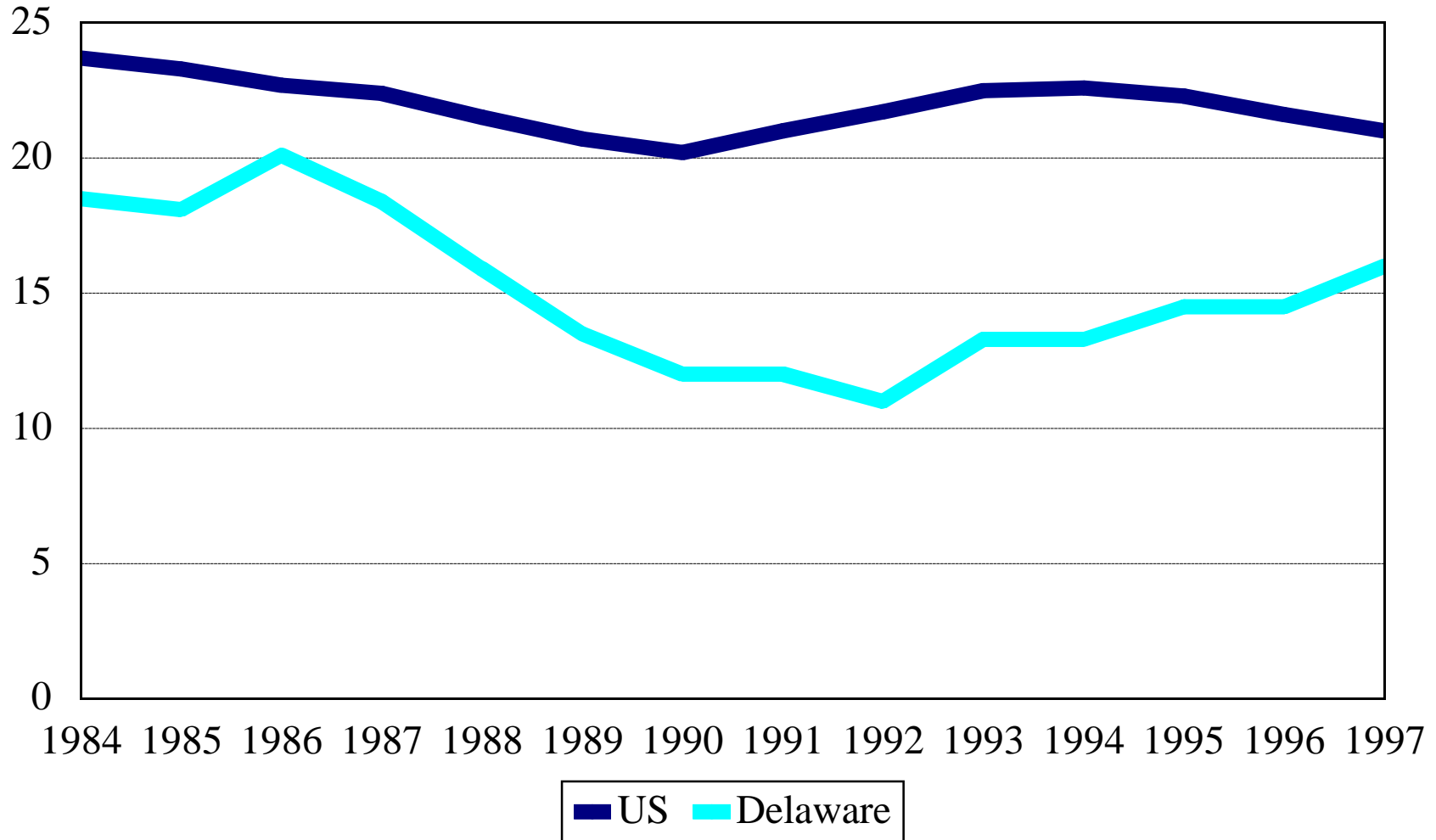
Source: Center for Applied Demography and Survey Research, University of Delaware

# Poverty Rates by Family Structure for Delaware in 1990



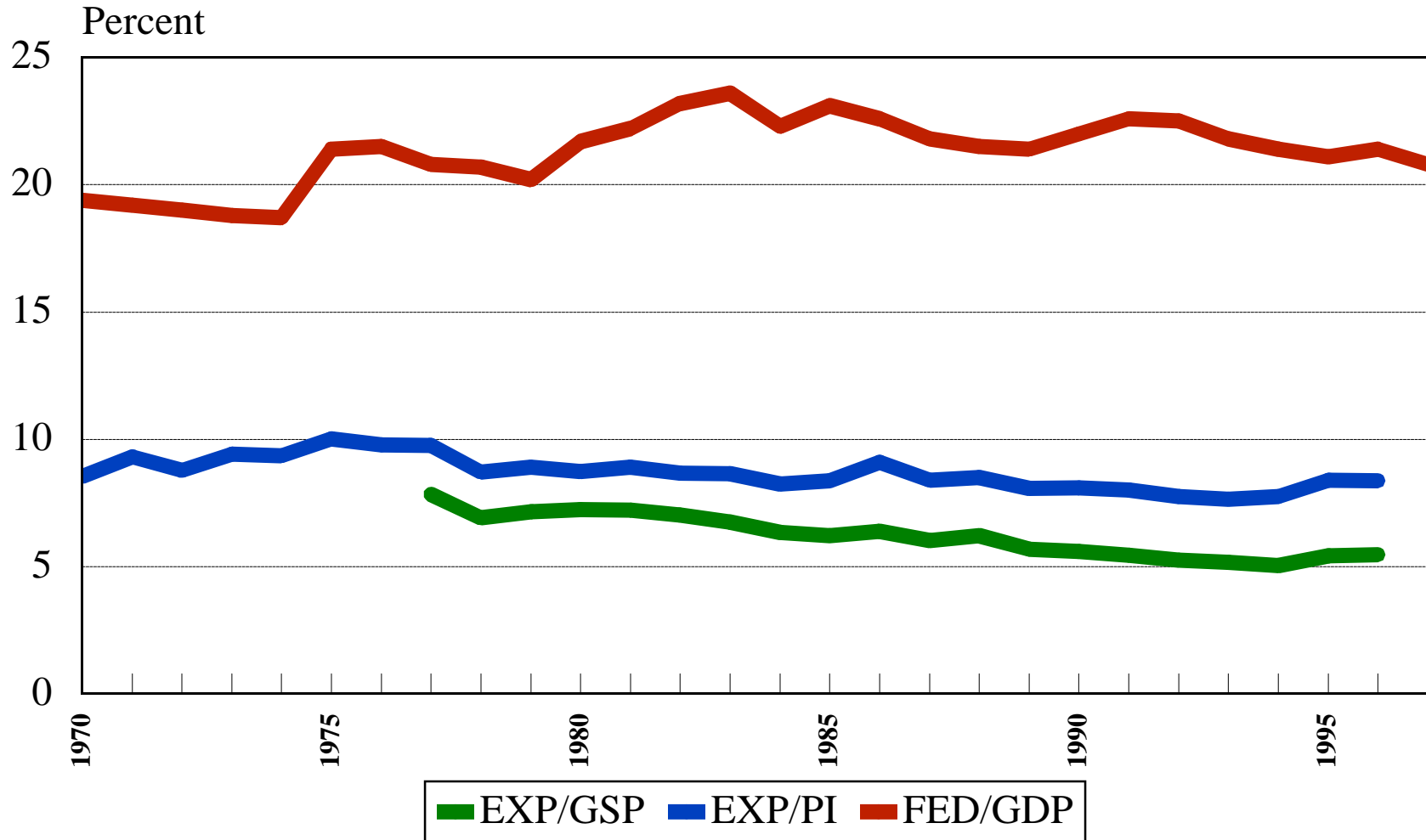
Source: Center for Applied Demography and Survey Research, University of Delaware

## Percent of Children Aged 0-17 in Poverty for Delaware and the United States



Source: Center for Applied Demography and Survey Research, University of Delaware

# State/Federal Government Expenditures Percent of Gross Product and Personal Income 1970-1997



Source: Center for Applied Demography and Survey Research, University of Delaware