

# **Delawareans' Attitudes toward Economic Growth: Survey Results**

**Choices for Delaware  
Life and the Economy in 2000 and Beyond**

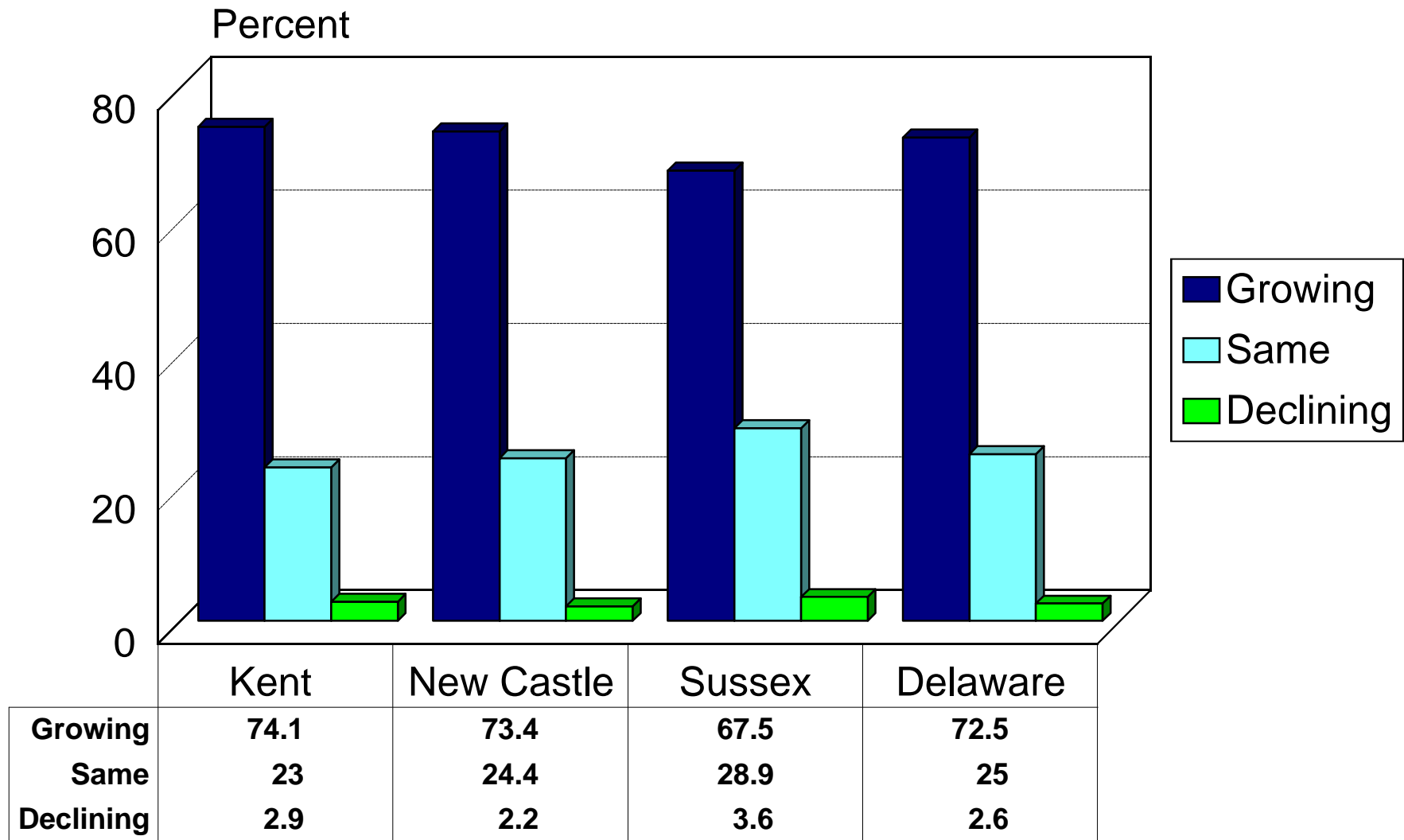
**Presented by  
Edward C. Ratledge**

**Center for Applied Demography and Survey Research, University of Delaware**

# Survey Footnotes

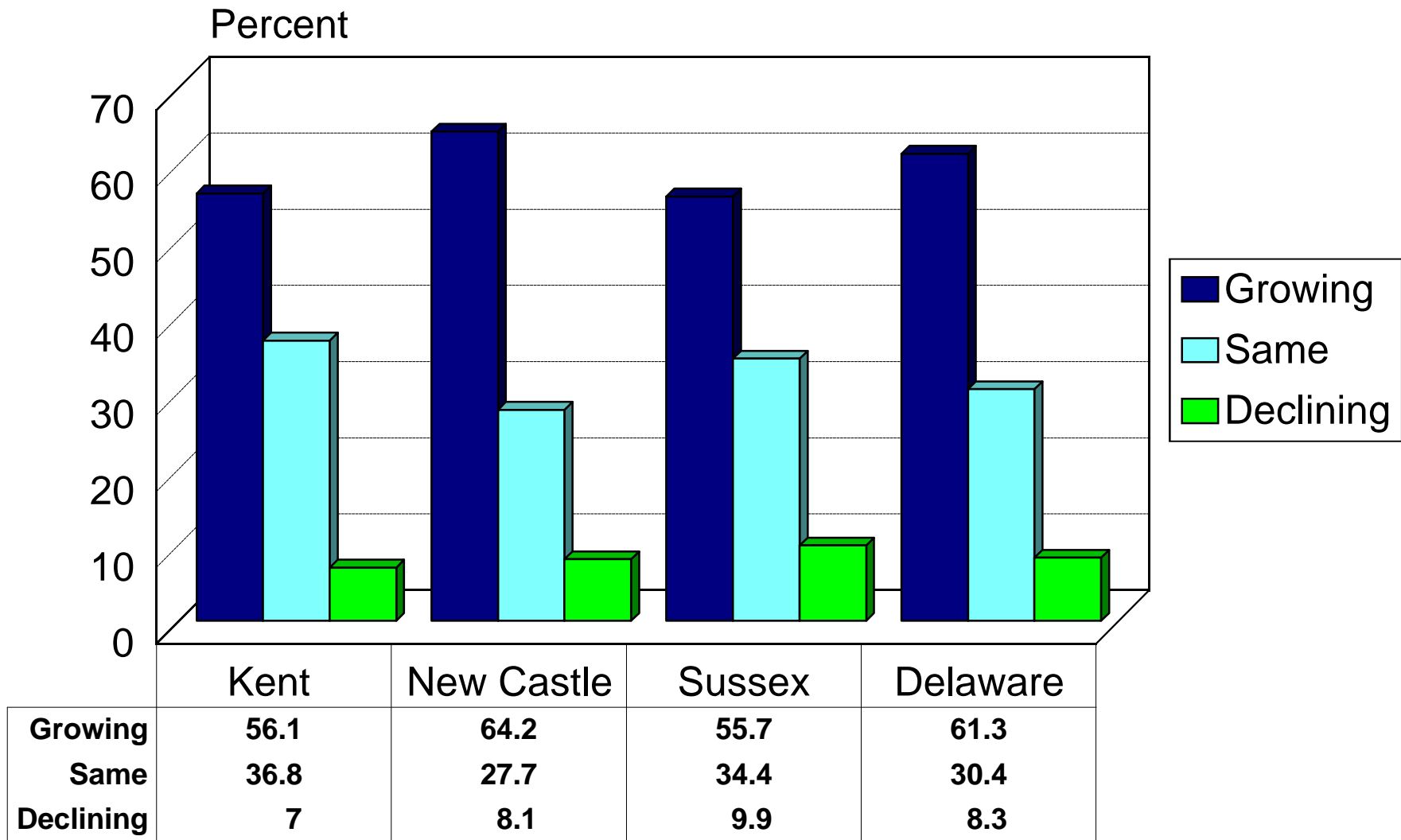
- ✓ Survey conducted October 1998
- ✓ Data gathered by telephone using professional interviewers
- ✓ Random-digit dialing and within household randomization
- ✓ 1105 interviews with at least 350 from each county
- ✓ Accuracy at least +/- 5%

# How is Delaware's Economy Changing? by County



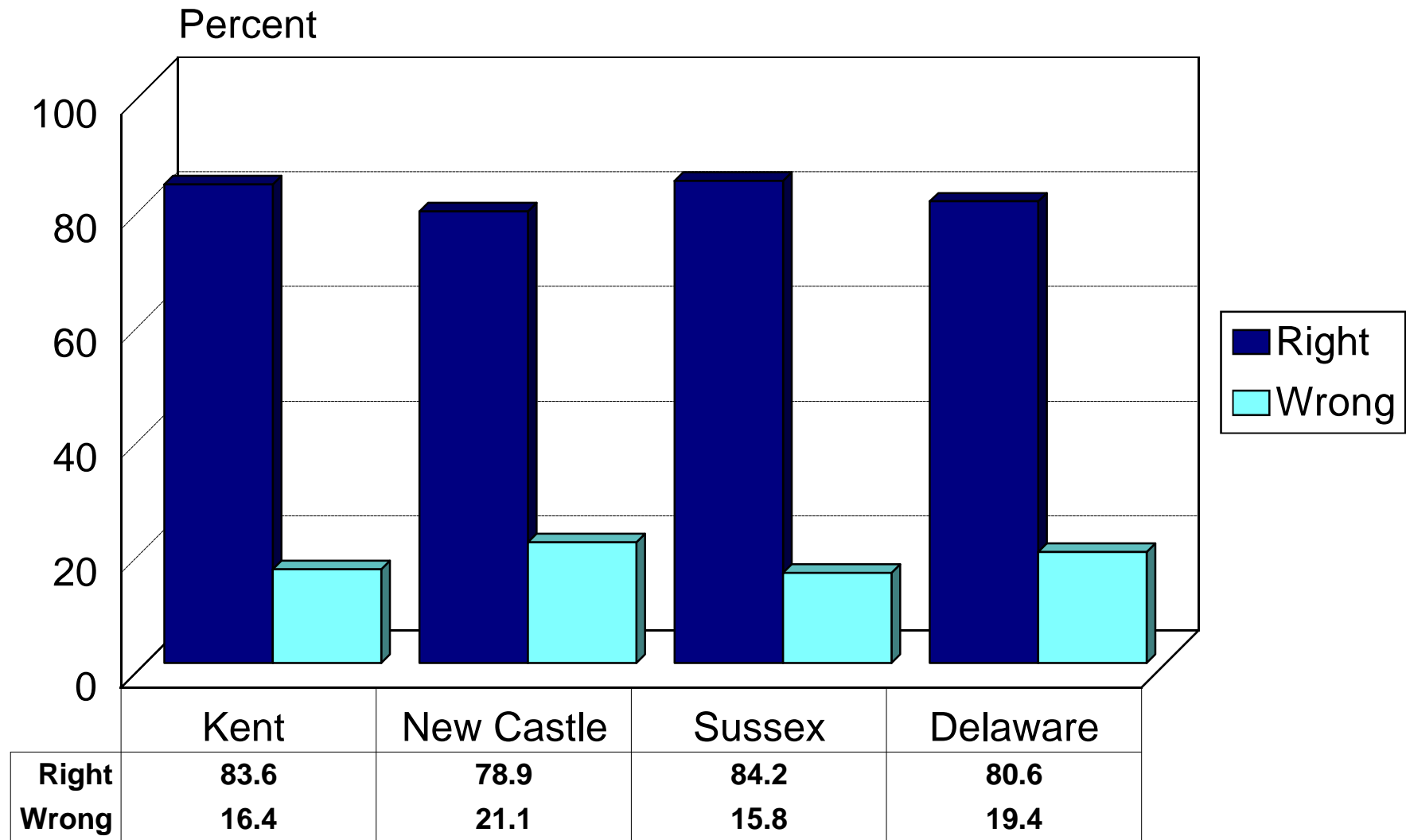
Source: Center for Applied Demography & Survey Research, University of Delaware

# How are Job Opportunities Changing? by County



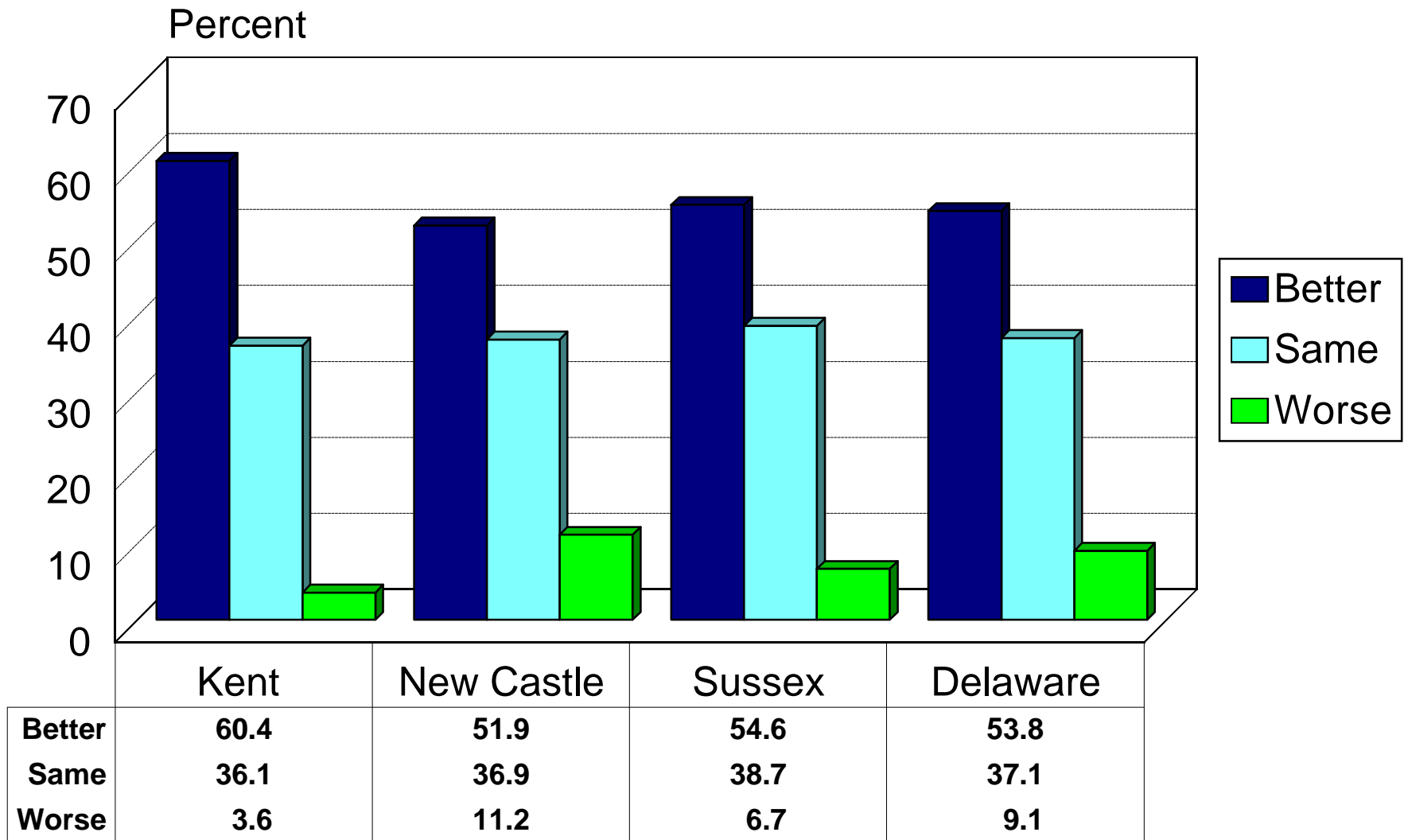
Source: Center for Applied Demography & Survey Research, University of Delaware

# Do you Feel Delaware is on the Right or Wrong Track? by County



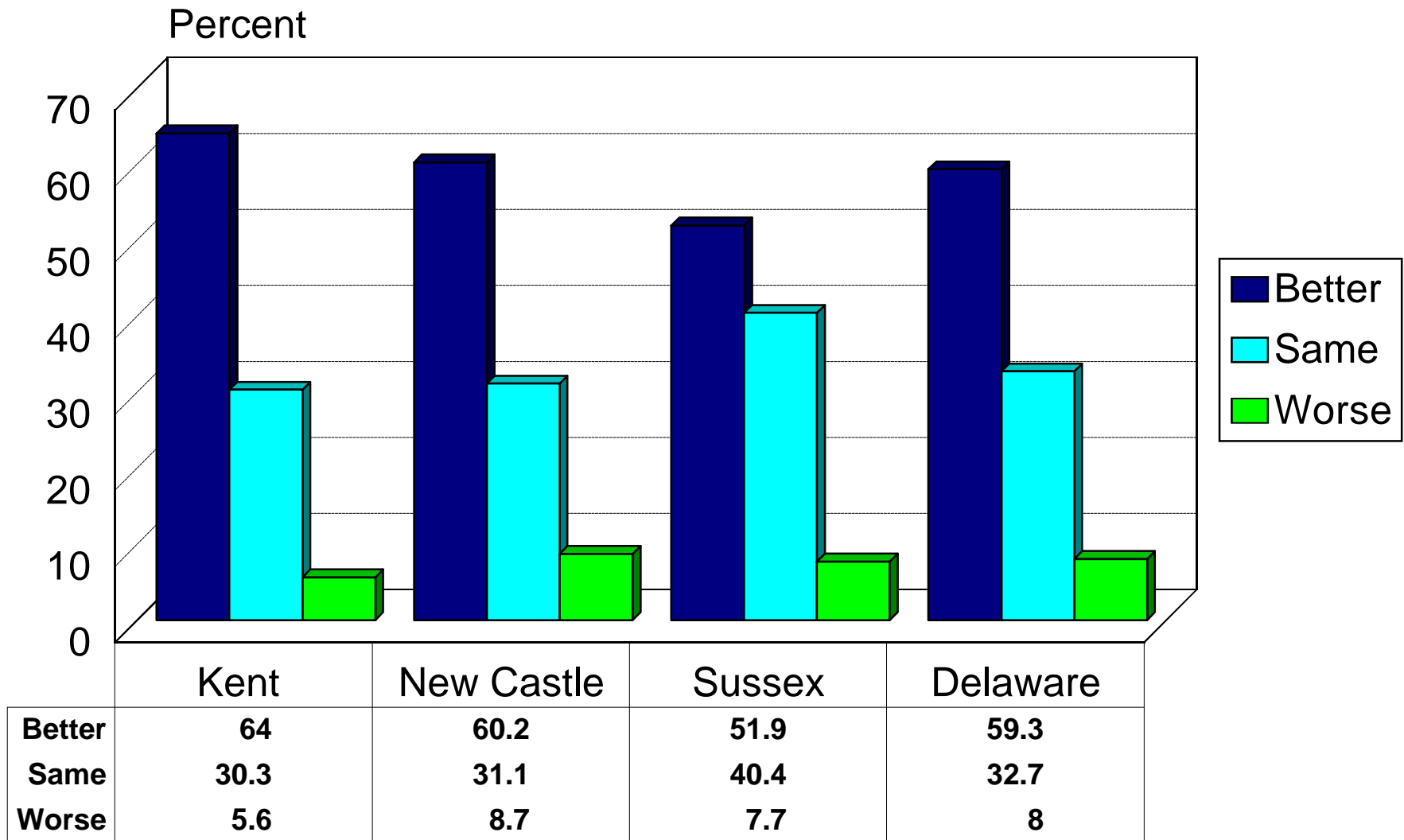
Source: Center for Applied Demography & Survey Research, University of Delaware

# Is Delaware Better Off than Five Years Ago? by County



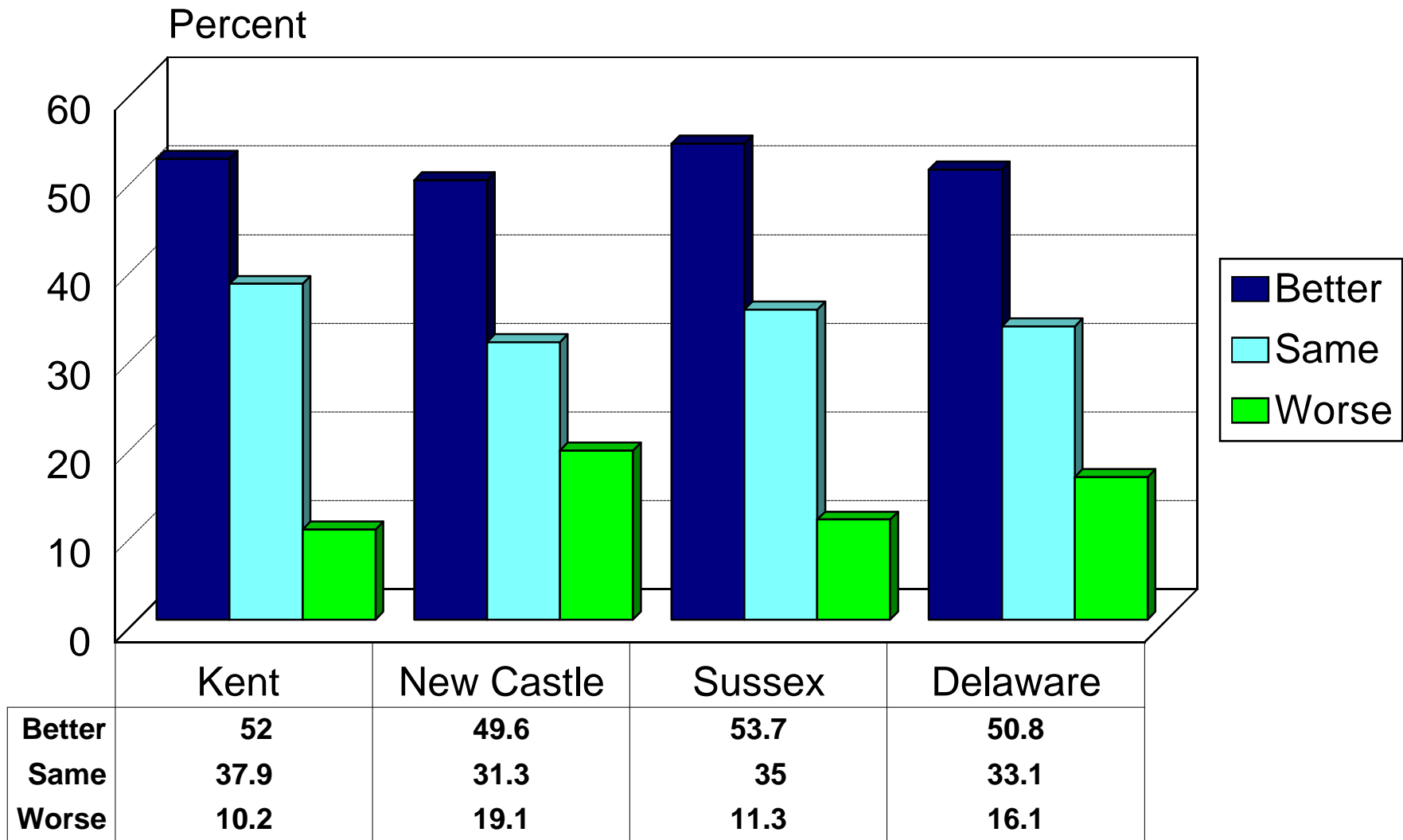
Source: Center for Applied Demography & Survey Research, University of Delaware

# Are You Better Off than Five Years Ago? by County



Source: Center for Applied Demography & Survey Research, University of Delaware

# Quality of Life in Delaware Five Years From Now by County

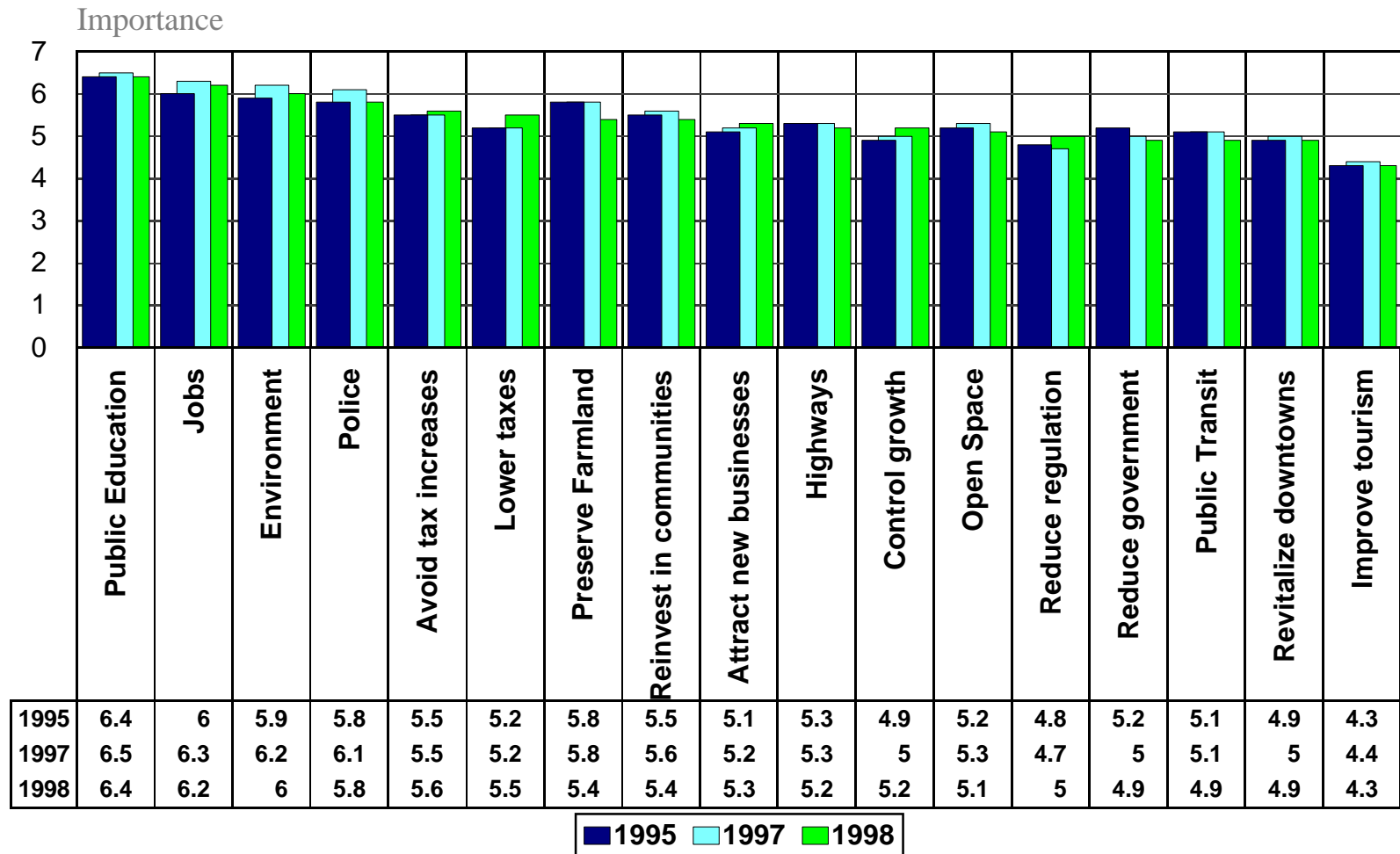


Source: Center for Applied Demography & Survey Research, University of Delaware

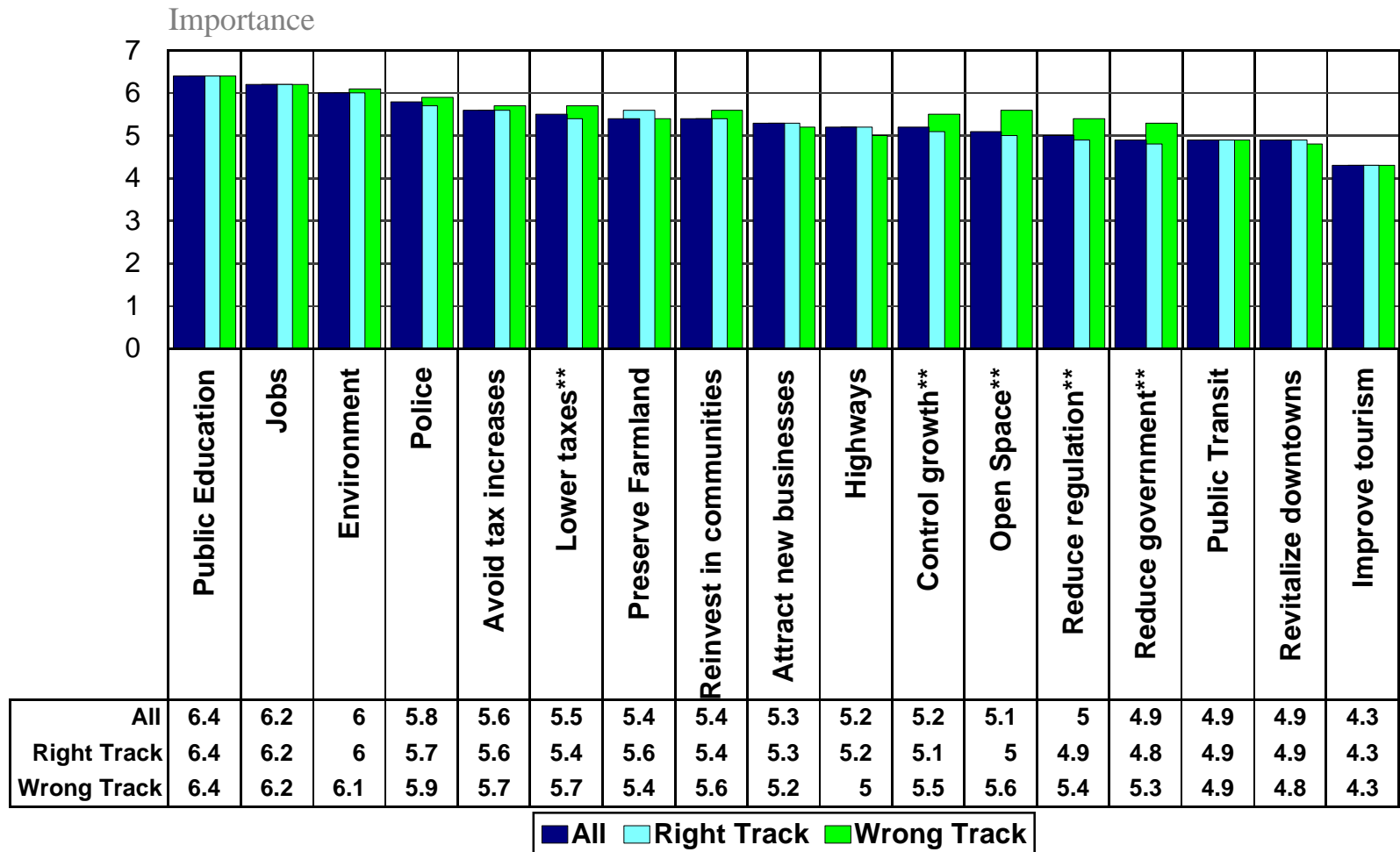


# State Priorities

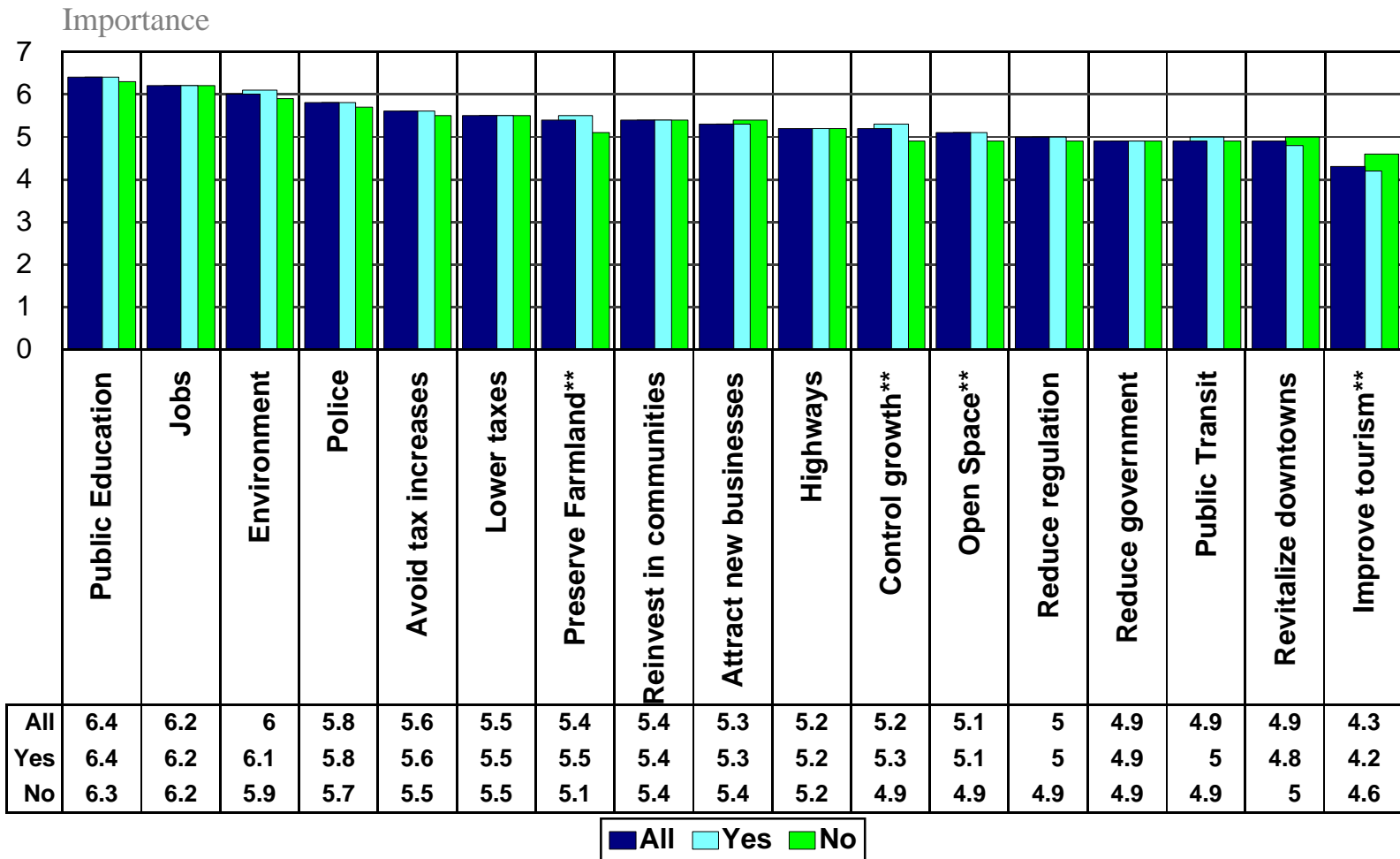
## Delaware 1995-1998



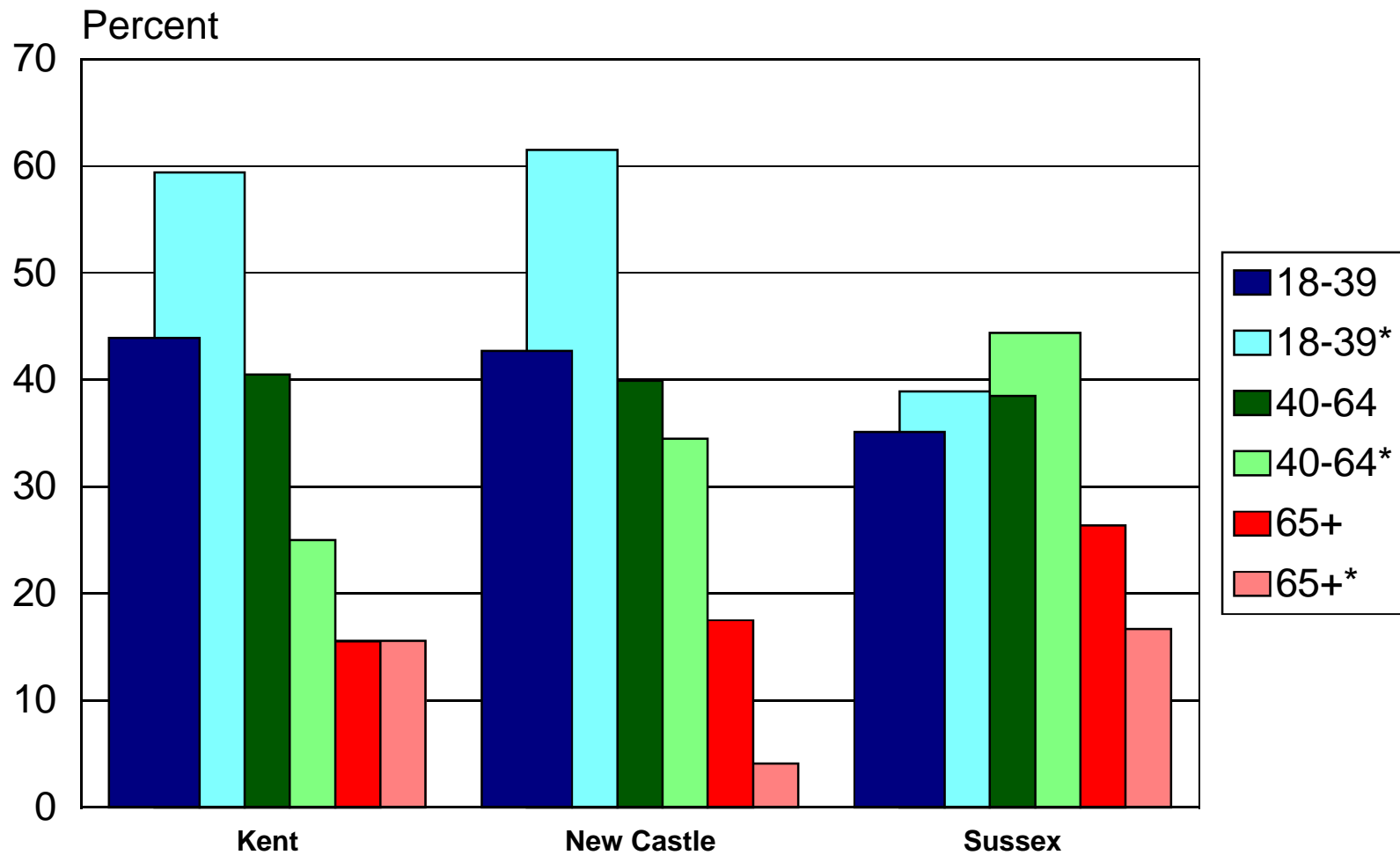
# State Priorities by Delaware's Direction in 1998



# State Priorities by Resident in 1990

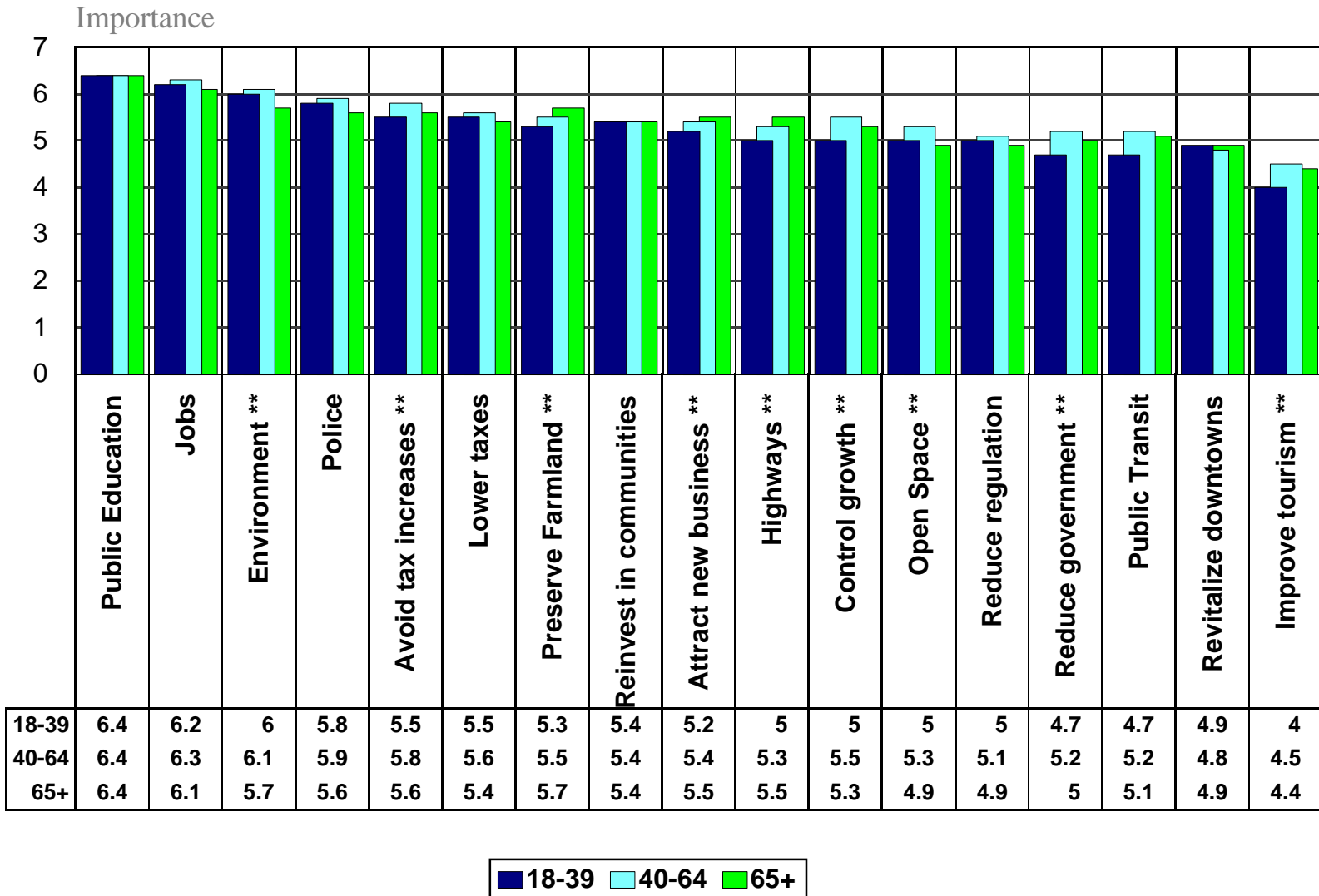


# Impact of New Migrants by County and Age



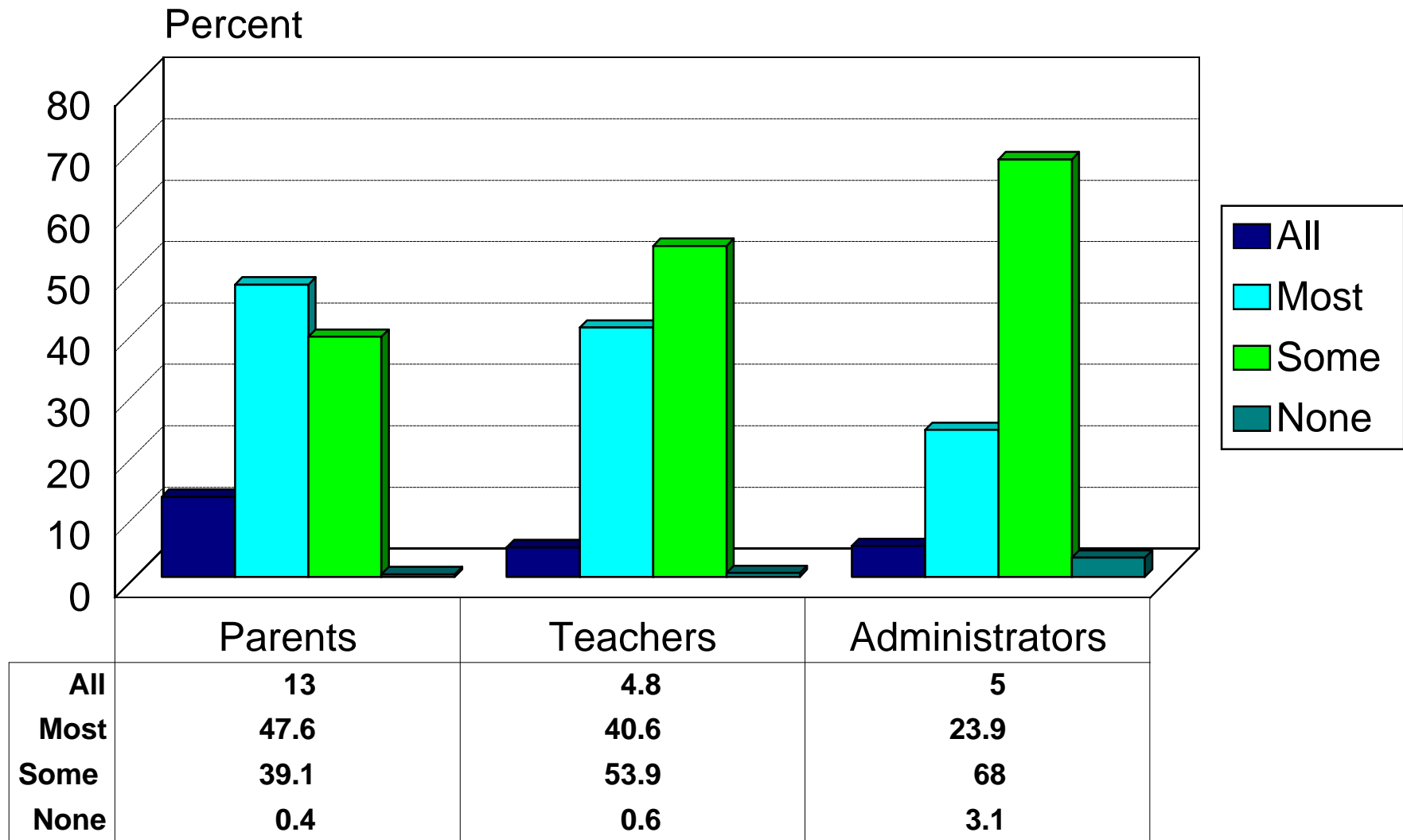
Source: Center for Applied Demography and Survey Research, University of Delaware

# State Priorities by Age Group



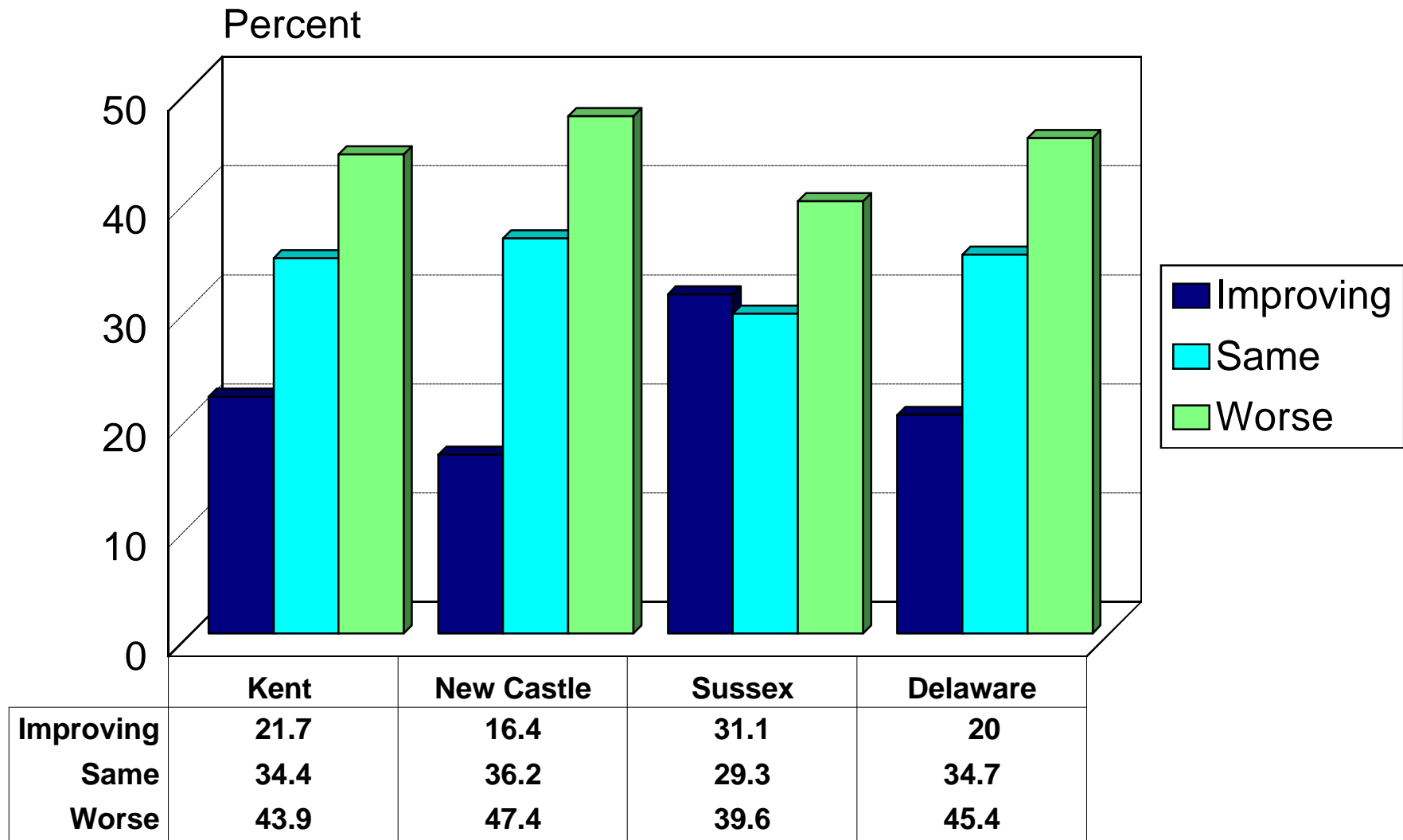
Source: Center for Applied Demography and Survey Research, University of Delaware

# Responsibility for Academic Performance in Delaware? by Position



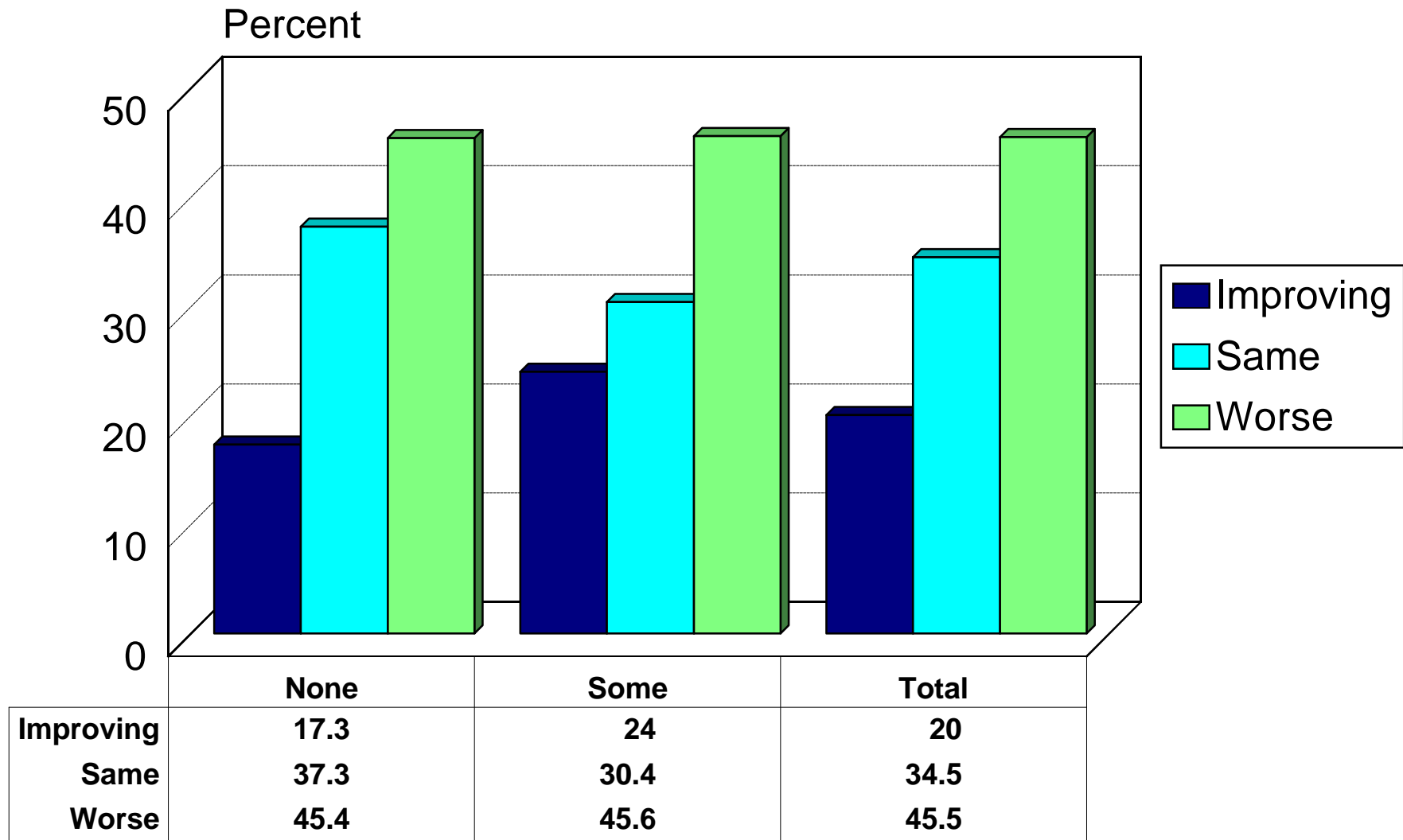
Source: Center for Applied Demography & Survey Research, University of Delaware

# Compared to Five Years Ago How are the Schools Doing? by County



Source: Center for Applied Demography & Survey Research, University of Delaware

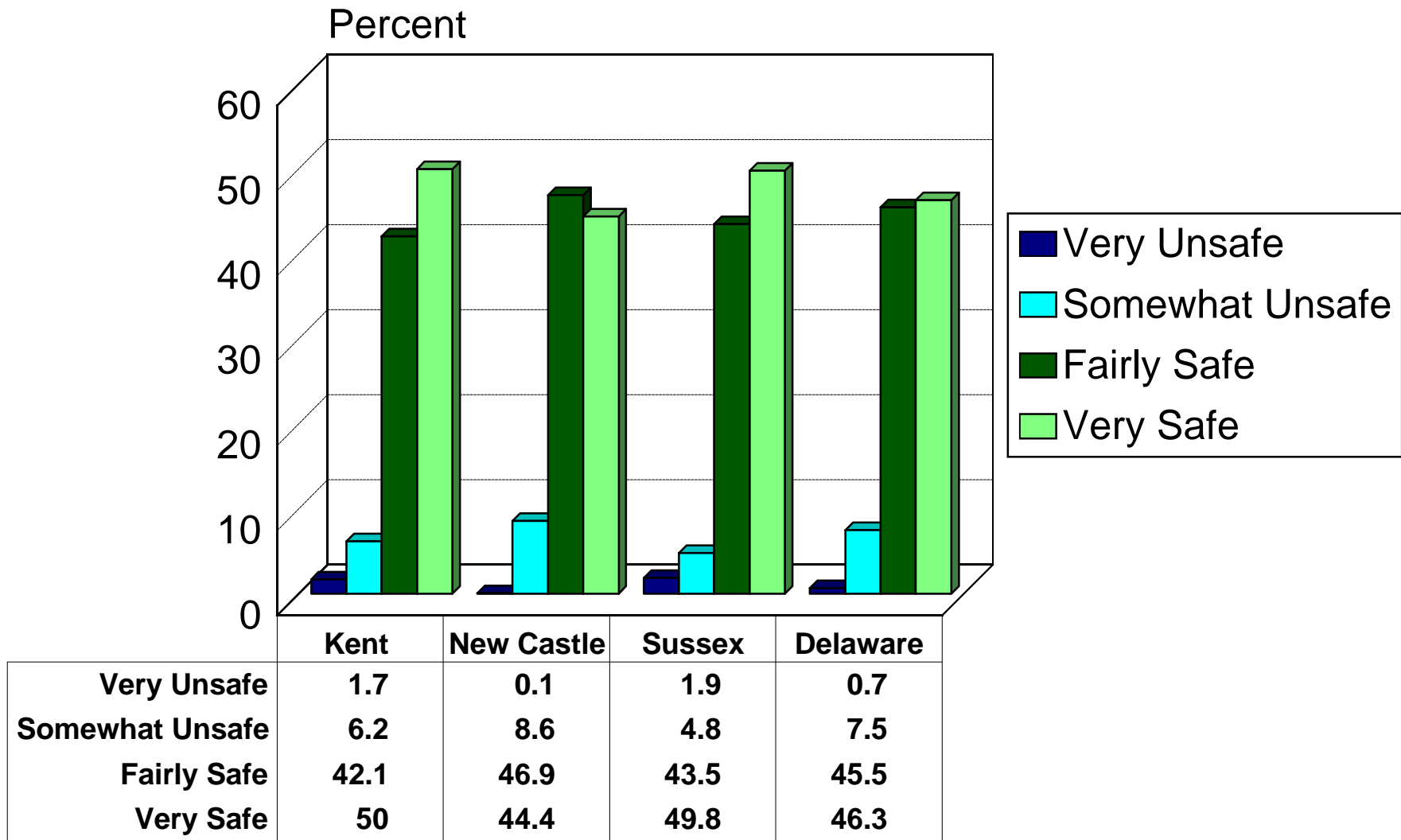
# Compared to Five Years Ago How are the Schools Doing? by Number of Persons in Household Under 18



Source: Center for Applied Demography & Survey Research, University of Delaware

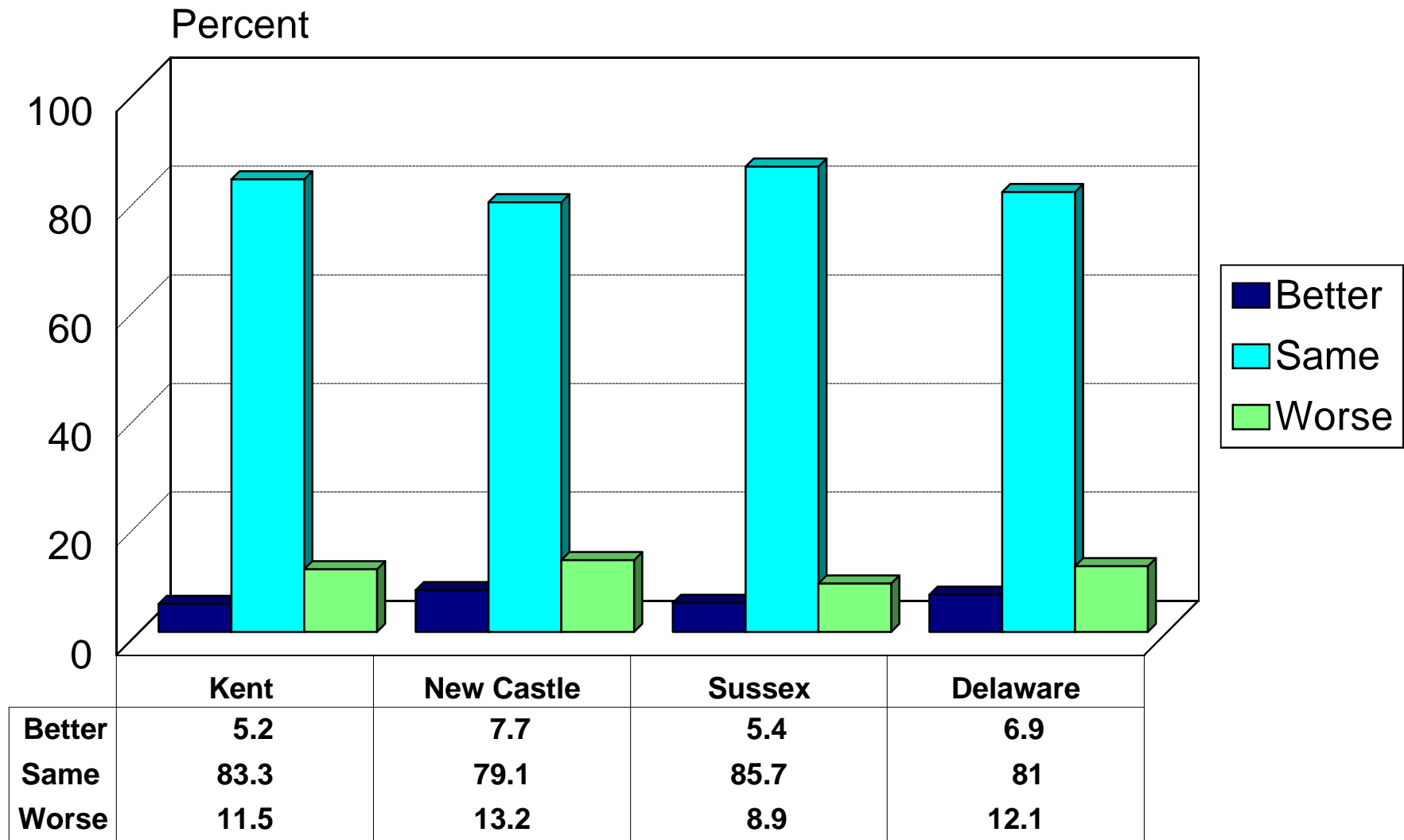


# How Safe is Your Neighborhood? by County



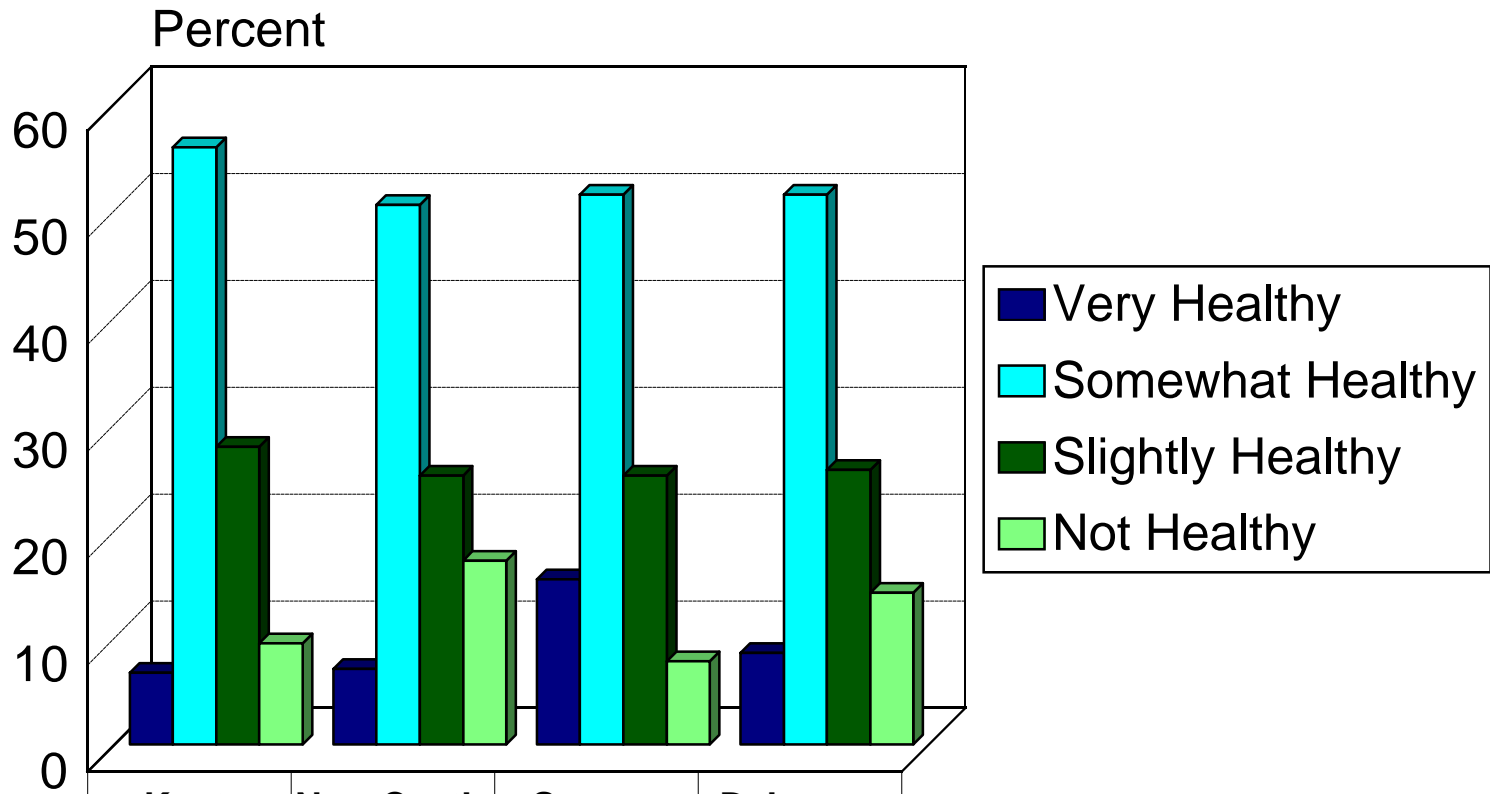
Source: Center for Applied Demography & Survey Research, University of Delaware

# How Safe is Your Neighborhood Compared to 1 Year Ago? by County



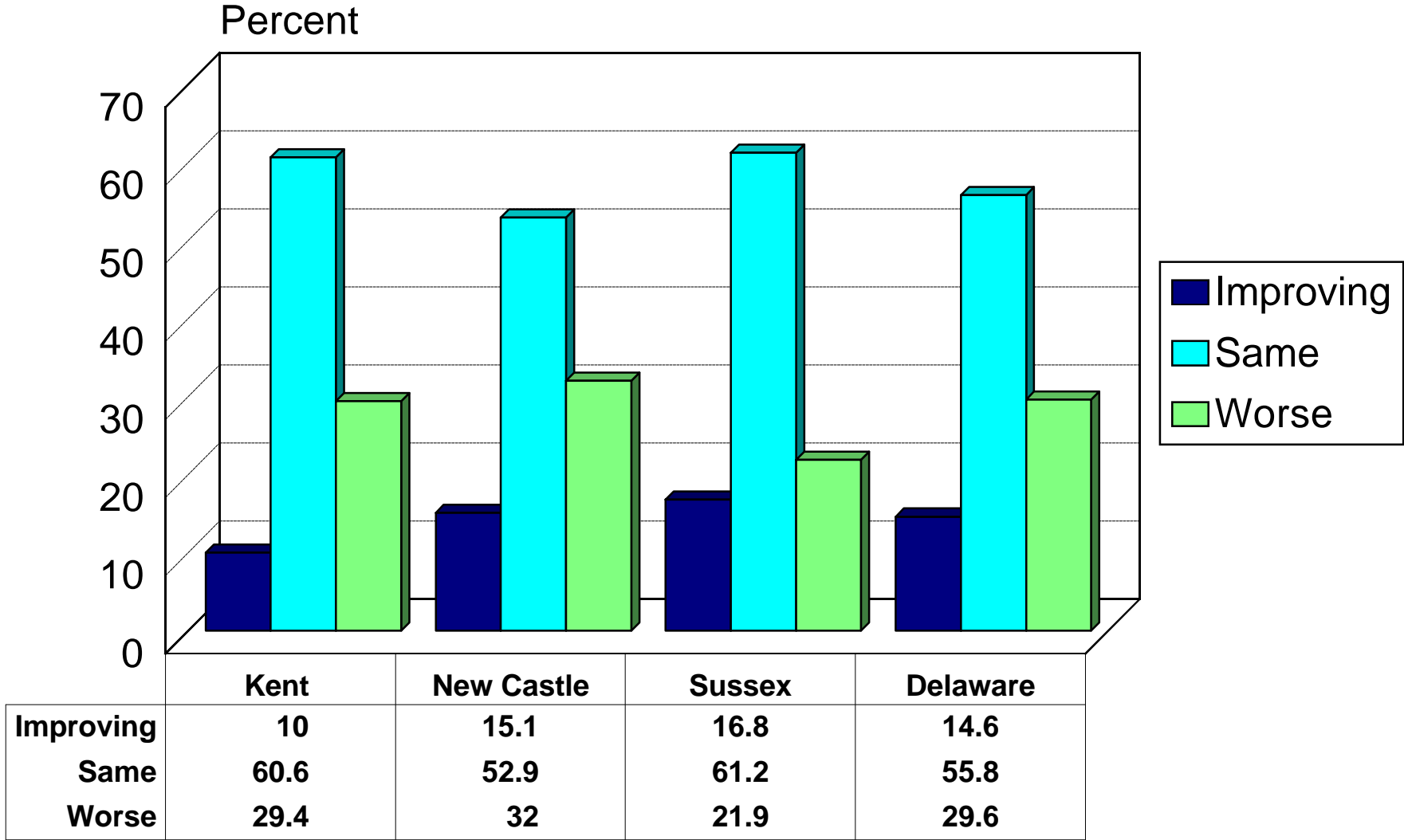
Source: Center for Applied Demography & Survey Research, University of Delaware

# How Healthy is Delaware's Environment? by County



	Kent	New Castle	Sussex	Delaware
<b>Very Healthy</b>	<b>6.7</b>	<b>7.1</b>	<b>15.5</b>	<b>8.6</b>
<b>Somewhat Healthy</b>	<b>55.9</b>	<b>50.5</b>	<b>51.5</b>	<b>51.5</b>
<b>Slightly Healthy</b>	<b>27.9</b>	<b>25.2</b>	<b>25.2</b>	<b>25.7</b>
<b>Not Healthy</b>	<b>9.5</b>	<b>17.2</b>	<b>7.8</b>	<b>14.2</b>

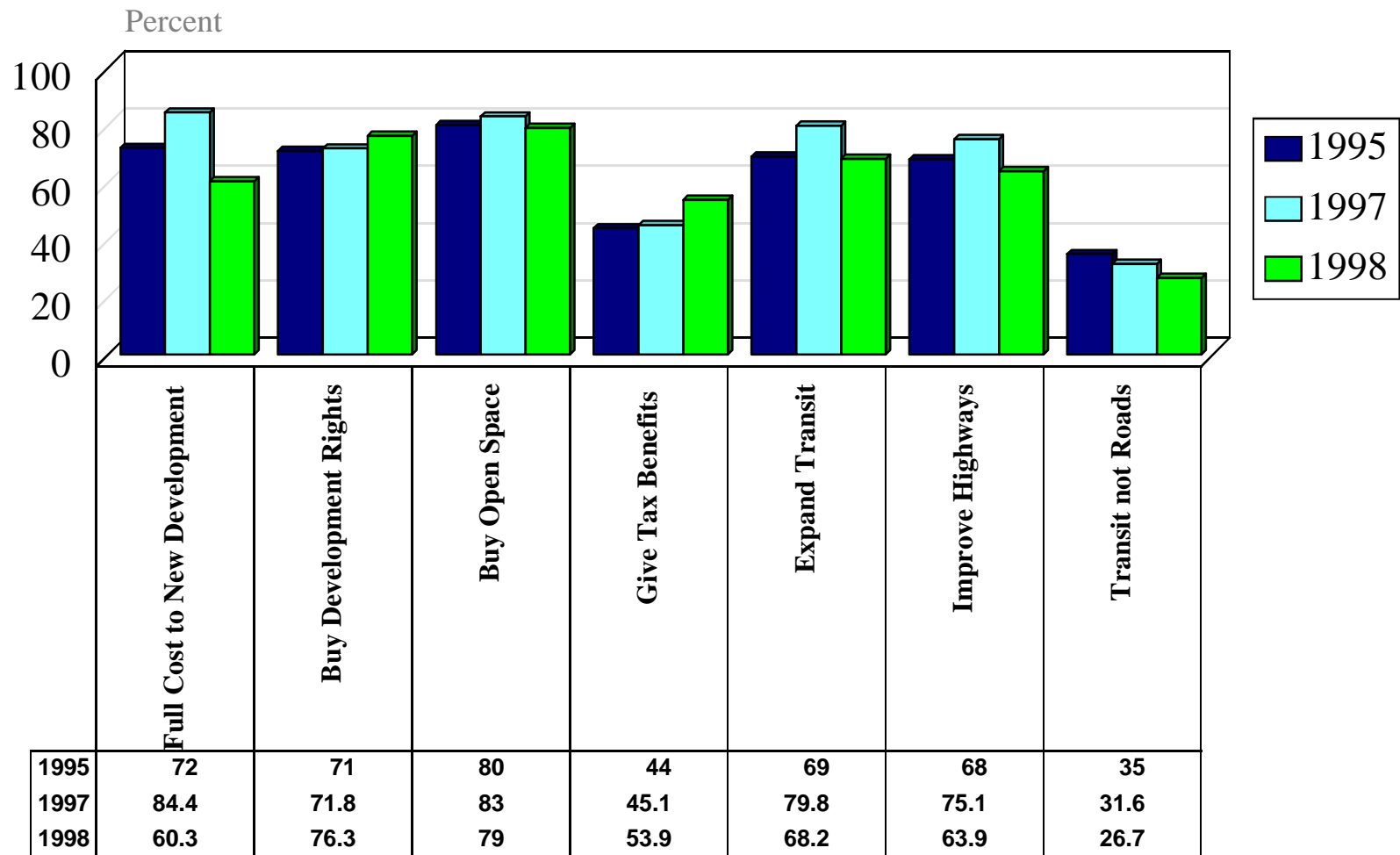
# How is the Environment Compared to Five Years Ago? by County



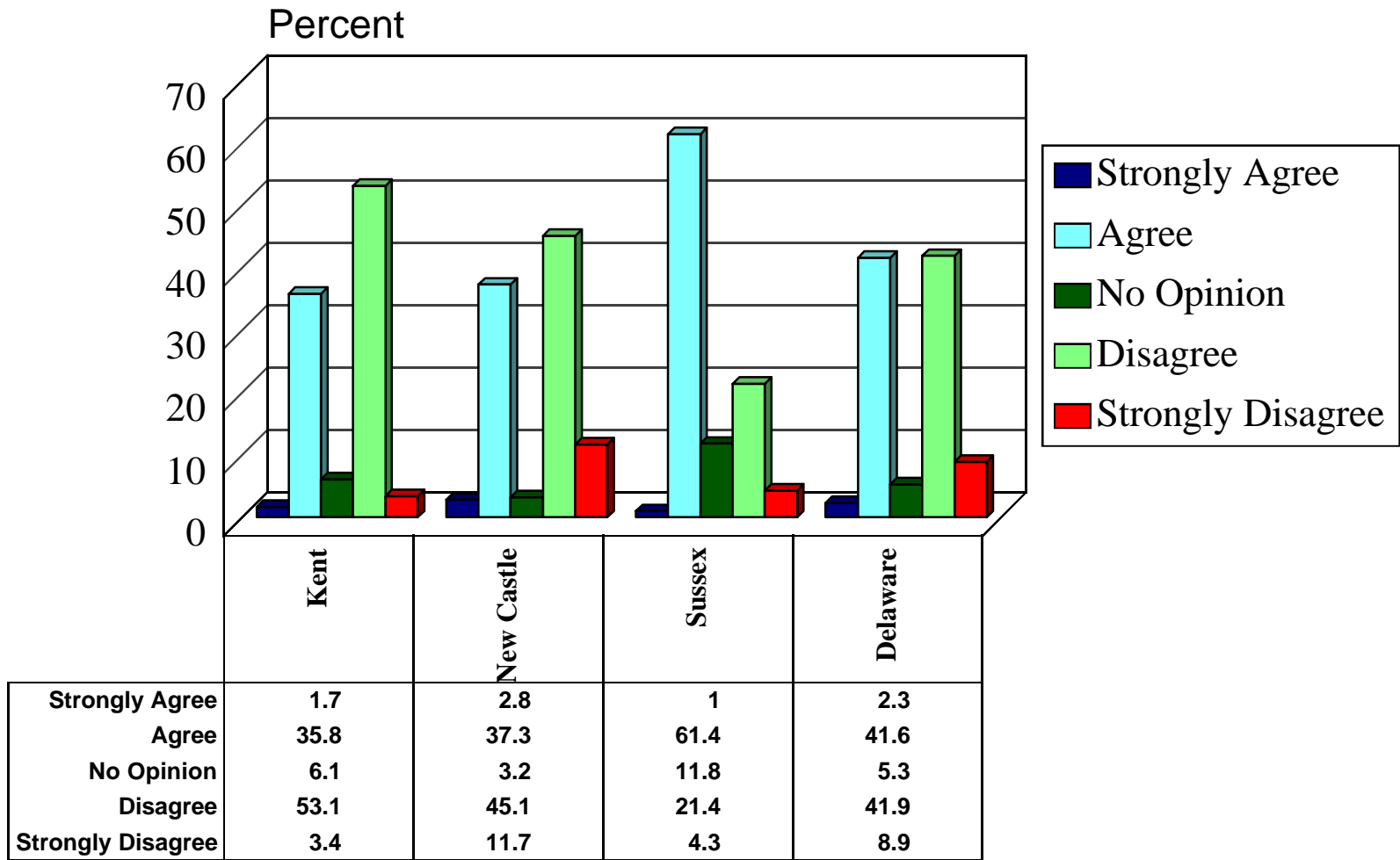
Source: Center for Applied Demography & Survey Research, University of Delaware

# What Action should be taken?

## Percent Agreeing: 1995-1998

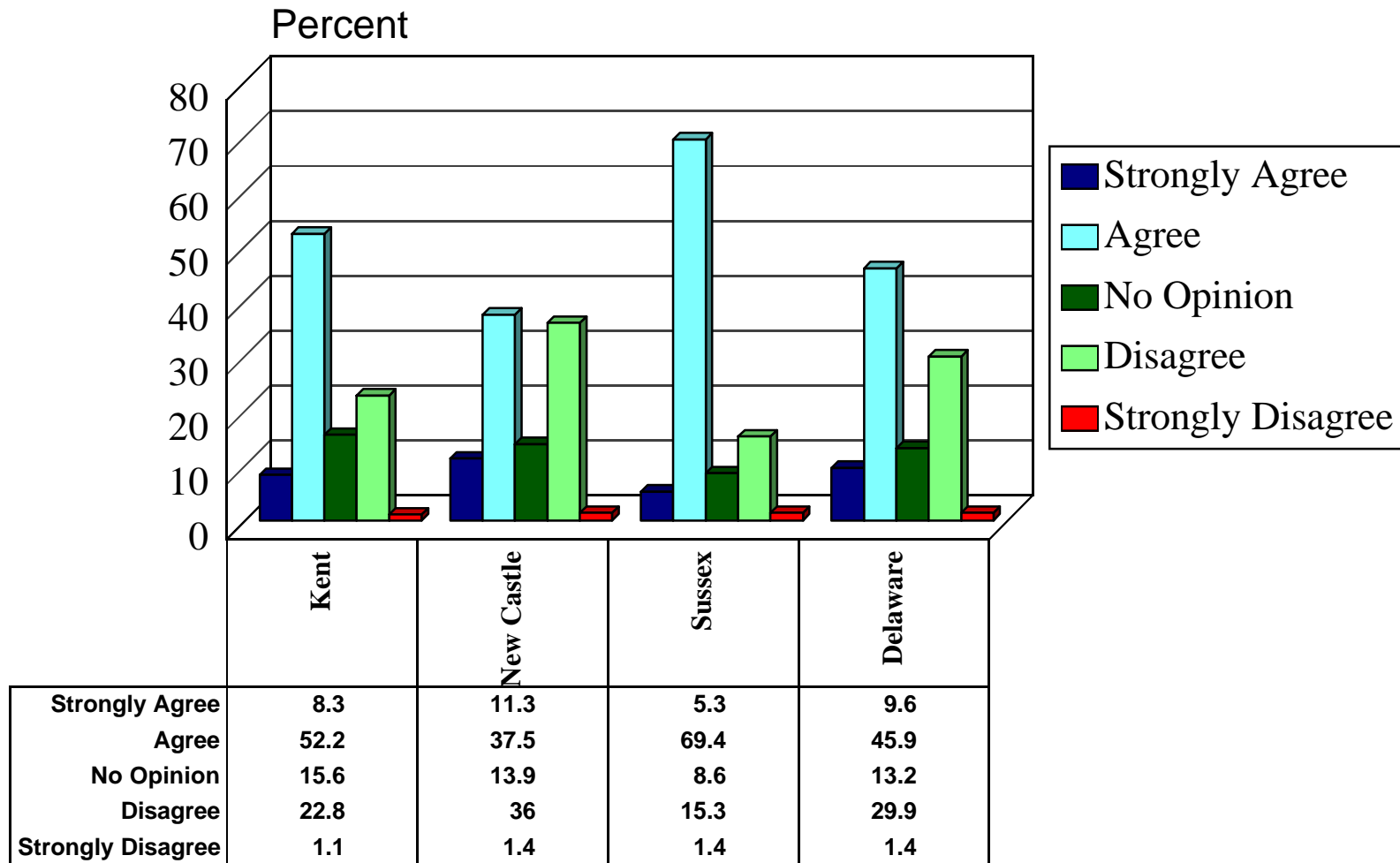


# OK to Expand into Coastal Zone if No Pollution? by County



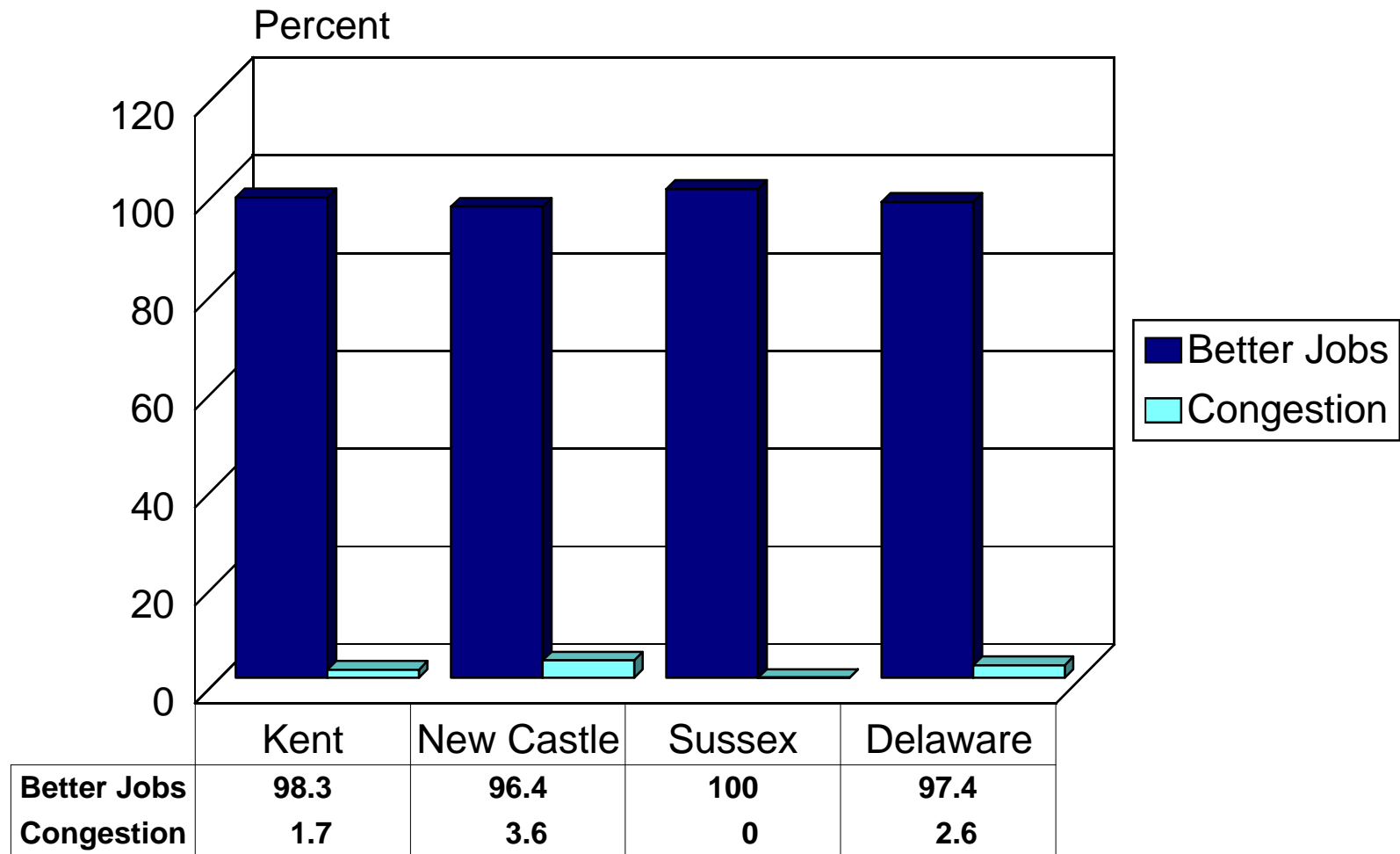
Source: Center for Applied Demography and Survey Research, University of Delaware

# Too Much Government Regulation of Business by County



# Policy Options

## Choose Higher Quality Jobs or More Congestion

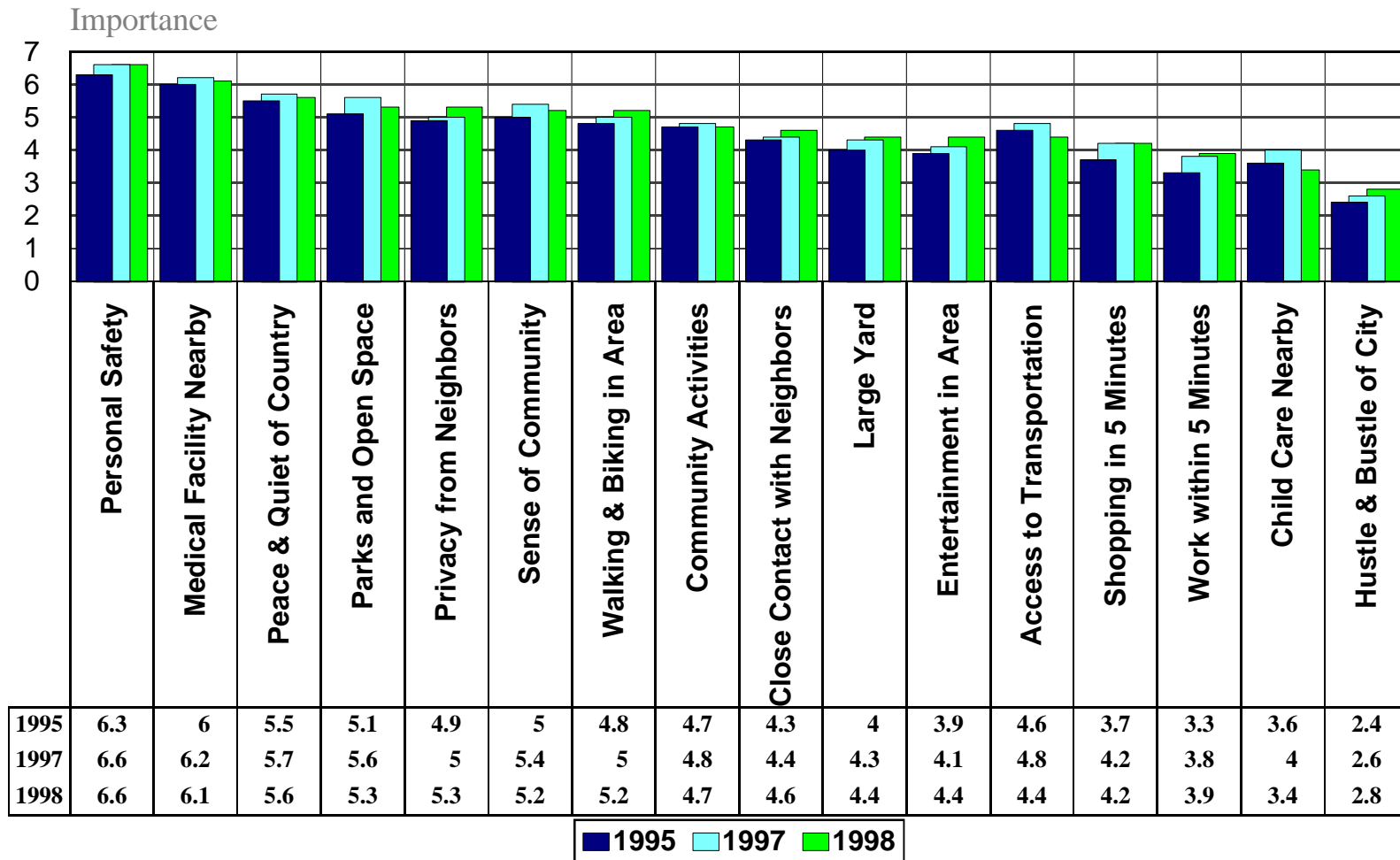


Source: Center for Applied Demography and Survey Research, University of Delaware



# Importance of Selected Quality of Life Factors

## 1995-1998



# Where would you most like to live? 1995-1998

