

How to set up a MatLab connection via the internet on your own computer

The following instructions work for a Windows Vista machine.

1. Install SSH Secure Shell

SSH Secure Shell is an application that connects your computer to “the composers.”

Download the software from udeploy at <https://udeploy.udel.edu/Win/Docs/ssh.html>
and install per the instructions at <http://www.udel.edu/topics/connect/sw/ssh/sshwin/ssinstall.html>

2. Install Cygwin

Cygwin is an application that displays graphical user interface (GUI) elements from “the composers” in a Windows environment. Download the software directly from Cygwin at <http://cygwin.com/setup.exe>

And install as per **ONLY** steps 1 – 11 at

<http://www.udel.edu/topics/connect/sw/exceed/docs-9/cygwin.html>

3. Restart computer

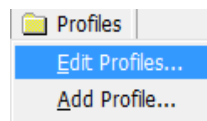
4. Run Cygwin

Follow **ONLY** steps 1 and 2 in the “To use Cygwin/X:” section's at
<http://www.udel.edu/topics/connect/sw/exceed/docs-9/cygwin.html>

5. Run SSH (The Windows installation, not the Cygwin installation)

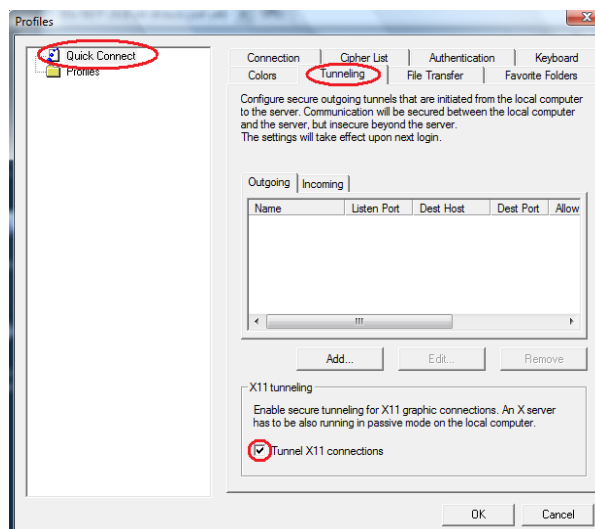
But do **NOT** start any connection yet

6. Enable Tunneling in SSH



Click on Profiles > Edit Profile

Select Quick Connect on the left hand pane, and Tunneling tab on the right hand pane
Make sure Tunnel X11 connections is checked



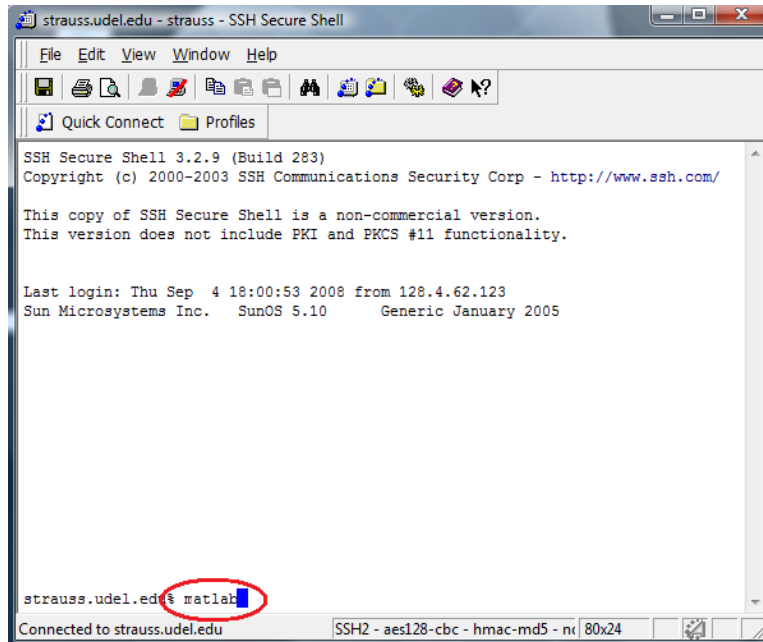
Click OK.

7. Connect to strauss and use MatLab

Follow the steps in “How to start a Secure Shell program” section at <http://www.udel.edu/topics/connect/sw/ssh/sshwin/ssstart.html>

WITH ONE EXCEPTION:

Connect to strauss.udel.edu, not copland as indicated in the webpage.



After you've logged in, type matlab at the command prompt, and hit the enter key

Voila! After some loading, MatLab appears on your own computer.

8. Log off properly

Follow the steps in “Ending your Secure Shell session” section at <http://www.udel.edu/topics/connect/sw/ssh/sshwin/ssstart.html> to properly log off from strauss.